

FIG. 1

LOGICAL ADDRESS RANGE	PHYSICAL ADDRESS RANGE
R0	MLC/Block 0
R1	MLC/Block 1
R2	MLC/Block 2
R3	MLC/Block 3
R4	MLC/Block 4
RN	MLC/Block N

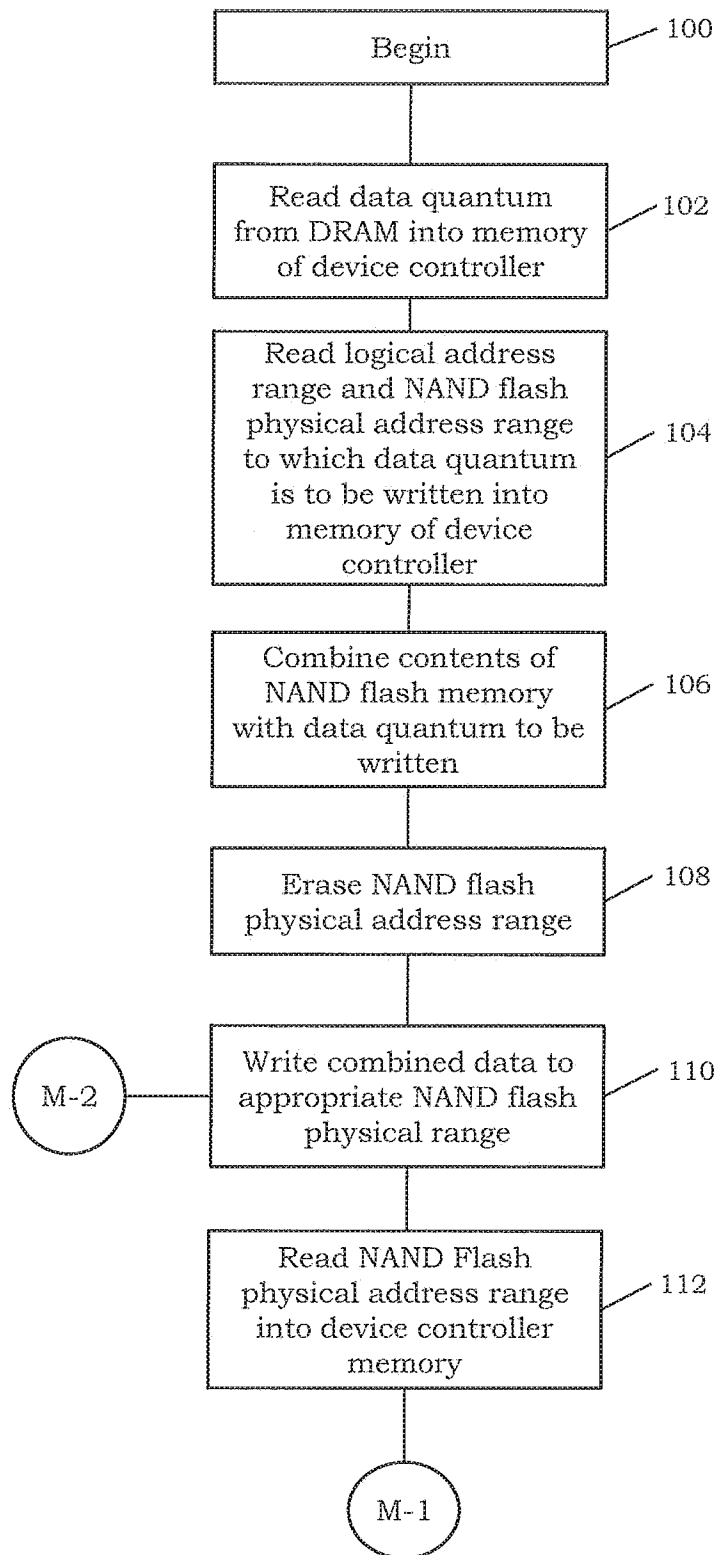
Failed Data Integrity Test →

FIG. 2A

LOGICAL ADDRESS RANGE	PHYSICAL ADDRESS RANGE
R0	MLC/Block 0
R1	MLC/Block 1
R2	SLC/Block 0
R3	MLC/Block 3
R4	MLC/Block 4
RN	MLC/Block N

Remapping to SLC flash module →

FIG. 2B

FIG. 3A

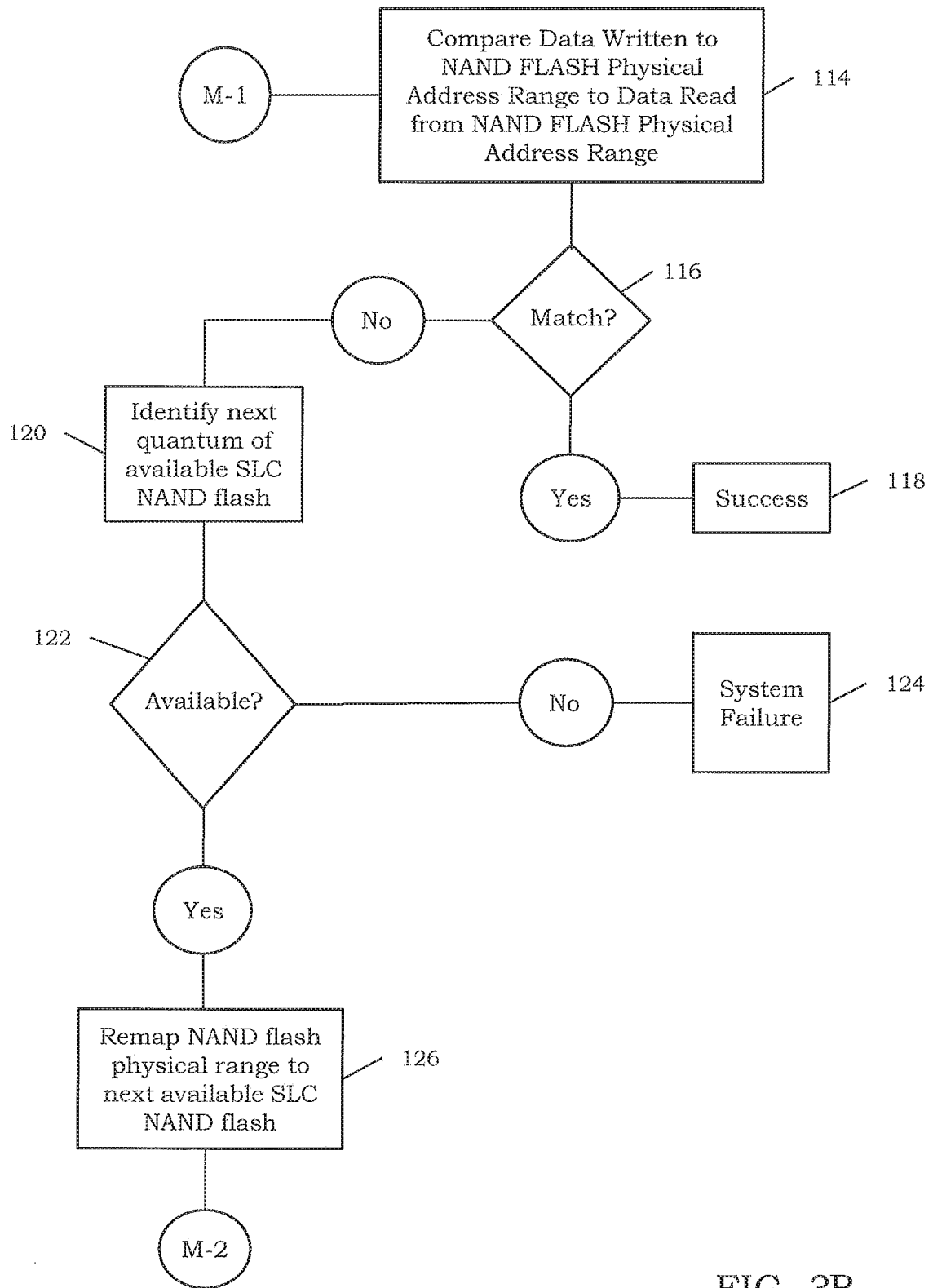


FIG. 3B

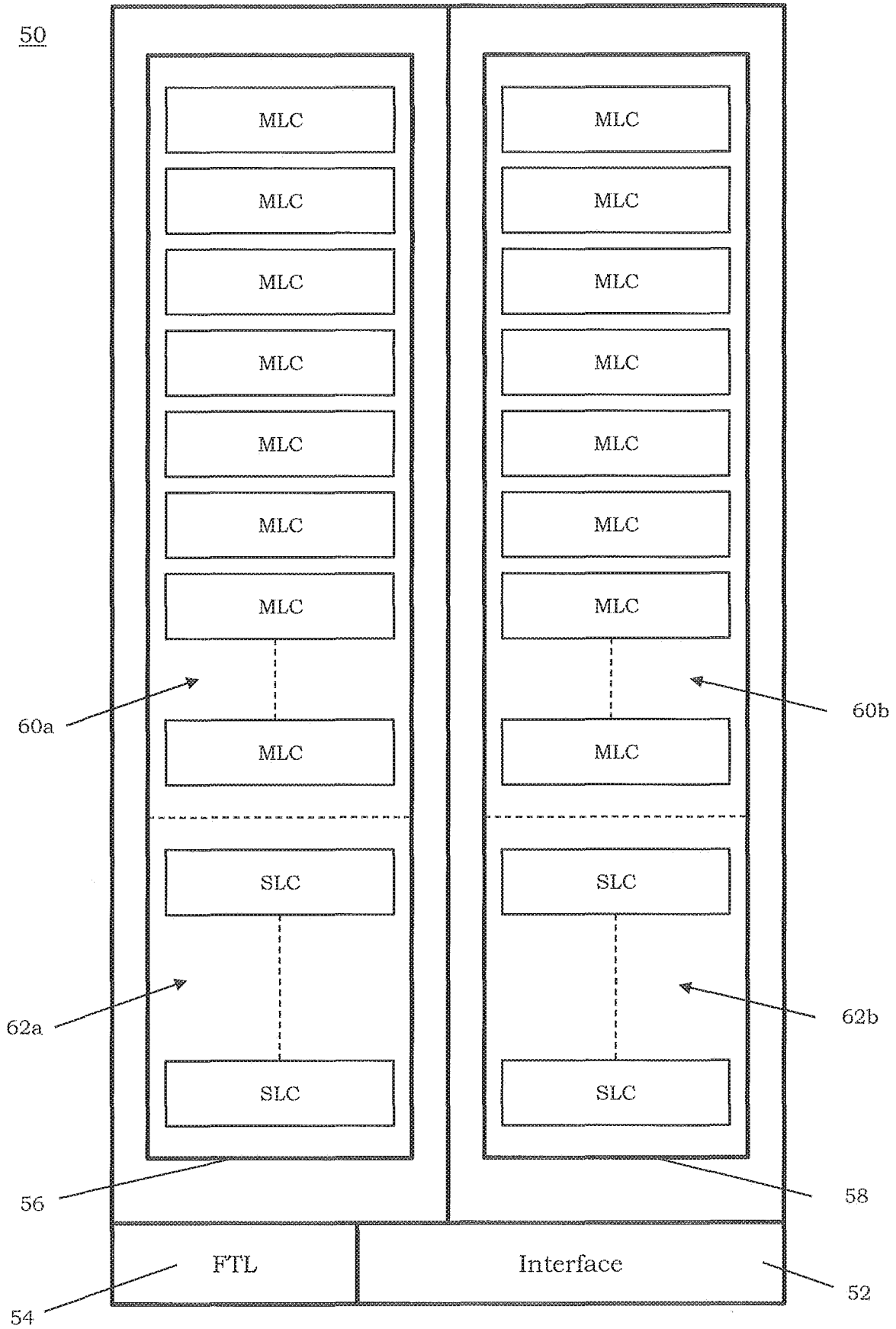


FIG. 4