

EXHIBIT 3

(12) **United States Patent**
Nakano et al.

(10) **Patent No.:** **US 8,339,493 B2**
(45) **Date of Patent:** ***Dec. 25, 2012**

(54) **ELECTRIC CAMERA**

(75) Inventors: **Takahiro Nakano**, Hitachinaka (JP);
Ryuji Nishimura, Yokohama (JP);
Toshiro Kinugasa, Hiratsuka (JP)

(73) Assignee: **Hitachi, Ltd.**, Tokyo (JP)

(*) Notice: Subject to any disclaimer, the term of this patent is extended or adjusted under 35 U.S.C. 154(b) by 136 days.

This patent is subject to a terminal disclaimer.

(21) Appl. No.: **12/845,266**

(22) Filed: **Jul. 28, 2010**

(65) **Prior Publication Data**

US 2010/0289907 A1 Nov. 18, 2010

Related U.S. Application Data

(60) Continuation of application No. 10/660,710, filed on Sep. 12, 2003, now Pat. No. 8,059,177, which is a division of application No. 09/520,836, filed on Mar. 8, 2000, now Pat. No. 6,765,616.

(30) **Foreign Application Priority Data**

Jan. 11, 2000 (JP) 2000-006064

(51) **Int. Cl.**

H04N 5/335 (2011.01)

(52) **U.S. Cl.** 348/294; 348/322; 348/312; 348/273

(58) **Field of Classification Search** None
See application file for complete search history.

(56) **References Cited**

U.S. PATENT DOCUMENTS

4,054,915 A 10/1977 Sugihara
5,170,249 A 12/1992 Ohtsubo et al.
5,187,569 A 2/1993 Tani

5,828,406 A 10/1998 Parulski et al.
5,847,758 A * 12/1998 Iizuka 348/317
6,195,125 B1 2/2001 Udagawa et al.
6,519,000 B1 * 2/2003 Udagawa 348/220.1
6,661,451 B1 12/2003 Kijima et al.
6,765,616 B1 * 7/2004 Nakano et al. 348/322
6,906,746 B2 * 6/2005 Hijishiri et al. 348/240.2
7,154,539 B1 12/2006 Nishimura et al.
7,403,226 B2 7/2008 Nakano et al.

FOREIGN PATENT DOCUMENTS

JP 04-323973 11/1992
JP 9-270959 10/1997
JP 11-004456 1/1999
JP 11-187306 7/1999
JP 11-355665 12/1999

* cited by examiner

Primary Examiner — Luong T Nguyen

(74) *Attorney, Agent, or Firm* — Antonelli, Terry, Stout & Kraus, LLP.

(57) **ABSTRACT**

An electric camera includes an image sensing device with a light receiving surface having N vertically arranged pixels and an arbitrary number of pixels arranged horizontally, N being equal to or more than three times the number of effective scanning lines M of a display screen of a television system, a driver to drive the image sensing device to vertically mix or cull signal charges accumulated in individual pixels of K pixels to produce, during a vertical effective scanning period of the television system, a number of lines of output signals which corresponds to 1/K the number of vertically arranged pixels N of the image sensing device, K being an integer equal to or less than an integral part of a quotient of N divided by M, and a signal processing unit having a function of generating image signals by using the output signals of the image sensing device.

14 Claims, 8 Drawing Sheets

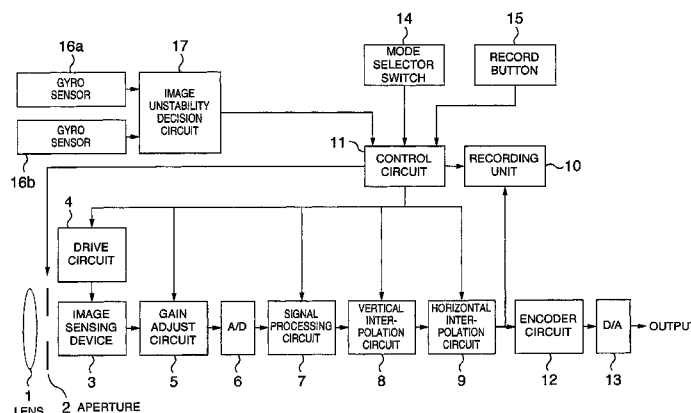


FIG. 1

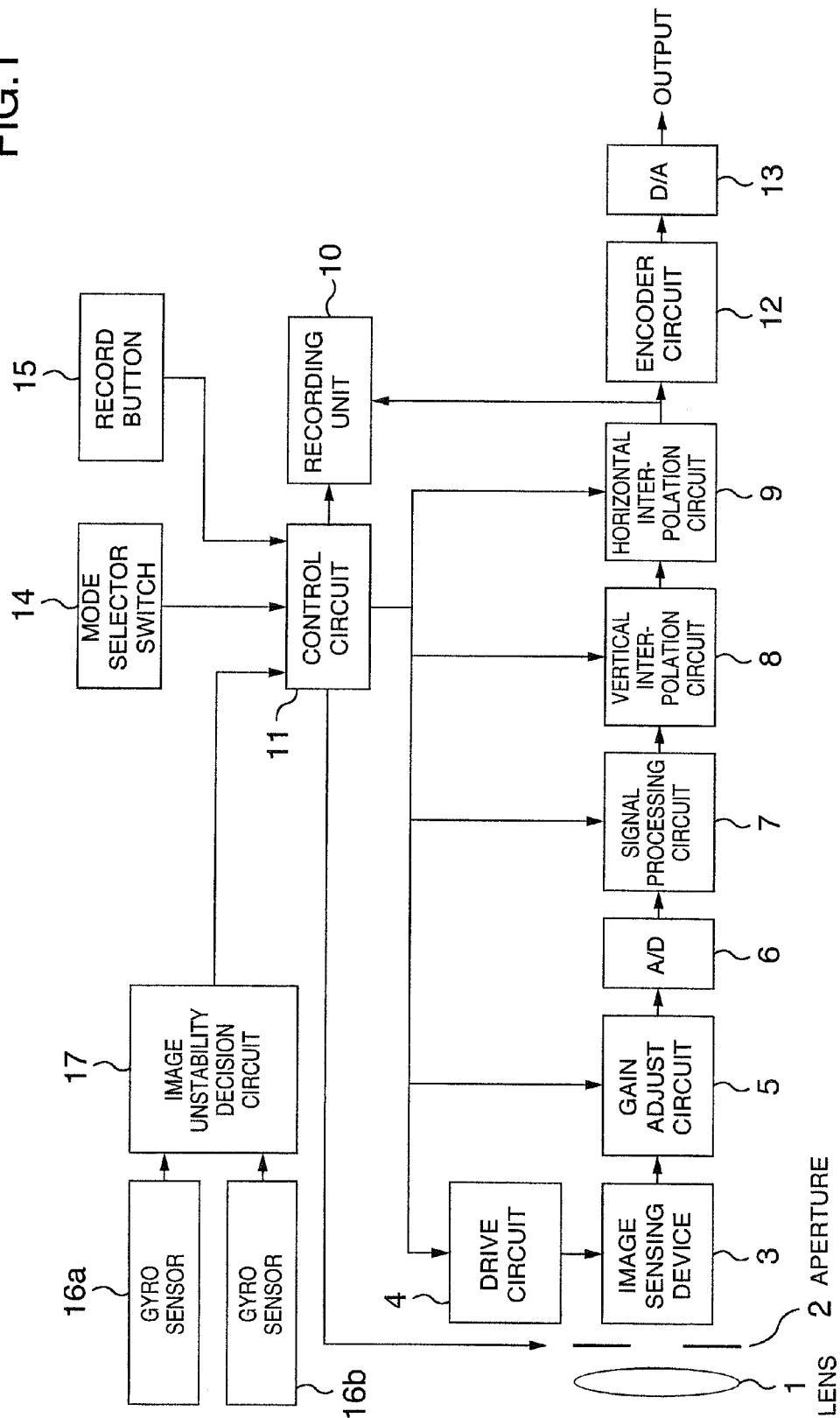


FIG.2

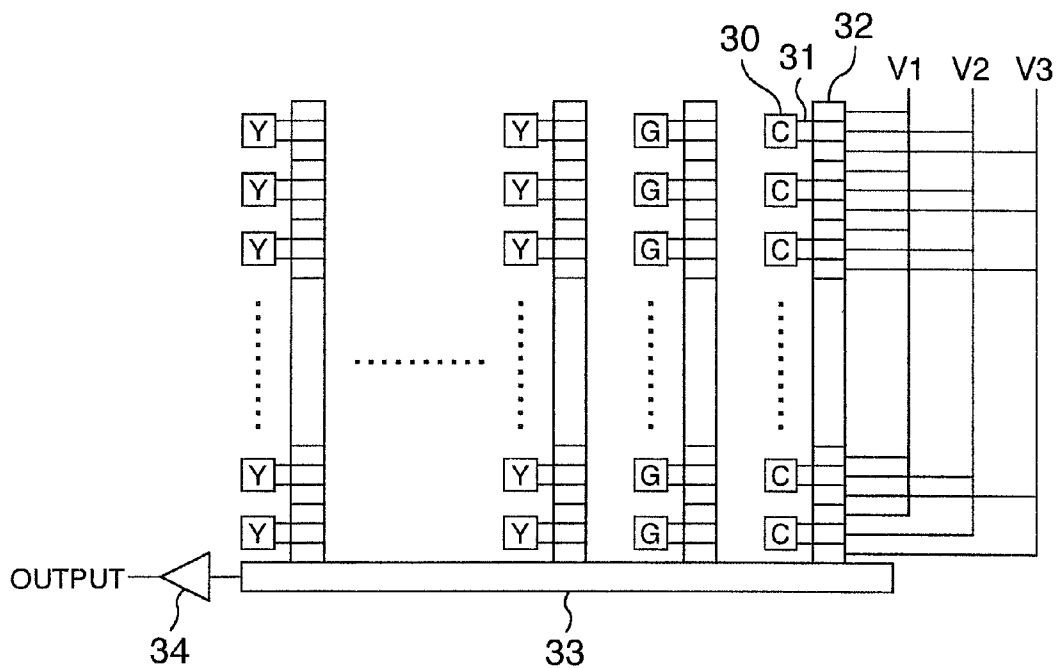


FIG.4

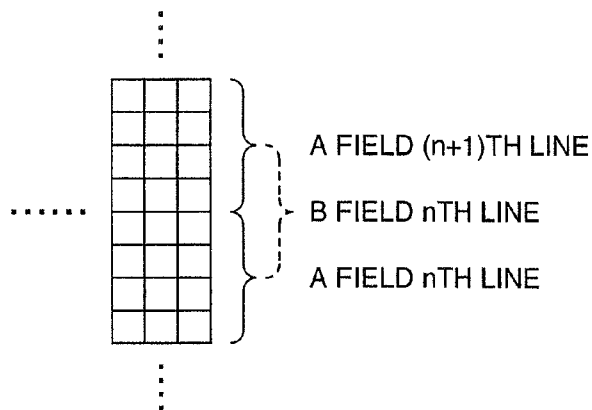
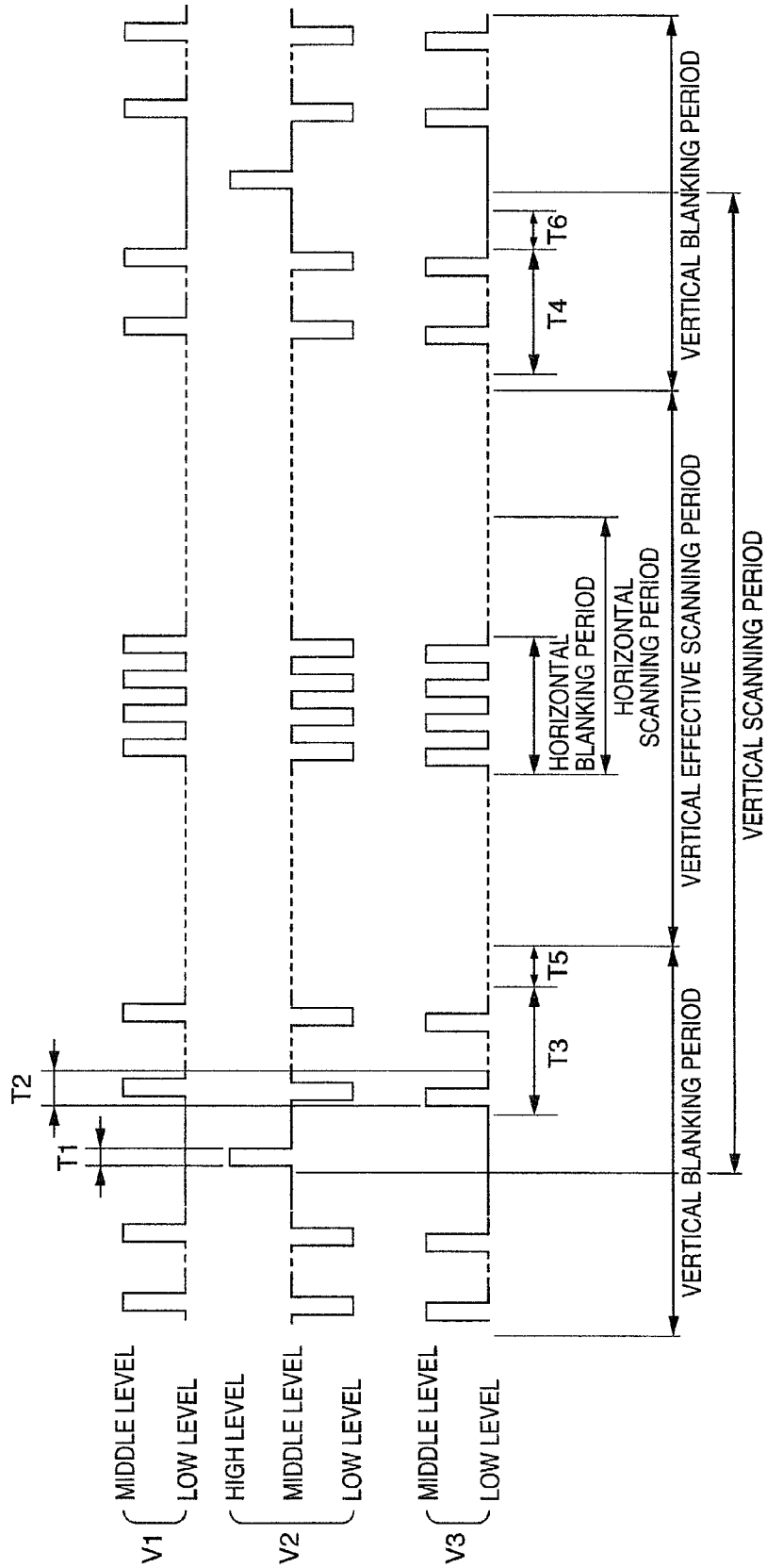


FIG.3



Explore Litigation Insights

Docket Alarm provides insights to develop a more informed litigation strategy and the peace of mind of knowing you're on top of things.

Real-Time Litigation Alerts



Keep your litigation team up-to-date with **real-time alerts** and advanced team management tools built for the enterprise, all while greatly reducing PACER spend.

Our comprehensive service means we can handle Federal, State, and Administrative courts across the country.

Advanced Docket Research



With over 230 million records, Docket Alarm's cloud-native docket research platform finds what other services can't. Coverage includes Federal, State, plus PTAB, TTAB, ITC and NLRB decisions, all in one place.

Identify arguments that have been successful in the past with full text, pinpoint searching. Link to case law cited within any court document via Fastcase.

Analytics At Your Fingertips



Learn what happened the last time a particular judge, opposing counsel or company faced cases similar to yours.

Advanced out-of-the-box PTAB and TTAB analytics are always at your fingertips.

API

Docket Alarm offers a powerful API (application programming interface) to developers that want to integrate case filings into their apps.

LAW FIRMS

Build custom dashboards for your attorneys and clients with live data direct from the court.

Automate many repetitive legal tasks like conflict checks, document management, and marketing.

FINANCIAL INSTITUTIONS

Litigation and bankruptcy checks for companies and debtors.

E-DISCOVERY AND LEGAL VENDORS

Sync your system to PACER to automate legal marketing.