

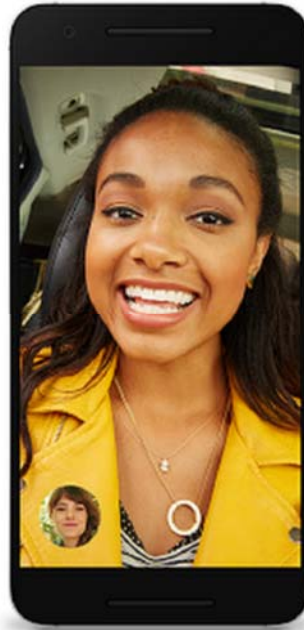
Exhibit 2 – Infringement Claim Chart for U.S. Patent No. 10,104,425
Mobile Phone Instrumentalities

The '425 Patent – Claims	'425 Patent Accused Mobile Phone Instrumentalities
<p>45. A wireless device for communicating information comprising:</p>	<p>Each of the HTC U11, U11 Life, U12+, and Exodus 1 (“the '425 Patent Accused Mobile Phone Instrumentalities”) is a wireless device for communicating information.</p> <p>For example, each of the '425 Patent Accused Mobile Phone Instrumentalities is a mobile phone that communicates information in many ways, such as placing and receiving phone calls, sending and receiving video or audio data signals, or controlling or monitoring smart home devices.</p>
<p>[a] a transceiver configured to receive, via a WiFi network, a first wireless signal corresponding to information directed to the wireless device, the information comprising a call,</p>	<p>Each of the '425 Patent Accused Mobile Phone Instrumentalities has a transceiver configured to receive, via a WiFi network, a first wireless signal corresponding to information directed to the wireless device, the information comprising a call.</p> <p>For example, each of the '425 Patent Accused Mobile Phone Instrumentalities is configured to make or receive WiFi calls. When each of the '425 Patent Accused Mobile Phone Instrumentalities receives a wireless signal containing voice data as part of a WiFi call, regardless of whether each of the '425 Patent Accused Mobile Phone Instrumentalities originally initiated the call, each of the '425 Patent Accused Mobile Phone Instrumentalities is receiving, via a WiFi network, a first wireless signal corresponding to information directed to the wireless device, the information comprising a call.</p> <p>Alternatively, the Google Duo app comes pre-installed on each of the '425 Patent Accused Mobile Phone Instrumentalities. Google Duo is a video calling app that can use a WiFi network for calls. Using the Google Duo app, each of the '425 Patent Accused Mobile Phone Instrumentalities can initiate or receive video calls. When each of the '425 Patent Accused Mobile Phone Instrumentalities receives a wireless signal containing video call data as part of a Google Duo video call, regardless of whether each of the '425 Patent Accused Mobile Phone Instrumentalities originally initiated the call, each of the '425 Patent Accused Mobile Phone Instrumentalities is receiving, via a WiFi network, a first wireless signal corresponding to information directed to the wireless device, the information comprising a call.</p>

Exhibit 2 – Infringement Claim Chart for U.S. Patent No. 10,104,425
Mobile Phone Instrumentalities

Duo, a video calling app for everyone

Duo is a simple, fast one-to-one video calling app for everyone—whether you're on Android or iOS, a fast or slow connection, in New York or New Delhi. Like Allo, Duo is based on your phone number, allowing you to reach anyone in your phonebook. And its simple interface fades away when you're in a call, so it's just the two of you.



<https://blog.google/products/allo/allo-duo-apps-messaging-video/>

Exhibit 2 – Infringement Claim Chart for U.S. Patent No. 10,104,425
Mobile Phone Instrumentalities

	<p>Duo calls are in crisp HD video (up to 720p) and audio. We've optimized Duo to work well even on spotty networks, so if bandwidth is limited it gracefully adjusts quality so you're still able to connect. We also seamlessly transition calls between cellular and Wi-Fi, so you don't need to worry about what network you're on. Finally, we built Duo with privacy and security in mind and all calls on Duo are end-to-end encrypted.</p> <p>https://blog.google/products/allo/allo-duo-apps-messaging-video/</p> <p>Each of the '425 Patent Accused Mobile Phone Instrumentalities uses a Qualcomm Snapdragon Mobile Platform.</p> <p>Given each of the '425 Patent Accused Mobile Phone Instrumentalities's ability to make or receive WiFi calls or Google Duo video calls, a transceiver associated with the Qualcomm Snapdragon Mobile Platform is configured to receive, via a WiFi network, a first wireless signal corresponding to information directed to the wireless device, the information comprising a call.</p>
<p>[b] the first wireless signal being a compressed signal,</p>	<p>The first wireless signal is a compressed signal.</p> <p>For example, when the first wireless signal includes voice data corresponding to the call, at least that voice data is compressed.</p>

Exhibit 2 – Infringement Claim Chart for U.S. Patent No. 10,104,425
Mobile Phone Instrumentalities


	<p>Alternatively, the Google Duo app uses H.265 video compression. Accordingly, when conducting a video call using the Google Duo app, each of the '425 Patent Accused Mobile Phone Instrumentalities receives a first wireless signal that comprises a compressed video signal.</p> <div data-bbox="590 423 688 524">  </div> <div data-bbox="701 423 978 505"> <p>Silver Product Expert Niraj Bhusal</p> </div> <div data-bbox="1730 444 1906 480"> <p>1/3/19 ⋮</p> </div> <p>Hello Thanks for posting in Google Duo Help Community.</p> <p>Google Duo is compatible with H.265 video compression standard. High Efficiency Video Coding (HEVC), or H.265, is a video compression standard designed to substantially improve coding efficiency when compared to its predecessor, the Advanced Video Coding (AVC), or H.264. H.265 promises up to a 50% storage reduction as its algorithm encodes video at the lowest possible bit rate while maintaining a high image quality level, allowing high-quality video to be streamed over even a congested network.</p> <p>https://support.google.com/duo/thread/737807?hl=en</p>
<p>[c] wherein the wireless device is configured to receive an instruction to make the call; and</p>	<p>Each of the '425 Patent Accused Mobile Phone Instrumentalities is configured to receive an instruction to make the call.</p> <p>More specifically, there are a number of methods for instructing each of the '425 Patent Accused Mobile Phone Instrumentalities to make a call, including dialing of a number, or initiation of calls via short cuts for established contacts such as speed dial, as well as voice activated instructions or clicking on a link associated</p>

Exhibit 2 – Infringement Claim Chart for U.S. Patent No. 10,104,425
Mobile Phone Instrumentalities

	<p>with a phone number. Moreover, the Google Duo app on each of the '425 Patent Accused Mobile Phone Instrumentalities can be used to initiate a video call. When any of these methods of initiating calls is used, an instruction is generated that each of the '425 Patent Accused Mobile Phone Instrumentalities receives to make the call.</p>
--	----------------------------------------------------------------------------------------------------------------------------------------------------------------------------------------------------------------------------------------------------------------------------------------------------------------------------------------------------

Explore Litigation Insights

Docket Alarm provides insights to develop a more informed litigation strategy and the peace of mind of knowing you're on top of things.

Real-Time Litigation Alerts



Keep your litigation team up-to-date with **real-time alerts** and advanced team management tools built for the enterprise, all while greatly reducing PACER spend.

Our comprehensive service means we can handle Federal, State, and Administrative courts across the country.

Advanced Docket Research



With over 230 million records, Docket Alarm's cloud-native docket research platform finds what other services can't. Coverage includes Federal, State, plus PTAB, TTAB, ITC and NLRB decisions, all in one place.

Identify arguments that have been successful in the past with full text, pinpoint searching. Link to case law cited within any court document via Fastcase.

Analytics At Your Fingertips



Learn what happened the last time a particular judge, opposing counsel or company faced cases similar to yours.

Advanced out-of-the-box PTAB and TTAB analytics are always at your fingertips.

API

Docket Alarm offers a powerful API (application programming interface) to developers that want to integrate case filings into their apps.

LAW FIRMS

Build custom dashboards for your attorneys and clients with live data direct from the court.

Automate many repetitive legal tasks like conflict checks, document management, and marketing.

FINANCIAL INSTITUTIONS

Litigation and bankruptcy checks for companies and debtors.

E-DISCOVERY AND LEGAL VENDORS

Sync your system to PACER to automate legal marketing.