

# EXHIBIT 6



US006212559B1

(12) **United States Patent**  
**Bixler et al.**

(10) **Patent No.:** **US 6,212,559 B1**  
 (45) **Date of Patent:** **Apr. 3, 2001**

(54) **AUTOMATED CONFIGURATION OF INTERNET-LIKE COMPUTER NETWORKS**

(75) Inventors: **David C. Bixler**, Hermosa Beach; **Eufemia P. Hilger**, Torrance, both of CA (US); **Jeffrey A. Smith**, Albuquerque, NM (US); **Mark R. Wittlin**, Hermosa Beach; **Neil G. Siegel**, Rancho Palos Verdes, both of CA (US)

(73) Assignee: **TRW Inc.**, Redondo Beach, CA (US)

(\*) Notice: Subject to any disclaimer, the term of this patent is extended or adjusted under 35 U.S.C. 154(b) by 0 days.

(21) Appl. No.: **09/181,371**

(22) Filed: **Oct. 28, 1998**

(51) **Int. Cl.**<sup>7</sup> ..... **G06F 15/177**

(52) **U.S. Cl.** ..... **709/221; 709/220; 709/223; 709/227; 709/236; 709/242**

(58) **Field of Search** ..... **709/204-205, 709/220-224, 227-228, 238-242; 345/333-334, 356, 969**

(56) **References Cited**

**U.S. PATENT DOCUMENTS**

5,751,967	*	5/1998	Raab et al.	709/228
5,774,689	*	6/1998	Curtis et al.	709/205
5,838,907	*	11/1998	Hansen	709/220
5,889,954	*	3/1999	Gessel et al.	709/223
5,913,921	*	6/1999	Tosey et al.	709/220
5,983,269	*	11/1999	Mattson et al.	709/221
6,003,075	*	12/1999	Arcndt et al.	709/221
6,012,088	*	1/2000	Li et al.	709/220
6,085,238	*	7/2000	Yuasa et al.	709/223

**FOREIGN PATENT DOCUMENTS**

0797330	9/1997	(EP)	.....	H04L/12/24
0889656	1/1999	(EP)	.....	H04L/12/24

**OTHER PUBLICATIONS**

Dynamic LAN Reconfiguration Mechanism, IBM Technical Disclosure Bulletin vol. 37, No. 11, Nov. 1994, p. 407-410.  
 Intelligent Resource Dimensioning In ATM Networks, ISS Symposium, Apr. 23, 1995, vol. 2.

\* cited by examiner

*Primary Examiner*—Meng-Ai T. An

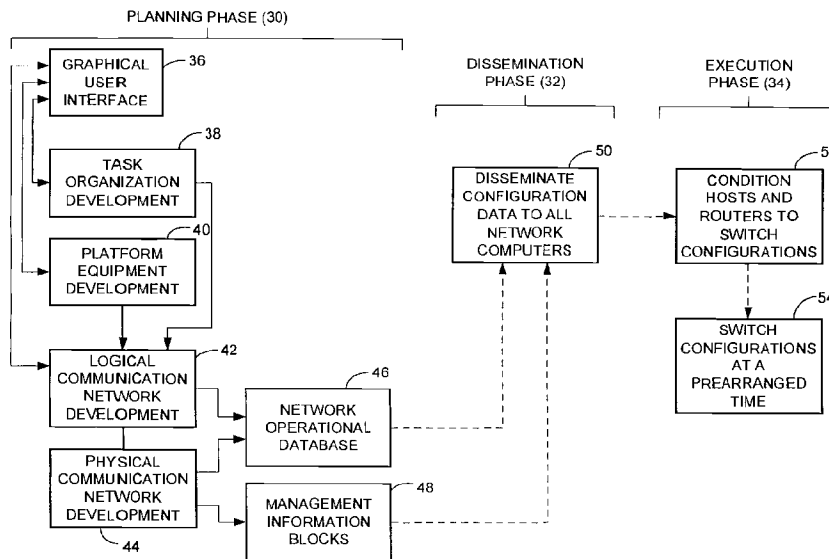
*Assistant Examiner*—Bharat Barot

(74) *Attorney, Agent, or Firm*—Michael S. Yatsko

(57) **ABSTRACT**

A system and corresponding method of its operation, for configuring a communication network of multiple interconnected computers. The system includes a graphical user interface (36) that facilitates the functions of task organization development (38), platform equipment development (40), address book development (60) and logical network development (42) in a simulated planning phase of operation (30). Using the system, an authorized user performs these development functions to define one or more logical communication networks, and then the system automatically generates specifications for a corresponding physical communication network (44), including management information blocks (74). In a dissemination phase of operation (32), the management information blocks are transmitted (50) to the network computers. In an execution phase of operation (34), the received management information blocks are used to condition (52) the network computers to switch to the new configuration upon receipt of a timing or command signal, when the computers all switch to a new configuration (54) at the same time.

**16 Claims, 19 Drawing Sheets**



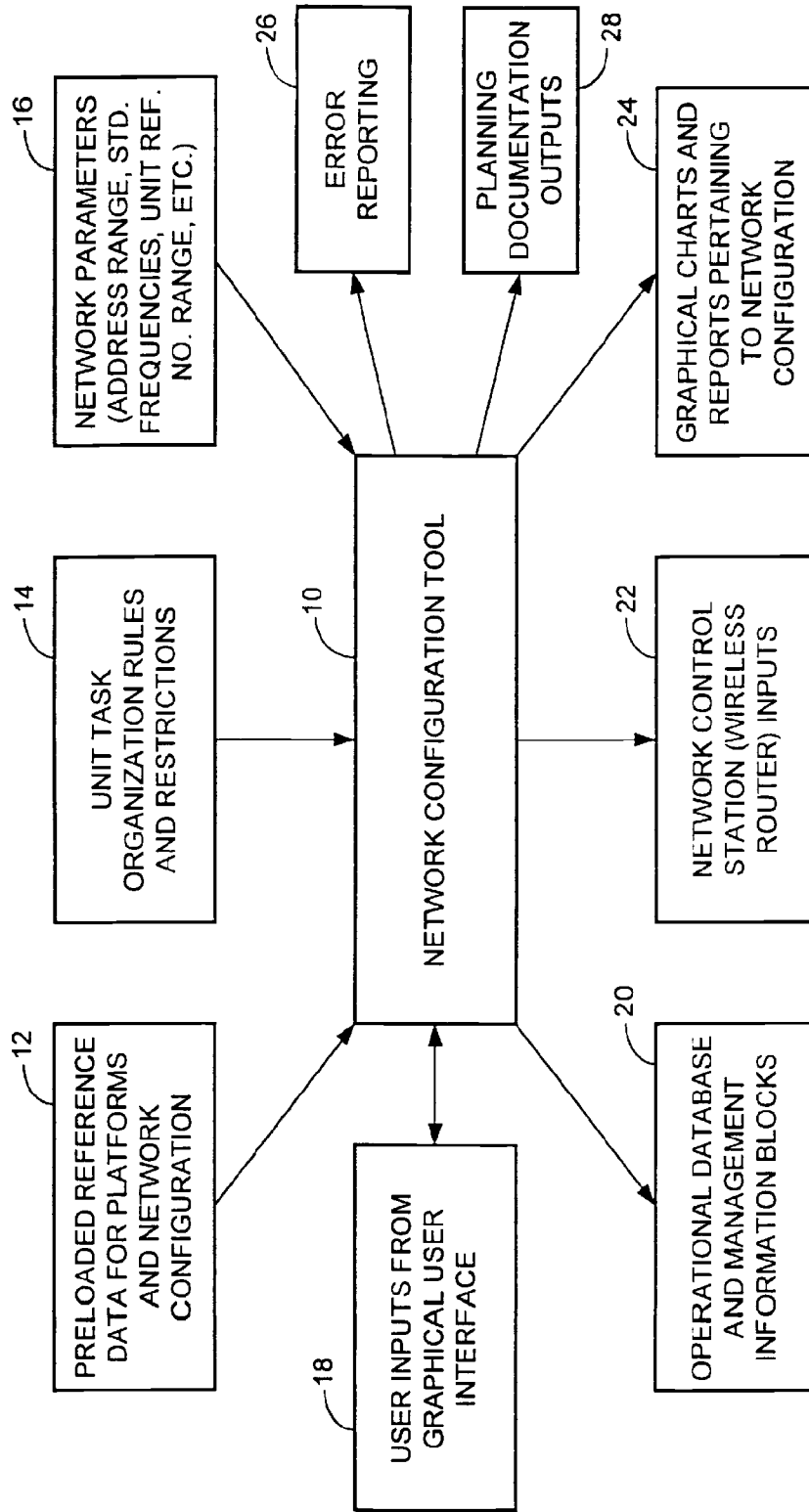


FIG. 1

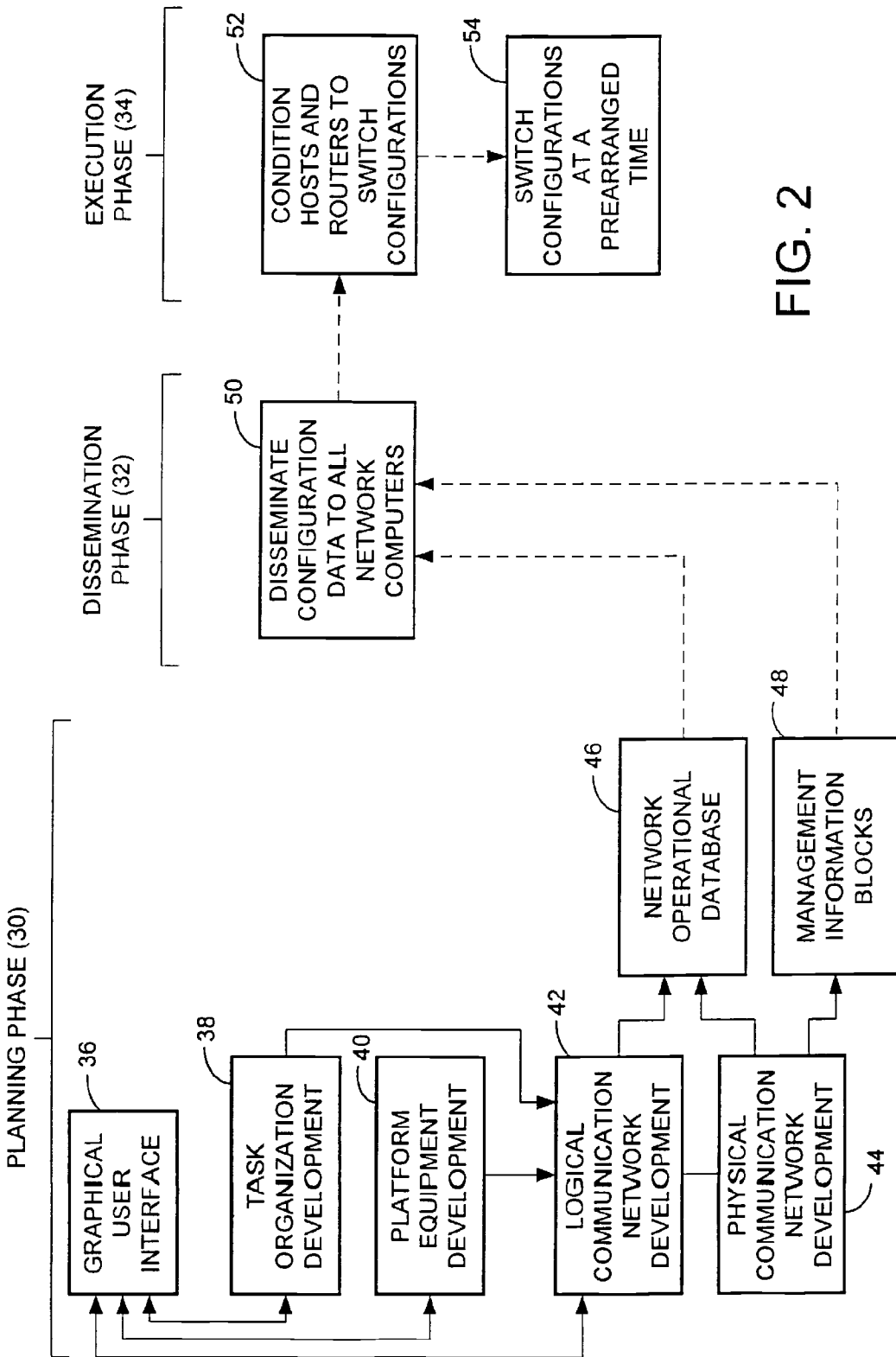
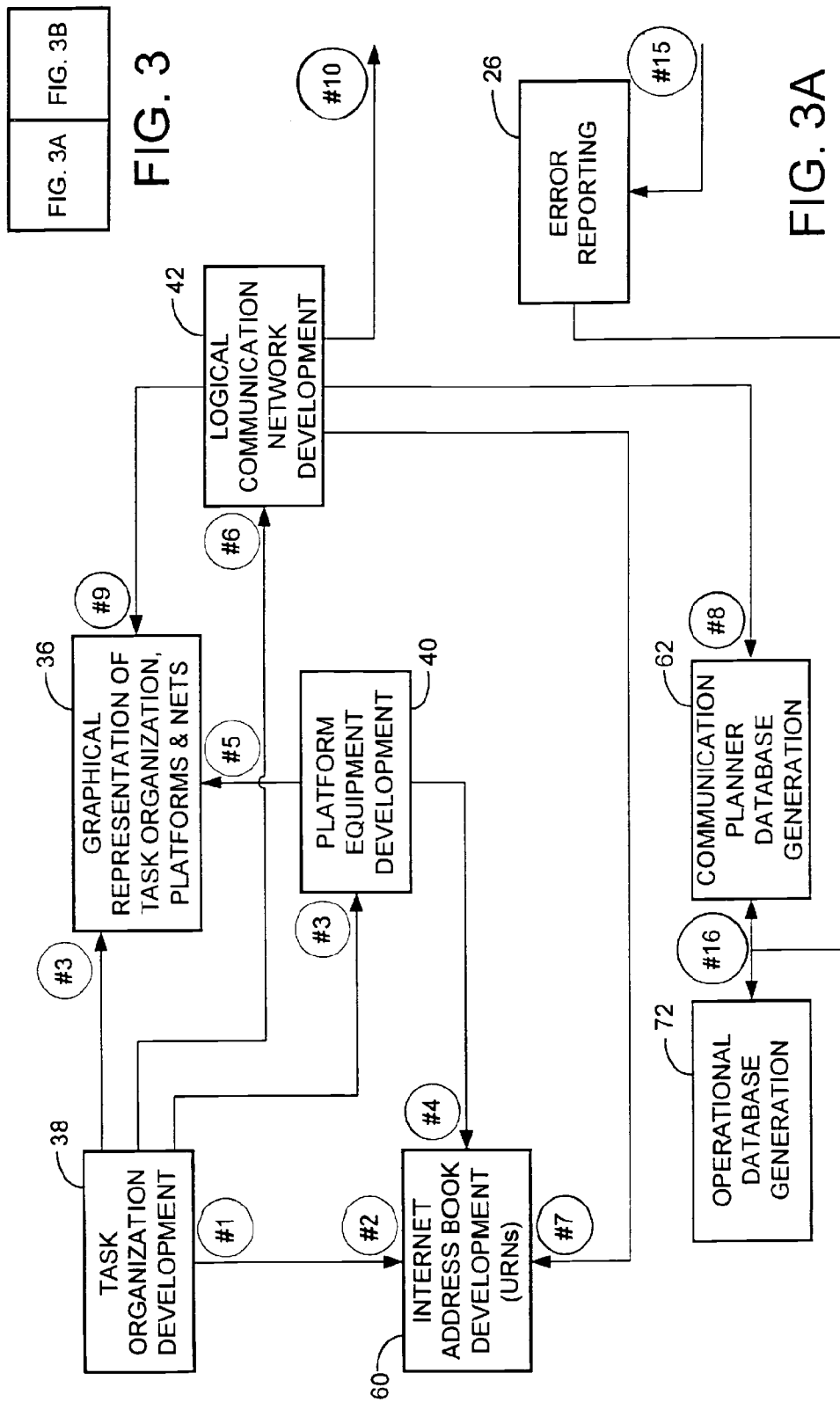


FIG. 2



# Explore Litigation Insights

Docket Alarm provides insights to develop a more informed litigation strategy and the peace of mind of knowing you're on top of things.

## Real-Time Litigation Alerts



Keep your litigation team up-to-date with **real-time alerts** and advanced team management tools built for the enterprise, all while greatly reducing PACER spend.

Our comprehensive service means we can handle Federal, State, and Administrative courts across the country.

## Advanced Docket Research



With over 230 million records, Docket Alarm's cloud-native docket research platform finds what other services can't. Coverage includes Federal, State, plus PTAB, TTAB, ITC and NLRB decisions, all in one place.

Identify arguments that have been successful in the past with full text, pinpoint searching. Link to case law cited within any court document via Fastcase.

## Analytics At Your Fingertips



Learn what happened the last time a particular judge, opposing counsel or company faced cases similar to yours.

Advanced out-of-the-box PTAB and TTAB analytics are always at your fingertips.

## API

Docket Alarm offers a powerful API (application programming interface) to developers that want to integrate case filings into their apps.

## LAW FIRMS

Build custom dashboards for your attorneys and clients with live data direct from the court.

Automate many repetitive legal tasks like conflict checks, document management, and marketing.

## FINANCIAL INSTITUTIONS

Litigation and bankruptcy checks for companies and debtors.

## E-DISCOVERY AND LEGAL VENDORS

Sync your system to PACER to automate legal marketing.