

EXHIBIT D



US006728766B2

(12) **United States Patent**
Cox et al.

(10) **Patent No.:** US 6,728,766 B2
(45) **Date of Patent:** Apr. 27, 2004

(54) **METHODS, SYSTEMS AND COMPUTER PROGRAM PRODUCTS FOR LICENSE USE MANAGEMENT ON A NETWORK**

FOREIGN PATENT DOCUMENTS

WO WO 98/50853 11/1998 G06F9/44

(75) Inventors: **David E. Cox**, Raleigh, NC (US);
David L. Kaminsky, Chapel Hill, NC (US); **David B. Lindquist**, Raleigh, NC (US)

OTHER PUBLICATIONS

"A Common Desktop Environment for Platforms Based on the UNIX Operating System," By B.E. Cripe, J.A. Brewster, and D.E. Laursen. Hewlett-Packard Journal, vol. 47, No. 2, Apr. 1, 1996, pp. 6-14.

(73) Assignee: **International Business Machines Corp.**, Armonk, NY (US)

(List continued on next page.)

(*) Notice: Subject to any disclaimer, the term of this patent is extended or adjusted under 35 U.S.C. 154(b) by 0 days.

Primary Examiner—Frantz B. Jean
(74) *Attorney, Agent, or Firm*—Myers Bigel Sibley & Sajovec; Jeanine S. Ray-Yarletts

(21) Appl. No.: **09/829,854**

(57) **ABSTRACT**

(22) Filed: **Apr. 10, 2001**

Management of configurable applications programs on a network is provided by using two program files for each configurable application program. The two program files are provided to a network server station which operates as the on-demand server for software deployment and may also act as the application server. The on-demand server makes the first (configuration manager) program available to an administrator to obtain preferences for the configurable preferences of the application program which have been designated as administrator preferences. The on-demand server also provides a second (application launcher) program to its client stations. The application launcher program not only provides for a user interface to execute the application program itself but also allows a user to specify one or more of the configurable parameters of the application program. An icon is displayed on the screen of the client station through which a user may initiate execution of the application program. The application launcher program provides the identity of the user to the server along with the request to initiate execution of the application program. The on-demand server then initiates execution of the application program using stored values for the user and administrator set preferences or, if no preferences have yet been obtained for the particular user, obtains user preferences before initiating execution of the application program.

(65) **Prior Publication Data**

US 2001/0013064 A1 Aug. 9, 2001

Related U.S. Application Data

(62) Division of application No. 09/211,529, filed on Dec. 14, 1998, now Pat. No. 6,324,578.

(51) **Int. Cl.**⁷ **G06F 15/177**

(52) **U.S. Cl.** **709/220; 709/223; 709/224; 713/1; 713/2; 713/100**

(58) **Field of Search** **709/223, 224, 709/220, 229; 705/59; 713/200, 201, 1, 2, 100**

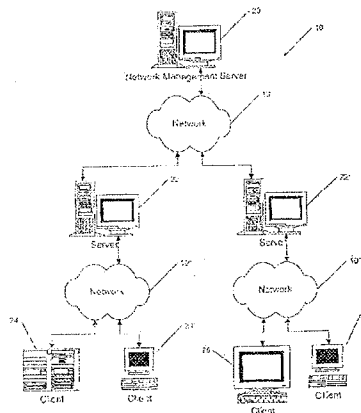
(56) **References Cited**

U.S. PATENT DOCUMENTS

5,204,897	A *	4/1993	Wyman	710/200
5,260,999	A *	11/1993	Wyman	705/59
5,263,165	A	11/1993	Jamis	395/725
5,440,739	A	8/1995	Beck et al.	70/221
5,554,979	A	9/1996	Kohar et al.	340/825.72
5,634,010	A	5/1997	Cisco et al.	709/223
5,655,081	A	8/1997	Bonnell et al.	709/202
5,671,412	A *	9/1997	Christiano	707/104.1

(List continued on next page.)

18 Claims, 5 Drawing Sheets



US 6,728,766 B2

Page 2

U.S. PATENT DOCUMENTS

5,680,615 A	10/1997	Marlin et al.	707/103	6,189,051 B1	2/2001	Oh et al.	710/33
5,689,708 A	11/1997	Regnier et al.	709/302	6,192,414 B1	2/2001	Horn	709/239
5,708,709 A	1/1998	Rose	380/4	6,195,432 B1	2/2001	Takahashi	380/278
5,745,879 A	4/1998	Wyman	705/1	6,202,206 B1	3/2001	Dean et al.	717/11
5,748,896 A	5/1998	Daly et al.	709/223	OTHER PUBLICATIONS			
5,752,041 A *	5/1998	Fosdick	717/178	"Administration of Graphic User Interface and Multimedia Objects Using Cooperative Processing," IBM Technical Disclosure Bulletin, vol. 37, No. 9, Sep. 1, 1994, pp. 675-678, XP000475542.			
5,764,887 A	6/1998	Kells et al.	713/200	http://nf/pdc97/profiles_and_policies.htm "Guide to Microsoft Windows NT 4.0 Profiles and Policies" pp. 1-76.			
5,771,354 A	6/1998	Crawford	709/229	http://www.ietf.org/html.charters/acap-charter.html "Application Configuration Access Protocol (acap)," 68 pages.			
5,778,368 A	7/1998	Hogan et al.	707/10	IBM Network Station Manager for Windows NT Server 4.0, Chapter 5. Using the IBM Network Station Manager, pp. 5-1 to 5-15.			
5,809,251 A	9/1998	May et al.	709/223	http://www.software.ibm.com/os/warp/library/sq202822.htm, "WorkSpace on-Demand Handbook," Chapters 2.3.1; 6.2; 6.3; 6.3.1; 6.3.3; 6.5.			
5,813,009 A	9/1998	Johnson et al.	797/100	http://www.triteal.com/SoftNC, Java Desktop Environment from Triteal, pp. 1-2.			
5,845,065 A *	12/1998	Conte et al.	713/200	http://java.sun.com/products/hot-javaviews/admin.html, "HotJava Views," pp. 1-24.			
5,845,077 A	12/1998	Fawcett	709/221	http://esuite.lotus.com/eSuite/eSuite, "The Right Work Environment for Network Centric Computing," 24 pages.			
5,848,243 A	12/1998	Kulkarni et al.	709/224	TME 10 <i>Software Distribution User's Guide</i> , Version 3.1, Chapters, 1, 4 and 5.			
5,875,327 A	2/1999	Brandt et al.	713/1	* cited by examiner			
5,881,236 A	3/1999	Dickey	709/221				
5,911,066 A	6/1999	Williams et al.	709/300				
5,933,601 A	8/1999	Fanshier et al.	709/223				
6,021,438 A *	2/2000	Duvvoori et al.	709/224				
6,070,190 A	5/2000	Reps et al.	709/224				
6,098,067 A	8/2000	Erickson	707/10				
6,105,063 A	8/2000	Hayes, Jr.	709/223				
6,105,066 A	8/2000	Hayes, Jr.	709/226				
6,105,069 A *	8/2000	Franklyn et al.	709/229				
6,108,712 A	8/2000	Hayes, Jr.	709/246				
6,115,040 A	9/2000	Bladow et al.	345/335				
6,158,010 A	12/2000	Moriconi et al.	713/201				
6,175,363 B1	1/2001	Williams et al.	345/334				
6,175,832 B1	1/2001	Luzzi et al.	707/10				
6,182,142 B1	1/2001	Win et al.	709/229				

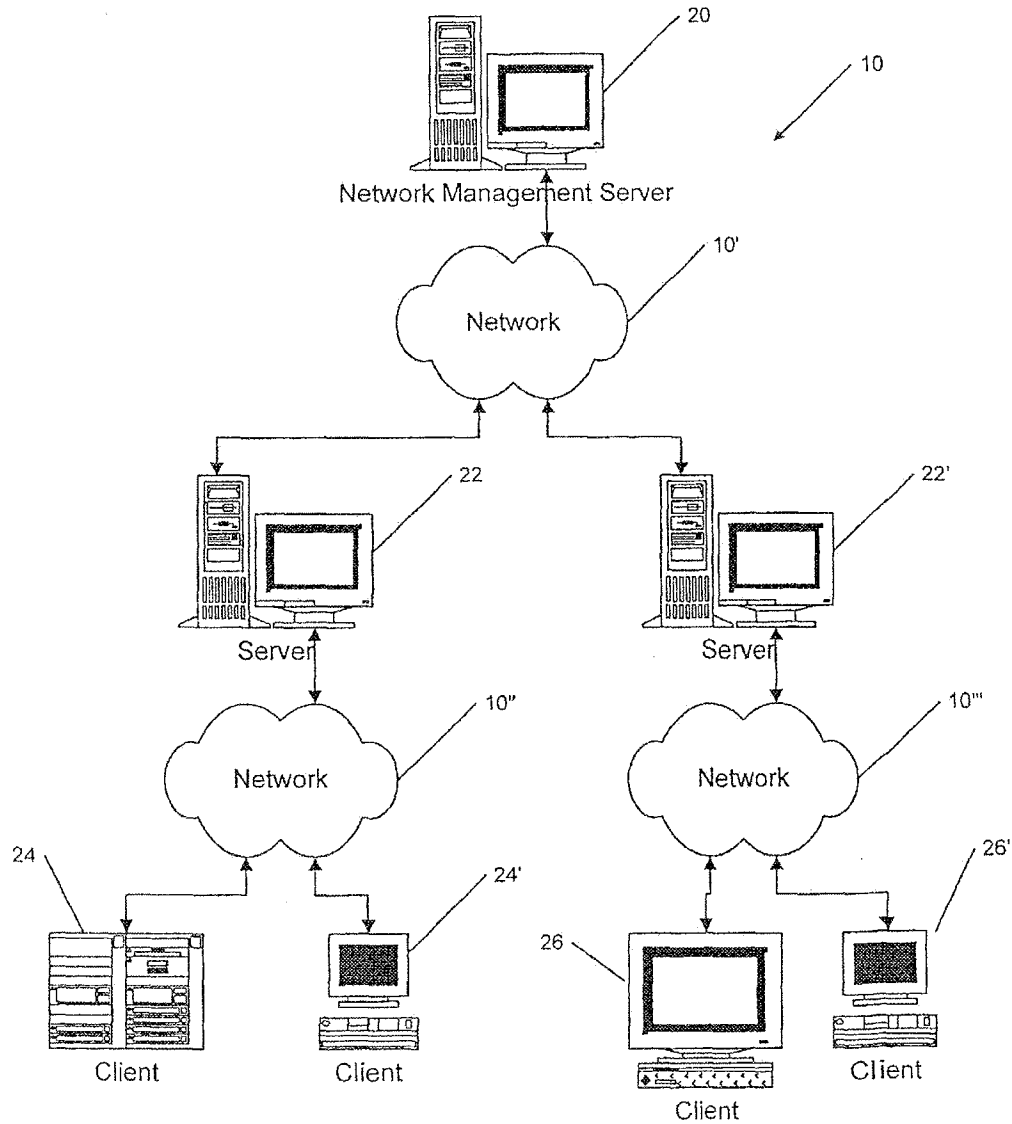


FIG. 1

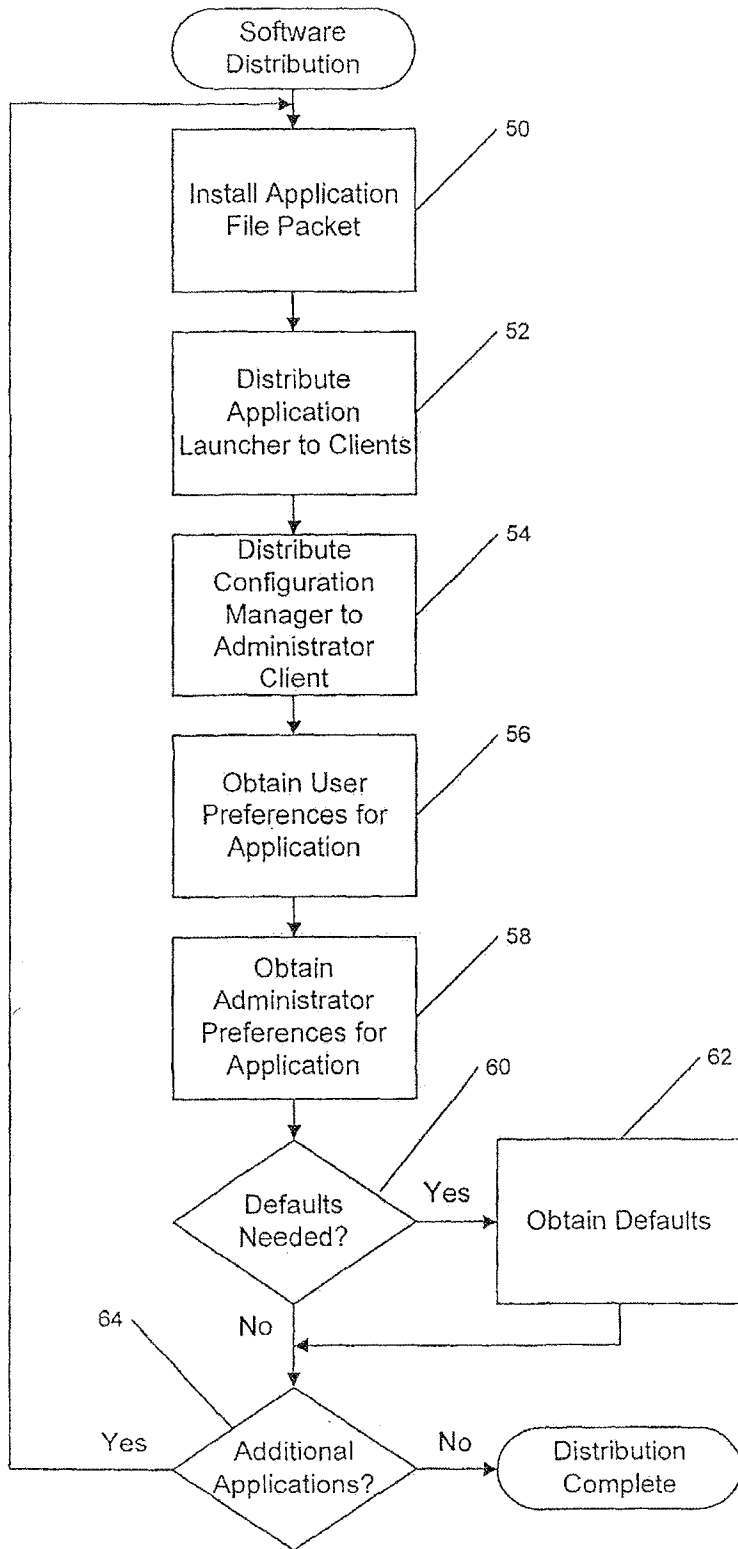


FIG. 2

Explore Litigation Insights

Docket Alarm provides insights to develop a more informed litigation strategy and the peace of mind of knowing you're on top of things.

Real-Time Litigation Alerts



Keep your litigation team up-to-date with **real-time alerts** and advanced team management tools built for the enterprise, all while greatly reducing PACER spend.

Our comprehensive service means we can handle Federal, State, and Administrative courts across the country.

Advanced Docket Research



With over 230 million records, Docket Alarm's cloud-native docket research platform finds what other services can't. Coverage includes Federal, State, plus PTAB, TTAB, ITC and NLRB decisions, all in one place.

Identify arguments that have been successful in the past with full text, pinpoint searching. Link to case law cited within any court document via Fastcase.

Analytics At Your Fingertips



Learn what happened the last time a particular judge, opposing counsel or company faced cases similar to yours.

Advanced out-of-the-box PTAB and TTAB analytics are always at your fingertips.

API

Docket Alarm offers a powerful API (application programming interface) to developers that want to integrate case filings into their apps.

LAW FIRMS

Build custom dashboards for your attorneys and clients with live data direct from the court.

Automate many repetitive legal tasks like conflict checks, document management, and marketing.

FINANCIAL INSTITUTIONS

Litigation and bankruptcy checks for companies and debtors.

E-DISCOVERY AND LEGAL VENDORS

Sync your system to PACER to automate legal marketing.