

EXHIBIT B



US006324578B1

(12) **United States Patent**
Cox et al.

(10) **Patent No.:** US 6,324,578 B1
(45) **Date of Patent:** Nov. 27, 2001

(54) **METHODS, SYSTEMS AND COMPUTER PROGRAM PRODUCTS FOR MANAGEMENT OF CONFIGURABLE APPLICATION PROGRAMS ON A NETWORK**

(75) **Inventors:** David E. Cox, Raleigh; Kent F. Hayes, Jr.; David L. Kaminsky, both of Chapel Hill; David B. Lindquist, Raleigh, all of NC (US)

(73) **Assignee:** International Business Machines Corporation, Armonk, NY (US)

(*) **Notice:** Subject to any disclaimer, the term of this patent is extended or adjusted under 35 U.S.C. 154(b) by 0 days.

(21) **Appl. No.:** 09/211,529

(22) **Filed:** Dec. 14, 1998

(51) **Int. Cl.⁷** G06F 11/00; G06F 15/16

(52) **U.S. Cl.** 709/223; 709/224; 709/225; 709/201; 709/310; 707/103

(58) **Field of Search** 709/223, 224, 709/310, 201, 225; 707/103

(56) **References Cited**

U.S. PATENT DOCUMENTS

5,263,165	11/1993	Janis	395/725
5,440,739	* 8/1995	Beck et al.	70/221
5,554,979	* 9/1996	Kohar et al.	340/825,72
5,634,010	5/1997	Cisco et al.	709/223
5,655,081	8/1997	Bonnell et al.	709/202
5,680,615	* 10/1997	Marlin et al.	707/103
5,689,708	11/1997	Regnier et al.	709/302
5,745,879	* 4/1998	Wyman	705/1
5,748,896	5/1998	Daly et al.	709/223
5,764,887	6/1998	Kells et al.	713/200

(List continued on next page.)

FOREIGN PATENT DOCUMENTS

WO 98/50853 11/1998 (WO) G06F9/44

OTHER PUBLICATIONS

http://nf/pdc97/profiles and policies.htm "Guide to Microsoft Windows NT 4.0 Profiles and Policies" pp. 1-76.
http://www.icif.org/html.charters/acap-charter.html "Application Configuration Access Protocol (acap)," 68 pages.
IBM Network Station Manager for Windows NT Server 4.0, Chapter 5. Using the IBM Network Station Manager, pp. 5-1 to 5-15.

(List continued on next page.)

Primary Examiner—Ayaz Sheikh

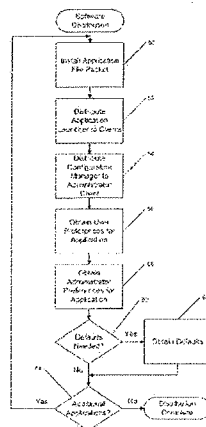
Assistant Examiner—Frantz B. Jean

(74) *Attorney, Agent, or Firm*—Jeanine S. Ray-Yarletts; Myers Bigel Sibley & Sajovec

(57) **ABSTRACT**

Management of configurable applications programs on a network is provided by using two program files for each configurable application program. The two program files are provided to a network server station which operates as the on-demand server for software deployment and may also act as the application server. The on-demand server makes the first (configuration manager) program available to an administrator to obtain preferences for the configurable preferences of the application program which have been designated as administrator preferences. The on-demand server also provides a second (application launcher) program to its client stations. The application launcher program not only provides for a user interface to execute the application program itself but also allows a user to specify one or more of the configurable parameters of the application program. An icon is displayed on the screen of the client station through which a user may initiate execution of the application program. The application launcher program provides the identity of the user to the server along with the request to initiate execution of the application program. The on-demand server then initiates execution of the application program using stored values for the user and administrator set preferences or, if no preferences have yet been obtained for the particular user, obtains user preferences before initiating execution of the application program.

46 Claims, 5 Drawing Sheets



US 6,324,578 B1

Page 2

U.S. PATENT DOCUMENTS

5,771,354	6/1998	Crawford	709/229
5,778,368	7/1998	Hogan et al.	707/10
5,809,251	9/1998	May et al.	709/223
5,813,009	9/1998	Johnson et al.	797/100
5,845,077	12/1998	Fawcett	709/221
5,848,243	* 12/1998	Kulkarni et al.	709/224
5,875,327	* 2/1999	Brandt et al.	713/1
5,881,236	3/1999	Dickey	709/221
5,911,066	* 6/1999	Williams et al.	709/300
5,933,601	8/1999	Fanshier et al.	709/223
6,070,190	* 5/2000	Reps et al.	709/224
6,098,067	8/2000	Erickson	707/10
6,105,063	* 8/2000	Hayes, Jr.	709/223
6,105,066	* 8/2000	Hayes, Jr.	709/226
6,105,069	* 8/2000	Franklin et al.	709/229
6,108,712	* 8/2000	Hayes, Jr.	709/246
6,115,040	9/2000	Bladow et al.	345/335
6,158,010	12/2000	Moriconi et al.	713/201
6,175,363	* 1/2001	Williams et al.	345/334
6,175,832	* 1/2001	Luzzi et al.	707/10
6,189,051	2/2001	Oh et al.	710/33
6,192,414	* 2/2001	Horn	709/239
6,195,432	2/2001	Takahashi	380/278
6,202,206	3/2001	Dean et al.	717/11

OTHER PUBLICATIONS

<http://www.software.ibm.com/os/warp/library/sq202822.htm>, "WorkSpace on-Demand Handbook," Chapters 2.3.1; 6.2;6.3;6.3.1; 6.3.3; 6.5.

<http://www.triteal.com/SoftNC>, Java Desktop Environment from Triteal, pp. 1-2.

<http://java.sun.com/products/hot-javaviews/admin.html>, "HotJava Views," pp. 1-24.

<http://esuite.lotus.com/eSuite/eSuite>, "The Right Work Environment for Network Centric Computing," 24 pages.

TME 10 Software Distribution User's Guide, Version 3.1, Chapters 1, 4 and 5.

"A Common Desktop Environment for Platforms Based on the UNIX Operating System," By B. E. Cripe, J. A. Brewster, and D. E. Laursen. Hewlett-Packard Journal, vol. 47, No. 2, Apr. 1, 1996, pp. 6-14.

"Administration of Graphic User Interface and Multimedia Objects Using Cooperative Processing," IBM Technical Disclosure Bulletin, vol. 37, No. 9, Sep. 1, 1994, pp. 675-678, XP000475542.

* cited by examiner

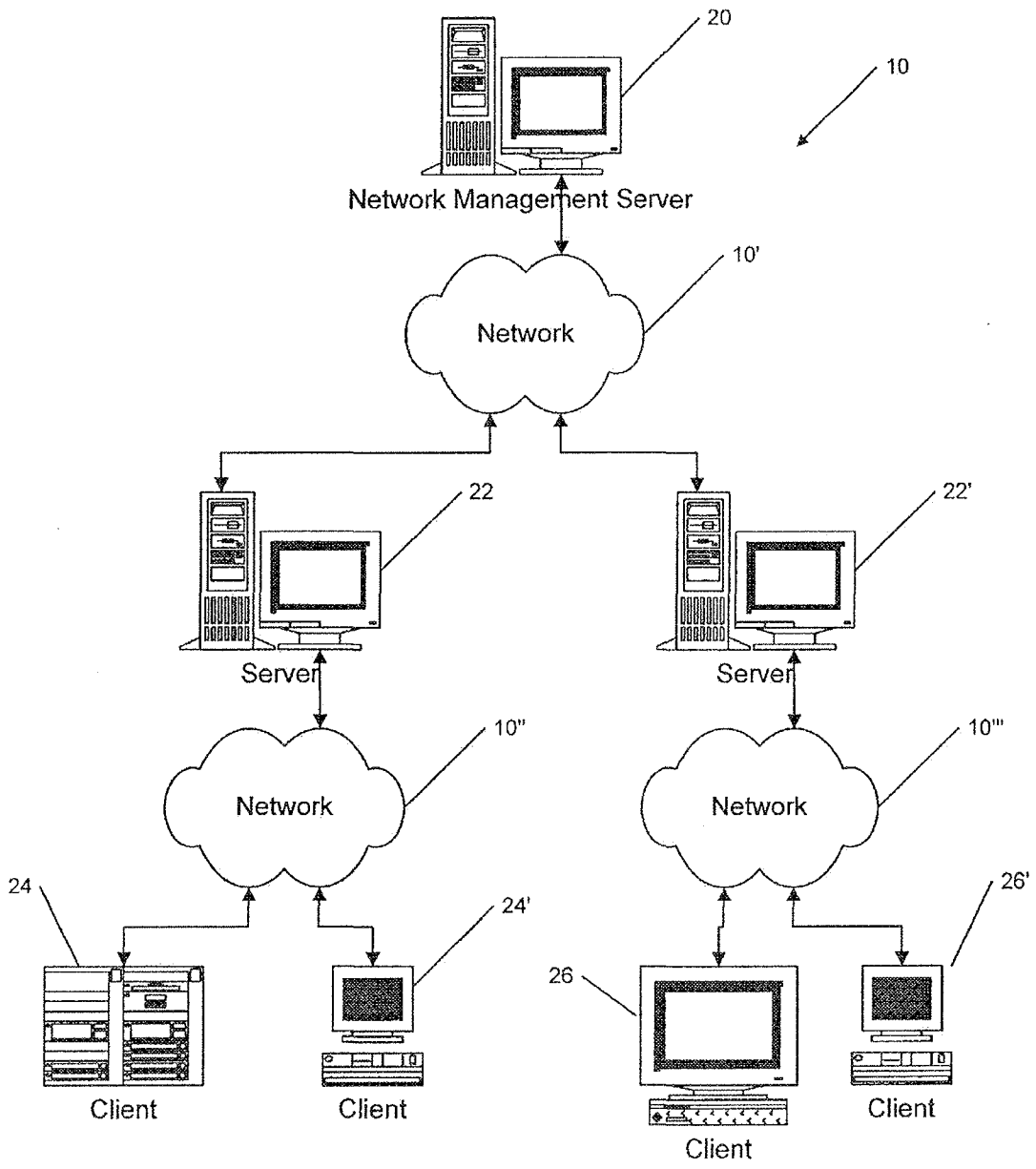


FIG. 1

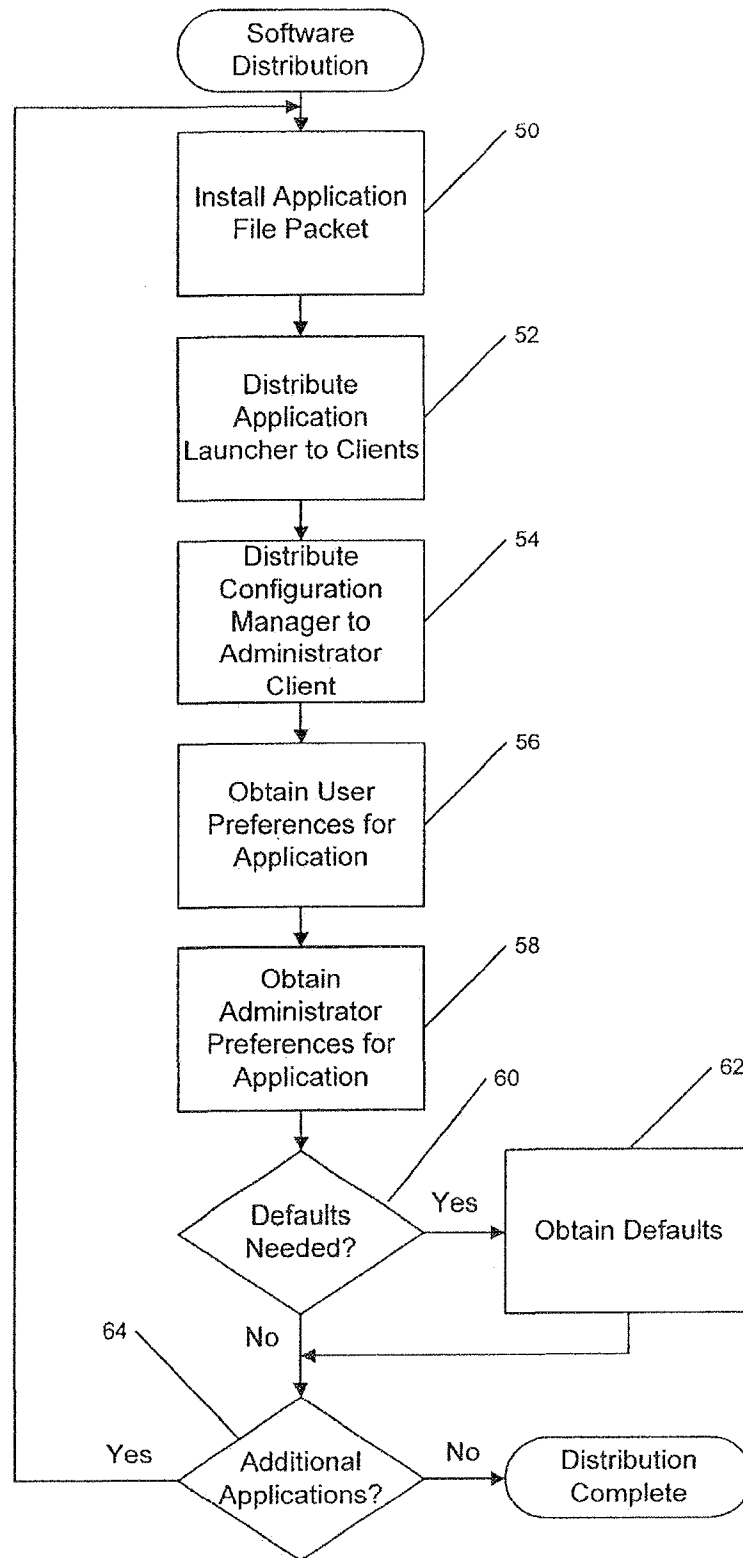


FIG. 2

Explore Litigation Insights

Docket Alarm provides insights to develop a more informed litigation strategy and the peace of mind of knowing you're on top of things.

Real-Time Litigation Alerts



Keep your litigation team up-to-date with **real-time alerts** and advanced team management tools built for the enterprise, all while greatly reducing PACER spend.

Our comprehensive service means we can handle Federal, State, and Administrative courts across the country.

Advanced Docket Research



With over 230 million records, Docket Alarm's cloud-native docket research platform finds what other services can't. Coverage includes Federal, State, plus PTAB, TTAB, ITC and NLRB decisions, all in one place.

Identify arguments that have been successful in the past with full text, pinpoint searching. Link to case law cited within any court document via Fastcase.

Analytics At Your Fingertips



Learn what happened the last time a particular judge, opposing counsel or company faced cases similar to yours.

Advanced out-of-the-box PTAB and TTAB analytics are always at your fingertips.

API

Docket Alarm offers a powerful API (application programming interface) to developers that want to integrate case filings into their apps.

LAW FIRMS

Build custom dashboards for your attorneys and clients with live data direct from the court.

Automate many repetitive legal tasks like conflict checks, document management, and marketing.

FINANCIAL INSTITUTIONS

Litigation and bankruptcy checks for companies and debtors.

E-DISCOVERY AND LEGAL VENDORS

Sync your system to PACER to automate legal marketing.