



(19) **United States**

(12) **Patent Application Publication**  
**Belady et al.**

(10) **Pub. No.: US 2014/0096837 A1**

(43) **Pub. Date: Apr. 10, 2014**

(54) **GAS SUPPLY SHOCK ABSORBER FOR  
DATACENTER POWER GENERATION**

(52) **U.S. Cl.**  
USPC ..... 137/14; 138/26

(71) Applicant: **MICROSOFT CORPORATION,**  
Redmond, WA (US)

(57) **ABSTRACT**

(72) Inventors: **Christian L. Belady,** Mercer Island, WA  
(US); **Sean M. James,** Olympia, WA  
(US)

Gas supply pressure spikes are absorbed and leveled-out by a gas supply shock absorber comprising gas storage, which is charged during positive pressure spikes and utilized during negative pressure spikes. The gas supply shock absorber also comprises pressure sensing and regulating valves, which direct positive pressure spikes to the gas storage and draw gas from storage during negative pressure spikes. A backflow preventer limits shock absorption to co-located equipment, but gas supply shock absorbers operate in aggregate to create additional demand during positive pressure spikes and reduced demand during negative pressure spikes. If the gas storage has sufficient gas, a co-located data center utilizes such gas for increased electrical power generation during increased processing activity, which can be requested or generated. Conversely, if the gas storage has insufficient gas, and a negative pressure spike occurs, the data center throttles down or offloads processing.

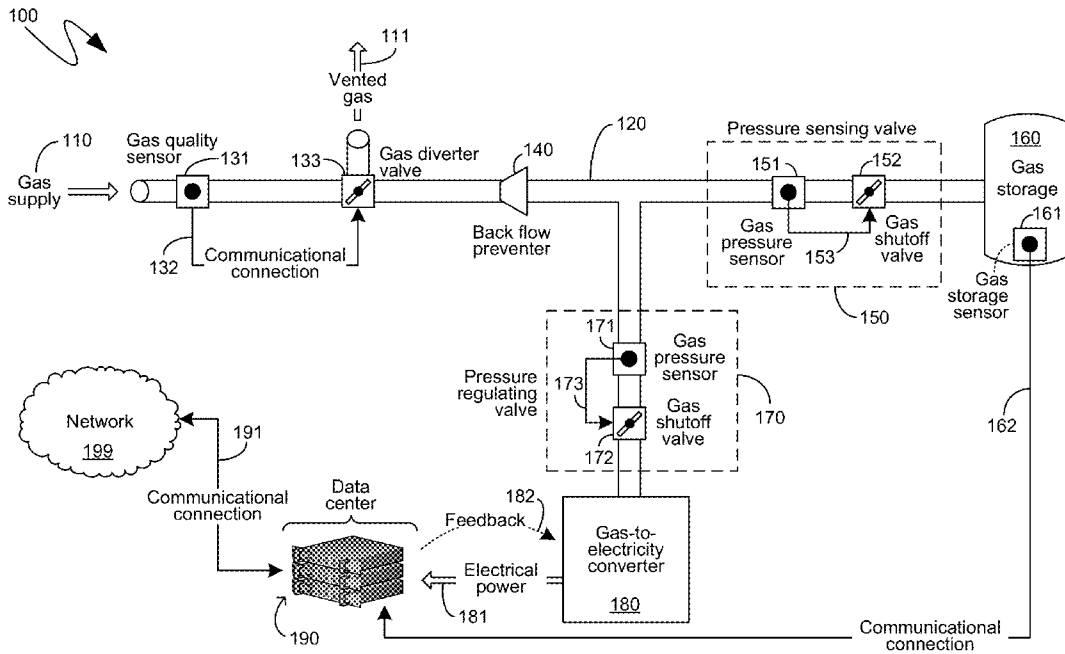
(73) Assignee: **MICROSOFT CORPORATION,**  
Redmond, WA (US)

(21) Appl. No.: **13/649,100**

(22) Filed: **Oct. 10, 2012**

**Publication Classification**

(51) **Int. Cl.**  
**F16L 55/04** (2006.01)



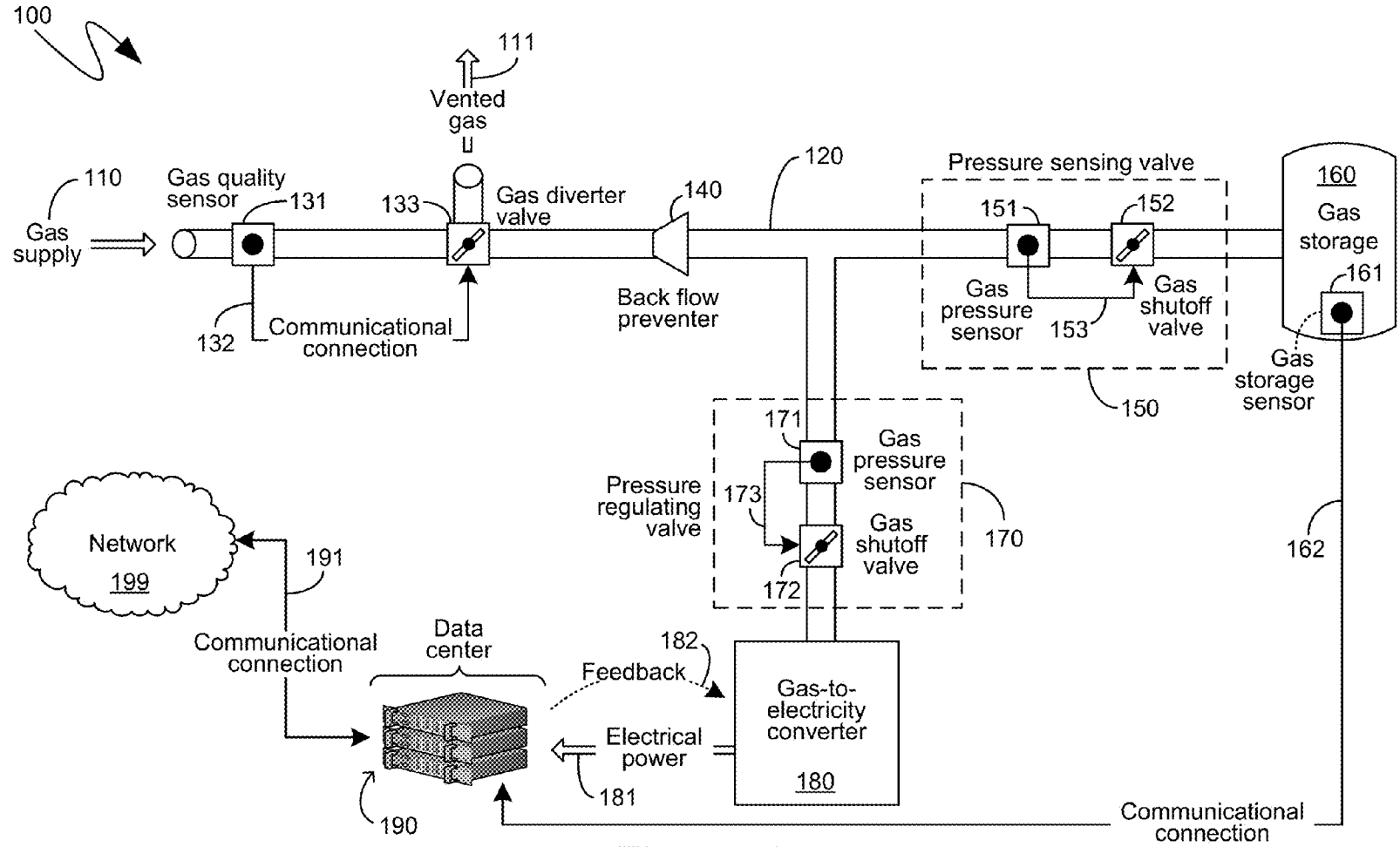


Figure 1

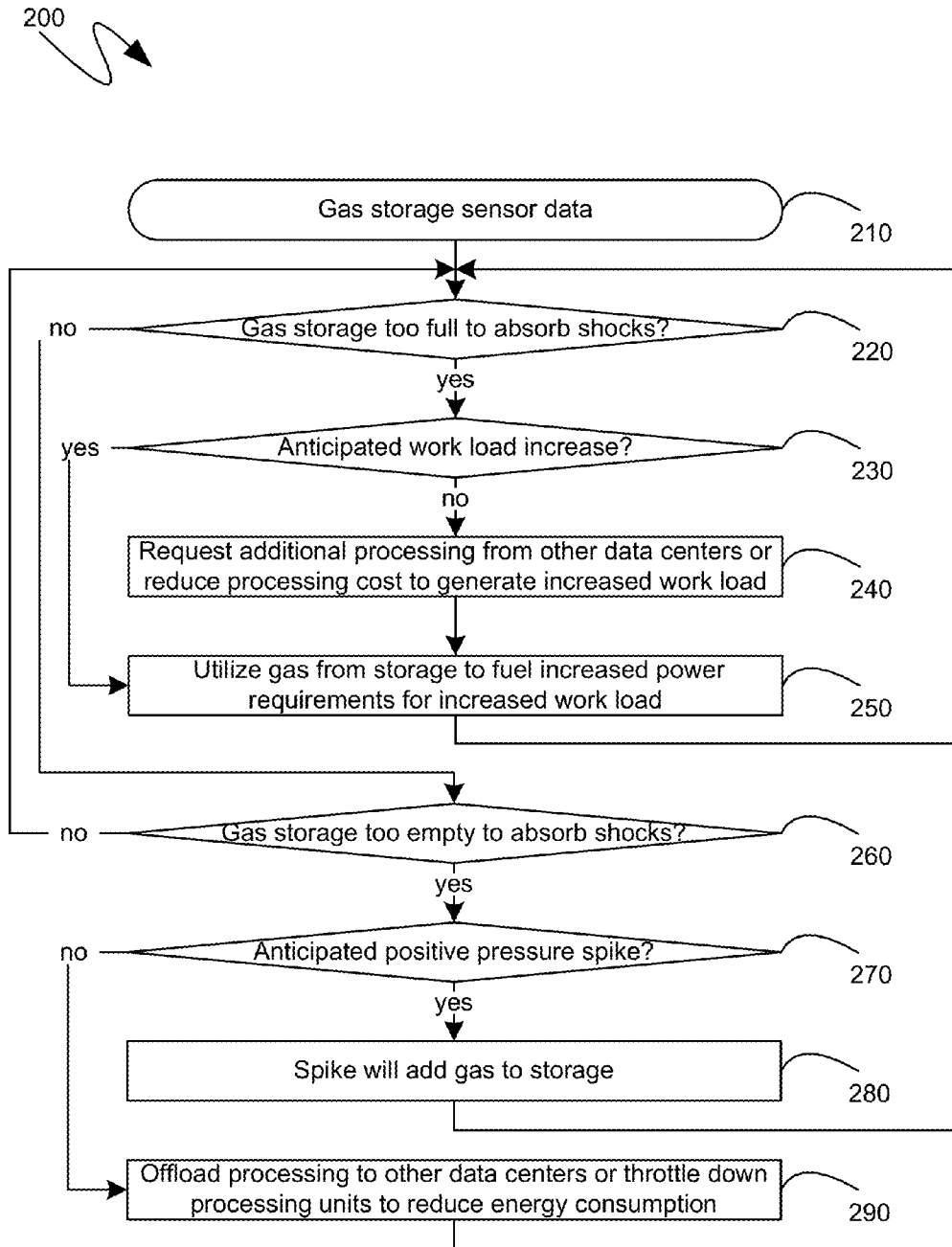


Figure 2

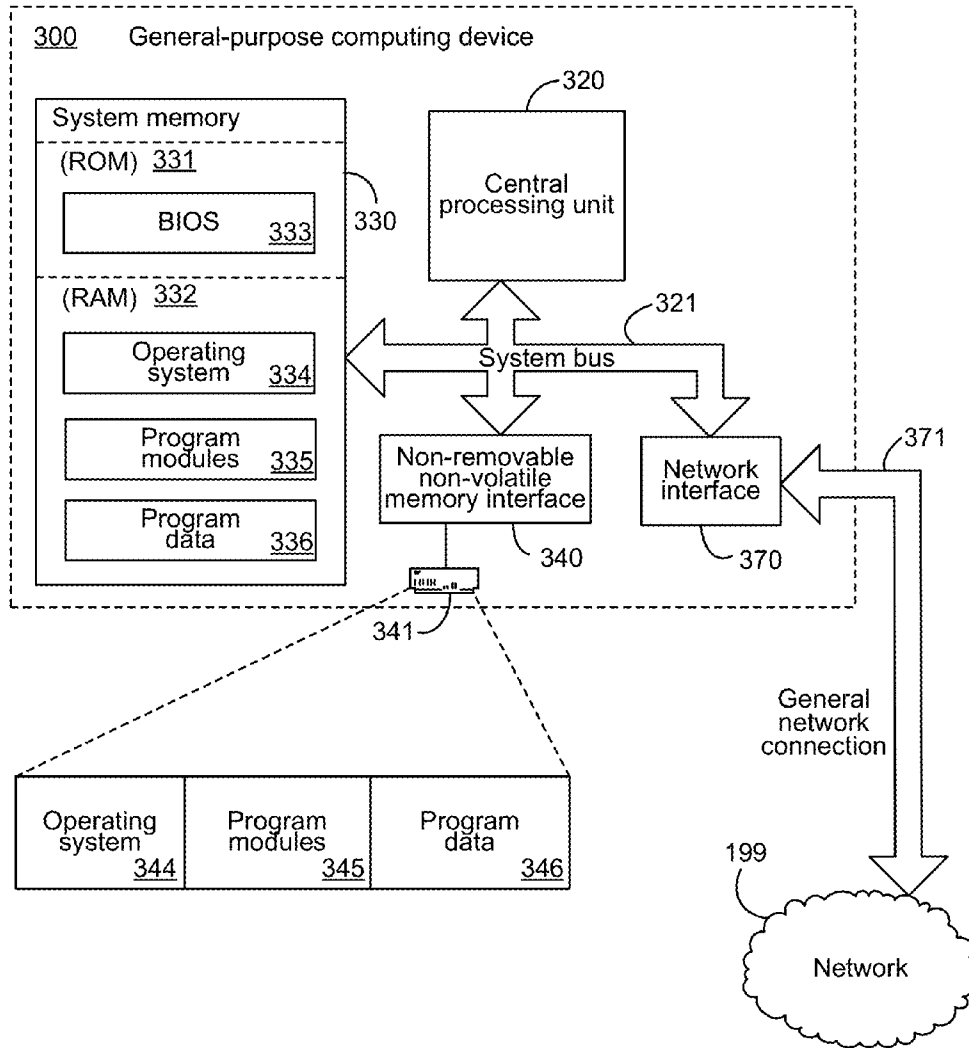


Figure 3

## GAS SUPPLY SHOCK ABSORBER FOR DATACENTER POWER GENERATION

### BACKGROUND

[0001] The throughput of communications between multiple computing devices continues to increase. Modern networking hardware enables physically separate computing devices to communicate with one another orders of magnitude faster than was possible with prior generations of networking hardware. Furthermore, high-speed network communication capabilities are being made available to a greater number of people, both in the locations where people work, and in their homes. As a result, an increasing amount of data and services can be meaningfully provided via such network communications. As a result, the utility of computing devices increasingly lies in their ability to communicate with one another. For example, users of computing devices traditionally used to utilize computing devices for content creation, such as the creation of textual documents or graphical images. Increasingly, however, the most popular utilizations of computing devices are in the browsing of information sourced from other computing devices, the interaction with other users of other computing devices, the utilization of the processing capabilities of other computing devices and the like.

[0002] In particular, it has become more practical to perform digital data processing at a location remote from the location where such data is initially generated, and where the processed data will be consumed. For example, a user can upload a digital photograph to a server and then cause the server to process the digital photograph, changing its colors and applying other visual edits to it. In such an example, the digital processing, such as of the photograph, is being performed by a device that is remote from the user. Indeed, in such an example, if the user was utilizing a battery-operated computing device to interact with the server such as, for example, a laptop or smartphone, the user could be in a location that was not receiving any electrical power at all. Instead, electrical power can have been delivered to the server, which is remote from the user, and the server can have utilized electrical power to process the data provided by the user and then return the processed data to the user.

[0003] To provide such data and processing capabilities, via network communications, from a centralized location, the centralized location typically comprises hundreds or thousands of computing devices, typically mounted in vertically oriented racks. Such a collection of computing devices, as well as the associated hardware necessary to support such computing devices, and the physical structure that houses the computing devices and associated hardware, is traditionally referred to as a “data center”. With the increasing availability of high-speed network communication capabilities, and thus the increasing provision of data and services from centralized locations, as well as the traditional utilization of data centers, such as the provision of advanced computing services and massive amounts of computing processing capability, the size and quantity of datacenters continues to increase.

[0004] However, data centers often consume large quantities of electrical power, especially by the computing devices themselves. Increasingly, the cost of obtaining such electrical power is becoming a primary determinant in the economic success of a data center. Consequently, data centers are being located in areas where the data centers can obtain electrical

electrical power directly, such as areas in which electricity can be purchased from electrical utilities or governmental electrical facilities inexpensively. In other instances, however, data centers are being located in areas where natural resources, from which electrical power can be derived, are abundant and can be obtained inexpensively. For example, natural gas is a byproduct of oil drilling operations and is often considered a waste byproduct since it cannot be economically captured and brought to market. Consequently, in areas where oil drilling operations are being conducted, natural gas is often available for free, or at a minimal cost. As will be recognized by those skilled in the art, natural gas can be utilized to generate electrical power, such as, for example, through a fuel cell or by generating steam to drive a steam powered electrical generator. As another example, municipal landfills and other like waste treatment and processing centers can produce a gas commonly referred to as “biogas” which can, likewise, be utilized to generate electrical power that can, then, be consumed by the computing devices of a data center. Unfortunately, gas that is available at reduced cost cannot always be provided at a well-maintained pressure. Instead, the pressure at which such gases are provided can often vary substantially, including both positive and negative gas pressure spikes where the pressure of the provided gas increases, or decreases, respectively. Not only can such gas pressure spikes damage equipment that utilizes such gas, but they can also be disruptive to the entire gas supply network.

### SUMMARY

[0005] In one embodiment, a gas supply shock absorber can absorb and level out gas pressure spikes by storing gas during positive pressure spikes and then releasing the stored gas during negative pressure spikes. Such a gas supply shock absorber can comprise a gas storage for storing gas during positive pressure spikes, as well as pressure sensing and pressure regulating valves to control the flow of gas into the gas storage, such as during positive pressure spikes and to control the flow of gas out of the gas storage, such as during negative pressure spikes.

[0006] In yet another embodiment, each individual gas supply shock absorber can comprise a backflow preventer such that the gas supply shock absorber only levels out gas pressure spikes for local gas-fed equipment. A sufficient quantity of such individual gas supply shock absorbers on a gas supply network can, in aggregate, act to smooth out the gas pressure on the whole gas supply network, each utilizing their gas storage to increase the ability to consume gas during positive pressure spikes and to reduce demand during negative pressure spikes.

[0007] In a further embodiment, a gas supply shock absorber can be utilized in conjunction with a data center whose electrical power is provided at least in part by devices that consume gas to generate electricity. Such a data center can have varying electrical power demands depending on the workload of the computing devices of the data center. If a sufficient quantity of gas is available in the gas storage of the gas supply shock absorber, an increase in the workload of the computing devices of the data center can be powered by gas from the gas storage, rather than the consumption of additional gas from the gas network.

[0008] In a still further embodiment, if the gas storage of a gas supply shock absorber has a sufficient quantity of gas, the

# Explore Litigation Insights

Docket Alarm provides insights to develop a more informed litigation strategy and the peace of mind of knowing you're on top of things.

## Real-Time Litigation Alerts



Keep your litigation team up-to-date with **real-time alerts** and advanced team management tools built for the enterprise, all while greatly reducing PACER spend.

Our comprehensive service means we can handle Federal, State, and Administrative courts across the country.

## Advanced Docket Research



With over 230 million records, Docket Alarm's cloud-native docket research platform finds what other services can't. Coverage includes Federal, State, plus PTAB, TTAB, ITC and NLRB decisions, all in one place.

Identify arguments that have been successful in the past with full text, pinpoint searching. Link to case law cited within any court document via Fastcase.

## Analytics At Your Fingertips



Learn what happened the last time a particular judge, opposing counsel or company faced cases similar to yours.

Advanced out-of-the-box PTAB and TTAB analytics are always at your fingertips.

## API

Docket Alarm offers a powerful API (application programming interface) to developers that want to integrate case filings into their apps.

## LAW FIRMS

Build custom dashboards for your attorneys and clients with live data direct from the court.

Automate many repetitive legal tasks like conflict checks, document management, and marketing.

## FINANCIAL INSTITUTIONS

Litigation and bankruptcy checks for companies and debtors.

## E-DISCOVERY AND LEGAL VENDORS

Sync your system to PACER to automate legal marketing.