



US 20150368566A1

(19) **United States**

(12) **Patent Application Publication**

Young et al.

(10) **Pub. No.: US 2015/0368566 A1**

(43) **Pub. Date: Dec. 24, 2015**

(54) **SYSTEMS AND METHODS FOR CONTROLLING, MONITORING, AND OPERATING REMOTE OIL AND GAS FIELD EQUIPMENT OVER A DATA NETWORK WITH APPLICATIONS TO RAW NATURAL GAS PROCESSING AND FLARE GAS CAPTURE**

(52) **U.S. Cl.**
CPC *C10G 5/06* (2013.01); *H04W 76/02* (2013.01); *G05B 15/02* (2013.01); *C10L 3/10* (2013.01); *C10L 2290/30* (2013.01); *C10L 2290/46* (2013.01); *C10L 2290/58* (2013.01); *C10L 2290/60* (2013.01)

(71) Applicant: **Pioneer Energy Inc.**, Lakewood, CO (US)

(57) **ABSTRACT**

(72) Inventors: **Andrew Young**, Wheat Ridge, CO (US); **Matthew Lewis**, Lakewood, CO (US); **Gevorg Sargsyan**, Lakewood, CO (US); **Kevin Hotton**, Arvada, CO (US); **Robert M Zubrin**, Golden, CO (US)

(21) Appl. No.: **14/835,673**

(22) Filed: **Aug. 25, 2015**

Related U.S. Application Data

(63) Continuation-in-part of application No. PCT/US2014/042437, filed on Jun. 14, 2014, which is a continuation of application No. 14/086,031, filed on Nov. 21, 2013.

(60) Provisional application No. 61/836,220, filed on Jun. 18, 2013.

Publication Classification

(51) **Int. Cl.**
C10G 5/06 (2006.01)
G05B 15/02 (2006.01)
C10L 3/10 (2006.01)
H04W 76/02 (2006.01)

An intelligent controls system for a field-deployable system for producing dry natural gas (NG) and natural gas liquids (NGLs) from a raw gas stream is disclosed. The control system is used to ensure correct specifications of both dry NG (above a desired minimum methane number) and NGLs (below a desired maximum vapor pressure) from any supplied raw natural gas source by controlling three system parameters: inlet gas flow rate, system operating pressure, and separator-reboiler temperature set point. The input parameters include: heat content of the input gas stream, volume of the input gas stream, desired methane number of the NG, and desired vapor pressure of the NGLs. The controls system allows any piece of remote field equipment for performing complex chemical processing to be monitored, controlled, and operated remotely. A large array of distributed field equipment situated around the world can all be controlled primarily through a single interface provided in a central control center.

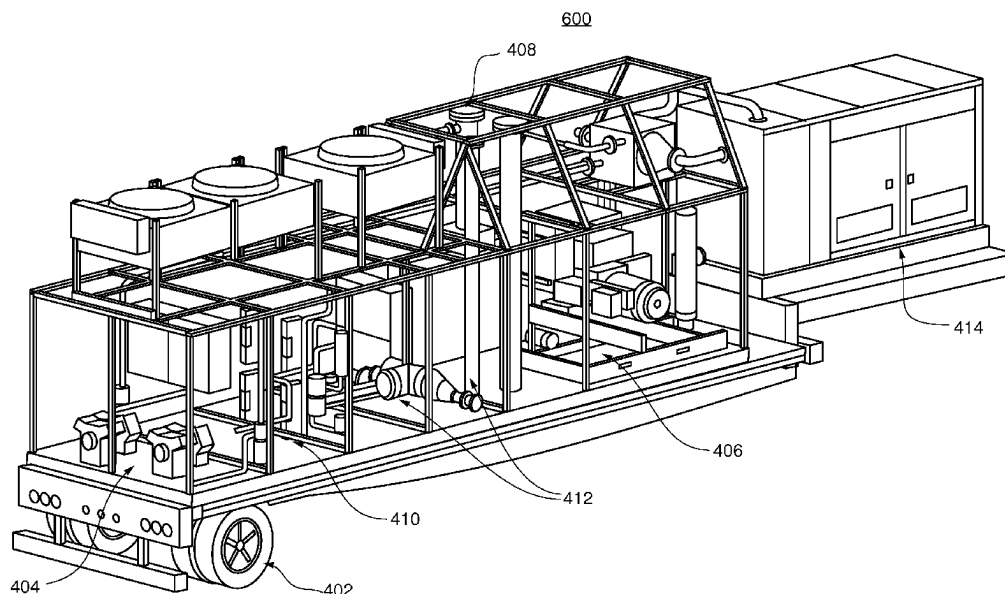


Fig. 1

100

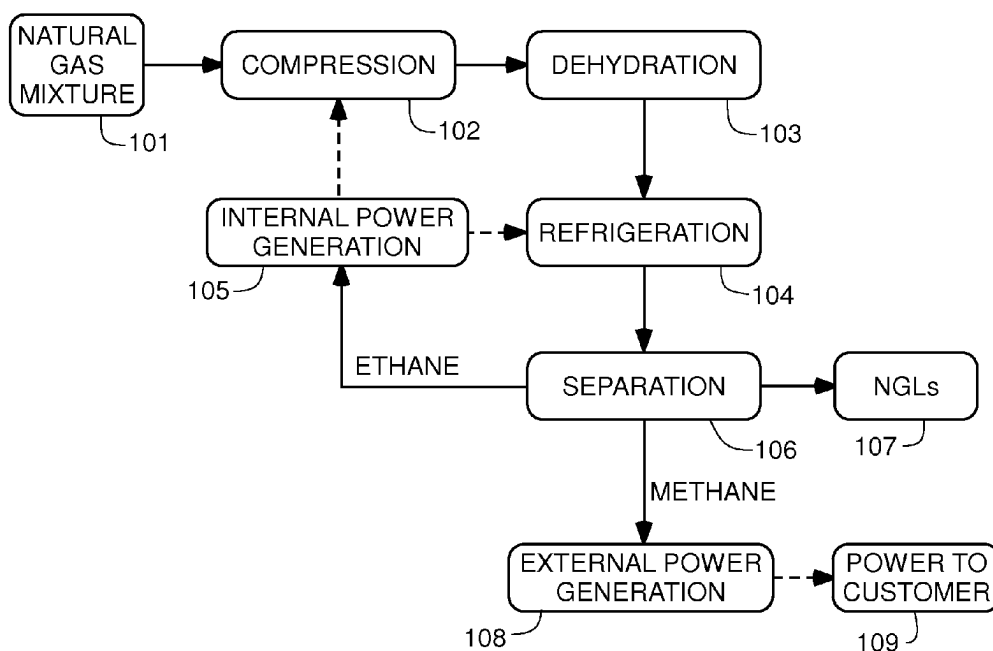


Fig. 2

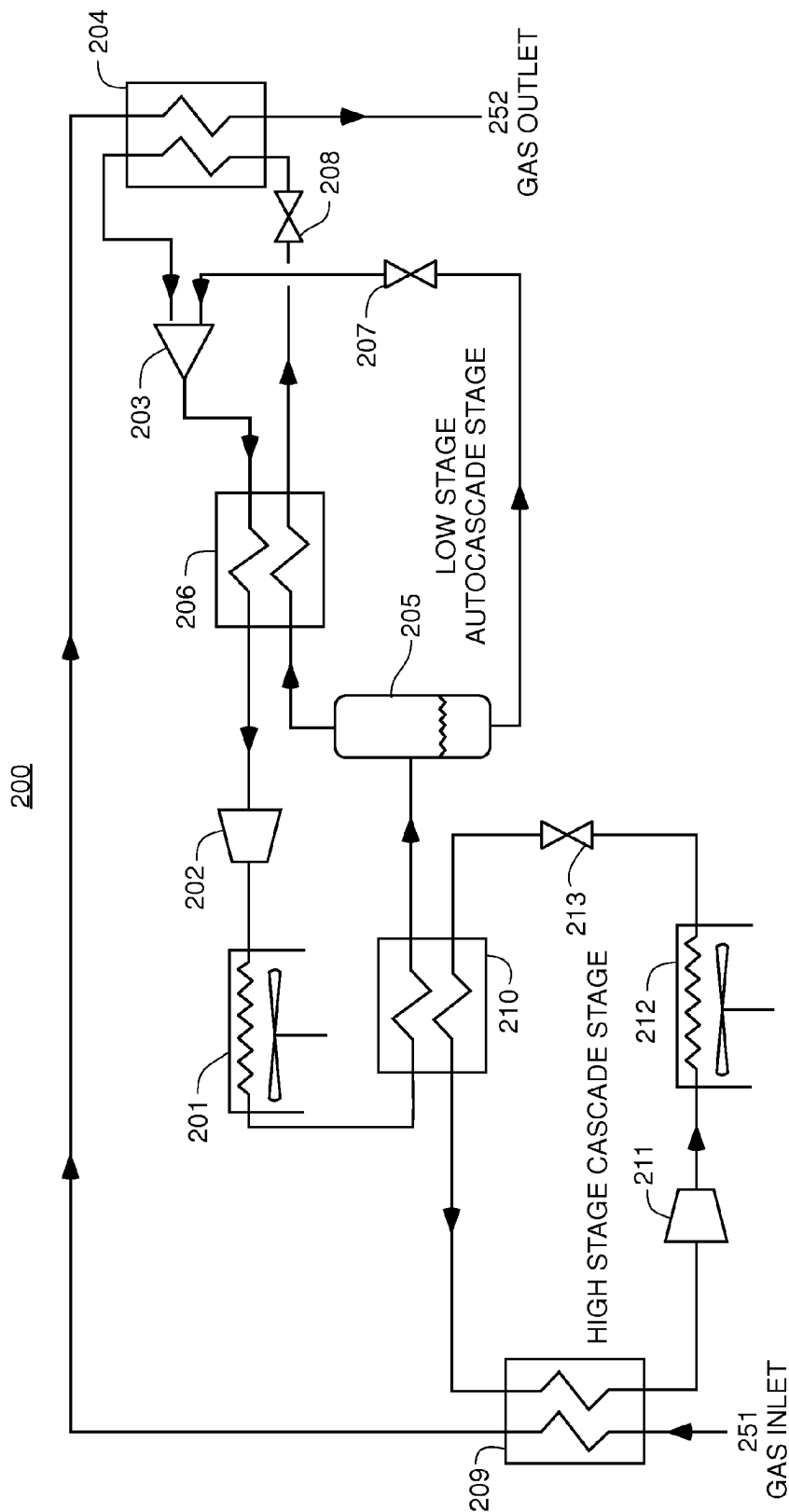
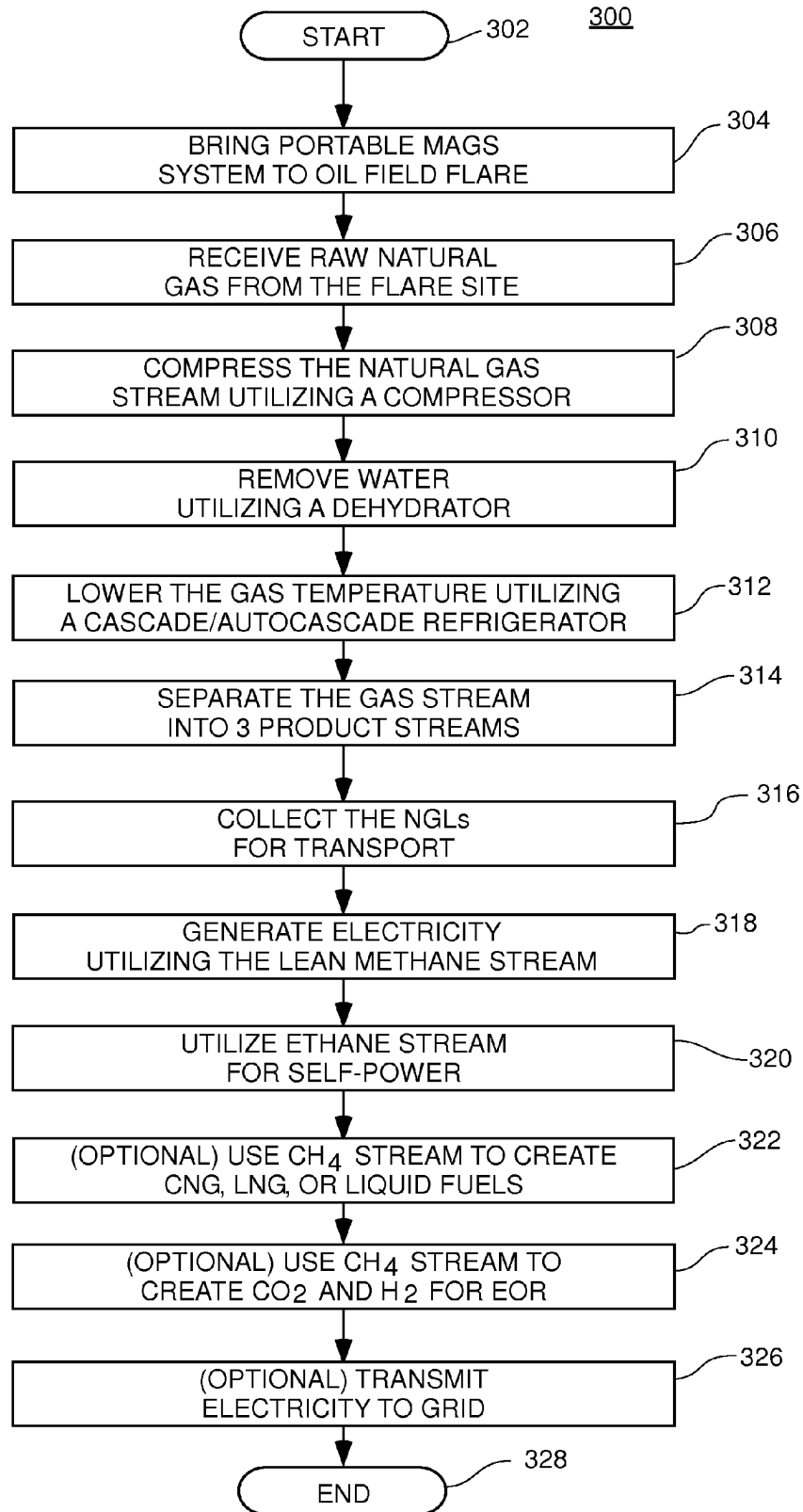
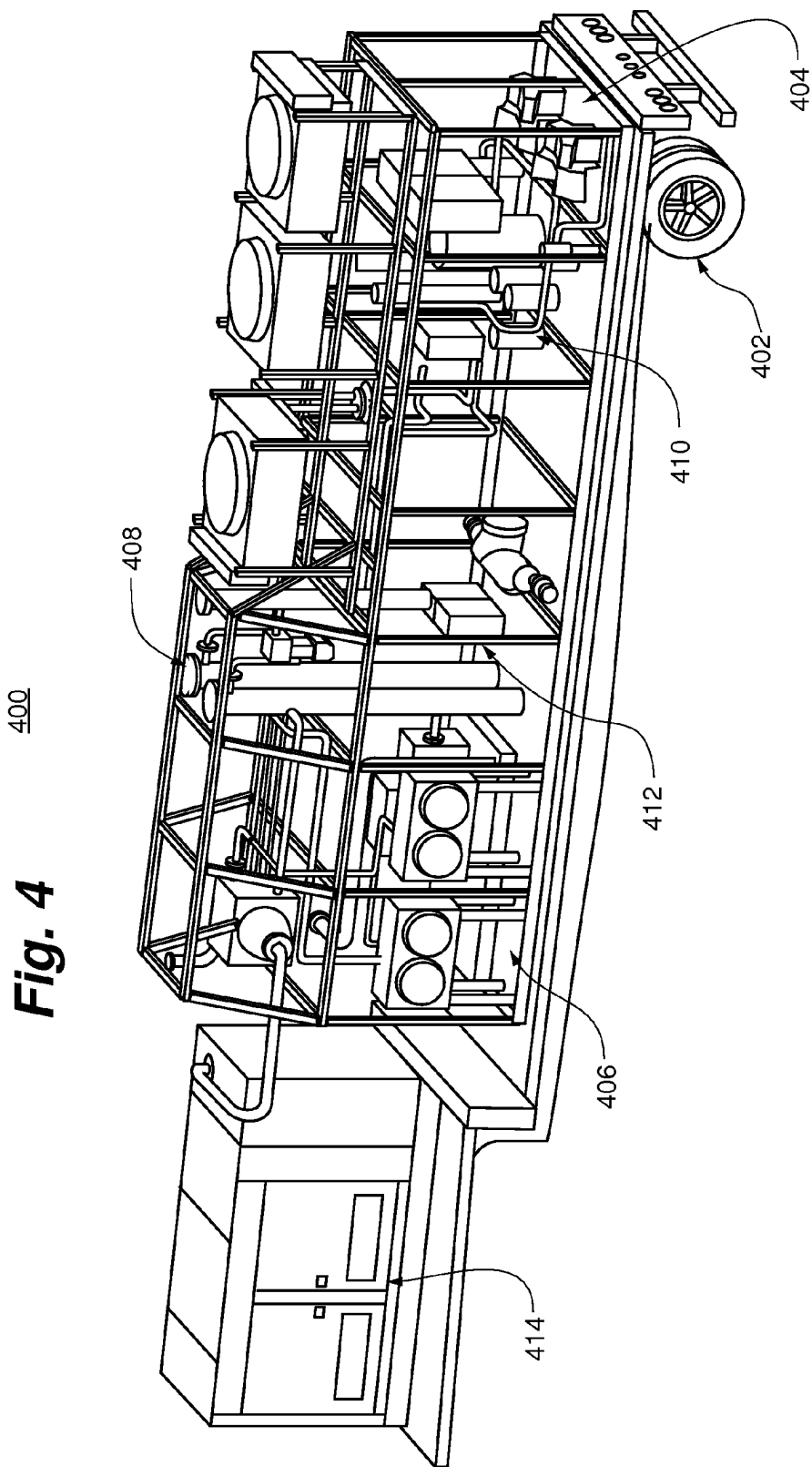


Fig. 3





Explore Litigation Insights

Docket Alarm provides insights to develop a more informed litigation strategy and the peace of mind of knowing you're on top of things.

Real-Time Litigation Alerts



Keep your litigation team up-to-date with **real-time alerts** and advanced team management tools built for the enterprise, all while greatly reducing PACER spend.

Our comprehensive service means we can handle Federal, State, and Administrative courts across the country.

Advanced Docket Research



With over 230 million records, Docket Alarm's cloud-native docket research platform finds what other services can't. Coverage includes Federal, State, plus PTAB, TTAB, ITC and NLRB decisions, all in one place.

Identify arguments that have been successful in the past with full text, pinpoint searching. Link to case law cited within any court document via Fastcase.

Analytics At Your Fingertips



Learn what happened the last time a particular judge, opposing counsel or company faced cases similar to yours.

Advanced out-of-the-box PTAB and TTAB analytics are always at your fingertips.

API

Docket Alarm offers a powerful API (application programming interface) to developers that want to integrate case filings into their apps.

LAW FIRMS

Build custom dashboards for your attorneys and clients with live data direct from the court.

Automate many repetitive legal tasks like conflict checks, document management, and marketing.

FINANCIAL INSTITUTIONS

Litigation and bankruptcy checks for companies and debtors.

E-DISCOVERY AND LEGAL VENDORS

Sync your system to PACER to automate legal marketing.