



US 20180350170A1

(19) **United States**

(12) **Patent Application Publication**
WANG et al.

(10) **Pub. No.: US 2018/0350170 A1**
(43) **Pub. Date: Dec. 6, 2018**

(54) **SYSTEM AND METHOD FOR PREMISE MANAGEMENT**

G06F 1/32 (2006.01)
G06Q 10/02 (2006.01)
G06Q 50/12 (2006.01)

(71) Applicant: **IGLOOHOME PTE. LTD.**, Singapore (SG)

(52) **U.S. Cl.**
CPC *G07C 9/00023* (2013.01); *H04L 9/0866* (2013.01); *G06F 1/3231* (2013.01); *G06F 1/3287* (2013.01); *G07C 2009/00428* (2013.01); *G06Q 50/12* (2013.01); *G07C 9/00103* (2013.01); *G07C 9/00309* (2013.01); *G07C 2009/00769* (2013.01); *G06Q 10/02* (2013.01)

(72) Inventors: **Yue WANG**, Singapore (SG); **Khee Kien HO**, Singapore (SG); **Anthony Wen Jie CHOW**, Singapore (SG); **Sharon May Ling GOH**, Singapore (SG)

(73) Assignee: **IGLOOHOME PTE. LTD.**, Singapore (SG)

(21) Appl. No.: **15/571,826**

(57) **ABSTRACT**

(22) PCT Filed: **May 6, 2016**

(86) PCT No.: **PCT/SG2016/050214**

§ 371 (c)(1),
(2) Date: **Nov. 4, 2017**

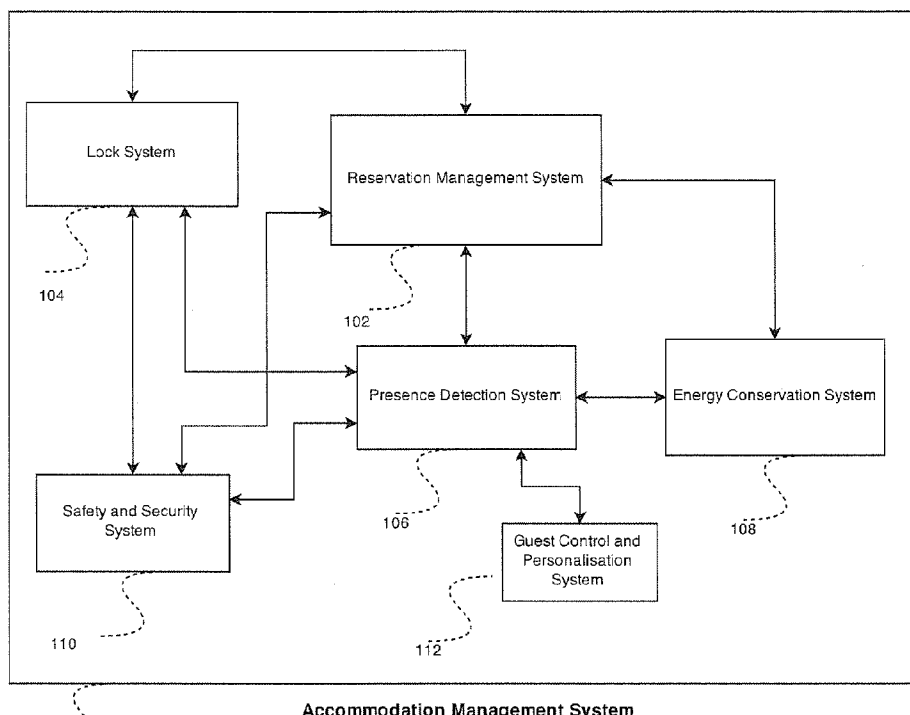
(30) **Foreign Application Priority Data**

May 6, 2015 (SG) 10201503531V

Publication Classification

(51) **Int. Cl.**
G07C 9/00 (2006.01)
H04L 9/08 (2006.01)

Systems and methods for premise management comprising a reservation management module having at least one server, the at least one server arranged in data communication with a user device to receive a request for reservation from the user device to access a premise for a specific duration; and a key generator arranged in data communication with the reservation management module; wherein upon receipt of the request for reservation, the key generator generates a secret key for the user to access the premise for the specific duration, is disclosed. The system may be integrated with other modules including, but not limited to, a lock system and a presence detection system to provide a seamless service to a user.



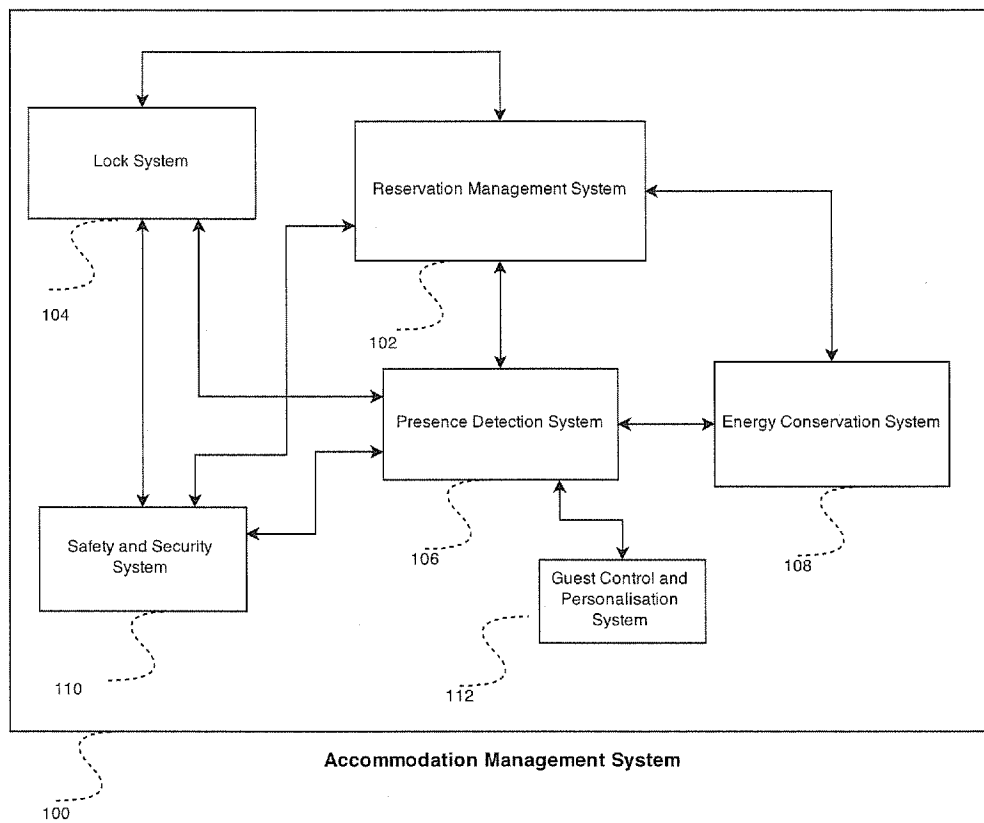
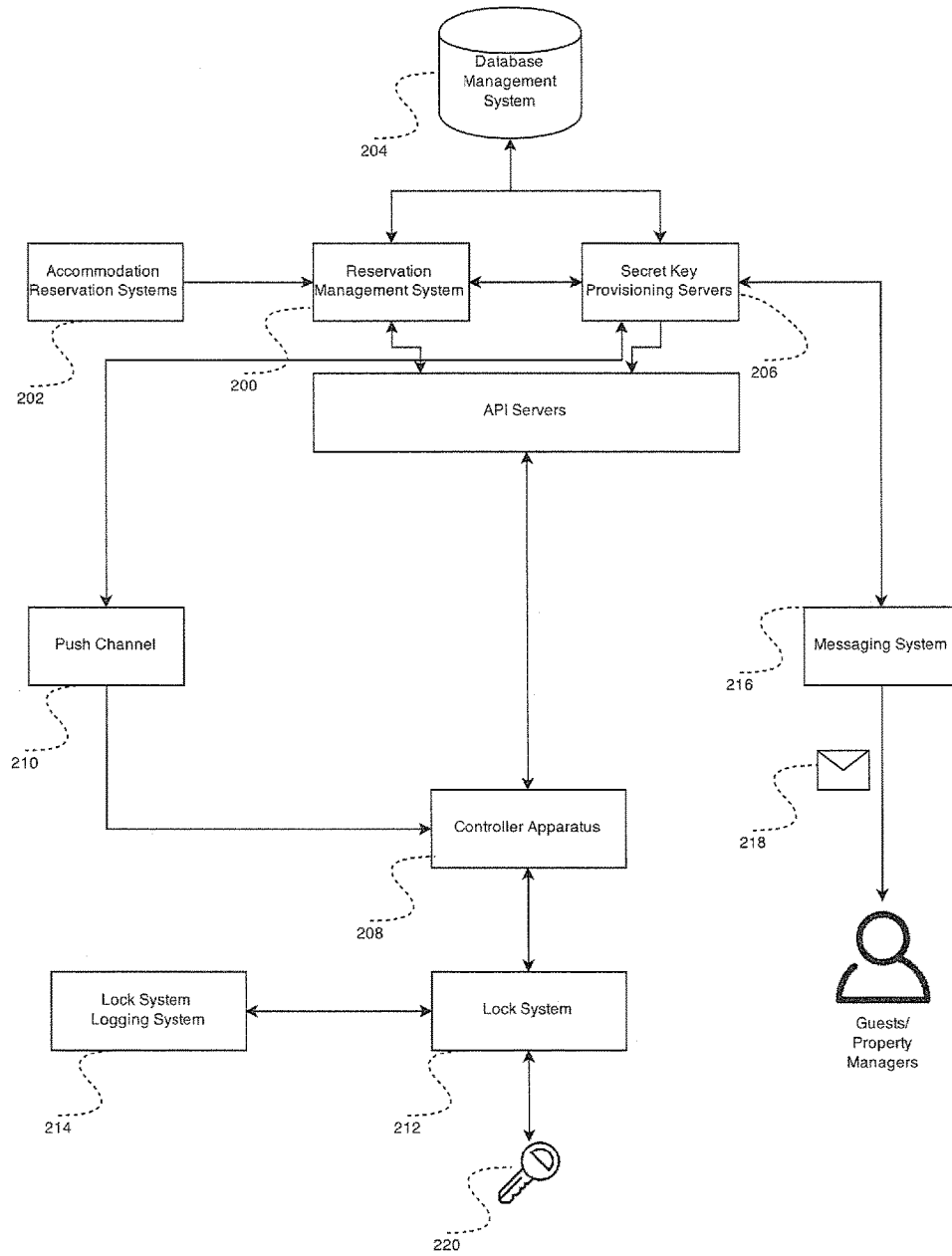
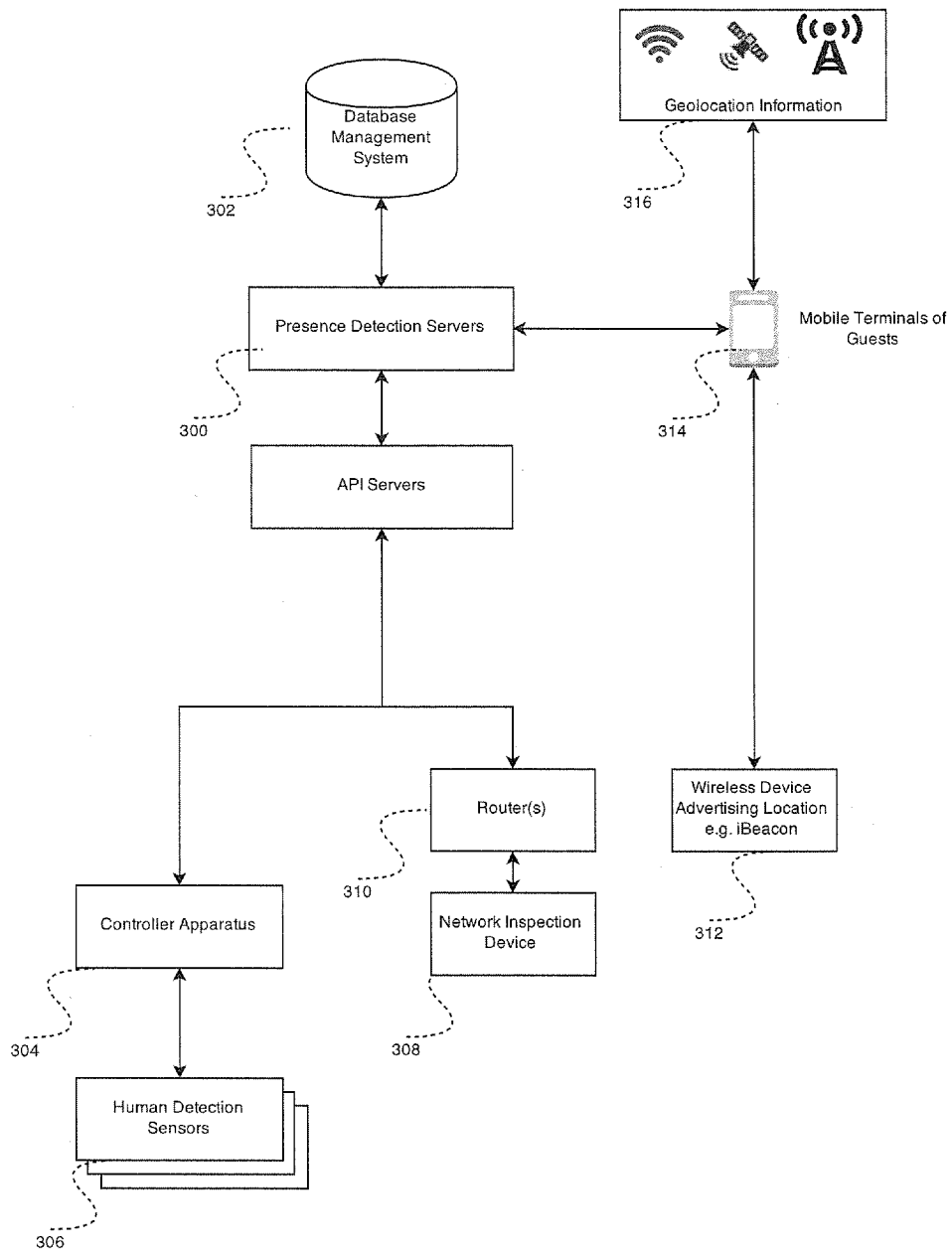


Fig. 1



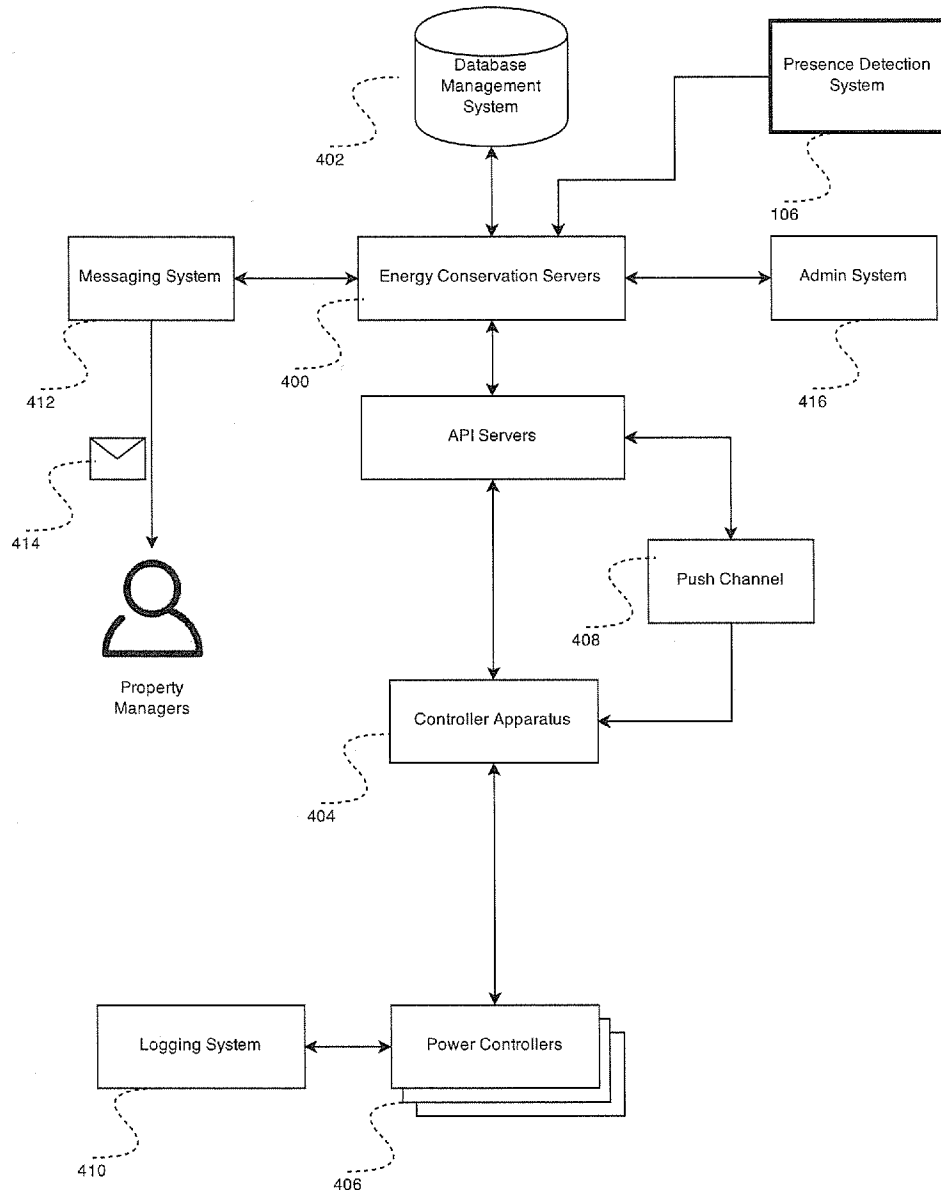
Reservation Management And Lock System

Fig. 2



Presence Detection System

Fig. 3



Energy Conservation System

Fig. 4

Explore Litigation Insights

Docket Alarm provides insights to develop a more informed litigation strategy and the peace of mind of knowing you're on top of things.

Real-Time Litigation Alerts



Keep your litigation team up-to-date with **real-time alerts** and advanced team management tools built for the enterprise, all while greatly reducing PACER spend.

Our comprehensive service means we can handle Federal, State, and Administrative courts across the country.

Advanced Docket Research



With over 230 million records, Docket Alarm's cloud-native docket research platform finds what other services can't. Coverage includes Federal, State, plus PTAB, TTAB, ITC and NLRB decisions, all in one place.

Identify arguments that have been successful in the past with full text, pinpoint searching. Link to case law cited within any court document via Fastcase.

Analytics At Your Fingertips



Learn what happened the last time a particular judge, opposing counsel or company faced cases similar to yours.

Advanced out-of-the-box PTAB and TTAB analytics are always at your fingertips.

API

Docket Alarm offers a powerful API (application programming interface) to developers that want to integrate case filings into their apps.

LAW FIRMS

Build custom dashboards for your attorneys and clients with live data direct from the court.

Automate many repetitive legal tasks like conflict checks, document management, and marketing.

FINANCIAL INSTITUTIONS

Litigation and bankruptcy checks for companies and debtors.

E-DISCOVERY AND LEGAL VENDORS

Sync your system to PACER to automate legal marketing.