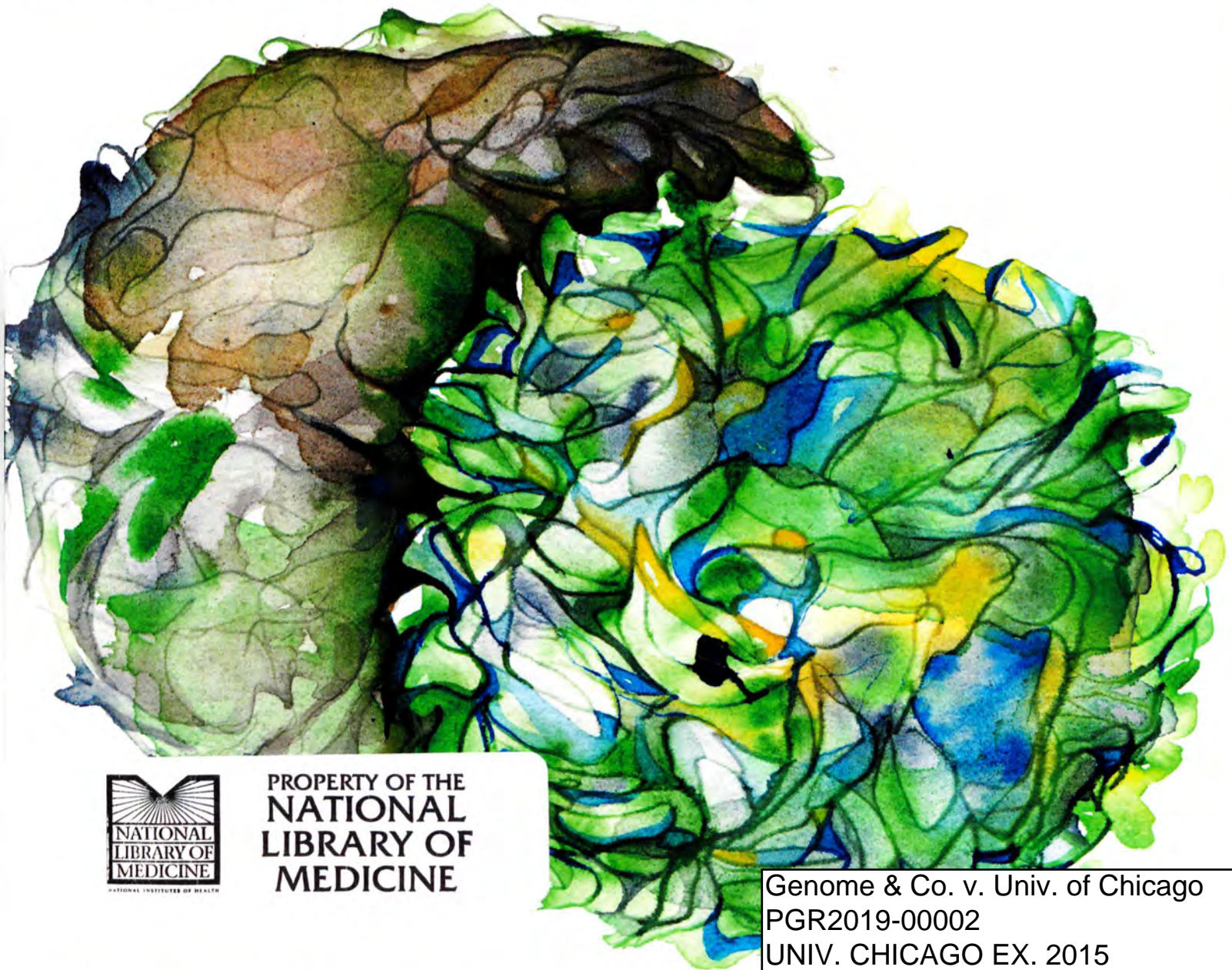


JOURNAL OF EXPERIMENTAL MEDICINE

VOLUME 207 NUMBER 10 SEPTEMBER 27, 2010 www.jem.org



PROPERTY OF THE
NATIONAL
LIBRARY OF
MEDICINE

Genome & Co. v. Univ. of Chicago
PGR2019-00002
UNIV. CHICAGO EX. 2015

PLASTICITY OF NATURAL KILLER CELL LICENSING
Dendritic Cells Required for Th2 Responses
NKX3.1 in Human T Cell Acute Lymphoblastic Leukemia

DOCKET
A L A R M

Find authenticated court documents without watermarks at docketalarm.com.

THE JOURNAL OF EXPERIMENTAL MEDICINE

Executive Editor

Christine Borowski
phone (212) 327-8575
fax (212) 327-8511
email: jem@rockefeller.edu

Senior Editor

Heather L. Van Epps

Scientific Editors

Joel Cohen-Solal
Marlowe S. Tessmer

Editors

Jean-Laurent Casanova
Adolfo Garcia-Sastre
Lewis L. Lamier
William A. Muller
Carl Nathan
Michel Nussenzweig
Anne O'Garra
Alexander Rudensky
Alan Sher
Ralph Steinman
Sasha Tarakhovsky
Andreas Trumpp

Editor Emeritus

Alan N. Houghton

Manuscript Coordinators

Meagan Brooks, Sylvia E. Cuadrado,
and Mary E. Donnelly
phone (212) 327-8575
fax (212) 327-8511
email: jem@rockefeller.edu

Preflight Editor

Rochelle Ritacco

Copy Editors

Brianna Caszatt and Maya Frank-Levine

Production Editor

Shauna O'Garra

News Production Editor

Rita E. Sullivan

Copy Editing Coordinator

Camille Clowery

Production Coordinator

Erinn A. Grady

Production Director

Robert J. O'Donnell

Advisory Editors

Frederick W. Alt
Shizuo Akira
Kari Alitalo
K. Frank Austen
Albert Bendelac
Michael J. Bevan
Christine A. Biron
Christian Bogdan
Hal E. Broxmeyer
Meinrad Busslinger
Arturo Casadevall
Yongwon Choi
Robert L. Coffman
Daniel J. Cua
Myron I. Cybulsky
Glenn Dranoff
Michael Dustin
Douglas T. Fearon
Vincent A. Fischetti
Richard A. Flavell
Stephen J. Galli
Ronald N. Germain
Christopher Goodnow
Siamon Gordon
Or Gozani
Sergio Grinstein
Philippe Gros
David A. Hafler
Kristin A. Hogquist
Christopher A. Hunter
Kayo Inaba
Ralph Isberg
Michael Karin
Gerard Karsenty
Jean-Pierre Kinet
Jay Kolls
Paul Kubers

Vijay K. Kuchroo
Tomohiro Kurosaki
Bart N. Lambrecht
Klaus F. Ley
Yong-Jun Liu
Xiaojing Ma
H.R. MacDonald
Bernard Malissen
James S. Malter
Philippa Marrack
Diane Mathis
Ruslan M. Medzhitov
Ira Mellman
Matthias Merkenschlager
John P. Moore
Sean J. Morrison
Muriel Moser
Christian Münz
Benjamin G. Neel
Michael Neuberger
Victor Nussenzweig
John J. O'Shea
Paul H. Patterson
Fiona Powrie
Lluís Quintana-Murci
Klaus Rajewsky
Gwendalyn J. Randolph
Anjana Rao
Jeffrey Ravetch
Mercedes Rincon
Sergio Romagnani
Nikolaus Romani
Steven Rosen
David L. Sacks
Shimon Sakaguchi
Federica Sallusto
Matthew D. Scharff
Stephen P. Schoenberger

Hans Schreiber
Gerold Schuler
Robert A. Seder
Rafick-P. Sékaly
Charles N. Serhan
Nilabh Shastri
Ethan M. Shevach
Roy L. Silverstein
Jonathan Sprent
Louis M. Staudt
Janet Stavnezer
Andreas Strasser
Toshio Suda
Steven L. Teitelbaum
Thomas J. Templeton
Kevin J. Tracey
Giorgio Trinchieri
Marcel R.M. van den Brink
Ulrich von Andrian
Harald von Boehmer
Amy Wagers
Christopher M. Walker
Raymond M. Welsh
E. John Wherry
Linda S. Wicker
Ian Wilson

Monitoring Editors

Marco Colonna
Jason Cyster
Stephen Hedrick

Consulting

Biostatistics Editors

Glenn Heller
Madhu Mazumdar

THE ROCKEFELLER
UNIVERSITY
PRESS

Copyright to articles published in this journal is held by the authors. Articles are published by The Rockefeller University Press under license from the authors. Conditions for reuse of the articles by third parties are listed at <http://www.jem.org/misc/terms.shtml>

0022-0007 Online ISSN 1540-9538

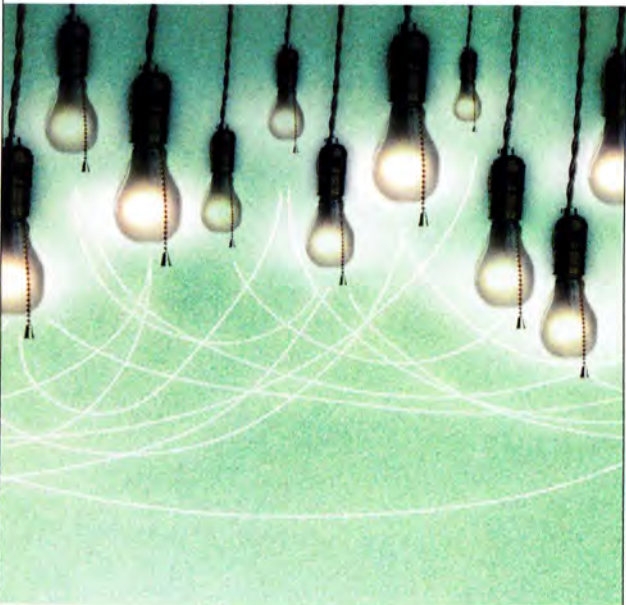


DOCKET
ALARM

Find authenticated court documents without watermarks at docketalarm.com.



HELL IS THE PLACE WHERE NOTHING CONNECTS
— T.S. ELIOT



reliable reference linking, powered by CrossRef

Linking to and from this journal is powered by CrossRef. CrossRef links millions of articles and chapters, from thousands of publications, from hundreds of publishers. So your reference linking works. Permanently.

Take a tour at www.crossref.org.

And make sure all your published work is CrossRef-enabled.



CROSSREF.ORG | THE CITATION LINKING BACKBONE



THE ROCKEFELLER
UNIVERSITY

PRESS

QUALITY AND INTEGRITY

EXECUTIVE DIRECTOR

Mike Rossner

FINANCE DIRECTOR

Raymond T. Fastiggi

ASSISTANTS TO THE FINANCE DIRECTOR

Sarah S. Kraft

Ann Travers

BUSINESS DEVELOPMENT DIRECTOR

Gregory Flynn Malar

CIRCULATION ASSISTANTS

Jason Holtham

Emily Taylor

ADVERTISING SALES DIRECTOR

Lorna Petersen

Phone: 212-327-8880

Fax: 212-327-7944

email: petersl@rockefeller.edu

MARKETING ASSOCIATE

Laraine Karl

PERMISSIONS DIRECTOR

Suzanne Runyan

OFFICE ADMINISTRATOR

JoAnn Greene

The *Journal of Experimental Medicine* (ISSN 0022-1007) is published every four weeks (1 volume, 13 issues) by The Rockefeller University Press, 1114 First Avenue, New York, NY 10065-8325. Periodical postage paid at New York, NY and additional mailing offices.

2010 Subscription Rates:

Institutional Rates:

Online Tier 1: \$1,265 Tier 2: \$1,610 Tier 3: \$2,055

Print+Online Tier 1: \$2,855* Tier 2: \$3,145* Tier 3: \$3,360*

*Plus \$300 for airmail delivery outside the U.S./Canada

Personal Rates:

Individual Print: \$310* Online: \$145 Print+Online: \$455*

*Plus \$265 for airmail delivery outside the U.S./Canada

For more information, please contact the Circulation Department:

Phone: 212-327-8572

Fax: 212-327-7944

email: rupcd@rockefeller.edu

Permission requests:

email: permissions@rockefeller.edu

Postmaster: Send address changes to the *Journal of Experimental Medicine*, Circulation Department, The Rockefeller University Press, 1114 First Avenue, New York, NY 10065-8325.

**DOCKET
ALARM**

Find authenticated court documents without watermarks at docketalarm.com.

Minireviews

- 2045 p53 connects tumorigenesis and reprogramming to pluripotency
Natalia Tapia and Hans R. Schöler
- 2049 Re-educating natural killer cells
Joseph C. Sun

Reviews

- 2053 Type I interferon: friend or foe?
Giorgio Trinchieri

Brief Definitive Reports

- 2065 Mature natural killer cells reset their responsiveness when exposed to an altered MHC environment
Nathalie T. Joncker, Nataliya Shifrin, Frédéric Delebecque, and David H. Raulet
[See minireview on page 2049](#)
- 2073 MHC class I-deficient natural killer cells acquire a licensed phenotype after transfer into an MHC class I-sufficient environment
Julie M. Elliott, Joseph A. Wahle, and Wayne M. Yokoyama
[See minireview on page 2049](#)
- 2081 IL-10 inhibits transcription elongation of the human *TNF* gene in primary macrophages
Tim Smallie, Giuseppe Ricchetti, Nicole J. Horwood, Marc Feldmann, Andrew R. Clark, and Lynn M. Williams
- 2089 CD11c depletion severely disrupts Th2 induction and development in vivo
Alexander T. Phythian-Adams, Peter C. Cook, Rachel J. Lundie, Lucy H. Jones, Katherine A. Smith, Tom A. Barr, Kristin Hochweller, Stephen M. Anderton, Günter J. Hämmerling, Rick M. Maizels, and Andrew S. MacDonald

Articles

- 2097 Inflammatory dendritic cells—not basophils—are necessary and sufficient for induction of Th2 immunity to inhaled house dust mite allergen
Hamida Hammad, Maud Plantinga, Kim Deswarte, Philippe Pouliot, Monique A.M. Willart, Mirjam Kool, Femke Muskens, and Bart N. Lambrecht
- 2113 The Ets-1 transcription factor controls the development and function of natural regulatory T cells
Enguerran Mouly, Karine Chemin, Hai Vu Nguyen, Martine Chopin, Laurent Mesnard, Maria Leite-de-Moraes, Odile Burlen-defranoux, Antonio Bandeira, and Jean-Christophe Bories
- 2127 Mutant p53 facilitates somatic cell reprogramming and augments the malignant potential of reprogrammed cells
Rachel Sarig, Noa Rivlin, Ran Brosh, Chamutal Bornstein, Iris Kamer, Osnat Ezra,

JEM

THE
JOURNAL OF
EXPERIMENTAL
MEDICINE

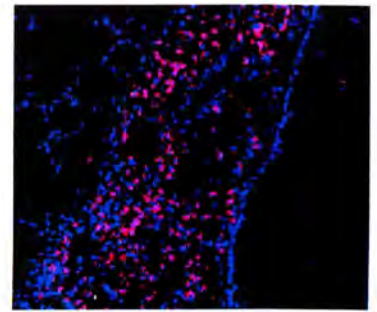
VOLUME 207 NUMBER 10
SEPTEMBER 27, 2010
www.jem.org



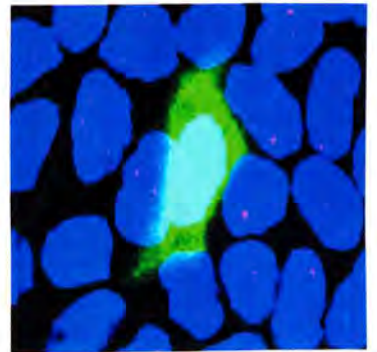
ON THE COVER

Brief Definitive Reports from the teams of Raulet and Yokoyama illustrate the functional plasticity of mature NK cells. Dysfunctional NK cells from MHC class I-deficient mice gain effector function when transferred to MHC-sufficient hosts, and vice versa. Joseph Sun discusses these papers in the context of other recent findings in a Minireview. Watercolor image represents the altered responsive states of NK cells. Artwork by Emilie Clark (emilie@emilieclark.com).
[See page 2049](#)

- 2141 ***NKX3.1* is a direct TAL1 target gene that mediates proliferation of TAL1-expressing human T cell acute lymphoblastic leukemia**
Sophie Kusy, Bastien Gerby, Nicolas Goardon, Nathalie Gault, Federica Ferri, Delphine Gérard, Florence Armstrong, Paola Ballerini, Jean-Michel Cayuela, André Baruchel, Françoise Pflumio, and Paul-Henri Roméo
- 2157 **Conversion of *Helicobacter pylori* CagA from senescence inducer to oncogenic driver through polarity-dependent regulation of p21**
Yasuhiro Saito, Naoko Murata-Kamiya, Toshiya Hirayama, Yusuke Ohba, and Masanori Hatakeyama
- 2175 **Upregulation of Tim-3 and PD-1 expression is associated with tumor antigen-specific CD8⁺ T cell dysfunction in melanoma patients**
Julien Fourcade, Zhaojun Sun, Mourad Benallaoua, Philippe Guillaume, Immanuel F. Luescher, Cindy Sander, John M. Kirkwood, Vijay Kuchroo, and Hassane M. Zarour
- 2187 **Targeting Tim-3 and PD-1 pathways to reverse T cell exhaustion and restore anti-tumor immunity**
Kaori Sakuishi, Lionel Apetoh, Jenna M. Sullivan, Bruce R. Blazar, Vijay K. Kuchroo, and Ana C. Anderson
- 2195 **IAP inhibitors enhance co-stimulation to promote tumor immunity**
Michael Dougan, Stephanie Dougan, Joanna Slisz, Brant Firestone, Matthew Vanneman, Dobrin Draganov, Girija Goyal, Weibo Li, Donna Neuberg, Richard Blumberg, Nir Hacohen, Dale Porter, Leigh Zawel, and Glenn Dranoff
- 2207 **Lnk-dependent axis of SCF-cKit signal for osteogenesis in bone fracture healing**
Tomoyuki Matsumoto, Masaaki Ii, Hiromi Nishimura, Taro Shoji, Yutaka Mifune, Atsuhiko Kawamoto, Ryosuke Kuroda, Tomoaki Fukui, Yohei Kawakami, Tomoya Kuroda, Sang Mo Kwon, Hiroto Iwasaki, Miki Horii, Ayumi Yokoyama, Akira Oyamada, Sang Yang Lee, Shinya Hayashi, Masahiro Kurosaka, Satoshi Takaki, and Takayuki Asahara
- 2225 **Somatic hypermutation as a generator of antinuclear antibodies in a murine model of systemic autoimmunity**
Wenzhong Guo, Diana Smith, Katja Aviszus, Thiago Detanico, Ryan A. Heiser, and Lawrence J. Wysocki
- 2239 **$\gamma\delta$ T cells protect against lung fibrosis via IL-22**
Philip L. Simonian, Fabian Wehrmann, Christina L. Roark, Willi K. Born, Rebecca L. O'Brien, and Andrew P. Fontenot
- 2255 **Stimulation of lymphangiogenesis via VEGFR-3 inhibits chronic skin inflammation**
Reto Huggenberger, Stefan Ullmann, Steven T. Proulx, Bronislaw Pytowski, Kari Alitalo, and Michael Detmar



FcεRI⁺ DCs initiate Th2 responses to house dust mite allergen.
See page 2049



Polarity-dependent oncogenesis of *H. pylori* CagA.
See page 2157

Explore Litigation Insights

Docket Alarm provides insights to develop a more informed litigation strategy and the peace of mind of knowing you're on top of things.

Real-Time Litigation Alerts



Keep your litigation team up-to-date with **real-time alerts** and advanced team management tools built for the enterprise, all while greatly reducing PACER spend.

Our comprehensive service means we can handle Federal, State, and Administrative courts across the country.

Advanced Docket Research



With over 230 million records, Docket Alarm's cloud-native docket research platform finds what other services can't. Coverage includes Federal, State, plus PTAB, TTAB, ITC and NLRB decisions, all in one place.

Identify arguments that have been successful in the past with full text, pinpoint searching. Link to case law cited within any court document via Fastcase.

Analytics At Your Fingertips



Learn what happened the last time a particular judge, opposing counsel or company faced cases similar to yours.

Advanced out-of-the-box PTAB and TTAB analytics are always at your fingertips.

API

Docket Alarm offers a powerful API (application programming interface) to developers that want to integrate case filings into their apps.

LAW FIRMS

Build custom dashboards for your attorneys and clients with live data direct from the court.

Automate many repetitive legal tasks like conflict checks, document management, and marketing.

FINANCIAL INSTITUTIONS

Litigation and bankruptcy checks for companies and debtors.

E-DISCOVERY AND LEGAL VENDORS

Sync your system to PACER to automate legal marketing.