



US006701251B2

(12) **United States Patent**
Stefan et al.

(10) **Patent No.:** **US 6,701,251 B2**
(45) **Date of Patent:** **Mar. 2, 2004**

(54) **METHOD AND SYSTEM FOR PROVIDING MULTIPLE BEGINNING MANEUVERS FOR NAVIGATION OF A VEHICLE**

(75) Inventors: **Jeffrey M. Stefan**, Clawson, MI (US);
Linda G. Means, Macomb Township, MI (US);
Gregory B. Stewart, Livonia, MI (US)

(73) Assignee: **General Motors Corporation**, Detroit, MI (US)

(*) Notice: Subject to any disclaimer, the term of this patent is extended or adjusted under 35 U.S.C. 154(b) by 0 days.

(21) Appl. No.: **09/837,409**

(22) Filed: **Apr. 18, 2001**

(65) **Prior Publication Data**

US 2002/0156573 A1 Oct. 24, 2002

(51) **Int. Cl.**⁷ **G01C 21/30**; G08G 1/123

(52) **U.S. Cl.** **701/211**; 701/201; 701/209; 340/989; 340/992; 340/995.19; 340/995.27

(58) **Field of Search** 701/207, 208, 701/209, 210, 211, 200, 201; 340/988, 990, 995, 989, 991, 992, 996, 995.1, 995.19, 995.2, 995.22, 995.27

(56) **References Cited**

U.S. PATENT DOCUMENTS

5,394,332 A * 2/1995 Kuwahara et al. 340/988
5,543,789 A 8/1996 Behr et al. 340/995
5,608,635 A * 3/1997 Tamai 340/990
5,774,071 A * 6/1998 Konishi et al. 340/988

5,877,708 A * 3/1999 Hijikata 340/995
5,878,368 A * 3/1999 DeGraaf 701/209
5,926,118 A * 7/1999 Hayashida et al. 340/995
5,991,688 A * 11/1999 Fukushima et al. 701/209
6,014,607 A * 1/2000 Yagyu et al. 701/202
6,034,626 A * 3/2000 Maekawa et al. 340/995
6,119,066 A * 9/2000 Sugiura et al. 701/201
6,134,501 A * 10/2000 Oumi 701/209
6,172,641 B1 * 1/2001 Millington 340/996
6,199,013 B1 * 3/2001 O'Shea 340/988
6,266,613 B1 * 7/2001 Nimura et al. 340/990
6,278,942 B1 * 8/2001 McDonough 701/210
6,298,305 B1 * 10/2001 Kadaba et al. 701/200
6,324,472 B1 * 11/2001 O'Shea 340/988
6,427,119 B1 7/2002 Stefan et al. 701/209
6,487,496 B2 * 11/2002 Katayama et al. 701/209
2002/0152024 A1 * 10/2002 Stefan 701/209

* cited by examiner

Primary Examiner—Jacques H. Louis-Jacques

(74) *Attorney, Agent, or Firm*—Anthony Luke Simon

(57) **ABSTRACT**

A method of generating navigation instructions for a vehicle is provided. A destination of the vehicle is received at a route generation application. A maneuver list comprising a plurality of navigation instructions is calculated based on a current location of the vehicle and the destination. A distance threshold is determined based on the current location of the vehicle and the destination. The navigation instructions located within the distance threshold are determined and transmitted from the route generation application to the vehicle. The navigation instructions located within the distance threshold are executed at the vehicle. Systems and programs for using the method are also provided.

22 Claims, 5 Drawing Sheets

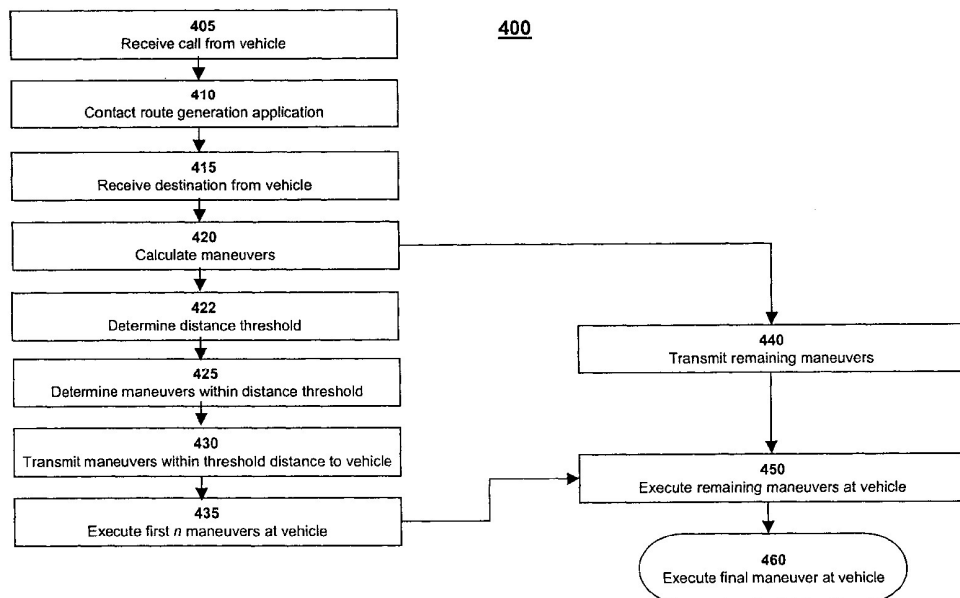


FIG. 1

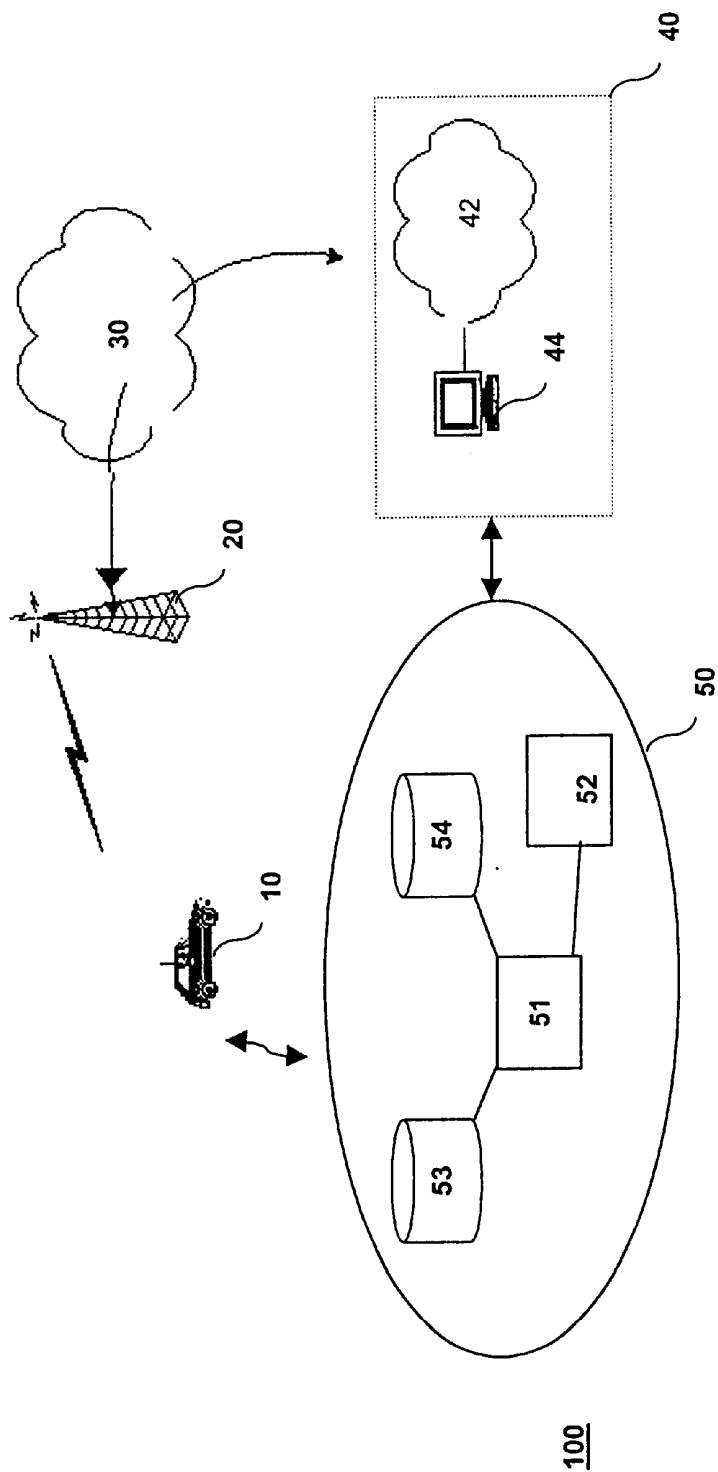


FIG. 2

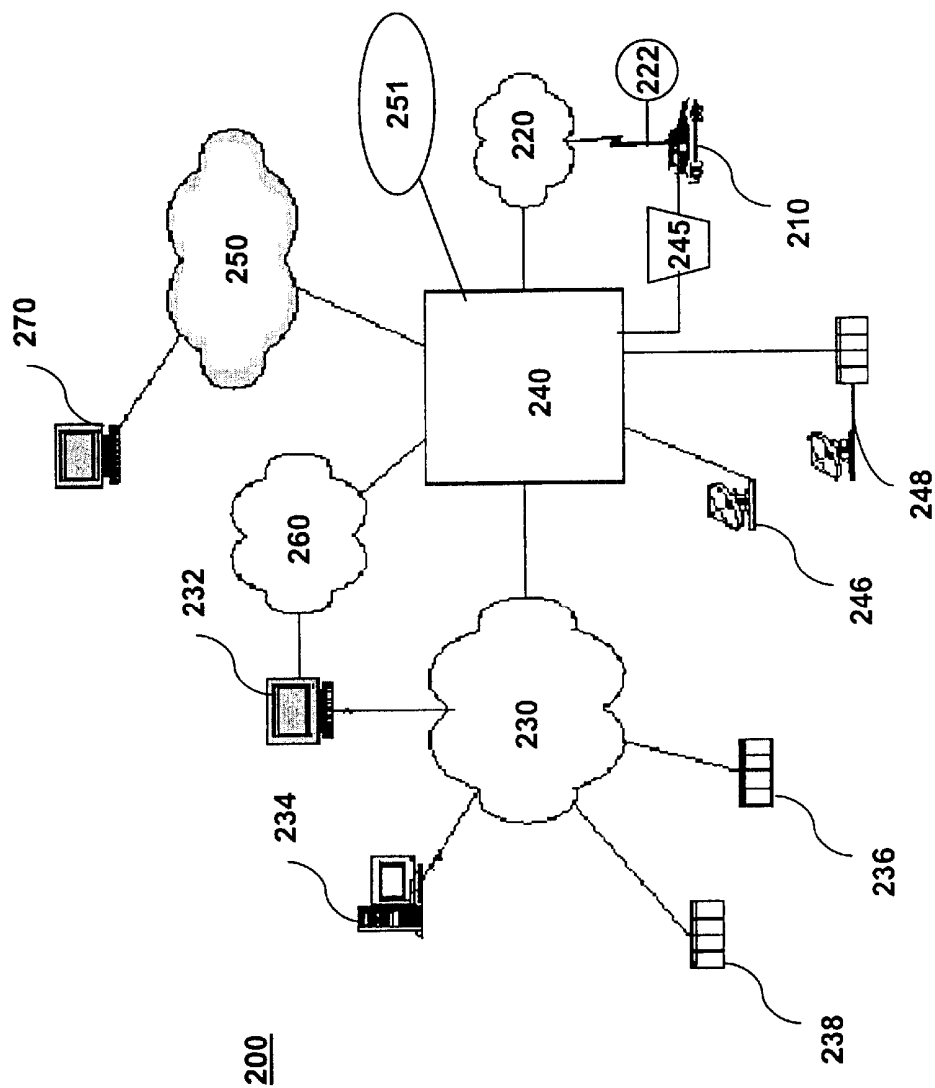


FIG. 3

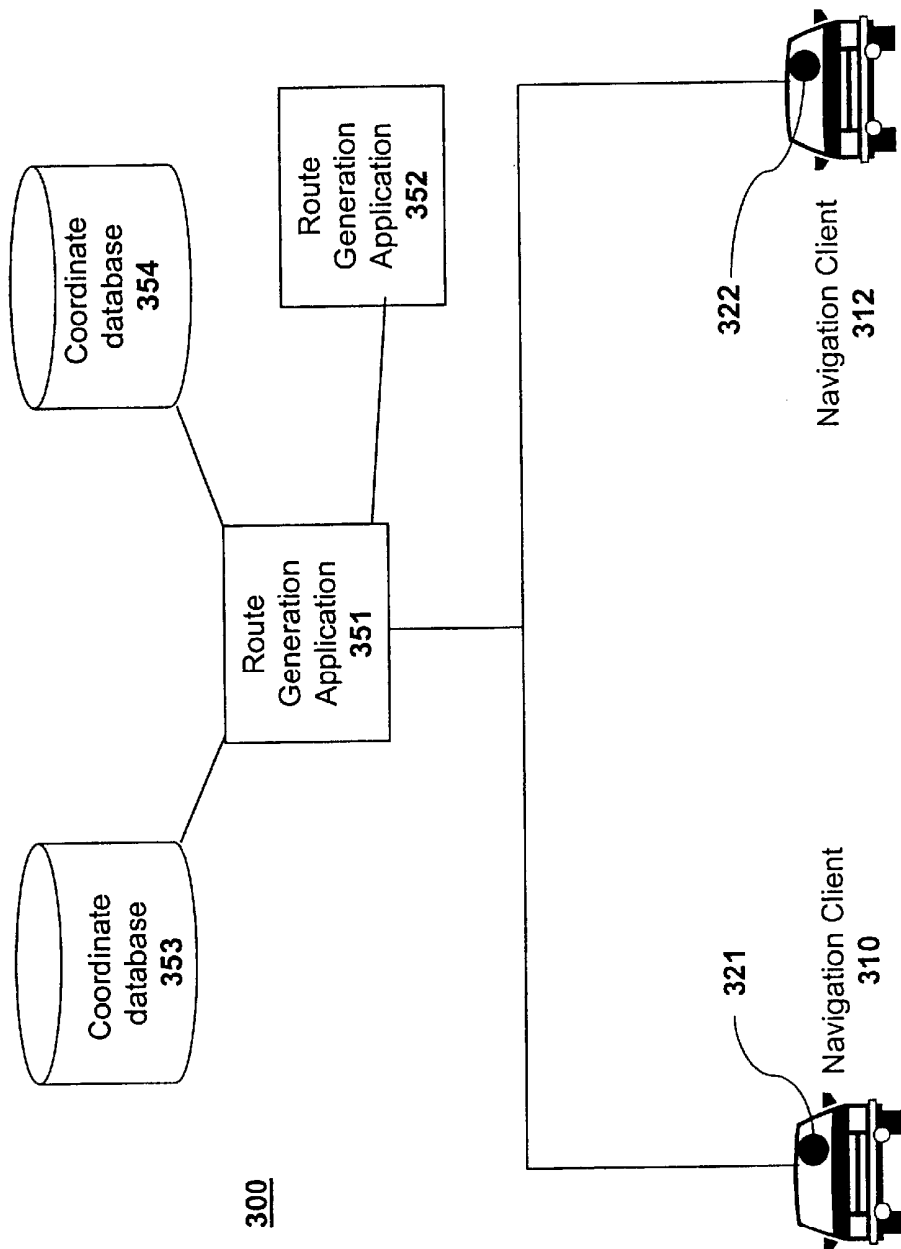
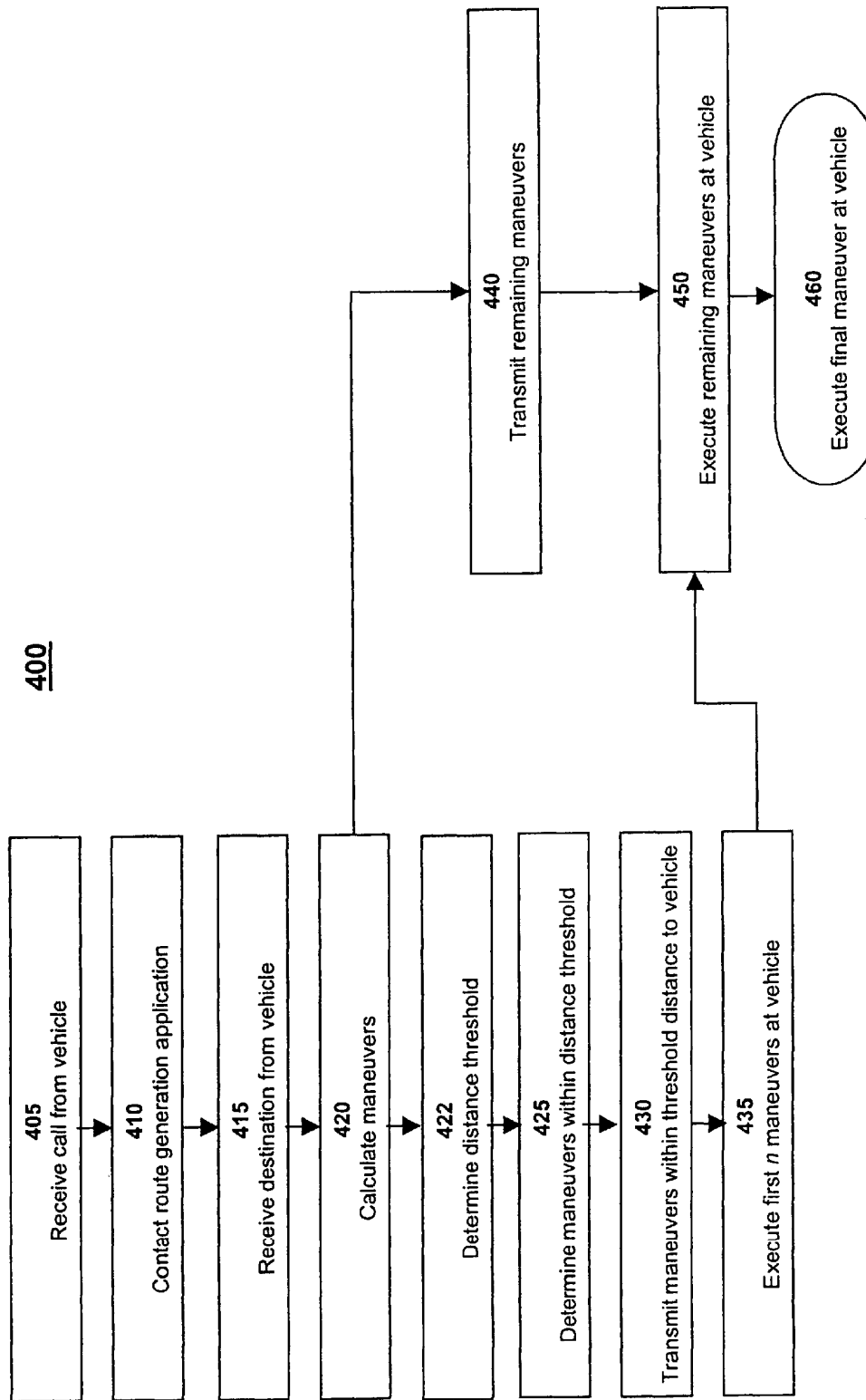


FIG. 4



Explore Litigation Insights

Docket Alarm provides insights to develop a more informed litigation strategy and the peace of mind of knowing you're on top of things.

Real-Time Litigation Alerts



Keep your litigation team up-to-date with **real-time alerts** and advanced team management tools built for the enterprise, all while greatly reducing PACER spend.

Our comprehensive service means we can handle Federal, State, and Administrative courts across the country.

Advanced Docket Research



With over 230 million records, Docket Alarm's cloud-native docket research platform finds what other services can't. Coverage includes Federal, State, plus PTAB, TTAB, ITC and NLRB decisions, all in one place.

Identify arguments that have been successful in the past with full text, pinpoint searching. Link to case law cited within any court document via Fastcase.

Analytics At Your Fingertips



Learn what happened the last time a particular judge, opposing counsel or company faced cases similar to yours.

Advanced out-of-the-box PTAB and TTAB analytics are always at your fingertips.

API

Docket Alarm offers a powerful API (application programming interface) to developers that want to integrate case filings into their apps.

LAW FIRMS

Build custom dashboards for your attorneys and clients with live data direct from the court.

Automate many repetitive legal tasks like conflict checks, document management, and marketing.

FINANCIAL INSTITUTIONS

Litigation and bankruptcy checks for companies and debtors.

E-DISCOVERY AND LEGAL VENDORS

Sync your system to PACER to automate legal marketing.