



US005839088A

**United States Patent** [19]  
**Hancock et al.**

[11] **Patent Number:** **5,839,088**  
 [45] **Date of Patent:** **Nov. 17, 1998**

[54] **GEOGRAPHIC LOCATION REFERENCING SYSTEM AND METHOD**

[75] Inventors: **S. Lee Hancock**, Newport Beach, Calif.; **Peter H. Dana**, Georgetown, Tex.

[73] Assignee: **GO2 Software, Inc.**, Newport Beach, Calif.

[21] Appl. No.: **701,586**

[22] Filed: **Aug. 22, 1996**

[51] **Int. Cl.<sup>6</sup>** ..... **G01C 21/20**; G01S 5/02

[52] **U.S. Cl.** ..... **701/213**; 701/211; 701/201; 342/457

[58] **Field of Search** ..... 701/213, 201, 701/211, 300; 342/357, 457; 340/988

[56] **References Cited**

**U.S. PATENT DOCUMENTS**

4,677,561	6/1987	Akama et al.	364/449
4,974,170	11/1990	Bouve et al.	364/518
5,289,195	2/1994	Inoue	342/457
5,296,861	3/1994	Knight	342/357
5,311,434	5/1994	Tamai	364/449

5,323,322	6/1994	Mueller et al.	364/449
5,345,244	9/1994	Gildea et al.	342/357
5,355,140	10/1994	Slavin et al.	342/386
5,359,332	10/1994	Allison et al.	342/357
5,396,254	3/1995	Toshiyuki	342/357
5,406,491	4/1995	Lima	364/449
5,418,538	5/1995	Lau	342/357
5,422,814	6/1995	Sprague et al.	364/449
5,424,951	6/1995	Nobe et al.	364/443
5,436,632	7/1995	Sheynblat	342/357
5,450,344	9/1995	Woo et al.	364/449
5,452,217	9/1995	Kishi et al.	364/449
5,471,392	11/1995	Yamashita	364/443
5,477,458	12/1995	Loomis	364/449
5,596,500	1/1997	Sprague et al.	701/213

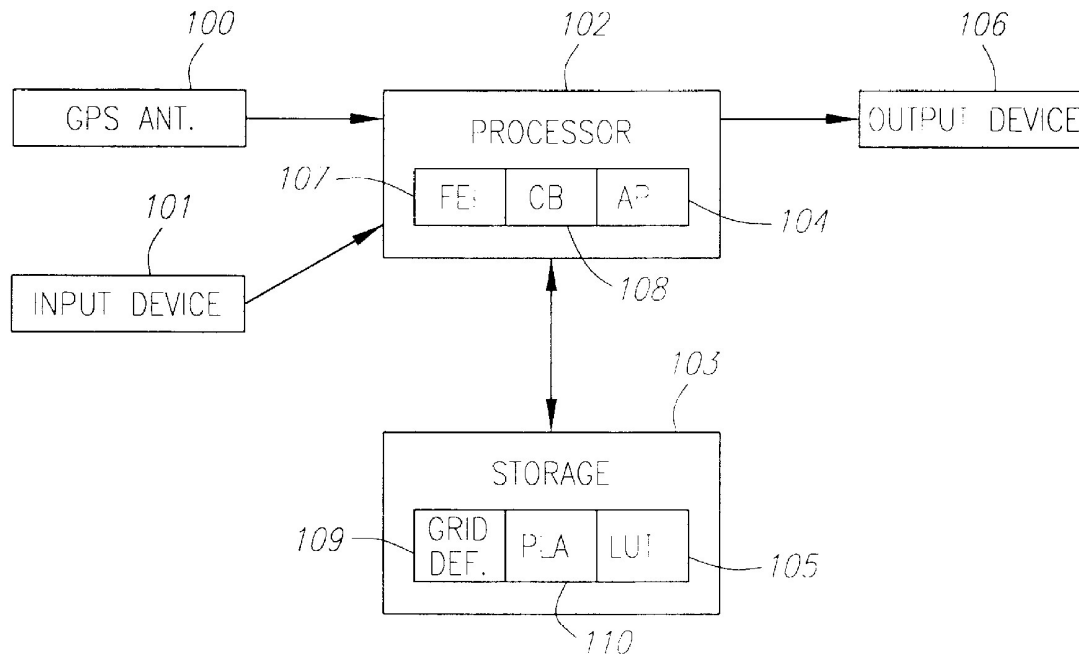
*Primary Examiner*—Michael Zanelli

*Attorney, Agent, or Firm*—Lyon & Lyon LLP

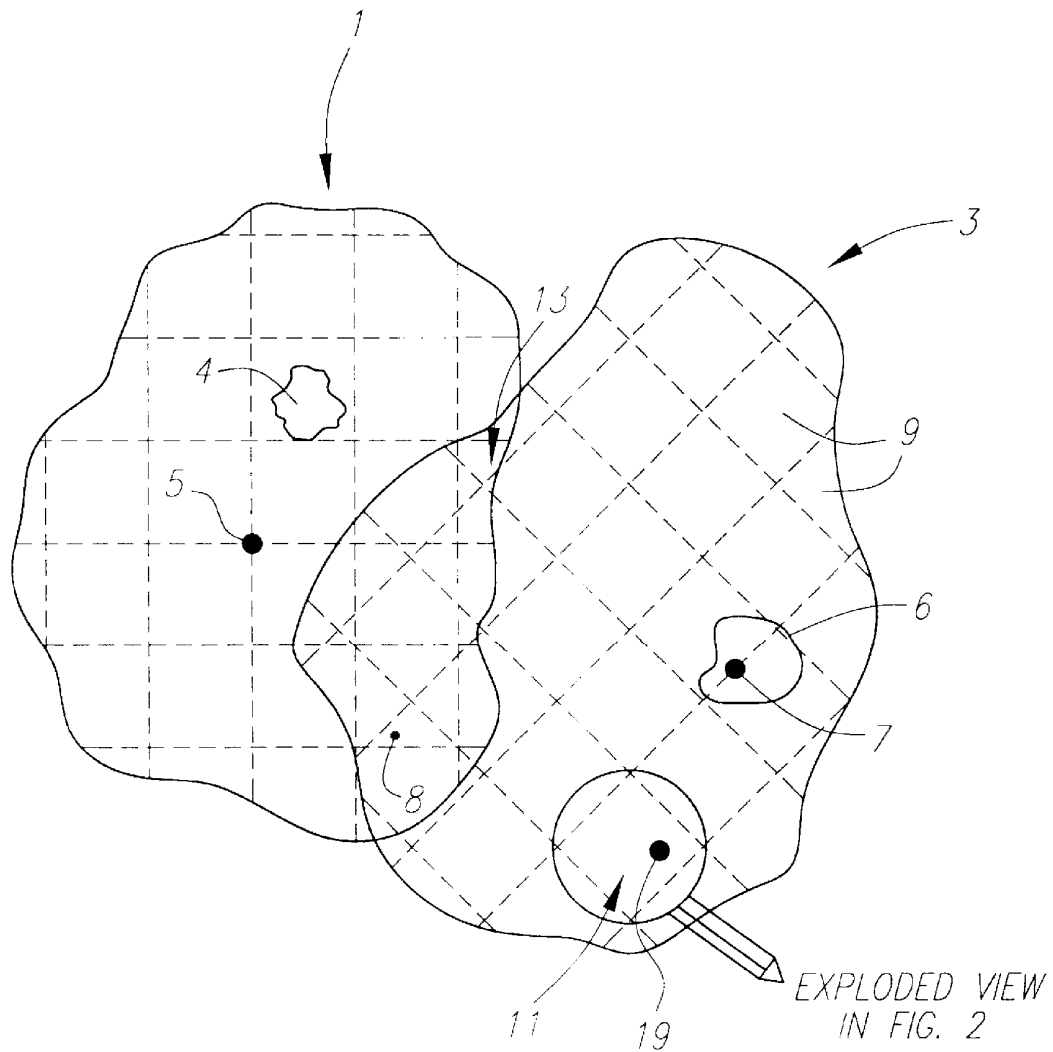
[57] **ABSTRACT**

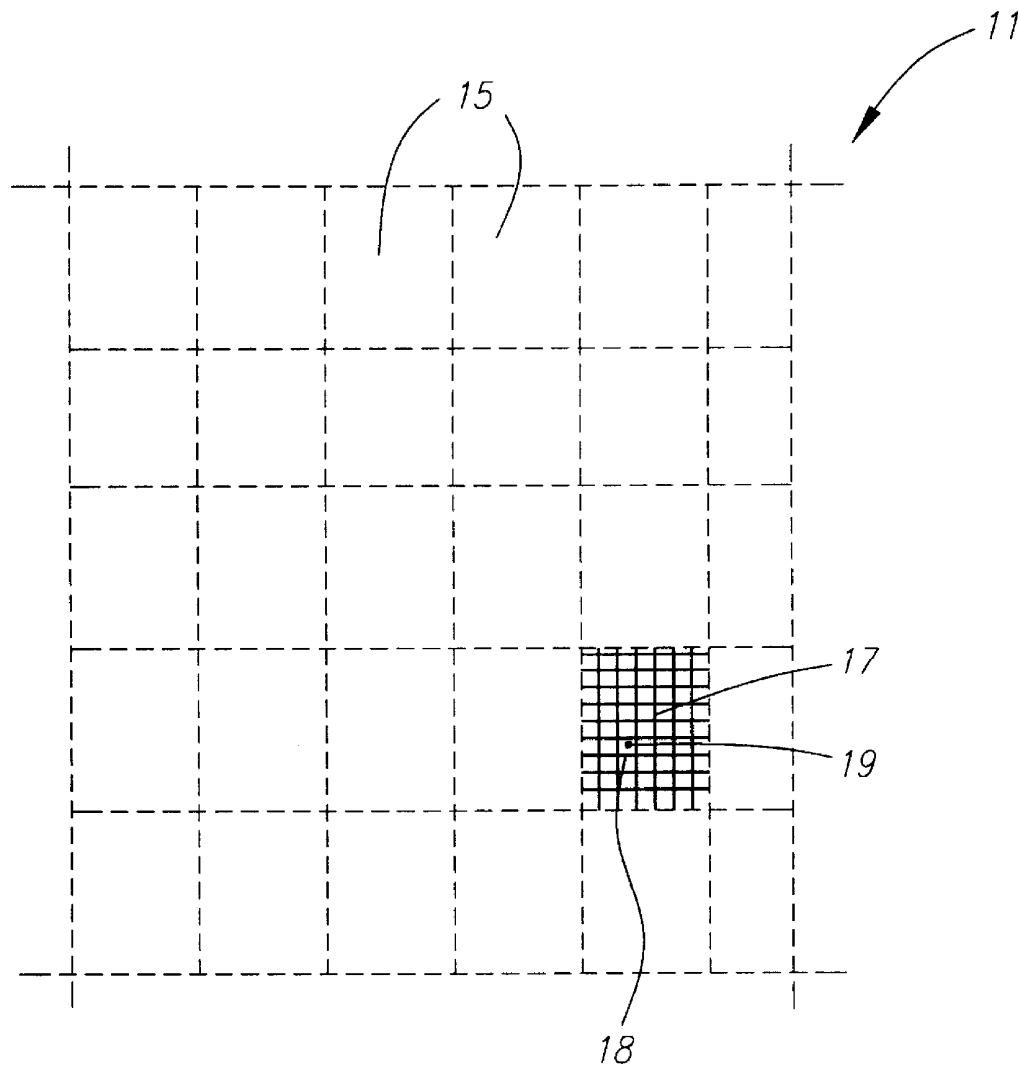
A method and apparatus for defining grid and proprietary addresses of selected locations within a geographical area is described, characterized in that the grid addresses are defined in relation to a grid and can be easily converted to global coordinates defined in relation to a known global referencing system, and the proprietary addresses are unique to the geographical area.

**18 Claims, 17 Drawing Sheets**



Google Exhibit 1052

**Fig. 1**

**Fig. 2**

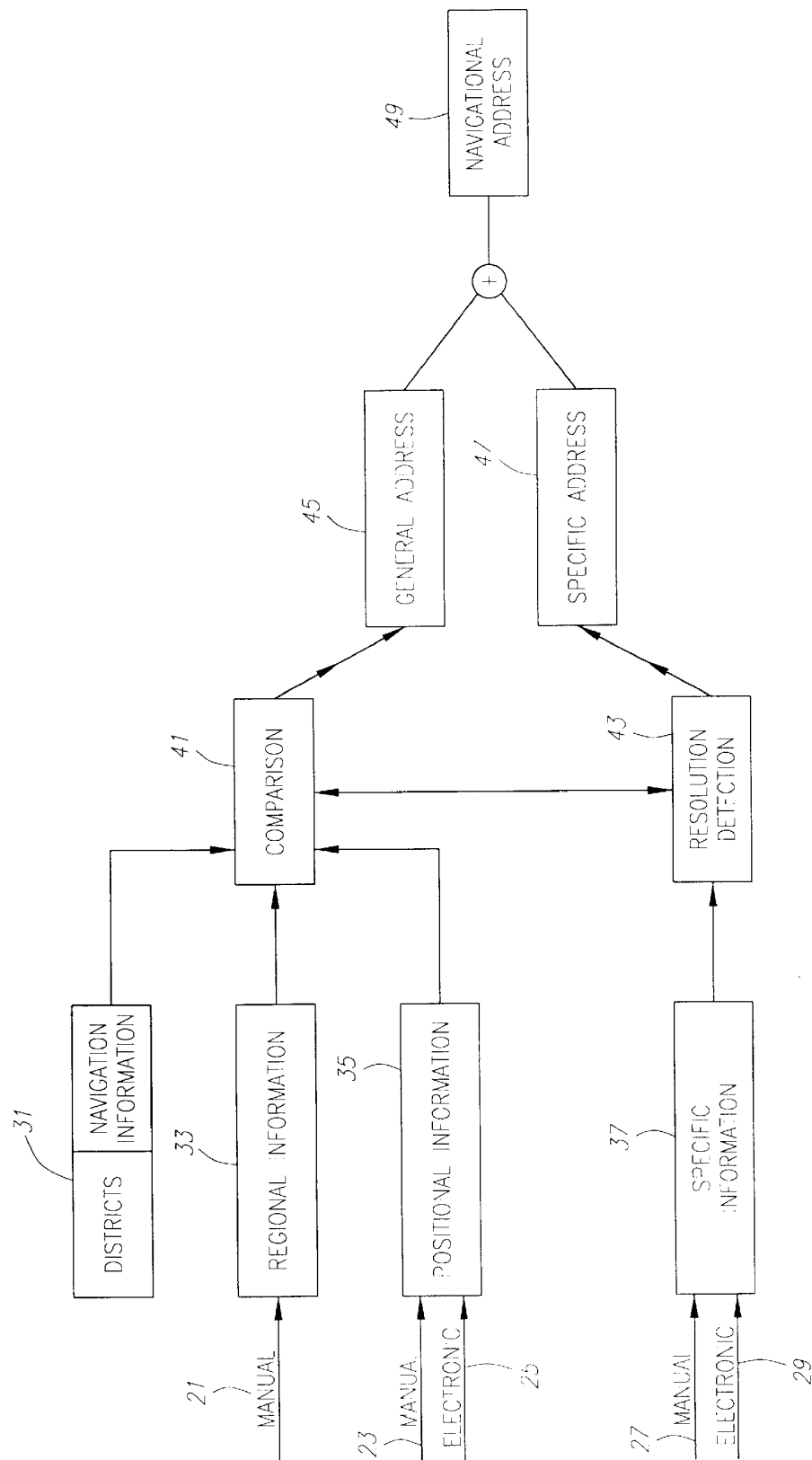
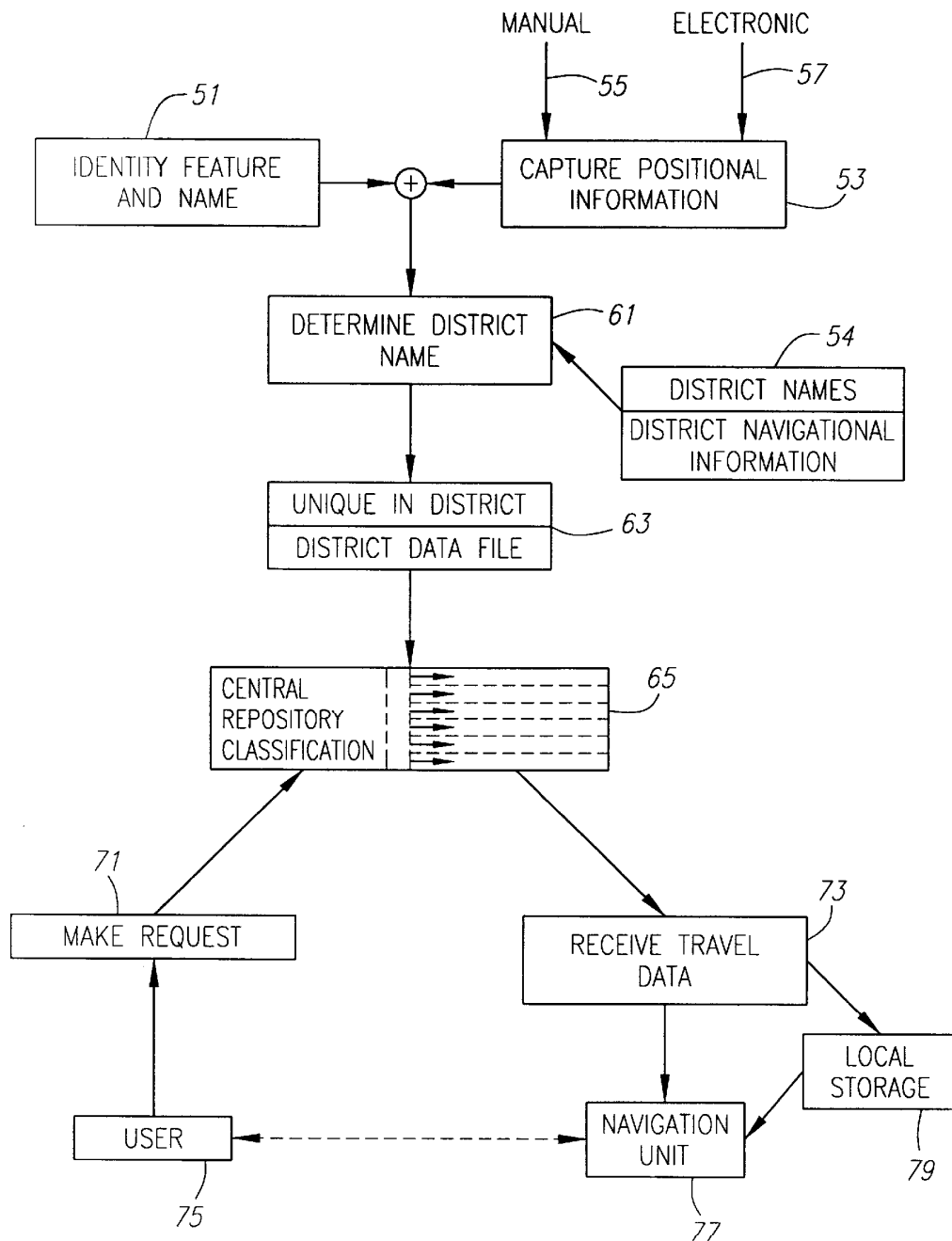


Fig. 3

**Fig. 4**

# Explore Litigation Insights

Docket Alarm provides insights to develop a more informed litigation strategy and the peace of mind of knowing you're on top of things.

## Real-Time Litigation Alerts



Keep your litigation team up-to-date with **real-time alerts** and advanced team management tools built for the enterprise, all while greatly reducing PACER spend.

Our comprehensive service means we can handle Federal, State, and Administrative courts across the country.

## Advanced Docket Research



With over 230 million records, Docket Alarm's cloud-native docket research platform finds what other services can't. Coverage includes Federal, State, plus PTAB, TTAB, ITC and NLRB decisions, all in one place.

Identify arguments that have been successful in the past with full text, pinpoint searching. Link to case law cited within any court document via Fastcase.

## Analytics At Your Fingertips



Learn what happened the last time a particular judge, opposing counsel or company faced cases similar to yours.

Advanced out-of-the-box PTAB and TTAB analytics are always at your fingertips.

## API

Docket Alarm offers a powerful API (application programming interface) to developers that want to integrate case filings into their apps.

## LAW FIRMS

Build custom dashboards for your attorneys and clients with live data direct from the court.

Automate many repetitive legal tasks like conflict checks, document management, and marketing.

## FINANCIAL INSTITUTIONS

Litigation and bankruptcy checks for companies and debtors.

## E-DISCOVERY AND LEGAL VENDORS

Sync your system to PACER to automate legal marketing.