



US007343419B1

(12) **United States Patent**
Robinson

(10) **Patent No.:** **US 7,343,419 B1**
(45) **Date of Patent:** **Mar. 11, 2008**

(54) **REROUTING MEDIA TO SELECTED MEDIA APPLICATIONS**

(75) Inventor: **John Robinson**, South Riding, VA (US)

(73) Assignee: **AOL LLC**, Dulles, VA (US)

(*) Notice: Subject to any disclaimer, the term of this patent is extended or adjusted under 35 U.S.C. 154(b) by 687 days.

(21) Appl. No.: **09/971,086**

(22) Filed: **Oct. 5, 2001**

Related U.S. Application Data

(60) Provisional application No. 60/237,697, filed on Oct. 5, 2000.

(51) **Int. Cl.**
G06F 15/16 (2006.01)
H04N 7/173 (2006.01)
H04N 7/16 (2006.01)

(52) **U.S. Cl.** **709/231; 725/86; 725/135; 725/141**

(58) **Field of Classification Search** **709/231, 709/246, 217, 218, 219, 232; 725/345, 86, 725/135, 136, 137, 138, 139, 140, 141, 142**
See application file for complete search history.

(56) **References Cited**

U.S. PATENT DOCUMENTS

6,009,462 A * 12/1999 Birrell et al. 709/206
6,035,330 A * 3/2000 Astiz et al. 709/217
6,088,717 A * 7/2000 Reed et al. 709/201
6,167,567 A 12/2000 Chiles et al.
6,212,574 B1 4/2001 O'Rourke et al.

6,263,363 B1 * 7/2001 Rosenblatt et al. 709/217
6,292,824 B1 9/2001 Siksa
6,314,501 B1 11/2001 Gulick
6,374,402 B1 * 4/2002 Schmeidler et al. 717/167
6,401,099 B1 * 6/2002 Koppolu et al. 707/103 R
6,460,058 B2 * 10/2002 Koppolu et al. 715/738
6,564,255 B1 * 5/2003 Mobini et al. 709/219
6,681,325 B1 * 1/2004 Marsh et al. 713/2
6,886,171 B2 4/2005 MacLeod
7,017,189 B1 * 3/2006 DeMello et al. 726/26
2002/0166038 A1 11/2002 MacLeod
2003/0037178 A1 2/2003 Vessey
2003/0202010 A1 10/2003 Kerby et al.
2005/0210412 A1 9/2005 Matthews et al.

* cited by examiner

Primary Examiner—Saleh Najjar

Assistant Examiner—V. Korobov

(74) *Attorney, Agent, or Firm*—Fish & Richardson P.C.

(57) **ABSTRACT**

A data stream may be processed using a computer system by receiving the data stream using a browser application, detecting a content type of data in the data stream, temporarily overriding a default rendering process otherwise associated with the content type detected for the data in the data stream by associating a particular rendering process with the data stream based on the type of data in the data stream, and routing the data stream to the particular rendering process. The default rendering process may be identified in a registry of the computer system. It may be temporarily overridden by discriminating among internal and external instances of the browser application used to receive the data stream, and temporarily overriding the default rendering process only if the browser application is an internal instance.

17 Claims, 7 Drawing Sheets

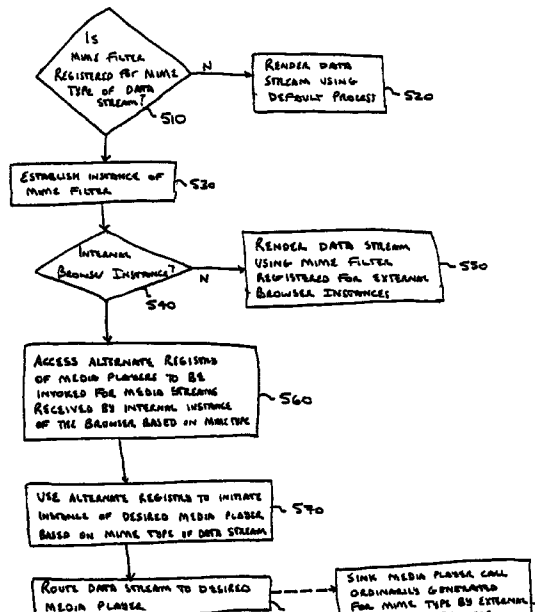
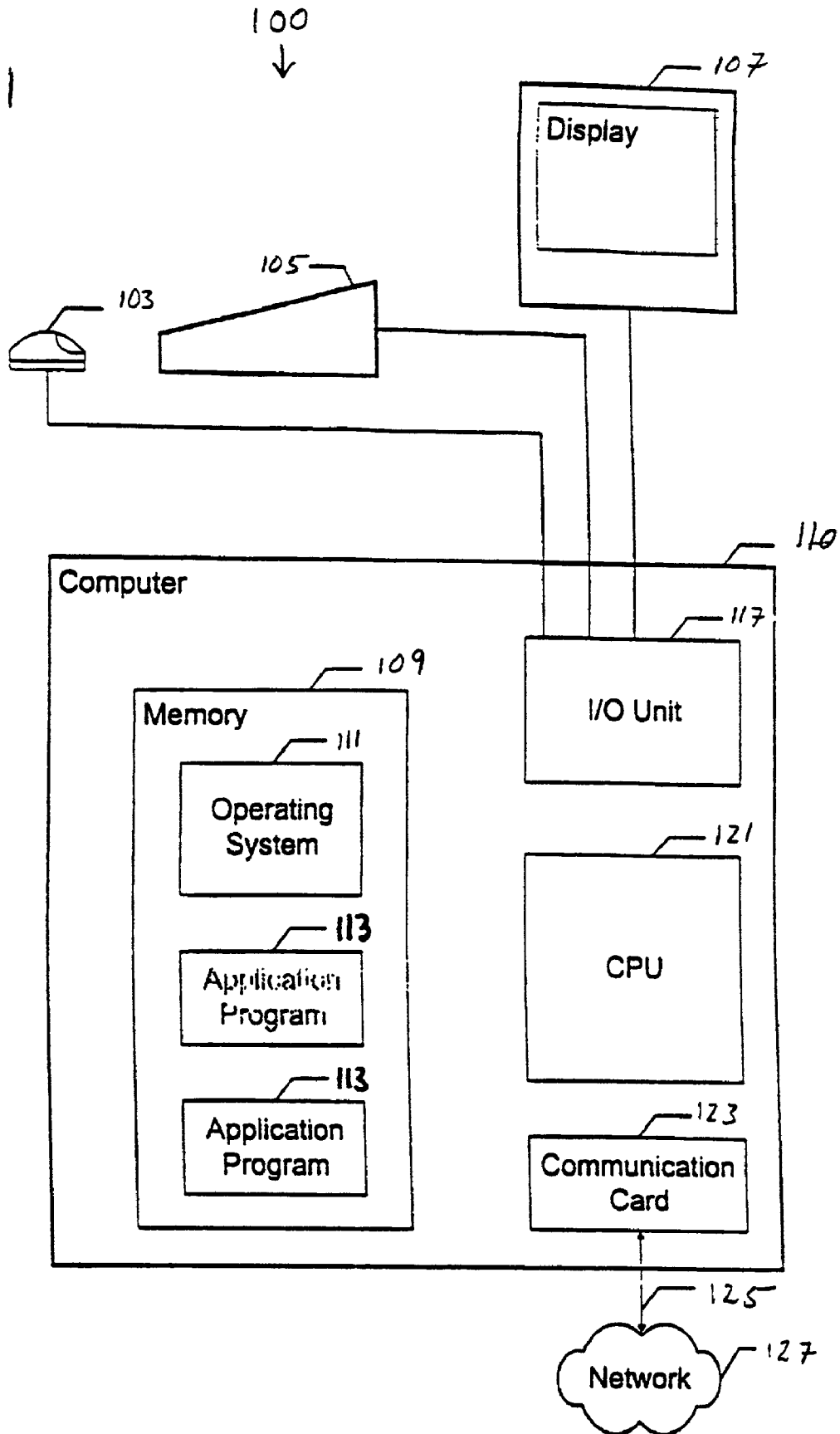


Fig. 1



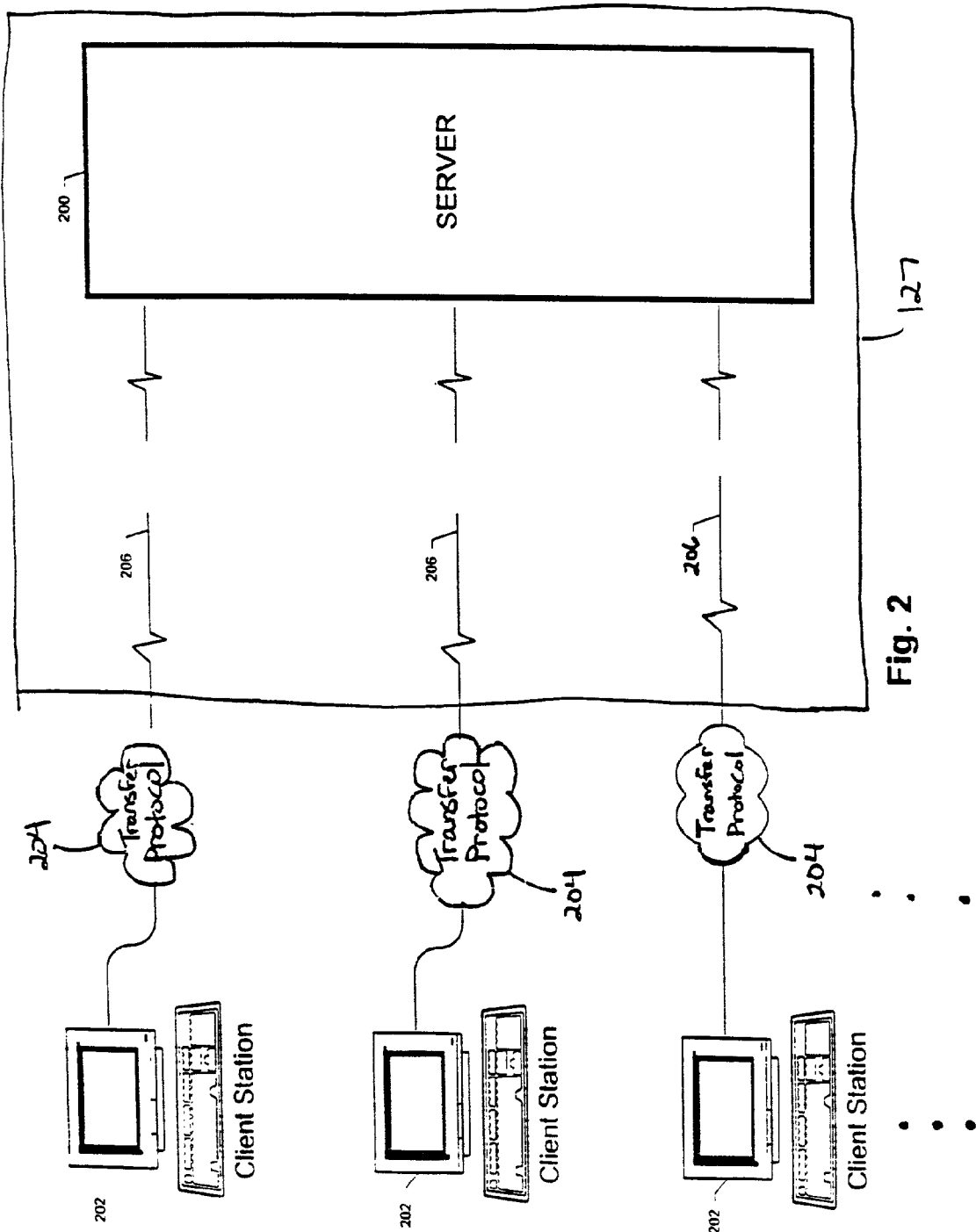


Fig. 2

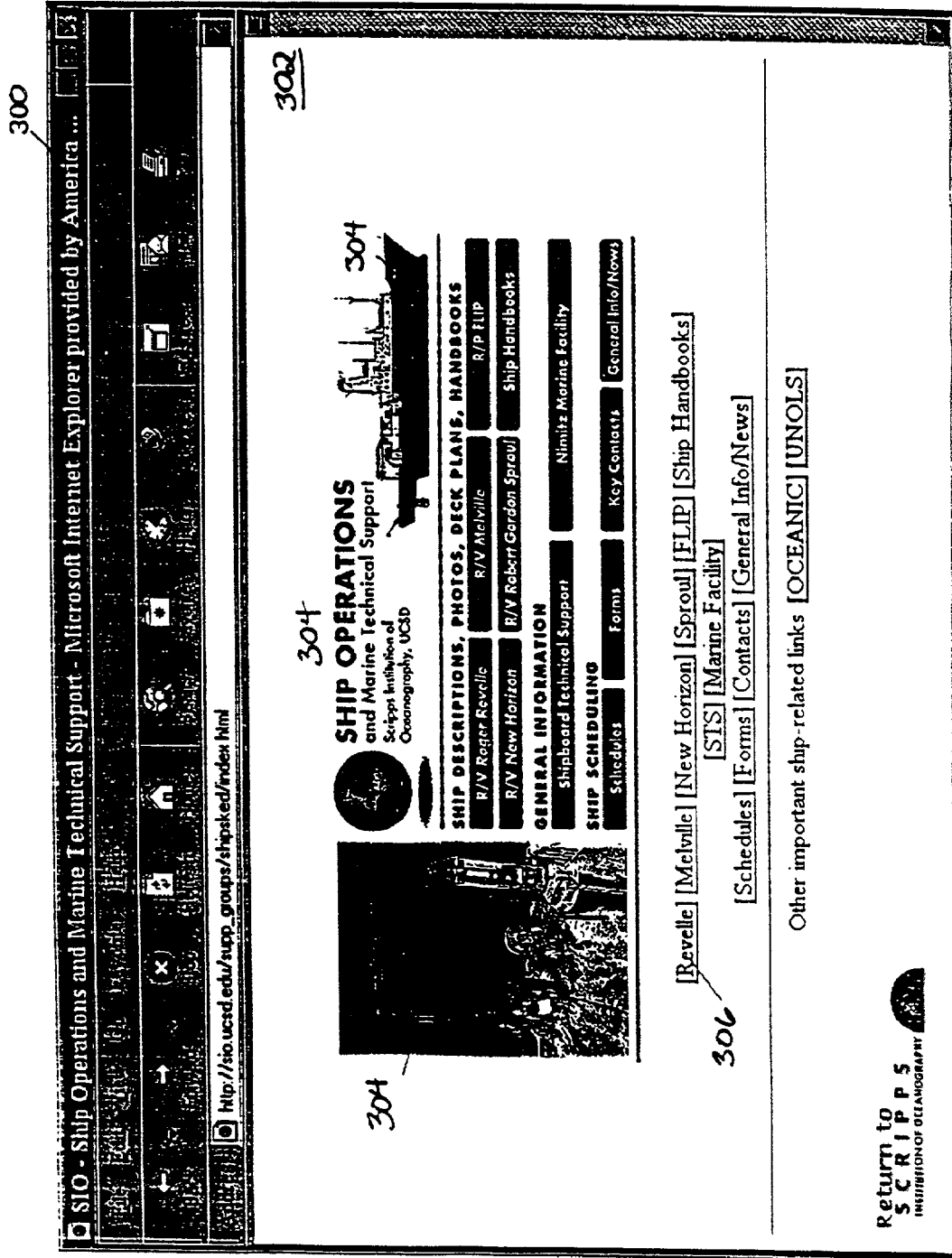


Fig. 3

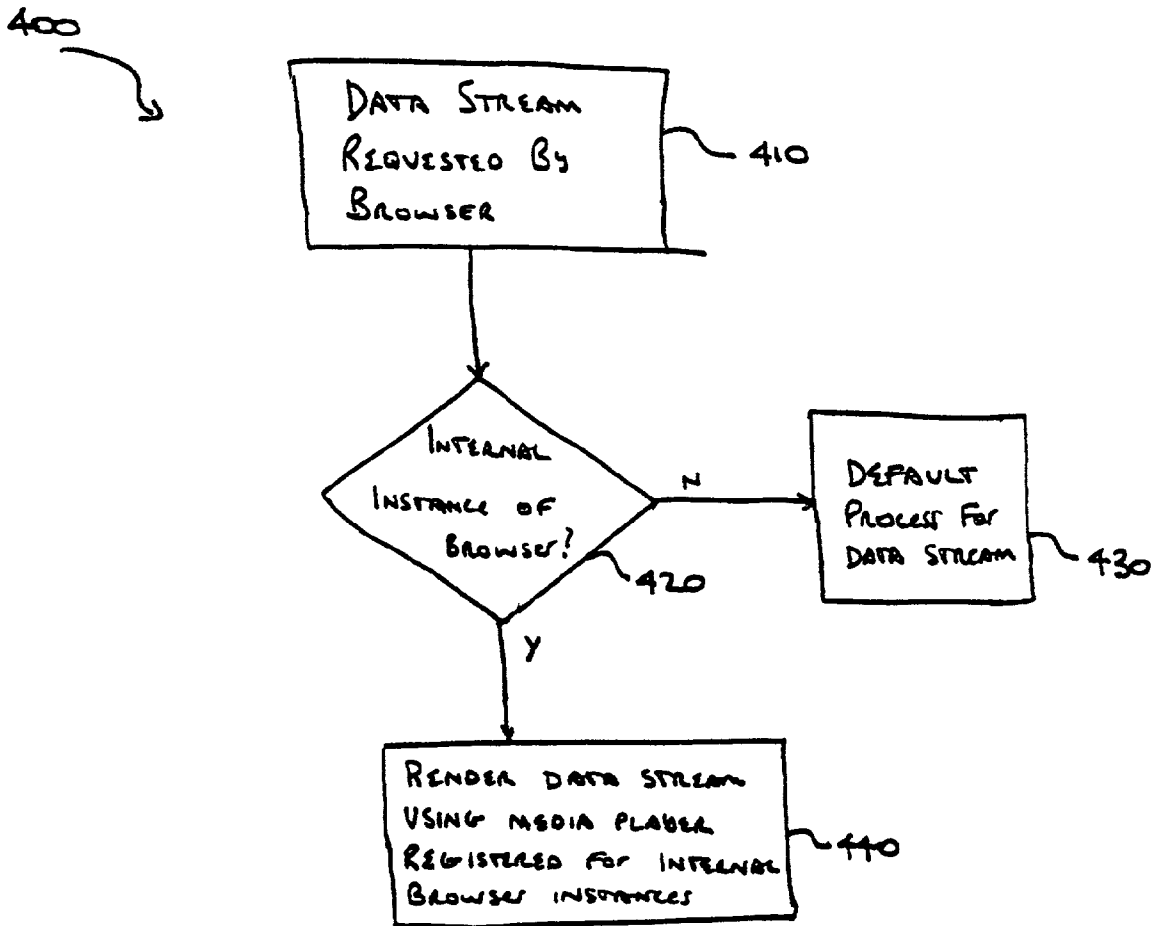


FIG. 4

Explore Litigation Insights

Docket Alarm provides insights to develop a more informed litigation strategy and the peace of mind of knowing you're on top of things.

Real-Time Litigation Alerts



Keep your litigation team up-to-date with **real-time alerts** and advanced team management tools built for the enterprise, all while greatly reducing PACER spend.

Our comprehensive service means we can handle Federal, State, and Administrative courts across the country.

Advanced Docket Research



With over 230 million records, Docket Alarm's cloud-native docket research platform finds what other services can't. Coverage includes Federal, State, plus PTAB, TTAB, ITC and NLRB decisions, all in one place.

Identify arguments that have been successful in the past with full text, pinpoint searching. Link to case law cited within any court document via Fastcase.

Analytics At Your Fingertips



Learn what happened the last time a particular judge, opposing counsel or company faced cases similar to yours.

Advanced out-of-the-box PTAB and TTAB analytics are always at your fingertips.

API

Docket Alarm offers a powerful API (application programming interface) to developers that want to integrate case filings into their apps.

LAW FIRMS

Build custom dashboards for your attorneys and clients with live data direct from the court.

Automate many repetitive legal tasks like conflict checks, document management, and marketing.

FINANCIAL INSTITUTIONS

Litigation and bankruptcy checks for companies and debtors.

E-DISCOVERY AND LEGAL VENDORS

Sync your system to PACER to automate legal marketing.