

- [54] **DYNAMICALLY VARIABLE KEYBOARD TERMINAL**
- [75] Inventors: **Roy Kaplow**, Newton; **Michael K. Molnar**, Cambridge, both of Mass.
- [73] Assignee: **Massachusetts Institute of Technology**, Cambridge, Mass.
- [21] Appl. No.: **814,723**
- [22] Filed: **Jul. 11, 1977**
- [51] Int. Cl.² **G06F 3/14; G06F 13/06**
- [52] U.S. Cl. **364/900**
- [58] Field of Search ... **364/200 MS File, 900 MS File; 197/98; 340/365 R, 324 A**

Flexibility in Computer Interaction", Control Engineering, Jul. 1976, pp. 33-34.

Primary Examiner—Gareth D. Shaw
Assistant Examiner—Thomas M. Heckler
Attorney, Agent, or Firm—Arthur A. Smith, Jr.; Robert F. O'Connell

[57] **ABSTRACT**

A dynamically variable keyboard terminal system having a keyboard display unit using an input panel with a plurality of touch-sensitive locations thereon and a keyboard display unit in alignment therewith. The system includes means for generating and storing information concerning symbols which make up one or more working symbol sets, such symbol information being author definable in accordance with a predetermined terminal definition language. The symbol information can include a symbol configuration for display, if applicable, or a symbol action to be performed, if applicable. Means are also provided for generating and storing information concerning a plurality of keyboard images which use such symbols and which keyboard information can be used for displaying a keyboard image at the keyboard display unit. A user can selectively touch one or more such locations so as to obtain symbol information for display on the keyboard display unit or on a monitor display unit, if applicable, or for performing an action associated with such symbol, if applicable.

[56] **References Cited**

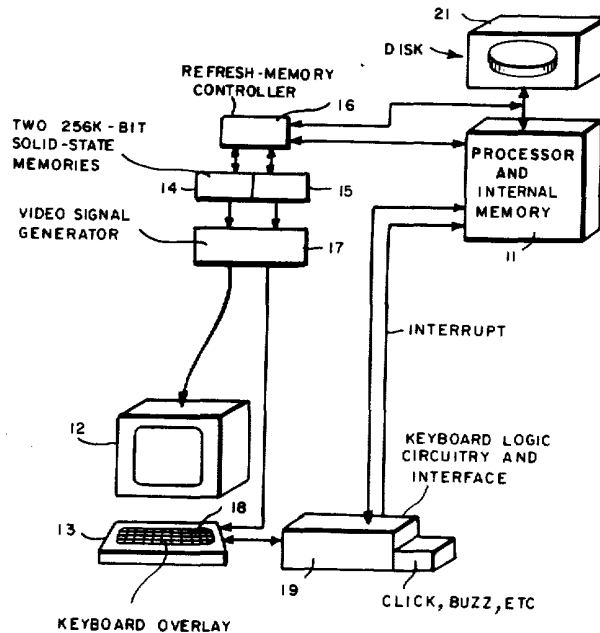
U.S. PATENT DOCUMENTS

3,325,786	6/1967	Shashoua et al.	364/900
3,534,396	10/1970	Hart et al.	364/200
3,631,457	12/1971	Hamada et al.	340/324 A
3,731,299	5/1973	Bouchard et al.	340/324 A
3,757,322	9/1973	Barkan et al.	340/365 C
3,760,360	9/1973	Reynolds et al.	340/365 R X
3,766,528	10/1973	Ichida	364/900
3,773,989	11/1973	Hacon	340/365 R X
3,777,222	12/1973	Harris	340/365 S X
3,811,113	5/1974	Saito et al.	364/900
3,859,635	1/1975	Watson et al.	364/200
4,028,695	6/1977	Saich	340/324 A X
4,070,710	1/1978	Sukonick et al.	364/900

OTHER PUBLICATIONS

Crook, Ken, "CRT Touch Panels Provide Maximum

12 Claims, 18 Drawing Figures



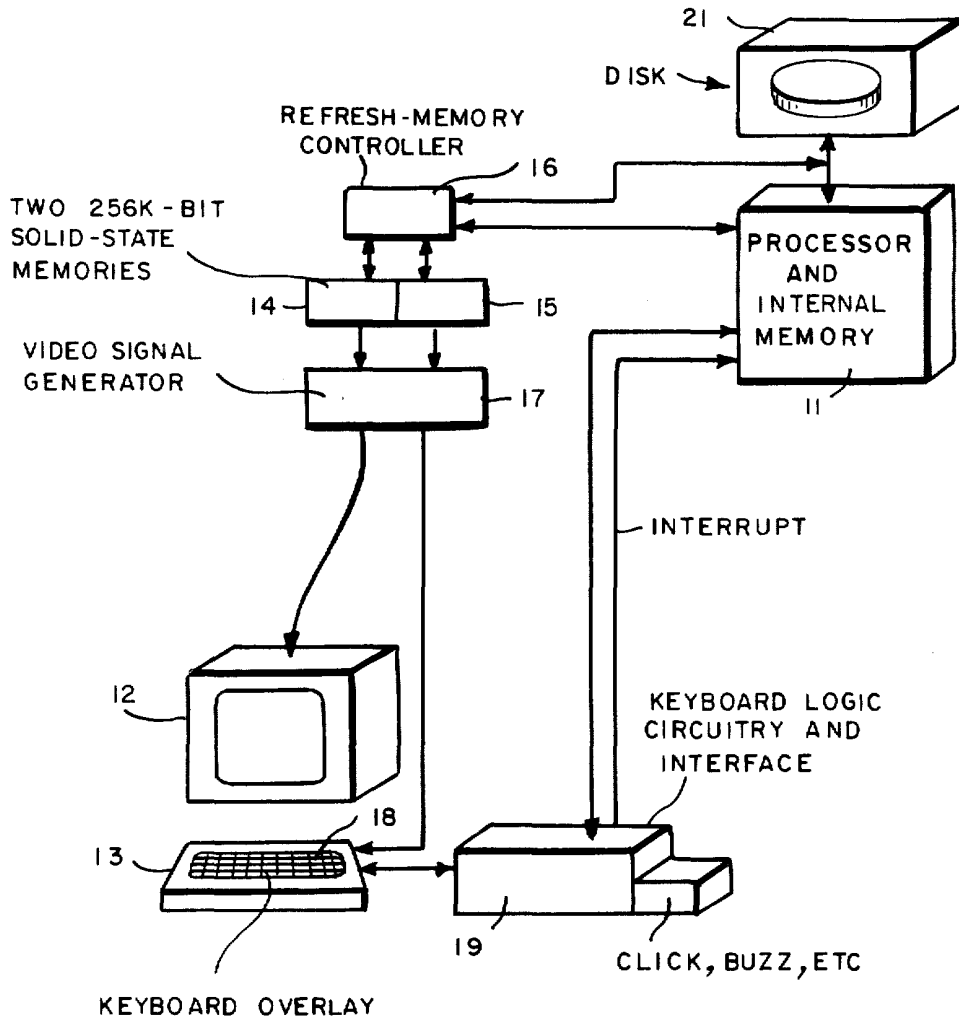
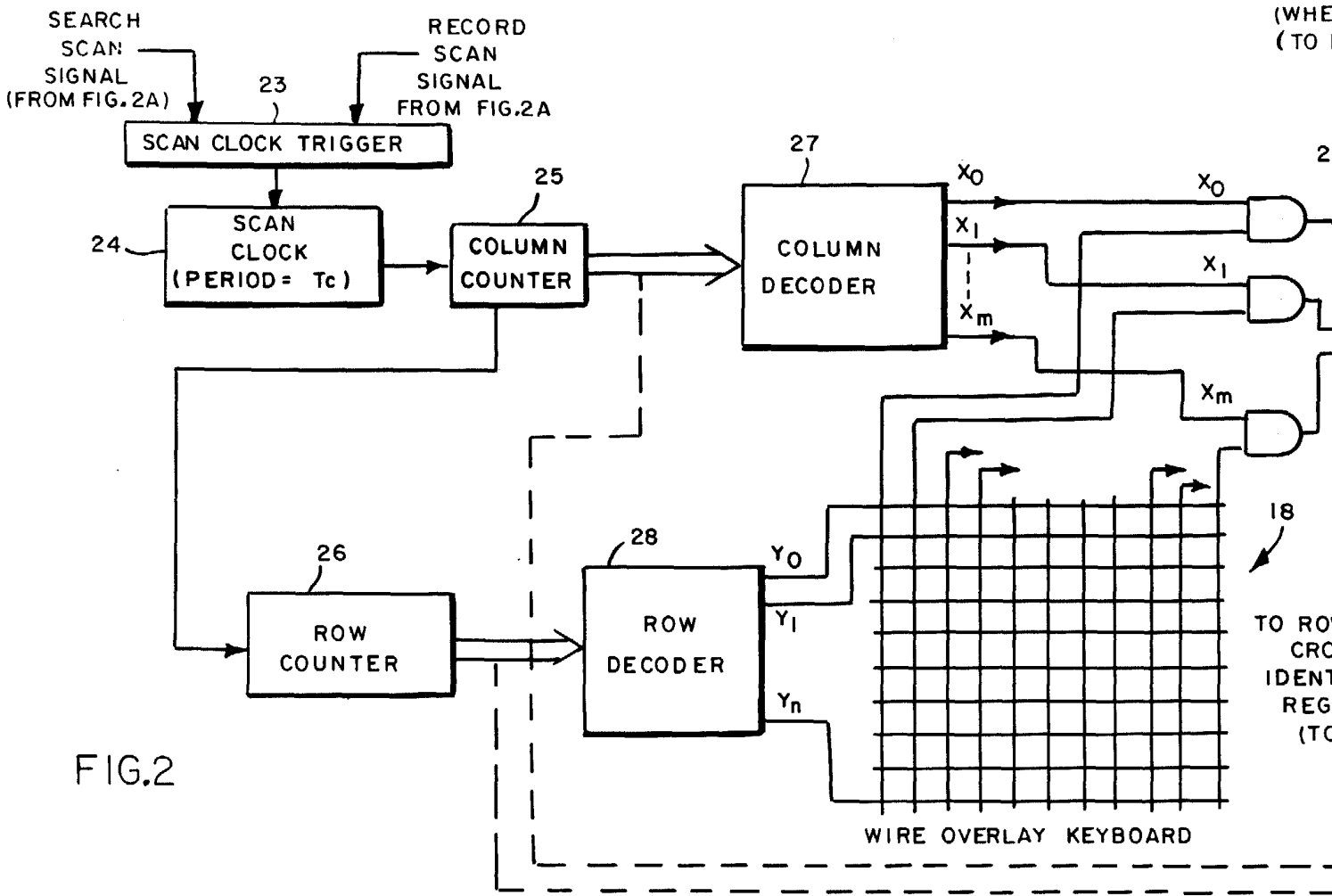


FIG. 1



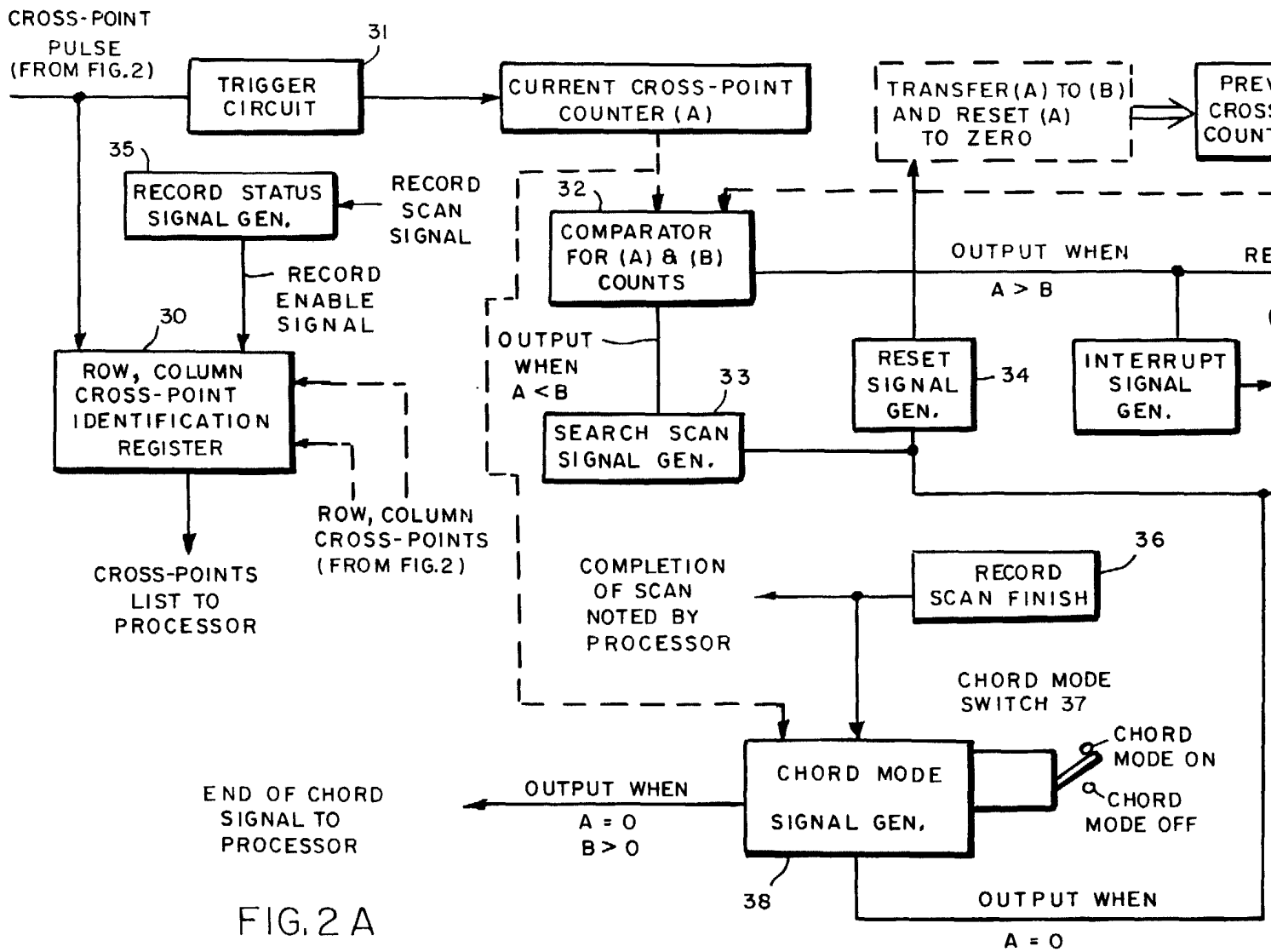


FIG. 2 A

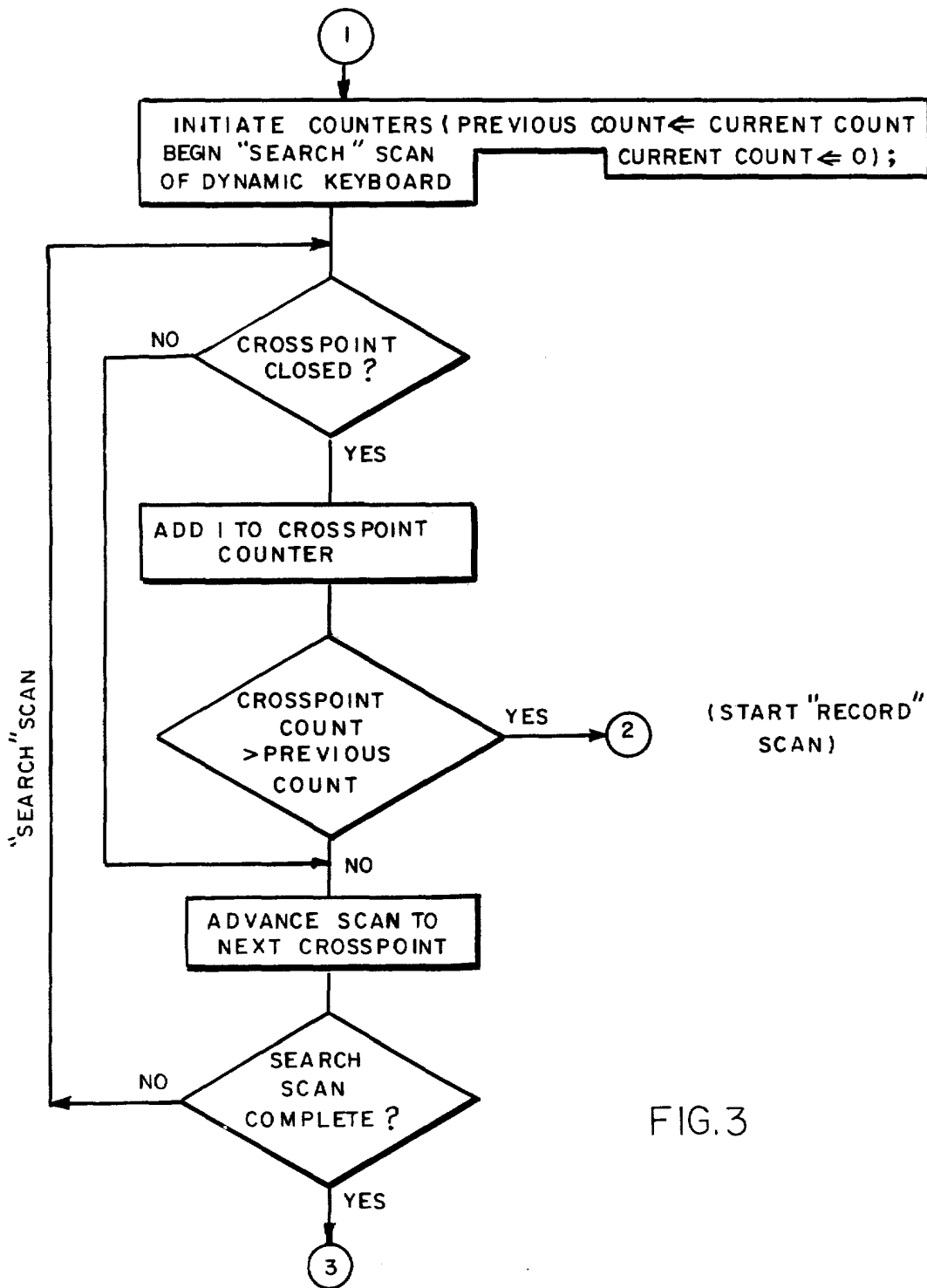


FIG. 3

Explore Litigation Insights

Docket Alarm provides insights to develop a more informed litigation strategy and the peace of mind of knowing you're on top of things.

Real-Time Litigation Alerts



Keep your litigation team up-to-date with **real-time alerts** and advanced team management tools built for the enterprise, all while greatly reducing PACER spend.

Our comprehensive service means we can handle Federal, State, and Administrative courts across the country.

Advanced Docket Research



With over 230 million records, Docket Alarm's cloud-native docket research platform finds what other services can't. Coverage includes Federal, State, plus PTAB, TTAB, ITC and NLRB decisions, all in one place.

Identify arguments that have been successful in the past with full text, pinpoint searching. Link to case law cited within any court document via Fastcase.

Analytics At Your Fingertips



Learn what happened the last time a particular judge, opposing counsel or company faced cases similar to yours.

Advanced out-of-the-box PTAB and TTAB analytics are always at your fingertips.

API

Docket Alarm offers a powerful API (application programming interface) to developers that want to integrate case filings into their apps.

LAW FIRMS

Build custom dashboards for your attorneys and clients with live data direct from the court.

Automate many repetitive legal tasks like conflict checks, document management, and marketing.

FINANCIAL INSTITUTIONS

Litigation and bankruptcy checks for companies and debtors.

E-DISCOVERY AND LEGAL VENDORS

Sync your system to PACER to automate legal marketing.