

THE RAND TABLET: A MAN-MACHINE GRAPHICAL COMMUNICATION DEVICE*

*M. R. Davis and T. O. Ellis
The RAND Corporation
Santa Monica, California*

Present-day user-computer interface mechanisms provide far from optimum communication, considerably reducing the probability that full advantage is being taken of the capabilities of either the machine or of the user. A number of separate research projects are underway, aimed at investigating ways of improving the languages by which man communicates with the computer, and at developing more useful and more versatile communication channels. Several of these projects are concerned with the design of "two-dimensional" or "graphical" man-computer links.

Early in the development of man-machine studies at RAND, it was felt that exploration of man's existent dexterity with a free, pen-like instrument on a horizontal surface, like a pad of paper, would be fruitful. The concept of generating hand-directed, two-dimensional information on a surface not coincident with the display device (versus a "light pen") is not new and has been examined by others in the field. It is felt, however, that the stylus-tablet device developed at RAND (see Fig. 1) is a highly practical instrument, allowing further investigation of new freedoms of expression in direct communications with computers.

The RAND tablet device generates 10-bit x and 10-bit y stylus position information. It

is connected to an input channel of a general-purpose computer and also to an oscilloscope display. The display control multiplexes the stylus position information with computer-generated information in such a way that the oscilloscope display contains a composite of the current pen position (represented as a dot) and the computer output. In addition, the computer may regenerate meaningful track history on the CRT, so that while the user is writing, it appears that the pen has "ink." The displayed "ink" is visualized from the oscilloscope display while hand-directing the stylus position on the tablet, as in Fig. 1. Users normally adjust within a few minutes to the conceptual superposition of the displayed ink and the actual off-screen pen movement. There is no apparent loss of ease or speed in writing, printing, constructing arbitrary figures, or even in penning one's signature.

To maintain the "naturalness" of the pen device, a pressure-sensitive switch in the tip of the stylus indicates "stroke" or intended input information to the computer. This switch is actuated by approximately the same pressure normally used in writing with a pencil, so that strokes within described symbols are defined in a natural manner.

* This research was supported by the Advanced Research Projects Agency under contract No. SD-79. Any views or conclusions should not be interpreted as representing the official opinion or policy of ARPA or of the RAND Corporation.

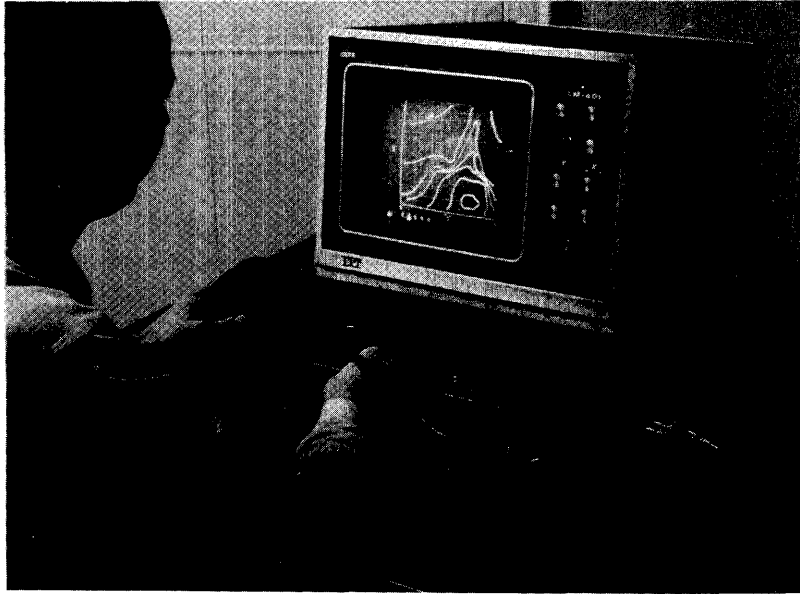


Figure 1. Complete System in Operation.

In addition to the many advantages of a "live pad of paper" for control and interpretive purposes, the user soon finds it very convenient to have no part of the "working" surface (the CRT) covered by the physical pen or the hand.

The gross functioning of the RAND tablet system is best illustrated through a general description of the events that occur during a

major cycle ($220 \mu\text{sec}$; see timing diagram, Fig. 2). Figure 3 is the system block diagram with the information flow paths indicated by the heavier lines. The clock sequencer furnishes a time sequence of 20 pulses to the blocking oscillators. During each of the 20 timing periods, a blocking oscillator gives a coincident positive and negative pulse on two lines attached to the tablet.

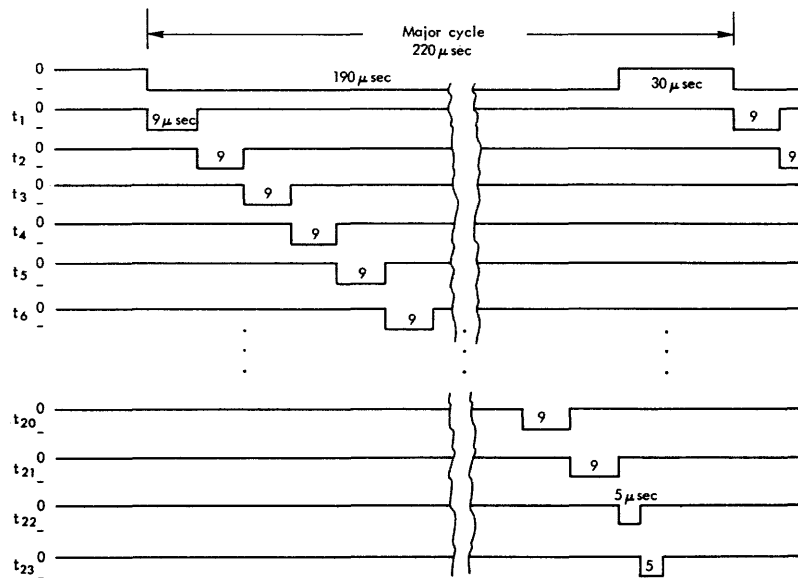


Figure 2. Timing Waveforms (μsec).

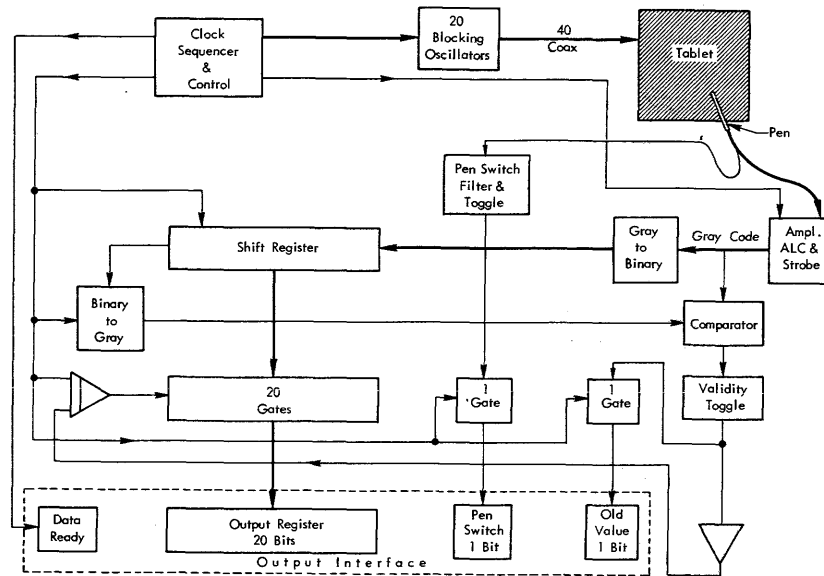


Figure 3. Graphic Input System Block Diagram.

The pulses are encoded by the tablet as serial (x,y) Gray-code position information which is sensed by the high-input-impedance, pen-like stylus from the epoxy-coated tablet surface. The pen is of roughly the same size, weight, and appearance as a normal fountain pen. The pen information is strobed, converted from Gray to binary code, assembled in a shift register, and gated in parallel to an interface register.

The printed-circuit, all digital tablet, complete with printed-circuit encoding, is a relatively new concept made possible economically by advances in the art of fine-line photoetching. The tablet is the hub of the graphic input system, and its physical construction and the equivalent circuit of the tablet itself will be considered before proceeding to the system detail.

The basic building material for the tablet is 0.5-mil-thick Mylar sheet clad on both sides with 1/2-ounce copper (approximately 0.6 mils thick). Both sides of the copper-clad Mylar sheets are coated with photo resist, exposed to artwork patterns, and etched using standard fine-line etching techniques. The result is a printed circuit on each side of the Mylar, each side in proper registration with the other. (Accurate registration is important only in the encoder sections, as will be seen later.) Figure 4 is a photo of the printed circuit before it has

been packaged. The double-sided, printed screen is cemented to a smooth, rigid substrate and sprayed with a thin coat of epoxy to provide a good wear surface and to prevent electrical contact between the stylus and the printed circuit. The writing area on the tablet is 10.24×10.24 in. with resolution of 100 lines per inch. The entire tablet is mounted in a metal case with only the writing area exposed, as can be seen in Fig. 1.

Although it would be very difficult to fully illustrate a 1024×1024 -line system, it does seem necessary, for clarity, to present all the details of the system. Thus, an 8×8 -line system will be used for the system description and

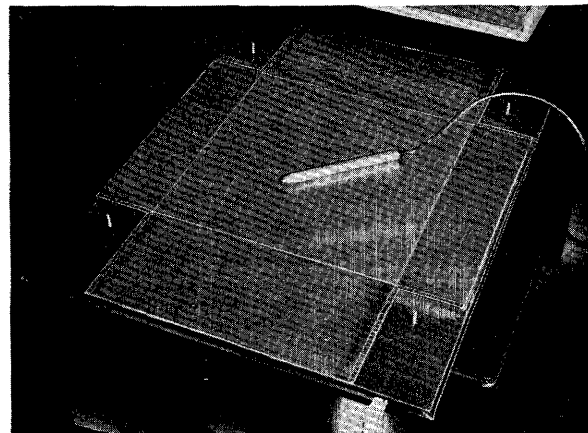


Figure 4. Unmounted Printed Circuit.

expansion of the concept to larger systems will be left to the reader.

Figure 5 shows the detailed, printed circuit on each side of the 0.5-mil Mylar for an 8×8 -line system. The top circuit contains the x position lines and the two y encoder sections, while the bottom circuit has the y position lines and the two x encoder sections. It should be noted that the position lines are connected at the ends to wide, code-coupling buses. These buses are made as wide as possible in order to obtain the maximum area, since the encoding scheme depends on capacitive coupling from the encoder sections through the Mylar to these wide buses. It should be further noted that the position lines are alternately connected to wide buses on opposite ends. This gives symmetry to the tablet and minimizes the effect of registration errors.

With reference to Fig. 5, at time t_1 encoder pads p_{1+} are pulsed with a positive pulse and pads p_{1-} are pulsed with a negative pulse. Pads p_{1+} are capacitively coupled through the Mylar to y position lines $y_5, y_6, y_7,$ and y_8 , thus coupling a positive pulse to these lines. Pads p_{1-} are capacitively coupled to y position lines $y_1, y_2, y_3,$ and y_4 , putting a negative pulse on these lines. At time t_2 , encoder pads p_{2+} and p_{2-} are pulsed plus and minus, respectively, putting positive pulses on y position lines $y_3, y_4, y_5,$ and y_6 , and negative pulses on y position

lines $y_1, y_2, y_7,$ and y_8 . At the end of time t_3 , each y position line has been energized with a unique serial sequence of pulses. If positive pulses are considered as ones and negative pulses are zeroes, the Gray-pulse code appearing on the y position wires is as follows:

y_1	000
y_2	001
y_3	011
y_4	010
y_5	110
y_6	111
y_7	101
y_8	100

The x encoder pads are now sequentially pulsed at times $t_4, t_5,$ and t_6 , giving unique definitions to each x position line.

If a pen-like stylus with high input impedance is placed anywhere on the tablet, it will pick up a time sequence of six pulses, indicating the (x,y) position of the stylus. It should be pointed out again that the stylus is electrostatically coupled to the (x,y) position lines through the thin, epoxy wearcoat.

If the stylus is placed on the tablet surface at a point (x_i, y_j) , the pulse stream appearing at the pen tip would be as indicated in Fig. 6. This detected pulse pattern will repeat itself every major cycle as long as the stylus is held in this position. If the stylus is moved, a differ-

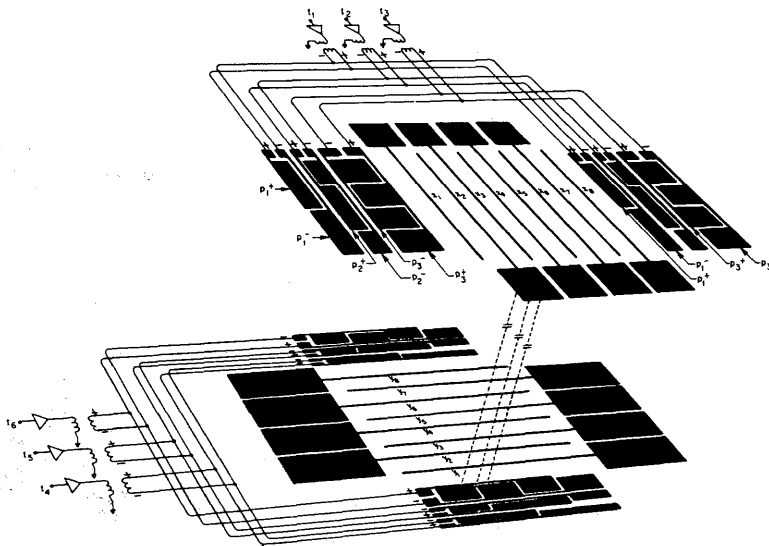


Figure 5. Double-sided Printed-circuit Layout for 8×8 System.

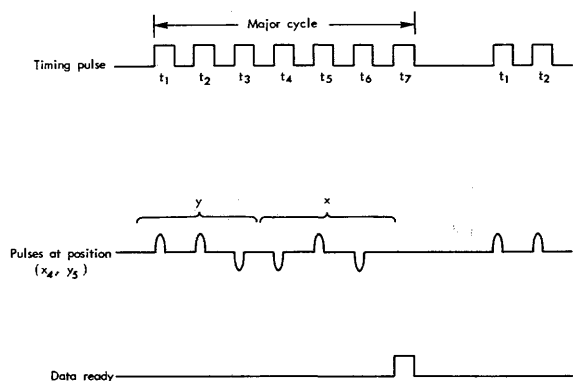


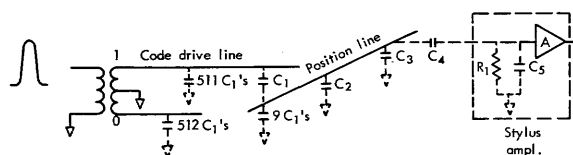
Figure 6. Timing Diagram and Pen Signals for the Example 8×8 System.

ent pulse pattern is sensed, indicating a new (x,y) position.

Since there are 1024 x position lines and 1024 y position lines, 20 bits are required to define an (x,y) position. The actual timing used in the RAND system was shown in Fig. 2. Timing pulses t_{21} , t_{22} , and t_{23} are additional pulses used for bookkeeping and data manipulation at the end of each major cycle.

The position lines on the full-size tablet are 3 mils wide with a 7-mil separation. The code-coupling pads are 16 to 17 mils wide with a 3- to 4-mil separation. Figure 4 shows that the encoding pads which couple to the lower set of position lines (y position lines) are enlarged. This greater coupling area increases the signal on the lower lines to compensate for the loss caused by the shielding effect on the upper lines (since they lie between the lower lines and the stylus pick-up). The encoding pad for the two least-significant bits in both x and y was also enlarged to offset the effect of neighboring-line cancellations. With these compensations, all pulses received at the stylus tip are of approximately the same amplitude.

Figure 7 is an illustration of the approximate equivalent circuit of the encoder-tablet-stylus system, along with typical system parameter values. It is clear that the values of C_1 vary with encoder-pad size, and the value C_4 varies according to whether top or bottom lines are being considered. The value of C_4 is also dependent on the stylus-tip geometry and wear-coat thickness of the tablet. The signals arriving at the input to the stylus amplifier are ap-



- C_1 = Encoder pad coupling capacity ~ 5 pf
- C_2 = Capacity to adjacent parallel wires in tablet ~ 10 pf
- C_3 = Capacity to crossing lines in screen ~ 100 pf
- C_4 = Stylus-to-tablet coupling capacity $\sim .5$ pf
- C_5 = Stylus input shunt capacity ~ 5 pf
- R = Stylus input resistance ~ 200 K Ω

Figure 7. Equivalent Circuit of Encoder-Tablet-Stylus Coupling and Attenuating Elements.

proximately 1/300 of the drive-line signals. The character of the signals at the stylus input is greatly dependent on the drive-pulse rise time.

Figure 8 is an oscilloscope pattern of the amplified signals at the stylus output.[†] These signals are amplified again and strobed into a Gray-code toggle. An x bit at t_8 and a y bit at t_{17} are smaller than the rest. This indicates that the stylus tip is somewhere between lines and these are the bits that are changing.

Since the final stages of the amplification and the strobing circuit are dc-coupled, the system is vulnerable to shift in the dc signal level. For this reason, an automatic level control (ALC) circuit has been provided to insure maximum recognizability of signals. During the first 180 μ sec of a major cycle, the stylus is picking up bits from the tablet. During the last 40 μ sec, the tablet is quiet—i.e., the stylus is at its quiescent level. During this 40- μ sec interval, the quiescent level of the pen is strobed into the ALC toggle. If the quiescent level is recognized as a zero, the ALC condenser changes slowly into the proper direction to change the recognition (via a bias circuit) to a one, and vice versa. For a perfectly balanced system, the ALC toggle would alternate between 1 and 0 with each major cycle.

A Gray code was selected so that only one bit would change value with each wire position, giving a complete and unambiguous deter-

[†] It will be noted in the oscilloscope pattern of Fig. 8 that the pulsing sequence is x first and y last. This is mentioned only because it is the opposite order of that shown in the 8×8 -line example system discussed above; otherwise, it is unimportant.

Explore Litigation Insights

Docket Alarm provides insights to develop a more informed litigation strategy and the peace of mind of knowing you're on top of things.

Real-Time Litigation Alerts



Keep your litigation team up-to-date with **real-time alerts** and advanced team management tools built for the enterprise, all while greatly reducing PACER spend.

Our comprehensive service means we can handle Federal, State, and Administrative courts across the country.

Advanced Docket Research



With over 230 million records, Docket Alarm's cloud-native docket research platform finds what other services can't. Coverage includes Federal, State, plus PTAB, TTAB, ITC and NLRB decisions, all in one place.

Identify arguments that have been successful in the past with full text, pinpoint searching. Link to case law cited within any court document via Fastcase.

Analytics At Your Fingertips



Learn what happened the last time a particular judge, opposing counsel or company faced cases similar to yours.

Advanced out-of-the-box PTAB and TTAB analytics are always at your fingertips.

API

Docket Alarm offers a powerful API (application programming interface) to developers that want to integrate case filings into their apps.

LAW FIRMS

Build custom dashboards for your attorneys and clients with live data direct from the court.

Automate many repetitive legal tasks like conflict checks, document management, and marketing.

FINANCIAL INSTITUTIONS

Litigation and bankruptcy checks for companies and debtors.

E-DISCOVERY AND LEGAL VENDORS

Sync your system to PACER to automate legal marketing.