

(12) **UK Patent Application** (19) **GB** (11) **2 321 982** (13) **A**

(43) Date of A Publication 12.08.1998

(21) Application No **9702544.9**

(22) Date of Filing **07.02.1997**

(71) Applicant(s)
Fujitsu ICL Computers Oy
(Incorporated in Finland)
Po Box 10, Karaportti 8, FIN-02610 Espoo, Finland

(72) Inventor(s)
Sakari Välikangas

(74) Agent and/or Address for Service
S M Dupuy
International Computers Limited, Cavendish Road,
STEVENAGE, Hertfordshire, SG1 2DY,
United Kingdom

(51) INT CL⁶
G06F 1/16

(52) UK CL (Edition P)
G4A ADT

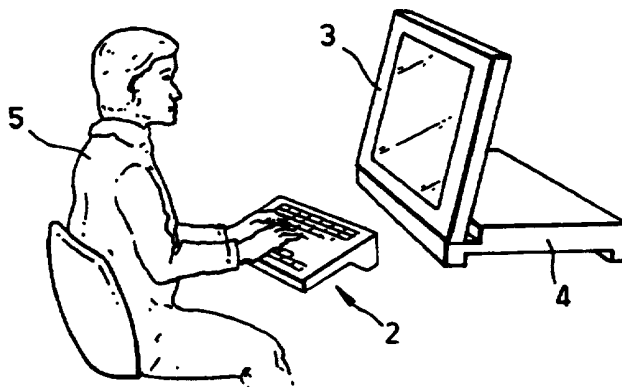
(56) Documents Cited
EP 0394879 A1 **US 5544005 A** **US 4903221 A**

(58) Field of Search
UK CL (Edition O) G4A ADT
INT CL⁶ G06F 1/16
On-line: WPI

(54) Abstract Title
Positioning notebook computer screen to facilitate use with external keyboard

(57) When using an external keyboard with a notebook computer, the integral keyboard prevents the screen from being located at the optimum distance from the user. So that the external keyboard can be placed nearer to the notebook's screen, said screen may be capable of rotating through 270° about its hinge from the closed position, allowing the notebook to be placed with its integral keyboard face down on a work surface thereby permitting location of the external keyboard nearer the screen. Alternatively, with the screen open to an angle of 270° the notebook can be stood on its ends in an "A" shaped configuration. In this mode the screen display needs inverting. In a further mode the screen is detachable and may be relocated at the end of the integral keyboard which is nearest the user. Alternatively, the screen can rotate about an axis perpendicular to its hinge.

Fig.2.



GB 2 321 982

Fig. 1.

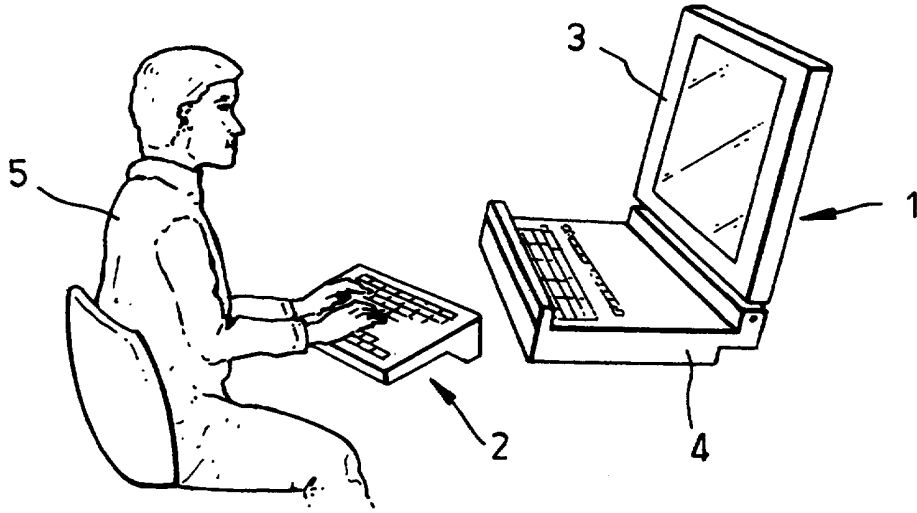


Fig. 2.

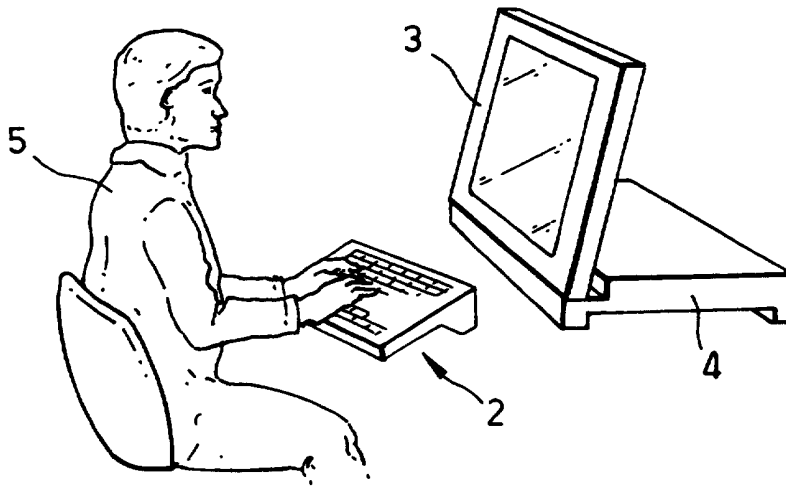


Fig.3.

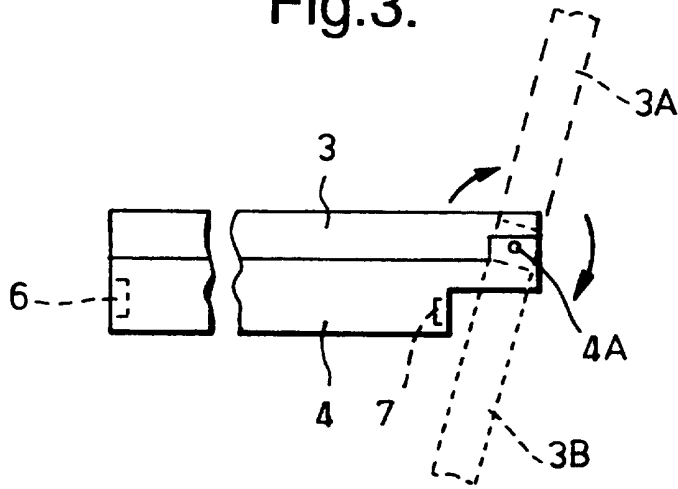


Fig.4.

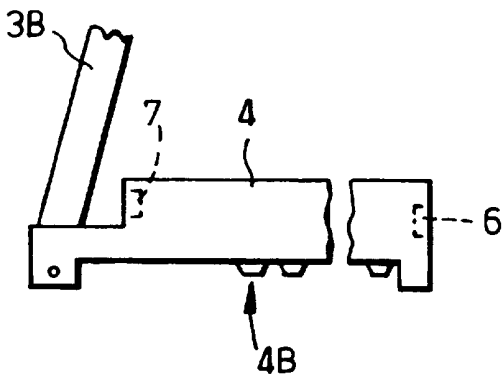


Fig.4A.

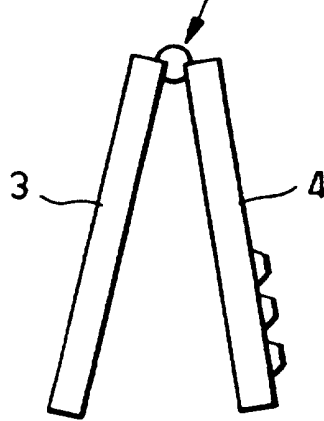
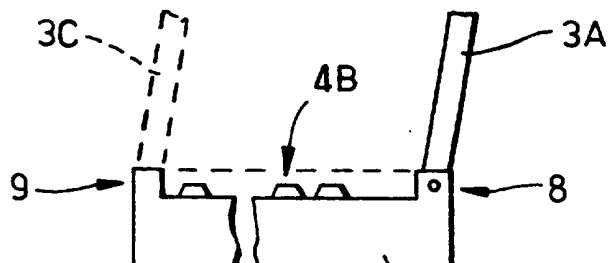


Fig.5.



NOTEBOOK COMPUTERS

This invention relates to notebook computers and in particular to notebook computers which, in addition to being usable in the portable, or free-standing, mode, facilitate use in a primary workstation arrangement at a workplace.

The technological advances in notebook screen technology, in particular the increased screen sizes which have become possible, mean that a notebook's own screen can be used as a primary display at a workstation, instead of for example a CRT monitor or another form of substantially non-portable display. However, the keyboard and mouse solutions of the notebook do not meet the current requirements for primary workstation input devices. When a notebook screen is used in a primary workstation context, external input devices must be used. Thus for example, the notebook computer is opened up in order to be able to view its screen and a separate primary workstation keyboard is employed as illustrated schematically in Figure 1. The keyboard may be connected to the notebook and/or other elements comprising the primary workstation by, for example, cables, infrared links, or the like. However, when the separate keyboard is disposed in front of the notebook in this manner, the distance between the user and the notebook screen is longer than is desirable for optimum viewing of the screen.

It is an object of the present invention to provide a means of achieving the optimum view distance between a notebook screen and a user employing a separate keyboard.

According to one aspect of the present invention there is provided a notebook computer comprising a body portion with a screen portion operatively connected thereto, wherein the screen portion is positionable relative to the body portion

such that it can be used in conjunction with a separate keyboard disposed at a distance from the screen portion corresponding to the optimum viewing distance for a user of the separate keyboard and closer to the screen portion than the depth of the body portion.

According to another aspect of the present invention there is provided a notebook computer comprising a body portion with a screen portion operatively connected thereto, wherein the screen portion is pivotable between a first position in which the notebook computer is closed, a second position in which the screen portion has been rotated through an angle of the order of 90° relative to the first position, and a third position in which the screen has been rotated through an angle of the order of 270° relative to the first position.

According to yet another aspect of the present invention there is provided a notebook computer comprising a body portion with a screen portion operatively connected thereto, wherein the screen is disconnectibly mounted to a back edge of the body portion and pivotable thereat between a first position in which the notebook computer is closed and a second position in which the screen has been rotated through an angle of the order of 90° relative to the first position, and wherein the screen is alternatively mountable to a front edge of the body portion in an orientation such that it extends substantially parallel to the second position.

Embodiments of the invention will now be described with reference to the accompanying drawings, in which:

Figure 1 illustrates, schematically a conventional notebook computer being used in combination with a separate keyboard;

Figure 2 illustrates schematically a notebook computer according to one embodiment of the present invention being used in combination with a separate keyboard;

Explore Litigation Insights

Docket Alarm provides insights to develop a more informed litigation strategy and the peace of mind of knowing you're on top of things.

Real-Time Litigation Alerts



Keep your litigation team up-to-date with **real-time alerts** and advanced team management tools built for the enterprise, all while greatly reducing PACER spend.

Our comprehensive service means we can handle Federal, State, and Administrative courts across the country.

Advanced Docket Research



With over 230 million records, Docket Alarm's cloud-native docket research platform finds what other services can't. Coverage includes Federal, State, plus PTAB, TTAB, ITC and NLRB decisions, all in one place.

Identify arguments that have been successful in the past with full text, pinpoint searching. Link to case law cited within any court document via Fastcase.

Analytics At Your Fingertips



Learn what happened the last time a particular judge, opposing counsel or company faced cases similar to yours.

Advanced out-of-the-box PTAB and TTAB analytics are always at your fingertips.

API

Docket Alarm offers a powerful API (application programming interface) to developers that want to integrate case filings into their apps.

LAW FIRMS

Build custom dashboards for your attorneys and clients with live data direct from the court.

Automate many repetitive legal tasks like conflict checks, document management, and marketing.

FINANCIAL INSTITUTIONS

Litigation and bankruptcy checks for companies and debtors.

E-DISCOVERY AND LEGAL VENDORS

Sync your system to PACER to automate legal marketing.