



[54] SERVER SYSTEM AND METHOD FOR MODIFYING A CURSOR IMAGE

[75] Inventors: James Samuel Rosen, New York, N.Y.; Thomas A. Schmitter, Cambridge, Mass.; Mark S. Hall, South Orange, N.J.

[73] Assignee: Comet Systems, Inc., New York, N.Y.

[\*] Notice: This patent issued on a continued prosecution application filed under 37 CFR 1.53(d), and is subject to the twenty year patent term provisions of 35 U.S.C. 154(a)(2).

[21] Appl. No.: 08/882,580

[22] Filed: Jun. 25, 1997

[51] Int. Cl.<sup>6</sup> ..... G06F 3/14

[52] U.S. Cl. .... 345/339; 345/334; 345/145; 707/513

[58] Field of Search ..... 345/302, 328, 345/329, 331, 348, 145, 339, 334, 335, 345; 395/200.33, 200.47, 200.48, 200.49

[56] References Cited

U.S. PATENT DOCUMENTS

4,672,575	6/1987	Stephens	364/900
4,841,291	6/1989	Swix et al.	340/725
4,984,152	1/1991	Muller	364/200
5,157,768	10/1992	Hoerber et al.	395/157
5,179,656	1/1993	Lisle	395/159
5,347,628	9/1994	Brewer et al.	395/159

5,544,295	8/1996	Capps	395/152
5,559,943	9/1996	Cyr et al.	395/155
5,572,643	11/1996	Judson	395/793
5,596,694	1/1997	Capps	395/152
5,710,897	1/1998	Schneider	345/334
5,737,619	4/1998	Judson	395/761
5,740,549	4/1998	Reilly et al.	705/14
5,801,698	9/1998	Lection et al.	345/347

OTHER PUBLICATIONS

M. Brown, "WWW Plug-In Companions", 1996, pp. 14-18.

The Java Language Environment—A White Paper Goshing et al., May 1995, pp. 6-64.

Primary Examiner—Raymond J. Bayerl

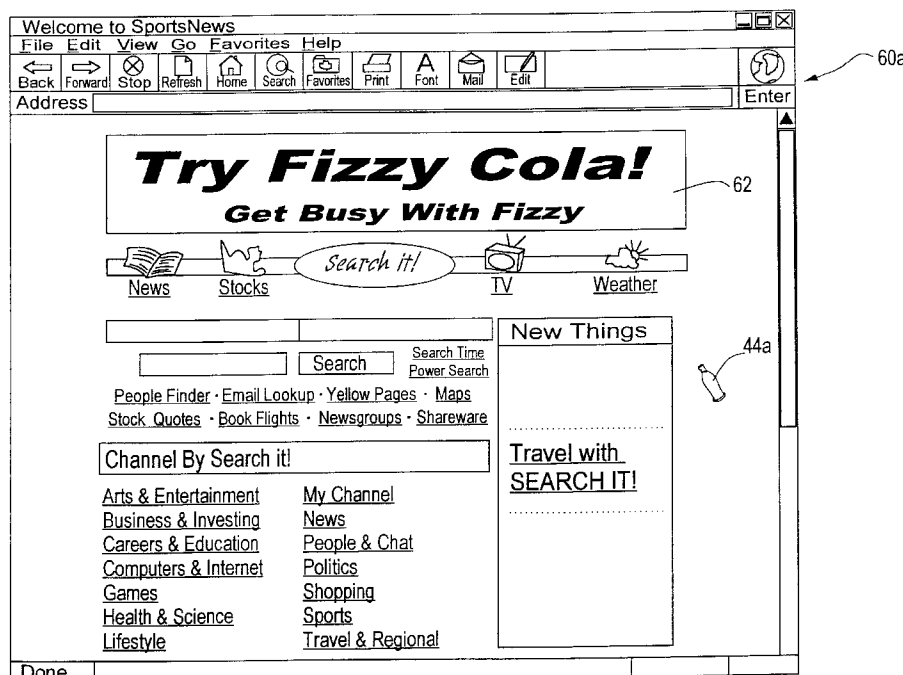
Assistant Examiner—Chadwick A. Jackson

Attorney, Agent, or Firm—Weingarten, Schurgin, Gagnebin & Hayes LLP

[57] ABSTRACT

A system for modifying a cursor image, as displayed on a video monitor of a remote terminal, to a specific image having a desired shape and appearance. The system stores cursor image data corresponding to the specific image, and a cursor display code. The cursor display code contains information in response to which the cursor image is modified to the specific image. A server computer transmits specified information to the remote terminal. The information includes at least one cursor display instruction. The cursor display instruction is operable to modify, in conjunction with the cursor information and the cursor image data, a cursor image displayed by a display of the remote terminal in the shape and appearance of the specific image.

75 Claims, 9 Drawing Sheets



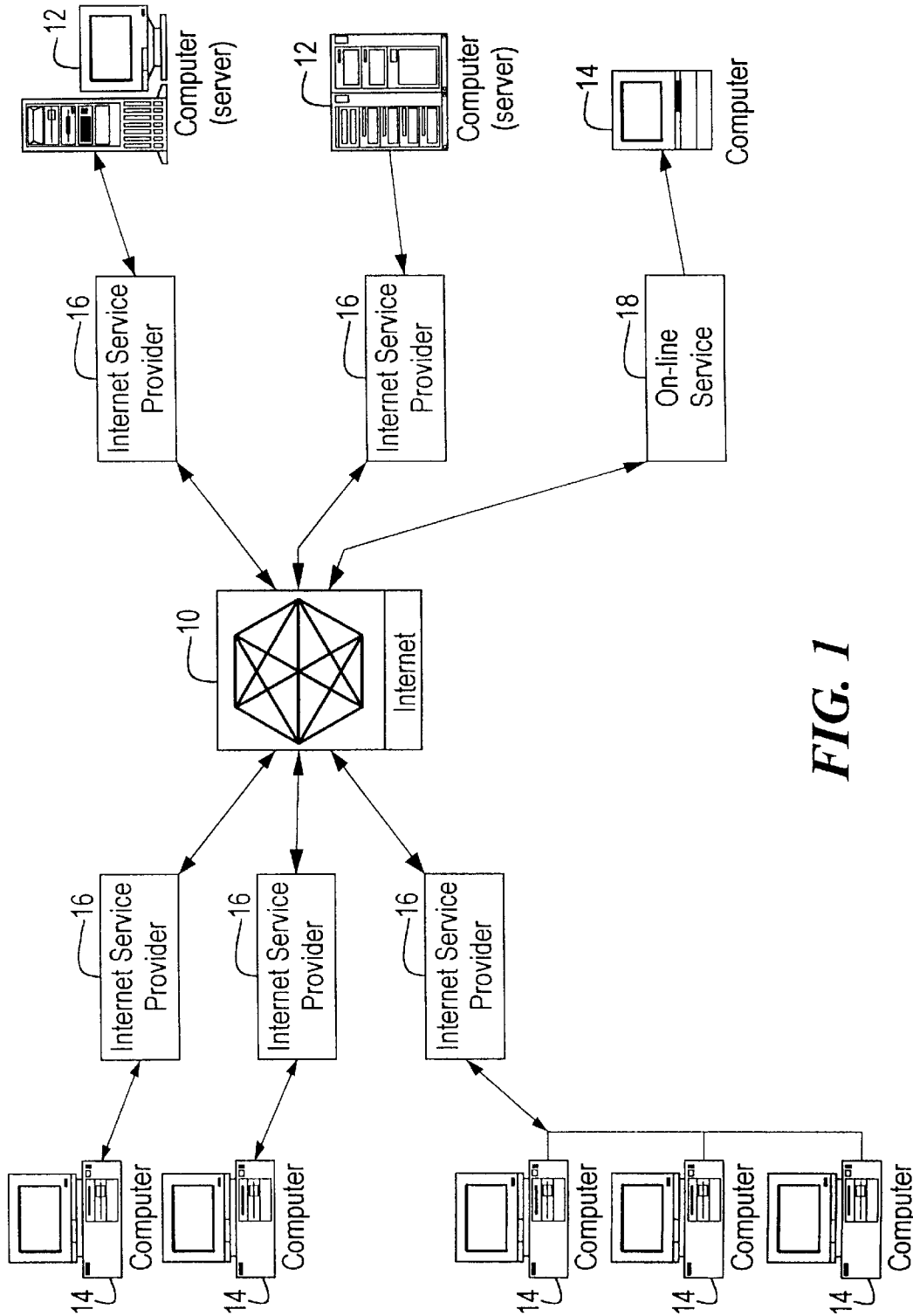


FIG. 1

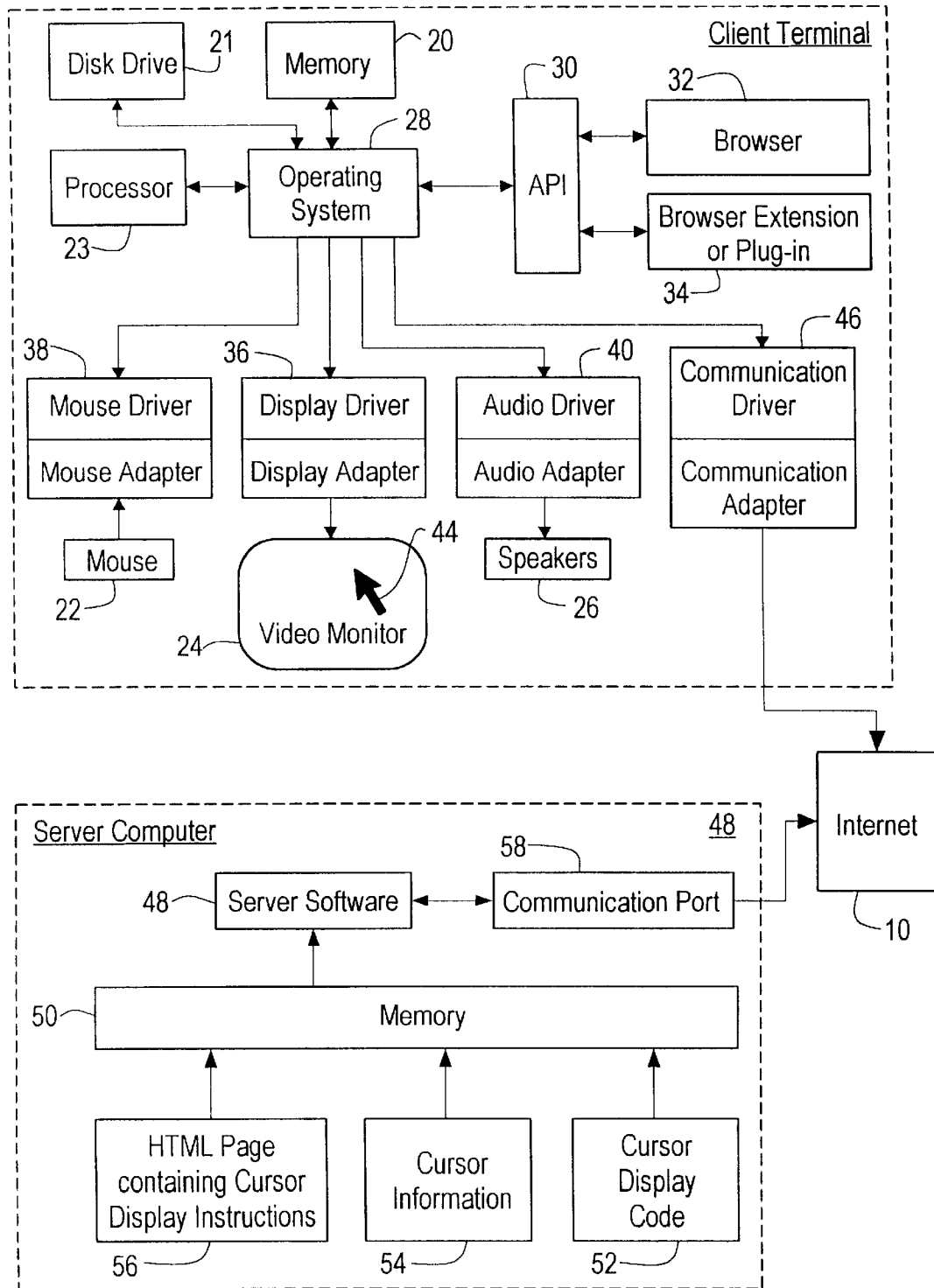


FIG. 2

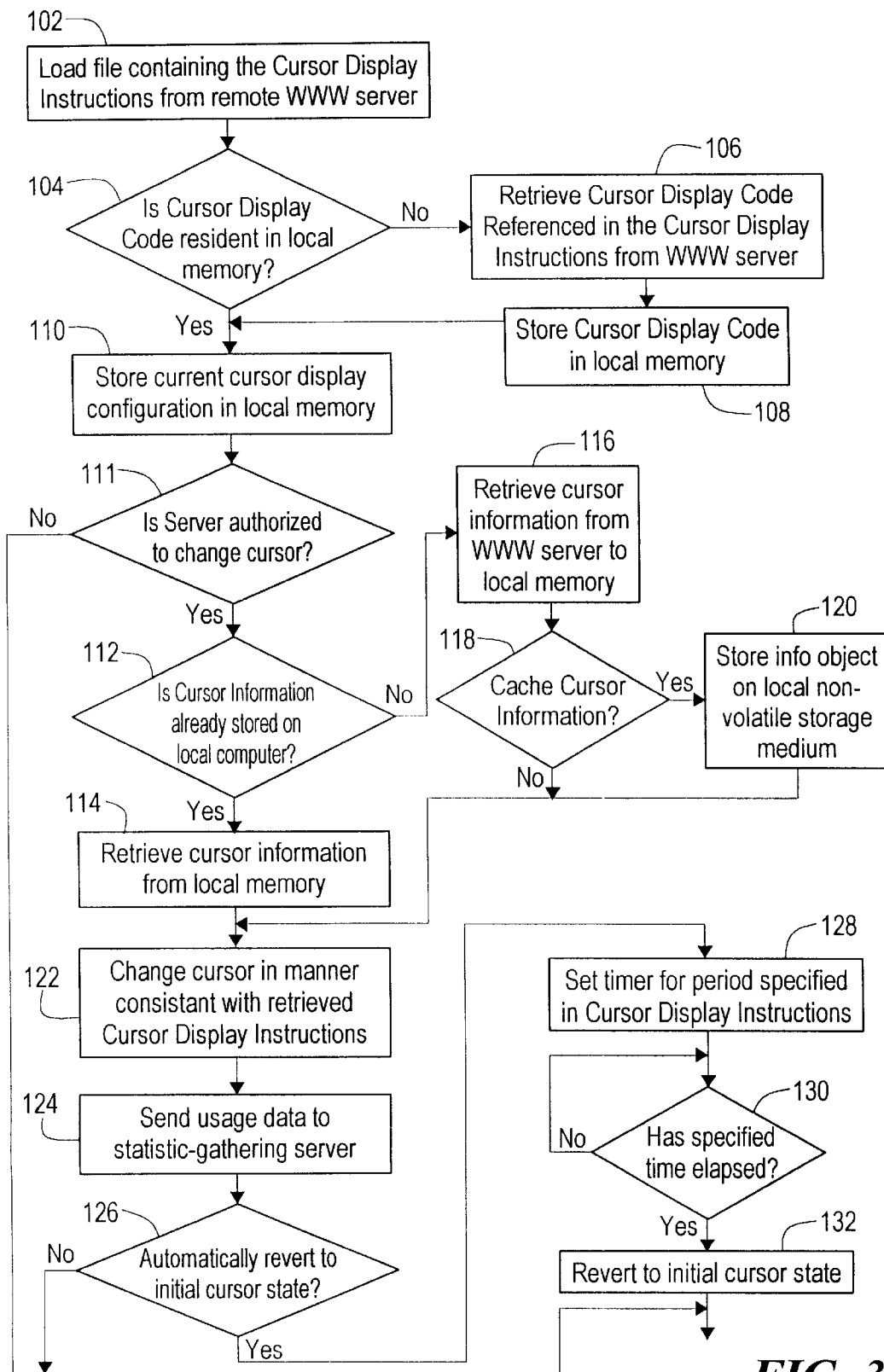


FIG. 3

```
<OBJECT
  202.ID=ccl
  203.TYPE="application/x-oleobject"
  204.CLASSID="clsid:CB005660-D0C7-11cf-B7F6-00AA00A3F278"
  205.CODEBASE="http://cometsystems.com/controls/cc.cab#ver=4,70,
    0,1122"
  206.<PARAM NAME="CursorType" VALUE="1"
  207.<PARAM NAME="CursorImage"
    VALUE="http://cometsystems.com/library/images/acme.cur">
  208.<PARAM NAME="Counter" VALUE="http://
    cometsystems.com/accounting">
  209.<PARAM NAME="DisplayDuration" VALUE="5">
  210.<PARAM NAME="CacheCursor" VALUE="1">
  211.<PARAM NAME="ServerSignature" VALUE="54F5254A23BD988AB54">
  212.<PARAM NAME="DormantDelay" VALUE="600">
  213.<PARAM NAME="CursorTrajectoryMap" VALUE="http://
    cometsystems.com/maps/trajectory">
  214.<PARAM NAME="CursorPositionMap" VALUE="http://
    cometsystems.com/maps/position">
  215.<PARAM NAME="CursorVelocityMap"
    VALUE="http://cometsystems.com/maps/velocity">
  216.<PARAM NAME="CursorPositionMap" VALUE="http://
    cometsystems.com/maps/velocity">
  217.<PARAM NAME="CursorButtonMap" VALUE="http://
    cometsystems.com/maps/buttonstate">
  218.<PARAM NAME="ContentType" VALUE="5">
  219.<PARAM NAME="PriorityLevel" VALUE="1">
  220.<PARAM NAME="StreamBufferSize" VALUE="0">
  221.<PARAM NAME="SatelliteImage"
    VALUE="http://cometsystems.com/library/images/acmesat.bmp">
  222.<PARAM NAME="SatelliteXDisplacement" VALUE="-50">
  223.<PARAM NAME="SatelliteYDisplacement" VALUE="50">
  224.<PARAM NAME="ExtraDisplayParameters"
    VALUE="http://cometsystems.com/library/params/acme.prm">
</OBJECT>
```

**FIG. 4**

# Explore Litigation Insights

Docket Alarm provides insights to develop a more informed litigation strategy and the peace of mind of knowing you're on top of things.

## Real-Time Litigation Alerts



Keep your litigation team up-to-date with **real-time alerts** and advanced team management tools built for the enterprise, all while greatly reducing PACER spend.

Our comprehensive service means we can handle Federal, State, and Administrative courts across the country.

## Advanced Docket Research



With over 230 million records, Docket Alarm's cloud-native docket research platform finds what other services can't. Coverage includes Federal, State, plus PTAB, TTAB, ITC and NLRB decisions, all in one place.

Identify arguments that have been successful in the past with full text, pinpoint searching. Link to case law cited within any court document via Fastcase.

## Analytics At Your Fingertips



Learn what happened the last time a particular judge, opposing counsel or company faced cases similar to yours.

Advanced out-of-the-box PTAB and TTAB analytics are always at your fingertips.

## API

Docket Alarm offers a powerful API (application programming interface) to developers that want to integrate case filings into their apps.

## LAW FIRMS

Build custom dashboards for your attorneys and clients with live data direct from the court.

Automate many repetitive legal tasks like conflict checks, document management, and marketing.

## FINANCIAL INSTITUTIONS

Litigation and bankruptcy checks for companies and debtors.

## E-DISCOVERY AND LEGAL VENDORS

Sync your system to PACER to automate legal marketing.