

[54] **POP-UP HELP SYSTEM FOR A COMPUTER GRAPHICAL USER INTERFACE**

Primary Examiner—A. Katbab
Attorney, Agent, or Firm—Knobbe, Martens, Olson & Bear LLP

[75] **Inventor:** Chris Crawford, Fort Worth, Tex.

[57] **ABSTRACT**

[73] **Assignee:** AST Research, Inc., Irvine, Calif.

A system for implementing a pop-up help system for a computer graphical user interface is disclosed. In a departure from the art, the pop-up help system provides help information on graphical display elements (GDEs), such as icons and text instructions, in the form of a help window that is not character or format limited and that is displayed when the associated GDE is selected. The pop-up help system also allows direct access to additional help information and provides for the display of graphics and the execution of multimedia objects. The pop-up help system comprises a GDE (a "help window"), which is displayed when the mouse pointer is moved over a GDE associated therewith. The help window comprises information regarding the associated GDE and may comprise multimedia objects or user activated buttons for accessing additional help information or for performing other actions. The help window is displayed until the neither the help window or GDE are selected and a user-specified time period has elapsed.

[21] **Appl. No.:** 538,017

[22] **Filed:** Oct. 2, 1995

[51] **Int. Cl.⁶** **G06F 3/00**

[52] **U.S. Cl.** **345/338**

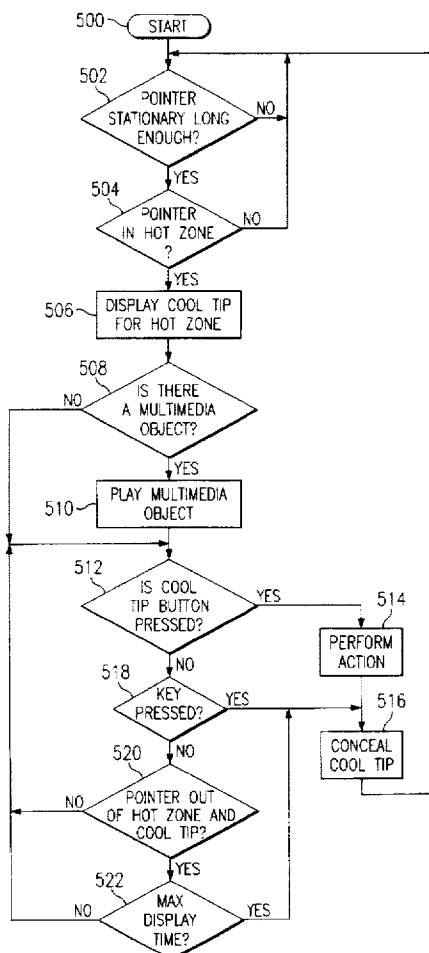
[58] **Field of Search** 395/338, 336, 395/353, 347

[56] **References Cited**

U.S. PATENT DOCUMENTS

4,789,962	12/1988	Berry et al.	395/338
5,155,806	10/1992	Hoerber et al.	395/338
5,287,448	2/1994	Nicol et al.	395/338 X
5,434,965	7/1995	Matheny et al.	395/338
5,442,687	8/1995	Miller	379/100
5,471,575	11/1995	Giansante	395/338 X
5,483,632	1/1996	Kuwamoto et al.	395/338
5,546,521	8/1996	Martinez	395/338

30 Claims, 4 Drawing Sheets



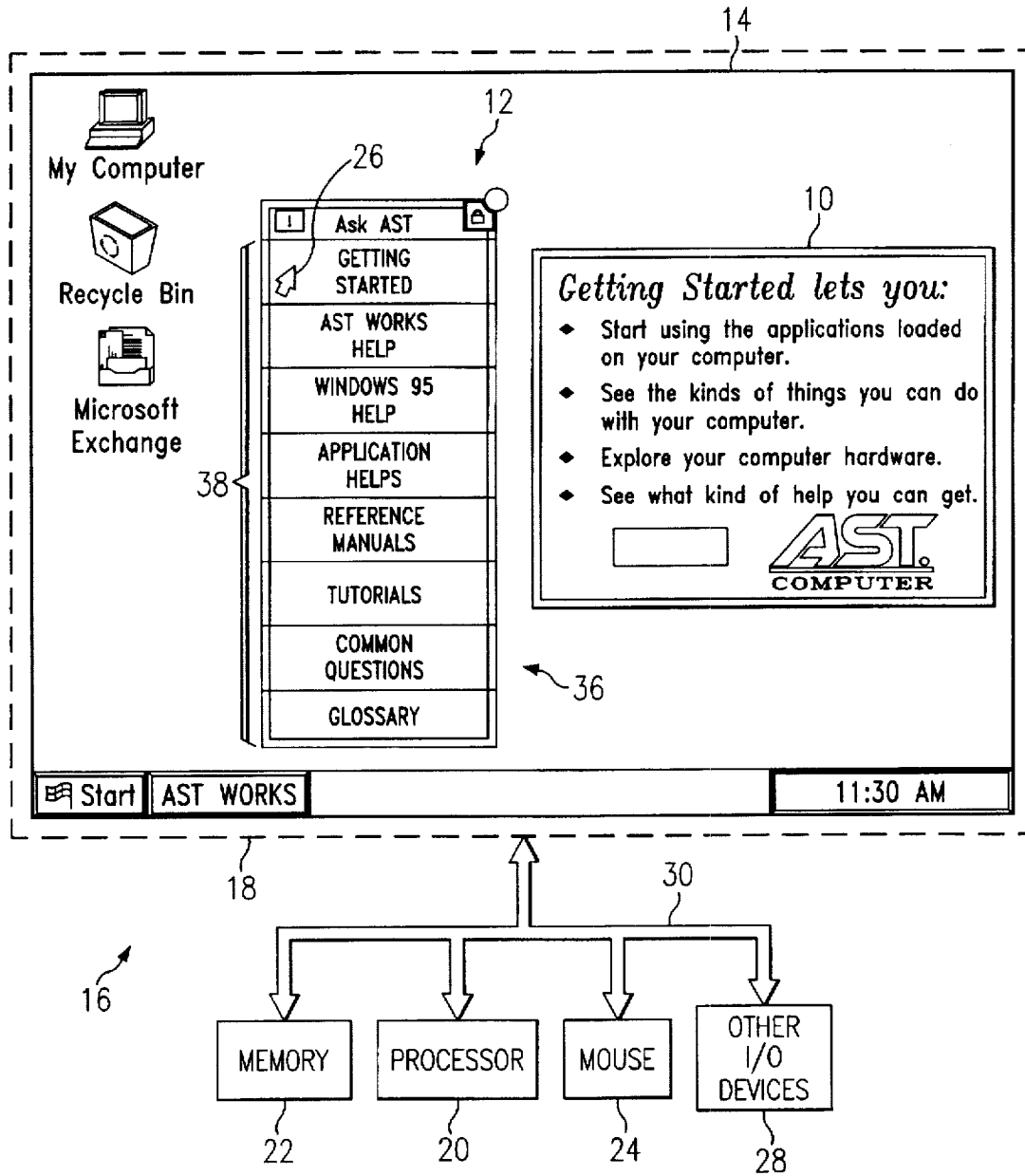


FIG. 1

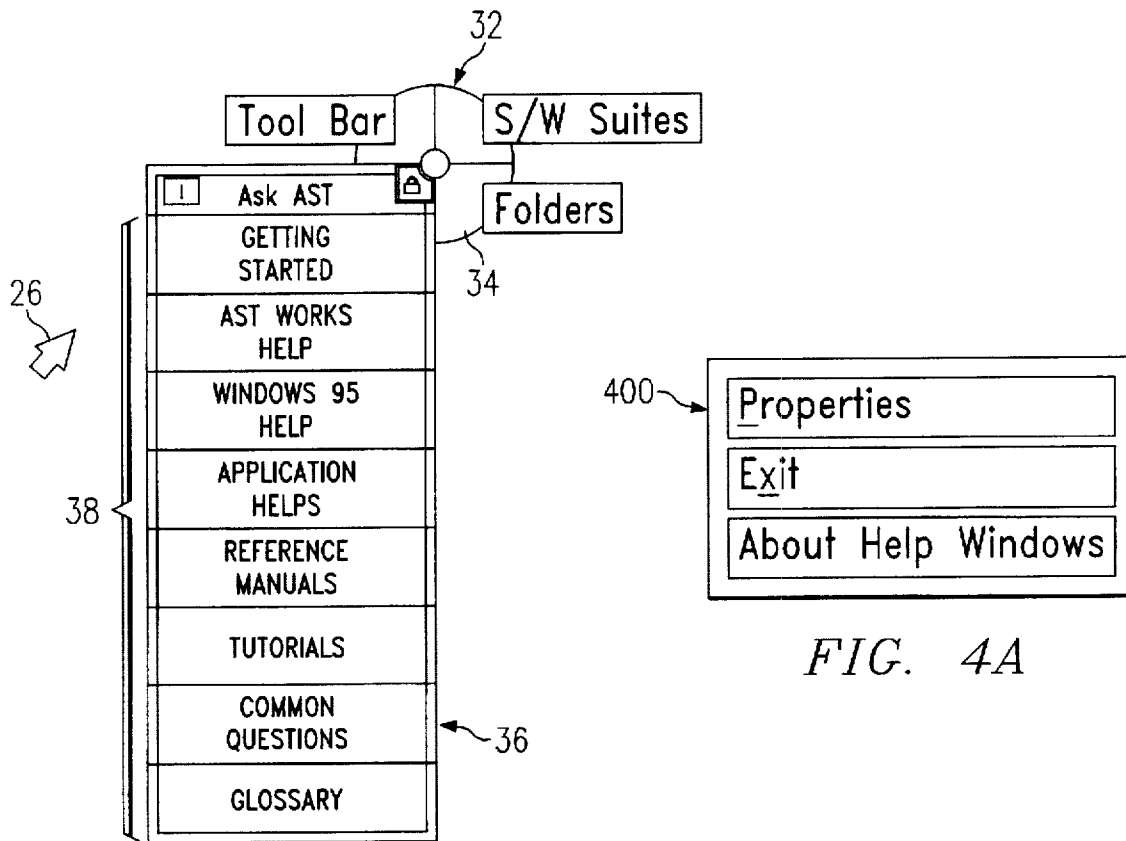


FIG. 2

FIG. 4A

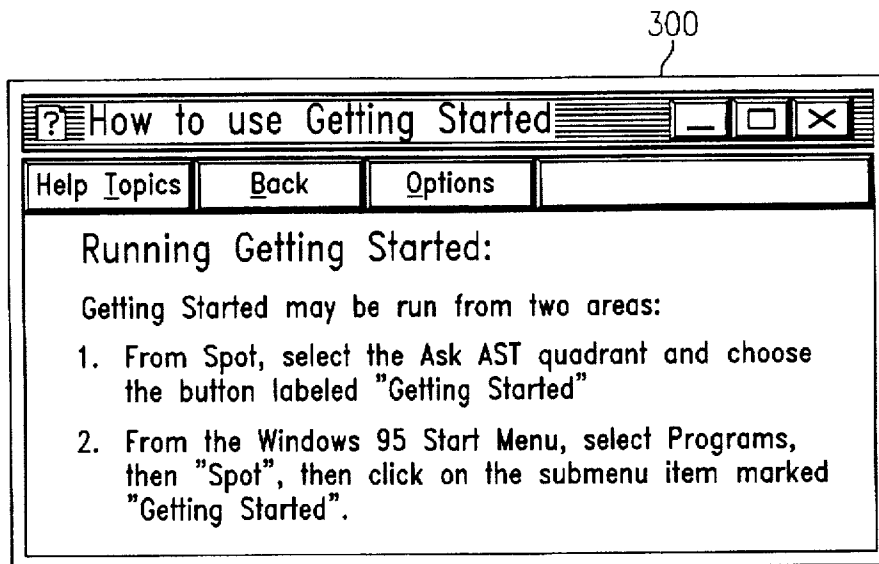


FIG. 3

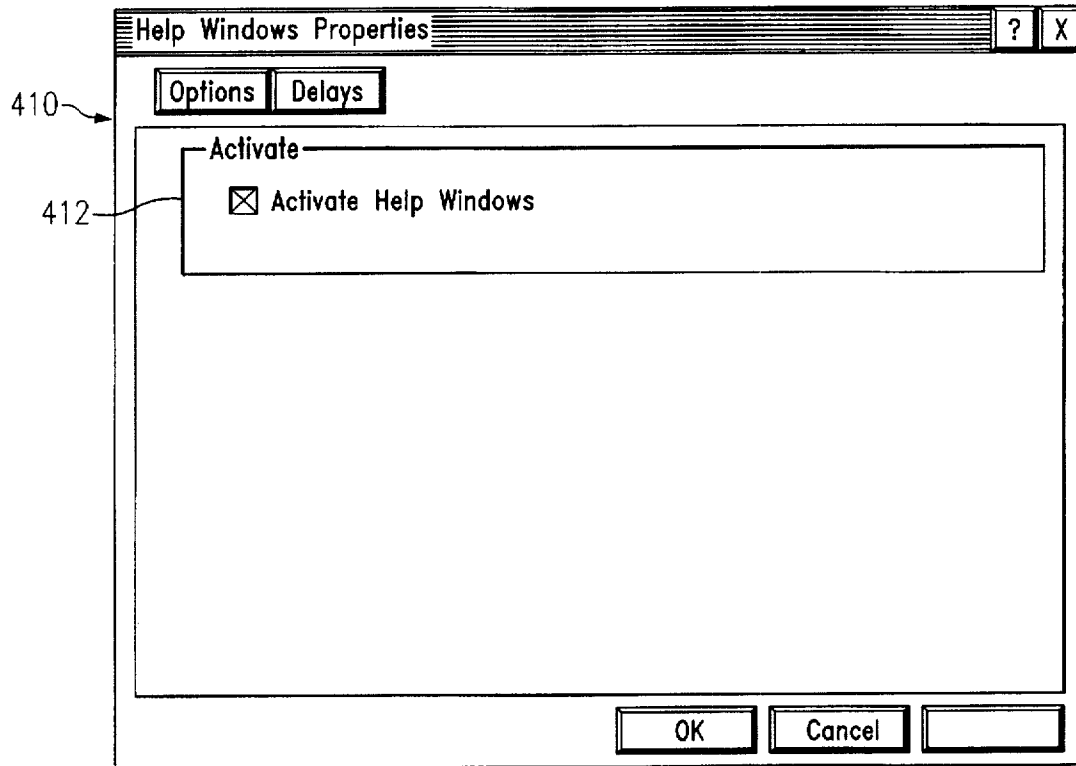


FIG. 4B

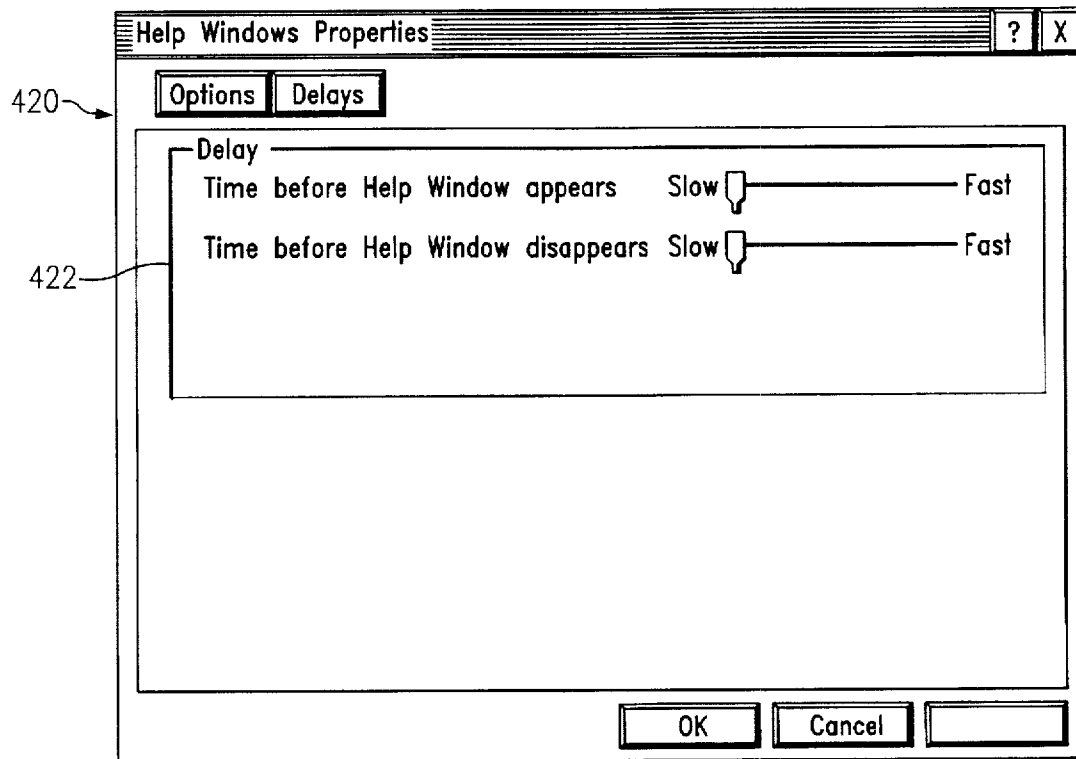


FIG. 4C

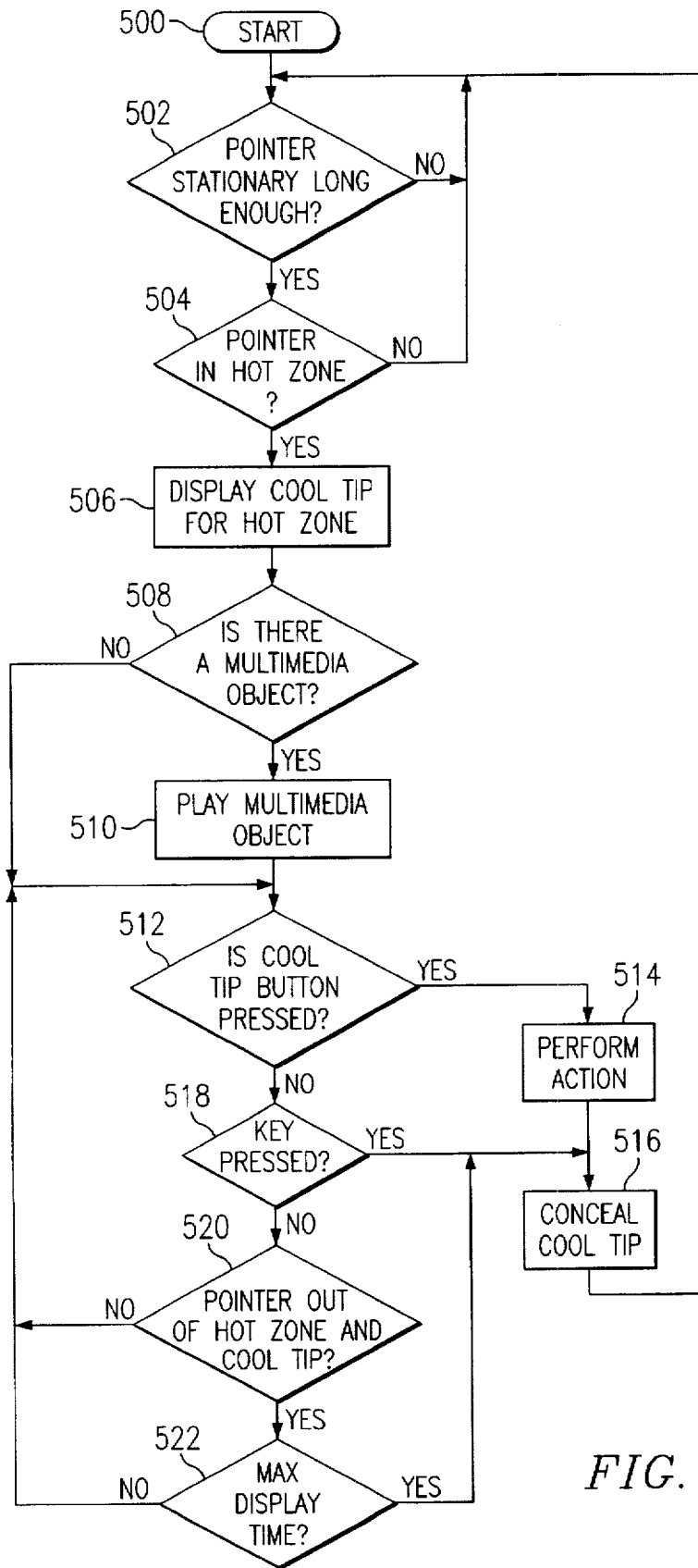


FIG. 5

Explore Litigation Insights

Docket Alarm provides insights to develop a more informed litigation strategy and the peace of mind of knowing you're on top of things.

Real-Time Litigation Alerts



Keep your litigation team up-to-date with **real-time alerts** and advanced team management tools built for the enterprise, all while greatly reducing PACER spend.

Our comprehensive service means we can handle Federal, State, and Administrative courts across the country.

Advanced Docket Research



With over 230 million records, Docket Alarm's cloud-native docket research platform finds what other services can't. Coverage includes Federal, State, plus PTAB, TTAB, ITC and NLRB decisions, all in one place.

Identify arguments that have been successful in the past with full text, pinpoint searching. Link to case law cited within any court document via Fastcase.

Analytics At Your Fingertips



Learn what happened the last time a particular judge, opposing counsel or company faced cases similar to yours.

Advanced out-of-the-box PTAB and TTAB analytics are always at your fingertips.

API

Docket Alarm offers a powerful API (application programming interface) to developers that want to integrate case filings into their apps.

LAW FIRMS

Build custom dashboards for your attorneys and clients with live data direct from the court.

Automate many repetitive legal tasks like conflict checks, document management, and marketing.

FINANCIAL INSTITUTIONS

Litigation and bankruptcy checks for companies and debtors.

E-DISCOVERY AND LEGAL VENDORS

Sync your system to PACER to automate legal marketing.