



US005243528A

# United States Patent [19]

[11] Patent Number: **5,243,528**

Lefebvre

[45] Date of Patent: **Sep. 7, 1993**

[54] **LAND VEHICLE NAVIGATION APPARATUS WITH VISUAL DISPLAY**

[75] Inventor: **Rebecca K. Lefebvre**, Arlington Heights, Ill.

[73] Assignee: **Motorola, Inc.**, Schaumburg, Ill.

[21] Appl. No.: **581,495**

[22] Filed: **Sep. 12, 1990**

[51] Int. Cl.<sup>5</sup> ..... **G06F 15/50**

[52] U.S. Cl. .... **364/449; 364/444; 340/990; 340/995**

[58] Field of Search ..... **340/988, 990, 995, 996, 340/701, 703, 721, 729; 364/449, 444, 443, 446, 424.01, 424.02; 395/103, 127, 128, 135, 138, 139**

[56] **References Cited**

**U.S. PATENT DOCUMENTS**

4,511,973	4/1985	Miura et al. ....	364/449
4,570,227	2/1986	Tachi et al. ....	364/444
4,635,202	1/1987	Tsujii et al. ....	364/449
4,679,147	7/1987	Tsujii et al. ....	364/449
4,716,404	12/1987	Tabata et al. ....	340/995 X
4,757,455	7/1988	Tsunoda et al. ....	364/449
4,761,742	8/1988	Hanabusa et al. ....	364/443
4,763,270	8/1988	Itoh et al. ....	364/449
4,774,672	9/1988	Tsunoda et al. ....	364/449
4,782,447	3/1986	Ueno et al. ....	364/449
4,796,189	1/1989	Nakayama et al. ....	364/449
4,827,420	5/1989	Musa ....	364/449
4,896,154	1/1990	Factor et al. ....	340/995
4,897,792	1/1990	Hosoi ....	364/449
4,914,605	4/1990	Loughmiller, Jr. et al. ...	364/443 X
4,926,336	5/1990	Yamada ....	364/444
4,937,570	6/1990	Matsukawa et al. ....	340/995 X
4,937,752	6/1990	Nanba et al. ....	364/449
4,951,211	8/1990	De Villeroche ....	364/444
4,951,212	8/1990	Kurihara et al. ....	364/449

4,963,864	10/1990	Iihoshi et al. ....	364/449 X
4,974,170	11/1990	Bouve et al. ....	364/444 X
4,989,151	1/1991	Nuimura ....	364/449
4,992,947	2/1991	Nimura et al. ....	364/444
5,089,826	2/1992	Yano et al. ....	364/449 X

**OTHER PUBLICATIONS**

*Transportation for the Future*, "Automobile Navigation Technology: Where Is It Going?" by Robert L. Franch, May 24-25, 1988.

*Primary Examiner*—Vincent N. Trans

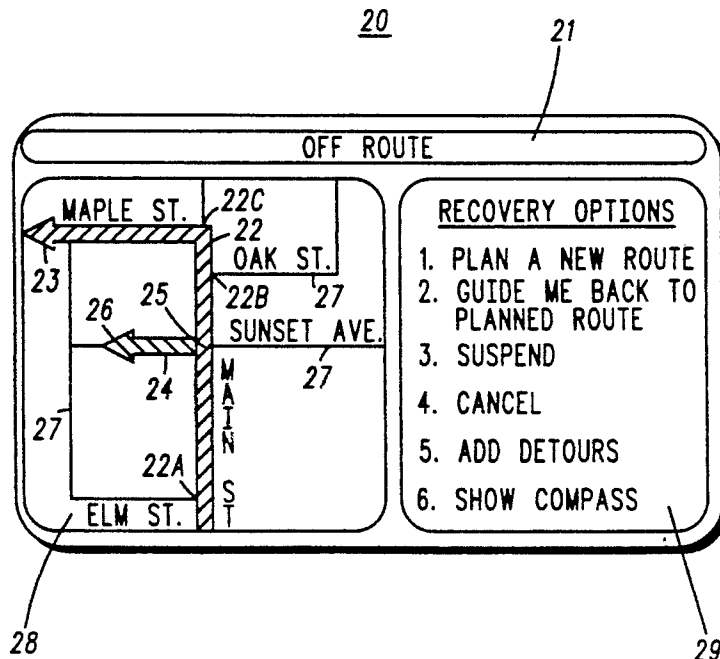
*Assistant Examiner*—Thomas S. Auchterlonie

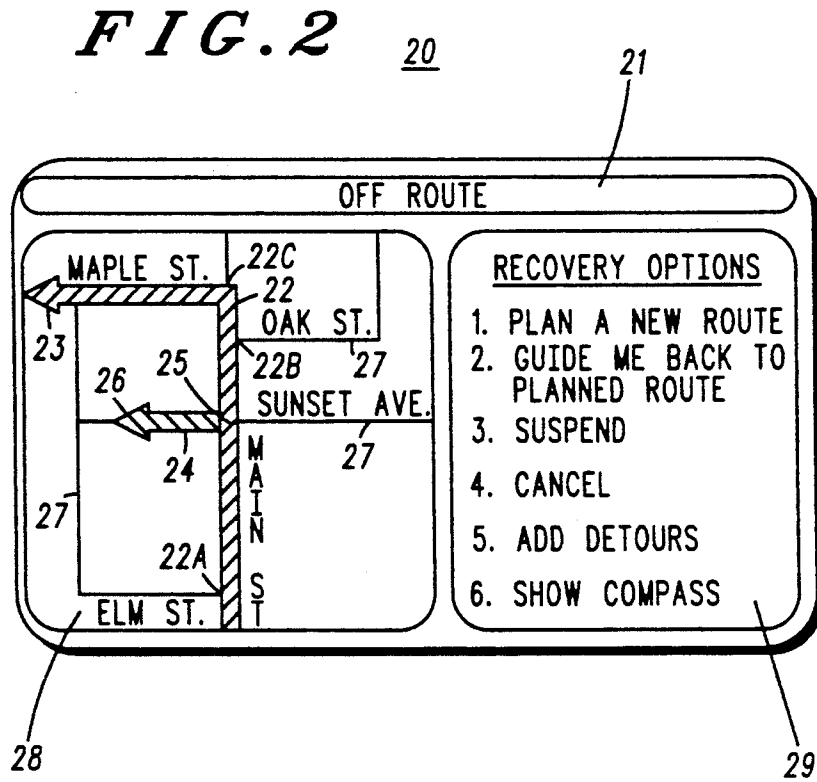
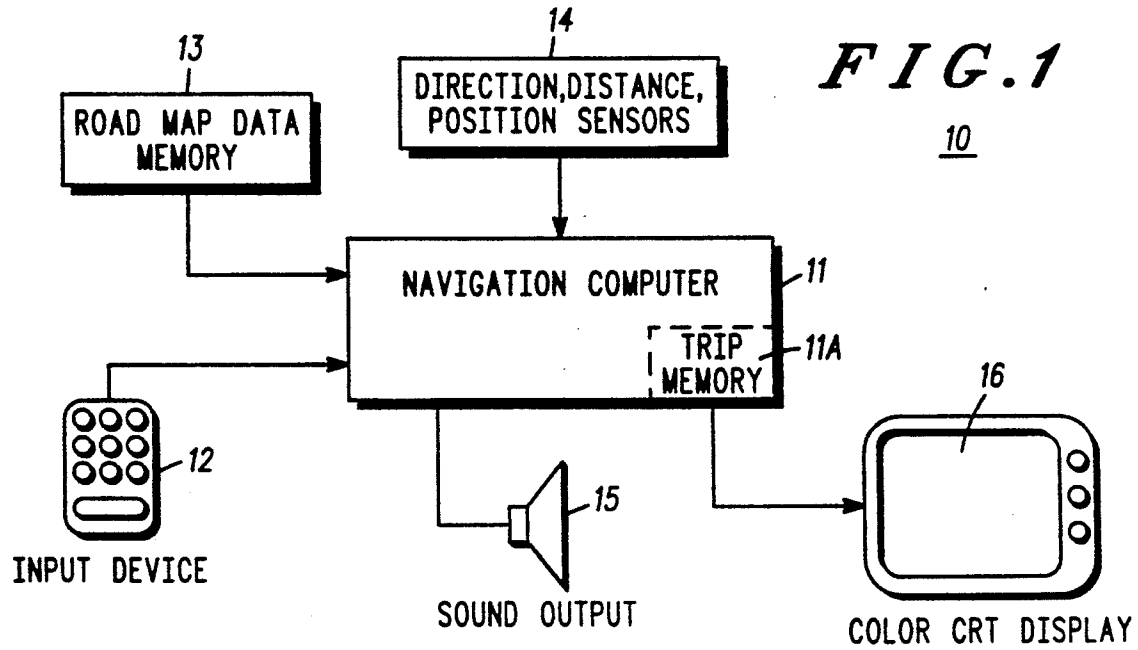
*Attorney, Agent, or Firm*—Phillip H. Melamed; John H. Moore

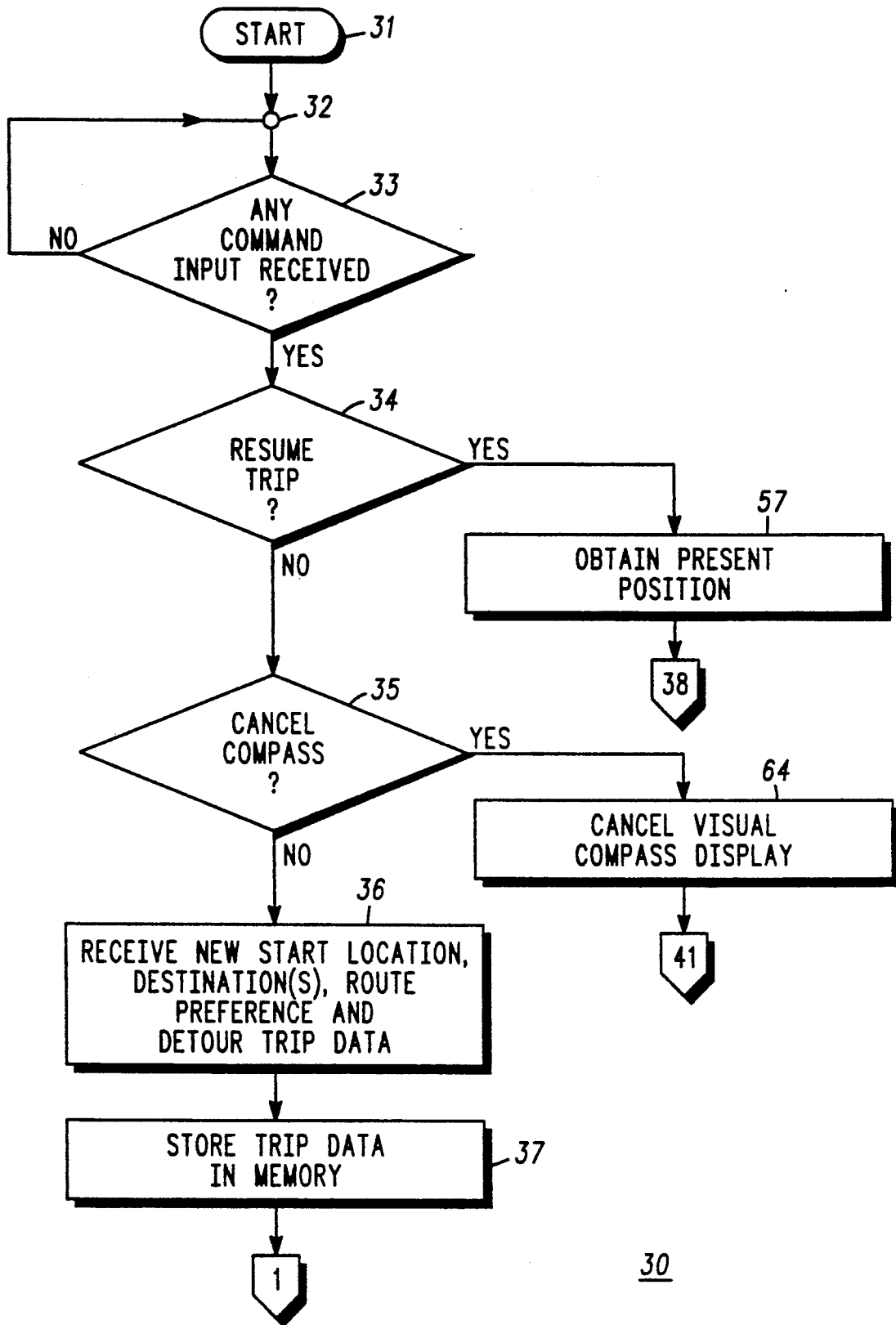
[57] **ABSTRACT**

Land vehicle navigation apparatus (10) with a visual display (16, 20) is provided. The apparatus provides a visual display of a calculated navigation route (22) with a visual indication (23) of the direction of desired travel along the navigation route. An off route map display portion (28) is provided which has the visual navigation route display (22) in one color and, in a second contrasting color, a visual display (24, 26) of actual vehicle travel. A separate additional feature is that an off route display (20) provides a visual display portion (29) of a plurality of operator selectable off route recovery options (1-6). Off route recovery means (12, 49-63) are provided such that the vehicle operator can implement the visually displayed recovery options. The result is a navigation system which visually provides vehicle navigation information to the vehicle operator in an improved minimal comprehension time format, and allows the vehicle operator to select for himself how to recover from an off route condition.

37 Claims, 4 Drawing Sheets







30

FIG. 3A

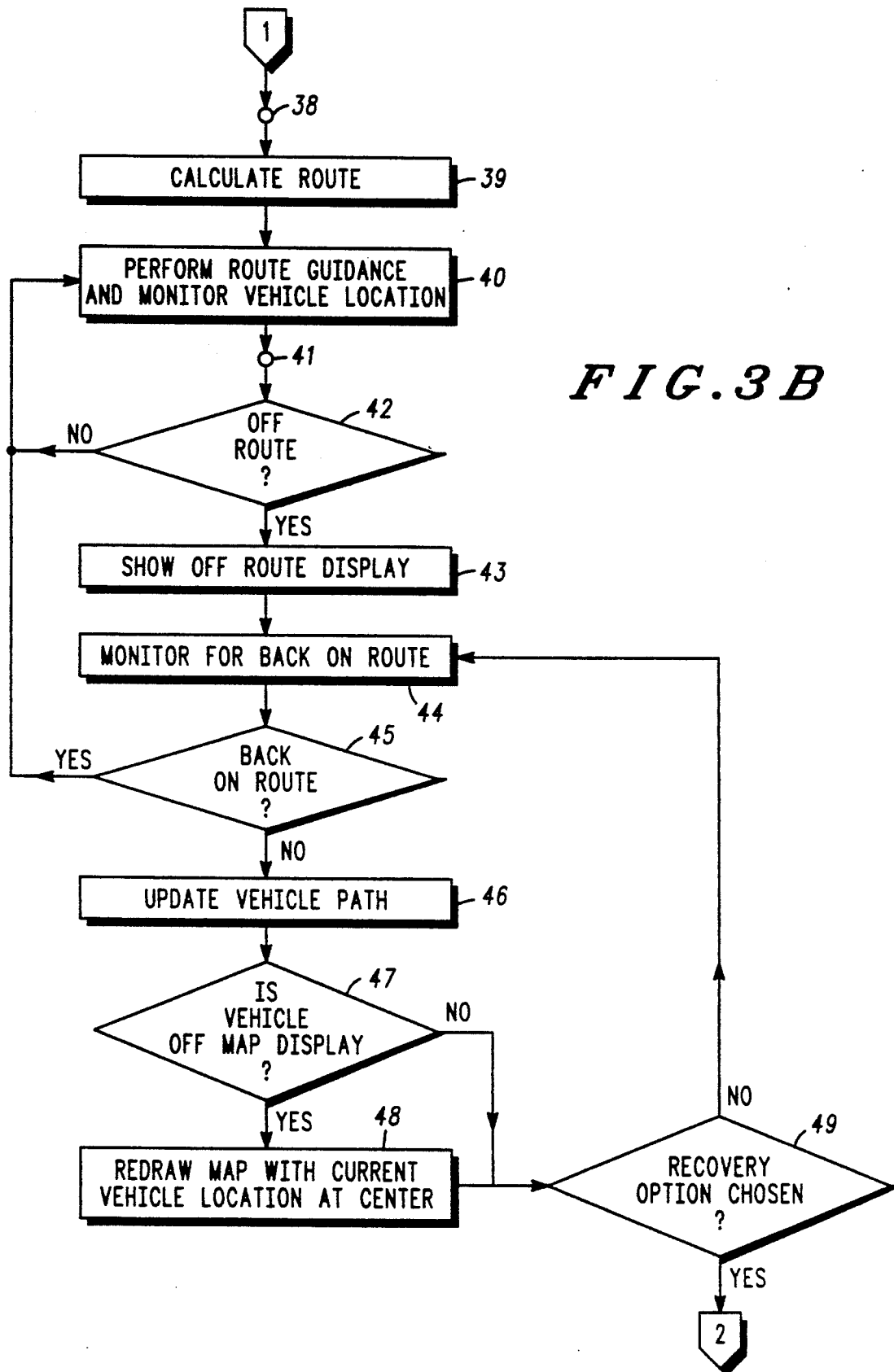


FIG. 3B

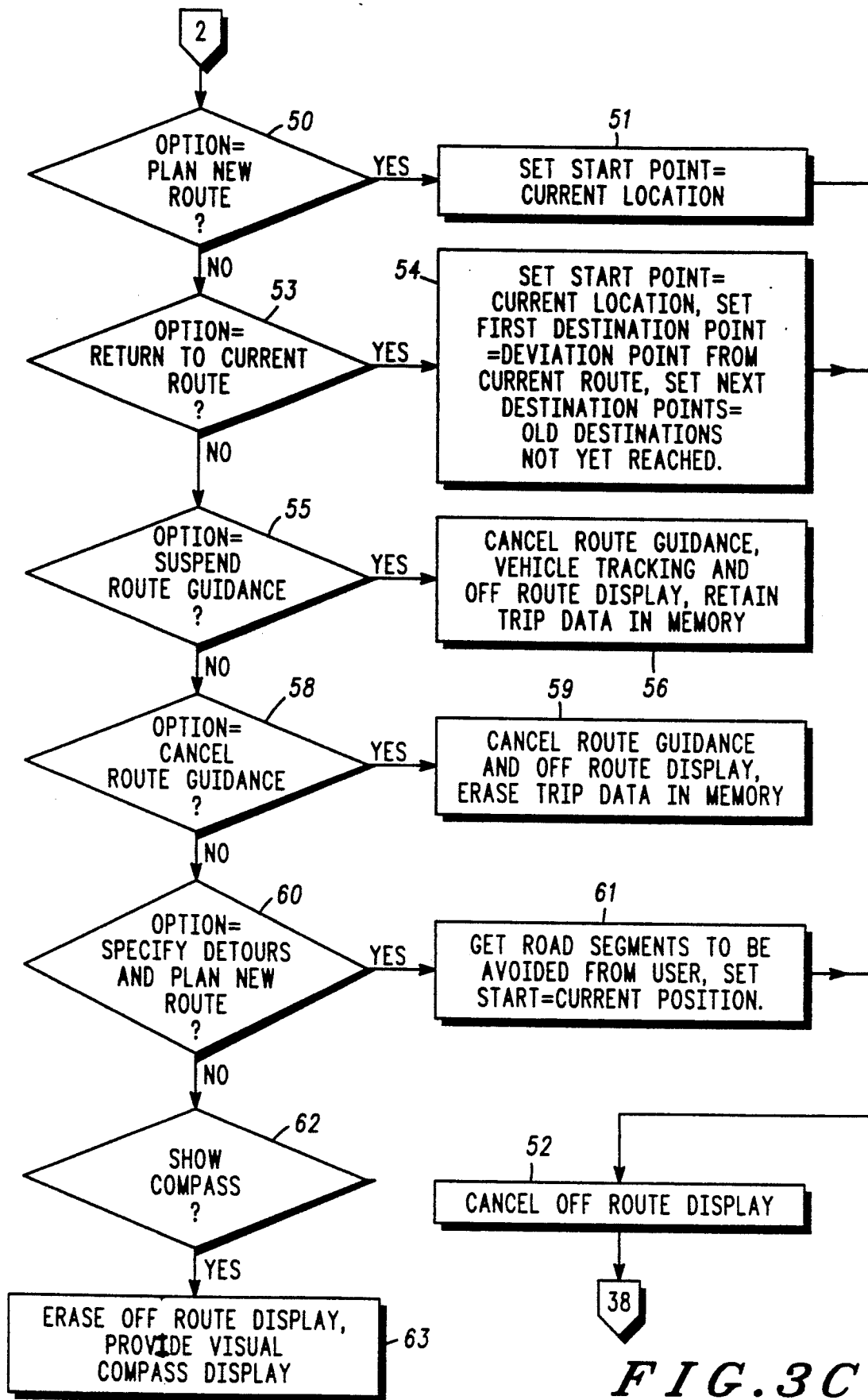


FIG. 3C

# Explore Litigation Insights

Docket Alarm provides insights to develop a more informed litigation strategy and the peace of mind of knowing you're on top of things.

## Real-Time Litigation Alerts



Keep your litigation team up-to-date with **real-time alerts** and advanced team management tools built for the enterprise, all while greatly reducing PACER spend.

Our comprehensive service means we can handle Federal, State, and Administrative courts across the country.

## Advanced Docket Research



With over 230 million records, Docket Alarm's cloud-native docket research platform finds what other services can't. Coverage includes Federal, State, plus PTAB, TTAB, ITC and NLRB decisions, all in one place.

Identify arguments that have been successful in the past with full text, pinpoint searching. Link to case law cited within any court document via Fastcase.

## Analytics At Your Fingertips



Learn what happened the last time a particular judge, opposing counsel or company faced cases similar to yours.

Advanced out-of-the-box PTAB and TTAB analytics are always at your fingertips.

## API

Docket Alarm offers a powerful API (application programming interface) to developers that want to integrate case filings into their apps.

## LAW FIRMS

Build custom dashboards for your attorneys and clients with live data direct from the court.

Automate many repetitive legal tasks like conflict checks, document management, and marketing.

## FINANCIAL INSTITUTIONS

Litigation and bankruptcy checks for companies and debtors.

## E-DISCOVERY AND LEGAL VENDORS

Sync your system to PACER to automate legal marketing.