



US008649971B2

(12) **United States Patent**
Machino

(10) **Patent No.:** **US 8,649,971 B2**
(45) **Date of Patent:** **Feb. 11, 2014**

(54) **NAVIGATION DEVICE**

(56)

References Cited

(75) Inventor: **Hiroshi Machino**, Tokyo (JP)

U.S. PATENT DOCUMENTS

(73) Assignee: **Mitsubishi Electric Corporation**,
Tokyo (JP)

(*) Notice: Subject to any disclaimer, the term of this
patent is extended or adjusted under 35
U.S.C. 154(b) by 530 days.

5,793,631	A	8/1998	Ito et al.	
5,926,118	A *	7/1999	Hayashida et al.	340/995.21
5,931,888	A	8/1999	Hiyokawa	
5,977,885	A	11/1999	Watanabe	
6,018,697	A *	1/2000	Morimoto et al.	701/411
6,154,703	A	11/2000	Nakai et al.	
2004/0044464	A1 *	3/2004	Sugiura et al.	701/200
2004/0210388	A1	10/2004	Sugiura	
2006/0167621	A1	7/2006	Dale	
2007/0106469	A1 *	5/2007	Ishizaki	701/211
2007/0143011	A1	6/2007	Sato	

(21) Appl. No.: **12/918,992**

(22) PCT Filed: **Jan. 14, 2009**

FOREIGN PATENT DOCUMENTS

(86) PCT No.: **PCT/JP2009/000108**

§ 371 (c)(1),
(2), (4) Date: **Aug. 23, 2010**

DE	10295465	T5	11/2004
DE	102004017196	A1	12/2004
EP	0777206	A1	6/1997
EP	0833292	A1	4/1998
JP	5-296775	A	11/1993

(87) PCT Pub. No.: **WO2009/122633**

PCT Pub. Date: **Oct. 8, 2009**

(Continued)

(65) **Prior Publication Data**

US 2011/0035148 A1 Feb. 10, 2011

Primary Examiner — Muhammad Shafi

(74) *Attorney, Agent, or Firm* — Birch, Stewart, Kolasch & Birch, LLP

(30) **Foreign Application Priority Data**

Apr. 2, 2008 (JP) 2008-096213

(57)

ABSTRACT

(51) **Int. Cl.**
G01C 21/00 (2006.01)
G08G 1/123 (2006.01)

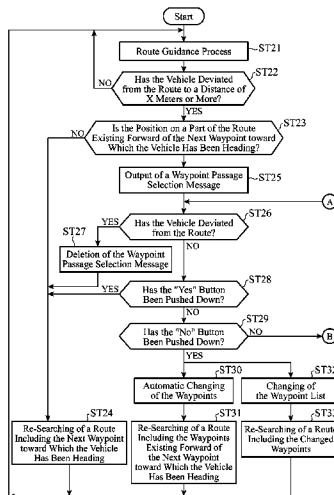
(52) **U.S. Cl.**
USPC **701/411; 340/995.2**

(58) **Field of Classification Search**
USPC 701/400–541, 31.1, 32.4, FOR. 123,
701/32.5, 32.6; 340/988–996, 995.27, 427,
340/476, 644, 5.31, 7.55, 12.27; 455/418,
455/456.1; 342/176, 374

A navigation device includes a route searching unit for searching for a whole route leading to a destination via waypoints set by a setting unit, a route guidance unit for carrying out route guidance according to the whole route, an output unit for outputting a message showing that a vehicle has deviated from a route leading to a first next waypoint toward which the vehicle has been heading when the route guidance unit determines that the vehicle has deviated from the route to a predetermined distance or more and is traveling along a route after the first next waypoint, and an input unit for inputting a command indicating whether or not to travel via the first next waypoint in response to the message outputted by the output unit.

See application file for complete search history.

19 Claims, 7 Drawing Sheets



(56)

References Cited

FOREIGN PATENT DOCUMENTS

JP 5-313574 A 11/1993
JP 6-66587 A 3/1994
JP 8-94370 A 4/1996
JP 9-152352 A 6/1997

JP 9-325041 A 12/1997
JP 11-14393 A 1/1999
JP 2000-193478 A 7/2000
JP 2000-337910 A 12/2000
JP 2003-166834 A 6/2003
JP 2007-132735 A 5/2007

* cited by examiner

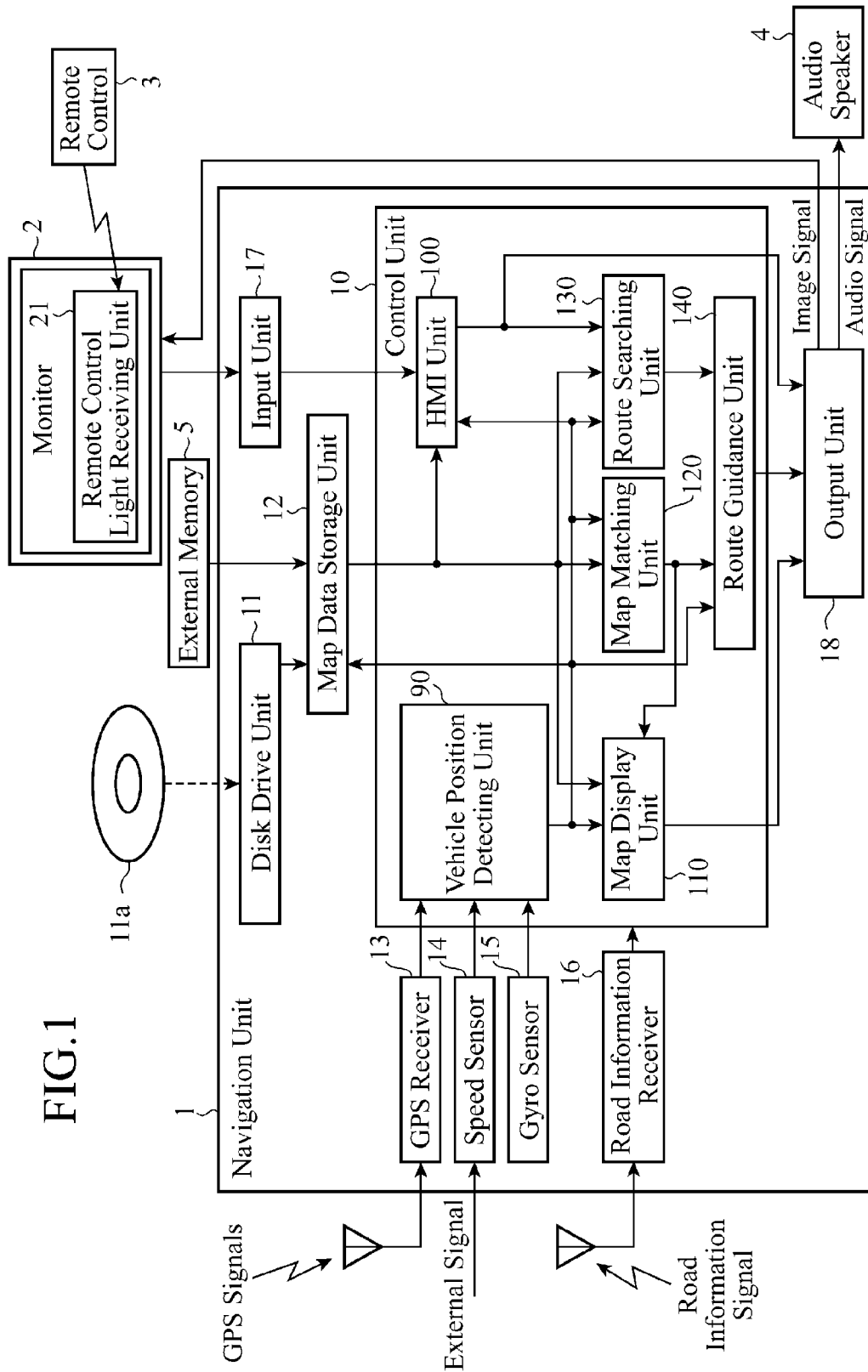


FIG. 1

FIG. 2

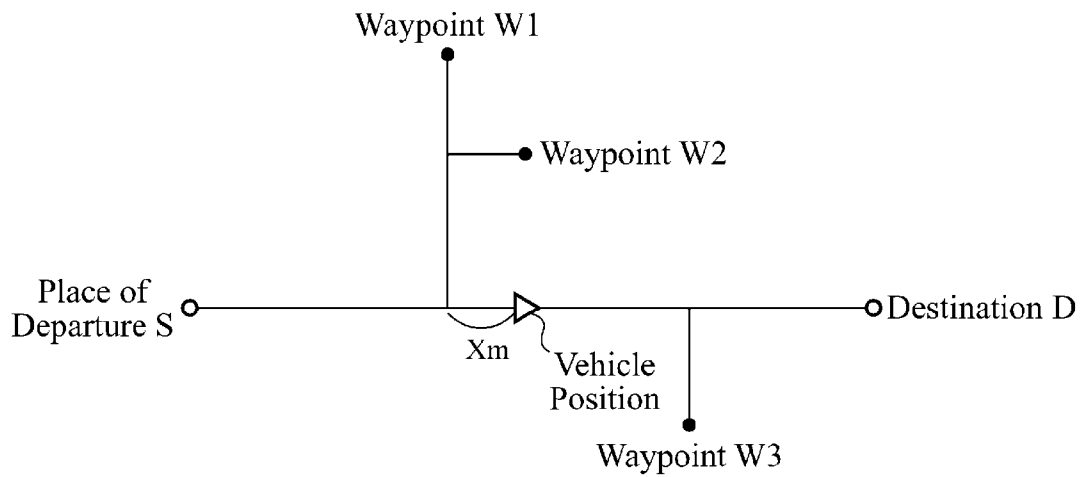
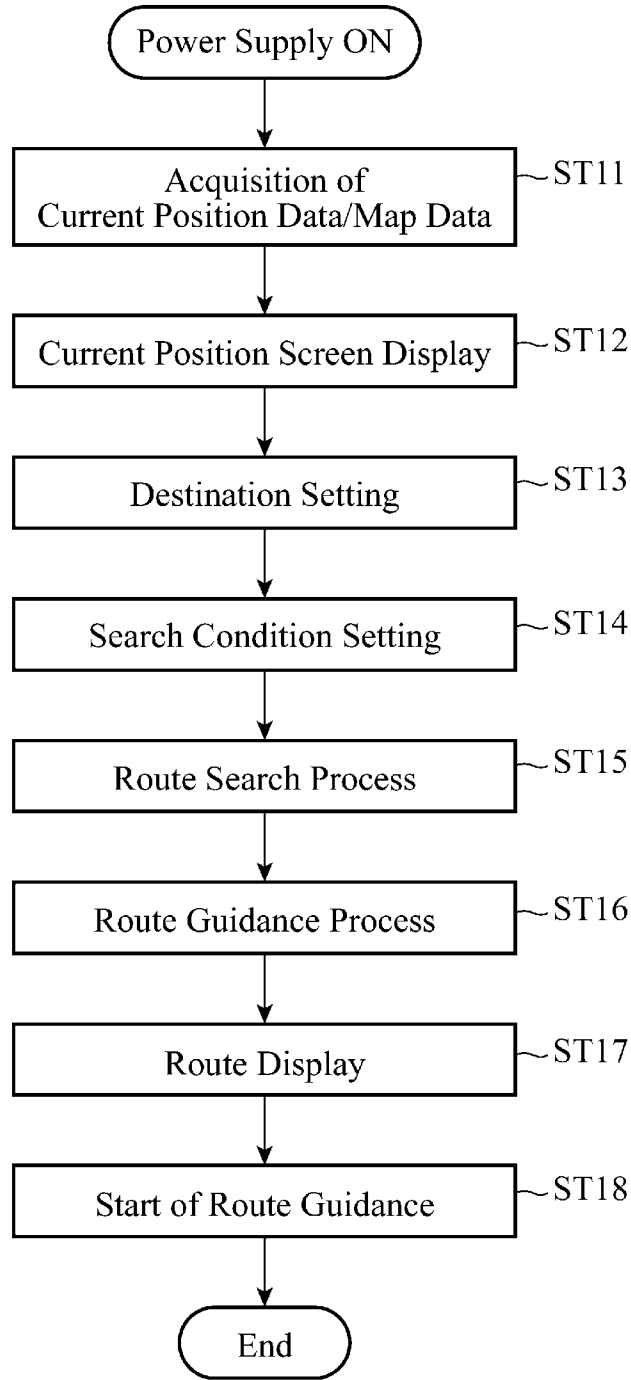


FIG.3



Explore Litigation Insights

Docket Alarm provides insights to develop a more informed litigation strategy and the peace of mind of knowing you're on top of things.

Real-Time Litigation Alerts



Keep your litigation team up-to-date with **real-time alerts** and advanced team management tools built for the enterprise, all while greatly reducing PACER spend.

Our comprehensive service means we can handle Federal, State, and Administrative courts across the country.

Advanced Docket Research



With over 230 million records, Docket Alarm's cloud-native docket research platform finds what other services can't. Coverage includes Federal, State, plus PTAB, TTAB, ITC and NLRB decisions, all in one place.

Identify arguments that have been successful in the past with full text, pinpoint searching. Link to case law cited within any court document via Fastcase.

Analytics At Your Fingertips



Learn what happened the last time a particular judge, opposing counsel or company faced cases similar to yours.

Advanced out-of-the-box PTAB and TTAB analytics are always at your fingertips.

API

Docket Alarm offers a powerful API (application programming interface) to developers that want to integrate case filings into their apps.

LAW FIRMS

Build custom dashboards for your attorneys and clients with live data direct from the court.

Automate many repetitive legal tasks like conflict checks, document management, and marketing.

FINANCIAL INSTITUTIONS

Litigation and bankruptcy checks for companies and debtors.

E-DISCOVERY AND LEGAL VENDORS

Sync your system to PACER to automate legal marketing.