



US 20060220923A1

(19) **United States**

(12) **Patent Application Publication**
Tanizaki et al.

(10) **Pub. No.: US 2006/0220923 A1**

(43) **Pub. Date: Oct. 5, 2006**

(54) **MAP DISPLAY METHOD**

(52) **U.S. Cl. 340/995.1**

(76) Inventors: **Masaaki Tanizaki**, Tokyo (JP); **Kishiko Maruyama**, Tokyo (JP); **Shigeru Shimada**, Tokyo (JP)

(57) **ABSTRACT**

Correspondence Address:
Stanley P Fisher
Reed Smith Hazel & Thomas
3110 Fairview Park Drive
Suite 1400
Falls Church, VA 22042 (US)

A map display method whereby the contents of a road map displayed can be easily and clearly grasped regardless of the running conditions of a vehicle.

In a summarized map displayed on a display screen 10, an area including a vehicle position 11, a destination 13 and a guide route 12 between them is displayed in simplified fashion. At a position far from the destination, as shown in FIG. 2A, a summarized map of a wide area is displayed and objects including a road 14 and a facility 15 are limited to a greater degree. With the approach of the vehicle position 11 to the destination 13, as shown in FIG. 2B, the contraction scale is decreased and a summarized map of a middle area is displayed, while at the same time increasing the objects displayed. With a further approach of the vehicle position 11 to the destination 13, as shown in FIG. 2C, a narrower area is displayed in summarization, while at the same time displaying substantially all the objects, thereby making it possible to grasp the neighborhood of the destination 13 in detail.

(21) Appl. No.: **10/565,300**

(22) PCT Filed: **Aug. 18, 2004**

(86) PCT No.: **PCT/JP04/11840**

(30) **Foreign Application Priority Data**

Aug. 22, 2003 (JP) 2003-298821

Publication Classification

(51) **Int. Cl.**
G08G 1/123 (2006.01)

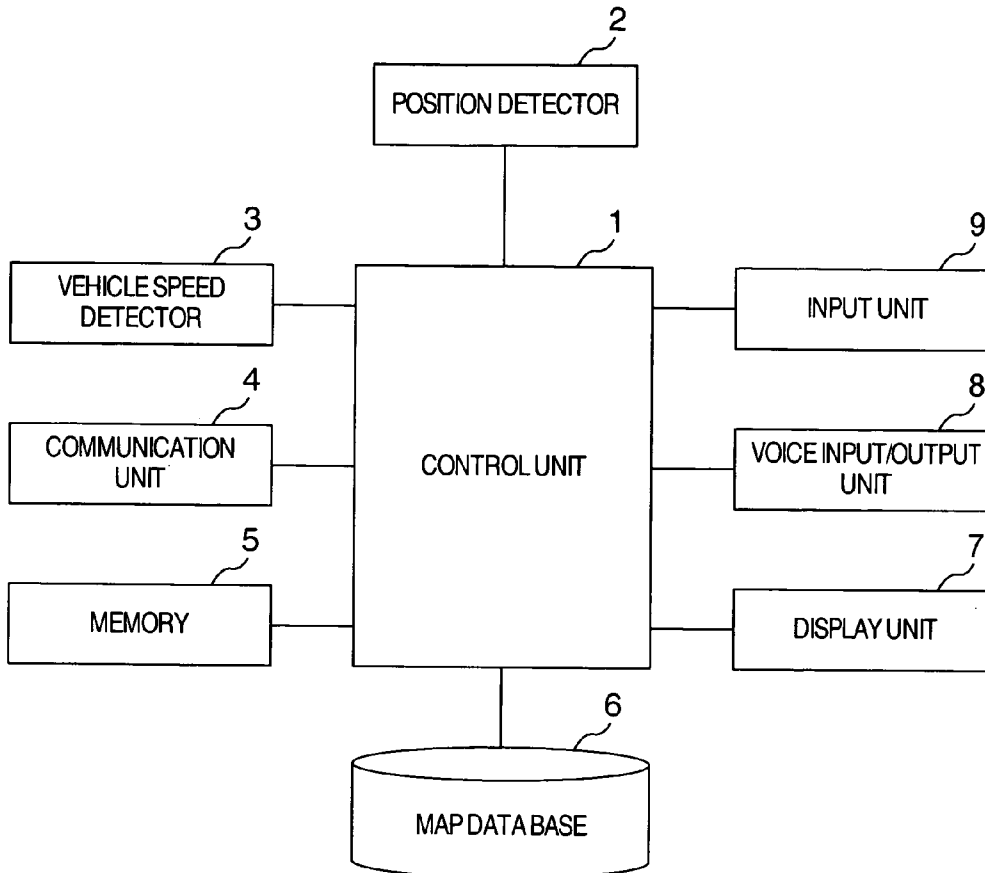


FIG. 1

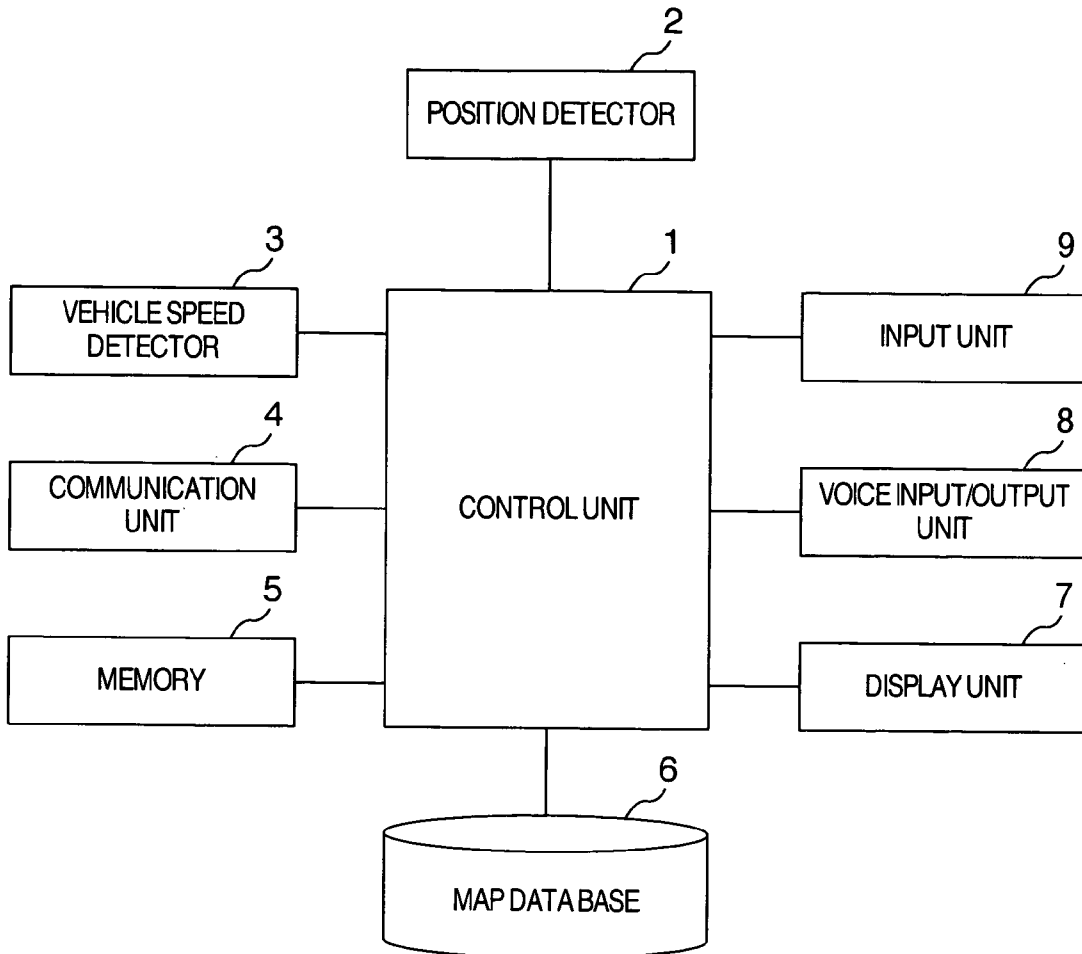


FIG.2A

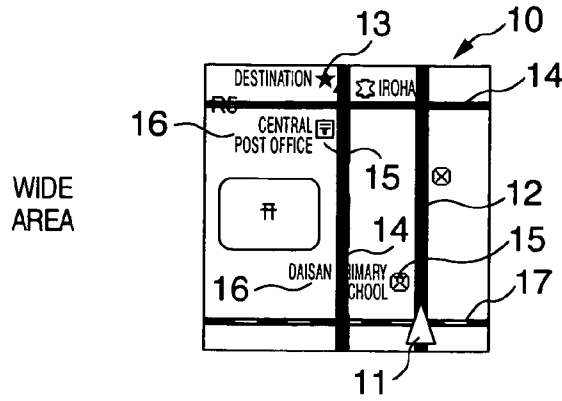


FIG.2B

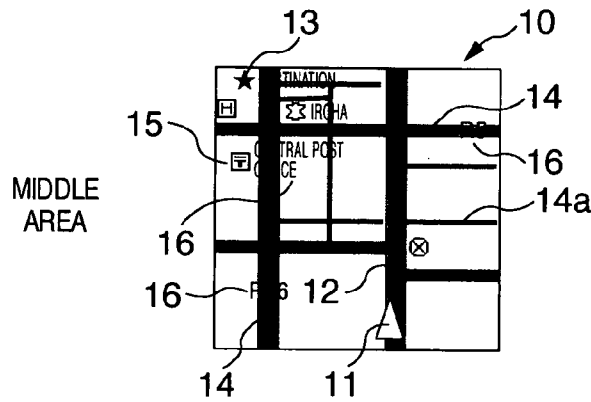


FIG.2C

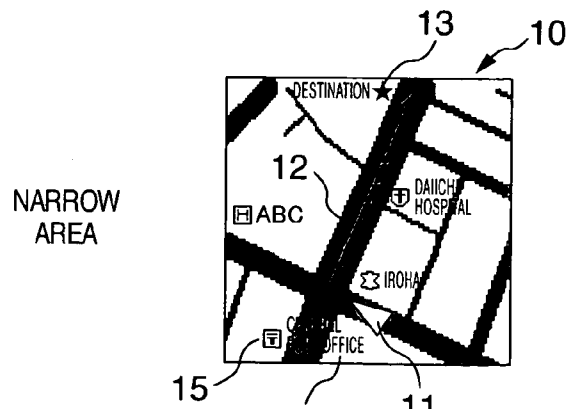


FIG.3A

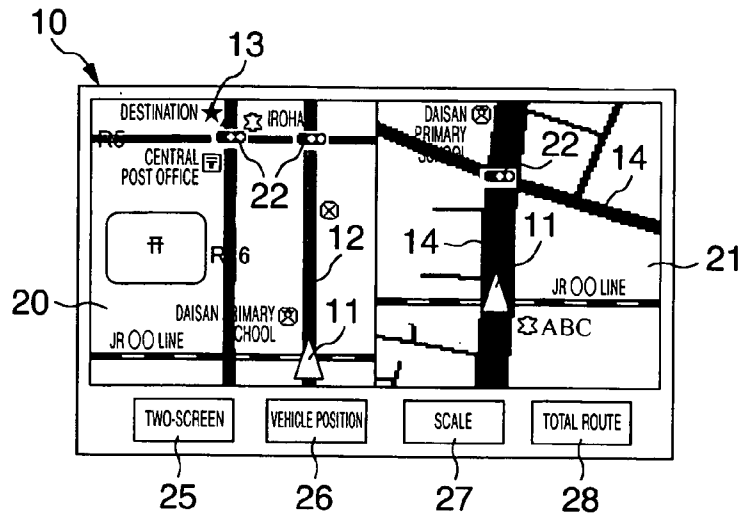


FIG.3B

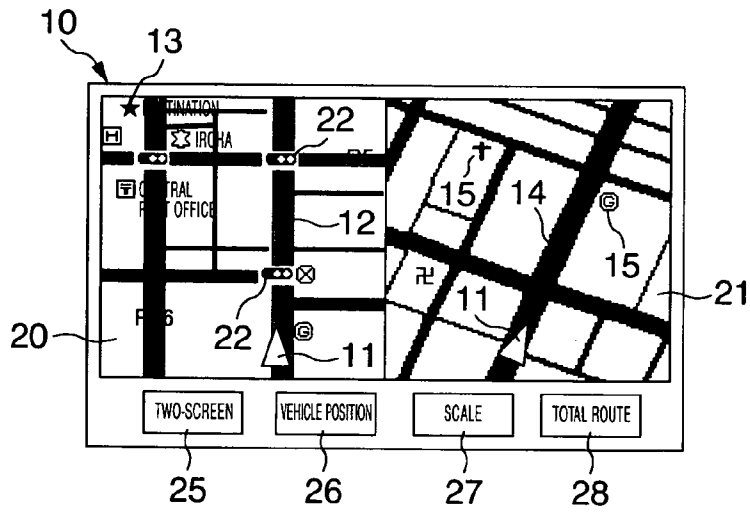


FIG.3C

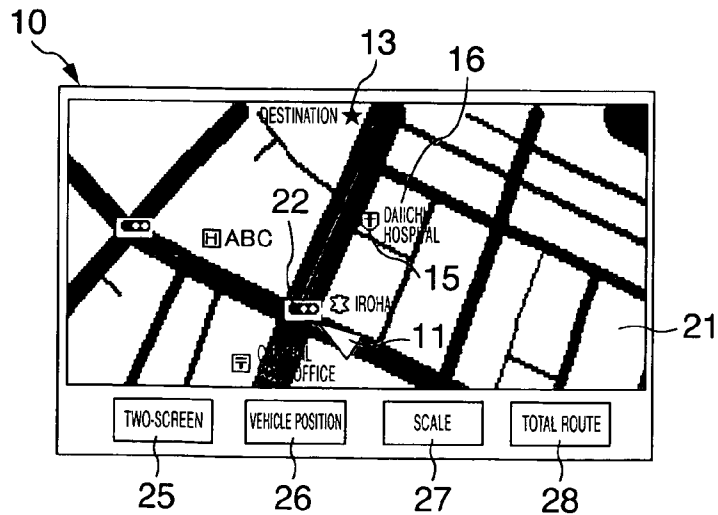
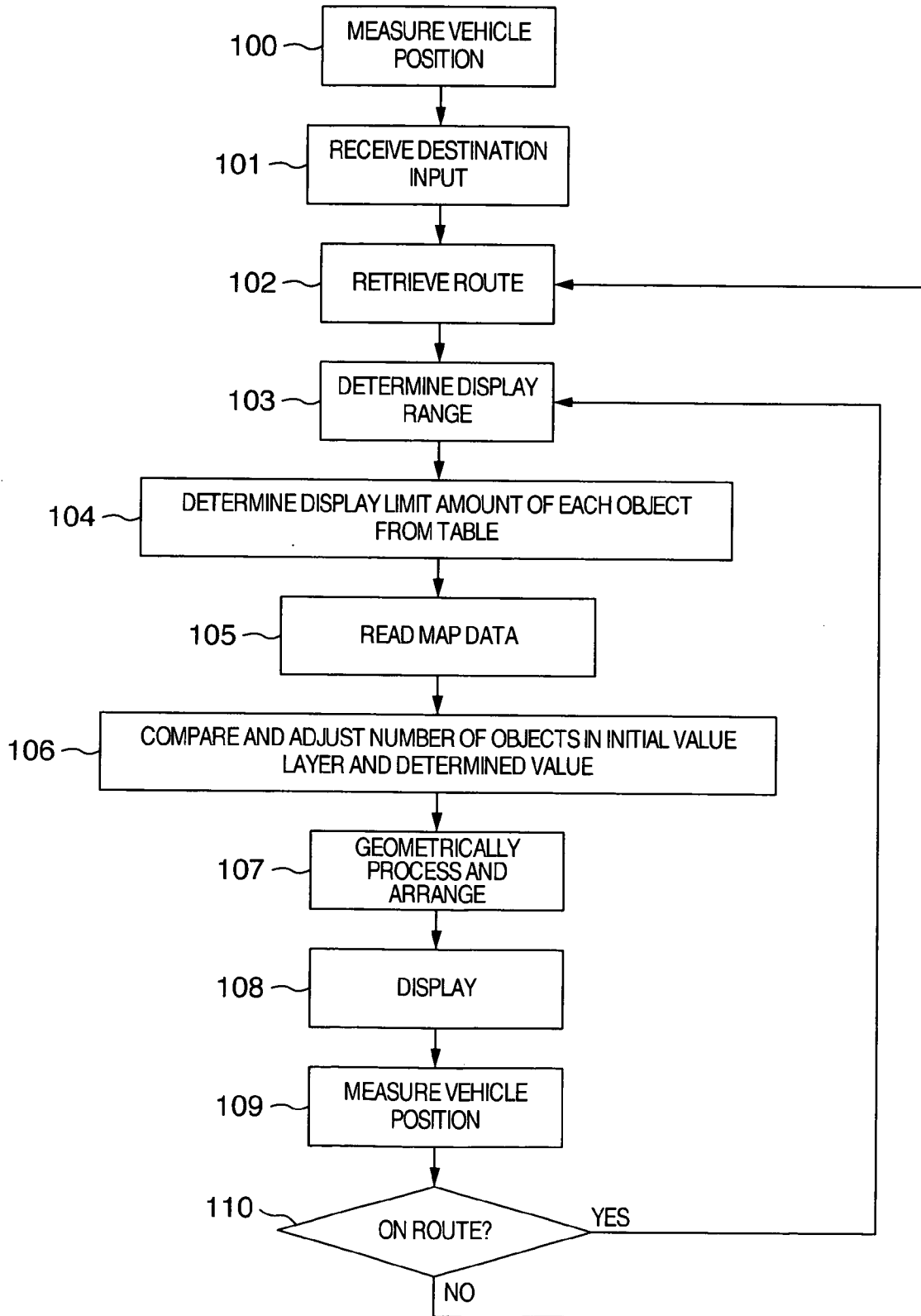


FIG.4



Explore Litigation Insights

Docket Alarm provides insights to develop a more informed litigation strategy and the peace of mind of knowing you're on top of things.

Real-Time Litigation Alerts



Keep your litigation team up-to-date with **real-time alerts** and advanced team management tools built for the enterprise, all while greatly reducing PACER spend.

Our comprehensive service means we can handle Federal, State, and Administrative courts across the country.

Advanced Docket Research



With over 230 million records, Docket Alarm's cloud-native docket research platform finds what other services can't. Coverage includes Federal, State, plus PTAB, TTAB, ITC and NLRB decisions, all in one place.

Identify arguments that have been successful in the past with full text, pinpoint searching. Link to case law cited within any court document via Fastcase.

Analytics At Your Fingertips



Learn what happened the last time a particular judge, opposing counsel or company faced cases similar to yours.

Advanced out-of-the-box PTAB and TTAB analytics are always at your fingertips.

API

Docket Alarm offers a powerful API (application programming interface) to developers that want to integrate case filings into their apps.

LAW FIRMS

Build custom dashboards for your attorneys and clients with live data direct from the court.

Automate many repetitive legal tasks like conflict checks, document management, and marketing.

FINANCIAL INSTITUTIONS

Litigation and bankruptcy checks for companies and debtors.

E-DISCOVERY AND LEGAL VENDORS

Sync your system to PACER to automate legal marketing.