



US006819345B1

(12) **United States Patent**  
**Jones et al.**

(10) **Patent No.:** **US 6,819,345 B1**  
(45) **Date of Patent:** **\*Nov. 16, 2004**

(54) **MANAGING POSITION AND SIZE FOR A DESKTOP COMPONENT**

(75) Inventors: **Christopher R. Jones**, Seattle, WA (US); **Christopher R. Brown**, Seattle, WA (US); **Michael A. Schmidt**, Issaquah, WA (US); **Sankar Ramasubramanian**, Redmond, WA (US); **Sean L. Flynn**, North Bend, WA (US); **Edward Jason Anderson**, Duvall, WA (US); **Mark H. Enomoto**, Seattle, WA (US); **Gayna Williams**, Seattle, WA (US); **Bryan T. Starbuck**, Redmond, WA (US)

(73) Assignee: **Microsoft Corporation**, Redmond, WA (US)

(\* ) Notice: This patent issued on a continued prosecution application filed under 37 CFR 1.53(d), and is subject to the twenty year patent term provisions of 35 U.S.C. 154(a)(2).

Subject to any disclaimer, the term of this patent is extended or adjusted under 35 U.S.C. 154(b) by 0 days.

(21) Appl. No.: **09/024,311**

(22) Filed: **Feb. 17, 1998**

(51) Int. Cl.<sup>7</sup> ..... **G06F 13/00**

(52) U.S. Cl. .... **345/856; 345/854; 345/853; 345/764**

(58) **Field of Search** ..... 345/340, 352, 345/146, 339, 357, 334, 342, 333, 145

(56) **References Cited**

**U.S. PATENT DOCUMENTS**

4,931,783 A \* 6/1990 Atkinson ..... 345/163

5,515,496 A *	5/1996	Kaehler et al. ....	345/159
5,581,686 A *	12/1996	Koppolu et al. ....	345/340
5,745,100 A *	4/1998	Bates et al. ....	345/157
5,760,771 A *	6/1998	Blonder et al. ....	345/336
5,786,818 A *	7/1998	Brewer et al. ....	345/339
5,808,601 A *	9/1998	Leah et al. ....	345/145
5,914,718 A *	6/1999	Chiu et al. ....	345/358
6,078,308 A *	6/2000	Rosenberg et al. ....	345/145
6,091,415 A *	7/2000	Chang et al. ....	345/347

**OTHER PUBLICATIONS**

IBM, "System Application Architecture—Common User Access Advanced Interface Design Guide" pp. 29–30, Jun. 1989.\*

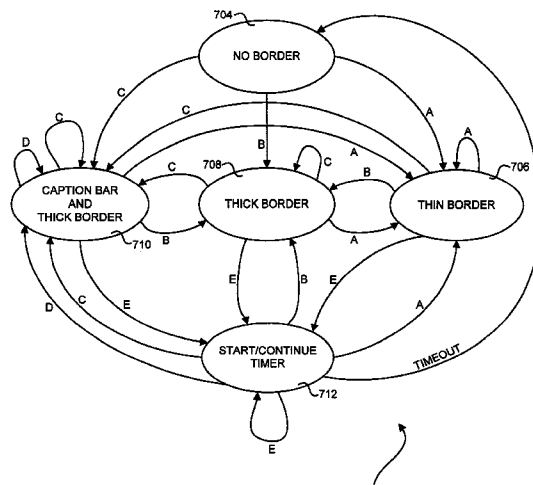
\* cited by examiner

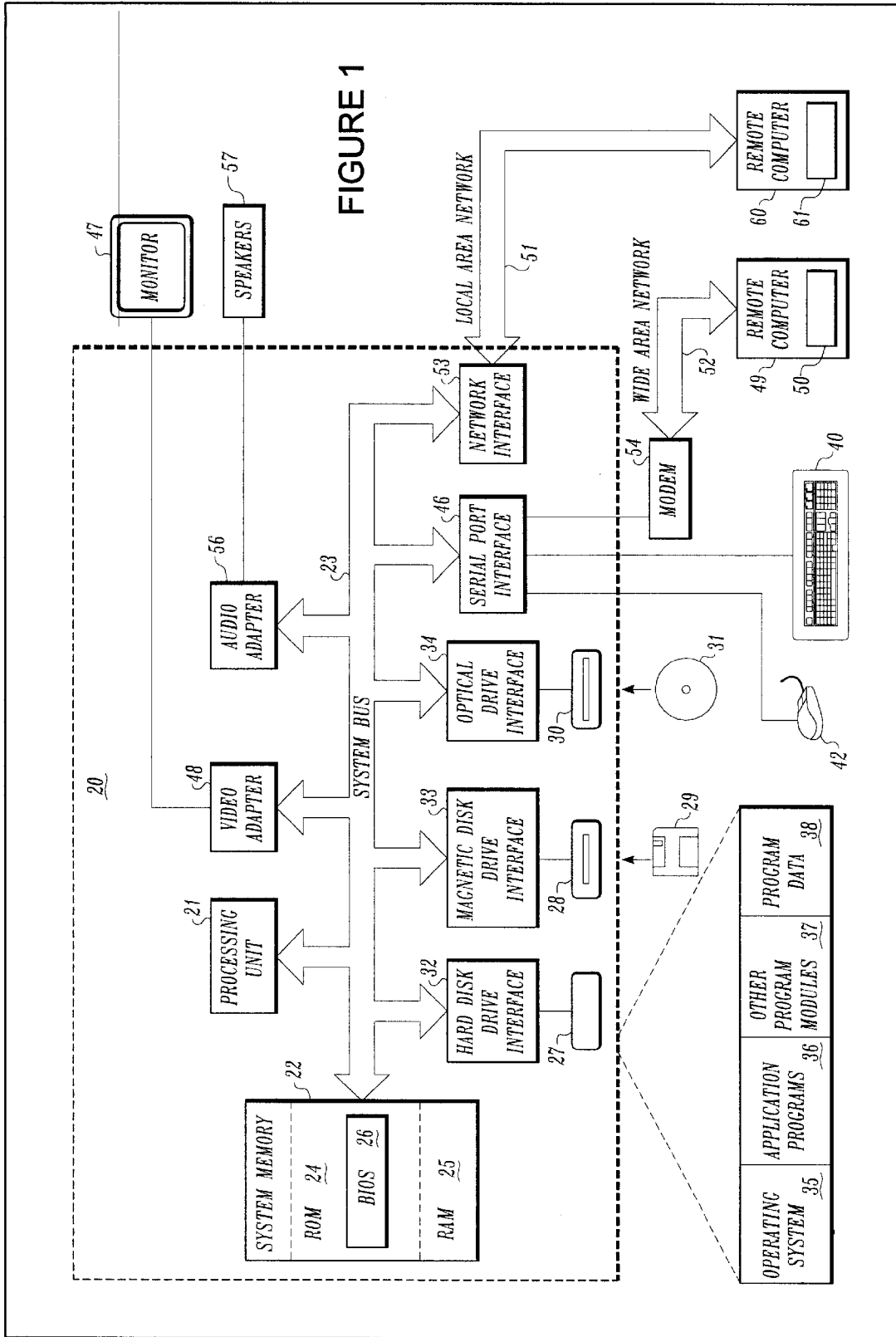
*Primary Examiner*—Raymond J. Bayerl  
*Assistant Examiner*—Tadesse Hailu  
(74) *Attorney, Agent, or Firm*—Christensen O'Connor Johnson Kindness PLLC

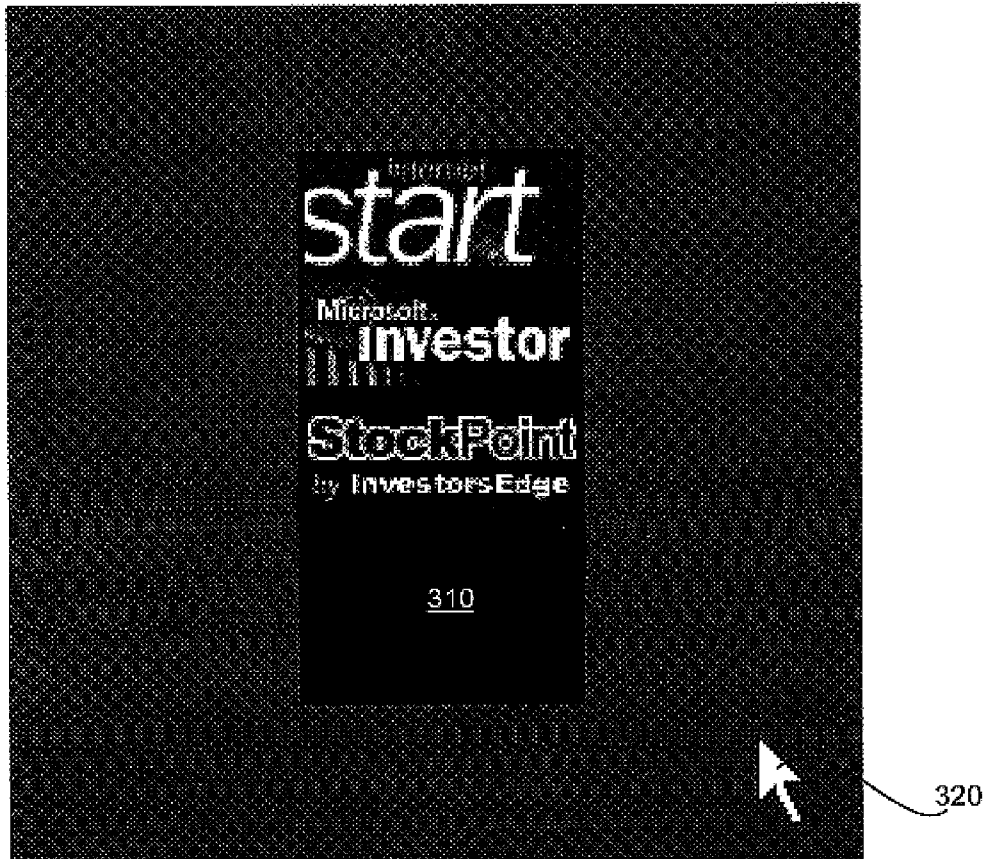
(57) **ABSTRACT**

In a graphical desktop environment displaying desktop components, a control is provided to track the position of a pointer on a screen, and when the pointer enters relevant regions with respect to a desktop component, a thin or thick border in displayed around the desktop component to enable a user to resize the desktop component, and/or a caption bar is displayed along an edge of the component to enable a user to move the desktop component on the desktop. The caption bar may additionally be provided with menu and close buttons, to enable the user to bring up a menu of properties and/or actions for the desktop component, and close the desktop component, respectively. When the pointer is outside any region relevant to a desktop component, no borders or caption bars are displayed, thereby resulting in a visually less cluttered appearance.

**9 Claims, 8 Drawing Sheets**







300

FIGURE 2

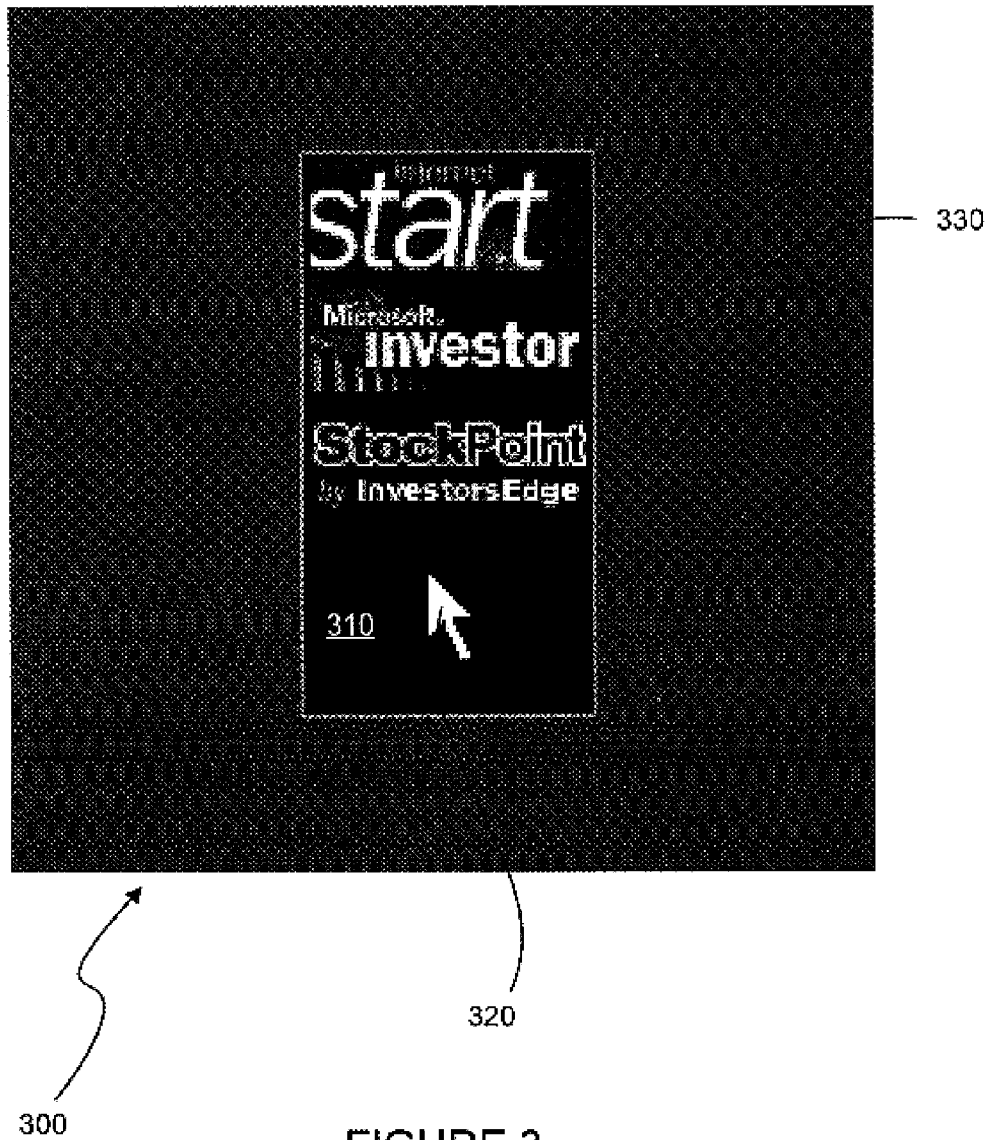
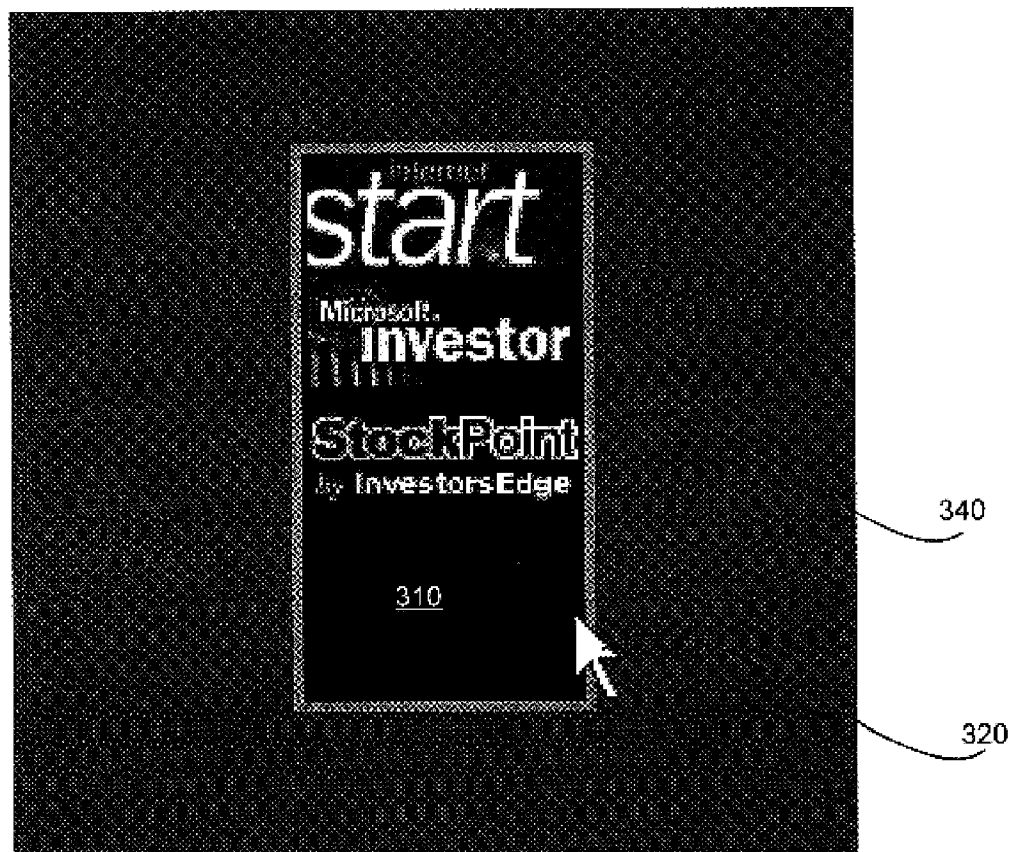


FIGURE 3



300

FIGURE 4

# Explore Litigation Insights

Docket Alarm provides insights to develop a more informed litigation strategy and the peace of mind of knowing you're on top of things.

## Real-Time Litigation Alerts



Keep your litigation team up-to-date with **real-time alerts** and advanced team management tools built for the enterprise, all while greatly reducing PACER spend.

Our comprehensive service means we can handle Federal, State, and Administrative courts across the country.

## Advanced Docket Research



With over 230 million records, Docket Alarm's cloud-native docket research platform finds what other services can't. Coverage includes Federal, State, plus PTAB, TTAB, ITC and NLRB decisions, all in one place.

Identify arguments that have been successful in the past with full text, pinpoint searching. Link to case law cited within any court document via Fastcase.

## Analytics At Your Fingertips



Learn what happened the last time a particular judge, opposing counsel or company faced cases similar to yours.

Advanced out-of-the-box PTAB and TTAB analytics are always at your fingertips.

## API

Docket Alarm offers a powerful API (application programming interface) to developers that want to integrate case filings into their apps.

## LAW FIRMS

Build custom dashboards for your attorneys and clients with live data direct from the court.

Automate many repetitive legal tasks like conflict checks, document management, and marketing.

## FINANCIAL INSTITUTIONS

Litigation and bankruptcy checks for companies and debtors.

## E-DISCOVERY AND LEGAL VENDORS

Sync your system to PACER to automate legal marketing.