

(12) **United States Patent**
Ueshima

(10) **Patent No.:** **US 6,731,731 B1**
(45) **Date of Patent:** **May 4, 2004**

(54) **AUTHENTICATION METHOD,
AUTHENTICATION SYSTEM AND
RECORDING MEDIUM**

2002/0106065 A1 * 8/2002 Joyce et al. 379/114.02

FOREIGN PATENT DOCUMENTS

- (75) Inventor: **Yasushi Ueshima**, Tokyo (JP)
- (73) Assignee: **Comsquare Co., Ltd.**, Tokyo (JP)
- (*) Notice: Subject to any disclaimer, the term of this patent is extended or adjusted under 35 U.S.C. 154(b) by 567 days.
- (21) Appl. No.: **09/806,350**
- (22) PCT Filed: **Jul. 3, 2000**
- (86) PCT No.: **PCT/JP00/04399**

EP	686905	12/1995
JP	08-227397	9/1996
JP	10-229459	8/1998
JP	10-336345	12/1998
JP	10-341224	12/1998
JP	11-120397	4/1999
JP	11-161618	6/1999
JP	11-178022	7/1999
JP	2000-10927	1/2000

* cited by examiner

§ 371 (c)(1),
(2), (4) Date: **Mar. 29, 2001**

- (87) PCT Pub. No.: **WO01/09735**
PCT Pub. Date: **Feb. 8, 2001**

- (30) **Foreign Application Priority Data**
Jul. 30, 1999 (JP) 11-216948
- (51) **Int. Cl.**⁷ **H04M 3/00**; G06F 12/14
- (52) **U.S. Cl.** **379/196**; 713/201
- (58) **Field of Search** 379/189, 191,
379/196, 197, 198, 114.02; 713/200, 201,
202

(56) **References Cited**

U.S. PATENT DOCUMENTS

2001/0000358 A1 * 4/2001 Isomichi et al. 713/201

Primary Examiner—Benny Tieu
(74) *Attorney, Agent, or Firm*—Collard & Roe, P.C.

(57) **ABSTRACT**

When a service provider authenticates a preliminarily registered user, a telephone number of a telephone of the user is registered prior to the authentication and the user calls a CTI (computer telephony integration) server by the use of the telephone. The CTI server authenticates the user with reference to the telephone number of the call received. A password is generated by an information processing device such as the CTI server and is transmitted to both the user and the service provider. The service provider compares the received password and a password inputted by the user and provides the user with service upon coincidence between both passwords.

30 Claims, 6 Drawing Sheets

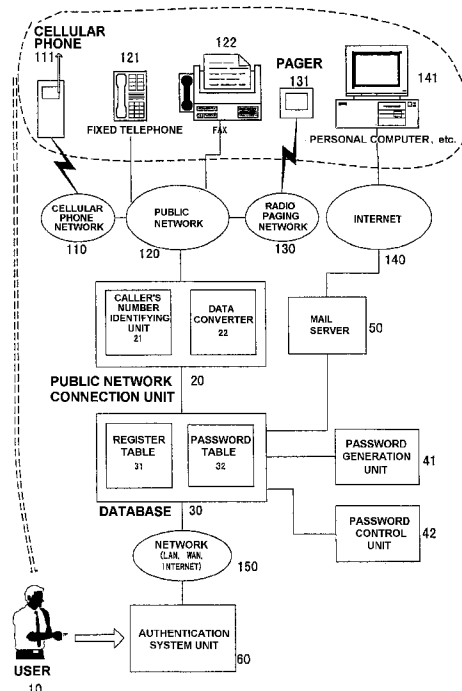


FIG. 1

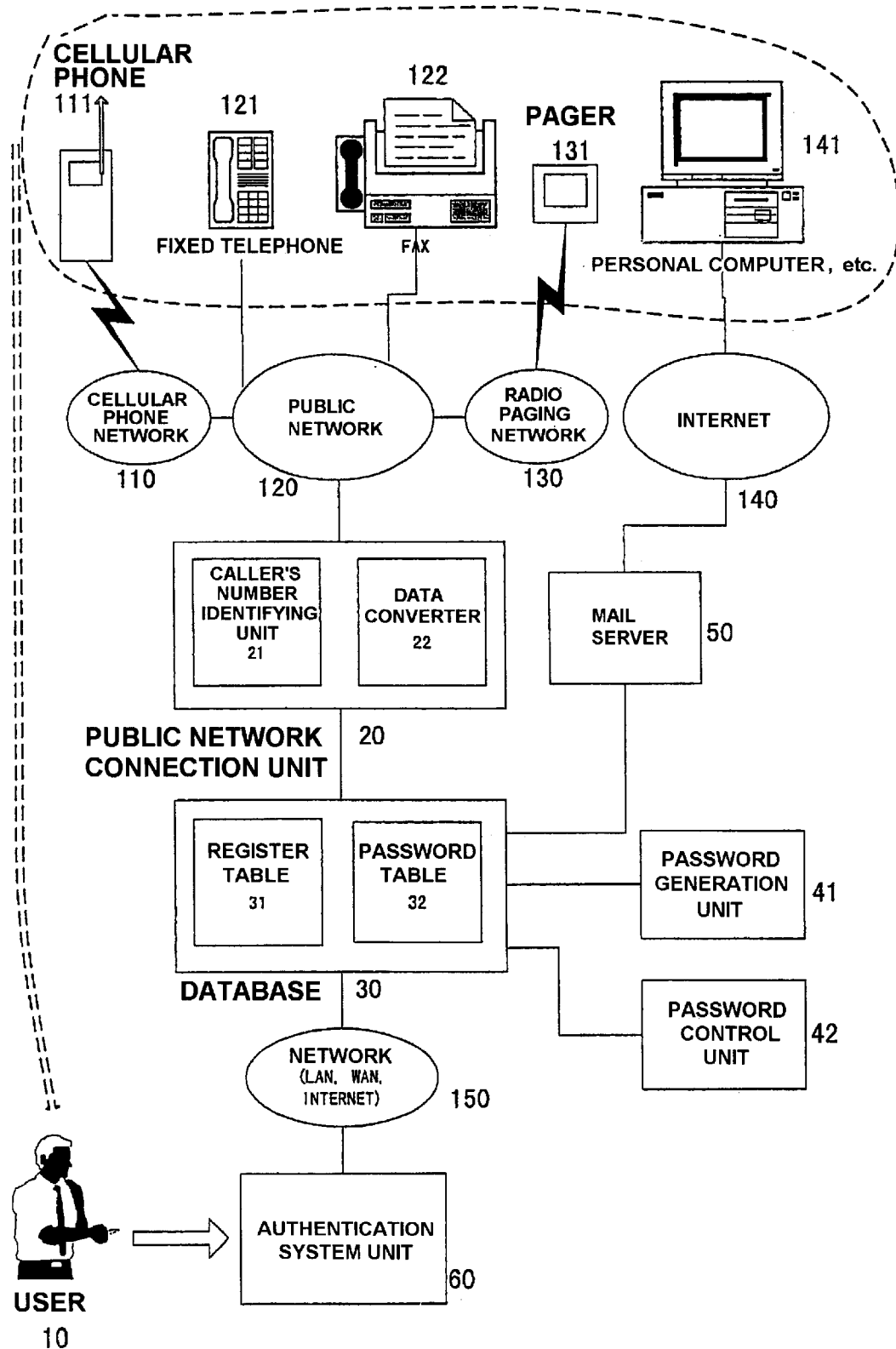


FIG. 2

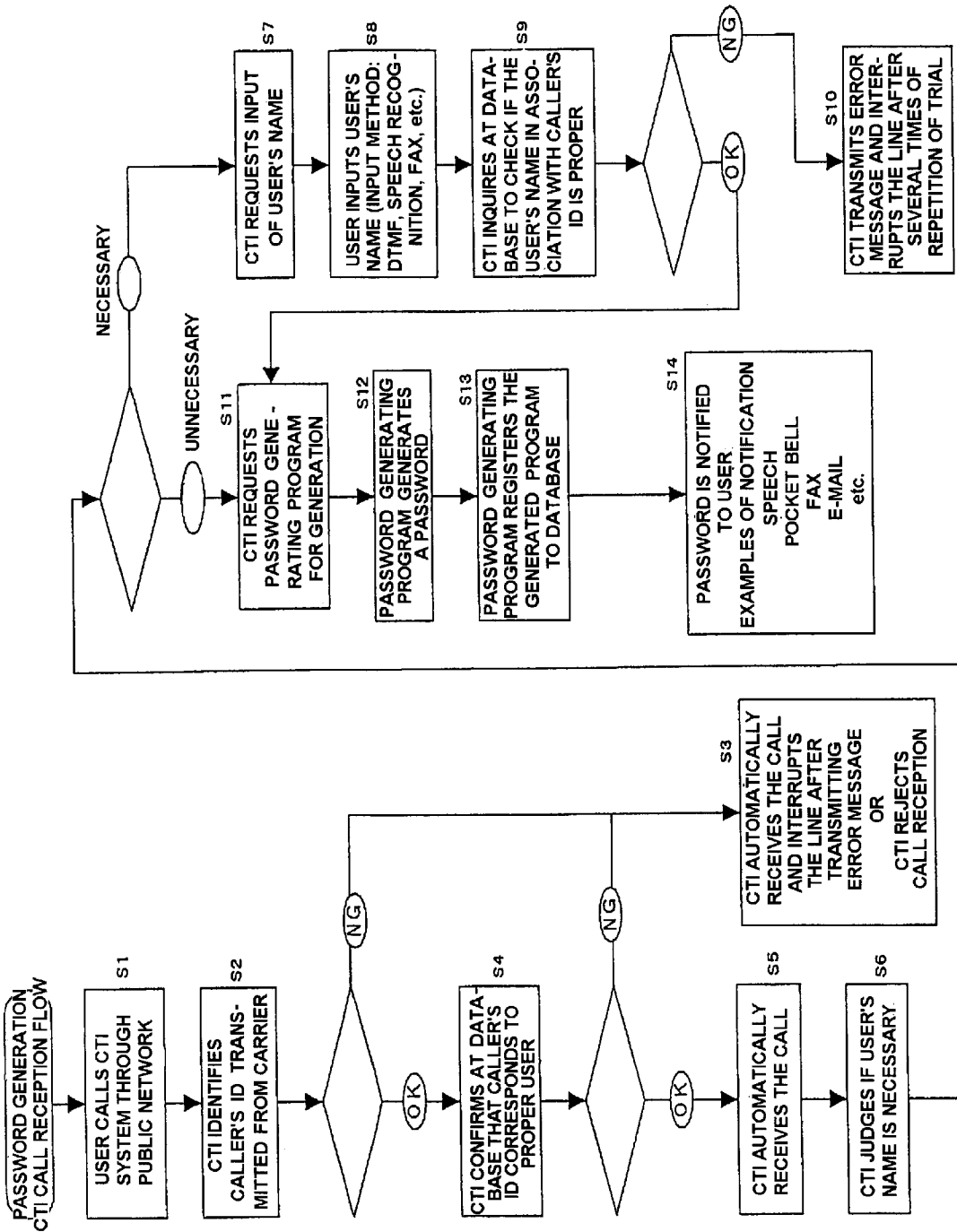


FIG. 3

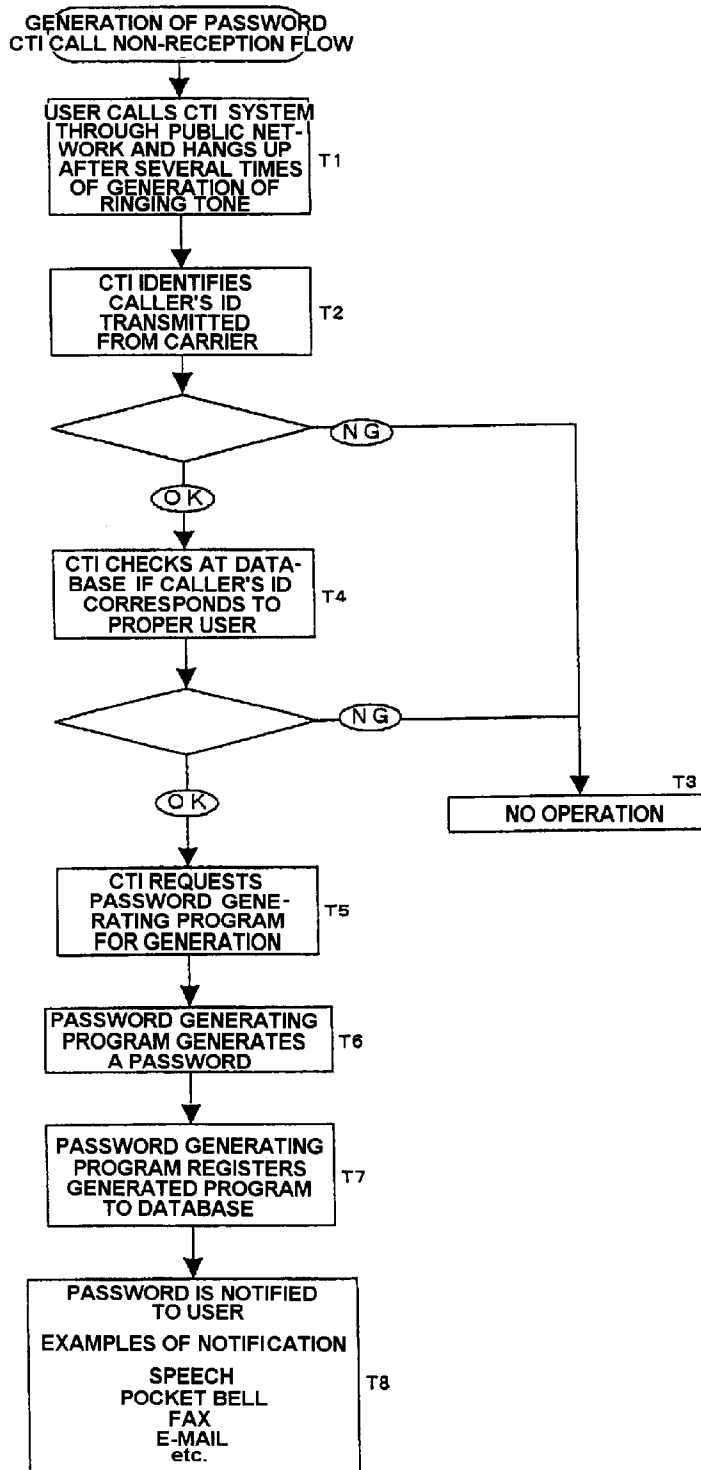
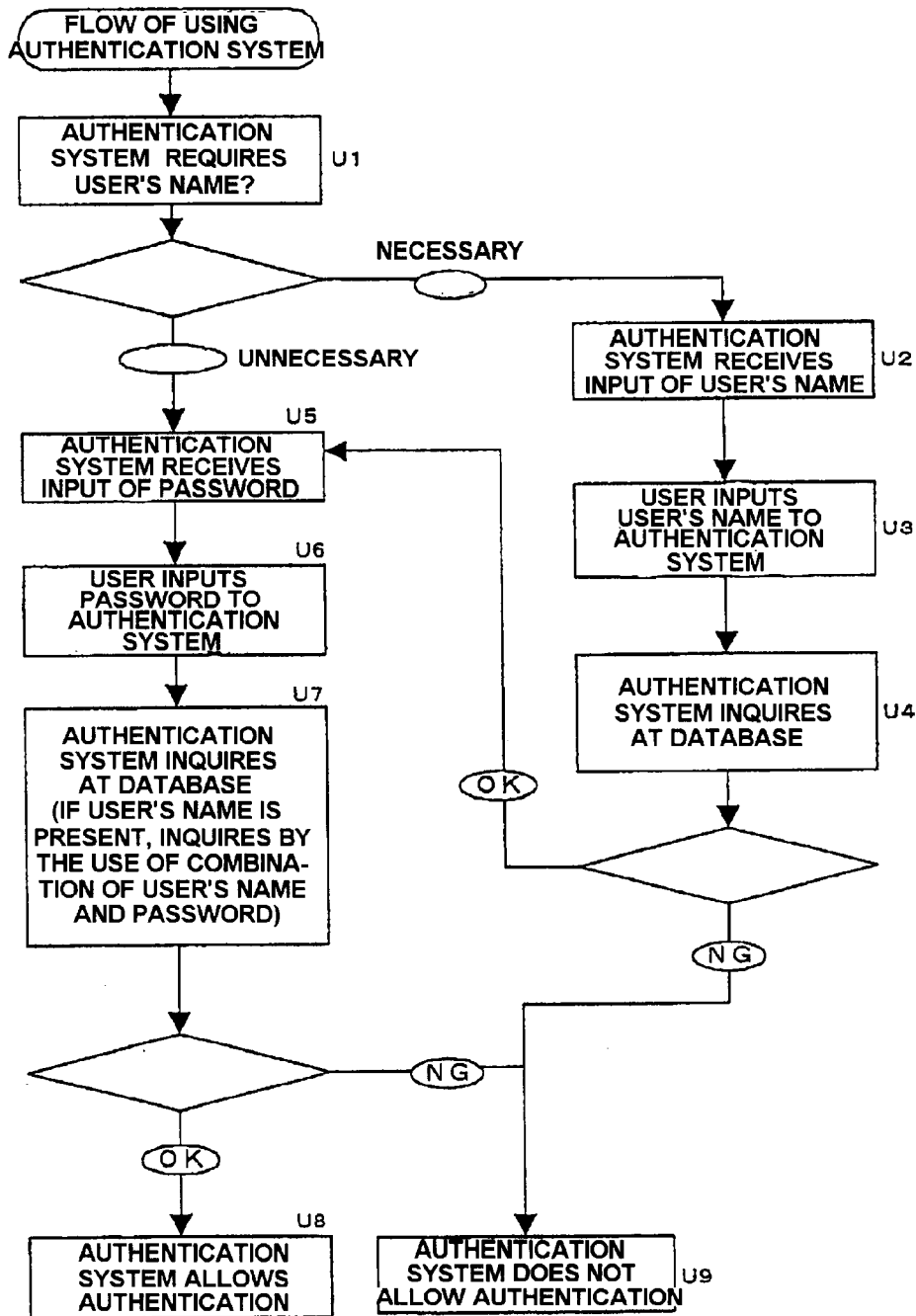


FIG. 4



Explore Litigation Insights

Docket Alarm provides insights to develop a more informed litigation strategy and the peace of mind of knowing you're on top of things.

Real-Time Litigation Alerts



Keep your litigation team up-to-date with **real-time alerts** and advanced team management tools built for the enterprise, all while greatly reducing PACER spend.

Our comprehensive service means we can handle Federal, State, and Administrative courts across the country.

Advanced Docket Research



With over 230 million records, Docket Alarm's cloud-native docket research platform finds what other services can't. Coverage includes Federal, State, plus PTAB, TTAB, ITC and NLRB decisions, all in one place.

Identify arguments that have been successful in the past with full text, pinpoint searching. Link to case law cited within any court document via Fastcase.

Analytics At Your Fingertips



Learn what happened the last time a particular judge, opposing counsel or company faced cases similar to yours.

Advanced out-of-the-box PTAB and TTAB analytics are always at your fingertips.

API

Docket Alarm offers a powerful API (application programming interface) to developers that want to integrate case filings into their apps.

LAW FIRMS

Build custom dashboards for your attorneys and clients with live data direct from the court.

Automate many repetitive legal tasks like conflict checks, document management, and marketing.

FINANCIAL INSTITUTIONS

Litigation and bankruptcy checks for companies and debtors.

E-DISCOVERY AND LEGAL VENDORS

Sync your system to PACER to automate legal marketing.