

(19) **United States**

(12) **Patent Application Publication** (10) **Pub. No.: US 2003/0063714 A1**

Stumer et al.

(43) **Pub. Date:**

Apr. 3, 2003

(54) **INTERNET PROTOCOL (IP) EMERGENCY CONNECTIONS (ITEC) TELEPHONY**

(57)

ABSTRACT

(76) Inventors: **Peggy M. Stumer**, Boca Raton, FL (US); **Robert Stampfl**, Hohenkammer (DE); **Alfons Fartmann**, Neufahrn (DE); **Walter Hipfinger**, Vienna (AT)

An IP Telephony Emergency Connections (ITEC) system and method that determines the precise origin of an emergency call and routes the call to the proper Public Service Answering Point (PSAP). A source-based routing mechanism is provided in an IP telephony type network, such as a VoIP or IP over LAN/ATM. Emergency calls are routed to the correct PSAP jurisdiction. Each server/switch may include the mechanism such that the IP Telephony network can identify an E911 connection and egress to a public network at a point closest to the emergency call point of origin. Whenever an emergency number call is made, the call's origin is determined during call setup establishment. Every port or end user jack in the network is assigned a Source Group Index (SGI), which is a number or index representing each PSAP jurisdiction in the network. All ports/jacks within the same PSAP jurisdiction are assigned the same SGI. Users may be in different areas of multiple PSAP jurisdictions.

Correspondence Address:
Siemens Corporation
Intellectual Property Department
186 Wood Avenue South
Iselin, NJ 08830 (US)

(21) Appl. No.: **09/963,242**

(22) Filed: **Sep. 26, 2001**

Publication Classification

(51) **Int. Cl.⁷** **H04M 11/04**

(52) **U.S. Cl.** **379/37; 379/45**

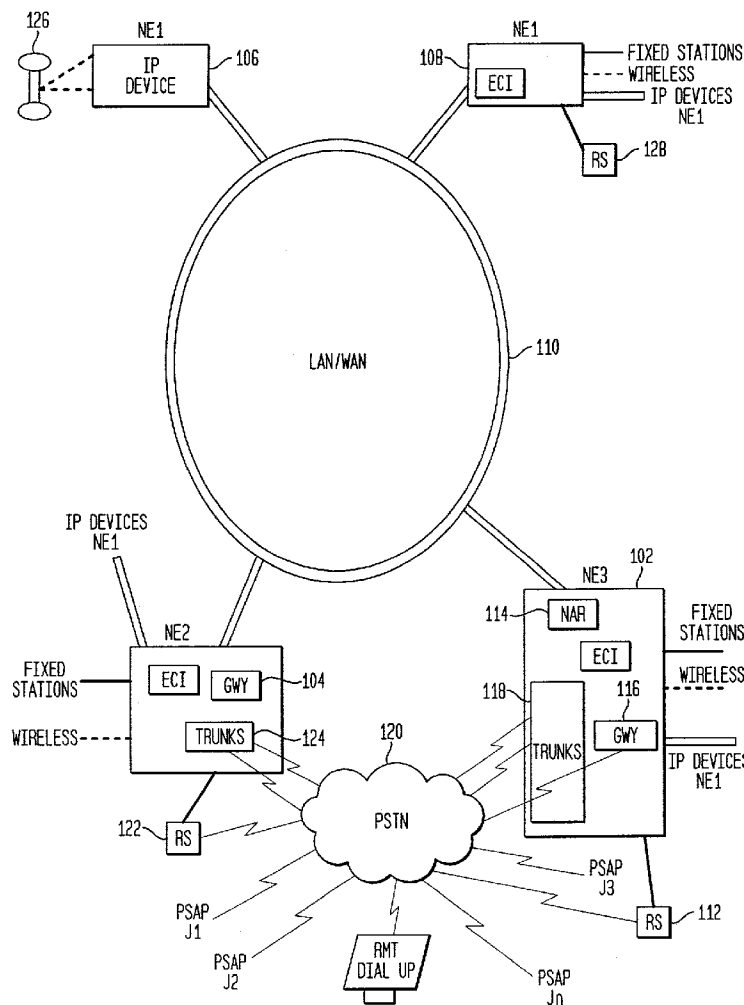


FIG. 1

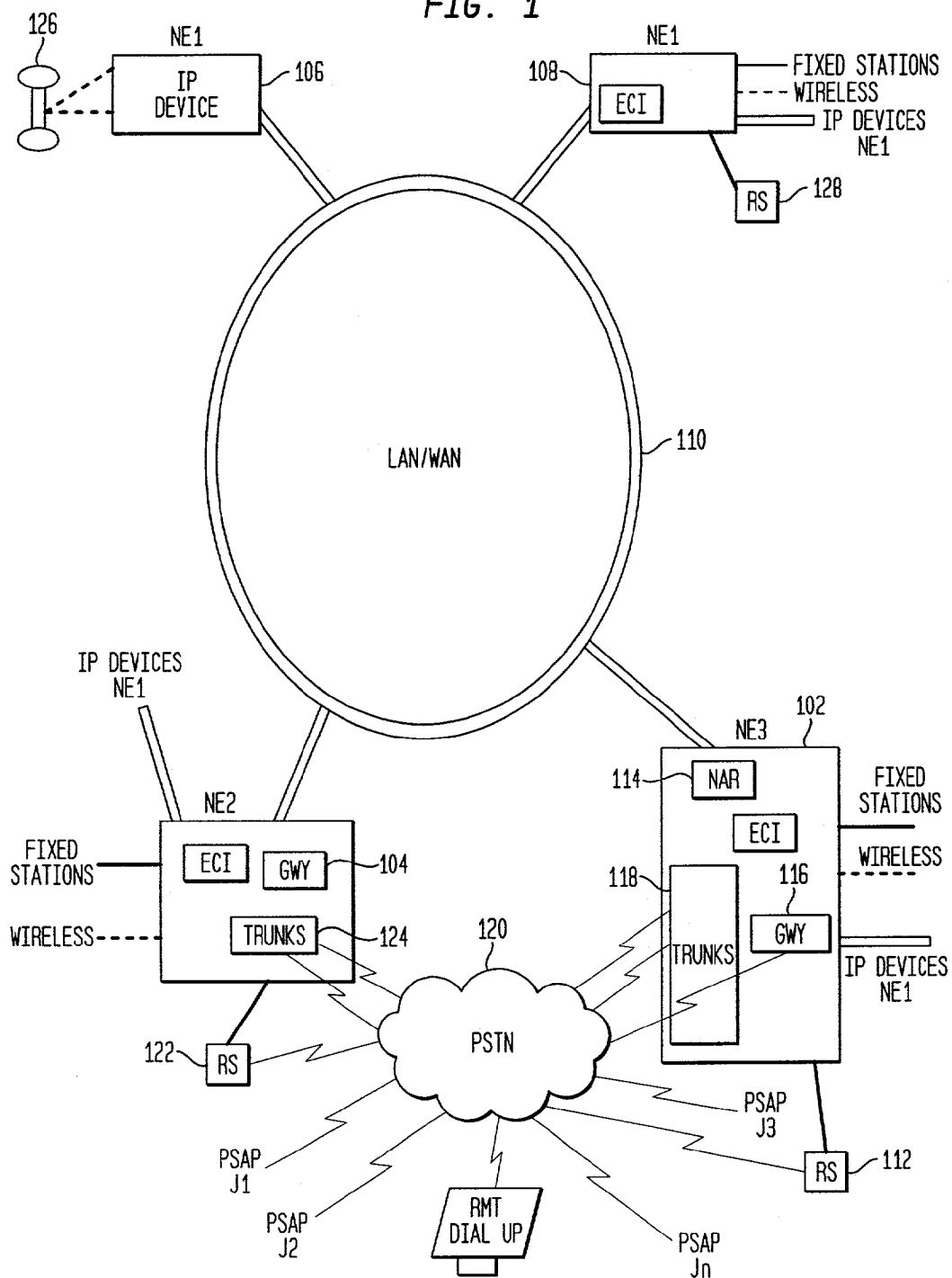


FIG. 2

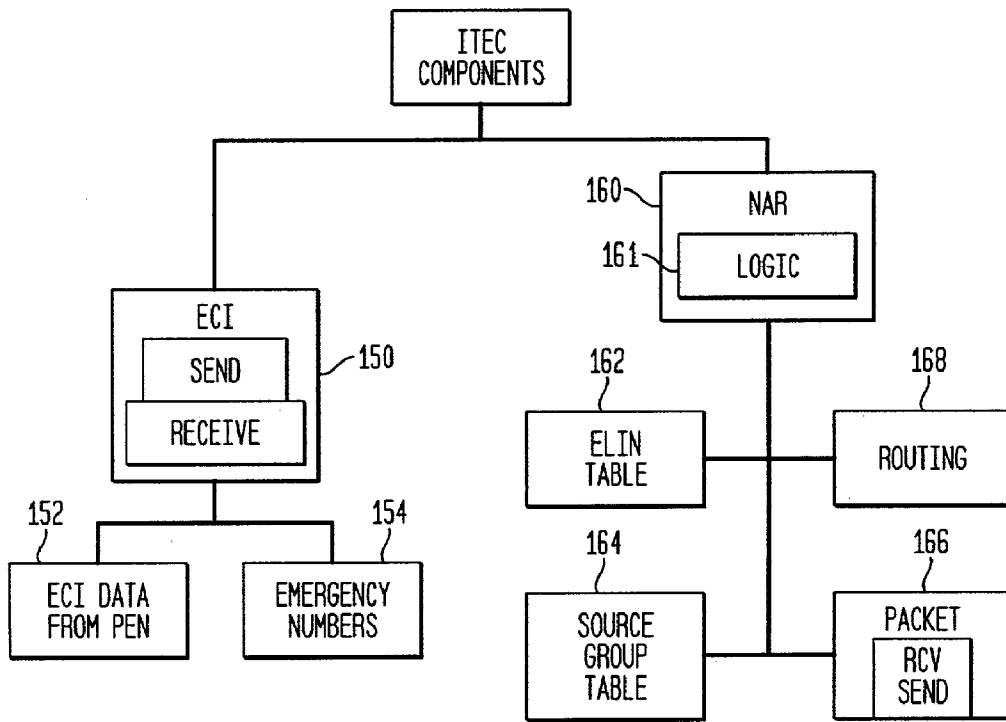


FIG. 3

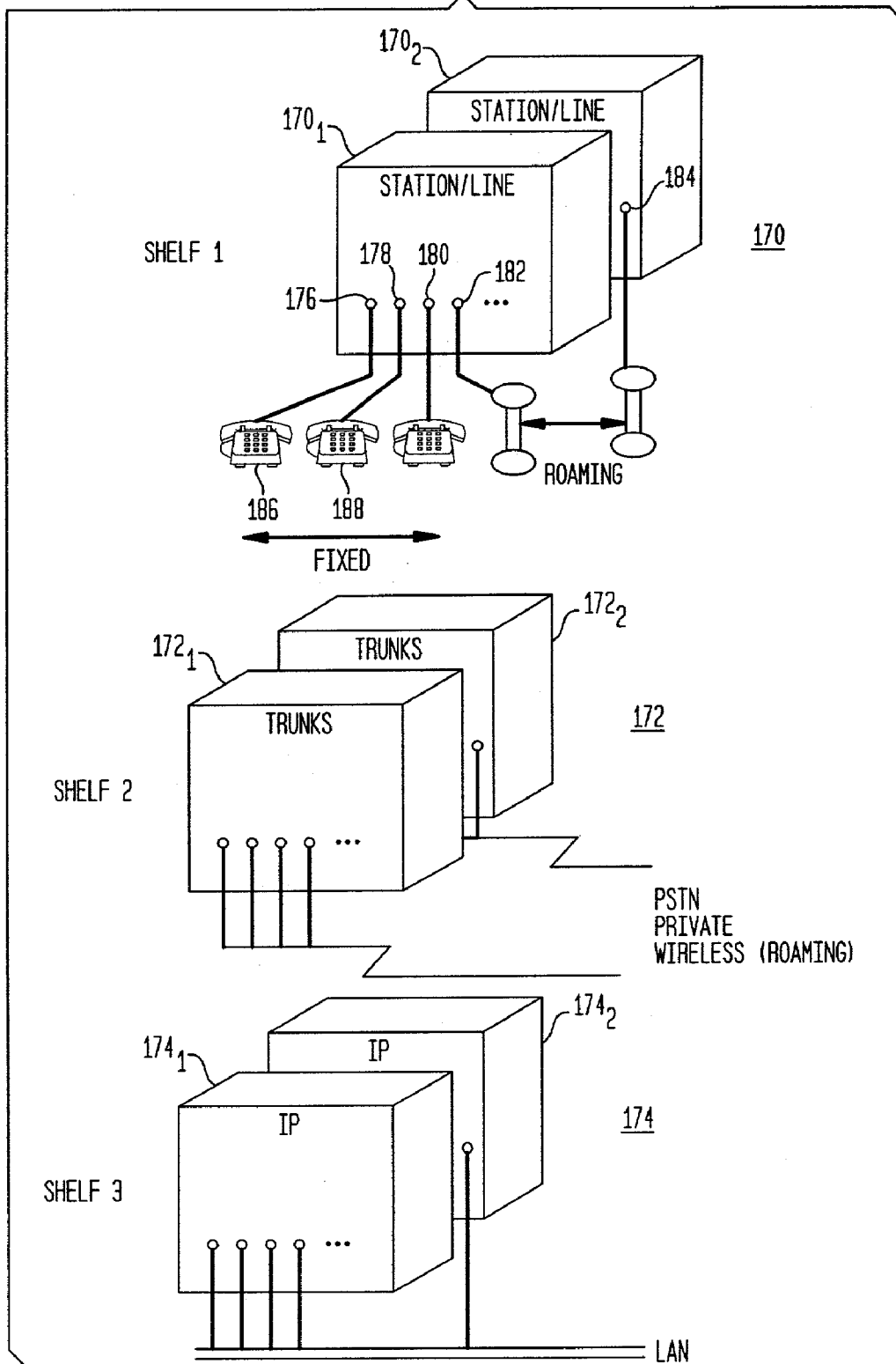
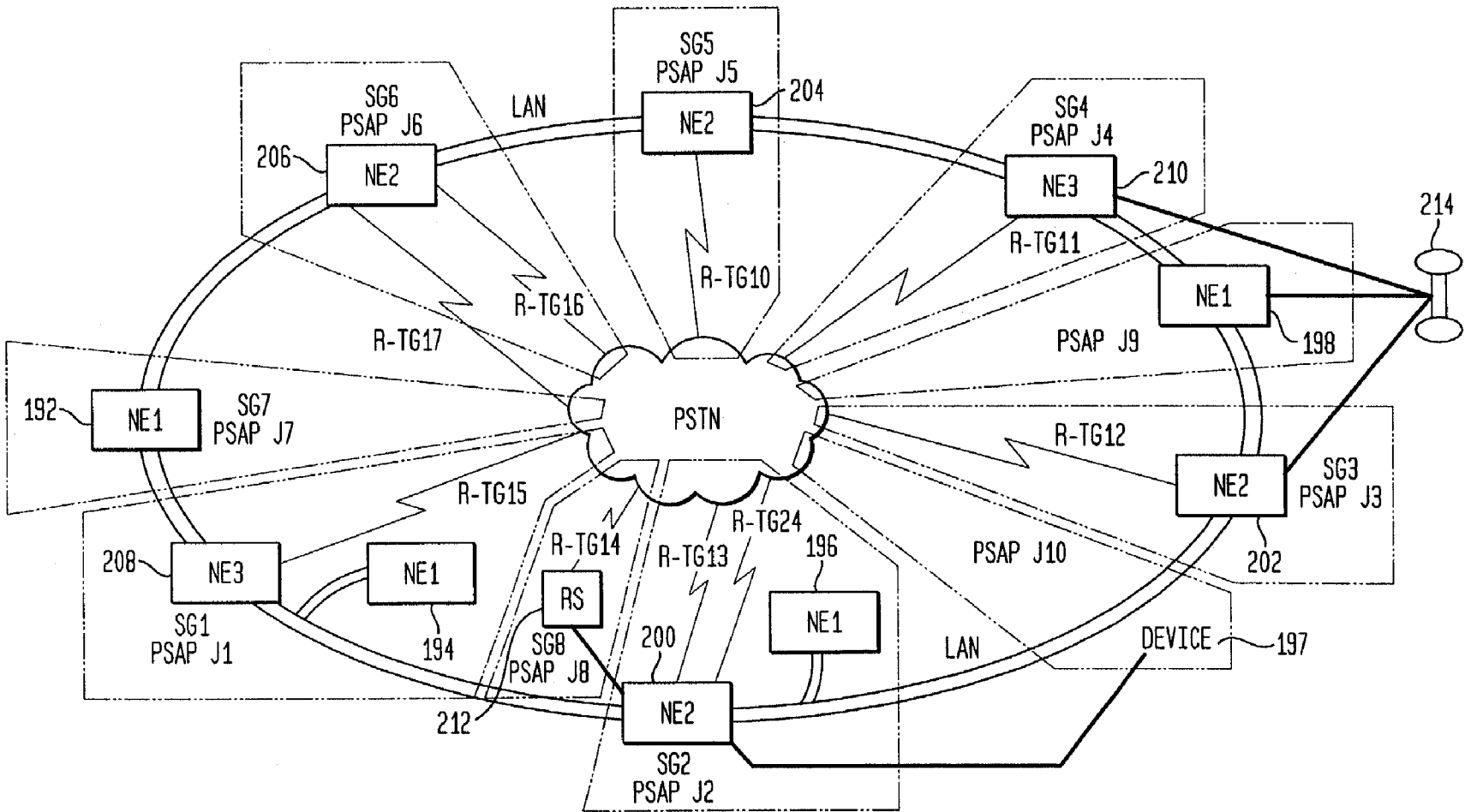


FIG. 4



Explore Litigation Insights

Docket Alarm provides insights to develop a more informed litigation strategy and the peace of mind of knowing you're on top of things.

Real-Time Litigation Alerts



Keep your litigation team up-to-date with **real-time alerts** and advanced team management tools built for the enterprise, all while greatly reducing PACER spend.

Our comprehensive service means we can handle Federal, State, and Administrative courts across the country.

Advanced Docket Research



With over 230 million records, Docket Alarm's cloud-native docket research platform finds what other services can't. Coverage includes Federal, State, plus PTAB, TTAB, ITC and NLRB decisions, all in one place.

Identify arguments that have been successful in the past with full text, pinpoint searching. Link to case law cited within any court document via Fastcase.

Analytics At Your Fingertips



Learn what happened the last time a particular judge, opposing counsel or company faced cases similar to yours.

Advanced out-of-the-box PTAB and TTAB analytics are always at your fingertips.

API

Docket Alarm offers a powerful API (application programming interface) to developers that want to integrate case filings into their apps.

LAW FIRMS

Build custom dashboards for your attorneys and clients with live data direct from the court.

Automate many repetitive legal tasks like conflict checks, document management, and marketing.

FINANCIAL INSTITUTIONS

Litigation and bankruptcy checks for companies and debtors.

E-DISCOVERY AND LEGAL VENDORS

Sync your system to PACER to automate legal marketing.