



US006127947A

United States Patent [19]
Uchida et al.

[11] **Patent Number:** **6,127,947**
[45] **Date of Patent:** **Oct. 3, 2000**

[54] **VEHICLE INFORMATION COMMUNICATION DEVICE AND VEHICLE INFORMATION COMMUNICATION SYSTEM**

[75] Inventors: **Toshihiro Uchida; Hiroshi Honda; Akihiro Tanaka; Kazunori Sakai; Norimasa Hiramatsu**, all of Aichi-ken, Japan

[73] Assignee: **Toyota Jidosha Kabushiki Kaisa**, Toyota, Japan

[21] Appl. No.: **09/297,963**

[22] PCT Filed: **Nov. 13, 1997**

[86] PCT No.: **PCT/JP97/04147**

§ 371 Date: **Jul. 12, 1999**

§ 102(e) Date: **Jul. 12, 1999**

[87] PCT Pub. No.: **WO98/21077**

PCT Pub. Date: **May 22, 1998**

[30] **Foreign Application Priority Data**

Nov. 13, 1996 [JP] Japan 8-302164
Nov. 25, 1996 [JP] Japan 8-313908

[51] **Int. Cl.**⁷ **B60Q 1/00**

[52] **U.S. Cl.** **340/999; 340/439; 340/539; 701/24; 455/420**

[58] **Field of Search** **340/639, 539, 340/531, 999; 73/116; 701/24; 770/338; 455/420; 702/122**

[56] **References Cited**

U.S. PATENT DOCUMENTS

4,853,850 8/1989 Krass, Jr. et al. 701/35
5,278,759 1/1994 Berra et al. 701/1
5,442,553 8/1995 Parrillo 455/420
5,499,181 3/1996 Smith 455/456
5,513,107 4/1996 Gormley 701/48

5,815,071 9/1998 Doyle 340/439
5,844,473 12/1998 Kaman 340/439
5,848,064 12/1998 Cowan 370/338
5,867,089 2/1999 Zyburt et al. 340/323 R
5,908,454 6/1999 Zyburt et al. 701/24
6,029,508 2/2000 Schoenbeck et al. 73/116

FOREIGN PATENT DOCUMENTS

0 383 593 8/1990 European Pat. Off. .
2-99439 4/1990 Japan .
5-195859 8/1993 Japan .
6-219187 8/1994 Japan .
6-229767 8/1994 Japan .
6-266997 9/1994 Japan .
6-297983 10/1994 Japan .
7-223516 8/1995 Japan .
3-203770 9/1995 Japan .
8-95488 4/1996 Japan .

Primary Examiner—Benjamin C. Lee
Attorney, Agent, or Firm—Burns, Doane, Swecker & Mathis, LLP

[57] **ABSTRACT**

A vehicle onboard device having characteristics capable of being changed communicates with a vehicle to set a characteristic value to an optimum value. Parameters for setting conditions of an electronic device are called out of an E²PROM 14_i of the vehicle 10_i and are transmitted to a technology center 40 via a dealer 20₁, and an information center 30₁. Each dealer 20₁, the information center 30₁, and the technology center 40 accumulate the parameters. The technology center 40 can collect the parameters of numerous vehicles and characteristic values for electronic control of each of the vehicles and can calculate newest and optimum parameters. The technology center 40 transmits this newest and optimum vehicle information to the vehicle 10_i, and each vehicle updates the parameters thereof to these newest and optimum parameters. Accordingly, the parameters of the vehicle are set as the newest parameters.

13 Claims, 15 Drawing Sheets

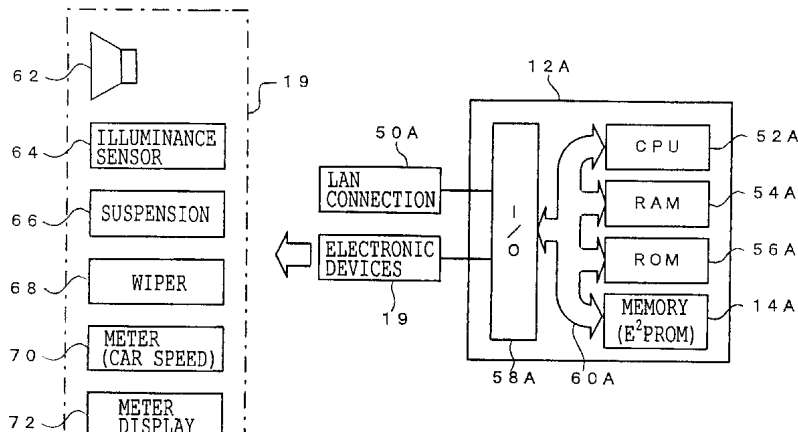


FIG. 1

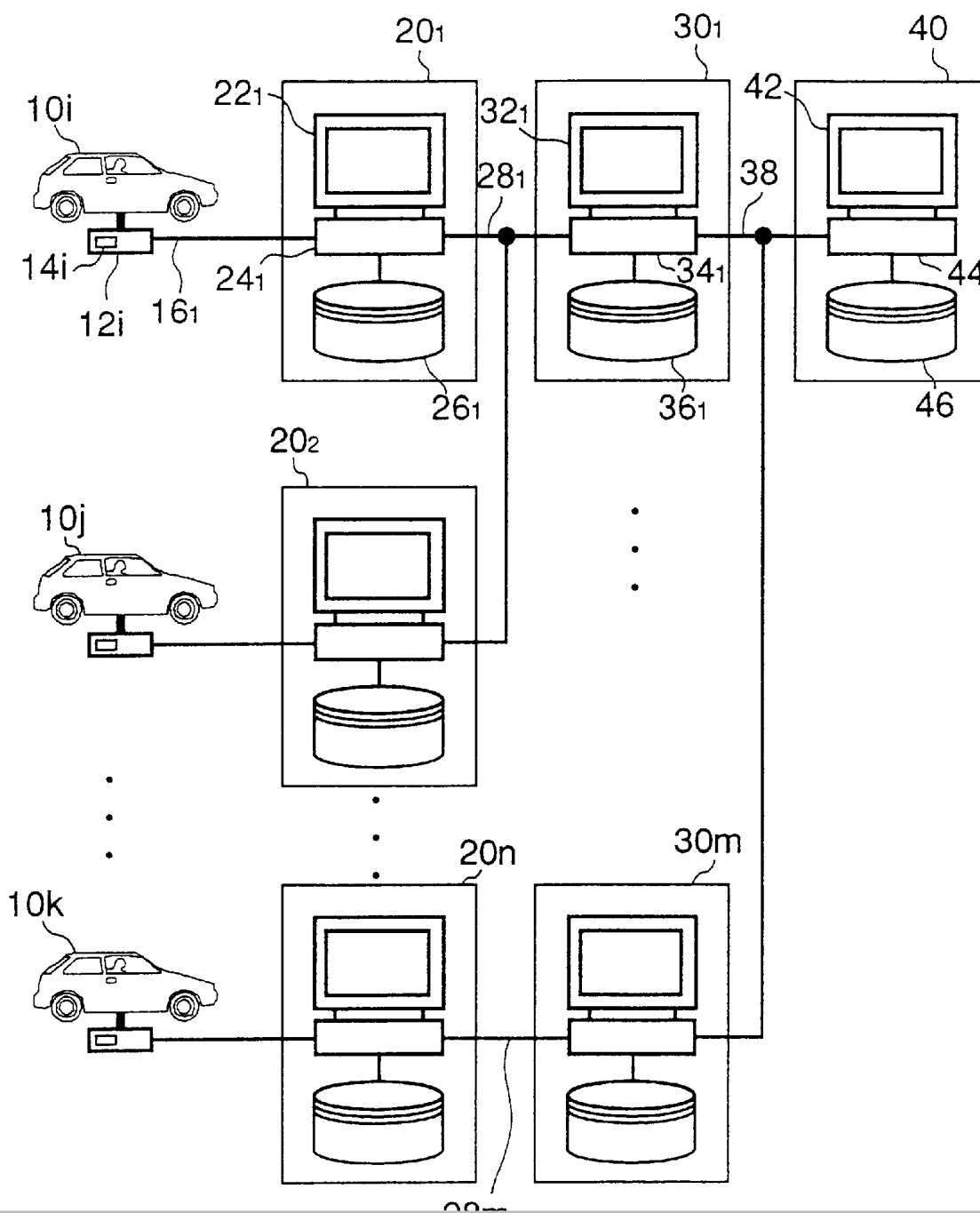


FIG. 2

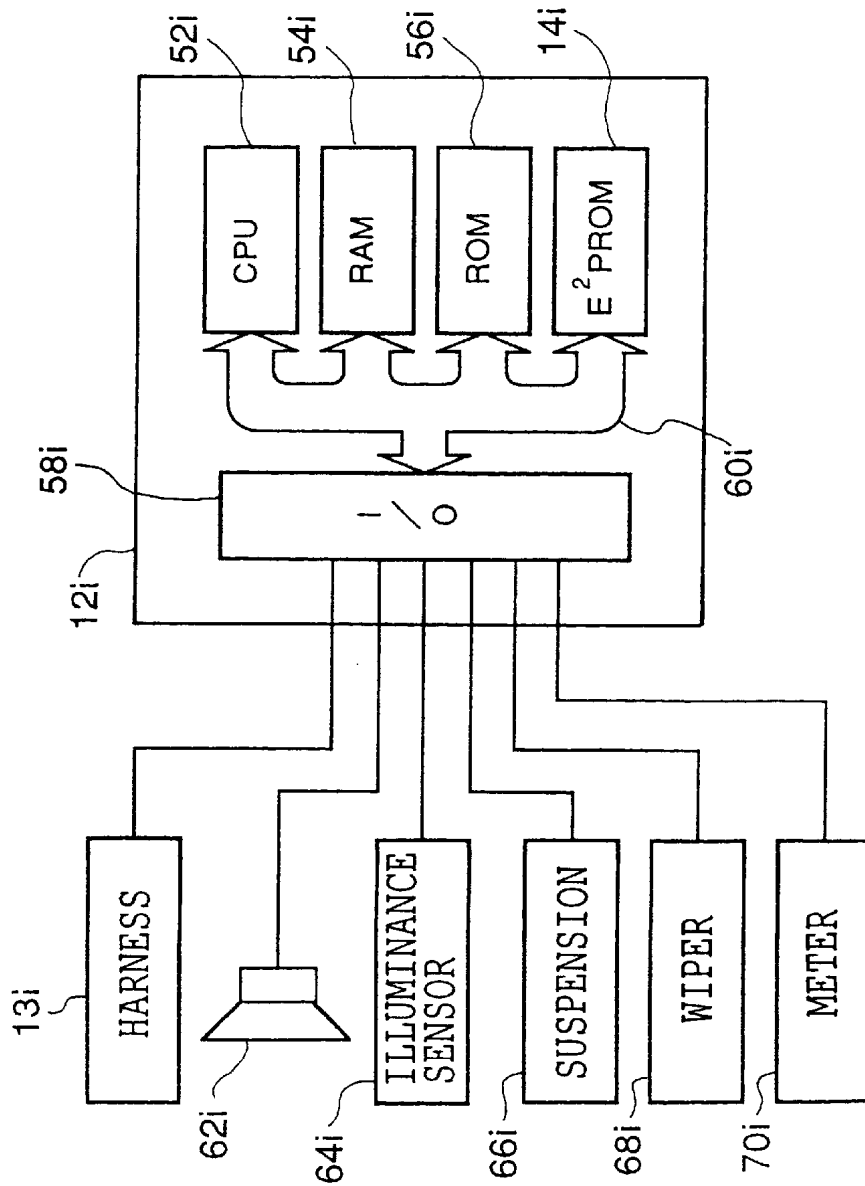


FIG. 3

PROCESSING IN VEHICLE ECU

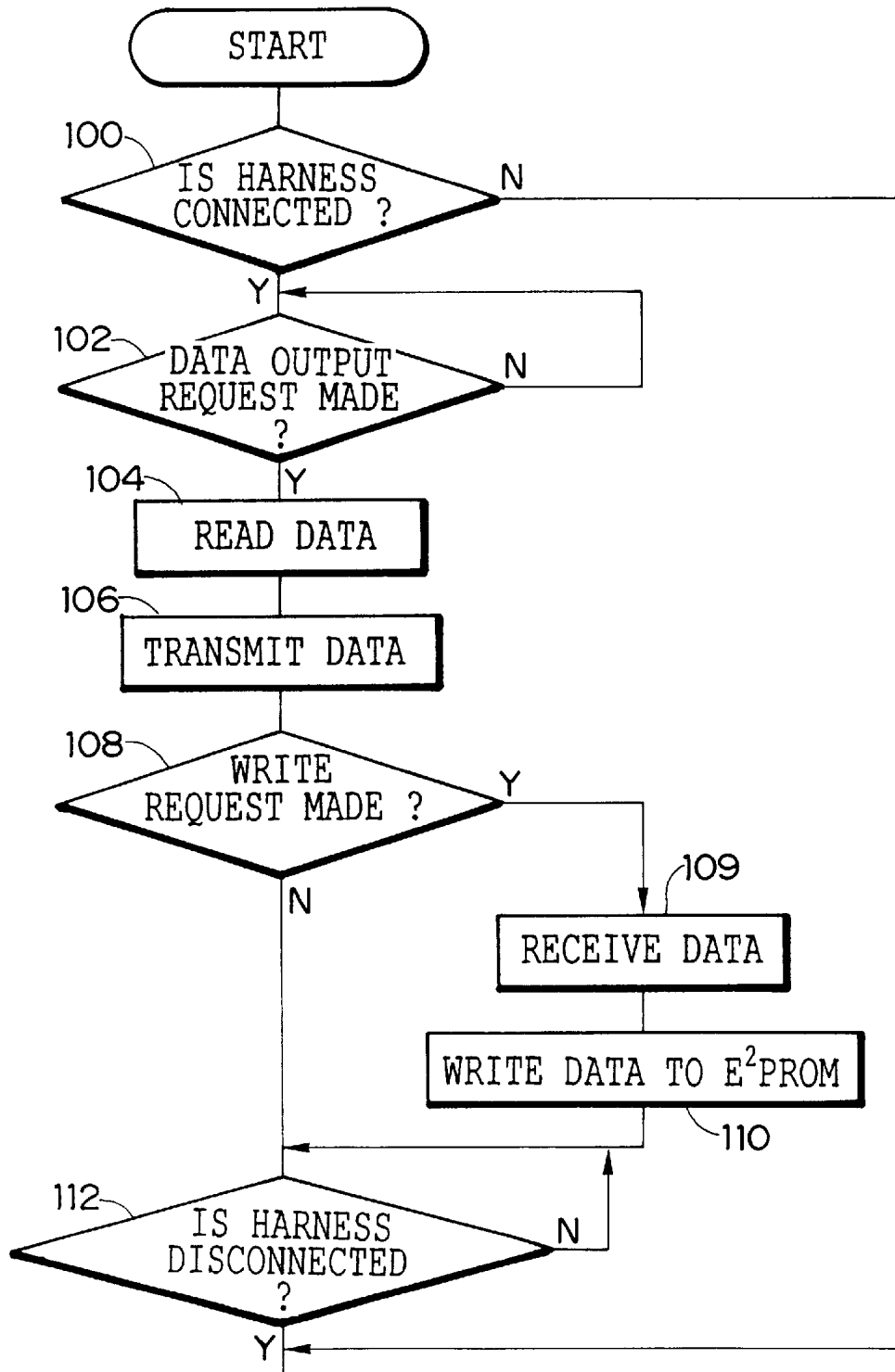
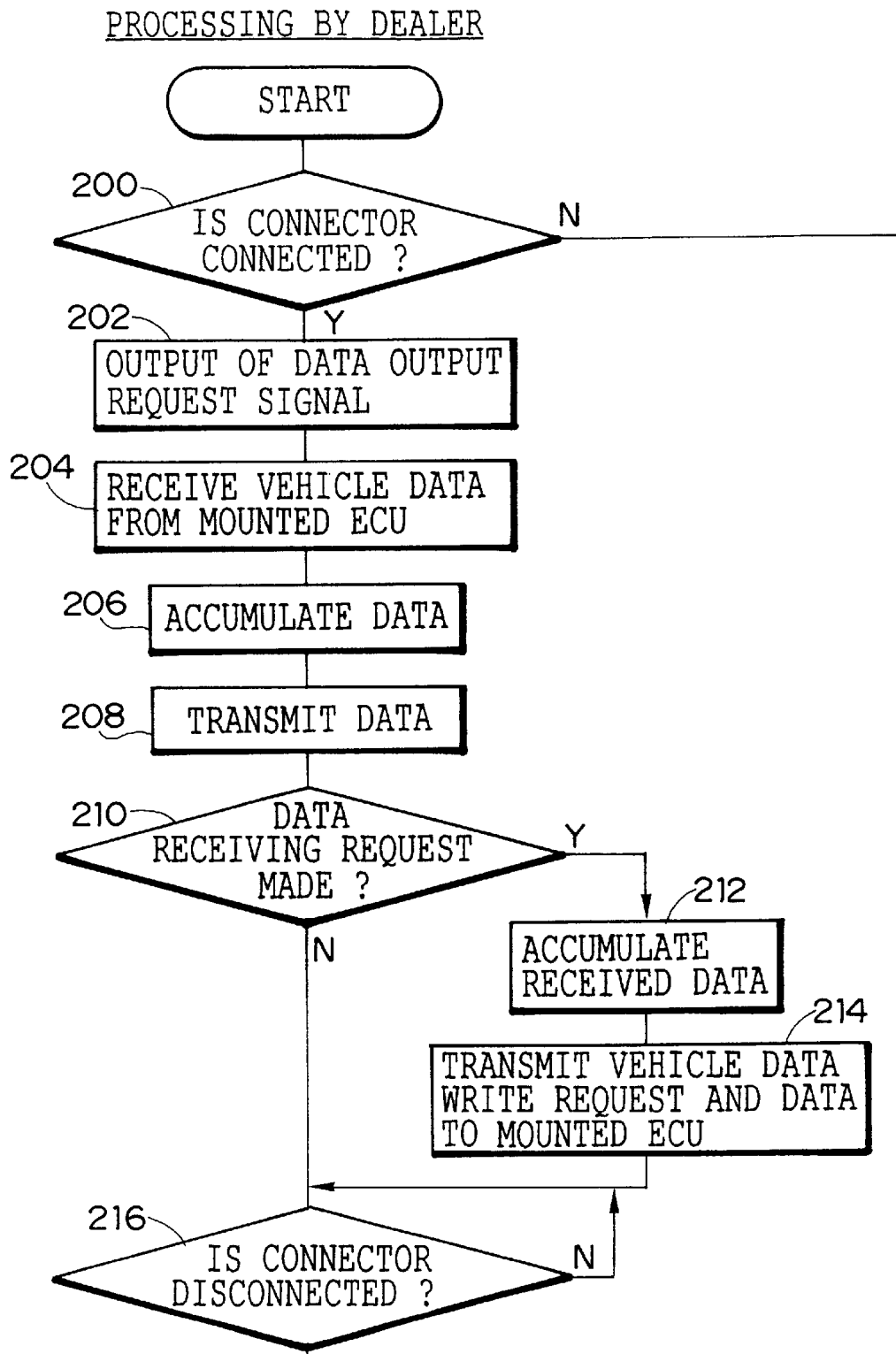


FIG. 4



Explore Litigation Insights

Docket Alarm provides insights to develop a more informed litigation strategy and the peace of mind of knowing you're on top of things.

Real-Time Litigation Alerts



Keep your litigation team up-to-date with **real-time alerts** and advanced team management tools built for the enterprise, all while greatly reducing PACER spend.

Our comprehensive service means we can handle Federal, State, and Administrative courts across the country.

Advanced Docket Research



With over 230 million records, Docket Alarm's cloud-native docket research platform finds what other services can't. Coverage includes Federal, State, plus PTAB, TTAB, ITC and NLRB decisions, all in one place.

Identify arguments that have been successful in the past with full text, pinpoint searching. Link to case law cited within any court document via Fastcase.

Analytics At Your Fingertips



Learn what happened the last time a particular judge, opposing counsel or company faced cases similar to yours.

Advanced out-of-the-box PTAB and TTAB analytics are always at your fingertips.

API

Docket Alarm offers a powerful API (application programming interface) to developers that want to integrate case filings into their apps.

LAW FIRMS

Build custom dashboards for your attorneys and clients with live data direct from the court.

Automate many repetitive legal tasks like conflict checks, document management, and marketing.

FINANCIAL INSTITUTIONS

Litigation and bankruptcy checks for companies and debtors.

E-DISCOVERY AND LEGAL VENDORS

Sync your system to PACER to automate legal marketing.