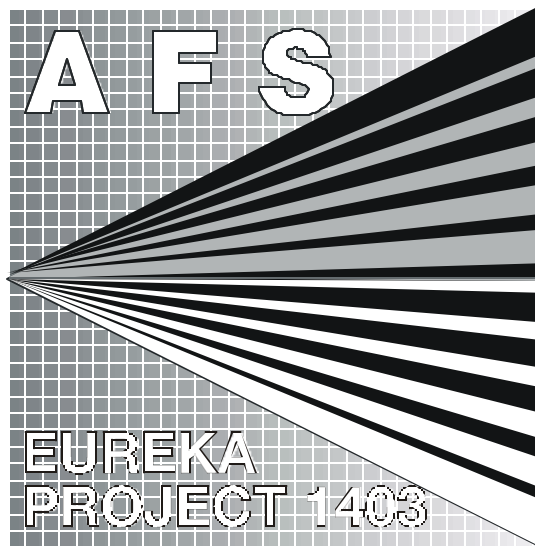


History and Scientific Back-up

Hanno Westermann
(AFS Secretary)



references:
TRANS/WP.29/GRE/2002/18 to 20

HW - April 30, 2002 - AFS/GRE/Back-up.PDF - 21 pages

Content

	page
1. The AFS Project	
- Project history and desirability of headlighting improvements	3
2. Glare and Visibility under night time traffic conditions	6
2.1 Glare from headlamps on traffic roads	6
2.2 Influence of lateral distance of glare sources on glare	7
2.3 Disability glare and visibility of pedestrians on straight traffic roads	9
2.4 Influence of the light emitting area on discomfort glare	11
2.5 Glare from headlamp reflexes on wet roads	12
2.6 Influence of vehicle inclination changes on glare	14
2.6.1 .. due to vehicle loading	14
2.6.2 .. due to vehicle dynamics	15
2.7 Glare reduction and visibility improvement on illuminated roads	16
2.8 Glare reduction and visibility improvement in curves	18
3. Photometric Requirements	
3.1 Co-ordinates for headlamp photometry	19
3.2 Specified values in the photometric tables	19
4. Vehicle appearance at night	21

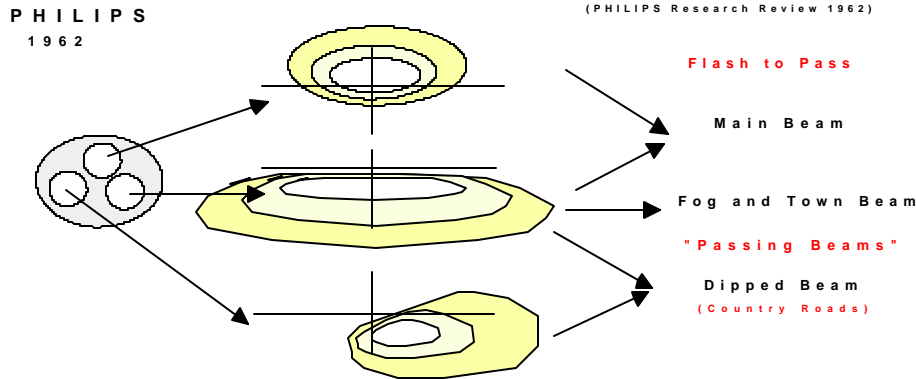
1. The AFS Project

- Project history and desirability of vehicle front lighting improvements

During the development within the Eureka project "VEDILIS" (Gas Discharge Light Sources) it became obvious that a single passing beam pattern can not provide an optimum lighting performance for all common road situations, particularly not in adverse weather conditions; it had to be a compromise. Already back in the 60th (see figure), attempts were made for adaptive beams, but the projects were stopped for missing technologies with respect to accuracies of light sources and reproduceability of mechanical levelling movements. However, headlamp levelling control was introduced in the 70th, be it by manual setting as a first step.

Multiple Use by Overlay

First Step in European Halogen Development



J.J. Balder, Iodine incandescent lamps, Philips Technical Review, Vol 23, No.8/9, 1961/2

In 1992, new technologies were available that would allow front lighting systems to adapt in lighting performance for different road and weather conditions. The partners of the VEDILIS project therefore decided to initiate a new EUREKA project "AFS" with the purpose to advance in the development of *adaptive front lighting systems* and overcome some major weaknesses of conventional passing beams.

In May 1993 the Eureka project status was granted. A value analysis and feasibility study of shortcomings of conventional front lighting revealed possibilities to improve visibility and comfort for typically adverse conditions. The consortium in the project was build from light source manufacturers, headlamp manufacturers and car makers from over the world.

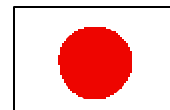
3 LIGHT SOURCE MANUFACTURERS

OSRAM
PHILIPS
GE-lighting

10 LIGHTING DEVICE MANUFACTURERS

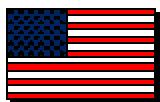
AUTOMOTIVE LIGHTING GUIDE-Corp.
HELLA
ICHIKOH
KOITO
VALÉO
SAMLIP
STANLEY
VISTEON
ZKW

JAPAN
KOREA



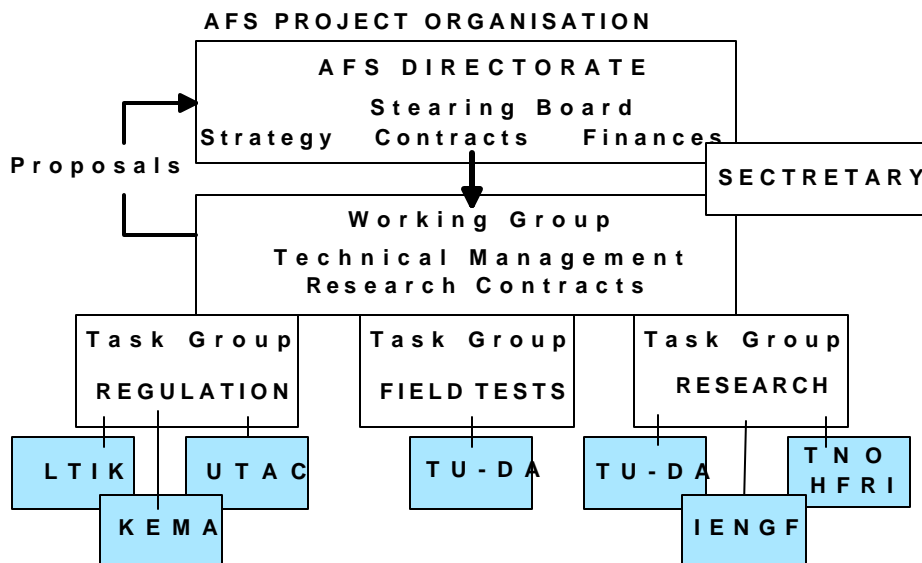
9 VEHICLE MANUFACTURERS

BMW
FIAT
DAIMLER-CHRYSLER
GM-OPEL
PEUGEOT
RENAULT
SAAB
VOLVO-cars
VW/AUDI



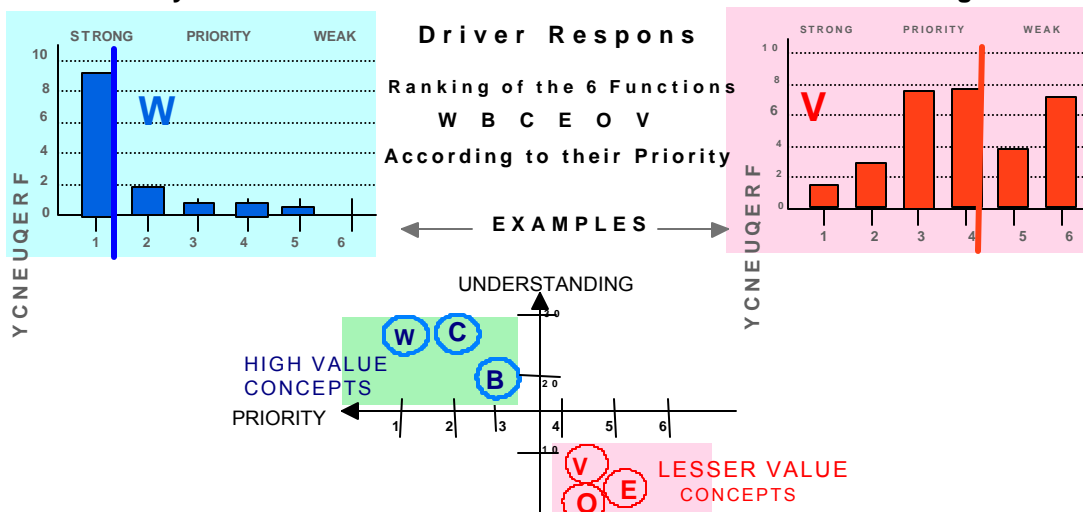
USA

The project structure was set up and work could begin.



First a marketing study was made to investigate the drivers' complaints and their wishes. Enquired for the wishfulness and priority of different options, the drivers in all age groups, female and male, wearing and not wearing glasses understood easily their advantage with an improvement for wet road lighting (W), improved passing beams (C) and bend lighting (B). For the latter a cost increase such as being paid for front fog lamps or even ABS was judged acceptable. The special visual conditions on town roads with public lighting (V), on motorways (E) and for overhead signs (O) found less understanding and were, accordingly, judged of lesser value.

**Marketing Research in D, F, I and S
Analysis of Preference and Understanding**



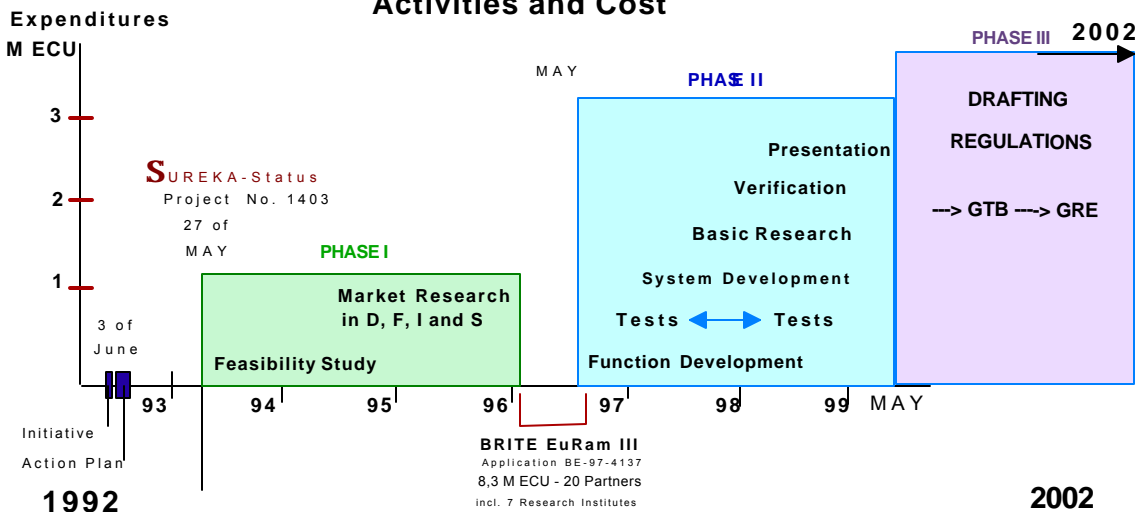
The results of the marketing study gave evidence to pursue the project and to allocate financial assets for the project. After more detail work in function development, the necessary research was specified and first prototype systems were made for field tests and to develop type approval procedures. The specified research included dynamic glare and the influence of shape, area and partition of the headlamps on glare as well as on vehicle appearance for other road users. Initially it was also planned to include road reflection research on dry and wet roads in different countries as well as statistical research on pedestrian reflection and on the statistical positions relative to the headlamps of targets such as road signs, pedestrians, rear view mirrors in the visual field.

The enormous cost involvement of such research and development (8 M €) was reason to apply for sponsorship within the framework of BRITE EuRam III - with 20 partners and 7 research institutes being involved. However, the application was denied and preference given to non automotive traffic projects. This was a loss of a year and urged to cut the research activities to a bearable budget. The research was dedicated to glare and appearance issues only and to the assistance of test houses in developing type approval procedures and the set up and evaluation of field tests.

The AFS systems were developed and designed to adapt the front lighting performance to particular environmental and traffic conditions. Such particularly differing conditions prevail on motorways, country and town roads and they prevail also in adverse weather such as fog, precipitation, wet roads and when driving on curved roads or cornering. For the special conditions in fog and cornering, special lamps are specified and regulated with adequate performances. They can be reciprocally incorporated in AFS systems. Their lighting performances, however, form no part of the AFS system requirements but of separate ECE Regulations.

The project targets (phase II) were finalised by May 1999. The results were presented and real scale test drives done at the Balocco test grounds by members of the participating industries and invited guests from national governments, GTB and GRE.

AFS Project Development Activities and Cost



During phase III of the project, the experiences and investigations were transformed into draft regulations that were approved by GTB at their 92nd session at Kyoto in 2001 and transmitted to GRE as working document in January 2002.

During the AFS phase II a special overhead sign lighting had also been developed and tested. During discussions in GTB it was omitted from the set of requirements since modern retroreflective traffic signs are adequately visible with spread light intensities of about 100 cd. Therefore no special lights were felt necessary.

This report summarises the research aspects that led to the requirements as specified in the draft documents for

- 1) a new AFS Regulation (TRANS/WP.29/GRE/2002/18 and 19) and
- 2) amendments for mounting and operating requirements of AFS systems in ECE Regulation No. 48 (TRANS/WP.29/GRE/2002/20).

Explore Litigation Insights

Docket Alarm provides insights to develop a more informed litigation strategy and the peace of mind of knowing you're on top of things.

Real-Time Litigation Alerts



Keep your litigation team up-to-date with **real-time alerts** and advanced team management tools built for the enterprise, all while greatly reducing PACER spend.

Our comprehensive service means we can handle Federal, State, and Administrative courts across the country.

Advanced Docket Research



With over 230 million records, Docket Alarm's cloud-native docket research platform finds what other services can't. Coverage includes Federal, State, plus PTAB, TTAB, ITC and NLRB decisions, all in one place.

Identify arguments that have been successful in the past with full text, pinpoint searching. Link to case law cited within any court document via Fastcase.

Analytics At Your Fingertips



Learn what happened the last time a particular judge, opposing counsel or company faced cases similar to yours.

Advanced out-of-the-box PTAB and TTAB analytics are always at your fingertips.

API

Docket Alarm offers a powerful API (application programming interface) to developers that want to integrate case filings into their apps.

LAW FIRMS

Build custom dashboards for your attorneys and clients with live data direct from the court.

Automate many repetitive legal tasks like conflict checks, document management, and marketing.

FINANCIAL INSTITUTIONS

Litigation and bankruptcy checks for companies and debtors.

E-DISCOVERY AND LEGAL VENDORS

Sync your system to PACER to automate legal marketing.