


TORONTO	ORLANDO	MARLBORO
<p style="text-align: center;"> <b>BIF</b>  <b>CRTC</b>  <b>DCP</b>  <b>DISPOUT</b>  <b>IDCT</b>  <b>LB</b>  <b>SCL</b>  <b>TVOUT</b>  <b>VGA</b>  <b>VIP</b> </p>	<p style="text-align: center;"> <b>CP</b>  <b>RBBM</b>  <b>VGT</b>  <b>PA</b>  <b>SC</b> </p>	<p style="text-align: center;"> <b>SQ</b>  <b>SP</b>  <b>SX</b>  <b>MH/MC</b>  <b>RB</b>  <b>RC</b>  <b>TC/TP</b>  <b>CG</b>  <b>IO</b>  <b>TST/DBG</b>  <b>ROM</b> </p>
<p style="text-align: center;"><b>System Tests</b></p>	<p style="text-align: center;"> <b>Real Time Streams</b>  <b>Motion Comp.</b>  <b>Performance</b>  <b>System Tests</b> </p>	<p style="text-align: center;"><b>Performance System Tests</b></p>

<b>Block</b>	<b>PA</b>	<b>SC</b>	<b>VGT</b>	<b>CP</b>
Approx. Violations	~4000	~4000	~600	~2000
Worst Violations	1.05 nS	0.62 nSec	0.57 nSec	0.37 nSe
Synth Logic Area	2.655 sqmm	5.68 sqmm	0.807 sqmm	2.686 sqn
Macro Area	0.58 sqmm	0.57 sqmm	0.332 sqmm	1.497 sqn
Est. Post Route	4.37 sqmm	8.69 sqmm	1.485 sqmm	5.334 sqn

# ATI Re-use Flow

Linking

Marlboro Frontend  Santa Clara Backend

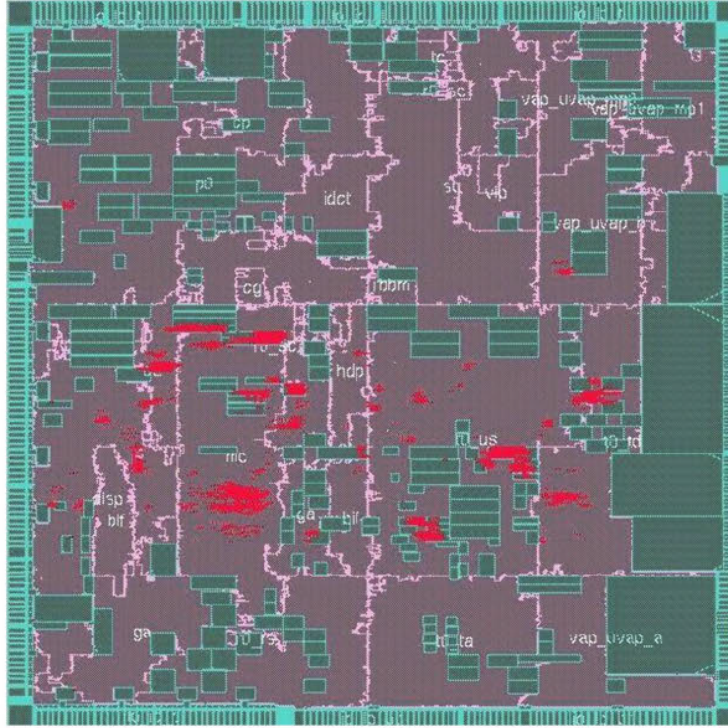
## New Re-use Flow Advantages

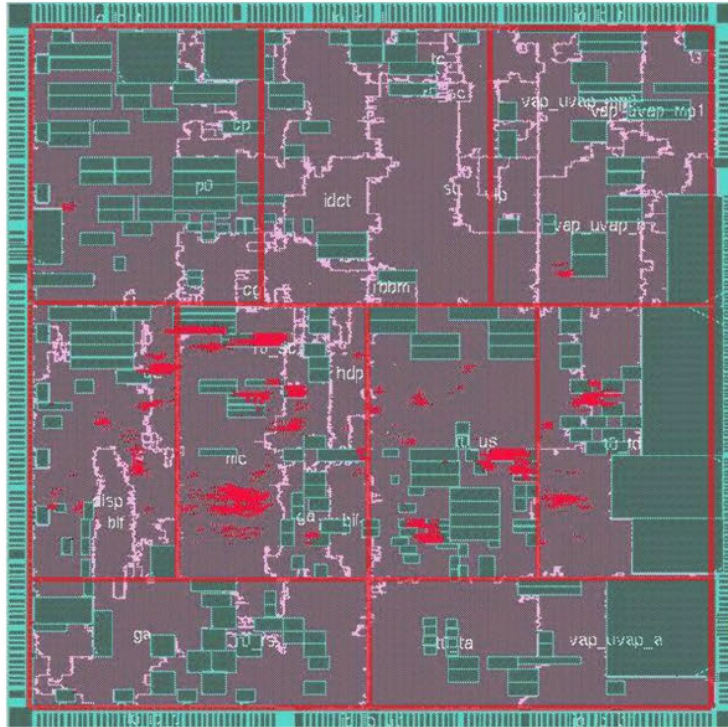
- Tile re-use
  - 20 tiles need 20 PD people, re-use allows fewer tiles/people
- Greater schedule predictability
- Paper/pencil floorplanning chores replaced by automation
  - Interactive viewer shows signal flylines, route congestion
  - Timing budgeting, tile creation and pin optimization
  - Repeater buffer and power grid insertion
- Late design changes made more easily, helping schedule
- Floorplanner is important product for Cadence, we will get good support

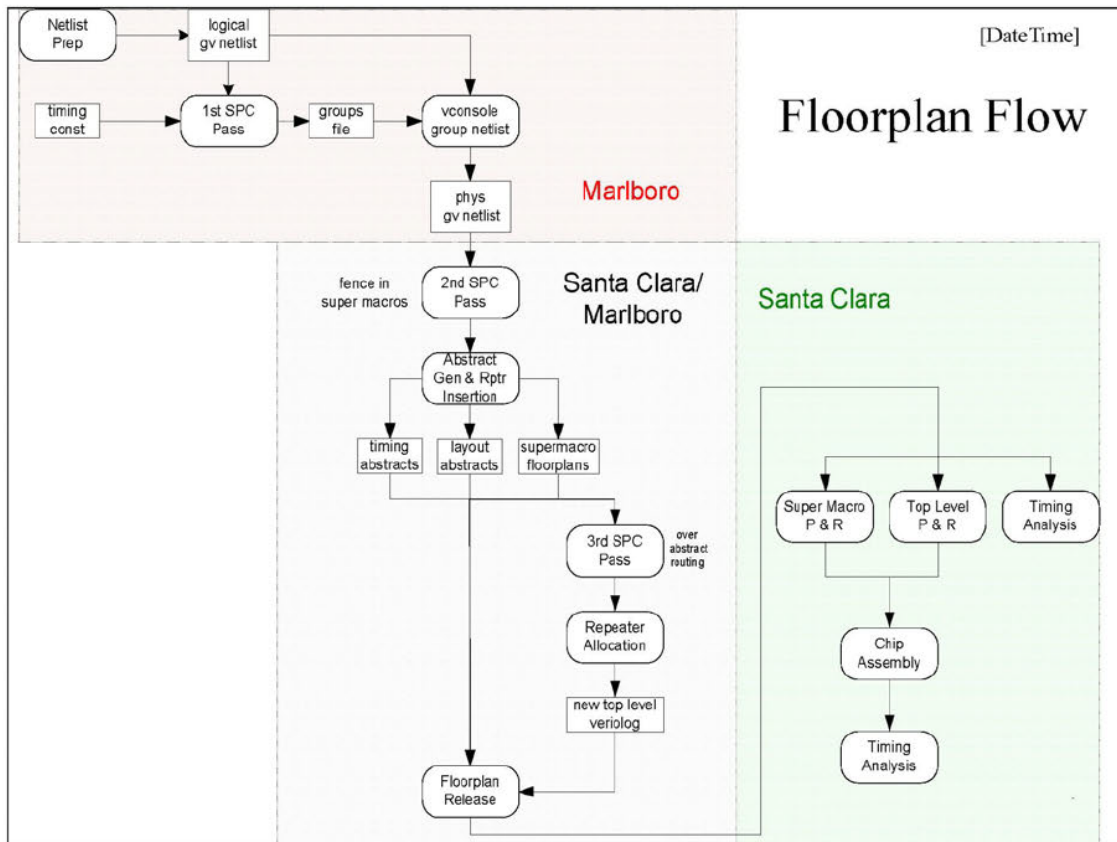
## Risk

- Partially new design flow
- Outside vendor tool

2

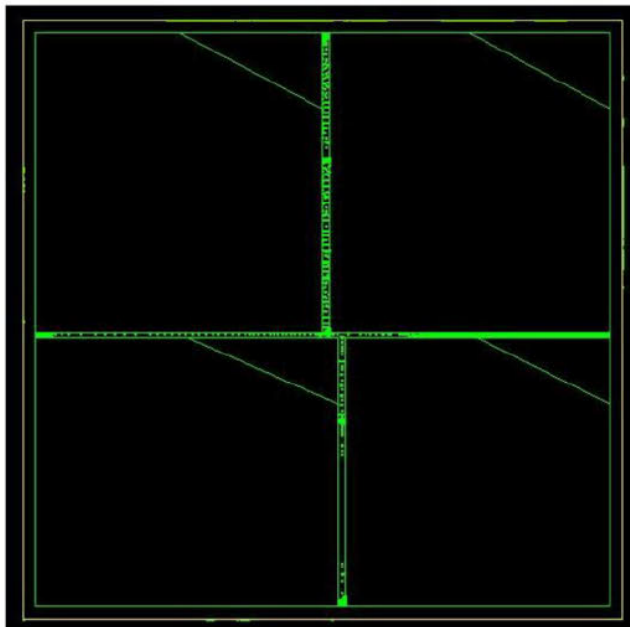






# SC Chip – Top Level, 4 Tiles

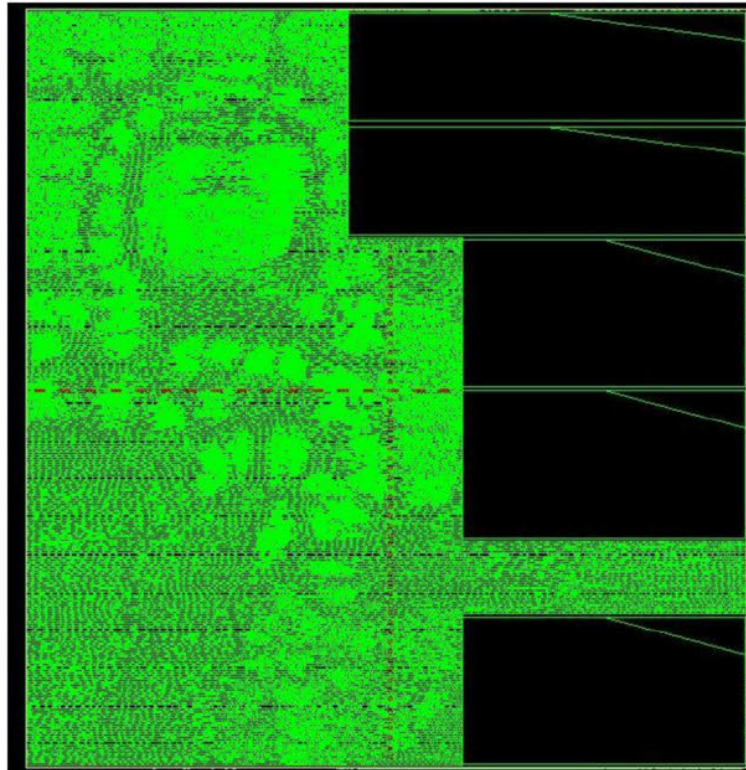
[Date:Time]





# SC Chip – One Tile Detail

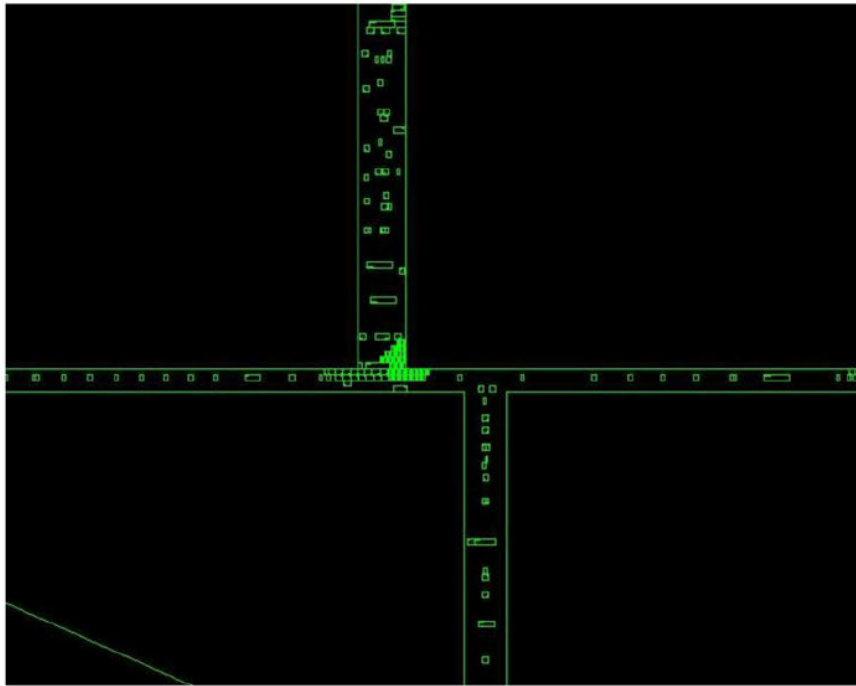
[Date:Time]



7

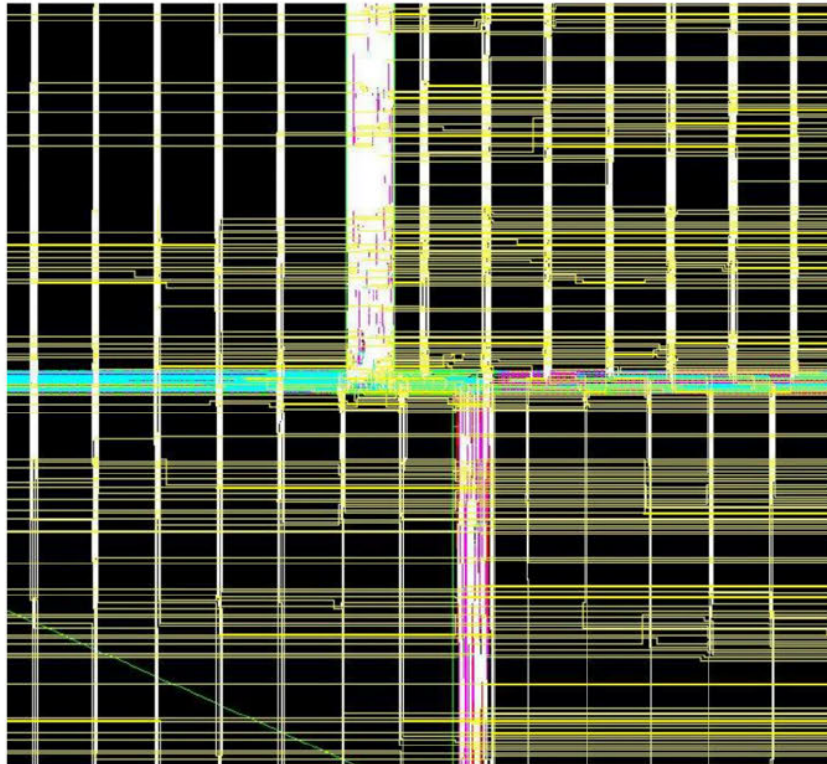
# SC Chip – Top Level Cells

[Date:Time]



# SC Chip – Top Level Route

[Date:Time]



9

# Floorplan Flow Status

- Small chip “SC” testcase run through entire PD flow
- RV350 run through first 2 floorplan passes, ready for P&R
- Goal is to have RV350 done end Sept. to validate flow
- Goal is to have entire flow ready for R400 end of Sept.
- R400 netlist in Santa Clara, s/w now at Marlboro. First pass floorplan work can start when libraries available.

```

+-----+
+-----+
+ R400 EMU TEST REGRESS HISTORY Tue Sep  3 22:11:47 2002
+-----+
+-----+
+ No  Test Name                               Emu Time Sync  Status
LastPass FailReason           MostRecentPath +
+-----+
+-----+
  1 r400sc_bres_cntl_01                       00:00:12 49241 PASS    49241
    \\fl_mkelly2\d\r400\regress/49241_020903101448/r400sc_bres_cntl_01

  2 r400sc_bres_cntl_02                       00:00:24 49241 PASS    49241
    \\fl_mkelly2\d\r400\regress/49241_020903101448/r400sc_bres_cntl_02

  3 r400sc_bres_cntl_03                       00:00:27 49241 PASS    49241
    \\fl_mkelly2\d\r400\regress/49241_020903101448/r400sc_bres_cntl_03

  4 r400sc_bres_cntl_04                       00:00:27 49241 PASS    49241
    \\fl_mkelly2\d\r400\regress/49241_020903101448/r400sc_bres_cntl_04

  5 r400sc_clip_rect_01                      00:00:16 49241 PASS    49241
    \\fl_mkelly2\d\r400\regress/49241_020903101448/r400sc_clip_rect_01

  6 r400sc_clip_rect_02                      00:00:16 49241 PASS    49241
    \\fl_mkelly2\d\r400\regress/49241_020903101448/r400sc_clip_rect_02

  7 r400sc_clip_rect_03                      00:00:16 49241 PASS    49241
    \\fl_mkelly2\d\r400\regress/49241_020903101448/r400sc_clip_rect_03

  8 r400sc_clip_rect_04                      00:00:16 49241 PASS    49241
    \\fl_mkelly2\d\r400\regress/49241_020903101448/r400sc_clip_rect_04

  9 r400sc_clip_rect_fc_01                   00:00:09 49241 PASS    49241
    \\fl_mkelly2\d\r400\regress/49241_020903101448/r400sc_clip_rect_fc_01

 10 r400sc_diamond_exit_01                   00:00:10 49241 PASS    49241
    \\fl_mkelly2\d\r400\regress/49241_020903101448/r400sc_diamond_exit_01

 11 r400sc_diamond_exit_02                   00:00:09 49241 PASS    49241
    \\fl_mkelly2\d\r400\regress/49241_020903101448/r400sc_diamond_exit_02

 12 r400sc_diamond_exit_03                   00:00:10 49241 PASS    49241
    \\fl_mkelly2\d\r400\regress/49241_020903101448/r400sc_diamond_exit_03

 13 r400sc_diamond_exit_04                   00:00:10 49241 PASS    49241
    \\fl_mkelly2\d\r400\regress/49241_020903101448/r400sc_diamond_exit_04

```

AMD1044\_0185652

14	r400sc_diamond_exit_05	00:00:10	49241	PASS	49241	\\fl_mkelly2\d\r400\regress\49241_020903101448\r400sc_diamond_exit_05
15	r400sc_jss_1x2_01	00:00:10	49241	PASS	49241	\\fl_mkelly2\d\r400\regress\49241_020903101448\r400sc_jss_1x2_01
16	r400sc_jss_1x2_02	00:00:10	49241	PASS	49241	\\fl_mkelly2\d\r400\regress\49241_020903101448\r400sc_jss_1x2_02
17	r400sc_jss_1x3_01	00:00:10	49241	PASS	49241	\\fl_mkelly2\d\r400\regress\49241_020903101448\r400sc_jss_1x3_01
18	r400sc_jss_1x3_02	00:00:22	49241	PASS	49241	\\fl_mkelly2\d\r400\regress\49241_020903101448\r400sc_jss_1x3_02
19	r400sc_jss_1x4_01	00:00:10	49241	PASS	49241	\\fl_mkelly2\d\r400\regress\49241_020903101448\r400sc_jss_1x4_01
20	r400sc_jss_1x4_02	00:00:12	49241	PASS	49241	\\fl_mkelly2\d\r400\regress\49241_020903101448\r400sc_jss_1x4_02
21	r400sc_jss_2x1_01	00:00:10	49241	PASS	49241	\\fl_mkelly2\d\r400\regress\49241_020903101448\r400sc_jss_2x1_01
22	r400sc_jss_2x1_02	00:00:11	49241	PASS	49241	\\fl_mkelly2\d\r400\regress\49241_020903101448\r400sc_jss_2x1_02
23	r400sc_jss_2x2_01	00:00:10	49241	PASS	49241	\\fl_mkelly2\d\r400\regress\49241_020903101448\r400sc_jss_2x2_01
24	r400sc_jss_2x2_02	00:00:12	49241	PASS	49241	\\fl_mkelly2\d\r400\regress\49241_020903101448\r400sc_jss_2x2_02
25	r400sc_jss_2x3_01	00:00:10	49241	PASS	49241	\\fl_mkelly2\d\r400\regress\49241_020903101448\r400sc_jss_2x3_01
26	r400sc_jss_2x3_02	00:00:13	49241	PASS	49241	\\fl_mkelly2\d\r400\regress\49241_020903101448\r400sc_jss_2x3_02
27	r400sc_jss_2x4_01	00:00:10	49241	PASS	49241	\\fl_mkelly2\d\r400\regress\49241_020903101448\r400sc_jss_2x4_01
28	r400sc_jss_2x4_02	00:00:23	49241	PASS	49241	\\fl_mkelly2\d\r400\regress\49241_020903101448\r400sc_jss_2x4_02
29	r400sc_jss_3x1_01	00:00:10	49241	PASS	49241	\\fl_mkelly2\d\r400\regress\49241_020903101448\r400sc_jss_3x1_01

AMD1044\_0185653

30 r400sc\_jss\_3x1\_02 00:00:11 49241 PASS 49241  
\\fl\_mkelly2\d\r400\regress/49241\_020903101448/r400sc\_jss\_3x1\_02

31 r400sc\_jss\_3x2\_01 00:00:10 49241 PASS 49241  
\\fl\_mkelly2\d\r400\regress/49241\_020903101448/r400sc\_jss\_3x2\_01

32 r400sc\_jss\_3x2\_02 00:00:13 49241 PASS 49241  
\\fl\_mkelly2\d\r400\regress/49241\_020903101448/r400sc\_jss\_3x2\_02

33 r400sc\_jss\_3x3\_01 00:00:10 49241 PASS 49241  
\\fl\_mkelly2\d\r400\regress/49241\_020903101448/r400sc\_jss\_3x3\_01

34 r400sc\_jss\_3x3\_02 00:00:15 49241 PASS 49241  
\\fl\_mkelly2\d\r400\regress/49241\_020903101448/r400sc\_jss\_3x3\_02

35 r400sc\_jss\_3x4\_01 00:00:10 49241 PASS 49241  
\\fl\_mkelly2\d\r400\regress/49241\_020903101448/r400sc\_jss\_3x4\_01

36 r400sc\_jss\_3x4\_02 00:00:10 49241 PASS 49241  
\\fl\_mkelly2\d\r400\regress/49241\_020903101448/r400sc\_jss\_3x4\_02

37 r400sc\_jss\_3x4\_03 00:00:16 49241 PASS 49241  
\\fl\_mkelly2\d\r400\regress/49241\_020903101448/r400sc\_jss\_3x4\_03

38 r400sc\_jss\_4x1\_01 00:00:16 49241 PASS 49241  
\\fl\_mkelly2\d\r400\regress/49241\_020903101448/r400sc\_jss\_4x1\_01

39 r400sc\_jss\_4x1\_02 00:00:11 49241 PASS 49241  
\\fl\_mkelly2\d\r400\regress/49241\_020903101448/r400sc\_jss\_4x1\_02

40 r400sc\_jss\_4x2\_01 00:00:11 49241 PASS 49241  
\\fl\_mkelly2\d\r400\regress/49241\_020903101448/r400sc\_jss\_4x2\_01

41 r400sc\_jss\_4x2\_02 00:00:14 49241 PASS 49241  
\\fl\_mkelly2\d\r400\regress/49241\_020903101448/r400sc\_jss\_4x2\_02

42 r400sc\_jss\_4x3\_01 00:00:11 49241 PASS 49241  
\\fl\_mkelly2\d\r400\regress/49241\_020903101448/r400sc\_jss\_4x3\_01

43 r400sc\_jss\_4x3\_02 00:00:16 49241 PASS 49241  
\\fl\_mkelly2\d\r400\regress/49241\_020903101448/r400sc\_jss\_4x3\_02

44 r400sc\_jss\_4x4\_01 00:00:11 49241 PASS 49241  
\\fl\_mkelly2\d\r400\regress/49241\_020903101448/r400sc\_jss\_4x4\_01

45 r400sc\_jss\_4x4\_02 00:00:18 49241 PASS 49241  
\\fl\_mkelly2\d\r400\regress/49241\_020903101448/r400sc\_jss\_4x4\_02

AMD1044\_0185654

46	r400sc_jss_4x4_03	00:00:10	49241	PASS	49241
	\\fl_mkelly2\d\r400\regress\49241_020903101448\r400sc_jss_4x4_03				
47	r400sc_jss_4x4_aa_mask_01	00:00:19	49241	PASS	49241
	\\fl_mkelly2\d\r400\regress\49241_020903101448\r400sc_jss_4x4_aa_mask_01				
48	r400sc_jss_4x4_aa_mask_02	00:01:17	49241	PASS	49241
	\\fl_mkelly2\d\r400\regress\49241_020903101448\r400sc_jss_4x4_aa_mask_02				
49	r400sc_jss_4x4_fc_01	00:00:11	49241	PASS	49241
	\\fl_mkelly2\d\r400\regress\49241_020903101448\r400sc_jss_4x4_fc_01				
50	r400sc_jss_4x4_fc_02	00:00:13	49241	PASS	49241
	\\fl_mkelly2\d\r400\regress\49241_020903101448\r400sc_jss_4x4_fc_02				
51	r400sc_jss_4x4_max_dist_01	00:00:09	49241	PASS	49241
	\\fl_mkelly2\d\r400\regress\49241_020903101448\r400sc_jss_4x4_max_dist_01				
52	r400sc_line_dx10_eq_0_01	00:00:09	49241	PASS	49241
	\\fl_mkelly2\d\r400\regress\49241_020903101448\r400sc_line_dx10_eq_0_01				
53	r400sc_line_dx10_ge_0_01	00:00:10	49241	PASS	49241
	\\fl_mkelly2\d\r400\regress\49241_020903101448\r400sc_line_dx10_ge_0_01				
54	r400sc_line_dx10_lt_0_01	00:00:10	49241	PASS	49241
	\\fl_mkelly2\d\r400\regress\49241_020903101448\r400sc_line_dx10_lt_0_01				
55	r400sc_line_dy10_eq_0_01	00:00:10	49241	PASS	49241
	\\fl_mkelly2\d\r400\regress\49241_020903101448\r400sc_line_dy10_eq_0_01				
56	r400sc_line_dy10_ge_0_01	00:00:10	49241	PASS	49241
	\\fl_mkelly2\d\r400\regress\49241_020903101448\r400sc_line_dy10_ge_0_01				
57	r400sc_line_dy10_lt_0_01	00:00:10	49241	PASS	49241
	\\fl_mkelly2\d\r400\regress\49241_020903101448\r400sc_line_dy10_lt_0_01				
58	r400sc_line_expand_width_msaa_8_01	00:00:17	49241	PASS	49241
	\\fl_mkelly2\d\r400\regress\49241_020903101448\r400sc_line_expand_width_msaa_8_01				
59	r400sc_line_expand_width_msaa_8_02	00:00:19	49241	PASS	49241
	\\fl_mkelly2\d\r400\regress\49241_020903101448\r400sc_line_expand_width_msaa_8_02				
60	r400sc_line_expand_width_msaa_8_03	00:00:18	49241	PASS	49241
	\\fl_mkelly2\d\r400\regress\49241_020903101448\r400sc_line_expand_width_msaa_8_03				
61	r400sc_line_jss_3x4_01	00:00:10	49241	PASS	49241
	\\fl_mkelly2\d\r400\regress\49241_020903101448\r400sc_line_jss_3x4_01				

AMD1044\_0185655



62	r400sc_line_list_01	00:00:10	49241	PASS	49241
	\\fl_mkelly2\d\r400\regress\49241_020903101448\r400sc_line_list_01				
63	r400sc_line_list_02	00:00:10	49241	FAIL	
	gold or cmp file mis				
64	r400sc_line_list_concentric_circle_01	00:00:16	49241	PASS	49241
	\\fl_mkelly2\d\r400\regress\49241_020903101448\r400sc_line_list_concentric_circle_01				
65	r400sc_line_list_concentric_circle_02	00:00:33	49241	PASS	49241
	\\fl_mkelly2\d\r400\regress\49241_020903101448\r400sc_line_list_concentric_circle_02				
66	r400sc_line_list_concentric_circle_03	00:00:32	49241	PASS	49241
	\\fl_mkelly2\d\r400\regress\49241_020903101448\r400sc_line_list_concentric_circle_03				
67	r400sc_line_list_verify_st_01	00:00:10	49241	PASS	49241
	\\fl_mkelly2\d\r400\regress\49241_020903101448\r400sc_line_list_verify_st_01				
68	r400sc_line_msa_8_01	00:00:10	49241	PASS	49241
	\\fl_mkelly2\d\r400\regress\49241_020903101448\r400sc_line_msa_8_01				
69	r400sc_line_stipple_01	00:00:10	49241	PASS	49241
	\\fl_mkelly2\d\r400\regress\49241_020903101448\r400sc_line_stipple_01				
70	r400sc_line_stipple_02	00:00:10	49241	PASS	49241
	\\fl_mkelly2\d\r400\regress\49241_020903101448\r400sc_line_stipple_02				
71	r400sc_line_stipple_03	00:00:10	49241	PASS	49241
	\\fl_mkelly2\d\r400\regress\49241_020903101448\r400sc_line_stipple_03				
72	r400sc_line_stipple_04	00:00:09	49241	PASS	49241
	\\fl_mkelly2\d\r400\regress\49241_020903101448\r400sc_line_stipple_04				
73	r400sc_line_stipple_05	00:00:10	49241	PASS	49241
	\\fl_mkelly2\d\r400\regress\49241_020903101448\r400sc_line_stipple_05				
74	r400sc_line_stipple_06	00:00:10	49241	PASS	49241
	\\fl_mkelly2\d\r400\regress\49241_020903101448\r400sc_line_stipple_06				
75	r400sc_line_stipple_07	00:00:30	49241	PASS	49241
	\\fl_mkelly2\d\r400\regress\49241_020903101448\r400sc_line_stipple_07				
76	r400sc_line_stipple_08	00:00:19	49241	PASS	49241
	\\fl_mkelly2\d\r400\regress\49241_020903101448\r400sc_line_stipple_08				
77	r400sc_line_stipple_09	00:00:18	49241	PASS	49241
	\\fl_mkelly2\d\r400\regress\49241_020903101448\r400sc_line_stipple_09				

AMD1044\_0185656

78	r400sc_line_stipple_fc_08	00:00:10	49241	PASS	49241
\\fl_mkelly2\d\r400\regress\49241_020903101448\r400sc_line_stipple_fc_08					
79	r400sc_line_strip_stipple_01	00:00:10	49241	PASS	49241
\\fl_mkelly2\d\r400\regress\49241_020903101448\r400sc_line_strip_stipple_01					
80	r400sc_msaa_1_01	00:00:14	49241	PASS	49241
\\fl_mkelly2\d\r400\regress\49241_020903101448\r400sc_msaa_1_01					
81	r400sc_msaa_4_01	00:00:14	49241	PASS	49241
\\fl_mkelly2\d\r400\regress\49241_020903101448\r400sc_msaa_4_01					
82	r400sc_msaa_6_01	00:00:14	49241	PASS	49241
\\fl_mkelly2\d\r400\regress\49241_020903101448\r400sc_msaa_6_01					
83	r400sc_msaa_8_01	00:00:14	49241	PASS	49241
\\fl_mkelly2\d\r400\regress\49241_020903101448\r400sc_msaa_8_01					
84	r400sc_msaa_8_aa_mask_01	00:00:14	49241	PASS	49241
\\fl_mkelly2\d\r400\regress\49241_020903101448\r400sc_msaa_8_aa_mask_01					
85	r400sc_msaa_8_aa_mask_02	00:00:29	49241	PASS	49241
\\fl_mkelly2\d\r400\regress\49241_020903101448\r400sc_msaa_8_aa_mask_02					
86	r400sc_msaa_8_aa_mask_fc_02	00:00:12	49241	PASS	49241
\\fl_mkelly2\d\r400\regress\49241_020903101448\r400sc_msaa_8_aa_mask_fc_02					
87	r400sc_null_triangles_01	00:00:14	49241	PASS	49241
\\fl_mkelly2\d\r400\regress\49241_020903101448\r400sc_null_triangles_01					
88	r400sc_null_triangles_fc_01	00:00:10	49241	PASS	49241
\\fl_mkelly2\d\r400\regress\49241_020903101448\r400sc_null_triangles_fc_01					
89	r400sc_point_jss_3x4_01	00:00:10	49241	PASS	49241
\\fl_mkelly2\d\r400\regress\49241_020903101448\r400sc_point_jss_3x4_01					
90	r400sc_point_list_01	00:00:30	49241	PASS	49241
\\fl_mkelly2\d\r400\regress\49241_020903101448\r400sc_point_list_01					
91	r400sc_point_list_02	00:00:14	49241	PASS	49241
\\fl_mkelly2\d\r400\regress\49241_020903101448\r400sc_point_list_02					
92	r400sc_point_list_03	00:00:11	49241	PASS	49241
\\fl_mkelly2\d\r400\regress\49241_020903101448\r400sc_point_list_03					
93	r400sc_point_list_04	00:00:27	49241	PASS	49241
\\fl_mkelly2\d\r400\regress\49241_020903101448\r400sc_point_list_04					

AMD1044\_0185657

94	r400sc_point_list_05	00:00:12	49241	PASS	49241
\\fl_mkelly2\d\r400\regress\49241_020903101448\r400sc_point_list_05					
95	r400sc_point_list_07	00:00:09	49241	PASS	49241
\\fl_mkelly2\d\r400\regress\49241_020903101448\r400sc_point_list_07					
96	r400sc_point_list_08	00:00:10	49241	PASS	49241
\\fl_mkelly2\d\r400\regress\49241_020903101448\r400sc_point_list_08					
97	r400sc_point_list_09	00:00:10	49241	PASS	49241
\\fl_mkelly2\d\r400\regress\49241_020903101448\r400sc_point_list_09					
98	r400sc_point_msaa_8_01	00:00:13	49241	PASS	49241
\\fl_mkelly2\d\r400\regress\49241_020903101448\r400sc_point_msaa_8_01					
99	r400sc_poly_offset_01	00:00:09	49241	PASS	49241
\\fl_mkelly2\d\r400\regress\49241_020903101448\r400sc_poly_offset_01					
100	r400sc_poly_offset_02	00:00:17	49241	PASS	49241
\\fl_mkelly2\d\r400\regress\49241_020903101448\r400sc_poly_offset_02					
101	r400sc_poly_offset_fc_01	00:00:10	49241	PASS	49241
\\fl_mkelly2\d\r400\regress\49241_020903101448\r400sc_poly_offset_fc_01					
102	r400sc_polygon_stipple_01	00:00:17	49241	PASS	49241
\\fl_mkelly2\d\r400\regress\49241_020903101448\r400sc_polygon_stipple_01					
103	r400sc_prsp_byc_intrp_ref_pix_01	00:00:22	49241	PASS	49241
\\fl_mkelly2\d\r400\regress\49241_020903101448\r400sc_prsp_byc_intrp_ref_pix_01					
104	r400sc_prsp_byc_intrp_ref_pix_02	00:00:10	49241	PASS	49241
\\fl_mkelly2\d\r400\regress\49241_020903101448\r400sc_prsp_byc_intrp_ref_pix_02					
105	r400sc_prsp_byc_intrp_ref_pix_03	00:00:10	49241	PASS	49241
\\fl_mkelly2\d\r400\regress\49241_020903101448\r400sc_prsp_byc_intrp_ref_pix_03					
106	r400sc_prsp_byc_intrp_ref_pix_04	00:00:10	49241	PASS	49241
\\fl_mkelly2\d\r400\regress\49241_020903101448\r400sc_prsp_byc_intrp_ref_pix_04					
107	r400sc_prsp_byc_intrp_ref_pix_05	00:00:10	49241	PASS	49241
\\fl_mkelly2\d\r400\regress\49241_020903101448\r400sc_prsp_byc_intrp_ref_pix_05					
108	r400sc_prsp_byc_intrp_ref_pix_06	00:00:10	49241	PASS	49241
\\fl_mkelly2\d\r400\regress\49241_020903101448\r400sc_prsp_byc_intrp_ref_pix_06					
109	r400sc_prsp_byc_intrp_ref_pix_07	00:00:10	49241	PASS	49241
\\fl_mkelly2\d\r400\regress\49241_020903101448\r400sc_prsp_byc_intrp_ref_pix_07					

AMD1044\_0185658

110	r400sc_prsp_byc_intrp_ref_pix_08	00:00:10	49241	PASS	49241
\\fl_mkelly2\d\r400\regress\49241_020903101448\r400sc_prsp_byc_intrp_ref_pix_08					
111	r400sc_raster_fill_rule_01	00:00:10	49241	PASS	49241
\\fl_mkelly2\d\r400\regress\49241_020903101448\r400sc_raster_fill_rule_01					
112	r400sc_raster_fill_rule_02	00:00:52	49241	PASS	49241
\\fl_mkelly2\d\r400\regress\49241_020903101448\r400sc_raster_fill_rule_02					
113	r400sc_raster_fill_rule_03	00:00:37	49241	PASS	49241
\\fl_mkelly2\d\r400\regress\49241_020903101448\r400sc_raster_fill_rule_03					
114	r400sc_raster_fill_rule_04	00:00:23	49241	PASS	49241
\\fl_mkelly2\d\r400\regress\49241_020903101448\r400sc_raster_fill_rule_04					
115	r400sc_raster_fill_rule_05	00:00:27	49241	PASS	49241
\\fl_mkelly2\d\r400\regress\49241_020903101448\r400sc_raster_fill_rule_05					
116	r400sc_raster_fill_rule_fc_01	00:00:09	49241	PASS	49241
\\fl_mkelly2\d\r400\regress\49241_020903101448\r400sc_raster_fill_rule_fc_01					
117	r400sc_rectangle_list_01	00:00:10	49241	PASS	49241
\\fl_mkelly2\d\r400\regress\49241_020903101448\r400sc_rectangle_list_01					
118	r400sc_rectangle_list_02	00:00:10	49241	PASS	49241
\\fl_mkelly2\d\r400\regress\49241_020903101448\r400sc_rectangle_list_02					
119	r400sc_rectangle_list_03	00:00:10	49241	PASS	49241
\\fl_mkelly2\d\r400\regress\49241_020903101448\r400sc_rectangle_list_03					
120	r400sc_rectangle_list_04	00:00:10	49241	PASS	49241
\\fl_mkelly2\d\r400\regress\49241_020903101448\r400sc_rectangle_list_04					
121	r400sc_rectangle_list_05	00:00:10	49241	PASS	49241
\\fl_mkelly2\d\r400\regress\49241_020903101448\r400sc_rectangle_list_05					
122	r400sc_rectangle_list_06	00:00:10	49241	PASS	49241
\\fl_mkelly2\d\r400\regress\49241_020903101448\r400sc_rectangle_list_06					
123	r400sc_rectangle_list_07	00:00:10	49241	PASS	49241
\\fl_mkelly2\d\r400\regress\49241_020903101448\r400sc_rectangle_list_07					
124	r400sc_rectangle_list_08	00:00:13	49241	PASS	49241
\\fl_mkelly2\d\r400\regress\49241_020903101448\r400sc_rectangle_list_08					
125	r400sc_scissor_rect_01	00:00:15	49241	PASS	49241
\\fl_mkelly2\d\r400\regress\49241_020903101448\r400sc_scissor_rect_01					

126	r400sc_scissor_rect_02	00:00:13	49241	PASS	49241
\\fl_mkelly2\d\r400\regress/49241_020903101448/r400sc_scissor_rect_02					
127	r400sc_scissor_rect_03	00:00:18	49241	PASS	49241
\\fl_mkelly2\d\r400\regress/49241_020903101448/r400sc_scissor_rect_03					
128	r400sc_scissor_rect_04	00:00:26	49241	PASS	49241
\\fl_mkelly2\d\r400\regress/49241_020903101448/r400sc_scissor_rect_04					
129	r400sc_scissor_rect_05	00:00:19	49241	PASS	49241
\\fl_mkelly2\d\r400\regress/49241_020903101448/r400sc_scissor_rect_05					
130	r400sc_scissor_rect_fc_01	00:00:10	49241	PASS	49241
\\fl_mkelly2\d\r400\regress/49241_020903101448/r400sc_scissor_rect_fc_01					
131	r400sc_set_state_01	00:00:12	49241	PASS	49241
\\fl_mkelly2\d\r400\regress/49241_020903101448/r400sc_set_state_01					
132	r400sc_tri_16_par_64_dwords_01	00:00:24	49241	PASS	49241
\\fl_mkelly2\d\r400\regress/49241_020903101448/r400sc_tri_16_par_64_dwords_01					
133	r400sc_tri_8textures_01	00:00:11	49241	PASS	49241
\\fl_mkelly2\d\r400\regress/49241_020903101448/r400sc_tri_8textures_01					
134	r400sc_tri_8textures_02	00:00:26	49241	PASS	49241
\\fl_mkelly2\d\r400\regress/49241_020903101448/r400sc_tri_8textures_02					
135	r400sc_tri_walk_start_vertex_01	00:00:23	49241	PASS	49241
\\fl_mkelly2\d\r400\regress/49241_020903101448/r400sc_tri_walk_start_vertex_01					
136	r400sc_tri_walk_start_vertex_02	00:00:21	49241	PASS	49241
\\fl_mkelly2\d\r400\regress/49241_020903101448/r400sc_tri_walk_start_vertex_02					
137	r400sc_tri_walk_start_vertex_03	00:00:21	49241	PASS	49241
\\fl_mkelly2\d\r400\regress/49241_020903101448/r400sc_tri_walk_start_vertex_03					
138	r400sc_tri_walk_start_vertex_04	00:00:21	49241	PASS	49241
\\fl_mkelly2\d\r400\regress/49241_020903101448/r400sc_tri_walk_start_vertex_04					
139	r400sc_tri_walk_start_vertex_05	00:00:33	49241	PASS	49241
\\fl_mkelly2\d\r400\regress/49241_020903101448/r400sc_tri_walk_start_vertex_05					
140	r400sc_tri_walk_start_vertex_06	00:00:21	49241	PASS	49241
\\fl_mkelly2\d\r400\regress/49241_020903101448/r400sc_tri_walk_start_vertex_06					
141	r400sc_tri_walk_start_vertex_07	00:00:22	49241	PASS	49241
\\fl_mkelly2\d\r400\regress/49241_020903101448/r400sc_tri_walk_start_vertex_07					

142	r400sc_tri_walk_start_vertex_08	00:00:22	49241	PASS	49241
\\fl_mkelly2\d\r400\regress/49241_020903101448/r400sc_tri_walk_start_vertex_08					
143	r400sc_tri_walk_start_vertex_09	00:00:21	49241	PASS	49241
\\fl_mkelly2\d\r400\regress/49241_020903101448/r400sc_tri_walk_start_vertex_09					
144	r400sc_tri_walk_start_vertex_10	00:00:21	49241	PASS	49241
\\fl_mkelly2\d\r400\regress/49241_020903101448/r400sc_tri_walk_start_vertex_10					
145	r400sc_tri_walk_start_vertex_11	00:00:22	49241	PASS	49241
\\fl_mkelly2\d\r400\regress/49241_020903101448/r400sc_tri_walk_start_vertex_11					
146	r400sc_tri_walk_start_vertex_12	00:00:23	49241	PASS	49241
\\fl_mkelly2\d\r400\regress/49241_020903101448/r400sc_tri_walk_start_vertex_12					
147	r400sc_tri_walk_start_vertex_13	00:00:22	49241	PASS	49241
\\fl_mkelly2\d\r400\regress/49241_020903101448/r400sc_tri_walk_start_vertex_13					
148	r400sc_tri_walk_start_vertex_14	00:00:21	49241	PASS	49241
\\fl_mkelly2\d\r400\regress/49241_020903101448/r400sc_tri_walk_start_vertex_14					
149	r400sc_tri_walk_start_vertex_15	00:00:22	49241	PASS	49241
\\fl_mkelly2\d\r400\regress/49241_020903101448/r400sc_tri_walk_start_vertex_15					
150	r400sc_tri_walk_start_vertex_16	00:00:23	49241	PASS	49241
\\fl_mkelly2\d\r400\regress/49241_020903101448/r400sc_tri_walk_start_vertex_16					
151	r400sc_triangle_stipple_01	00:00:21	49241	FAIL	
compare mismatch **					
152	r400sc_window_offset_01	00:00:10	49241	PASS	49241
\\fl_mkelly2\d\r400\regress/49241_020903101448/r400sc_window_offset_01					
153	r400sc_window_offset_fc_01	00:00:10	49241	PASS	49241
\\fl_mkelly2\d\r400\regress/49241_020903101448/r400sc_window_offset_fc_01					
154	r400sc_zbuffer_line_list_01	00:00:10	49241	PASS	49241
\\fl_mkelly2\d\r400\regress/49241_020903101448/r400sc_zbuffer_line_list_01					
155	r400sc_zbuffer_point_list_01	00:00:10	49241	PASS	49241
\\fl_mkelly2\d\r400\regress/49241_020903101448/r400sc_zbuffer_point_list_01					
156	r400sc_zbuffer_rectangle_list_01	00:00:10	49241	PASS	49241
\\fl_mkelly2\d\r400\regress/49241_020903101448/r400sc_zbuffer_rectangle_list_01					
157	r400sc_zbuffer_rectangle_list_02	00:00:10	49241	PASS	49241
\\fl_mkelly2\d\r400\regress/49241_020903101448/r400sc_zbuffer_rectangle_list_02					
158	r400sc_zbuffer_rectangle_list_fc_02	00:00:10	49241	PASS	49241

```

\\fl_mkelly2\d\r400\regress/49241_020903101448/r400sc_zbuffer_rectangle_list_fc_02

159 r400sc_zbuffer_triangle_list_01          00:00:10 49241 PASS    49241
\\fl_mkelly2\d\r400\regress/49241_020903101448/r400sc_zbuffer_triangle_list_01

160 r400cl_ucp_combos_30                    00:01:02 49241 PASS    49241
\\fl_mkelly2\d\r400\regress/49241_020903101448/r400cl_ucp_combos_30

161 r400cl_ucp_combos_29                    00:01:01 49241 PASS    49241
\\fl_mkelly2\d\r400\regress/49241_020903101448/r400cl_ucp_combos_29

162 r400cl_ucp_combos_28                    00:01:02 49241 PASS    49241
\\fl_mkelly2\d\r400\regress/49241_020903101448/r400cl_ucp_combos_28

163 r400cl_ucp_combos_27                    00:01:03 49241 PASS    49241
\\fl_mkelly2\d\r400\regress/49241_020903101448/r400cl_ucp_combos_27

164 r400cl_ucp_combos_26                    00:01:02 49241 PASS    49241
\\fl_mkelly2\d\r400\regress/49241_020903101448/r400cl_ucp_combos_26

165 r400cl_ucp_combos_25                    00:01:02 49241 PASS    49241
\\fl_mkelly2\d\r400\regress/49241_020903101448/r400cl_ucp_combos_25

166 r400cl_ucp_combos_24                    00:01:01 49241 PASS    49241
\\fl_mkelly2\d\r400\regress/49241_020903101448/r400cl_ucp_combos_24

167 r400cl_ucp_combos_23                    00:01:13 49241 PASS    49241
\\fl_mkelly2\d\r400\regress/49241_020903101448/r400cl_ucp_combos_23

168 r400cl_ucp_combos_22                    00:01:01 49241 PASS    49241
\\fl_mkelly2\d\r400\regress/49241_020903101448/r400cl_ucp_combos_22

169 r400cl_ucp_combos_21                    00:01:03 49241 PASS    49241
\\fl_mkelly2\d\r400\regress/49241_020903101448/r400cl_ucp_combos_21

170 r400cl_ucp_combos_20                    00:01:13 49241 PASS    49241
\\fl_mkelly2\d\r400\regress/49241_020903101448/r400cl_ucp_combos_20

171 r400cl_ucp_combos_19                    00:01:02 49241 PASS    49241
\\fl_mkelly2\d\r400\regress/49241_020903101448/r400cl_ucp_combos_19

172 r400cl_ucp_combos_18                    00:01:02 49241 PASS    49241
\\fl_mkelly2\d\r400\regress/49241_020903101448/r400cl_ucp_combos_18

173 r400cl_ucp_combos_17                    00:01:02 49241 PASS    49241
\\fl_mkelly2\d\r400\regress/49241_020903101448/r400cl_ucp_combos_17

174 r400cl_ucp_combos_16                    00:01:02 49241 PASS    49241

```

```

\\fl_mkelly2\d\r400\regress/49241_020903101448/r400cl_ucp_combos_16

175 r400cl_ucp_combos_15                00:01:02 49241 PASS    49241
\\fl_mkelly2\d\r400\regress/49241_020903101448/r400cl_ucp_combos_15

176 r400cl_ucp_combos_14                00:01:02 49241 PASS    49241
\\fl_mkelly2\d\r400\regress/49241_020903101448/r400cl_ucp_combos_14

177 r400cl_ucp_combos_13                00:01:02 49241 PASS    49241
\\fl_mkelly2\d\r400\regress/49241_020903101448/r400cl_ucp_combos_13

178 r400cl_ucp_combos_12                00:01:02 49241 PASS    49241
\\fl_mkelly2\d\r400\regress/49241_020903101448/r400cl_ucp_combos_12

179 r400cl_ucp_combos_11                00:01:02 49241 PASS    49241
\\fl_mkelly2\d\r400\regress/49241_020903101448/r400cl_ucp_combos_11

180 r400cl_ucp_combos_10                00:01:03 49241 PASS    49241
\\fl_mkelly2\d\r400\regress/49241_020903101448/r400cl_ucp_combos_10

181 r400cl_ucp_combos_09                00:01:03 49241 PASS    49241
\\fl_mkelly2\d\r400\regress/49241_020903101448/r400cl_ucp_combos_09

182 r400cl_ucp_combos_08                00:01:03 49241 PASS    49241
\\fl_mkelly2\d\r400\regress/49241_020903101448/r400cl_ucp_combos_08

183 r400cl_ucp_combos_07                00:01:02 49241 PASS    49241
\\fl_mkelly2\d\r400\regress/49241_020903101448/r400cl_ucp_combos_07

184 r400cl_ucp_combos_06                00:01:01 49241 PASS    49241
\\fl_mkelly2\d\r400\regress/49241_020903101448/r400cl_ucp_combos_06

185 r400cl_ucp_combos_05                00:01:06 49241 PASS    49241
\\fl_mkelly2\d\r400\regress/49241_020903101448/r400cl_ucp_combos_05

186 r400cl_pointlist_vertex_state_ucp_01 00:00:12 49241 PASS    49241
\\fl_mkelly2\d\r400\regress/49241_020903101448/r400cl_pointlist_vertex_state_ucp_01

187 r400cl_ucp_pointlist_01             00:00:20 49241 FAIL
compare mismatch No
188 r400cl_gband_tcl_01                 00:00:27 49241 PASS    49241
\\fl_mkelly2\d\r400\regress/49241_020903101448/r400cl_gband_tcl_01

189 r400cl_clip_disable_01              00:00:27 49241 PASS    49241
\\fl_mkelly2\d\r400\regress/49241_020903101448/r400cl_clip_disable_01

190 r400cl_vtx_kill_01                   00:00:10 49241 PASS    49241
\\fl_mkelly2\d\r400\regress/49241_020903101448/r400cl_vtx_kill_01

```

AMD1044\_0185663



191	r400cl_vtx_kill_02	00:00:10	49241	PASS	49241
	\\fl_mkelly2\d\r400\regress\49241_020903101448\r400cl_vtx_kill_02				
192	r400cl_edgeflags_gband_01	00:00:24	49241	PASS	49241
	\\fl_mkelly2\d\r400\regress\49241_020903101448\r400cl_edgeflags_gband_01				
193	r400cl_edgeflags_gband_left_01	00:00:25	49241	PASS	49241
	\\fl_mkelly2\d\r400\regress\49241_020903101448\r400cl_edgeflags_gband_left_01				
194	r400cl_edgeflags_gband_right_01	00:00:24	49241	PASS	49241
	\\fl_mkelly2\d\r400\regress\49241_020903101448\r400cl_edgeflags_gband_right_01				
195	r400cl_edgeflags_gband_bottom_01	00:00:24	49241	PASS	49241
	\\fl_mkelly2\d\r400\regress\49241_020903101448\r400cl_edgeflags_gband_bottom_01				
196	r400cl_edgeflags_gband_top_01	00:00:24	49241	PASS	49241
	\\fl_mkelly2\d\r400\regress\49241_020903101448\r400cl_edgeflags_gband_top_01				
197	r400cl_edgeflags_frustum_bottom_01	00:00:12	49241	PASS	49241
	\\fl_mkelly2\d\r400\regress\49241_020903101448\r400cl_edgeflags_frustum_bottom_01				
198	r400cl_edgeflags_frustum_top_01	00:00:12	49241	PASS	49241
	\\fl_mkelly2\d\r400\regress\49241_020903101448\r400cl_edgeflags_frustum_top_01				
199	r400cl_edgeflags_frustum_right_01	00:00:12	49241	PASS	49241
	\\fl_mkelly2\d\r400\regress\49241_020903101448\r400cl_edgeflags_frustum_right_01				
200	r400cl_edgeflags_frustum_left_01	00:00:12	49241	PASS	49241
	\\fl_mkelly2\d\r400\regress\49241_020903101448\r400cl_edgeflags_frustum_left_01				
201	r400cl_edgeflags_frustum_near_01	00:00:12	49241	PASS	49241
	\\fl_mkelly2\d\r400\regress\49241_020903101448\r400cl_edgeflags_frustum_near_01				
202	r400cl_edgeflags_frustum_far_01	00:00:11	49241	PASS	49241
	\\fl_mkelly2\d\r400\regress\49241_020903101448\r400cl_edgeflags_frustum_far_01				
203	r400cl_edgeflags_01	00:00:12	49241	PASS	49241
	\\fl_mkelly2\d\r400\regress\49241_020903101448\r400cl_edgeflags_01				
204	r400cl_frustum_lines_02	00:00:18	49241	PASS	49241
	\\fl_mkelly2\d\r400\regress\49241_020903101448\r400cl_frustum_lines_02				
205	r400cl_frustum_lines_03	00:00:17	49241	PASS	49241
	\\fl_mkelly2\d\r400\regress\49241_020903101448\r400cl_frustum_lines_03				
206	r400cl_frustum_lines_04	00:00:20	49241	PASS	49241
	\\fl_mkelly2\d\r400\regress\49241_020903101448\r400cl_frustum_lines_04				

AMD1044\_0185664

207	r400cl_frustum_lines_05	00:00:16	49241	PASS	49241
\\fl_mkelly2\d\r400\regress\49241_020903101448\r400cl_frustum_lines_05					
208	r400cl_frustum_lines_06	00:00:18	49241	PASS	49241
\\fl_mkelly2\d\r400\regress\49241_020903101448\r400cl_frustum_lines_06					
209	r400cl_frustum_lines_07	00:00:18	49241	PASS	49241
\\fl_mkelly2\d\r400\regress\49241_020903101448\r400cl_frustum_lines_07					
210	r400cl_frustum_lines_08	00:00:21	49241	PASS	49241
\\fl_mkelly2\d\r400\regress\49241_020903101448\r400cl_frustum_lines_08					
211	r400cl_frustum_lines_09	00:00:15	49241	PASS	49241
\\fl_mkelly2\d\r400\regress\49241_020903101448\r400cl_frustum_lines_09					
212	r400cl_frustum_lines_10	00:00:17	49241	PASS	49241
\\fl_mkelly2\d\r400\regress\49241_020903101448\r400cl_frustum_lines_10					
213	r400cl_frustum_lines_11	00:00:17	49241	PASS	49241
\\fl_mkelly2\d\r400\regress\49241_020903101448\r400cl_frustum_lines_11					
214	r400cl_frustum_lines_12	00:00:19	49241	PASS	49241
\\fl_mkelly2\d\r400\regress\49241_020903101448\r400cl_frustum_lines_12					
215	r400cl_frustum_lines_13	00:00:15	49241	PASS	49241
\\fl_mkelly2\d\r400\regress\49241_020903101448\r400cl_frustum_lines_13					
216	r400cl_frustum_lines_14	00:00:17	49241	PASS	49241
\\fl_mkelly2\d\r400\regress\49241_020903101448\r400cl_frustum_lines_14					
217	r400cl_frustum_lines_15	00:00:18	49241	PASS	49241
\\fl_mkelly2\d\r400\regress\49241_020903101448\r400cl_frustum_lines_15					
218	r400cl_frustum_lines_16	00:00:18	49241	PASS	49241
\\fl_mkelly2\d\r400\regress\49241_020903101448\r400cl_frustum_lines_16					
219	r400cl_frustum_lines_17	00:00:17	49241	PASS	49241
\\fl_mkelly2\d\r400\regress\49241_020903101448\r400cl_frustum_lines_17					
220	r400cl_frustum_lines_18	00:00:17	49241	PASS	49241
\\fl_mkelly2\d\r400\regress\49241_020903101448\r400cl_frustum_lines_18					
221	r400cl_frustum_lines_19	00:00:18	49241	PASS	49241
\\fl_mkelly2\d\r400\regress\49241_020903101448\r400cl_frustum_lines_19					
222	r400cl_frustum_lines_20	00:00:19	49241	PASS	49241
\\fl_mkelly2\d\r400\regress\49241_020903101448\r400cl_frustum_lines_20					

AMD1044\_0185665

223	r400cl_frustum_lines_21	00:00:15	49241	PASS	49241
\\fl_mkelly2\d\r400\regress/49241_020903101448/r400cl_frustum_lines_21					
224	r400cl_frustum_lines_22	00:00:16	49241	PASS	49241
\\fl_mkelly2\d\r400\regress/49241_020903101448/r400cl_frustum_lines_22					
225	r400cl_frustum_lines_23	00:00:16	49241	PASS	49241
\\fl_mkelly2\d\r400\regress/49241_020903101448/r400cl_frustum_lines_23					
226	r400cl_frustum_lines_24	00:00:18	49241	PASS	49241
\\fl_mkelly2\d\r400\regress/49241_020903101448/r400cl_frustum_lines_24					
227	r400cl_frustum_17	00:00:29	49241	PASS	49241
\\fl_mkelly2\d\r400\regress/49241_020903101448/r400cl_frustum_17					
228	r400cl_frustum_18	00:00:35	49241	PASS	49241
\\fl_mkelly2\d\r400\regress/49241_020903101448/r400cl_frustum_18					
229	r400cl_frustum_19	00:00:34	49241	PASS	49241
\\fl_mkelly2\d\r400\regress/49241_020903101448/r400cl_frustum_19					
230	r400cl_frustum_20	00:00:37	49241	PASS	49241
\\fl_mkelly2\d\r400\regress/49241_020903101448/r400cl_frustum_20					
231	r400cl_frustum_21	00:00:27	49241	PASS	49241
\\fl_mkelly2\d\r400\regress/49241_020903101448/r400cl_frustum_21					
232	r400cl_frustum_22	00:00:35	49241	PASS	49241
\\fl_mkelly2\d\r400\regress/49241_020903101448/r400cl_frustum_22					
233	r400cl_frustum_23	00:00:33	49241	PASS	49241
\\fl_mkelly2\d\r400\regress/49241_020903101448/r400cl_frustum_23					
234	r400cl_frustum_24	00:00:37	49241	PASS	49241
\\fl_mkelly2\d\r400\regress/49241_020903101448/r400cl_frustum_24					
235	r400cl_frustum_25	00:00:22	49241	PASS	49241
\\fl_mkelly2\d\r400\regress/49241_020903101448/r400cl_frustum_25					
236	r400cl_frustum_26	00:00:35	49241	PASS	49241
\\fl_mkelly2\d\r400\regress/49241_020903101448/r400cl_frustum_26					
237	r400cl_frustum_27	00:00:35	49241	PASS	49241
\\fl_mkelly2\d\r400\regress/49241_020903101448/r400cl_frustum_27					
238	r400cl_frustum_28	00:00:43	49241	PASS	49241
\\fl_mkelly2\d\r400\regress/49241_020903101448/r400cl_frustum_28					

AMD1044\_0185666

239	r400cl_frustum_16	00:00:37	49241	PASS	49241
	\\fl_mkelly2\d\r400\regress/49241_020903101448/r400cl_frustum_16				
240	r400cl_frustum_15	00:00:36	49241	PASS	49241
	\\fl_mkelly2\d\r400\regress/49241_020903101448/r400cl_frustum_15				
241	r400cl_frustum_14	00:00:36	49241	PASS	49241
	\\fl_mkelly2\d\r400\regress/49241_020903101448/r400cl_frustum_14				
242	r400cl_frustum_13	00:00:30	49241	PASS	49241
	\\fl_mkelly2\d\r400\regress/49241_020903101448/r400cl_frustum_13				
243	r400cl_frustum_12	00:00:41	49241	PASS	49241
	\\fl_mkelly2\d\r400\regress/49241_020903101448/r400cl_frustum_12				
244	r400cl_frustum_11	00:00:34	49241	PASS	49241
	\\fl_mkelly2\d\r400\regress/49241_020903101448/r400cl_frustum_11				
245	r400cl_frustum_10	00:00:37	49241	PASS	49241
	\\fl_mkelly2\d\r400\regress/49241_020903101448/r400cl_frustum_10				
246	r400cl_frustum_09	00:00:27	49241	PASS	49241
	\\fl_mkelly2\d\r400\regress/49241_020903101448/r400cl_frustum_09				
247	r400cl_clip_10_verts_01	00:00:12	49241	PASS	49241
	\\fl_mkelly2\d\r400\regress/49241_020903101448/r400cl_clip_10_verts_01				
248	r400cl_vertex_reuse_clip_01	00:01:06	49241	PASS	49241
	\\fl_mkelly2\d\r400\regress/49241_020903101448/r400cl_vertex_reuse_clip_01				
249	r400cl_cull_only_ena_01	00:00:15	49241	PASS	49241
	\\fl_mkelly2\d\r400\regress/49241_020903101448/r400cl_cull_only_ena_01				
250	r400cl_clip_ucp_6bits_01	00:00:16	49241	PASS	49241
	\\fl_mkelly2\d\r400\regress/49241_020903101448/r400cl_clip_ucp_6bits_01				
251	r400cl_clip_space_dx_ogl_01	00:00:11	49241	PASS	49241
	\\fl_mkelly2\d\r400\regress/49241_020903101448/r400cl_clip_space_dx_ogl_01				
252	r400cl_frustum_01	00:00:27	49241	PASS	49241
	\\fl_mkelly2\d\r400\regress/49241_020903101448/r400cl_frustum_01				
253	r400cl_frustum_02	00:00:34	49241	PASS	49241
	\\fl_mkelly2\d\r400\regress/49241_020903101448/r400cl_frustum_02				
254	r400cl_frustum_03	00:00:35	49241	PASS	49241
	\\fl_mkelly2\d\r400\regress/49241_020903101448/r400cl_frustum_03				

255	r400cl_frustum_04	00:00:39	49241	PASS	49241
	\\fl_mkelly2\d\r400\regress/49241_020903101448/r400cl_frustum_04				
256	r400cl_frustum_05	00:00:26	49241	PASS	49241
	\\fl_mkelly2\d\r400\regress/49241_020903101448/r400cl_frustum_05				
257	r400cl_frustum_06	00:00:36	49241	PASS	49241
	\\fl_mkelly2\d\r400\regress/49241_020903101448/r400cl_frustum_06				
258	r400cl_frustum_07	00:00:36	49241	PASS	49241
	\\fl_mkelly2\d\r400\regress/49241_020903101448/r400cl_frustum_07				
259	r400cl_frustum_08	00:00:41	49241	PASS	49241
	\\fl_mkelly2\d\r400\regress/49241_020903101448/r400cl_frustum_08				
260	r400cl_frustum_lines_01	00:00:17	49241	PASS	49241
	\\fl_mkelly2\d\r400\regress/49241_020903101448/r400cl_frustum_lines_01				
261	r400cl_gband_04	00:00:10	49241	PASS	49241
	\\fl_mkelly2\d\r400\regress/49241_020903101448/r400cl_gband_04				
262	r400cl_simple_triangle_01	00:00:10	49241	PASS	49241
	\\fl_mkelly2\d\r400\regress/49241_020903101448/r400cl_simple_triangle_01				
263	r400cl_ucp_combos_01	00:01:01	49241	PASS	49241
	\\fl_mkelly2\d\r400\regress/49241_020903101448/r400cl_ucp_combos_01				
264	r400cl_ucp_combos_02	00:01:02	49241	PASS	49241
	\\fl_mkelly2\d\r400\regress/49241_020903101448/r400cl_ucp_combos_02				
265	r400cl_ucp_combos_03	00:01:02	49241	PASS	49241
	\\fl_mkelly2\d\r400\regress/49241_020903101448/r400cl_ucp_combos_03				
266	r400cl_ucp_combos_04	00:01:13	49241	PASS	49241
	\\fl_mkelly2\d\r400\regress/49241_020903101448/r400cl_ucp_combos_04				
267	r400cl_w_eq_0	00:00:10	49241	PASS	49241
	\\fl_mkelly2\d\r400\regress/49241_020903101448/r400cl_w_eq_0				
268	r400vgt_auto_index_line_list_01	00:00:12	49241	PASS	49241
	\\fl_mkelly2\d\r400\regress/49241_020903101448/r400vgt_auto_index_line_list_01				
269	r400vgt_auto_index_line_loop_01	00:00:12	49241	PASS	49241
	\\fl_mkelly2\d\r400\regress/49241_020903101448/r400vgt_auto_index_line_loop_01				
270	r400vgt_auto_index_line_strip_01	00:00:12	49241	PASS	49241
	\\fl_mkelly2\d\r400\regress/49241_020903101448/r400vgt_auto_index_line_strip_01				

AMD1044\_0185668

271	r400vgt_auto_index_points_01	00:00:12	49241	PASS	49241
\\fl_mkelly2\d\r400\regress\49241_020903101448\r400vgt_auto_index_points_01					
272	r400vgt_auto_index_polygon_01	00:00:14	49241	PASS	49241
\\fl_mkelly2\d\r400\regress\49241_020903101448\r400vgt_auto_index_polygon_01					
273	r400vgt_auto_index_primtypes_01	00:00:10	49241	PASS	49241
\\fl_mkelly2\d\r400\regress\49241_020903101448\r400vgt_auto_index_primtypes_01					
274	r400vgt_auto_index_quad_list_01	00:00:13	49241	PASS	49241
\\fl_mkelly2\d\r400\regress\49241_020903101448\r400vgt_auto_index_quad_list_01					
275	r400vgt_auto_index_quad_strip_01	00:00:14	49241	PASS	49241
\\fl_mkelly2\d\r400\regress\49241_020903101448\r400vgt_auto_index_quad_strip_01					
276	r400vgt_auto_index_rectangle_list_01	00:00:15	49241	PASS	49241
\\fl_mkelly2\d\r400\regress\49241_020903101448\r400vgt_auto_index_rectangle_list_01					
277	r400vgt_auto_index_tri_fan_01	00:00:13	49241	PASS	49241
\\fl_mkelly2\d\r400\regress\49241_020903101448\r400vgt_auto_index_tri_fan_01					
278	r400vgt_auto_index_tri_list_01	00:00:12	49241	PASS	49241
\\fl_mkelly2\d\r400\regress\49241_020903101448\r400vgt_auto_index_tri_list_01					
279	r400vgt_auto_index_tri_strip_01	00:00:14	49241	PASS	49241
\\fl_mkelly2\d\r400\regress\49241_020903101448\r400vgt_auto_index_tri_strip_01					
280	r400vgt_auto_index_tri_wflags_01	00:00:12	49241	PASS	49241
\\fl_mkelly2\d\r400\regress\49241_020903101448\r400vgt_auto_index_tri_wflags_01					
281	r400vgt_dma_engine_01	00:00:29	49241	PASS	49241
\\fl_mkelly2\d\r400\regress\49241_020903101448\r400vgt_dma_engine_01					
282	r400vgt_dma_engine_02	00:00:14	49241	PASS	49241
\\fl_mkelly2\d\r400\regress\49241_020903101448\r400vgt_dma_engine_02					
283	r400vgt_dma_engine_03	00:00:13	49241	PASS	49241
\\fl_mkelly2\d\r400\regress\49241_020903101448\r400vgt_dma_engine_03					
284	r400vgt_dma_engine_04	00:00:14	49241	PASS	49241
\\fl_mkelly2\d\r400\regress\49241_020903101448\r400vgt_dma_engine_04					
285	r400vgt_dma_engine_05	00:00:13	49241	PASS	49241
\\fl_mkelly2\d\r400\regress\49241_020903101448\r400vgt_dma_engine_05					
286	r400vgt_dma_engine_06	00:00:12	49241	PASS	49241
\\fl_mkelly2\d\r400\regress\49241_020903101448\r400vgt_dma_engine_06					

AMD1044\_0185669

287	r400vgt_dma_engine_07	00:00:12	49241	PASS	49241
\\fl_mkelly2\d\r400\regress\49241_020903101448\r400vgt_dma_engine_07					
288	r400vgt_dma_engine_08	00:00:17	49241	PASS	49241
\\fl_mkelly2\d\r400\regress\49241_020903101448\r400vgt_dma_engine_08					
289	r400vgt_dma_engine_09	00:00:17	49241	PASS	49241
\\fl_mkelly2\d\r400\regress\49241_020903101448\r400vgt_dma_engine_09					
290	r400vgt_dma_engine_10	00:00:15	49241	PASS	49241
\\fl_mkelly2\d\r400\regress\49241_020903101448\r400vgt_dma_engine_10					
291	r400vgt_dma_index_line_list_01	00:00:11	49241	PASS	49241
\\fl_mkelly2\d\r400\regress\49241_020903101448\r400vgt_dma_index_line_list_01					
292	r400vgt_dma_index_line_loop_01	00:00:11	49241	PASS	49241
\\fl_mkelly2\d\r400\regress\49241_020903101448\r400vgt_dma_index_line_loop_01					
293	r400vgt_dma_index_line_strip_01	00:00:11	49241	PASS	49241
\\fl_mkelly2\d\r400\regress\49241_020903101448\r400vgt_dma_index_line_strip_01					
294	r400vgt_dma_index_points_01	00:00:11	49241	PASS	49241
\\fl_mkelly2\d\r400\regress\49241_020903101448\r400vgt_dma_index_points_01					
295	r400vgt_dma_index_polygon_01	00:00:13	49241	PASS	49241
\\fl_mkelly2\d\r400\regress\49241_020903101448\r400vgt_dma_index_polygon_01					
296	r400vgt_dma_index_primitives_01	00:00:11	49241	PASS	49241
\\fl_mkelly2\d\r400\regress\49241_020903101448\r400vgt_dma_index_primitives_01					
297	r400vgt_dma_index_quad_list_01	00:00:12	49241	PASS	49241
\\fl_mkelly2\d\r400\regress\49241_020903101448\r400vgt_dma_index_quad_list_01					
298	r400vgt_dma_index_quad_strip_01	00:00:15	49241	PASS	49241
\\fl_mkelly2\d\r400\regress\49241_020903101448\r400vgt_dma_index_quad_strip_01					
299	r400vgt_dma_index_rectangle_list_01	00:00:12	49241	PASS	49241
\\fl_mkelly2\d\r400\regress\49241_020903101448\r400vgt_dma_index_rectangle_list_01					
300	r400vgt_dma_index_tri_fan_01	00:00:13	49241	PASS	49241
\\fl_mkelly2\d\r400\regress\49241_020903101448\r400vgt_dma_index_tri_fan_01					
301	r400vgt_dma_index_tri_list_01	00:00:11	49241	PASS	49241
\\fl_mkelly2\d\r400\regress\49241_020903101448\r400vgt_dma_index_tri_list_01					
302	r400vgt_dma_index_tri_strip_01	00:00:13	49241	PASS	49241
\\fl_mkelly2\d\r400\regress\49241_020903101448\r400vgt_dma_index_tri_strip_01					

AMD1044\_0185670

303	r400vgt_dma_index_tri_wflags_01	00:00:12	49241	PASS	49241
\\fl_mkelly2\d\r400\regress\49241_020903101448\r400vgt_dma_index_tri_wflags_01					
304	r400vgt_dma_swap_indx16_01	00:00:13	49241	PASS	49241
\\fl_mkelly2\d\r400\regress\49241_020903101448\r400vgt_dma_swap_indx16_01					
305	r400vgt_dma_swap_indx32_01	00:00:13	49241	PASS	49241
\\fl_mkelly2\d\r400\regress\49241_020903101448\r400vgt_dma_swap_indx32_01					
306	r400vgt_edgeflags_polygon_01	00:00:10	49241	PASS	49241
\\fl_mkelly2\d\r400\regress\49241_020903101448\r400vgt_edgeflags_polygon_01					
307	r400vgt_edgeflags_quad_list_01	00:00:10	49241	PASS	49241
\\fl_mkelly2\d\r400\regress\49241_020903101448\r400vgt_edgeflags_quad_list_01					
308	r400vgt_edgeflags_quad_strip_01	00:00:10	49241	PASS	49241
\\fl_mkelly2\d\r400\regress\49241_020903101448\r400vgt_edgeflags_quad_strip_01					
309	r400vgt_edgeflags_triangle_fan_01	00:00:10	49241	PASS	49241
\\fl_mkelly2\d\r400\regress\49241_020903101448\r400vgt_edgeflags_triangle_fan_01					
310	r400vgt_edgeflags_triangle_list_01	00:00:10	49241	PASS	49241
\\fl_mkelly2\d\r400\regress\49241_020903101448\r400vgt_edgeflags_triangle_list_01					
311	r400vgt_edgeflags_triangle_strip_01	00:00:10	49241	PASS	49241
\\fl_mkelly2\d\r400\regress\49241_020903101448\r400vgt_edgeflags_triangle_strip_01					
312	r400vgt_edgeflags_triangle_wflags_01	00:00:10	49241	PASS	49241
\\fl_mkelly2\d\r400\regress\49241_020903101448\r400vgt_edgeflags_triangle_wflags_01					
313	r400vgt_ext2int_index_line_list_01	00:00:10	49241	PASS	49241
\\fl_mkelly2\d\r400\regress\49241_020903101448\r400vgt_ext2int_index_line_list_01					
314	r400vgt_ext2int_index_line_loop_01	00:00:12	49241	PASS	49241
\\fl_mkelly2\d\r400\regress\49241_020903101448\r400vgt_ext2int_index_line_loop_01					
315	r400vgt_ext2int_index_line_strip_01	00:00:12	49241	PASS	49241
\\fl_mkelly2\d\r400\regress\49241_020903101448\r400vgt_ext2int_index_line_strip_01					
316	r400vgt_ext2int_index_points_01	00:00:10	49241	PASS	49241
\\fl_mkelly2\d\r400\regress\49241_020903101448\r400vgt_ext2int_index_points_01					
317	r400vgt_ext2int_index_polygon_01	00:00:15	49241	PASS	49241
\\fl_mkelly2\d\r400\regress\49241_020903101448\r400vgt_ext2int_index_polygon_01					
318	r400vgt_ext2int_index_quad_list_01	00:00:11	49241	PASS	49241
\\fl_mkelly2\d\r400\regress\49241_020903101448\r400vgt_ext2int_index_quad_list_01					

AMD1044\_0185671



```

319 r400vgt_ext2int_index_quad_strip_01          00:00:12 49241 PASS    49241
\\fl_mkelly2\d\r400\regress/49241_020903101448/r400vgt_ext2int_index_quad_strip_01

320 r400vgt_ext2int_index_triangle_fan_01        00:00:16 49241 PASS    49241
\\fl_mkelly2\d\r400\regress/49241_020903101448/r400vgt_ext2int_index_triangle_fan_01

321 r400vgt_ext2int_index_triangle_list_01       00:00:18 49241 PASS    49241
\\fl_mkelly2\d\r400\regress/49241_020903101448/r400vgt_ext2int_index_triangle_list_01

322 r400vgt_ext2int_index_triangle_strip_01      00:00:12 49241 PASS    49241
\\fl_mkelly2\d\r400\regress/49241_020903101448/r400vgt_ext2int_index_triangle_strip_01

323 r400vgt_hos_auto_index_line_list_01         00:00:23 49241 PASS    49241
\\fl_mkelly2\d\r400\regress/49241_020903101448/r400vgt_hos_auto_index_line_list_01

324 r400vgt_hos_auto_index_quad_list_01         00:03:17 49241 PASS    49241
\\fl_mkelly2\d\r400\regress/49241_020903101448/r400vgt_hos_auto_index_quad_list_01

325 r400vgt_hos_auto_index_triangle_list_01     00:02:23 49241 PASS    49241
\\fl_mkelly2\d\r400\regress/49241_020903101448/r400vgt_hos_auto_index_triangle_list_01

326 r400vgt_hos_cubic_pos_pnt_discrete_01      00:00:49 49241 PASS    49241
\\fl_mkelly2\d\r400\regress/49241_020903101448/r400vgt_hos_cubic_pos_pnt_discrete_01

327 r400vgt_hos_PNL_cp_ln_cont_no_projection_01 00:00:18 49241 PASS    49241
\\fl_mkelly2\d\r400\regress/49241_020903101448/r400vgt_hos_PNL_cp_ln_cont_no_projection_01

328 r400vgt_hos_PNL_lp_ln_cont_no_projection_01 00:00:18 49241 PASS    49241
\\fl_mkelly2\d\r400\regress/49241_020903101448/r400vgt_hos_PNL_lp_ln_cont_no_projection_01

329 r400vgt_hos_PNQ_cp_qn_cont_light_texture_01 00:02:47 49241 PASS    49241
\\fl_mkelly2\d\r400\regress/49241_020903101448/r400vgt_hos_PNQ_cp_qn_cont_light_texture_01

330 r400vgt_hos_PNQ_cp_qn_cont_light_texture_02 00:02:39 49241 PASS    49241
\\fl_mkelly2\d\r400\regress/49241_020903101448/r400vgt_hos_PNQ_cp_qn_cont_light_texture_02

331 r400vgt_hos_PNQ_cp_qn_cont_no_projection_01 00:00:59 49241 PASS    49241
\\fl_mkelly2\d\r400\regress/49241_020903101448/r400vgt_hos_PNQ_cp_qn_cont_no_projection_01

332 r400vgt_hos_PNQ_lp_cont_no_projection_01    00:01:24 49241 PASS    49241
\\fl_mkelly2\d\r400\regress/49241_020903101448/r400vgt_hos_PNQ_lp_cont_no_projection_01

333 r400vgt_hos_PNT_cp_qn_cont_light_texture_01 00:01:07 49241 PASS    49241
\\fl_mkelly2\d\r400\regress/49241_020903101448/r400vgt_hos_PNT_cp_qn_cont_light_texture_01

334 r400vgt_hos_PNT_cp_qn_cont_light_texture_02 00:01:08 49241 PASS    49241
\\fl_mkelly2\d\r400\regress/49241_020903101448/r400vgt_hos_PNT_cp_qn_cont_light_texture

```

AMD1044\_0185672

```

_02
 335 r400vgt_hos_PNT_cp_qn_cont_light_texture_03      00:01:09 49241 PASS    49241
\\fl_mkelly2\d\r400\regress/49241_020903101448/r400vgt_hos_PNT_cp_qn_cont_light_texture
_03
 336 r400vgt_hos_PNT_cp_qn_cont_moving_normals_01     00:01:59 49241 PASS    49241
\\fl_mkelly2\d\r400\regress/49241_020903101448/r400vgt_hos_PNT_cp_qn_cont_moving_normal
s_01
 337 r400vgt_hos_PNT_cp_qn_cont_no_projection_01     00:00:38 49241 PASS    49241
\\fl_mkelly2\d\r400\regress/49241_020903101448/r400vgt_hos_PNT_cp_qn_cont_no_projection
_01
 338 r400vgt_hos_PNT_cp_qn_disc_14_04_lit_tex_proj_01 00:00:18 49241 PASS    49241
\\fl_mkelly2\d\r400\regress/49241_020903101448/r400vgt_hos_PNT_cp_qn_disc_14_04_lit_tex
_proj_01
 339 r400vgt_hos_PNT_disc_cp_qn_light_texture_01     00:00:43 49241 PASS    49241
\\fl_mkelly2\d\r400\regress/49241_020903101448/r400vgt_hos_PNT_disc_cp_qn_light_texture
_01
 340 r400vgt_hos_PNT_disc_cp_qn_no_projection_01     00:00:20 49241 PASS    49241
\\fl_mkelly2\d\r400\regress/49241_020903101448/r400vgt_hos_PNT_disc_cp_qn_no_projection
_01
 341 r400vgt_hos_PNT_disc_cp_qn_precision_01         00:00:19 49241 PASS    49241
\\fl_mkelly2\d\r400\regress/49241_020903101448/r400vgt_hos_PNT_disc_cp_qn_precision_01

 342 r400vgt_hos_PNT_cont_cp_qn_precision_01        00:00:36 49241 PASS    49241
\\fl_mkelly2\d\r400\regress/49241_020903101448/r400vgt_hos_PNT_cont_cp_qn_precision_01

 343 r400vgt_hos_PNT_disc_cp_qn_precision_02        00:00:45 49241 PASS    49241
\\fl_mkelly2\d\r400\regress/49241_020903101448/r400vgt_hos_PNT_disc_cp_qn_precision_02

 344 r400vgt_hos_PNT_cont_cp_qn_precision_02        00:01:02 49241 PASS    49241
\\fl_mkelly2\d\r400\regress/49241_020903101448/r400vgt_hos_PNT_cont_cp_qn_precision_02

 345 r400vgt_hos_PNT_lp_cont_no_projection_01       00:01:04 49241 PASS    49241
\\fl_mkelly2\d\r400\regress/49241_020903101448/r400vgt_hos_PNT_lp_cont_no_projection_01

 346 r400vgt_hos_PNT_disc_cp_qn_complex_01         00:02:41 49241 PASS    49241
\\fl_mkelly2\d\r400\regress/49241_020903101448/r400vgt_hos_PNT_disc_cp_qn_complex_01

 347 r400vgt_hos_PNT_cont_cp_qn_complex_01         00:03:03 49241 PASS    49241
\\fl_mkelly2\d\r400\regress/49241_020903101448/r400vgt_hos_PNT_cont_cp_qn_complex_01

 348 r400vgt_hos_PNT_edge_detection_01             00:01:38 49241 PASS    49241
\\fl_mkelly2\d\r400\regress/49241_020903101448/r400vgt_hos_PNT_edge_detection_01

 349 r400vgt_hos_RPatch_cp_02                     00:00:10 49241 FAIL
cmp file missing No
 350 r400vgt_hos_RPatch_lp_02                     00:00:10 49241 FAIL
cmp file missing No
 351 r400vgt_hos_simple_linear_PNT_discrete_01     00:00:10 49241 PASS    49241

```

AMD1044\_0185673

```

\\fl_mkelly2\d\r400\regress/49241_020903101448/r400vgt_hos_simple_linear_PNT_discrete_0
1
  352 r400vgt_immed_index_line_list_01          00:00:11 49241 PASS    49241
\\fl_mkelly2\d\r400\regress/49241_020903101448/r400vgt_immed_index_line_list_01

  353 r400vgt_immed_index_line_loop_01         00:00:11 49241 PASS    49241
\\fl_mkelly2\d\r400\regress/49241_020903101448/r400vgt_immed_index_line_loop_01

  354 r400vgt_immed_index_line_strip_01        00:00:11 49241 PASS    49241
\\fl_mkelly2\d\r400\regress/49241_020903101448/r400vgt_immed_index_line_strip_01

  355 r400vgt_immed_index_points_01           00:00:11 49241 PASS    49241
\\fl_mkelly2\d\r400\regress/49241_020903101448/r400vgt_immed_index_points_01

  356 r400vgt_immed_index_polygon_01          00:00:14 49241 PASS    49241
\\fl_mkelly2\d\r400\regress/49241_020903101448/r400vgt_immed_index_polygon_01

  357 r400vgt_immed_index_primitives_01       00:00:11 49241 PASS    49241
\\fl_mkelly2\d\r400\regress/49241_020903101448/r400vgt_immed_index_primitives_01

  358 r400vgt_immed_index_quad_list_01        00:00:13 49241 PASS    49241
\\fl_mkelly2\d\r400\regress/49241_020903101448/r400vgt_immed_index_quad_list_01

  359 r400vgt_immed_index_quad_strip_01       00:00:14 49241 PASS    49241
\\fl_mkelly2\d\r400\regress/49241_020903101448/r400vgt_immed_index_quad_strip_01

  360 r400vgt_immed_index_rectangle_list_01   00:00:12 49241 PASS    49241
\\fl_mkelly2\d\r400\regress/49241_020903101448/r400vgt_immed_index_rectangle_list_01

  361 r400vgt_immed_index_tri_fan_01          00:00:14 49241 PASS    49241
\\fl_mkelly2\d\r400\regress/49241_020903101448/r400vgt_immed_index_tri_fan_01

  362 r400vgt_immed_index_tri_list_01         00:00:15 49241 PASS    49241
\\fl_mkelly2\d\r400\regress/49241_020903101448/r400vgt_immed_index_tri_list_01

  363 r400vgt_immed_index_tri_strip_01        00:00:15 49241 PASS    49241
\\fl_mkelly2\d\r400\regress/49241_020903101448/r400vgt_immed_index_tri_strip_01

  364 r400vgt_immed_index_tri_wflags_01       00:00:11 49241 PASS    49241
\\fl_mkelly2\d\r400\regress/49241_020903101448/r400vgt_immed_index_tri_wflags_01

  365 r400vgt_index_dealloc_line_list_01      00:00:21 49241 PASS    49241
\\fl_mkelly2\d\r400\regress/49241_020903101448/r400vgt_index_dealloc_line_list_01

  366 r400vgt_index_dealloc_points_01         00:00:26 49241 PASS    49241
\\fl_mkelly2\d\r400\regress/49241_020903101448/r400vgt_index_dealloc_points_01

  367 r400vgt_index_dealloc_triangle_list_01  00:00:41 49241 PASS    49241

```

AMD1044\_0185674

```

\\fl_mkelly2\d\r400\regress/49241_020903101448/r400vgt_index_dealloc_triangle_list_01

368 r400vgt_index_min_max_01                00:00:16 49241 PASS    49241
\\fl_mkelly2\d\r400\regress/49241_020903101448/r400vgt_index_min_max_01

369 r400vgt_index_min_max_02                00:00:16 49241 PASS    49241
\\fl_mkelly2\d\r400\regress/49241_020903101448/r400vgt_index_min_max_02

370 r400vgt_index_offset_01                 00:00:14 49241 PASS    49241
\\fl_mkelly2\d\r400\regress/49241_020903101448/r400vgt_index_offset_01

371 r400vgt_index_offset_02                 00:00:14 49241 PASS    49241
\\fl_mkelly2\d\r400\regress/49241_020903101448/r400vgt_index_offset_02

372 r400vgt_index_offset_03                 00:00:14 49241 PASS    49241
\\fl_mkelly2\d\r400\regress/49241_020903101448/r400vgt_index_offset_03

373 r400vgt_index_size_01                   00:00:16 49241 PASS    49241
\\fl_mkelly2\d\r400\regress/49241_020903101448/r400vgt_index_size_01

374 r400vgt_index_source_switch_01          00:00:16 49241 PASS    49241
\\fl_mkelly2\d\r400\regress/49241_020903101448/r400vgt_index_source_switch_01

375 r400vgt_line_list_01                    00:00:18 49241 PASS    49241
\\fl_mkelly2\d\r400\regress/49241_020903101448/r400vgt_line_list_01

376 r400vgt_line_loop_01                    00:00:18 49241 PASS    49241
\\fl_mkelly2\d\r400\regress/49241_020903101448/r400vgt_line_loop_01

377 r400vgt_line_strip_01                   00:00:28 49241 PASS    49241
\\fl_mkelly2\d\r400\regress/49241_020903101448/r400vgt_line_strip_01

378 r400vgt_pass_thru_all_prims_01          00:00:12 49241 PASS    49241
\\fl_mkelly2\d\r400\regress/49241_020903101448/r400vgt_pass_thru_all_prims_01

379 r400vgt_point_list_01                   00:00:17 49241 PASS    49241
\\fl_mkelly2\d\r400\regress/49241_020903101448/r400vgt_point_list_01

380 r400vgt_polygon_01                       00:00:16 49241 PASS    49241
      \\fl_mkelly2\d\r400\regress/49241_020903101448/r400vgt_polygon_01

381 r400vgt_provoking_vtx_all_01            00:00:12 49241 PASS    49241
\\fl_mkelly2\d\r400\regress/49241_020903101448/r400vgt_provoking_vtx_all_01

382 r400vgt_provoking_vtx_edgeflags_all_01 00:00:13 49241 PASS    49241
\\fl_mkelly2\d\r400\regress/49241_020903101448/r400vgt_provoking_vtx_edgeflags_all_01

383 r400vgt_quad_list_01                     00:00:14 49241 PASS    49241

```

```

\\fl_mkelly2\d\r400\regress/49241_020903101448/r400vgt_quad_list_01

384 r400vgt_quad_strip_01                00:00:15 49241 PASS    49241
\\fl_mkelly2\d\r400\regress/49241_020903101448/r400vgt_quad_strip_01

385 r400vgt_rectangle_list_01           00:00:15 49241 PASS    49241
\\fl_mkelly2\d\r400\regress/49241_020903101448/r400vgt_rectangle_list_01

386 r400vgt_reuse_depth_line_list_01    00:00:19 49241 PASS    49241
\\fl_mkelly2\d\r400\regress/49241_020903101448/r400vgt_reuse_depth_line_list_01

387 r400vgt_reuse_depth_point_list_01   00:00:21 49241 PASS    49241
\\fl_mkelly2\d\r400\regress/49241_020903101448/r400vgt_reuse_depth_point_list_01

388 r400vgt_reuse_depth_triangle_list_01 00:00:27 49241 PASS    49241
\\fl_mkelly2\d\r400\regress/49241_020903101448/r400vgt_reuse_depth_triangle_list_01

389 r400vgt_reuse_index_line_list_01    00:01:10 49241 PASS    49241
\\fl_mkelly2\d\r400\regress/49241_020903101448/r400vgt_reuse_index_line_list_01

390 r400vgt_reuse_index_point_list_01   00:00:33 49241 PASS    49241
\\fl_mkelly2\d\r400\regress/49241_020903101448/r400vgt_reuse_index_point_list_01

391 r400vgt_reuse_index_triangle_list_01 00:00:43 49241 PASS    49241
\\fl_mkelly2\d\r400\regress/49241_020903101448/r400vgt_reuse_index_triangle_list_01

392 r400vgt_reuse_index_triangle_list_02 00:00:12 49241 PASS    49241
\\fl_mkelly2\d\r400\regress/49241_020903101448/r400vgt_reuse_index_triangle_list_02

393 r400vgt_reuse_index_triangle_list_03 00:00:12 49241 PASS    49241
\\fl_mkelly2\d\r400\regress/49241_020903101448/r400vgt_reuse_index_triangle_list_03

394 r400vgt_triangle_fan_01             00:00:13 49241 PASS    49241
\\fl_mkelly2\d\r400\regress/49241_020903101448/r400vgt_triangle_fan_01

395 r400vgt_triangle_list_01            00:00:15 49241 PASS    49241
\\fl_mkelly2\d\r400\regress/49241_020903101448/r400vgt_triangle_list_01

396 r400vgt_triangle_strip_01           00:00:15 49241 PASS    49241
\\fl_mkelly2\d\r400\regress/49241_020903101448/r400vgt_triangle_strip_01

397 r400vgt_triangle_wflags_01          00:00:16 49241 PASS    49241
\\fl_mkelly2\d\r400\regress/49241_020903101448/r400vgt_triangle_wflags_01

398 r400vgt_vtx_vector_packing_01       00:00:16 49241 PASS    49241
\\fl_mkelly2\d\r400\regress/49241_020903101448/r400vgt_vtx_vector_packing_01

399 r400vgt_multi_context_01            00:00:15 49241 PASS    49241

```

```

\\fl_mkelly2\d\r400\regress/49241_020903101448/r400vgt_multi_context_01

400 r400vgt_multi_context_02                00:00:18 49241 PASS      49241
\\fl_mkelly2\d\r400\regress/49241_020903101448/r400vgt_multi_context_02

401 r400vgt_multi_context_03                00:00:18 49241 PASS      49241
\\fl_mkelly2\d\r400\regress/49241_020903101448/r400vgt_multi_context_03

402 r400vgt_multi_context_04                00:00:19 49241 PASS      49241
\\fl_mkelly2\d\r400\regress/49241_020903101448/r400vgt_multi_context_04

403 r400vgt_multi_context_05                00:00:29 49241 PASS      49241
\\fl_mkelly2\d\r400\regress/49241_020903101448/r400vgt_multi_context_05

404 r400vgt_multi_context_06                00:00:18 49241 PASS      49241
\\fl_mkelly2\d\r400\regress/49241_020903101448/r400vgt_multi_context_06

405 r400vgt_multi_context_07                00:00:17 49241 PASS      49241
\\fl_mkelly2\d\r400\regress/49241_020903101448/r400vgt_multi_context_07

406 r400vgt_multi_context_08                00:00:17 49241 PASS      49241
\\fl_mkelly2\d\r400\regress/49241_020903101448/r400vgt_multi_context_08

407 r400vgt_multi_context_09                00:00:18 49241 PASS      49241
\\fl_mkelly2\d\r400\regress/49241_020903101448/r400vgt_multi_context_09

408 r400vgt_multi_context_10                00:00:17 49241 PASS      49241
\\fl_mkelly2\d\r400\regress/49241_020903101448/r400vgt_multi_context_10

409 r400vgt_multi_context_11                00:00:17 49241 PASS      49241
\\fl_mkelly2\d\r400\regress/49241_020903101448/r400vgt_multi_context_11

410 r400vgt_multi_context_12                00:00:18 49241 PASS      49241
\\fl_mkelly2\d\r400\regress/49241_020903101448/r400vgt_multi_context_12

411 r400vgt_suppress_eop_01                 00:00:17 49241 PASS      49241
\\fl_mkelly2\d\r400\regress/49241_020903101448/r400vgt_suppress_eop_01

412 r400vgt_suppress_eop_02                 00:00:15 49241 PASS      49241
\\fl_mkelly2\d\r400\regress/49241_020903101448/r400vgt_suppress_eop_02

413 r400vgt_suppress_eop_03                 00:00:25 49241 PASS      49241
\\fl_mkelly2\d\r400\regress/49241_020903101448/r400vgt_suppress_eop_03

414 r400vgt_suppress_eop_04                 00:00:35 49241 FAIL
compare mismatch No

415 r400su_4tri_text_offscreen_01           00:00:12 49241 PASS      49241
\\fl_mkelly2\d\r400\regress/49241_020903101448/r400su_4tri_text_offscreen_01

```

AMD1044\_0185677

416	r400su_baryc_test_01	00:00:12	49241	PASS	49241
\\fl_mkelly2\d\r400\regress/49241_020903101448/r400su_baryc_test_01					
417	r400su_baryc_test_02	00:00:12	49241	PASS	49241
\\fl_mkelly2\d\r400\regress/49241_020903101448/r400su_baryc_test_02					
418	r400su_baryc_test_03	00:00:54	49241	PASS	49241
\\fl_mkelly2\d\r400\regress/49241_020903101448/r400su_baryc_test_03					
419	r400su_baryc_test_04	00:00:16	49241	PASS	49241
\\fl_mkelly2\d\r400\regress/49241_020903101448/r400su_baryc_test_04					
420	r400su_clip_edgflag_polymode_01	00:00:10	49241	FAIL	
compare mismatch No					
421	r400su_clip_pointsize_test_01	00:00:11	49241	PASS	49241
\\fl_mkelly2\d\r400\regress/49241_020903101448/r400su_clip_pointsize_test_01					
422	r400su_clip_pointttest_01	00:00:14	49241	PASS	49241
\\fl_mkelly2\d\r400\regress/49241_020903101448/r400su_clip_pointttest_01					
423	r400su_clip_pointttest_02	00:00:14	49241	PASS	49241
\\fl_mkelly2\d\r400\regress/49241_020903101448/r400su_clip_pointttest_02					
424	r400su_clip_pointttest_03	00:00:14	49241	PASS	49241
\\fl_mkelly2\d\r400\regress/49241_020903101448/r400su_clip_pointttest_03					
425	r400su_clip_pointttest_04	00:00:14	49241	PASS	49241
\\fl_mkelly2\d\r400\regress/49241_020903101448/r400su_clip_pointttest_04					
426	r400su_clip_polymode_test_01	00:00:30	49241	PASS	49241
\\fl_mkelly2\d\r400\regress/49241_020903101448/r400su_clip_polymode_test_01					
427	r400su_clipline_01	00:00:11	49241	PASS	49241
\\fl_mkelly2\d\r400\regress/49241_020903101448/r400su_clipline_01					
428	r400su_clippoint_01	00:00:10	49241	PASS	49241
\\fl_mkelly2\d\r400\regress/49241_020903101448/r400su_clippoint_01					
429	r400su_clipvertexsortingfunctional_01	00:00:11	49241	PASS	49241
\\fl_mkelly2\d\r400\regress/49241_020903101448/r400su_clipvertexsortingfunctional_01					
430	r400su_cullingfunctional_01	00:00:10	49241	PASS	49241
\\fl_mkelly2\d\r400\regress/49241_020903101448/r400su_cullingfunctional_01					
431	r400su_degentri_test_01	00:00:12	49241	PASS	49241
\\fl_mkelly2\d\r400\regress/49241_020903101448/r400su_degentri_test_01					

AMD1044\_0185678

```

432 r400su_degentri_test_02                00:00:12 49241 PASS    49241
\\fl_mkelly2\d\r400\regress/49241_020903101448/r400su_degentri_test_02

433 r400su_degentri_test_03                00:00:11 49241 PASS    49241
\\fl_mkelly2\d\r400\regress/49241_020903101448/r400su_degentri_test_03

434 r400su_edge_flag_01                    00:00:10 49241 PASS    49241
      \\fl_mkelly2\d\r400\regress/49241_020903101448/r400su_edge_flag_01

435 r400su_edge_flag_02                    00:00:10 49241 PASS    49241
      \\fl_mkelly2\d\r400\regress/49241_020903101448/r400su_edge_flag_02

436 r400su_edgeflags_triangle_01           00:00:18 49241 PASS    49241
\\fl_mkelly2\d\r400\regress/49241_020903101448/r400su_edgeflags_triangle_01

437 r400su_edgeflags_triangle_02           00:00:18 49241 PASS    49241
\\fl_mkelly2\d\r400\regress/49241_020903101448/r400su_edgeflags_triangle_02

438 r400su_geom_sort_01                    00:00:12 49241 PASS    49241
      \\fl_mkelly2\d\r400\regress/49241_020903101448/r400su_geom_sort_01

439 r400su_line_end_cap_functional_01       00:00:13 49241 PASS    49241
\\fl_mkelly2\d\r400\regress/49241_020903101448/r400su_line_end_cap_functional_01

440 r400su_line_end_cap_width_functional_02 00:00:12 49241 PASS    49241
\\fl_mkelly2\d\r400\regress/49241_020903101448/r400su_line_end_cap_width_functional_02

441 r400su_line_test_01                    00:00:10 49241 PASS    49241
      \\fl_mkelly2\d\r400\regress/49241_020903101448/r400su_line_test_01

442 r400su_line_test_02                    00:00:03 49241 FAIL
cmp file missing No

443 r400su_longstrip_01                    00:00:11 49241 PASS    49241
      \\fl_mkelly2\d\r400\regress/49241_020903101448/r400su_longstrip_01

444 r400su_multi_prim_01                   00:00:12 49241 PASS    49241
\\fl_mkelly2\d\r400\regress/49241_020903101448/r400su_multi_prim_01

445 r400su_parallel_orientation_all_01      00:00:11 49241 PASS    49241
\\fl_mkelly2\d\r400\regress/49241_020903101448/r400su_parallel_orientation_all_01

446 r400su_parallel_orientation_all_02      00:00:13 49241 PASS    49241
\\fl_mkelly2\d\r400\regress/49241_020903101448/r400su_parallel_orientation_all_02

447 r400su_pc_management_01                00:00:16 49241 PASS    49241
\\fl_mkelly2\d\r400\regress/49241_020903101448/r400su_pc_management_01

448 r400su_pc_management_02                00:00:15 49241 PASS    49241

```



```

\\fl_mkelly2\d\r400\regress/49241_020903101448/r400su_pc_management_02

449 r400su_pc_management_03                00:00:15 49241 PASS    49241
\\fl_mkelly2\d\r400\regress/49241_020903101448/r400su_pc_management_03

450 r400su_point_sprite_01                 00:00:10 49241 PASS    49241
\\fl_mkelly2\d\r400\regress/49241_020903101448/r400su_point_sprite_01

451 r400su_point_sprite_02                 00:00:10 49241 PASS    49241
\\fl_mkelly2\d\r400\regress/49241_020903101448/r400su_point_sprite_02

452 r400su_point_sprite_03                 00:00:10 49241 PASS    49241
\\fl_mkelly2\d\r400\regress/49241_020903101448/r400su_point_sprite_03

453 r400su_point_sprite_04                 00:00:10 49241 PASS    49241
\\fl_mkelly2\d\r400\regress/49241_020903101448/r400su_point_sprite_04

454 r400su_point_sprite_05                 00:00:10 49241 PASS    49241
\\fl_mkelly2\d\r400\regress/49241_020903101448/r400su_point_sprite_05

455 r400su_point_sprite_06                 00:00:10 49241 PASS    49241
\\fl_mkelly2\d\r400\regress/49241_020903101448/r400su_point_sprite_06

456 r400su_point_sprite_07                 00:00:19 49241 PASS    49241
\\fl_mkelly2\d\r400\regress/49241_020903101448/r400su_point_sprite_07

457 r400su_point_sprite_08                 00:00:19 49241 PASS    49241
\\fl_mkelly2\d\r400\regress/49241_020903101448/r400su_point_sprite_08

458 r400su_point_wl_hl6_functional_01      00:00:11 49241 PASS    49241
\\fl_mkelly2\d\r400\regress/49241_020903101448/r400su_point_wl_hl6_functional_01

459 r400su_point_wl6_hl_functional_01      00:00:12 49241 PASS    49241
\\fl_mkelly2\d\r400\regress/49241_020903101448/r400su_point_wl6_hl_functional_01

460 r400su_pointsizepresent_01             00:00:10 49241 PASS    49241
\\fl_mkelly2\d\r400\regress/49241_020903101448/r400su_pointsizepresent_01

461 r400su_pointsizepresent_02             00:00:10 49241 PASS    49241
\\fl_mkelly2\d\r400\regress/49241_020903101448/r400su_pointsizepresent_02

462 r400su_polymode_rectangle_01           00:00:10 49241 PASS    49241
\\fl_mkelly2\d\r400\regress/49241_020903101448/r400su_polymode_rectangle_01

463 r400su_polymodeculling_01              00:00:10 49241 PASS    49241
\\fl_mkelly2\d\r400\regress/49241_020903101448/r400su_polymodeculling_01

464 r400su_polymodefunctional_01           00:00:12 49241 PASS    49241

```

AMD1044\_0185680

```

\\fl_mkelly2\d\r400\regress/49241_020903101448/r400su_polymodefuntional_01

465 r400su_provoking_vtx_edgeflags_triangle_01          00:00:18 49241 PASS    49241
\\fl_mkelly2\d\r400\regress/49241_020903101448/r400su_provoking_vtx_edgeflags_triangle_
01
466 r400su_provoking_vtx_edgeflags_triangle_02          00:00:18 49241 PASS    49241
\\fl_mkelly2\d\r400\regress/49241_020903101448/r400su_provoking_vtx_edgeflags_triangle_
02
467 r400su_provoking_vtx_edgeflags_triangle_03          00:00:19 49241 PASS    49241
\\fl_mkelly2\d\r400\regress/49241_020903101448/r400su_provoking_vtx_edgeflags_triangle_
03
468 r400su_provoking_vtx_edgeflags_triangle_04          00:00:19 49241 PASS    49241
\\fl_mkelly2\d\r400\regress/49241_020903101448/r400su_provoking_vtx_edgeflags_triangle_
04
469 r400su_provoking_vtx_line_01                       00:00:11 49241 PASS    49241
\\fl_mkelly2\d\r400\regress/49241_020903101448/r400su_provoking_vtx_line_01

470 r400su_provoking_vtx_point_01                      00:00:10 49241 PASS    49241
\\fl_mkelly2\d\r400\regress/49241_020903101448/r400su_provoking_vtx_point_01

471 r400su_provoking_vtx_polymode_rectangle_01         00:00:11 49241 PASS    49241
\\fl_mkelly2\d\r400\regress/49241_020903101448/r400su_provoking_vtx_polymode_rectangle_
01
472 r400su_provoking_vtx_rectangle_01                  00:00:10 49241 PASS    49241
\\fl_mkelly2\d\r400\regress/49241_020903101448/r400su_provoking_vtx_rectangle_01

473 r400su_provoking_vtx_triangle_01                   00:00:12 49241 PASS    49241
\\fl_mkelly2\d\r400\regress/49241_020903101448/r400su_provoking_vtx_triangle_01

474 r400su_rand_line_01                                 00:00:28 49241 PASS    49241
      \\fl_mkelly2\d\r400\regress/49241_020903101448/r400su_rand_line_01

475 r400su_rand_point_01                               00:00:30 49241 PASS    49241
\\fl_mkelly2\d\r400\regress/49241_020903101448/r400su_rand_point_01

476 r400su_rand_tri_01                                 00:00:31 49241 PASS    49241
      \\fl_mkelly2\d\r400\regress/49241_020903101448/r400su_rand_tri_01

477 r400su_rectangle_list_01                           00:00:10 49241 PASS    49241
\\fl_mkelly2\d\r400\regress/49241_020903101448/r400su_rectangle_list_01

478 r400su_sliver_01                                   00:00:10 49241 PASS    49241
      \\fl_mkelly2\d\r400\regress/49241_020903101448/r400su_sliver_01

479 r400su_triarea_test_01                             00:00:10 49241 PASS    49241
\\fl_mkelly2\d\r400\regress/49241_020903101448/r400su_triarea_test_01

480 r400su_triarea_test_02                             00:00:12 49241 PASS    49241

```

AMD1044\_0185681

```

\\fl_mkelly2\d\r400\regress/49241_020903101448/r400su_triarea_test_02

481 r400su_triarea_test_03                00:00:15 49241 PASS    49241
\\fl_mkelly2\d\r400\regress/49241_020903101448/r400su_triarea_test_03

482 r400su_triarea_test_04                00:00:28 49241 PASS    49241
\\fl_mkelly2\d\r400\regress/49241_020903101448/r400su_triarea_test_04

483 r400su_vertexsortingfunctional_01     00:00:11 49241 PASS    49241
\\fl_mkelly2\d\r400\regress/49241_020903101448/r400su_vertexsortingfunctional_01

484 r400su_polymode_lines_zero_area_triangle_01  00:00:18 49241 PASS    49241
\\fl_mkelly2\d\r400\regress/49241_020903101448/r400su_polymode_lines_zero_area_triangle_01

485 r400su_polymode_lines_zero_area_triangle_02  00:00:18 49241 PASS    49241
\\fl_mkelly2\d\r400\regress/49241_020903101448/r400su_polymode_lines_zero_area_triangle_02

486 r400su_polymode_points_zero_area_triangle_01 00:00:18 49241 PASS    49241
\\fl_mkelly2\d\r400\regress/49241_020903101448/r400su_polymode_points_zero_area_triangle_01

487 r400su_polymode_points_zero_area_triangle_02 00:00:19 49241 PASS    49241
\\fl_mkelly2\d\r400\regress/49241_020903101448/r400su_polymode_points_zero_area_triangle_02

488 r400su_polymode_zero_area_triangle_01      00:00:19 49241 PASS    49241
\\fl_mkelly2\d\r400\regress/49241_020903101448/r400su_polymode_zero_area_triangle_01

489 r400su_polymode_zero_area_triangle_02      00:00:18 49241 PASS    49241
\\fl_mkelly2\d\r400\regress/49241_020903101448/r400su_polymode_zero_area_triangle_02

490 r400su_polymode_zero_area_triangle_03      00:00:18 49241 PASS    49241
\\fl_mkelly2\d\r400\regress/49241_020903101448/r400su_polymode_zero_area_triangle_03

491 r400su_polymode_zero_area_triangle_04      00:00:18 49241 PASS    49241
\\fl_mkelly2\d\r400\regress/49241_020903101448/r400su_polymode_zero_area_triangle_04

492 r400su_polymode_lines_degen_triangle_01    00:00:18 49241 PASS    49241
\\fl_mkelly2\d\r400\regress/49241_020903101448/r400su_polymode_lines_degen_triangle_01

493 r400su_polymode_lines_degen_triangle_02    00:00:19 49241 PASS    49241
\\fl_mkelly2\d\r400\regress/49241_020903101448/r400su_polymode_lines_degen_triangle_02

494 r400su_polymode_points_degen_triangle_01   00:00:18 49241 PASS    49241
\\fl_mkelly2\d\r400\regress/49241_020903101448/r400su_polymode_points_degen_triangle_01

495 r400su_polymode_points_degen_triangle_02   00:00:19 49241 PASS    49241
\\fl_mkelly2\d\r400\regress/49241_020903101448/r400su_polymode_points_degen_triangle_02

496 r400vte_coverage_01                     00:00:14 49241 PASS    49241

```

\\fl\_mkelly2\d\r400\regress/49241\_020903101448/r400vte\_coverage\_01

497	r400vte_simple_point_01	00:00:10	49241	PASS	49241
\\fl_mkelly2\d\r400\regress/49241_020903101448/r400vte_simple_point_01					
498	r400vte_simple_triangle_01	00:00:09	49241	PASS	49241
\\fl_mkelly2\d\r400\regress/49241_020903101448/r400vte_simple_triangle_01					
499	r400vte_w0_fmt_01	00:00:10	49241	PASS	49241
\\fl_mkelly2\d\r400\regress/49241_020903101448/r400vte_w0_fmt_01					
500	r400vte_w0_fmt_03	00:00:09	49241	PASS	49241
\\fl_mkelly2\d\r400\regress/49241_020903101448/r400vte_w0_fmt_03					
501	r400vte_xy_fmt_01	00:00:10	49241	PASS	49241
\\fl_mkelly2\d\r400\regress/49241_020903101448/r400vte_xy_fmt_01					
502	r400vte_xyz_scale_01	00:00:09	49241	PASS	49241
\\fl_mkelly2\d\r400\regress/49241_020903101448/r400vte_xyz_scale_01					
503	r400vte_xyz_scale_02	00:00:10	49241	PASS	49241
\\fl_mkelly2\d\r400\regress/49241_020903101448/r400vte_xyz_scale_02					
504	r400vte_z_fmt_01	00:00:09	49241	PASS	49241
\\fl_mkelly2\d\r400\regress/49241_020903101448/r400vte_z_fmt_01					
505	r400sanity_persp_projection_01	00:00:08	49241	PASS	49241
\\fl_mkelly2\d\r400\regress/49241_020903101448/r400sanity_persp_projection_01					
506	r400sanity_vfd_texture_sample_01	00:00:11	49241	FAIL	
compare mismatch No					
507	primlib_1st_tri_june15	00:00:10	49241	PASS	49241
\\fl_mkelly2\d\r400\regress/49241_020903101448/primlib_1st_tri_june15					
508	primlib_gouraud_tri_1_xyz_vb_1_rgb_vb	00:00:12	49241	PASS	49241
\\fl_mkelly2\d\r400\regress/49241_020903101448/primlib_gouraud_tri_1_xyz_vb_1_rgb_vb					
509	primlib_gouraud_triangles_2_draw_passes	00:00:15	49241	PASS	49241
\\fl_mkelly2\d\r400\regress/49241_020903101448/primlib_gouraud_triangles_2_draw_passes					
510	primlib_parameterized_simple_triangle	00:00:12	49241	PASS	49241
\\fl_mkelly2\d\r400\regress/49241_020903101448/primlib_parameterized_simple_triangle					
511	primlib_template_simple_triangle	00:00:11	49241	FAIL	
compare mismatch No					
512	primlib_tex_tri	00:00:13	49241	PASS	49241
\\fl_mkelly2\d\r400\regress/49241_020903101448/primlib_tex_tri					

AMD1044\_0185683

+-----+  
-----+

03:10:51

```

+-----+
+ Regression Summary:  R400 EMU SYNC 49241
+ Date: Tue Sep  3 22:11:47 2002
+-----+
+ UNIT | Total Tests | Tests Run | Tests Pass | %Pass |
+-----+
  SC      159      159      157      98.74
  VGT     147     147     144     97.96
  CL      110     108     107     99.07
  SU       81      81      79     97.53
  VTE      9       9       9    100.00
  SANITY   2       2       1     50.00
  STRESS   0       0       0      0.00
  MISC     6       6       5     83.33
+-----+
  PA      514     512     502     98.05
+-----+

```

```

+-----+
+-----+
+ R400 EMU TEST REGRESS HISTORY Wed Sep  4 23:20:17 2002
+-----+
+-----+
+ No Test Name                               Emu Time Sync  Status
LastPass FailReason           MostRecentPath +
+-----+
+-----+
1 r400sc_msaa_8_02                       00:00:10 49431 PASS    49431
   \\fl_mkelly2\d\r400\regress/49431_020904090906/r400sc_msaa_8_02

2 r400sc_msaa_8_03                       00:00:10 49431 PASS    49431
   \\fl_mkelly2\d\r400\regress/49431_020904090906/r400sc_msaa_8_03

3 r400sc_msaa_8_04                       00:00:10 49431 PASS    49431
   \\fl_mkelly2\d\r400\regress/49431_020904090906/r400sc_msaa_8_04

4 r400sc_msaa_8_05                       00:00:10 49431 PASS    49431
   \\fl_mkelly2\d\r400\regress/49431_020904090906/r400sc_msaa_8_05

5 r400sc_bres_cntl_01                   00:00:13 49431 PASS    49431
   \\fl_mkelly2\d\r400\regress/49431_020904090906/r400sc_bres_cntl_01

6 r400sc_bres_cntl_02                   00:00:31 49431 PASS    49431
   \\fl_mkelly2\d\r400\regress/49431_020904090906/r400sc_bres_cntl_02

7 r400sc_bres_cntl_03                   00:00:31 49431 PASS    49431
   \\fl_mkelly2\d\r400\regress/49431_020904090906/r400sc_bres_cntl_03

8 r400sc_bres_cntl_04                   00:00:34 49431 PASS    49431
   \\fl_mkelly2\d\r400\regress/49431_020904090906/r400sc_bres_cntl_04

9 r400sc_clip_rect_01                   00:00:18 49431 PASS    49431
   \\fl_mkelly2\d\r400\regress/49431_020904090906/r400sc_clip_rect_01

10 r400sc_clip_rect_02                   00:00:17 49431 PASS    49431
   \\fl_mkelly2\d\r400\regress/49431_020904090906/r400sc_clip_rect_02

11 r400sc_clip_rect_03                   00:00:24 49431 PASS    49431
   \\fl_mkelly2\d\r400\regress/49431_020904090906/r400sc_clip_rect_03

12 r400sc_clip_rect_04                   00:00:18 49431 PASS    49431
   \\fl_mkelly2\d\r400\regress/49431_020904090906/r400sc_clip_rect_04

13 r400sc_clip_rect_fc_01                00:00:10 49431 PASS    49431
   \\fl_mkelly2\d\r400\regress/49431_020904090906/r400sc_clip_rect_fc_01

```

AMD1044\_0185686

14 r400sc\_diamond\_exit\_01 00:00:10 49431 PASS 49431  
\\fl\_mkelly2\d\r400\regress/49431\_020904090906/r400sc\_diamond\_exit\_01

15 r400sc\_diamond\_exit\_02 00:00:10 49431 PASS 49431  
\\fl\_mkelly2\d\r400\regress/49431\_020904090906/r400sc\_diamond\_exit\_02

16 r400sc\_diamond\_exit\_03 00:00:10 49431 PASS 49431  
\\fl\_mkelly2\d\r400\regress/49431\_020904090906/r400sc\_diamond\_exit\_03

17 r400sc\_diamond\_exit\_04 00:00:10 49431 PASS 49431  
\\fl\_mkelly2\d\r400\regress/49431\_020904090906/r400sc\_diamond\_exit\_04

18 r400sc\_diamond\_exit\_05 00:00:10 49431 PASS 49431  
\\fl\_mkelly2\d\r400\regress/49431\_020904090906/r400sc\_diamond\_exit\_05

19 r400sc\_jss\_1x2\_01 00:00:10 49431 PASS 49431  
\\fl\_mkelly2\d\r400\regress/49431\_020904090906/r400sc\_jss\_1x2\_01

20 r400sc\_jss\_1x2\_02 00:00:11 49431 PASS 49431  
\\fl\_mkelly2\d\r400\regress/49431\_020904090906/r400sc\_jss\_1x2\_02

21 r400sc\_jss\_1x3\_01 00:00:10 49431 PASS 49431  
\\fl\_mkelly2\d\r400\regress/49431\_020904090906/r400sc\_jss\_1x3\_01

22 r400sc\_jss\_1x3\_02 00:00:12 49431 PASS 49431  
\\fl\_mkelly2\d\r400\regress/49431\_020904090906/r400sc\_jss\_1x3\_02

23 r400sc\_jss\_1x4\_01 00:00:15 49431 PASS 49431  
\\fl\_mkelly2\d\r400\regress/49431\_020904090906/r400sc\_jss\_1x4\_01

24 r400sc\_jss\_1x4\_02 00:00:12 49431 PASS 49431  
\\fl\_mkelly2\d\r400\regress/49431\_020904090906/r400sc\_jss\_1x4\_02

25 r400sc\_jss\_2x1\_01 00:00:11 49431 PASS 49431  
\\fl\_mkelly2\d\r400\regress/49431\_020904090906/r400sc\_jss\_2x1\_01

26 r400sc\_jss\_2x1\_02 00:00:11 49431 PASS 49431  
\\fl\_mkelly2\d\r400\regress/49431\_020904090906/r400sc\_jss\_2x1\_02

27 r400sc\_jss\_2x2\_01 00:00:10 49431 PASS 49431  
\\fl\_mkelly2\d\r400\regress/49431\_020904090906/r400sc\_jss\_2x2\_01

28 r400sc\_jss\_2x2\_02 00:00:12 49431 PASS 49431  
\\fl\_mkelly2\d\r400\regress/49431\_020904090906/r400sc\_jss\_2x2\_02

29 r400sc\_jss\_2x3\_01 00:00:11 49431 PASS 49431  
\\fl\_mkelly2\d\r400\regress/49431\_020904090906/r400sc\_jss\_2x3\_01

AMD1044\_0185687



30 r400sc\_jss\_2x3\_02 00:00:14 49431 PASS 49431  
\\fl\_mkelly2\d\r400\regress/49431\_020904090906/r400sc\_jss\_2x3\_02

31 r400sc\_jss\_2x4\_01 00:00:10 49431 PASS 49431  
\\fl\_mkelly2\d\r400\regress/49431\_020904090906/r400sc\_jss\_2x4\_01

32 r400sc\_jss\_2x4\_02 00:00:16 49431 PASS 49431  
\\fl\_mkelly2\d\r400\regress/49431\_020904090906/r400sc\_jss\_2x4\_02

33 r400sc\_jss\_3x1\_01 00:00:11 49431 PASS 49431  
\\fl\_mkelly2\d\r400\regress/49431\_020904090906/r400sc\_jss\_3x1\_01

34 r400sc\_jss\_3x1\_02 00:00:12 49431 PASS 49431  
\\fl\_mkelly2\d\r400\regress/49431\_020904090906/r400sc\_jss\_3x1\_02

35 r400sc\_jss\_3x2\_01 00:00:11 49431 PASS 49431  
\\fl\_mkelly2\d\r400\regress/49431\_020904090906/r400sc\_jss\_3x2\_01

36 r400sc\_jss\_3x2\_02 00:00:15 49431 PASS 49431  
\\fl\_mkelly2\d\r400\regress/49431\_020904090906/r400sc\_jss\_3x2\_02

37 r400sc\_jss\_3x3\_01 00:00:11 49431 PASS 49431  
\\fl\_mkelly2\d\r400\regress/49431\_020904090906/r400sc\_jss\_3x3\_01

38 r400sc\_jss\_3x3\_02 00:00:17 49431 PASS 49431  
\\fl\_mkelly2\d\r400\regress/49431\_020904090906/r400sc\_jss\_3x3\_02

39 r400sc\_jss\_3x4\_01 00:00:11 49431 PASS 49431  
\\fl\_mkelly2\d\r400\regress/49431\_020904090906/r400sc\_jss\_3x4\_01

40 r400sc\_jss\_3x4\_02 00:00:09 49431 PASS 49431  
\\fl\_mkelly2\d\r400\regress/49431\_020904090906/r400sc\_jss\_3x4\_02

41 r400sc\_jss\_3x4\_03 00:00:20 49431 PASS 49431  
\\fl\_mkelly2\d\r400\regress/49431\_020904090906/r400sc\_jss\_3x4\_03

42 r400sc\_jss\_4x1\_01 00:00:10 49431 PASS 49431  
\\fl\_mkelly2\d\r400\regress/49431\_020904090906/r400sc\_jss\_4x1\_01

43 r400sc\_jss\_4x1\_02 00:00:13 49431 PASS 49431  
\\fl\_mkelly2\d\r400\regress/49431\_020904090906/r400sc\_jss\_4x1\_02

44 r400sc\_jss\_4x2\_01 00:00:10 49431 PASS 49431  
\\fl\_mkelly2\d\r400\regress/49431\_020904090906/r400sc\_jss\_4x2\_01

45 r400sc\_jss\_4x2\_02 00:00:16 49431 PASS 49431  
\\fl\_mkelly2\d\r400\regress/49431\_020904090906/r400sc\_jss\_4x2\_02

AMD1044\_0185688

46	r400sc_jss_4x3_01	00:00:10	49431	PASS	49431
	\\fl_mkelly2\d\r400\regress/49431_020904090906/r400sc_jss_4x3_01				
47	r400sc_jss_4x3_02	00:00:19	49431	PASS	49431
	\\fl_mkelly2\d\r400\regress/49431_020904090906/r400sc_jss_4x3_02				
48	r400sc_jss_4x4_01	00:00:12	49431	PASS	49431
	\\fl_mkelly2\d\r400\regress/49431_020904090906/r400sc_jss_4x4_01				
49	r400sc_jss_4x4_02	00:00:22	49431	PASS	49431
	\\fl_mkelly2\d\r400\regress/49431_020904090906/r400sc_jss_4x4_02				
50	r400sc_jss_4x4_03	00:00:10	49431	PASS	49431
	\\fl_mkelly2\d\r400\regress/49431_020904090906/r400sc_jss_4x4_03				
51	r400sc_jss_4x4_aa_mask_01	00:00:21	49431	PASS	49431
	\\fl_mkelly2\d\r400\regress/49431_020904090906/r400sc_jss_4x4_aa_mask_01				
52	r400sc_jss_4x4_aa_mask_02	00:01:48	49431	PASS	49431
	\\fl_mkelly2\d\r400\regress/49431_020904090906/r400sc_jss_4x4_aa_mask_02				
53	r400sc_jss_4x4_fc_01	00:00:11	49431	PASS	49431
	\\fl_mkelly2\d\r400\regress/49431_020904090906/r400sc_jss_4x4_fc_01				
54	r400sc_jss_4x4_fc_02	00:00:16	49431	PASS	49431
	\\fl_mkelly2\d\r400\regress/49431_020904090906/r400sc_jss_4x4_fc_02				
55	r400sc_jss_4x4_max_dist_01	00:00:10	49431	PASS	49431
	\\fl_mkelly2\d\r400\regress/49431_020904090906/r400sc_jss_4x4_max_dist_01				
56	r400sc_line_dx10_eq_0_01	00:00:09	49431	PASS	49431
	\\fl_mkelly2\d\r400\regress/49431_020904090906/r400sc_line_dx10_eq_0_01				
57	r400sc_line_dx10_ge_0_01	00:00:21	49431	PASS	49431
	\\fl_mkelly2\d\r400\regress/49431_020904090906/r400sc_line_dx10_ge_0_01				
58	r400sc_line_dx10_lt_0_01	00:00:10	49431	PASS	49431
	\\fl_mkelly2\d\r400\regress/49431_020904090906/r400sc_line_dx10_lt_0_01				
59	r400sc_line_dy10_eq_0_01	00:00:09	49431	PASS	49431
	\\fl_mkelly2\d\r400\regress/49431_020904090906/r400sc_line_dy10_eq_0_01				
60	r400sc_line_dy10_ge_0_01	00:00:10	49431	PASS	49431
	\\fl_mkelly2\d\r400\regress/49431_020904090906/r400sc_line_dy10_ge_0_01				
61	r400sc_line_dy10_lt_0_01	00:00:09	49431	PASS	49431
	\\fl_mkelly2\d\r400\regress/49431_020904090906/r400sc_line_dy10_lt_0_01				

62	r400sc_line_expand_width_msa_8_01	00:00:17	49431	PASS	49431
\\fl_mkelly2\d\r400\regress/49431_020904090906/r400sc_line_expand_width_msa_8_01					
63	r400sc_line_expand_width_msa_8_02	00:00:19	49431	PASS	49431
\\fl_mkelly2\d\r400\regress/49431_020904090906/r400sc_line_expand_width_msa_8_02					
64	r400sc_line_expand_width_msa_8_03	00:00:18	49431	PASS	49431
\\fl_mkelly2\d\r400\regress/49431_020904090906/r400sc_line_expand_width_msa_8_03					
65	r400sc_line_jss_3x4_01	00:00:11	49431	PASS	49431
\\fl_mkelly2\d\r400\regress/49431_020904090906/r400sc_line_jss_3x4_01					
66	r400sc_line_list_01	00:00:10	49431	PASS	49431
\\fl_mkelly2\d\r400\regress/49431_020904090906/r400sc_line_list_01					
67	r400sc_line_list_02	00:00:10	49431	FAIL	
gold or cmp file mis					
68	r400sc_line_list_concentric_circle_01	00:00:18	49431	PASS	49431
\\fl_mkelly2\d\r400\regress/49431_020904090906/r400sc_line_list_concentric_circle_01					
69	r400sc_line_list_concentric_circle_02	00:00:26	49431	PASS	49431
\\fl_mkelly2\d\r400\regress/49431_020904090906/r400sc_line_list_concentric_circle_02					
70	r400sc_line_list_concentric_circle_03	00:00:41	49431	PASS	49431
\\fl_mkelly2\d\r400\regress/49431_020904090906/r400sc_line_list_concentric_circle_03					
71	r400sc_line_list_textured_01	00:00:10	49431	PASS	49431
\\fl_mkelly2\d\r400\regress/49431_020904090906/r400sc_line_list_textured_01					
72	r400sc_line_list_verify_st_01	00:00:09	49431	PASS	49431
\\fl_mkelly2\d\r400\regress/49431_020904090906/r400sc_line_list_verify_st_01					
73	r400sc_line_msa_8_01	00:00:11	49431	PASS	49431
\\fl_mkelly2\d\r400\regress/49431_020904090906/r400sc_line_msa_8_01					
74	r400sc_line_stipple_01	00:00:10	49431	PASS	49431
\\fl_mkelly2\d\r400\regress/49431_020904090906/r400sc_line_stipple_01					
75	r400sc_line_stipple_02	00:00:10	49431	PASS	49431
\\fl_mkelly2\d\r400\regress/49431_020904090906/r400sc_line_stipple_02					
76	r400sc_line_stipple_03	00:00:09	49431	PASS	49431
\\fl_mkelly2\d\r400\regress/49431_020904090906/r400sc_line_stipple_03					
77	r400sc_line_stipple_04	00:00:10	49431	PASS	49431
\\fl_mkelly2\d\r400\regress/49431_020904090906/r400sc_line_stipple_04					

78	r400sc_line_stipple_05	00:00:10	49431	PASS	49431
\\fl_mkelly2\d\r400\regress\49431_020904090906\r400sc_line_stipple_05					
79	r400sc_line_stipple_06	00:00:10	49431	PASS	49431
\\fl_mkelly2\d\r400\regress\49431_020904090906\r400sc_line_stipple_06					
80	r400sc_line_stipple_07	00:00:19	49431	PASS	49431
\\fl_mkelly2\d\r400\regress\49431_020904090906\r400sc_line_stipple_07					
81	r400sc_line_stipple_08	00:00:25	49431	PASS	49431
\\fl_mkelly2\d\r400\regress\49431_020904090906\r400sc_line_stipple_08					
82	r400sc_line_stipple_09	00:00:18	49431	PASS	49431
\\fl_mkelly2\d\r400\regress\49431_020904090906\r400sc_line_stipple_09					
83	r400sc_line_stipple_fc_08	00:00:11	49431	PASS	49431
\\fl_mkelly2\d\r400\regress\49431_020904090906\r400sc_line_stipple_fc_08					
84	r400sc_line_strip_stipple_01	00:00:09	49431	PASS	49431
\\fl_mkelly2\d\r400\regress\49431_020904090906\r400sc_line_strip_stipple_01					
85	r400sc_msaa_1_01	00:00:16	49431	PASS	49431
\\fl_mkelly2\d\r400\regress\49431_020904090906\r400sc_msaa_1_01					
86	r400sc_msaa_4_01	00:00:16	49431	PASS	49431
\\fl_mkelly2\d\r400\regress\49431_020904090906\r400sc_msaa_4_01					
87	r400sc_msaa_6_01	00:00:16	49431	PASS	49431
\\fl_mkelly2\d\r400\regress\49431_020904090906\r400sc_msaa_6_01					
88	r400sc_msaa_8_01	00:00:16	49431	PASS	49431
\\fl_mkelly2\d\r400\regress\49431_020904090906\r400sc_msaa_8_01					
89	r400sc_msaa_8_aa_mask_01	00:00:16	49431	PASS	49431
\\fl_mkelly2\d\r400\regress\49431_020904090906\r400sc_msaa_8_aa_mask_01					
90	r400sc_msaa_8_aa_mask_02	00:00:36	49431	PASS	49431
\\fl_mkelly2\d\r400\regress\49431_020904090906\r400sc_msaa_8_aa_mask_02					
91	r400sc_msaa_8_aa_mask_fc_02	00:00:13	49431	PASS	49431
\\fl_mkelly2\d\r400\regress\49431_020904090906\r400sc_msaa_8_aa_mask_fc_02					
92	r400sc_null_triangles_01	00:00:16	49431	PASS	49431
\\fl_mkelly2\d\r400\regress\49431_020904090906\r400sc_null_triangles_01					
93	r400sc_null_triangles_fc_01	00:00:10	49431	PASS	49431
\\fl_mkelly2\d\r400\regress\49431_020904090906\r400sc_null_triangles_fc_01					

94	r400sc_point_jss_3x4_01	00:00:10	49431	PASS	49431
\\fl_mkelly2\d\r400\regress/49431_020904090906/r400sc_point_jss_3x4_01					
95	r400sc_point_list_01	00:00:38	49431	PASS	49431
\\fl_mkelly2\d\r400\regress/49431_020904090906/r400sc_point_list_01					
96	r400sc_point_list_02	00:00:15	49431	PASS	49431
\\fl_mkelly2\d\r400\regress/49431_020904090906/r400sc_point_list_02					
97	r400sc_point_list_03	00:00:11	49431	PASS	49431
\\fl_mkelly2\d\r400\regress/49431_020904090906/r400sc_point_list_03					
98	r400sc_point_list_04	00:00:36	49431	PASS	49431
\\fl_mkelly2\d\r400\regress/49431_020904090906/r400sc_point_list_04					
99	r400sc_point_list_05	00:00:13	49431	PASS	49431
\\fl_mkelly2\d\r400\regress/49431_020904090906/r400sc_point_list_05					
100	r400sc_point_list_07	00:00:10	49431	PASS	49431
\\fl_mkelly2\d\r400\regress/49431_020904090906/r400sc_point_list_07					
101	r400sc_point_list_08	00:00:10	49431	PASS	49431
\\fl_mkelly2\d\r400\regress/49431_020904090906/r400sc_point_list_08					
102	r400sc_point_list_09	00:00:10	49431	PASS	49431
\\fl_mkelly2\d\r400\regress/49431_020904090906/r400sc_point_list_09					
103	r400sc_point_msaa_8_01	00:00:21	49431	PASS	49431
\\fl_mkelly2\d\r400\regress/49431_020904090906/r400sc_point_msaa_8_01					
104	r400sc_poly_offset_01	00:00:10	49431	PASS	49431
\\fl_mkelly2\d\r400\regress/49431_020904090906/r400sc_poly_offset_01					
105	r400sc_poly_offset_02	00:00:21	49431	PASS	49431
\\fl_mkelly2\d\r400\regress/49431_020904090906/r400sc_poly_offset_02					
106	r400sc_poly_offset_fc_01	00:00:10	49431	PASS	49431
\\fl_mkelly2\d\r400\regress/49431_020904090906/r400sc_poly_offset_fc_01					
107	r400sc_polygon_stipple_01	00:00:19	49431	PASS	49431
\\fl_mkelly2\d\r400\regress/49431_020904090906/r400sc_polygon_stipple_01					
108	r400sc_prsp_byc_intrp_ref_pix_01	00:00:09	49431	PASS	49431
\\fl_mkelly2\d\r400\regress/49431_020904090906/r400sc_prsp_byc_intrp_ref_pix_01					
109	r400sc_prsp_byc_intrp_ref_pix_02	00:00:10	49431	PASS	49431
\\fl_mkelly2\d\r400\regress/49431_020904090906/r400sc_prsp_byc_intrp_ref_pix_02					

AMD1044\_0185692

110	r400sc_prsp_byc_intrp_ref_pix_03	00:00:10	49431	PASS	49431
\\fl_mkelly2\d\r400\regress\49431_020904090906\r400sc_prsp_byc_intrp_ref_pix_03					
111	r400sc_prsp_byc_intrp_ref_pix_04	00:00:10	49431	PASS	49431
\\fl_mkelly2\d\r400\regress\49431_020904090906\r400sc_prsp_byc_intrp_ref_pix_04					
112	r400sc_prsp_byc_intrp_ref_pix_05	00:00:10	49431	PASS	49431
\\fl_mkelly2\d\r400\regress\49431_020904090906\r400sc_prsp_byc_intrp_ref_pix_05					
113	r400sc_prsp_byc_intrp_ref_pix_06	00:00:10	49431	PASS	49431
\\fl_mkelly2\d\r400\regress\49431_020904090906\r400sc_prsp_byc_intrp_ref_pix_06					
114	r400sc_prsp_byc_intrp_ref_pix_07	00:00:10	49431	PASS	49431
\\fl_mkelly2\d\r400\regress\49431_020904090906\r400sc_prsp_byc_intrp_ref_pix_07					
115	r400sc_prsp_byc_intrp_ref_pix_08	00:00:10	49431	PASS	49431
\\fl_mkelly2\d\r400\regress\49431_020904090906\r400sc_prsp_byc_intrp_ref_pix_08					
116	r400sc_raster_fill_rule_01	00:00:10	49431	PASS	49431
\\fl_mkelly2\d\r400\regress\49431_020904090906\r400sc_raster_fill_rule_01					
117	r400sc_raster_fill_rule_02	00:01:06	49431	PASS	49431
\\fl_mkelly2\d\r400\regress\49431_020904090906\r400sc_raster_fill_rule_02					
118	r400sc_raster_fill_rule_03	00:00:54	49431	PASS	49431
\\fl_mkelly2\d\r400\regress\49431_020904090906\r400sc_raster_fill_rule_03					
119	r400sc_raster_fill_rule_04	00:00:27	49431	PASS	49431
\\fl_mkelly2\d\r400\regress\49431_020904090906\r400sc_raster_fill_rule_04					
120	r400sc_raster_fill_rule_05	00:00:30	49431	PASS	49431
\\fl_mkelly2\d\r400\regress\49431_020904090906\r400sc_raster_fill_rule_05					
121	r400sc_raster_fill_rule_fc_01	00:00:10	49431	PASS	49431
\\fl_mkelly2\d\r400\regress\49431_020904090906\r400sc_raster_fill_rule_fc_01					
122	r400sc_rectangle_list_01	00:00:10	49431	PASS	49431
\\fl_mkelly2\d\r400\regress\49431_020904090906\r400sc_rectangle_list_01					
123	r400sc_rectangle_list_02	00:00:09	49431	PASS	49431
\\fl_mkelly2\d\r400\regress\49431_020904090906\r400sc_rectangle_list_02					
124	r400sc_rectangle_list_03	00:00:10	49431	PASS	49431
\\fl_mkelly2\d\r400\regress\49431_020904090906\r400sc_rectangle_list_03					
125	r400sc_rectangle_list_04	00:00:09	49431	PASS	49431
\\fl_mkelly2\d\r400\regress\49431_020904090906\r400sc_rectangle_list_04					

126	r400sc_rectangle_list_05	00:00:22	49431	PASS	49431
\\fl_mkelly2\d\r400\regress\49431_020904090906\r400sc_rectangle_list_05					
127	r400sc_rectangle_list_06	00:00:10	49431	PASS	49431
\\fl_mkelly2\d\r400\regress\49431_020904090906\r400sc_rectangle_list_06					
128	r400sc_rectangle_list_07	00:00:10	49431	PASS	49431
\\fl_mkelly2\d\r400\regress\49431_020904090906\r400sc_rectangle_list_07					
129	r400sc_rectangle_list_08	00:00:10	49431	PASS	49431
\\fl_mkelly2\d\r400\regress\49431_020904090906\r400sc_rectangle_list_08					
130	r400sc_scissor_rect_01	00:00:17	49431	PASS	49431
\\fl_mkelly2\d\r400\regress\49431_020904090906\r400sc_scissor_rect_01					
131	r400sc_scissor_rect_02	00:00:12	49431	PASS	49431
\\fl_mkelly2\d\r400\regress\49431_020904090906\r400sc_scissor_rect_02					
132	r400sc_scissor_rect_03	00:00:19	49431	PASS	49431
\\fl_mkelly2\d\r400\regress\49431_020904090906\r400sc_scissor_rect_03					
133	r400sc_scissor_rect_04	00:00:31	49431	PASS	49431
\\fl_mkelly2\d\r400\regress\49431_020904090906\r400sc_scissor_rect_04					
134	r400sc_scissor_rect_05	00:00:21	49431	PASS	49431
\\fl_mkelly2\d\r400\regress\49431_020904090906\r400sc_scissor_rect_05					
135	r400sc_scissor_rect_fc_01	00:00:11	49431	PASS	49431
\\fl_mkelly2\d\r400\regress\49431_020904090906\r400sc_scissor_rect_fc_01					
136	r400sc_set_state_01	00:00:12	49431	PASS	49431
\\fl_mkelly2\d\r400\regress\49431_020904090906\r400sc_set_state_01					
137	r400sc_tri_16_par_64_dwords_01	00:00:29	49431	PASS	49431
\\fl_mkelly2\d\r400\regress\49431_020904090906\r400sc_tri_16_par_64_dwords_01					
138	r400sc_tri_8textures_01	00:00:10	49431	PASS	49431
\\fl_mkelly2\d\r400\regress\49431_020904090906\r400sc_tri_8textures_01					
139	r400sc_tri_8textures_02	00:00:30	49431	PASS	49431
\\fl_mkelly2\d\r400\regress\49431_020904090906\r400sc_tri_8textures_02					
140	r400sc_tri_walk_start_vertex_01	00:00:27	49431	PASS	49431
\\fl_mkelly2\d\r400\regress\49431_020904090906\r400sc_tri_walk_start_vertex_01					
141	r400sc_tri_walk_start_vertex_02	00:00:25	49431	PASS	49431
\\fl_mkelly2\d\r400\regress\49431_020904090906\r400sc_tri_walk_start_vertex_02					

142	r400sc_tri_walk_start_vertex_03	00:00:25	49431	PASS	49431
\\fl_mkelly2\d\r400\regress\49431_020904090906\r400sc_tri_walk_start_vertex_03					
143	r400sc_tri_walk_start_vertex_04	00:00:29	49431	PASS	49431
\\fl_mkelly2\d\r400\regress\49431_020904090906\r400sc_tri_walk_start_vertex_04					
144	r400sc_tri_walk_start_vertex_05	00:00:26	49431	PASS	49431
\\fl_mkelly2\d\r400\regress\49431_020904090906\r400sc_tri_walk_start_vertex_05					
145	r400sc_tri_walk_start_vertex_06	00:00:25	49431	PASS	49431
\\fl_mkelly2\d\r400\regress\49431_020904090906\r400sc_tri_walk_start_vertex_06					
146	r400sc_tri_walk_start_vertex_07	00:00:26	49431	PASS	49431
\\fl_mkelly2\d\r400\regress\49431_020904090906\r400sc_tri_walk_start_vertex_07					
147	r400sc_tri_walk_start_vertex_08	00:00:26	49431	PASS	49431
\\fl_mkelly2\d\r400\regress\49431_020904090906\r400sc_tri_walk_start_vertex_08					
148	r400sc_tri_walk_start_vertex_09	00:00:26	49431	PASS	49431
\\fl_mkelly2\d\r400\regress\49431_020904090906\r400sc_tri_walk_start_vertex_09					
149	r400sc_tri_walk_start_vertex_10	00:00:25	49431	PASS	49431
\\fl_mkelly2\d\r400\regress\49431_020904090906\r400sc_tri_walk_start_vertex_10					
150	r400sc_tri_walk_start_vertex_11	00:00:27	49431	PASS	49431
\\fl_mkelly2\d\r400\regress\49431_020904090906\r400sc_tri_walk_start_vertex_11					
151	r400sc_tri_walk_start_vertex_12	00:00:27	49431	PASS	49431
\\fl_mkelly2\d\r400\regress\49431_020904090906\r400sc_tri_walk_start_vertex_12					
152	r400sc_tri_walk_start_vertex_13	00:00:26	49431	PASS	49431
\\fl_mkelly2\d\r400\regress\49431_020904090906\r400sc_tri_walk_start_vertex_13					
153	r400sc_tri_walk_start_vertex_14	00:00:26	49431	PASS	49431
\\fl_mkelly2\d\r400\regress\49431_020904090906\r400sc_tri_walk_start_vertex_14					
154	r400sc_tri_walk_start_vertex_15	00:00:26	49431	PASS	49431
\\fl_mkelly2\d\r400\regress\49431_020904090906\r400sc_tri_walk_start_vertex_15					
155	r400sc_tri_walk_start_vertex_16	00:00:26	49431	PASS	49431
\\fl_mkelly2\d\r400\regress\49431_020904090906\r400sc_tri_walk_start_vertex_16					
156	r400sc_triangle_stipple_01	00:00:26	49431	FAIL	
compare mismatch **					
157	r400sc_window_offset_01	00:00:22	49431	PASS	49431
\\fl_mkelly2\d\r400\regress\49431_020904090906\r400sc_window_offset_01					
158	r400sc_window_offset_fc_01	00:00:10	49431	PASS	49431



```

\\fl_mkelly2\d\r400\regress/49431_020904090906/r400sc_window_offset_fc_01

159 r400sc_zbuffer_line_list_01                00:00:09 49431 PASS    49431
\\fl_mkelly2\d\r400\regress/49431_020904090906/r400sc_zbuffer_line_list_01

160 r400sc_zbuffer_point_list_01              00:00:09 49431 PASS    49431
\\fl_mkelly2\d\r400\regress/49431_020904090906/r400sc_zbuffer_point_list_01

161 r400sc_zbuffer_rectangle_list_01          00:00:10 49431 PASS    49431
\\fl_mkelly2\d\r400\regress/49431_020904090906/r400sc_zbuffer_rectangle_list_01

162 r400sc_zbuffer_rectangle_list_02          00:00:10 49431 PASS    49431
\\fl_mkelly2\d\r400\regress/49431_020904090906/r400sc_zbuffer_rectangle_list_02

163 r400sc_zbuffer_rectangle_list_fc_02       00:00:10 49431 PASS    49431
\\fl_mkelly2\d\r400\regress/49431_020904090906/r400sc_zbuffer_rectangle_list_fc_02

164 r400sc_zbuffer_triangle_list_01           00:00:10 49431 PASS    49431
\\fl_mkelly2\d\r400\regress/49431_020904090906/r400sc_zbuffer_triangle_list_01

165 r400cl_ucp_combos_30                      00:01:24 49431 PASS    49431
\\fl_mkelly2\d\r400\regress/49431_020904090906/r400cl_ucp_combos_30

166 r400cl_ucp_combos_29                      00:01:24 49431 PASS    49431
\\fl_mkelly2\d\r400\regress/49431_020904090906/r400cl_ucp_combos_29

167 r400cl_ucp_combos_28                      00:01:24 49431 PASS    49431
\\fl_mkelly2\d\r400\regress/49431_020904090906/r400cl_ucp_combos_28

168 r400cl_ucp_combos_27                      00:01:25 49431 PASS    49431
\\fl_mkelly2\d\r400\regress/49431_020904090906/r400cl_ucp_combos_27

169 r400cl_ucp_combos_26                      00:01:25 49431 PASS    49431
\\fl_mkelly2\d\r400\regress/49431_020904090906/r400cl_ucp_combos_26

170 r400cl_ucp_combos_25                      00:01:24 49431 PASS    49431
\\fl_mkelly2\d\r400\regress/49431_020904090906/r400cl_ucp_combos_25

171 r400cl_ucp_combos_24                      00:01:25 49431 PASS    49431
\\fl_mkelly2\d\r400\regress/49431_020904090906/r400cl_ucp_combos_24

172 r400cl_ucp_combos_23                      00:01:24 49431 PASS    49431
\\fl_mkelly2\d\r400\regress/49431_020904090906/r400cl_ucp_combos_23

173 r400cl_ucp_combos_22                      00:01:23 49431 PASS    49431
\\fl_mkelly2\d\r400\regress/49431_020904090906/r400cl_ucp_combos_22

174 r400cl_ucp_combos_21                      00:01:25 49431 PASS    49431

```

```

\\fl_mkelly2\d\r400\regress/49431_020904090906/r400cl_ucp_combos_21

175 r400cl_ucp_combos_20                00:01:24 49431 PASS    49431
\\fl_mkelly2\d\r400\regress/49431_020904090906/r400cl_ucp_combos_20

176 r400cl_ucp_combos_19                00:01:26 49431 PASS    49431
\\fl_mkelly2\d\r400\regress/49431_020904090906/r400cl_ucp_combos_19

177 r400cl_ucp_combos_18                00:01:25 49431 PASS    49431
\\fl_mkelly2\d\r400\regress/49431_020904090906/r400cl_ucp_combos_18

178 r400cl_ucp_combos_17                00:01:24 49431 PASS    49431
\\fl_mkelly2\d\r400\regress/49431_020904090906/r400cl_ucp_combos_17

179 r400cl_ucp_combos_16                00:01:36 49431 PASS    49431
\\fl_mkelly2\d\r400\regress/49431_020904090906/r400cl_ucp_combos_16

180 r400cl_ucp_combos_15                00:01:24 49431 PASS    49431
\\fl_mkelly2\d\r400\regress/49431_020904090906/r400cl_ucp_combos_15

181 r400cl_ucp_combos_14                00:01:24 49431 PASS    49431
\\fl_mkelly2\d\r400\regress/49431_020904090906/r400cl_ucp_combos_14

182 r400cl_ucp_combos_13                00:01:24 49431 PASS    49431
\\fl_mkelly2\d\r400\regress/49431_020904090906/r400cl_ucp_combos_13

183 r400cl_ucp_combos_12                00:01:25 49431 PASS    49431
\\fl_mkelly2\d\r400\regress/49431_020904090906/r400cl_ucp_combos_12

184 r400cl_ucp_combos_11                00:01:24 49431 PASS    49431
\\fl_mkelly2\d\r400\regress/49431_020904090906/r400cl_ucp_combos_11

185 r400cl_ucp_combos_10                00:01:26 49431 PASS    49431
\\fl_mkelly2\d\r400\regress/49431_020904090906/r400cl_ucp_combos_10

186 r400cl_ucp_combos_09                00:01:25 49431 PASS    49431
\\fl_mkelly2\d\r400\regress/49431_020904090906/r400cl_ucp_combos_09

187 r400cl_ucp_combos_08                00:01:25 49431 PASS    49431
\\fl_mkelly2\d\r400\regress/49431_020904090906/r400cl_ucp_combos_08

188 r400cl_ucp_combos_07                00:01:25 49431 PASS    49431
\\fl_mkelly2\d\r400\regress/49431_020904090906/r400cl_ucp_combos_07

189 r400cl_ucp_combos_06                00:01:24 49431 PASS    49431
\\fl_mkelly2\d\r400\regress/49431_020904090906/r400cl_ucp_combos_06

190 r400cl_ucp_combos_05                00:01:24 49431 PASS    49431

```

```

\\fl_mkelly2\d\r400\regress/49431_020904090906/r400cl_ucp_combos_05

191 r400cl_pointlist_vertex_state_ucp_01          00:00:14 49431 PASS    49431
\\fl_mkelly2\d\r400\regress/49431_020904090906/r400cl_pointlist_vertex_state_ucp_01

192 r400cl_ucp_pointlist_01                      00:00:26 49431 FAIL
compare mismatch No
193 r400cl_gband_tcl_01                          00:00:35 49431 PASS    49431
      \\fl_mkelly2\d\r400\regress/49431_020904090906/r400cl_gband_tcl_01

194 r400cl_clip_disable_01                       00:00:33 49431 PASS    49431
\\fl_mkelly2\d\r400\regress/49431_020904090906/r400cl_clip_disable_01

195 r400cl_vtx_kill_01                           00:00:10 49431 PASS    49431
      \\fl_mkelly2\d\r400\regress/49431_020904090906/r400cl_vtx_kill_01

196 r400cl_vtx_kill_02                           00:00:10 49431 PASS    49431
      \\fl_mkelly2\d\r400\regress/49431_020904090906/r400cl_vtx_kill_02

197 r400cl_edgeflags_gband_01                   00:00:28 49431 PASS    49431
\\fl_mkelly2\d\r400\regress/49431_020904090906/r400cl_edgeflags_gband_01

198 r400cl_edgeflags_gband_left_01              00:00:29 49431 PASS    49431
\\fl_mkelly2\d\r400\regress/49431_020904090906/r400cl_edgeflags_gband_left_01

199 r400cl_edgeflags_gband_right_01             00:00:28 49431 PASS    49431
\\fl_mkelly2\d\r400\regress/49431_020904090906/r400cl_edgeflags_gband_right_01

200 r400cl_edgeflags_gband_bottom_01            00:00:29 49431 PASS    49431
\\fl_mkelly2\d\r400\regress/49431_020904090906/r400cl_edgeflags_gband_bottom_01

201 r400cl_edgeflags_gband_top_01               00:00:29 49431 PASS    49431
\\fl_mkelly2\d\r400\regress/49431_020904090906/r400cl_edgeflags_gband_top_01

202 r400cl_edgeflags_frustum_bottom_01          00:00:13 49431 PASS    49431
\\fl_mkelly2\d\r400\regress/49431_020904090906/r400cl_edgeflags_frustum_bottom_01

203 r400cl_edgeflags_frustum_top_01             00:00:13 49431 PASS    49431
\\fl_mkelly2\d\r400\regress/49431_020904090906/r400cl_edgeflags_frustum_top_01

204 r400cl_edgeflags_frustum_right_01           00:00:12 49431 PASS    49431
\\fl_mkelly2\d\r400\regress/49431_020904090906/r400cl_edgeflags_frustum_right_01

205 r400cl_edgeflags_frustum_left_01            00:00:13 49431 PASS    49431
\\fl_mkelly2\d\r400\regress/49431_020904090906/r400cl_edgeflags_frustum_left_01

206 r400cl_edgeflags_frustum_near_01            00:00:13 49431 PASS    49431
\\fl_mkelly2\d\r400\regress/49431_020904090906/r400cl_edgeflags_frustum_near_01

```

207	r400cl_edgeflags_frustum_far_01	00:00:12	49431	PASS	49431
\\fl_mkelly2\d\r400\regress\49431_020904090906\r400cl_edgeflags_frustum_far_01					
208	r400cl_edgeflags_01	00:00:12	49431	PASS	49431
\\fl_mkelly2\d\r400\regress\49431_020904090906\r400cl_edgeflags_01					
209	r400cl_frustum_lines_02	00:00:23	49431	PASS	49431
\\fl_mkelly2\d\r400\regress\49431_020904090906\r400cl_frustum_lines_02					
210	r400cl_frustum_lines_03	00:00:24	49431	PASS	49431
\\fl_mkelly2\d\r400\regress\49431_020904090906\r400cl_frustum_lines_03					
211	r400cl_frustum_lines_04	00:00:28	49431	PASS	49431
\\fl_mkelly2\d\r400\regress\49431_020904090906\r400cl_frustum_lines_04					
212	r400cl_frustum_lines_05	00:00:20	49431	PASS	49431
\\fl_mkelly2\d\r400\regress\49431_020904090906\r400cl_frustum_lines_05					
213	r400cl_frustum_lines_06	00:00:24	49431	PASS	49431
\\fl_mkelly2\d\r400\regress\49431_020904090906\r400cl_frustum_lines_06					
214	r400cl_frustum_lines_07	00:00:24	49431	PASS	49431
\\fl_mkelly2\d\r400\regress\49431_020904090906\r400cl_frustum_lines_07					
215	r400cl_frustum_lines_08	00:00:32	49431	PASS	49431
\\fl_mkelly2\d\r400\regress\49431_020904090906\r400cl_frustum_lines_08					
216	r400cl_frustum_lines_09	00:00:19	49431	PASS	49431
\\fl_mkelly2\d\r400\regress\49431_020904090906\r400cl_frustum_lines_09					
217	r400cl_frustum_lines_10	00:00:22	49431	PASS	49431
\\fl_mkelly2\d\r400\regress\49431_020904090906\r400cl_frustum_lines_10					
218	r400cl_frustum_lines_11	00:00:22	49431	PASS	49431
\\fl_mkelly2\d\r400\regress\49431_020904090906\r400cl_frustum_lines_11					
219	r400cl_frustum_lines_12	00:00:25	49431	PASS	49431
\\fl_mkelly2\d\r400\regress\49431_020904090906\r400cl_frustum_lines_12					
220	r400cl_frustum_lines_13	00:00:20	49431	PASS	49431
\\fl_mkelly2\d\r400\regress\49431_020904090906\r400cl_frustum_lines_13					
221	r400cl_frustum_lines_14	00:00:22	49431	PASS	49431
\\fl_mkelly2\d\r400\regress\49431_020904090906\r400cl_frustum_lines_14					
222	r400cl_frustum_lines_15	00:00:23	49431	PASS	49431
\\fl_mkelly2\d\r400\regress\49431_020904090906\r400cl_frustum_lines_15					

AMD1044\_0185699

223	r400cl_frustum_lines_16	00:00:26	49431	PASS	49431
\\fl_mkelly2\d\r400\regress/49431_020904090906/r400cl_frustum_lines_16					
224	r400cl_frustum_lines_17	00:00:20	49431	PASS	49431
\\fl_mkelly2\d\r400\regress/49431_020904090906/r400cl_frustum_lines_17					
225	r400cl_frustum_lines_18	00:00:23	49431	PASS	49431
\\fl_mkelly2\d\r400\regress/49431_020904090906/r400cl_frustum_lines_18					
226	r400cl_frustum_lines_19	00:00:24	49431	PASS	49431
\\fl_mkelly2\d\r400\regress/49431_020904090906/r400cl_frustum_lines_19					
227	r400cl_frustum_lines_20	00:00:26	49431	PASS	49431
\\fl_mkelly2\d\r400\regress/49431_020904090906/r400cl_frustum_lines_20					
228	r400cl_frustum_lines_21	00:00:20	49431	PASS	49431
\\fl_mkelly2\d\r400\regress/49431_020904090906/r400cl_frustum_lines_21					
229	r400cl_frustum_lines_22	00:00:23	49431	PASS	49431
\\fl_mkelly2\d\r400\regress/49431_020904090906/r400cl_frustum_lines_22					
230	r400cl_frustum_lines_23	00:00:22	49431	PASS	49431
\\fl_mkelly2\d\r400\regress/49431_020904090906/r400cl_frustum_lines_23					
231	r400cl_frustum_lines_24	00:00:26	49431	PASS	49431
\\fl_mkelly2\d\r400\regress/49431_020904090906/r400cl_frustum_lines_24					
232	r400cl_frustum_17	00:00:33	49431	PASS	49431
\\fl_mkelly2\d\r400\regress/49431_020904090906/r400cl_frustum_17					
233	r400cl_frustum_18	00:00:41	49431	PASS	49431
\\fl_mkelly2\d\r400\regress/49431_020904090906/r400cl_frustum_18					
234	r400cl_frustum_19	00:00:51	49431	PASS	49431
\\fl_mkelly2\d\r400\regress/49431_020904090906/r400cl_frustum_19					
235	r400cl_frustum_20	00:00:44	49431	PASS	49431
\\fl_mkelly2\d\r400\regress/49431_020904090906/r400cl_frustum_20					
236	r400cl_frustum_21	00:00:32	49431	PASS	49431
\\fl_mkelly2\d\r400\regress/49431_020904090906/r400cl_frustum_21					
237	r400cl_frustum_22	00:00:41	49431	PASS	49431
\\fl_mkelly2\d\r400\regress/49431_020904090906/r400cl_frustum_22					
238	r400cl_frustum_23	00:00:38	49431	PASS	49431
\\fl_mkelly2\d\r400\regress/49431_020904090906/r400cl_frustum_23					

AMD1044\_0185700

239	r400cl_frustum_24	00:00:44	49431	PASS	49431
	\\fl_mkelly2\d\r400\regress/49431_020904090906/r400cl_frustum_24				
240	r400cl_frustum_25	00:00:28	49431	PASS	49431
	\\fl_mkelly2\d\r400\regress/49431_020904090906/r400cl_frustum_25				
241	r400cl_frustum_26	00:00:40	49431	PASS	49431
	\\fl_mkelly2\d\r400\regress/49431_020904090906/r400cl_frustum_26				
242	r400cl_frustum_27	00:00:40	49431	PASS	49431
	\\fl_mkelly2\d\r400\regress/49431_020904090906/r400cl_frustum_27				
243	r400cl_frustum_28	00:00:50	49431	PASS	49431
	\\fl_mkelly2\d\r400\regress/49431_020904090906/r400cl_frustum_28				
244	r400cl_frustum_16	00:00:44	49431	PASS	49431
	\\fl_mkelly2\d\r400\regress/49431_020904090906/r400cl_frustum_16				
245	r400cl_frustum_15	00:00:39	49431	PASS	49431
	\\fl_mkelly2\d\r400\regress/49431_020904090906/r400cl_frustum_15				
246	r400cl_frustum_14	00:00:41	49431	PASS	49431
	\\fl_mkelly2\d\r400\regress/49431_020904090906/r400cl_frustum_14				
247	r400cl_frustum_13	00:00:33	49431	PASS	49431
	\\fl_mkelly2\d\r400\regress/49431_020904090906/r400cl_frustum_13				
248	r400cl_frustum_12	00:00:47	49431	PASS	49431
	\\fl_mkelly2\d\r400\regress/49431_020904090906/r400cl_frustum_12				
249	r400cl_frustum_11	00:00:39	49431	PASS	49431
	\\fl_mkelly2\d\r400\regress/49431_020904090906/r400cl_frustum_11				
250	r400cl_frustum_10	00:00:42	49431	PASS	49431
	\\fl_mkelly2\d\r400\regress/49431_020904090906/r400cl_frustum_10				
251	r400cl_frustum_09	00:00:30	49431	PASS	49431
	\\fl_mkelly2\d\r400\regress/49431_020904090906/r400cl_frustum_09				
252	r400cl_clip_10_verts_01	00:00:12	49431	PASS	49431
	\\fl_mkelly2\d\r400\regress/49431_020904090906/r400cl_clip_10_verts_01				
253	r400cl_vertex_reuse_clip_01	00:01:08	49431	PASS	49431
	\\fl_mkelly2\d\r400\regress/49431_020904090906/r400cl_vertex_reuse_clip_01				
254	r400cl_cull_only_ena_01	00:00:18	49431	PASS	49431
	\\fl_mkelly2\d\r400\regress/49431_020904090906/r400cl_cull_only_ena_01				

AMD1044\_0185701

255	r400cl_clip_ucp_6bits_01	00:00:18	49431	PASS	49431
	\\fl_mkelly2\d\r400\regress/49431_020904090906/r400cl_clip_ucp_6bits_01				
256	r400cl_clip_space_dx_ogl_01	00:00:11	49431	PASS	49431
	\\fl_mkelly2\d\r400\regress/49431_020904090906/r400cl_clip_space_dx_ogl_01				
257	r400cl_frustum_01	00:00:30	49431	PASS	49431
	\\fl_mkelly2\d\r400\regress/49431_020904090906/r400cl_frustum_01				
258	r400cl_frustum_02	00:00:40	49431	PASS	49431
	\\fl_mkelly2\d\r400\regress/49431_020904090906/r400cl_frustum_02				
259	r400cl_frustum_03	00:00:40	49431	PASS	49431
	\\fl_mkelly2\d\r400\regress/49431_020904090906/r400cl_frustum_03				
260	r400cl_frustum_04	00:00:46	49431	PASS	49431
	\\fl_mkelly2\d\r400\regress/49431_020904090906/r400cl_frustum_04				
261	r400cl_frustum_05	00:00:41	49431	PASS	49431
	\\fl_mkelly2\d\r400\regress/49431_020904090906/r400cl_frustum_05				
262	r400cl_frustum_06	00:00:41	49431	PASS	49431
	\\fl_mkelly2\d\r400\regress/49431_020904090906/r400cl_frustum_06				
263	r400cl_frustum_07	00:00:42	49431	PASS	49431
	\\fl_mkelly2\d\r400\regress/49431_020904090906/r400cl_frustum_07				
264	r400cl_frustum_08	00:01:00	49431	PASS	49431
	\\fl_mkelly2\d\r400\regress/49431_020904090906/r400cl_frustum_08				
265	r400cl_frustum_lines_01	00:00:21	49431	PASS	49431
	\\fl_mkelly2\d\r400\regress/49431_020904090906/r400cl_frustum_lines_01				
266	r400cl_gband_04	00:00:10	49431	PASS	49431
	\\fl_mkelly2\d\r400\regress/49431_020904090906/r400cl_gband_04				
267	r400cl_simple_triangle_01	00:00:10	49431	PASS	49431
	\\fl_mkelly2\d\r400\regress/49431_020904090906/r400cl_simple_triangle_01				
268	r400cl_ucp_combos_01	00:01:24	49431	PASS	49431
	\\fl_mkelly2\d\r400\regress/49431_020904090906/r400cl_ucp_combos_01				
269	r400cl_ucp_combos_02	00:01:25	49431	PASS	49431
	\\fl_mkelly2\d\r400\regress/49431_020904090906/r400cl_ucp_combos_02				
270	r400cl_ucp_combos_03	00:01:25	49431	PASS	49431
	\\fl_mkelly2\d\r400\regress/49431_020904090906/r400cl_ucp_combos_03				

AMD1044\_0185702

271	r400cl_ucp_combos_04	00:01:23	49431	PASS	49431
\\fl_mkelly2\d\r400\regress/49431_020904090906/r400cl_ucp_combos_04					
272	r400cl_w_eq_0	00:00:23	49431	PASS	49431
\\fl_mkelly2\d\r400\regress/49431_020904090906/r400cl_w_eq_0					
273	r400vgt_auto_index_line_list_01	00:00:13	49431	PASS	49431
\\fl_mkelly2\d\r400\regress/49431_020904090906/r400vgt_auto_index_line_list_01					
274	r400vgt_auto_index_line_loop_01	00:00:13	49431	PASS	49431
\\fl_mkelly2\d\r400\regress/49431_020904090906/r400vgt_auto_index_line_loop_01					
275	r400vgt_auto_index_line_strip_01	00:00:13	49431	PASS	49431
\\fl_mkelly2\d\r400\regress/49431_020904090906/r400vgt_auto_index_line_strip_01					
276	r400vgt_auto_index_points_01	00:00:12	49431	PASS	49431
\\fl_mkelly2\d\r400\regress/49431_020904090906/r400vgt_auto_index_points_01					
277	r400vgt_auto_index_polygon_01	00:00:15	49431	PASS	49431
\\fl_mkelly2\d\r400\regress/49431_020904090906/r400vgt_auto_index_polygon_01					
278	r400vgt_auto_index_primitives_01	00:00:11	49431	PASS	49431
\\fl_mkelly2\d\r400\regress/49431_020904090906/r400vgt_auto_index_primitives_01					
279	r400vgt_auto_index_quad_list_01	00:00:13	49431	PASS	49431
\\fl_mkelly2\d\r400\regress/49431_020904090906/r400vgt_auto_index_quad_list_01					
280	r400vgt_auto_index_quad_strip_01	00:00:14	49431	PASS	49431
\\fl_mkelly2\d\r400\regress/49431_020904090906/r400vgt_auto_index_quad_strip_01					
281	r400vgt_auto_index_rectangle_list_01	00:00:16	49431	PASS	49431
\\fl_mkelly2\d\r400\regress/49431_020904090906/r400vgt_auto_index_rectangle_list_01					
282	r400vgt_auto_index_tri_fan_01	00:00:13	49431	PASS	49431
\\fl_mkelly2\d\r400\regress/49431_020904090906/r400vgt_auto_index_tri_fan_01					
283	r400vgt_auto_index_tri_list_01	00:00:12	49431	PASS	49431
\\fl_mkelly2\d\r400\regress/49431_020904090906/r400vgt_auto_index_tri_list_01					
284	r400vgt_auto_index_tri_strip_01	00:00:15	49431	PASS	49431
\\fl_mkelly2\d\r400\regress/49431_020904090906/r400vgt_auto_index_tri_strip_01					
285	r400vgt_auto_index_tri_wflags_01	00:00:13	49431	PASS	49431
\\fl_mkelly2\d\r400\regress/49431_020904090906/r400vgt_auto_index_tri_wflags_01					
286	r400vgt_dma_engine_01	00:00:30	49431	PASS	49431
\\fl_mkelly2\d\r400\regress/49431_020904090906/r400vgt_dma_engine_01					

AMD1044\_0185703



287	r400vgt_dma_engine_02	00:00:16	49431	PASS	49431
\\fl_mkelly2\d\r400\regress/49431_020904090906/r400vgt_dma_engine_02					
288	r400vgt_dma_engine_03	00:00:15	49431	PASS	49431
\\fl_mkelly2\d\r400\regress/49431_020904090906/r400vgt_dma_engine_03					
289	r400vgt_dma_engine_04	00:00:16	49431	PASS	49431
\\fl_mkelly2\d\r400\regress/49431_020904090906/r400vgt_dma_engine_04					
290	r400vgt_dma_engine_05	00:00:16	49431	PASS	49431
\\fl_mkelly2\d\r400\regress/49431_020904090906/r400vgt_dma_engine_05					
291	r400vgt_dma_engine_06	00:00:12	49431	PASS	49431
\\fl_mkelly2\d\r400\regress/49431_020904090906/r400vgt_dma_engine_06					
292	r400vgt_dma_engine_07	00:00:12	49431	PASS	49431
\\fl_mkelly2\d\r400\regress/49431_020904090906/r400vgt_dma_engine_07					
293	r400vgt_dma_engine_08	00:00:18	49431	PASS	49431
\\fl_mkelly2\d\r400\regress/49431_020904090906/r400vgt_dma_engine_08					
294	r400vgt_dma_engine_09	00:00:19	49431	PASS	49431
\\fl_mkelly2\d\r400\regress/49431_020904090906/r400vgt_dma_engine_09					
295	r400vgt_dma_engine_10	00:00:16	49431	PASS	49431
\\fl_mkelly2\d\r400\regress/49431_020904090906/r400vgt_dma_engine_10					
296	r400vgt_dma_index_line_list_01	00:00:11	49431	PASS	49431
\\fl_mkelly2\d\r400\regress/49431_020904090906/r400vgt_dma_index_line_list_01					
297	r400vgt_dma_index_line_loop_01	00:00:11	49431	PASS	49431
\\fl_mkelly2\d\r400\regress/49431_020904090906/r400vgt_dma_index_line_loop_01					
298	r400vgt_dma_index_line_strip_01	00:00:12	49431	PASS	49431
\\fl_mkelly2\d\r400\regress/49431_020904090906/r400vgt_dma_index_line_strip_01					
299	r400vgt_dma_index_points_01	00:00:11	49431	PASS	49431
\\fl_mkelly2\d\r400\regress/49431_020904090906/r400vgt_dma_index_points_01					
300	r400vgt_dma_index_polygon_01	00:00:14	49431	PASS	49431
\\fl_mkelly2\d\r400\regress/49431_020904090906/r400vgt_dma_index_polygon_01					
301	r400vgt_dma_index_primitives_01	00:00:11	49431	PASS	49431
\\fl_mkelly2\d\r400\regress/49431_020904090906/r400vgt_dma_index_primitives_01					
302	r400vgt_dma_index_quad_list_01	00:00:13	49431	PASS	49431
\\fl_mkelly2\d\r400\regress/49431_020904090906/r400vgt_dma_index_quad_list_01					

303	r400vgt_dma_index_quad_strip_01	00:00:15	49431	PASS	49431
\\fl_mkelly2\d\r400\regress\49431_020904090906\r400vgt_dma_index_quad_strip_01					
304	r400vgt_dma_index_rectangle_list_01	00:00:13	49431	PASS	49431
\\fl_mkelly2\d\r400\regress\49431_020904090906\r400vgt_dma_index_rectangle_list_01					
305	r400vgt_dma_index_tri_fan_01	00:00:14	49431	PASS	49431
\\fl_mkelly2\d\r400\regress\49431_020904090906\r400vgt_dma_index_tri_fan_01					
306	r400vgt_dma_index_tri_list_01	00:00:12	49431	PASS	49431
\\fl_mkelly2\d\r400\regress\49431_020904090906\r400vgt_dma_index_tri_list_01					
307	r400vgt_dma_index_tri_strip_01	00:00:14	49431	PASS	49431
\\fl_mkelly2\d\r400\regress\49431_020904090906\r400vgt_dma_index_tri_strip_01					
308	r400vgt_dma_index_tri_wflags_01	00:00:12	49431	PASS	49431
\\fl_mkelly2\d\r400\regress\49431_020904090906\r400vgt_dma_index_tri_wflags_01					
309	r400vgt_dma_swap_indx16_01	00:00:13	49431	PASS	49431
\\fl_mkelly2\d\r400\regress\49431_020904090906\r400vgt_dma_swap_indx16_01					
310	r400vgt_dma_swap_indx32_01	00:00:26	49431	PASS	49431
\\fl_mkelly2\d\r400\regress\49431_020904090906\r400vgt_dma_swap_indx32_01					
311	r400vgt_edgeflags_polygon_01	00:00:11	49431	PASS	49431
\\fl_mkelly2\d\r400\regress\49431_020904090906\r400vgt_edgeflags_polygon_01					
312	r400vgt_edgeflags_quad_list_01	00:00:10	49431	PASS	49431
\\fl_mkelly2\d\r400\regress\49431_020904090906\r400vgt_edgeflags_quad_list_01					
313	r400vgt_edgeflags_quad_strip_01	00:00:10	49431	PASS	49431
\\fl_mkelly2\d\r400\regress\49431_020904090906\r400vgt_edgeflags_quad_strip_01					
314	r400vgt_edgeflags_triangle_fan_01	00:00:11	49431	PASS	49431
\\fl_mkelly2\d\r400\regress\49431_020904090906\r400vgt_edgeflags_triangle_fan_01					
315	r400vgt_edgeflags_triangle_list_01	00:00:10	49431	PASS	49431
\\fl_mkelly2\d\r400\regress\49431_020904090906\r400vgt_edgeflags_triangle_list_01					
316	r400vgt_edgeflags_triangle_strip_01	00:00:11	49431	PASS	49431
\\fl_mkelly2\d\r400\regress\49431_020904090906\r400vgt_edgeflags_triangle_strip_01					
317	r400vgt_edgeflags_triangle_wflags_01	00:00:10	49431	PASS	49431
\\fl_mkelly2\d\r400\regress\49431_020904090906\r400vgt_edgeflags_triangle_wflags_01					
318	r400vgt_ext2int_index_line_list_01	00:00:10	49431	PASS	49431
\\fl_mkelly2\d\r400\regress\49431_020904090906\r400vgt_ext2int_index_line_list_01					

AMD1044\_0185705

319	r400vgt_ext2int_index_line_loop_01	00:00:12	49431	PASS	49431
\\fl_mkelly2\d\r400\regress\49431_020904090906\r400vgt_ext2int_index_line_loop_01					
320	r400vgt_ext2int_index_line_strip_01	00:00:12	49431	PASS	49431
\\fl_mkelly2\d\r400\regress\49431_020904090906\r400vgt_ext2int_index_line_strip_01					
321	r400vgt_ext2int_index_points_01	00:00:11	49431	PASS	49431
\\fl_mkelly2\d\r400\regress\49431_020904090906\r400vgt_ext2int_index_points_01					
322	r400vgt_ext2int_index_polygon_01	00:00:15	49431	PASS	49431
\\fl_mkelly2\d\r400\regress\49431_020904090906\r400vgt_ext2int_index_polygon_01					
323	r400vgt_ext2int_index_quad_list_01	00:00:11	49431	PASS	49431
\\fl_mkelly2\d\r400\regress\49431_020904090906\r400vgt_ext2int_index_quad_list_01					
324	r400vgt_ext2int_index_quad_strip_01	00:00:12	49431	PASS	49431
\\fl_mkelly2\d\r400\regress\49431_020904090906\r400vgt_ext2int_index_quad_strip_01					
325	r400vgt_ext2int_index_triangle_fan_01	00:00:16	49431	PASS	49431
\\fl_mkelly2\d\r400\regress\49431_020904090906\r400vgt_ext2int_index_triangle_fan_01					
326	r400vgt_ext2int_index_triangle_list_01	00:00:19	49431	PASS	49431
\\fl_mkelly2\d\r400\regress\49431_020904090906\r400vgt_ext2int_index_triangle_list_01					
327	r400vgt_ext2int_index_triangle_strip_01	00:00:12	49431	PASS	49431
\\fl_mkelly2\d\r400\regress\49431_020904090906\r400vgt_ext2int_index_triangle_strip_01					
328	r400vgt_hos_auto_index_line_list_01	00:00:26	49431	PASS	49431
\\fl_mkelly2\d\r400\regress\49431_020904090906\r400vgt_hos_auto_index_line_list_01					
329	r400vgt_hos_auto_index_quad_list_01	00:04:30	49431	PASS	49431
\\fl_mkelly2\d\r400\regress\49431_020904090906\r400vgt_hos_auto_index_quad_list_01					
330	r400vgt_hos_auto_index_triangle_list_01	00:03:29	49431	PASS	49431
\\fl_mkelly2\d\r400\regress\49431_020904090906\r400vgt_hos_auto_index_triangle_list_01					
331	r400vgt_hos_cubic_pos_pnt_discrete_01	00:00:51	49431	PASS	49431
\\fl_mkelly2\d\r400\regress\49431_020904090906\r400vgt_hos_cubic_pos_pnt_discrete_01					
332	r400vgt_hos_PNL_cp_ln_cont_no_projection_01	00:00:33	49431	PASS	49431
\\fl_mkelly2\d\r400\regress\49431_020904090906\r400vgt_hos_PNL_cp_ln_cont_no_projection_01					
333	r400vgt_hos_PNL_lp_ln_cont_no_projection_01	00:00:20	49431	PASS	49431
\\fl_mkelly2\d\r400\regress\49431_020904090906\r400vgt_hos_PNL_lp_ln_cont_no_projection_01					
334	r400vgt_hos_PNQ_cp_qn_cont_light_texture_01	00:03:25	49431	PASS	49431
\\fl_mkelly2\d\r400\regress\49431_020904090906\r400vgt_hos_PNQ_cp_qn_cont_light_texture					

AMD1044\_0185706

```

_01
  335 r400vgt_hos_PNQ_cp_qn_cont_light_texture_02      00:03:30 49431 PASS    49431
\\fl_mkelly2\d\r400\regress/49431_020904090906/r400vgt_hos_PNQ_cp_qn_cont_light_texture
_02
  336 r400vgt_hos_PNQ_cp_qn_cont_no_projection_01      00:01:09 49431 PASS    49431
\\fl_mkelly2\d\r400\regress/49431_020904090906/r400vgt_hos_PNQ_cp_qn_cont_no_projection
_01
  337 r400vgt_hos_PNQ_lp_cont_no_projection_01        00:01:46 49431 PASS    49431
\\fl_mkelly2\d\r400\regress/49431_020904090906/r400vgt_hos_PNQ_lp_cont_no_projection_01

  338 r400vgt_hos_PNT_cp_qn_cont_light_texture_01     00:01:22 49431 PASS    49431
\\fl_mkelly2\d\r400\regress/49431_020904090906/r400vgt_hos_PNT_cp_qn_cont_light_texture
_01
  339 r400vgt_hos_PNT_cp_qn_cont_light_texture_02     00:01:25 49431 PASS    49431
\\fl_mkelly2\d\r400\regress/49431_020904090906/r400vgt_hos_PNT_cp_qn_cont_light_texture
_02
  340 r400vgt_hos_PNT_cp_qn_cont_light_texture_03     00:01:26 49431 PASS    49431
\\fl_mkelly2\d\r400\regress/49431_020904090906/r400vgt_hos_PNT_cp_qn_cont_light_texture
_03
  341 r400vgt_hos_PNT_cp_qn_cont_moving_normals_01    00:02:37 49431 PASS    49431
\\fl_mkelly2\d\r400\regress/49431_020904090906/r400vgt_hos_PNT_cp_qn_cont_moving_normal
s_01
  342 r400vgt_hos_PNT_cp_qn_cont_no_projection_01     00:00:43 49431 PASS    49431
\\fl_mkelly2\d\r400\regress/49431_020904090906/r400vgt_hos_PNT_cp_qn_cont_no_projection
_01
  343 r400vgt_hos_PNT_cp_qn_disc_14_04_lit_tex_proj_01 00:00:20 49431 PASS    49431
\\fl_mkelly2\d\r400\regress/49431_020904090906/r400vgt_hos_PNT_cp_qn_disc_14_04_lit_tex
_proj_01
  344 r400vgt_hos_PNT_disc_cp_qn_light_texture_01    00:00:37 49431 PASS    49431
\\fl_mkelly2\d\r400\regress/49431_020904090906/r400vgt_hos_PNT_disc_cp_qn_light_texture
_01
  345 r400vgt_hos_PNT_disc_cp_qn_no_projection_01     00:00:23 49431 PASS    49431
\\fl_mkelly2\d\r400\regress/49431_020904090906/r400vgt_hos_PNT_disc_cp_qn_no_projection
_01
  346 r400vgt_hos_PNT_disc_cp_qn_precision_01         00:00:23 49431 PASS    49431
\\fl_mkelly2\d\r400\regress/49431_020904090906/r400vgt_hos_PNT_disc_cp_qn_precision_01

  347 r400vgt_hos_PNT_cont_cp_qn_precision_01        00:00:45 49431 PASS    49431
\\fl_mkelly2\d\r400\regress/49431_020904090906/r400vgt_hos_PNT_cont_cp_qn_precision_01

  348 r400vgt_hos_PNT_disc_cp_qn_precision_02        00:00:52 49431 PASS    49431
\\fl_mkelly2\d\r400\regress/49431_020904090906/r400vgt_hos_PNT_disc_cp_qn_precision_02

  349 r400vgt_hos_PNT_cont_cp_qn_precision_02        00:01:12 49431 PASS    49431
\\fl_mkelly2\d\r400\regress/49431_020904090906/r400vgt_hos_PNT_cont_cp_qn_precision_02

  350 r400vgt_hos_PNT_lp_cont_no_projection_01       00:01:10 49431 PASS    49431
\\fl_mkelly2\d\r400\regress/49431_020904090906/r400vgt_hos_PNT_lp_cont_no_projection_01

```

351	r400vgt_hos_PNT_disc_cp_qn_complex_01	00:03:19	49431	PASS	49431
\\fl_mkelly2\d\r400\regress\49431_020904090906\r400vgt_hos_PNT_disc_cp_qn_complex_01					
352	r400vgt_hos_PNT_cont_cp_qn_complex_01	00:04:15	49431	PASS	49431
\\fl_mkelly2\d\r400\regress\49431_020904090906\r400vgt_hos_PNT_cont_cp_qn_complex_01					
353	r400vgt_hos_PNT_edge_detection_01	00:02:00	49431	PASS	49431
\\fl_mkelly2\d\r400\regress\49431_020904090906\r400vgt_hos_PNT_edge_detection_01					
354	r400vgt_hos_RPatch_cp_02	00:03:35	49431	PASS	49431
\\fl_mkelly2\d\r400\regress\49431_020904090906\r400vgt_hos_RPatch_cp_02					
355	r400vgt_hos_RPatch_lp_02	00:03:10	49431	PASS	49431
\\fl_mkelly2\d\r400\regress\49431_020904090906\r400vgt_hos_RPatch_lp_02					
356	r400vgt_hos_simple_linear_PNT_discrete_01	00:00:11	49431	PASS	49431
\\fl_mkelly2\d\r400\regress\49431_020904090906\r400vgt_hos_simple_linear_PNT_discrete_01					
357	r400vgt_immed_index_line_list_01	00:00:12	49431	PASS	49431
\\fl_mkelly2\d\r400\regress\49431_020904090906\r400vgt_immed_index_line_list_01					
358	r400vgt_immed_index_line_loop_01	00:00:12	49431	PASS	49431
\\fl_mkelly2\d\r400\regress\49431_020904090906\r400vgt_immed_index_line_loop_01					
359	r400vgt_immed_index_line_strip_01	00:00:12	49431	PASS	49431
\\fl_mkelly2\d\r400\regress\49431_020904090906\r400vgt_immed_index_line_strip_01					
360	r400vgt_immed_index_points_01	00:00:12	49431	PASS	49431
\\fl_mkelly2\d\r400\regress\49431_020904090906\r400vgt_immed_index_points_01					
361	r400vgt_immed_index_polygon_01	00:00:15	49431	PASS	49431
\\fl_mkelly2\d\r400\regress\49431_020904090906\r400vgt_immed_index_polygon_01					
362	r400vgt_immed_index_primitives_01	00:00:11	49431	PASS	49431
\\fl_mkelly2\d\r400\regress\49431_020904090906\r400vgt_immed_index_primitives_01					
363	r400vgt_immed_index_quad_list_01	00:00:13	49431	PASS	49431
\\fl_mkelly2\d\r400\regress\49431_020904090906\r400vgt_immed_index_quad_list_01					
364	r400vgt_immed_index_quad_strip_01	00:00:16	49431	PASS	49431
\\fl_mkelly2\d\r400\regress\49431_020904090906\r400vgt_immed_index_quad_strip_01					
365	r400vgt_immed_index_rectangle_list_01	00:00:13	49431	PASS	49431
\\fl_mkelly2\d\r400\regress\49431_020904090906\r400vgt_immed_index_rectangle_list_01					
366	r400vgt_immed_index_tri_fan_01	00:00:15	49431	PASS	49431
\\fl_mkelly2\d\r400\regress\49431_020904090906\r400vgt_immed_index_tri_fan_01					

367	r400vgt_immed_index_tri_list_01	00:00:13	49431	PASS	49431
\\fl_mkelly2\d\r400\regress/49431_020904090906/r400vgt_immed_index_tri_list_01					
368	r400vgt_immed_index_tri_strip_01	00:00:15	49431	PASS	49431
\\fl_mkelly2\d\r400\regress/49431_020904090906/r400vgt_immed_index_tri_strip_01					
369	r400vgt_immed_index_tri_wflags_01	00:00:12	49431	PASS	49431
\\fl_mkelly2\d\r400\regress/49431_020904090906/r400vgt_immed_index_tri_wflags_01					
370	r400vgt_index_dealloc_line_list_01	00:00:23	49431	PASS	49431
\\fl_mkelly2\d\r400\regress/49431_020904090906/r400vgt_index_dealloc_line_list_01					
371	r400vgt_index_dealloc_points_01	00:00:27	49431	PASS	49431
\\fl_mkelly2\d\r400\regress/49431_020904090906/r400vgt_index_dealloc_points_01					
372	r400vgt_index_dealloc_triangle_list_01	00:01:00	49431	PASS	49431
\\fl_mkelly2\d\r400\regress/49431_020904090906/r400vgt_index_dealloc_triangle_list_01					
373	r400vgt_index_min_max_01	00:00:18	49431	PASS	49431
\\fl_mkelly2\d\r400\regress/49431_020904090906/r400vgt_index_min_max_01					
374	r400vgt_index_min_max_02	00:00:18	49431	PASS	49431
\\fl_mkelly2\d\r400\regress/49431_020904090906/r400vgt_index_min_max_02					
375	r400vgt_index_offset_01	00:00:16	49431	PASS	49431
\\fl_mkelly2\d\r400\regress/49431_020904090906/r400vgt_index_offset_01					
376	r400vgt_index_offset_02	00:00:16	49431	PASS	49431
\\fl_mkelly2\d\r400\regress/49431_020904090906/r400vgt_index_offset_02					
377	r400vgt_index_offset_03	00:00:16	49431	PASS	49431
\\fl_mkelly2\d\r400\regress/49431_020904090906/r400vgt_index_offset_03					
378	r400vgt_index_size_01	00:00:17	49431	PASS	49431
\\fl_mkelly2\d\r400\regress/49431_020904090906/r400vgt_index_size_01					
379	r400vgt_index_source_switch_01	00:00:17	49431	PASS	49431
\\fl_mkelly2\d\r400\regress/49431_020904090906/r400vgt_index_source_switch_01					
380	r400vgt_line_list_01	00:00:22	49431	PASS	49431
\\fl_mkelly2\d\r400\regress/49431_020904090906/r400vgt_line_list_01					
381	r400vgt_line_loop_01	00:00:22	49431	PASS	49431
\\fl_mkelly2\d\r400\regress/49431_020904090906/r400vgt_line_loop_01					
382	r400vgt_line_strip_01	00:00:22	49431	PASS	49431
\\fl_mkelly2\d\r400\regress/49431_020904090906/r400vgt_line_strip_01					

383	r400vgt_pass_thru_all_prims_01	00:00:12	49431	PASS	49431
\\fl_mkelly2\d\r400\regress/49431_020904090906/r400vgt_pass_thru_all_prims_01					
384	r400vgt_point_list_01	00:00:22	49431	PASS	49431
\\fl_mkelly2\d\r400\regress/49431_020904090906/r400vgt_point_list_01					
385	r400vgt_polygon_01	00:00:19	49431	PASS	49431
\\fl_mkelly2\d\r400\regress/49431_020904090906/r400vgt_polygon_01					
386	r400vgt_provoking_vtx_all_01	00:00:13	49431	PASS	49431
\\fl_mkelly2\d\r400\regress/49431_020904090906/r400vgt_provoking_vtx_all_01					
387	r400vgt_provoking_vtx_edgeflags_all_01	00:00:14	49431	PASS	49431
\\fl_mkelly2\d\r400\regress/49431_020904090906/r400vgt_provoking_vtx_edgeflags_all_01					
388	r400vgt_quad_list_01	00:00:16	49431	PASS	49431
\\fl_mkelly2\d\r400\regress/49431_020904090906/r400vgt_quad_list_01					
389	r400vgt_quad_strip_01	00:00:25	49431	PASS	49431
\\fl_mkelly2\d\r400\regress/49431_020904090906/r400vgt_quad_strip_01					
390	r400vgt_rectangle_list_01	00:00:19	49431	PASS	49431
\\fl_mkelly2\d\r400\regress/49431_020904090906/r400vgt_rectangle_list_01					
391	r400vgt_reuse_depth_line_list_01	00:00:20	49431	PASS	49431
\\fl_mkelly2\d\r400\regress/49431_020904090906/r400vgt_reuse_depth_line_list_01					
392	r400vgt_reuse_depth_point_list_01	00:00:22	49431	PASS	49431
\\fl_mkelly2\d\r400\regress/49431_020904090906/r400vgt_reuse_depth_point_list_01					
393	r400vgt_reuse_depth_triangle_list_01	00:00:28	49431	PASS	49431
\\fl_mkelly2\d\r400\regress/49431_020904090906/r400vgt_reuse_depth_triangle_list_01					
394	r400vgt_reuse_index_line_list_01	00:01:00	49431	PASS	49431
\\fl_mkelly2\d\r400\regress/49431_020904090906/r400vgt_reuse_index_line_list_01					
395	r400vgt_reuse_index_point_list_01	00:00:35	49431	PASS	49431
\\fl_mkelly2\d\r400\regress/49431_020904090906/r400vgt_reuse_index_point_list_01					
396	r400vgt_reuse_index_triangle_list_01	00:00:45	49431	PASS	49431
\\fl_mkelly2\d\r400\regress/49431_020904090906/r400vgt_reuse_index_triangle_list_01					
397	r400vgt_reuse_index_triangle_list_02	00:00:12	49431	PASS	49431
\\fl_mkelly2\d\r400\regress/49431_020904090906/r400vgt_reuse_index_triangle_list_02					
398	r400vgt_reuse_index_triangle_list_03	00:00:13	49431	PASS	49431
\\fl_mkelly2\d\r400\regress/49431_020904090906/r400vgt_reuse_index_triangle_list_03					

AMD1044\_0185710

399	r400vgt_triangle_fan_01	00:00:15	49431	PASS	49431
\\fl_mkelly2\d\r400\regress/49431_020904090906/r400vgt_triangle_fan_01					
400	r400vgt_triangle_list_01	00:00:19	49431	PASS	49431
\\fl_mkelly2\d\r400\regress/49431_020904090906/r400vgt_triangle_list_01					
401	r400vgt_triangle_strip_01	00:00:18	49431	PASS	49431
\\fl_mkelly2\d\r400\regress/49431_020904090906/r400vgt_triangle_strip_01					
402	r400vgt_triangle_wflags_01	00:00:30	49431	PASS	49431
\\fl_mkelly2\d\r400\regress/49431_020904090906/r400vgt_triangle_wflags_01					
403	r400vgt_vtx_vector_packing_01	00:00:17	49431	PASS	49431
\\fl_mkelly2\d\r400\regress/49431_020904090906/r400vgt_vtx_vector_packing_01					
404	r400vgt_multi_context_01	00:00:18	49431	PASS	49431
\\fl_mkelly2\d\r400\regress/49431_020904090906/r400vgt_multi_context_01					
405	r400vgt_multi_context_02	00:00:24	49431	PASS	49431
\\fl_mkelly2\d\r400\regress/49431_020904090906/r400vgt_multi_context_02					
406	r400vgt_multi_context_03	00:00:26	49431	PASS	49431
\\fl_mkelly2\d\r400\regress/49431_020904090906/r400vgt_multi_context_03					
407	r400vgt_multi_context_04	00:00:20	49431	PASS	49431
\\fl_mkelly2\d\r400\regress/49431_020904090906/r400vgt_multi_context_04					
408	r400vgt_multi_context_05	00:00:21	49431	PASS	49431
\\fl_mkelly2\d\r400\regress/49431_020904090906/r400vgt_multi_context_05					
409	r400vgt_multi_context_06	00:00:21	49431	PASS	49431
\\fl_mkelly2\d\r400\regress/49431_020904090906/r400vgt_multi_context_06					
410	r400vgt_multi_context_07	00:00:21	49431	PASS	49431
\\fl_mkelly2\d\r400\regress/49431_020904090906/r400vgt_multi_context_07					
411	r400vgt_multi_context_08	00:00:21	49431	PASS	49431
\\fl_mkelly2\d\r400\regress/49431_020904090906/r400vgt_multi_context_08					
412	r400vgt_multi_context_09	00:00:21	49431	PASS	49431
\\fl_mkelly2\d\r400\regress/49431_020904090906/r400vgt_multi_context_09					
413	r400vgt_multi_context_10	00:00:21	49431	PASS	49431
\\fl_mkelly2\d\r400\regress/49431_020904090906/r400vgt_multi_context_10					
414	r400vgt_multi_context_11	00:00:21	49431	PASS	49431
\\fl_mkelly2\d\r400\regress/49431_020904090906/r400vgt_multi_context_11					

AMD1044\_0185711



415	r400vgt_multi_context_12	00:00:21	49431	PASS	49431
\\fl_mkelly2\d\r400\regress/49431_020904090906/r400vgt_multi_context_12					
416	r400vgt_suppress_eop_01	00:00:17	49431	PASS	49431
\\fl_mkelly2\d\r400\regress/49431_020904090906/r400vgt_suppress_eop_01					
417	r400vgt_suppress_eop_02	00:00:15	49431	PASS	49431
\\fl_mkelly2\d\r400\regress/49431_020904090906/r400vgt_suppress_eop_02					
418	r400vgt_suppress_eop_03	00:00:27	49431	PASS	49431
\\fl_mkelly2\d\r400\regress/49431_020904090906/r400vgt_suppress_eop_03					
419	r400vgt_suppress_eop_04	00:00:37	49431	FAIL	
compare mismatch No					
420	r400su_4tri_text_offscreen_01	00:00:12	49431	PASS	49431
\\fl_mkelly2\d\r400\regress/49431_020904090906/r400su_4tri_text_offscreen_01					
421	r400su_baryc_test_01	00:00:12	49431	PASS	49431
\\fl_mkelly2\d\r400\regress/49431_020904090906/r400su_baryc_test_01					
422	r400su_baryc_test_02	00:00:12	49431	PASS	49431
\\fl_mkelly2\d\r400\regress/49431_020904090906/r400su_baryc_test_02					
423	r400su_baryc_test_03	00:00:53	49431	PASS	49431
\\fl_mkelly2\d\r400\regress/49431_020904090906/r400su_baryc_test_03					
424	r400su_baryc_test_04	00:00:18	49431	PASS	49431
\\fl_mkelly2\d\r400\regress/49431_020904090906/r400su_baryc_test_04					
425	r400su_clip_edgeflag_polymode_01	00:00:11	49431	FAIL	
compare mismatch No					
426	r400su_clip_pointsize_test_01	00:00:11	49431	PASS	49431
\\fl_mkelly2\d\r400\regress/49431_020904090906/r400su_clip_pointsize_test_01					
427	r400su_clip_pointttest_01	00:00:17	49431	PASS	49431
\\fl_mkelly2\d\r400\regress/49431_020904090906/r400su_clip_pointttest_01					
428	r400su_clip_pointttest_02	00:00:16	49431	PASS	49431
\\fl_mkelly2\d\r400\regress/49431_020904090906/r400su_clip_pointttest_02					
429	r400su_clip_pointttest_03	00:00:28	49431	PASS	49431
\\fl_mkelly2\d\r400\regress/49431_020904090906/r400su_clip_pointttest_03					
430	r400su_clip_pointttest_04	00:00:17	49431	PASS	49431
\\fl_mkelly2\d\r400\regress/49431_020904090906/r400su_clip_pointttest_04					
431	r400su_clip_polymode_test_01	00:00:29	49431	PASS	49431

```

\\fl_mkelly2\d\r400\regress/49431_020904090906/r400su_clip_polymode_test_01

432 r400su_clipline_01                00:00:13 49431 PASS    49431
      \\fl_mkelly2\d\r400\regress/49431_020904090906/r400su_clipline_01

433 r400su_clippoint_01              00:00:10 49431 PASS    49431
      \\fl_mkelly2\d\r400\regress/49431_020904090906/r400su_clippoint_01

434 r400su_clipvertexsortingfunctional_01 00:00:11 49431 PASS    49431
\\fl_mkelly2\d\r400\regress/49431_020904090906/r400su_clipvertexsortingfunctional_01

435 r400su_cullingfunctional_01      00:00:11 49431 PASS    49431
\\fl_mkelly2\d\r400\regress/49431_020904090906/r400su_cullingfunctional_01

436 r400su_degentri_test_01          00:00:12 49431 PASS    49431
\\fl_mkelly2\d\r400\regress/49431_020904090906/r400su_degentri_test_01

437 r400su_degentri_test_02          00:00:13 49431 PASS    49431
\\fl_mkelly2\d\r400\regress/49431_020904090906/r400su_degentri_test_02

438 r400su_degentri_test_03          00:00:12 49431 PASS    49431
\\fl_mkelly2\d\r400\regress/49431_020904090906/r400su_degentri_test_03

439 r400su_edge_flag_01              00:00:09 49431 PASS    49431
      \\fl_mkelly2\d\r400\regress/49431_020904090906/r400su_edge_flag_01

440 r400su_edge_flag_02              00:00:10 49431 PASS    49431
      \\fl_mkelly2\d\r400\regress/49431_020904090906/r400su_edge_flag_02

441 r400su_edgeflags_triangle_01     00:00:23 49431 PASS    49431
\\fl_mkelly2\d\r400\regress/49431_020904090906/r400su_edgeflags_triangle_01

442 r400su_edgeflags_triangle_02     00:00:23 49431 PASS    49431
\\fl_mkelly2\d\r400\regress/49431_020904090906/r400su_edgeflags_triangle_02

443 r400su_geom_sort_01              00:00:14 49431 PASS    49431
      \\fl_mkelly2\d\r400\regress/49431_020904090906/r400su_geom_sort_01

444 r400su_line_end_cap_functional_01 00:00:21 49431 PASS    49431
\\fl_mkelly2\d\r400\regress/49431_020904090906/r400su_line_end_cap_functional_01

445 r400su_line_end_cap_width_functional_02 00:00:11 49431 PASS    49431
\\fl_mkelly2\d\r400\regress/49431_020904090906/r400su_line_end_cap_width_functional_02

446 r400su_line_test_01              00:00:11 49431 PASS    49431
      \\fl_mkelly2\d\r400\regress/49431_020904090906/r400su_line_test_01

447 r400su_line_test_02              00:00:11 49431 PASS    49431

```

\\fl\_mkelly2\d\r400\regress\49431\_020904090906\r400su\_line\_test\_02

448 r400su\_longstrip\_01 00:00:10 49431 PASS 49431  
\\fl\_mkelly2\d\r400\regress\49431\_020904090906\r400su\_longstrip\_01

449 r400su\_multi\_prim\_01 00:00:12 49431 PASS 49431  
\\fl\_mkelly2\d\r400\regress\49431\_020904090906\r400su\_multi\_prim\_01

450 r400su\_parallel\_orientation\_all\_01 00:00:13 49431 PASS 49431  
\\fl\_mkelly2\d\r400\regress\49431\_020904090906\r400su\_parallel\_orientation\_all\_01

451 r400su\_parallel\_orientation\_all\_02 00:00:14 49431 PASS 49431  
\\fl\_mkelly2\d\r400\regress\49431\_020904090906\r400su\_parallel\_orientation\_all\_02

452 r400su\_pc\_management\_01 00:00:23 49431 PASS 49431  
\\fl\_mkelly2\d\r400\regress\49431\_020904090906\r400su\_pc\_management\_01

453 r400su\_pc\_management\_02 00:00:15 49431 PASS 49431  
\\fl\_mkelly2\d\r400\regress\49431\_020904090906\r400su\_pc\_management\_02

454 r400su\_pc\_management\_03 00:00:15 49431 PASS 49431  
\\fl\_mkelly2\d\r400\regress\49431\_020904090906\r400su\_pc\_management\_03

455 r400su\_point\_sprite\_01 00:00:10 49431 PASS 49431  
\\fl\_mkelly2\d\r400\regress\49431\_020904090906\r400su\_point\_sprite\_01

456 r400su\_point\_sprite\_02 00:00:11 49431 PASS 49431  
\\fl\_mkelly2\d\r400\regress\49431\_020904090906\r400su\_point\_sprite\_02

457 r400su\_point\_sprite\_03 00:00:10 49431 PASS 49431  
\\fl\_mkelly2\d\r400\regress\49431\_020904090906\r400su\_point\_sprite\_03

458 r400su\_point\_sprite\_04 00:00:10 49431 PASS 49431  
\\fl\_mkelly2\d\r400\regress\49431\_020904090906\r400su\_point\_sprite\_04

459 r400su\_point\_sprite\_05 00:00:10 49431 PASS 49431  
\\fl\_mkelly2\d\r400\regress\49431\_020904090906\r400su\_point\_sprite\_05

460 r400su\_point\_sprite\_06 00:00:11 49431 PASS 49431  
\\fl\_mkelly2\d\r400\regress\49431\_020904090906\r400su\_point\_sprite\_06

461 r400su\_point\_sprite\_07 00:00:24 49431 PASS 49431  
\\fl\_mkelly2\d\r400\regress\49431\_020904090906\r400su\_point\_sprite\_07

462 r400su\_point\_sprite\_08 00:00:24 49431 PASS 49431  
\\fl\_mkelly2\d\r400\regress\49431\_020904090906\r400su\_point\_sprite\_08

463 r400su\_point\_wl\_hl6\_functional\_01 00:00:13 49431 PASS 49431

AMD1044\_0185714

```

\\fl_mkelly2\d\r400\regress/49431_020904090906/r400su_point_wl_h16_functional_01

464 r400su_point_wl6_h1_functional_01          00:00:12 49431 PASS    49431
\\fl_mkelly2\d\r400\regress/49431_020904090906/r400su_point_wl6_h1_functional_01

465 r400su_pointsizepresent_01                00:00:10 49431 PASS    49431
\\fl_mkelly2\d\r400\regress/49431_020904090906/r400su_pointsizepresent_01

466 r400su_pointsizepresent_02                00:00:10 49431 PASS    49431
\\fl_mkelly2\d\r400\regress/49431_020904090906/r400su_pointsizepresent_02

467 r400su_polymode_rectangle_01              00:00:10 49431 PASS    49431
\\fl_mkelly2\d\r400\regress/49431_020904090906/r400su_polymode_rectangle_01

468 r400su_polymodeculling_01                 00:00:10 49431 PASS    49431
\\fl_mkelly2\d\r400\regress/49431_020904090906/r400su_polymodeculling_01

469 r400su_polymodefunctional_01              00:00:11 49431 PASS    49431
\\fl_mkelly2\d\r400\regress/49431_020904090906/r400su_polymodefunctional_01

470 r400su_provoking_vtx_edgeflags_triangle_01 00:00:23 49431 PASS    49431
\\fl_mkelly2\d\r400\regress/49431_020904090906/r400su_provoking_vtx_edgeflags_triangle_01

471 r400su_provoking_vtx_edgeflags_triangle_02 00:00:23 49431 PASS    49431
\\fl_mkelly2\d\r400\regress/49431_020904090906/r400su_provoking_vtx_edgeflags_triangle_02

472 r400su_provoking_vtx_edgeflags_triangle_03 00:00:23 49431 PASS    49431
\\fl_mkelly2\d\r400\regress/49431_020904090906/r400su_provoking_vtx_edgeflags_triangle_03

473 r400su_provoking_vtx_edgeflags_triangle_04 00:00:34 49431 PASS    49431
\\fl_mkelly2\d\r400\regress/49431_020904090906/r400su_provoking_vtx_edgeflags_triangle_04

474 r400su_provoking_vtx_line_01               00:00:11 49431 PASS    49431
\\fl_mkelly2\d\r400\regress/49431_020904090906/r400su_provoking_vtx_line_01

475 r400su_provoking_vtx_point_01             00:00:11 49431 PASS    49431
\\fl_mkelly2\d\r400\regress/49431_020904090906/r400su_provoking_vtx_point_01

476 r400su_provoking_vtx_polymode_rectangle_01 00:00:11 49431 PASS    49431
\\fl_mkelly2\d\r400\regress/49431_020904090906/r400su_provoking_vtx_polymode_rectangle_01

477 r400su_provoking_vtx_rectangle_01         00:00:11 49431 PASS    49431
\\fl_mkelly2\d\r400\regress/49431_020904090906/r400su_provoking_vtx_rectangle_01

478 r400su_provoking_vtx_triangle_01          00:00:12 49431 PASS    49431
\\fl_mkelly2\d\r400\regress/49431_020904090906/r400su_provoking_vtx_triangle_01

479 r400su_rand_line_01                       00:00:31 49431 PASS    49431

```

AMD1044\_0185715

```

\\fl_mkelly2\d\r400\regress/49431_020904090906/r400su_rand_line_01

480 r400su_rand_point_01                00:00:30 49431 PASS    49431
\\fl_mkelly2\d\r400\regress/49431_020904090906/r400su_rand_point_01

481 r400su_rand_tri_01                  00:00:35 49431 PASS    49431
\\fl_mkelly2\d\r400\regress/49431_020904090906/r400su_rand_tri_01

482 r400su_rectangle_list_01            00:00:10 49431 PASS    49431
\\fl_mkelly2\d\r400\regress/49431_020904090906/r400su_rectangle_list_01

483 r400su_sliver_01                    00:00:11 49431 PASS    49431
\\fl_mkelly2\d\r400\regress/49431_020904090906/r400su_sliver_01

484 r400su_triarea_test_01              00:00:10 49431 PASS    49431
\\fl_mkelly2\d\r400\regress/49431_020904090906/r400su_triarea_test_01

485 r400su_triarea_test_02              00:00:13 49431 PASS    49431
\\fl_mkelly2\d\r400\regress/49431_020904090906/r400su_triarea_test_02

486 r400su_triarea_test_03              00:00:15 49431 FAIL
compare mismatch No
487 r400su_triarea_test_04              00:00:27 49431 PASS    49431
\\fl_mkelly2\d\r400\regress/49431_020904090906/r400su_triarea_test_04

488 r400su_vertexsortingfunctional_01    00:00:11 49431 PASS    49431
\\fl_mkelly2\d\r400\regress/49431_020904090906/r400su_vertexsortingfunctional_01

489 r400su_polymode_lines_zero_area_triangle_01 00:00:34 49431 PASS    49431
\\fl_mkelly2\d\r400\regress/49431_020904090906/r400su_polymode_lines_zero_area_triangle_01

490 r400su_polymode_lines_zero_area_triangle_02 00:00:23 49431 PASS    49431
\\fl_mkelly2\d\r400\regress/49431_020904090906/r400su_polymode_lines_zero_area_triangle_02

491 r400su_polymode_points_zero_area_triangle_01 00:00:23 49431 PASS    49431
\\fl_mkelly2\d\r400\regress/49431_020904090906/r400su_polymode_points_zero_area_triangle_01

492 r400su_polymode_points_zero_area_triangle_02 00:00:23 49431 PASS    49431
\\fl_mkelly2\d\r400\regress/49431_020904090906/r400su_polymode_points_zero_area_triangle_02

493 r400su_polymode_zero_area_triangle_01 00:00:23 49431 PASS    49431
\\fl_mkelly2\d\r400\regress/49431_020904090906/r400su_polymode_zero_area_triangle_01

494 r400su_polymode_zero_area_triangle_02 00:00:35 49431 PASS    49431
\\fl_mkelly2\d\r400\regress/49431_020904090906/r400su_polymode_zero_area_triangle_02

495 r400su_polymode_zero_area_triangle_03 00:00:23 49431 PASS    49431
\\fl_mkelly2\d\r400\regress/49431_020904090906/r400su_polymode_zero_area_triangle_03

```

496	r400su_polymode_zero_area_triangle_04	00:00:23	49431	PASS	49431
\\fl_mkelly2\d\r400\regress/49431_020904090906/r400su_polymode_zero_area_triangle_04					
497	r400su_polymode_lines_degen_triangle_01	00:00:23	49431	PASS	49431
\\fl_mkelly2\d\r400\regress/49431_020904090906/r400su_polymode_lines_degen_triangle_01					
498	r400su_polymode_lines_degen_triangle_02	00:00:23	49431	PASS	49431
\\fl_mkelly2\d\r400\regress/49431_020904090906/r400su_polymode_lines_degen_triangle_02					
499	r400su_polymode_points_degen_triangle_01	00:00:22	49431	PASS	49431
\\fl_mkelly2\d\r400\regress/49431_020904090906/r400su_polymode_points_degen_triangle_01					
500	r400su_polymode_points_degen_triangle_02	00:00:23	49431	PASS	49431
\\fl_mkelly2\d\r400\regress/49431_020904090906/r400su_polymode_points_degen_triangle_02					
501	r400vte_coverage_01	00:00:15	49431	PASS	49431
\\fl_mkelly2\d\r400\regress/49431_020904090906/r400vte_coverage_01					
502	r400vte_simple_point_01	00:00:10	49431	PASS	49431
\\fl_mkelly2\d\r400\regress/49431_020904090906/r400vte_simple_point_01					
503	r400vte_simple_triangle_01	00:00:21	49431	PASS	49431
\\fl_mkelly2\d\r400\regress/49431_020904090906/r400vte_simple_triangle_01					
504	r400vte_w0_fmt_01	00:00:11	49431	PASS	49431
\\fl_mkelly2\d\r400\regress/49431_020904090906/r400vte_w0_fmt_01					
505	r400vte_w0_fmt_03	00:00:10	49431	PASS	49431
\\fl_mkelly2\d\r400\regress/49431_020904090906/r400vte_w0_fmt_03					
506	r400vte_xy_fmt_01	00:00:10	49431	PASS	49431
\\fl_mkelly2\d\r400\regress/49431_020904090906/r400vte_xy_fmt_01					
507	r400vte_xyz_scale_01	00:00:10	49431	PASS	49431
\\fl_mkelly2\d\r400\regress/49431_020904090906/r400vte_xyz_scale_01					
508	r400vte_xyz_scale_02	00:00:10	49431	PASS	49431
\\fl_mkelly2\d\r400\regress/49431_020904090906/r400vte_xyz_scale_02					
509	r400vte_z_fmt_01	00:00:10	49431	PASS	49431
\\fl_mkelly2\d\r400\regress/49431_020904090906/r400vte_z_fmt_01					
510	r400sanity_persp_projection_01	00:00:08	49431	PASS	49431
\\fl_mkelly2\d\r400\regress/49431_020904090906/r400sanity_persp_projection_01					
511	r400sanity_vfd_texture_sample_01	00:00:12	49431	PASS	49431
\\fl_mkelly2\d\r400\regress/49431_020904090906/r400sanity_vfd_texture_sample_01					

AMD1044\_0185717

```
512 primlib_1st_tri_june15                00:00:10 49431 PASS    49431
\\fl_mkelly2\d\r400\regress/49431_020904090906/primlib_1st_tri_june15

513 primlib_gouraud_tri_1_xyz_vb_1_rgb_vb  00:00:11 49431 PASS    49431
\\fl_mkelly2\d\r400\regress/49431_020904090906/primlib_gouraud_tri_1_xyz_vb_1_rgb_vb

514 primlib_gouraud_triangles_2_draw_passes 00:00:14 49431 PASS    49431
\\fl_mkelly2\d\r400\regress/49431_020904090906/primlib_gouraud_triangles_2_draw_passes

515 primlib_parameterized_simple_triangle  00:00:11 49431 PASS    49431
\\fl_mkelly2\d\r400\regress/49431_020904090906/primlib_parameterized_simple_triangle

516 primlib_template_simple_triangle      00:00:11 49431 FAIL
compare mismatch No

517 primlib_tex_tri                        00:00:13 49431 PASS    49431
      \\fl_mkelly2\d\r400\regress/49431_020904090906/primlib_tex_tri
```

```
+-----+
-----+
```

03:55:25

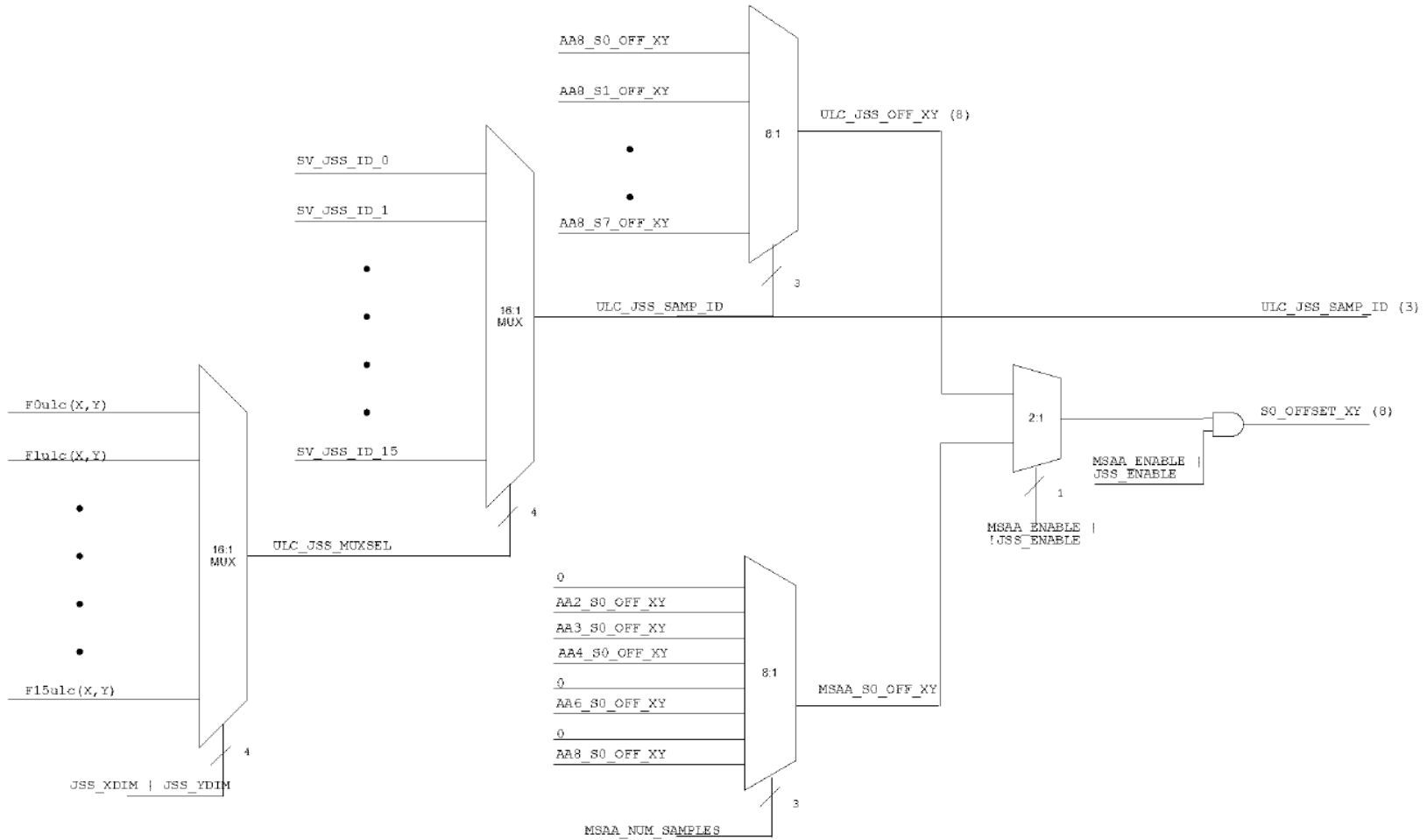
```

+-----+
+ Regression Summary:  R400 EMU SYNC 49431
+ Date: Wed Sep  4 23:20:17 2002
+-----+
+ UNIT | Total Tests | Tests Run | Tests Pass | %Pass |
+-----+
SC      164      164      162      98.78
VGT     147     147     146     99.32
CL      110     108     107     99.07
SU       81      81      79     97.53
VTE       9       9       9    100.00
SANITY    2       2       2    100.00
STRESS    0       0       0     0.00
MISC      6       6       5     83.33
+-----+
PA      519     517     510     98.65
+-----+

```

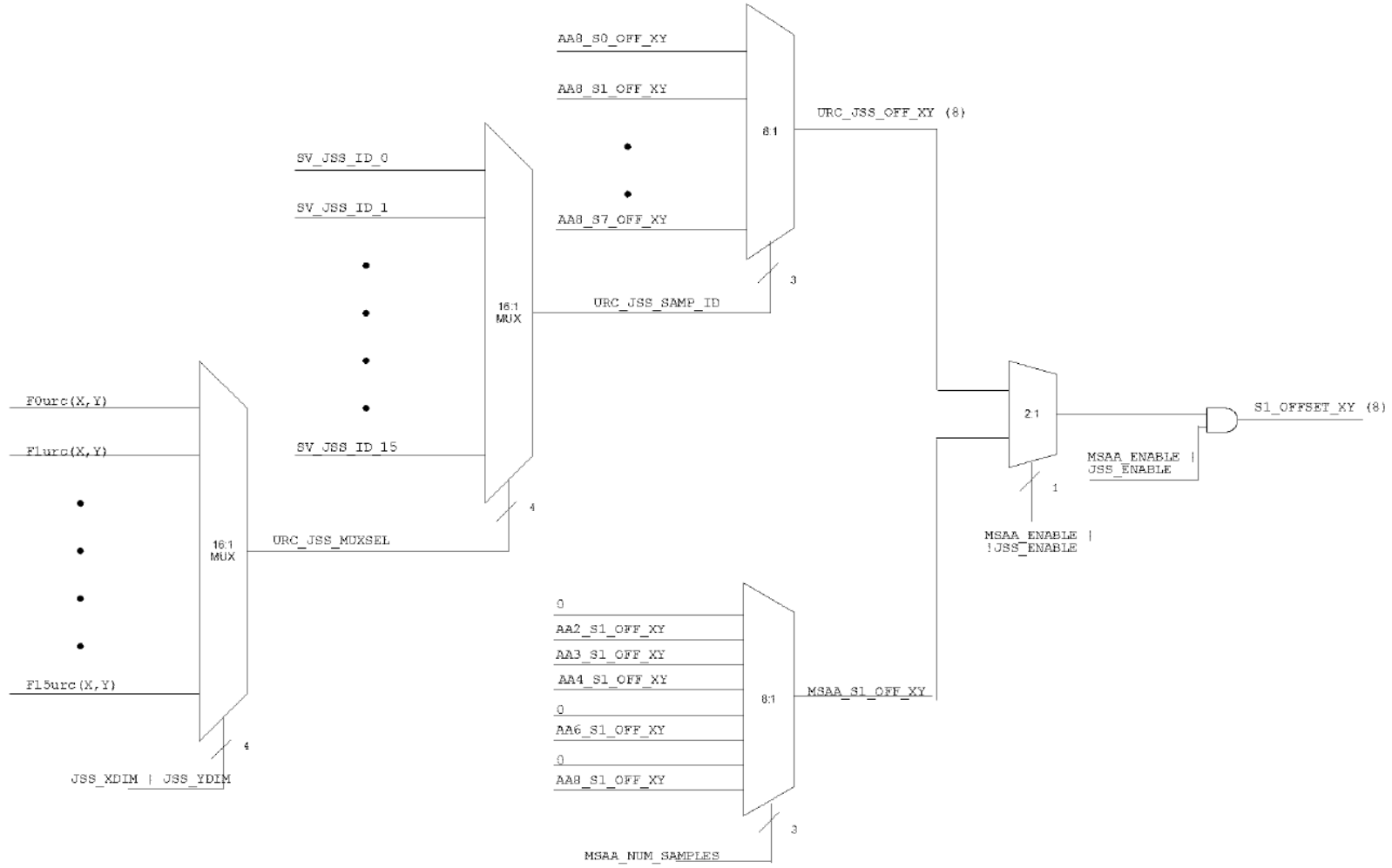


**Sample 0 Offset Determination**  
**ULC JSS Pixel if JSS**



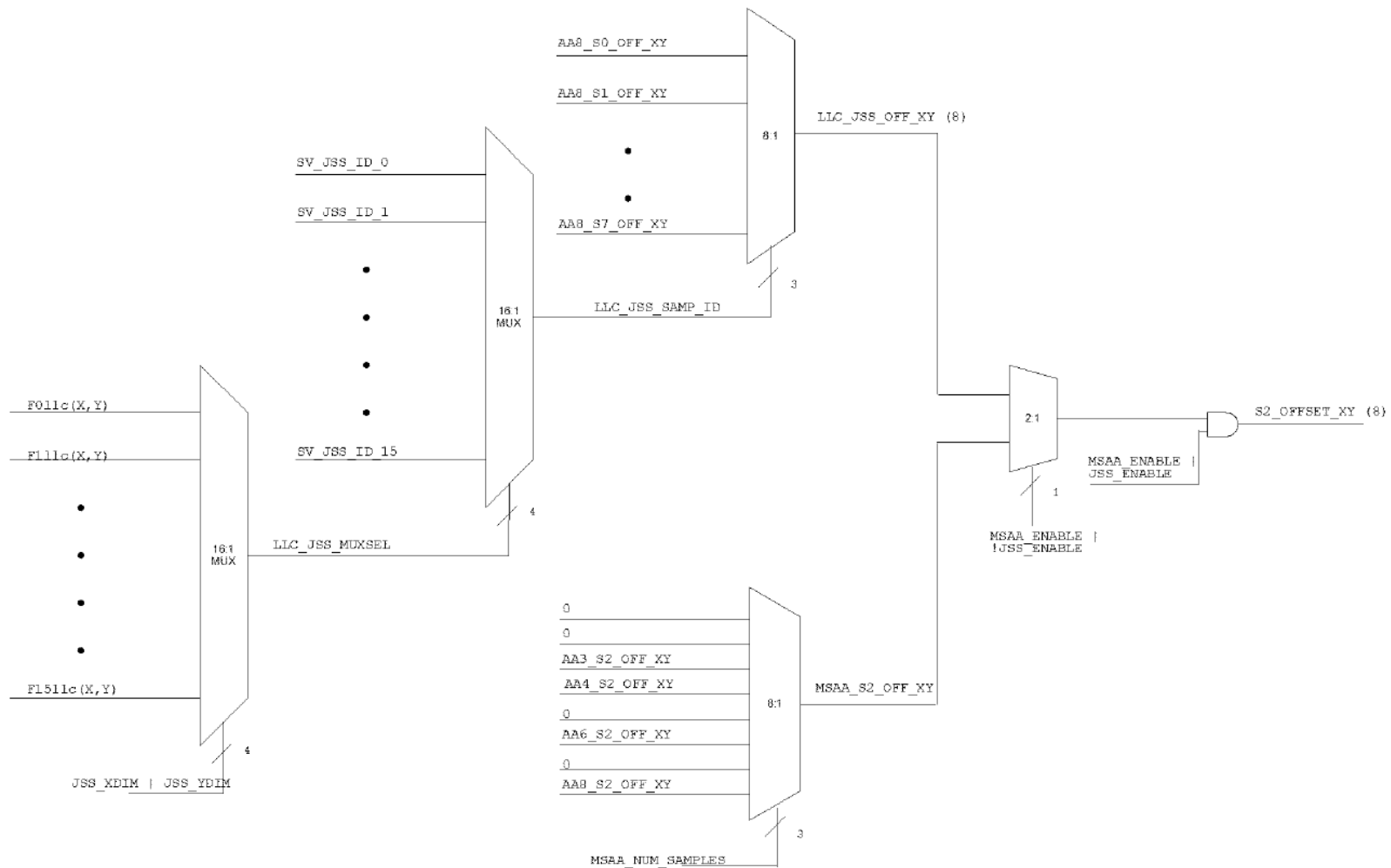
AMD1044\_0185720

**Sample 1 Offset Determination**  
**URC JSS Pixel if JSS**



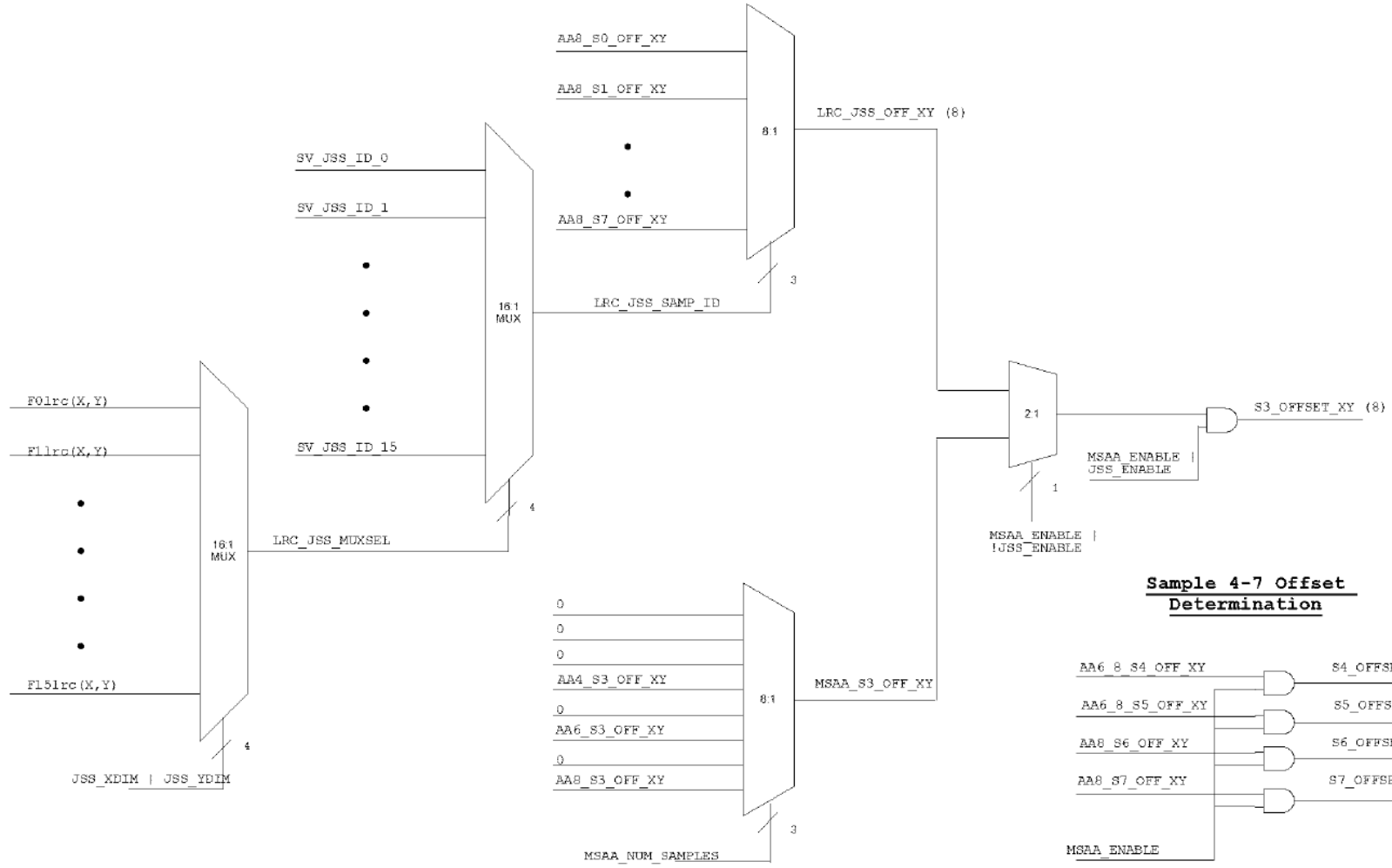
AMD1044\_0185721

**Sample 2 Offset Determination**  
**LLC JSS Pixel if JSS**

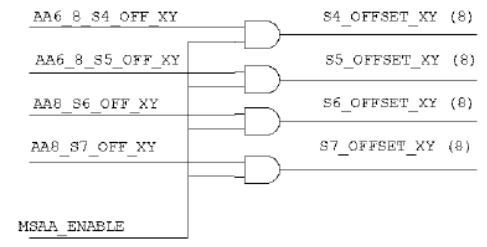


AMD1044\_0185722

**Sample 3 Offset Determination**  
**LRC JSS Pixel if JSS**



**Sample 4-7 Offset Determination**



AMD1044\_0185723