

[54] ADJUSTABLE ANCHORING ASSEMBLY

[75] Inventors: James D. Klingensmith, Apollo; Lyle W. Hovland, Murrysville, both of Pa.

[73] Assignee: Aluminum Company of America, Pittsburgh, Pa.

[21] Appl. No.: 680,947

[22] Filed: Dec. 24, 1984

[51] Int. Cl.⁴ A01K 97/10

[52] U.S. Cl. 248/539; 248/230; 248/534; 343/892

[58] Field of Search 248/539, 230, 534, 65, 248/297.2, 200, 509; 343/892, 880, 888; 410/150, 130

[56] References Cited

U.S. PATENT DOCUMENTS

2,671,937	3/1954	Finke	248/539
2,831,339	4/1958	Jones	248/65
2,970,799	2/1961	Pinson	248/230
3,347,572	10/1967	Pfaff et al.	248/230
3,358,952	12/1967	Burns	248/539
4,406,386	9/1983	Rasor et al.	248/297.2
4,500,064	2/1985	Calabro	248/539

FOREIGN PATENT DOCUMENTS

1270497	7/1961	France	248/230
2471057	6/1981	France	343/892

OTHER PUBLICATIONS

Andrew Corporation Catalog #21-Oct./21/1957, p. 71.

Primary Examiner—Ramon S. Britts

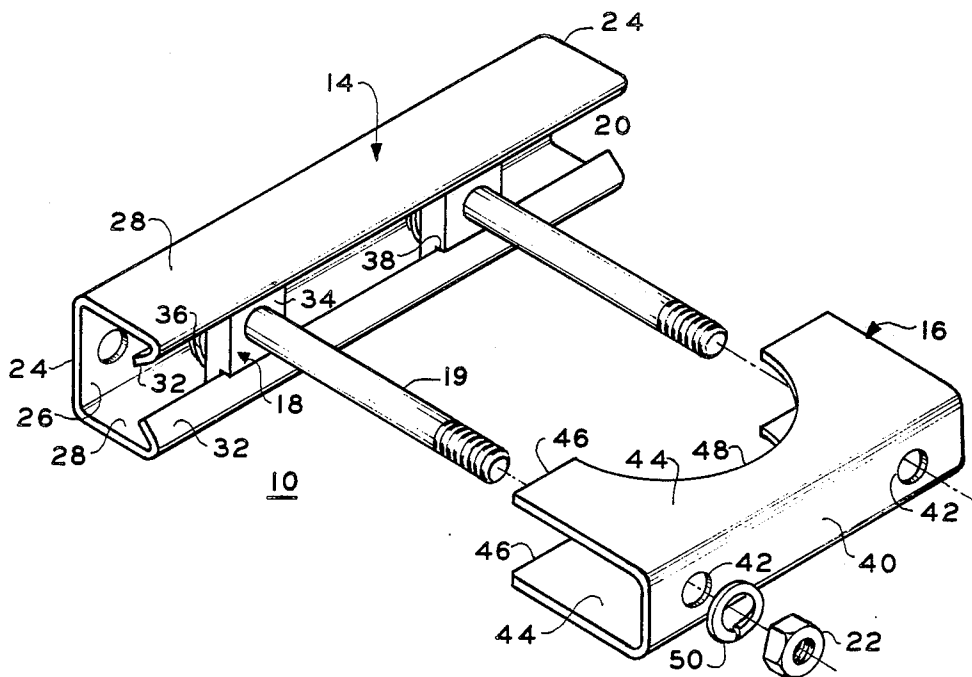
Assistant Examiner—Ramon O. Ramirez

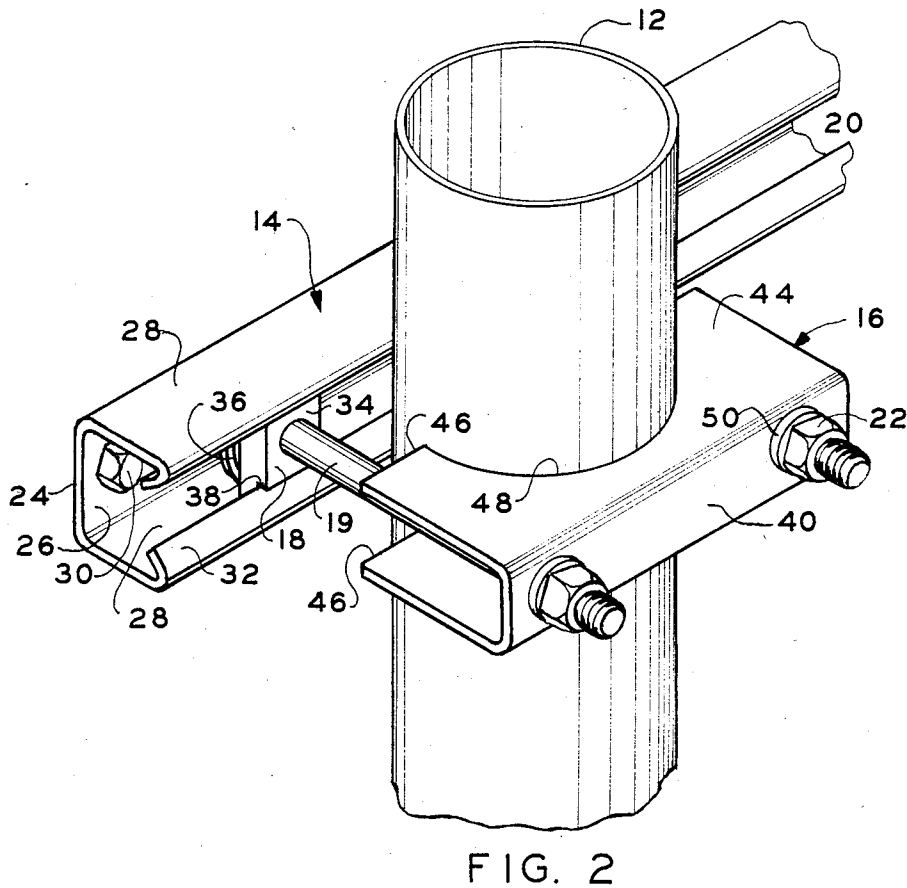
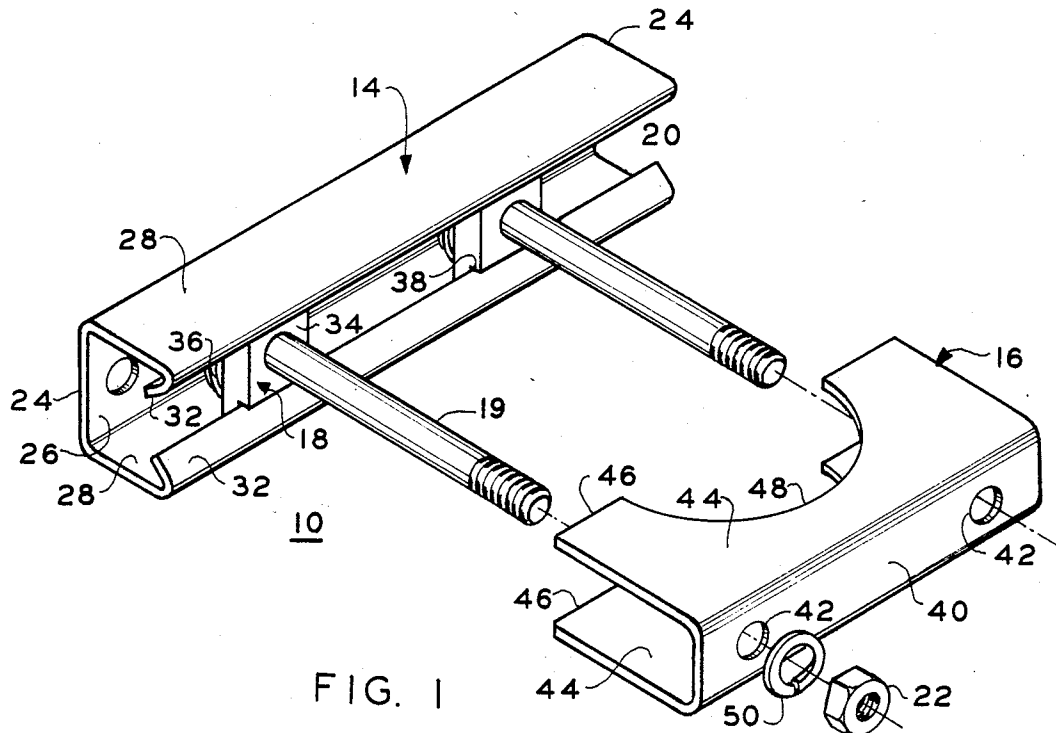
Attorney, Agent, or Firm—Brian D. Smith

[57] ABSTRACT

A mounting structure for satellite dish antennae and method and means for anchoring the structure to the roof or sidewall of a typical residential building, such as a house, are disclosed. The mounting structure includes a mast for supporting the dish antennae. The anchoring means includes a bar having a back portion and sides which define an open-ended channel. The sides of the bar are further provided with integral adjoining lips which extend the length of the bar. Also included in the assembly is a clamp provided with holes through which bolt means may be inserted to tighten and secure the clamp about the mounting structure's mast to the bar's lips. When so tightened, the clamp tightly engages the external surface of the mast to prevent it from torsional movement relative to the clamp.

9 Claims, 5 Drawing Figures





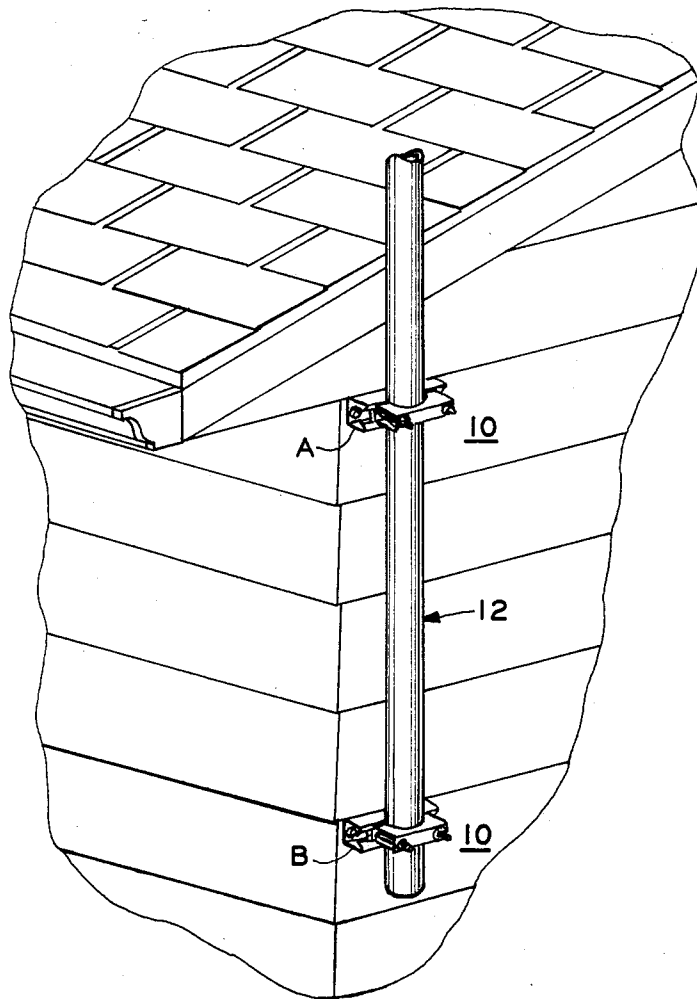


FIG. 3

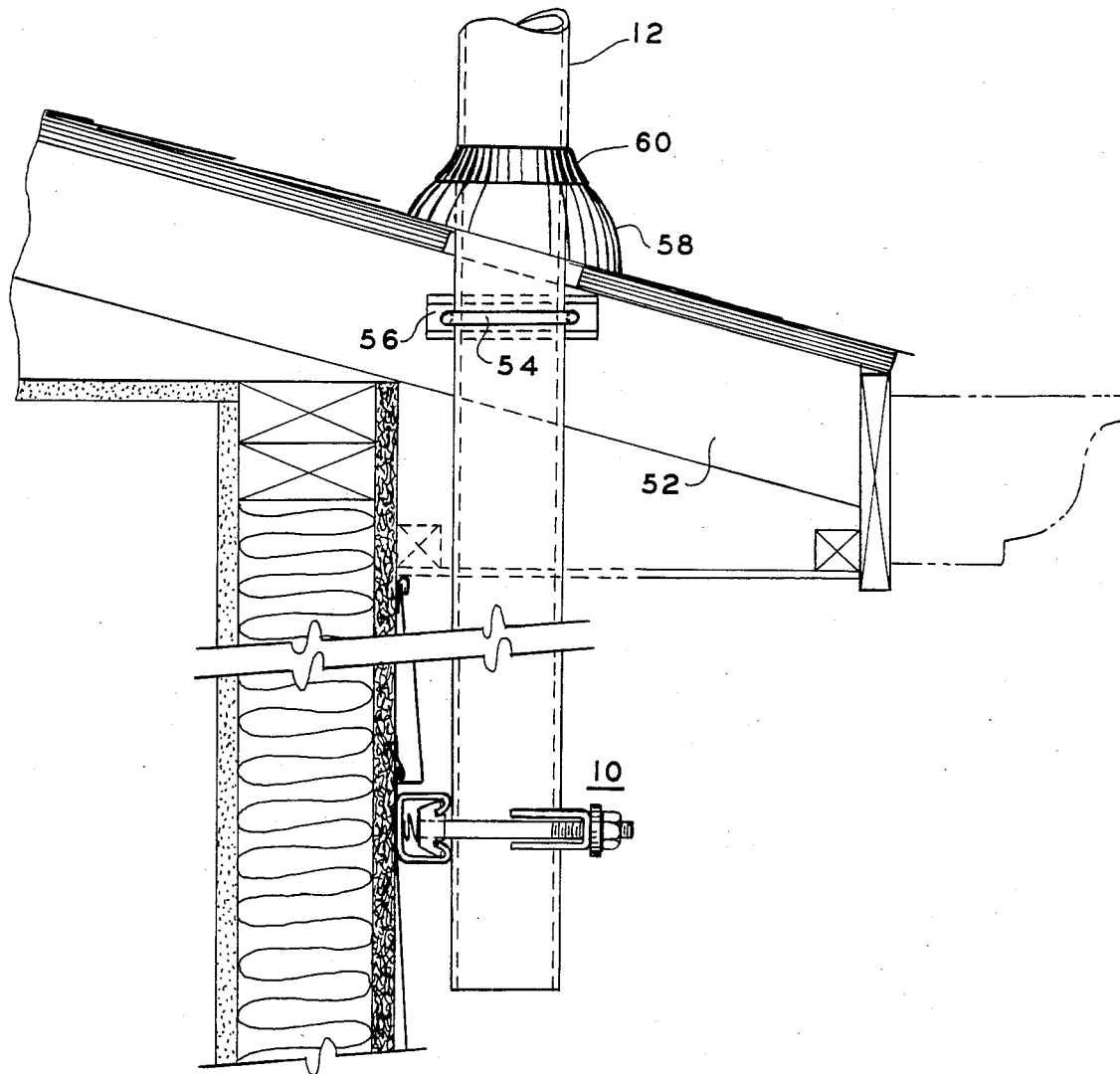


FIG. 4

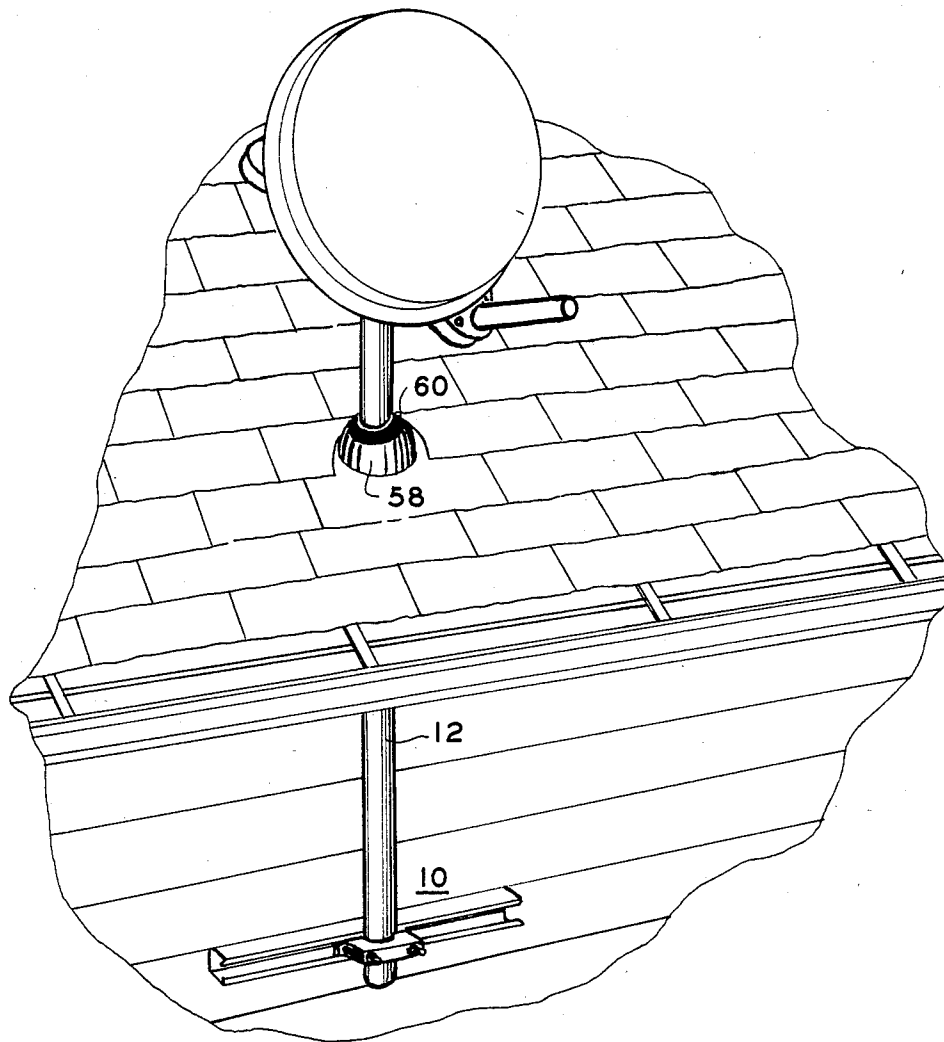


FIG. 5

Explore Litigation Insights

Docket Alarm provides insights to develop a more informed litigation strategy and the peace of mind of knowing you're on top of things.

Real-Time Litigation Alerts



Keep your litigation team up-to-date with **real-time alerts** and advanced team management tools built for the enterprise, all while greatly reducing PACER spend.

Our comprehensive service means we can handle Federal, State, and Administrative courts across the country.

Advanced Docket Research



With over 230 million records, Docket Alarm's cloud-native docket research platform finds what other services can't. Coverage includes Federal, State, plus PTAB, TTAB, ITC and NLRB decisions, all in one place.

Identify arguments that have been successful in the past with full text, pinpoint searching. Link to case law cited within any court document via Fastcase.

Analytics At Your Fingertips



Learn what happened the last time a particular judge, opposing counsel or company faced cases similar to yours.

Advanced out-of-the-box PTAB and TTAB analytics are always at your fingertips.

API

Docket Alarm offers a powerful API (application programming interface) to developers that want to integrate case filings into their apps.

LAW FIRMS

Build custom dashboards for your attorneys and clients with live data direct from the court.

Automate many repetitive legal tasks like conflict checks, document management, and marketing.

FINANCIAL INSTITUTIONS

Litigation and bankruptcy checks for companies and debtors.

E-DISCOVERY AND LEGAL VENDORS

Sync your system to PACER to automate legal marketing.