



US 20190174571A1

(19) **United States**

(12) **Patent Application Publication**

Deenoo et al.

(10) **Pub. No.: US 2019/0174571 A1**

(43) **Pub. Date: Jun. 6, 2019**

(54) **LIGHT CONNECTIVITY AND AUTONOMOUS MOBILITY**

H04W 76/11 (2006.01)

H04W 36/08 (2006.01)

H04W 36/30 (2006.01)

H04W 76/28 (2006.01)

(71) Applicant: **IDAC Holdings, Inc.**, Wilmington, DE (US)

(52) **U.S. Cl.**

CPC *H04W 76/27* (2018.02); *H04W 68/02*

(2013.01); *H04W 76/11* (2018.02); *H04W*

72/14 (2013.01); *H04W 36/30* (2013.01);

H04W 76/28 (2018.02); *H04W 36/08*

(2013.01)

(72) Inventors: **Yugeswar Deenoo**, Chalfont, PA (US); **Ghyslain Pelletier**, Montréal (CA); **Ping Hsuan Tan**, Montreal (CA); **Martino M Freda**, Laval (CA)

(21) Appl. No.: **16/324,025**

(57)

ABSTRACT

(22) PCT Filed: **Aug. 9, 2017**

(86) PCT No.: **PCT/US17/46001**

§ 371 (c)(1),

(2) Date: **Feb. 7, 2019**

Light and/or Inactive state connectivity and/or autonomous mobility techniques are contemplated. A WTRU may, for example, have an inactive/idle mode, a light connected/loosely connected/Inactive mode and/or a connected/fully connected/Active mode. A WTRU in light connected mode may have a WTRU context stored in a RAN. A WTRU may perform an area monitoring procedure while in light connected state. A WTRU may engage in autonomous mobility during light connectivity. A WTRU may move within a logical area (e.g., a RAN paging area), perhaps without notifying the network. The WTRU may provide notice when it has moved outside a logical area (e.g., update RAN paging area). Mobility in light connected state may be network controlled (e.g., to enable handover when data transfer may be allowed and/or ongoing). A WTRU may be reachable during a light connectivity state. A WTRU may engage in autonomous mobility during light connectivity and/or an Inactive state.

Related U.S. Application Data

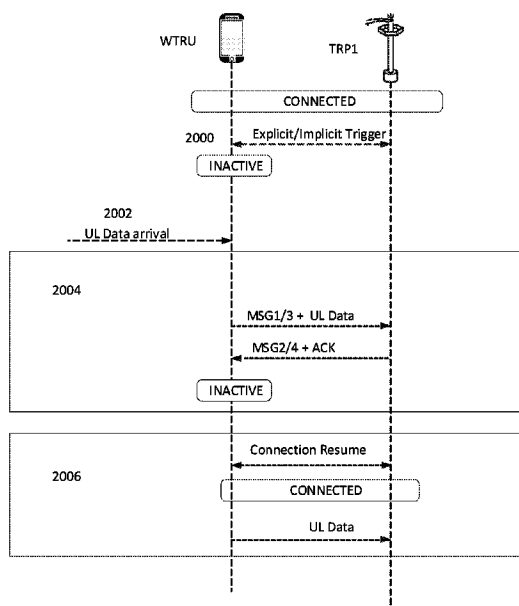
(60) Provisional application No. 62/475,117, filed on Mar. 22, 2017, provisional application No. 62/453,128, filed on Feb. 1, 2017, provisional application No. 62/442,109, filed on Jan. 4, 2017, provisional application No. 62/400,837, filed on Sep. 28, 2016, provisional application No. 62/372,973, filed on Aug. 10, 2016.

Publication Classification

(51) **Int. Cl.**

H04W 76/27 (2006.01)

H04W 68/02 (2006.01)



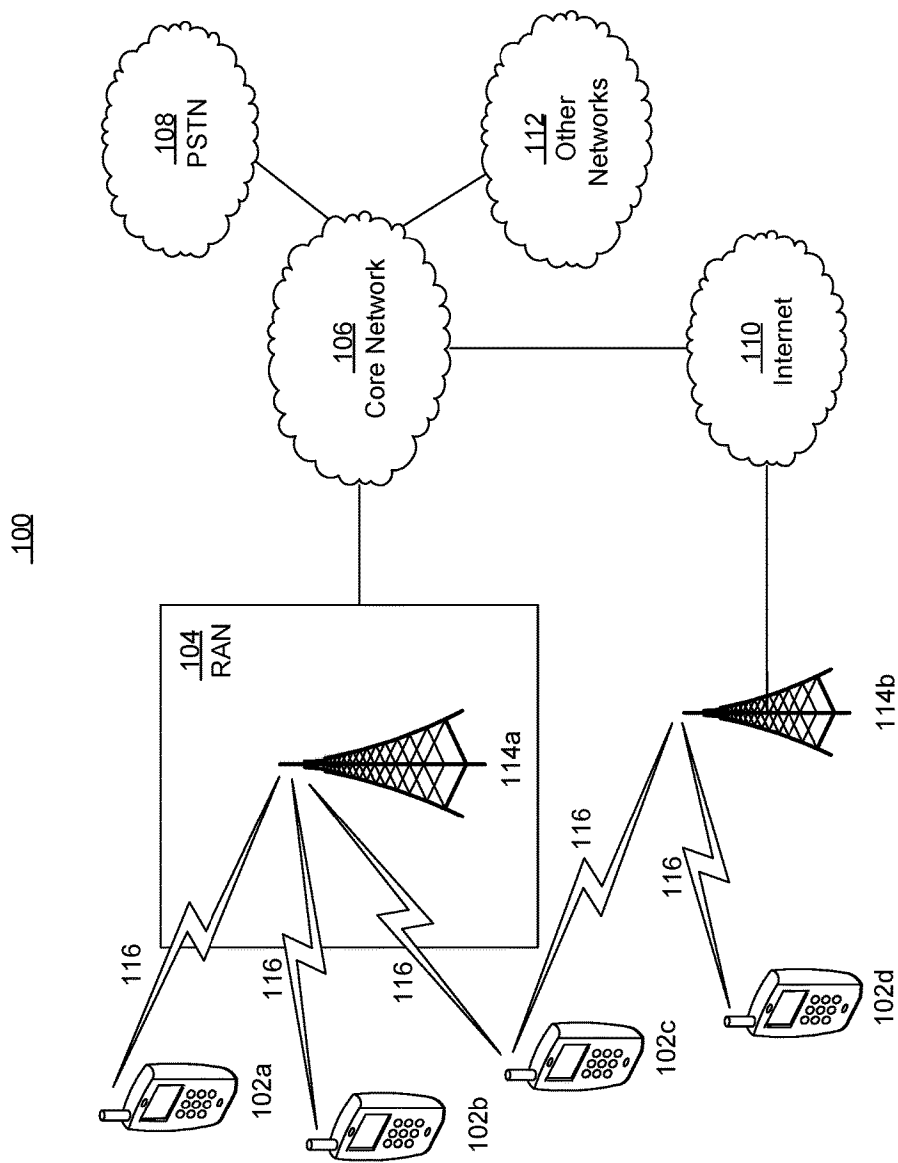


FIG. 1A

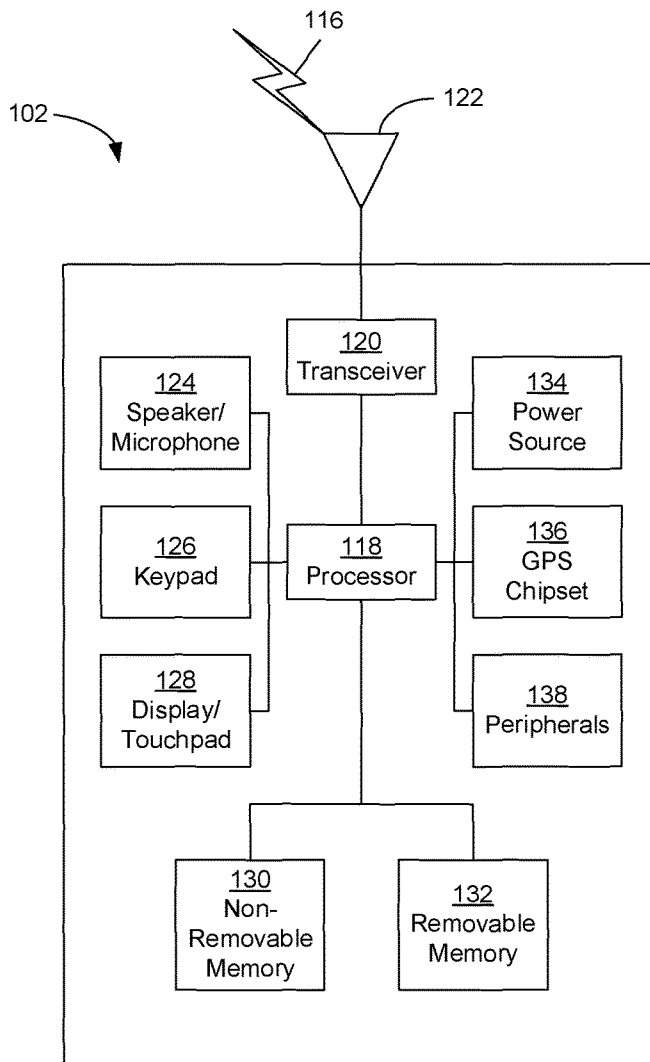


FIG. 1B

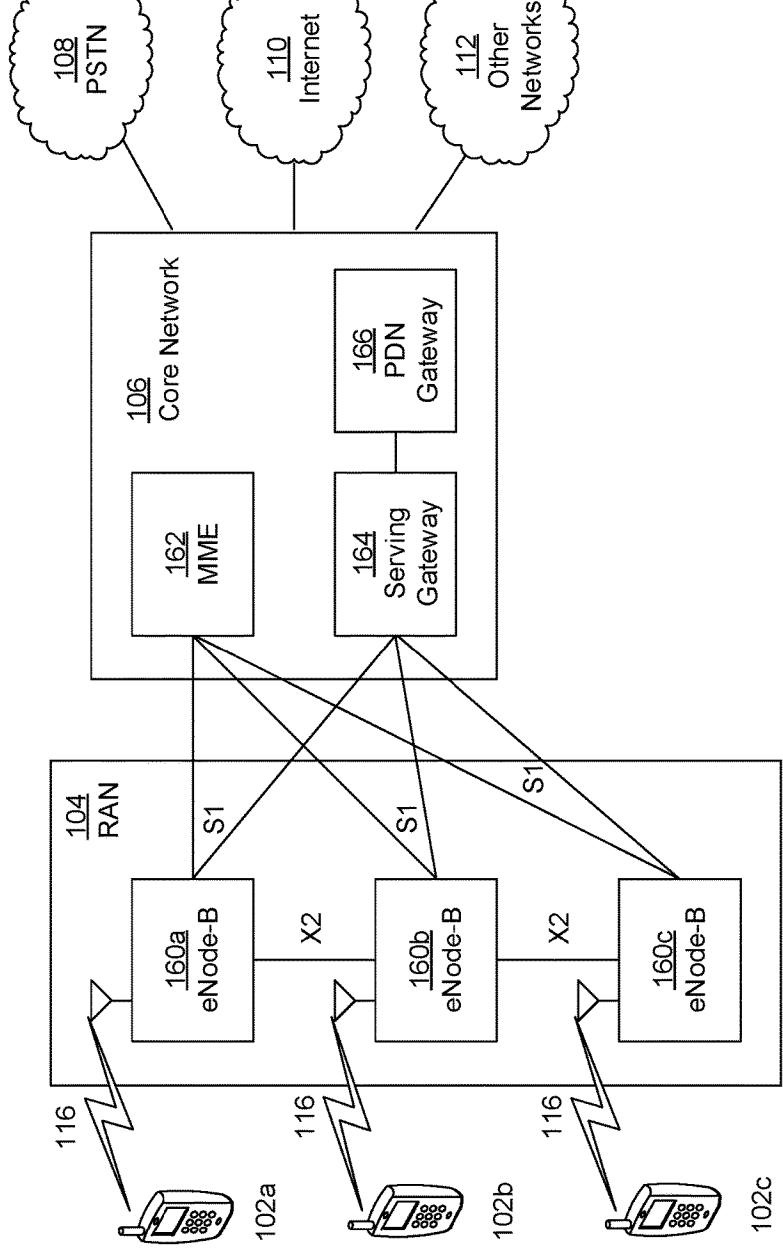


FIG. 1C

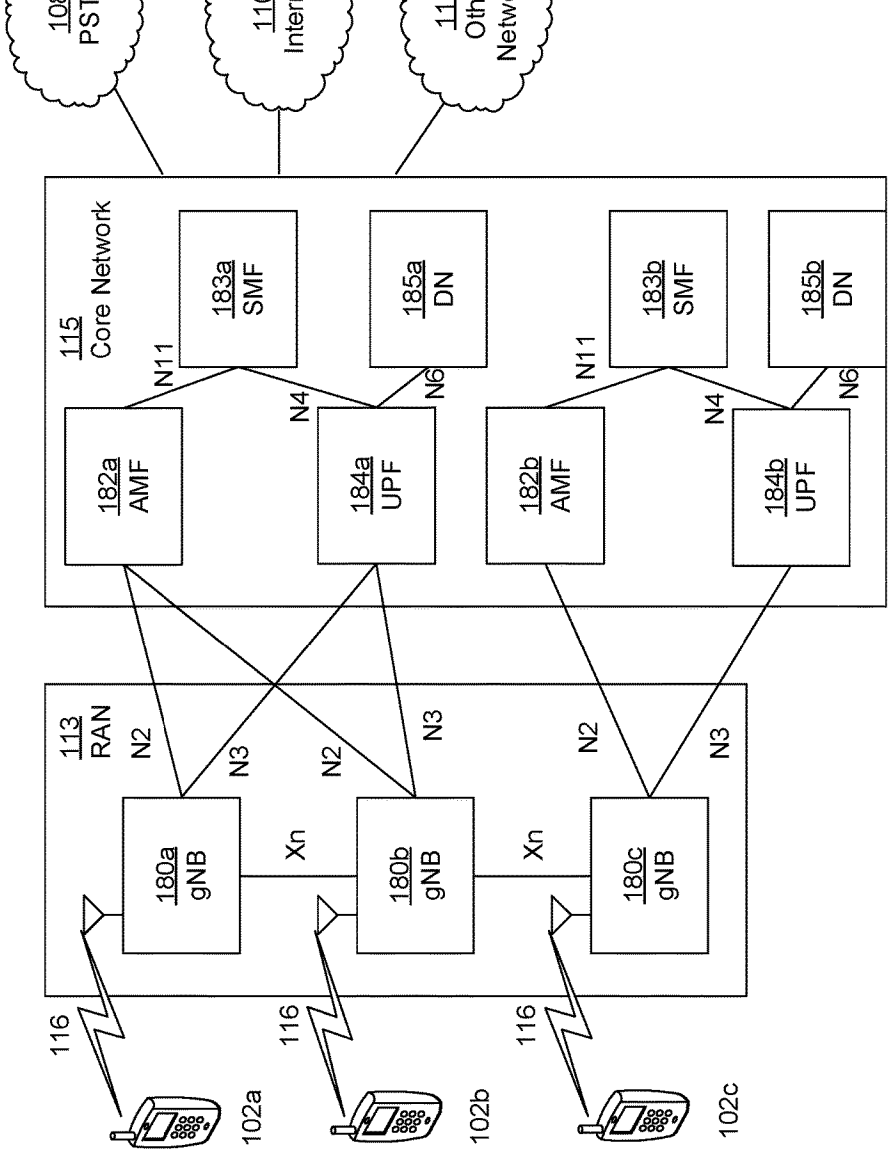


FIG. 1D

Explore Litigation Insights

Docket Alarm provides insights to develop a more informed litigation strategy and the peace of mind of knowing you're on top of things.

Real-Time Litigation Alerts



Keep your litigation team up-to-date with **real-time alerts** and advanced team management tools built for the enterprise, all while greatly reducing PACER spend.

Our comprehensive service means we can handle Federal, State, and Administrative courts across the country.

Advanced Docket Research



With over 230 million records, Docket Alarm's cloud-native docket research platform finds what other services can't. Coverage includes Federal, State, plus PTAB, TTAB, ITC and NLRB decisions, all in one place.

Identify arguments that have been successful in the past with full text, pinpoint searching. Link to case law cited within any court document via Fastcase.

Analytics At Your Fingertips



Learn what happened the last time a particular judge, opposing counsel or company faced cases similar to yours.

Advanced out-of-the-box PTAB and TTAB analytics are always at your fingertips.

API

Docket Alarm offers a powerful API (application programming interface) to developers that want to integrate case filings into their apps.

LAW FIRMS

Build custom dashboards for your attorneys and clients with live data direct from the court.

Automate many repetitive legal tasks like conflict checks, document management, and marketing.

FINANCIAL INSTITUTIONS

Litigation and bankruptcy checks for companies and debtors.

E-DISCOVERY AND LEGAL VENDORS

Sync your system to PACER to automate legal marketing.