



US005737560A

United States Patent [19]

[11] Patent Number: **5,737,560**

Yohanan

[45] Date of Patent: **Apr. 7, 1998**

[54] **GRAPHICAL METHOD AND SYSTEM FOR ACCESSING INFORMATION ON A COMMUNICATIONS NETWORK**

[75] Inventor: **Steven J. Yohanan**, San Francisco, Calif.

[73] Assignee: **Silicon Graphics, Inc.**, Mountain View, Calif.

[21] Appl. No.: **580,742**

[22] Filed: **Dec. 29, 1995**

[51] Int. Cl.⁶ **G06F 3/00**

[52] U.S. Cl. **395/349; 395/329**

[58] Field of Search **395/349, 329**

[56] **References Cited**

U.S. PATENT DOCUMENTS

5,021,976	6/1991	Wexelblat et al.	364/521
5,295,244	3/1994	Dev et al.	395/161

OTHER PUBLICATIONS

Spitz, R.J. et al, "Calalina Marketing Corporation -Company Report," William Blair & Company; ILL. 15 May 1996.

Painter, L., "Microsoft Corporation -Company Report," Merrill Lynch Capital Markets, NY, 12 Mar. 1996.

Kiggen, J., et al, "History And Dynamics of Internet -Industry Report," Prudential Securities, Inc. N.Y. 8 Dec. '95.

<http://www.Whollymac.com/>, *Wholly Mac Software Home Page*, Sep. 1995, pp. 1-6.

<http://www.ffg.com/gnwin2.html>, *ForeFront: GrabNet V2.0 for Windows 3.1*, Feb. 2, 1996, pp. 1-2.

<http://atom.co.jp/VOYAGER/WebTools/WebPin/WebPin-Maker-E.html>, *WebPinProject*, Jan. 29, 1996, pp. 1-3.

<http://home.netscape.com/newsref/pr/newsrelease30.html>, *Netscape Press Release*, Jan. 29, 1996, pp. 1-2.

Electronic Mail Message from wollymac@aol.com. Feb. 2, 1996, 1 page.

Microsoft Windows® 95 Operating Manual (excerpt). © 1981-1995 Microsoft Corporation, pp. 39 and 58.

Microsoft Windows® Press Release, *PR Newswire*. Aug. 24, 1995, 3 pages.

Primary Examiner—Raymond J. Bayerl

Assistant Examiner—A. Katbab

Attorney, Agent, or Firm—Sterne, Kessler, Goldstein & Fox, pllc

[57] **ABSTRACT**

A system and computer-based method for permitting a computer system to access a network location using a browser application by activating a desktop icon. The system comprises a first computer readable program code means for causing the computer system to display a desktop icon associated with a file containing a network address corresponding to the network location. When the desktop icon is activated, a second computer usable program code means causes the computer to launch an instance of a browser application or a new window for a currently executing browser application and a third computer usable program code means causes the computer system to pass the network address to the browser application, thereby accessing the network location.

19 Claims, 4 Drawing Sheets

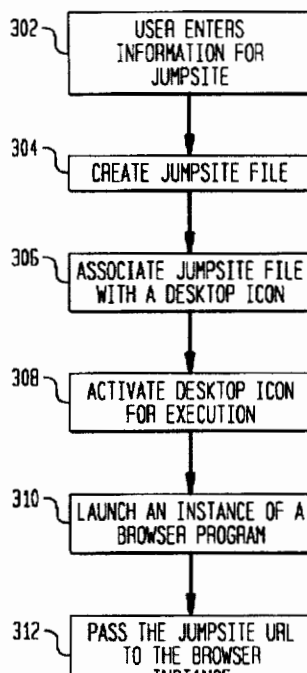


FIG. 1

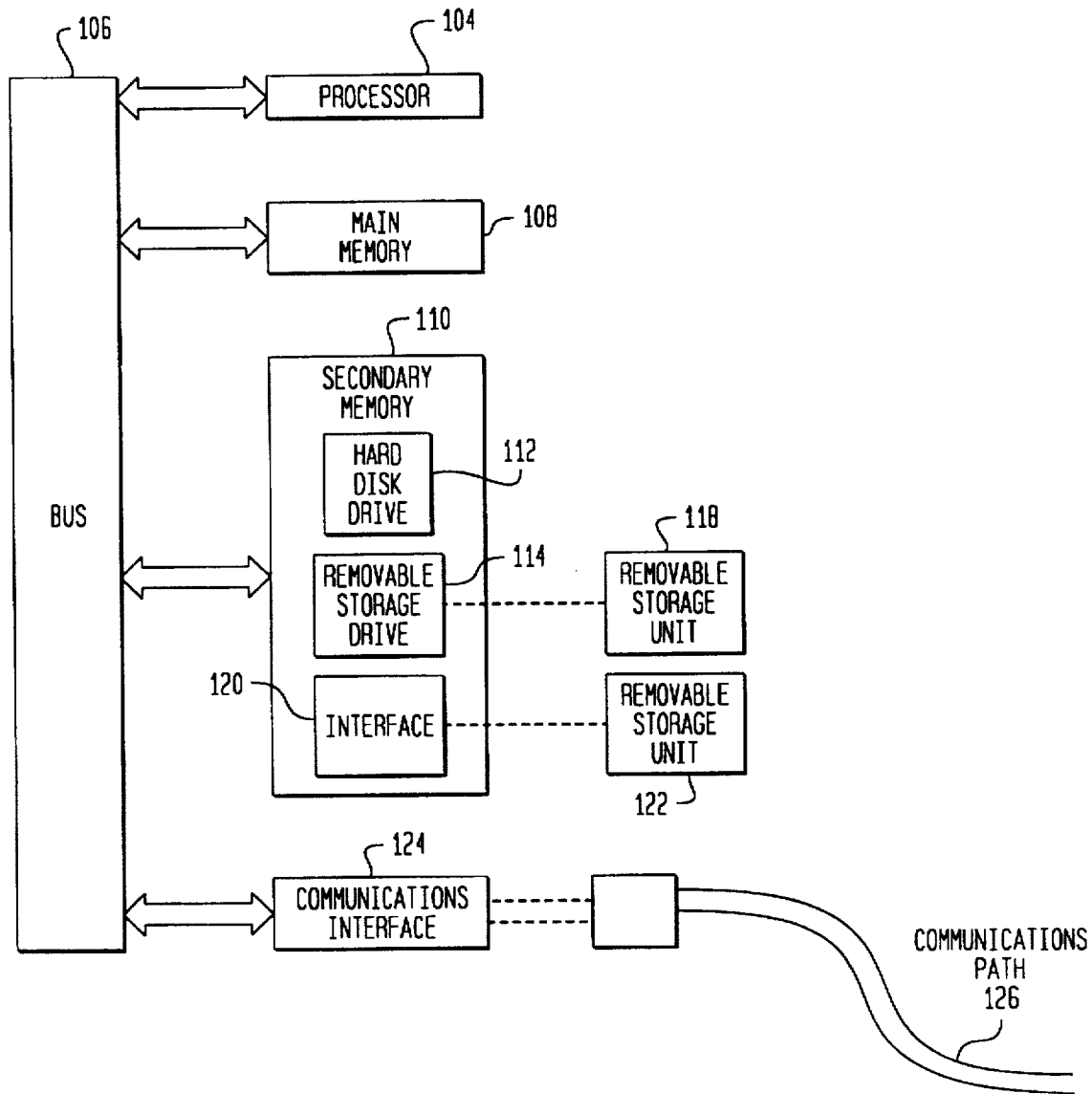


FIG. 2

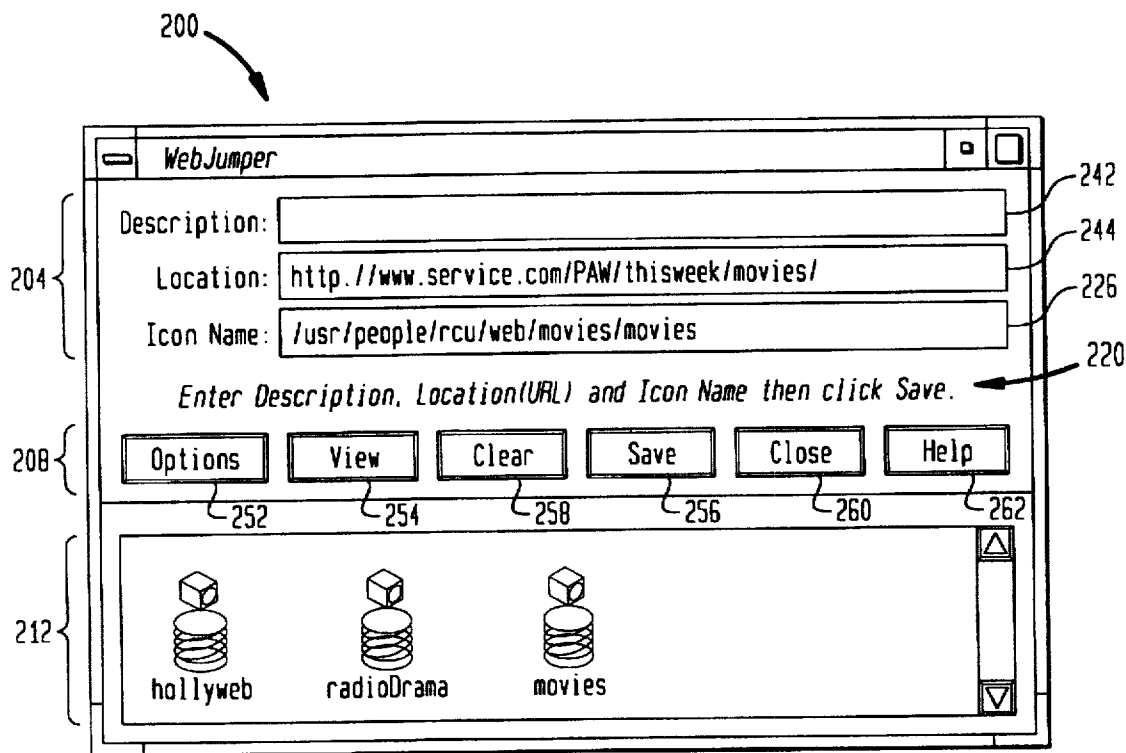


FIG. 3

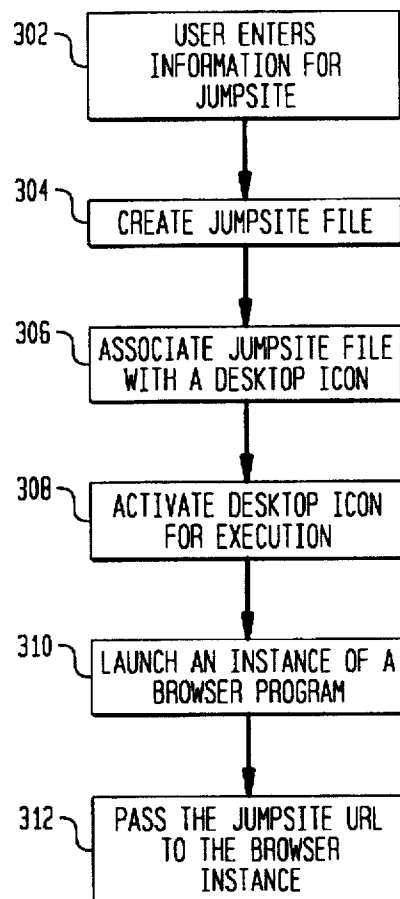
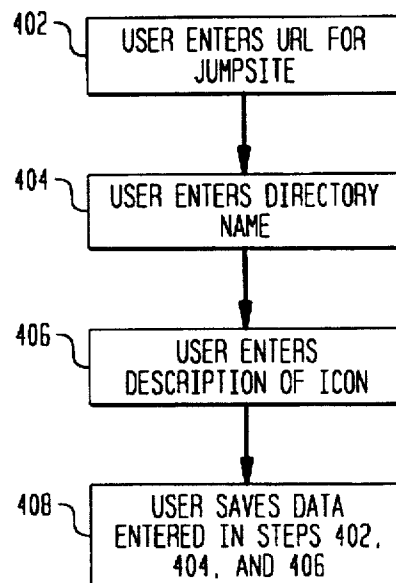


FIG. 4



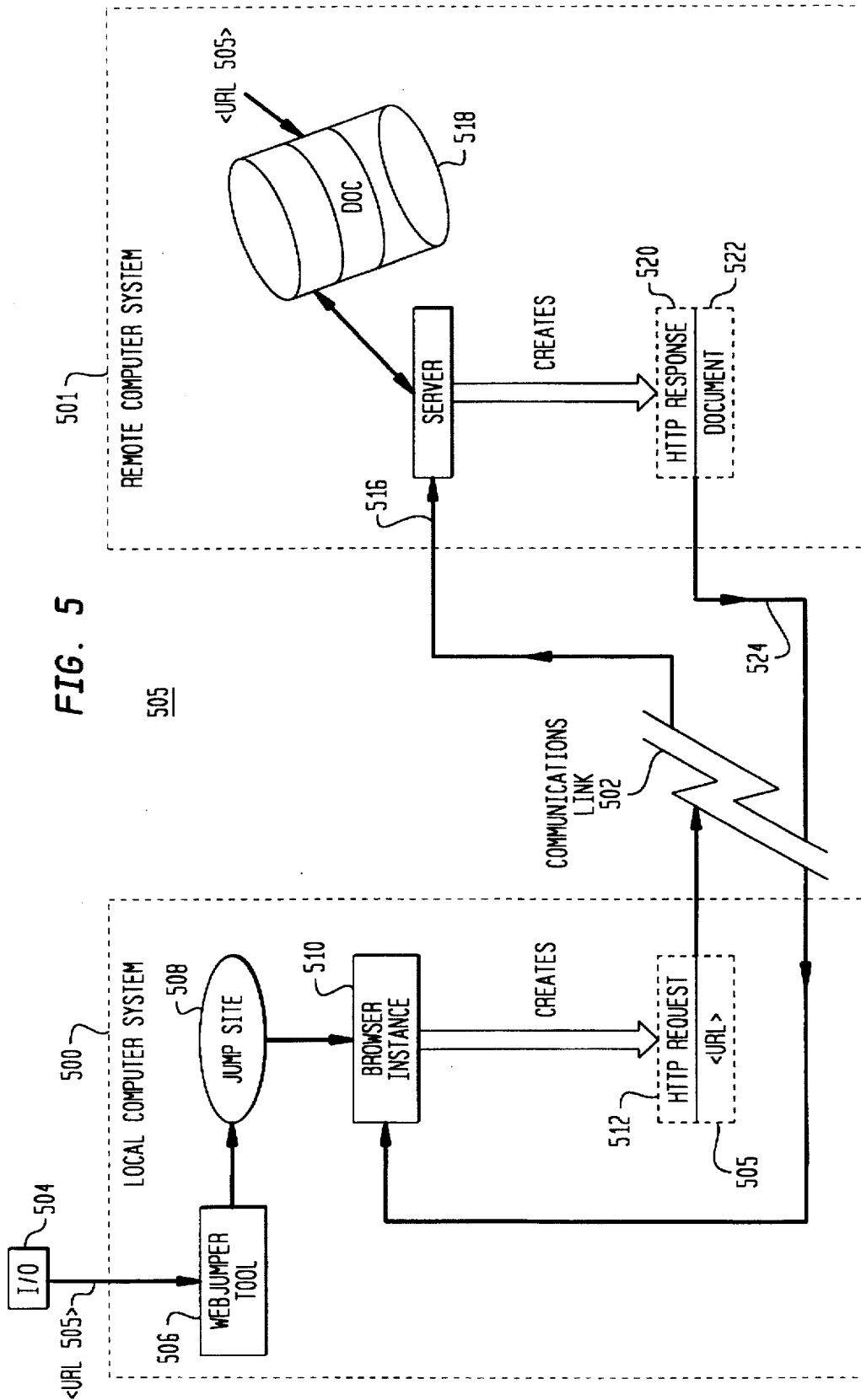


FIG. 5

505

Explore Litigation Insights

Docket Alarm provides insights to develop a more informed litigation strategy and the peace of mind of knowing you're on top of things.

Real-Time Litigation Alerts



Keep your litigation team up-to-date with **real-time alerts** and advanced team management tools built for the enterprise, all while greatly reducing PACER spend.

Our comprehensive service means we can handle Federal, State, and Administrative courts across the country.

Advanced Docket Research



With over 230 million records, Docket Alarm's cloud-native docket research platform finds what other services can't. Coverage includes Federal, State, plus PTAB, TTAB, ITC and NLRB decisions, all in one place.

Identify arguments that have been successful in the past with full text, pinpoint searching. Link to case law cited within any court document via Fastcase.

Analytics At Your Fingertips



Learn what happened the last time a particular judge, opposing counsel or company faced cases similar to yours.

Advanced out-of-the-box PTAB and TTAB analytics are always at your fingertips.

API

Docket Alarm offers a powerful API (application programming interface) to developers that want to integrate case filings into their apps.

LAW FIRMS

Build custom dashboards for your attorneys and clients with live data direct from the court.

Automate many repetitive legal tasks like conflict checks, document management, and marketing.

FINANCIAL INSTITUTIONS

Litigation and bankruptcy checks for companies and debtors.

E-DISCOVERY AND LEGAL VENDORS

Sync your system to PACER to automate legal marketing.