



US 20140106793A1

(19) **United States**

(12) **Patent Application Publication**

Lee et al.

(10) **Pub. No.: US 2014/0106793 A1**

(43) **Pub. Date: Apr. 17, 2014**

(54) **METHOD AND APPARATUS FOR EFFICIENTLY PERFORMING PAGING IN A WIRELESS ACCESS SYSTEM THAT SUPPORTS A MULTI-RADIO ACCESS TECHNOLOGY**

(75) Inventors: **Eunjong Lee**, Anyang-si (KR); **Youngsoo Yuk**, Anyang-si (KR); **Heejeong Cho**, Anyang-si (KR)

(73) Assignee: **LG ELECTRONICS INC.**, Seoul (KR)

(21) Appl. No.: **14/117,325**

(22) PCT Filed: **May 25, 2012**

(86) PCT No.: **PCT/KR2012/004165**

§ 371 (c)(1),

(2), (4) Date: **Nov. 12, 2013**

**Related U.S. Application Data**

(60) Provisional application No. 61/489,697, filed on May 25, 2011, provisional application No. 61/508,052, filed on Jul. 14, 2011.

**Publication Classification**

(51) **Int. Cl.**  
*H04W 68/00* (2006.01)  
(52) **U.S. Cl.**  
CPC ..... *H04W 68/00* (2013.01)  
USPC ..... **455/458**

(57) **ABSTRACT**

According to a first embodiment disclosed in the present description, a method for receiving a paging message of a first base station by a terminal which can transceive data to/from the first base station that supports a first radio access technology (RAT) and a second base station that supports a second radio access technology, in a wireless access system that supports a multi-radio access technology, comprises the steps of: establishing a connection to the first base station; receiving, from the first base station, a second base station connection command message including a paging message transmission indication; establishing a connection to the second base station in response to the second base station connection command message; and monitoring a paging message of the first base station on the basis of the paging message transmission indication using either the first base station or the second base station.

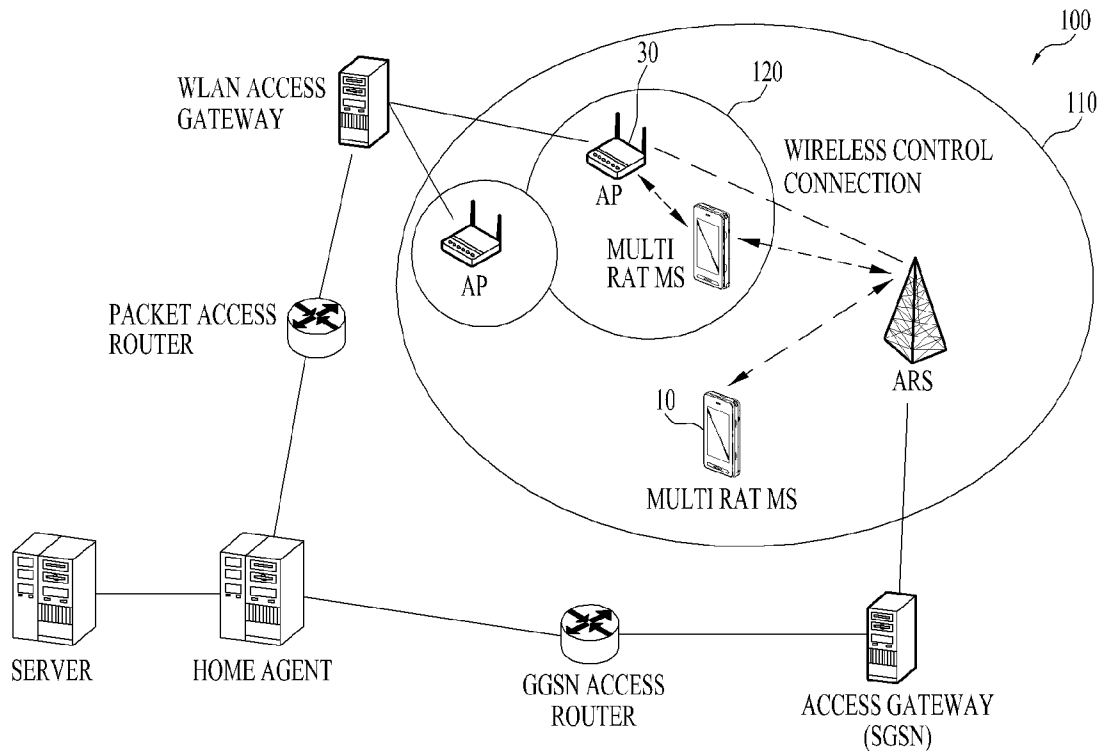


FIG. 1A

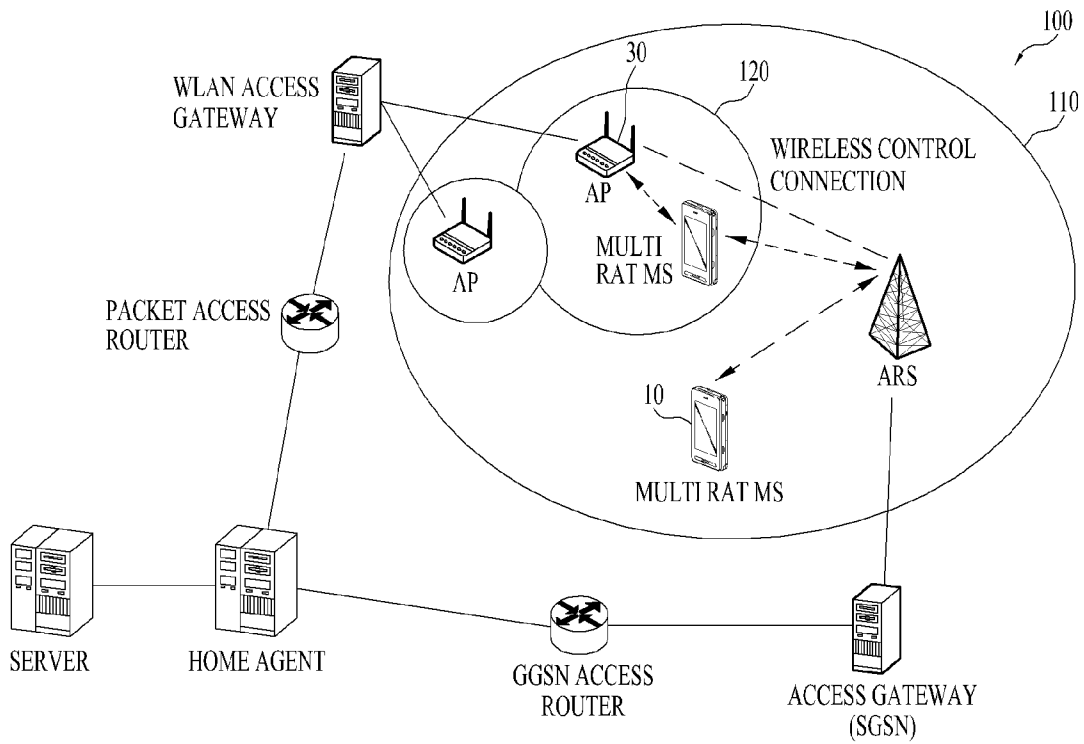


FIG. 1B

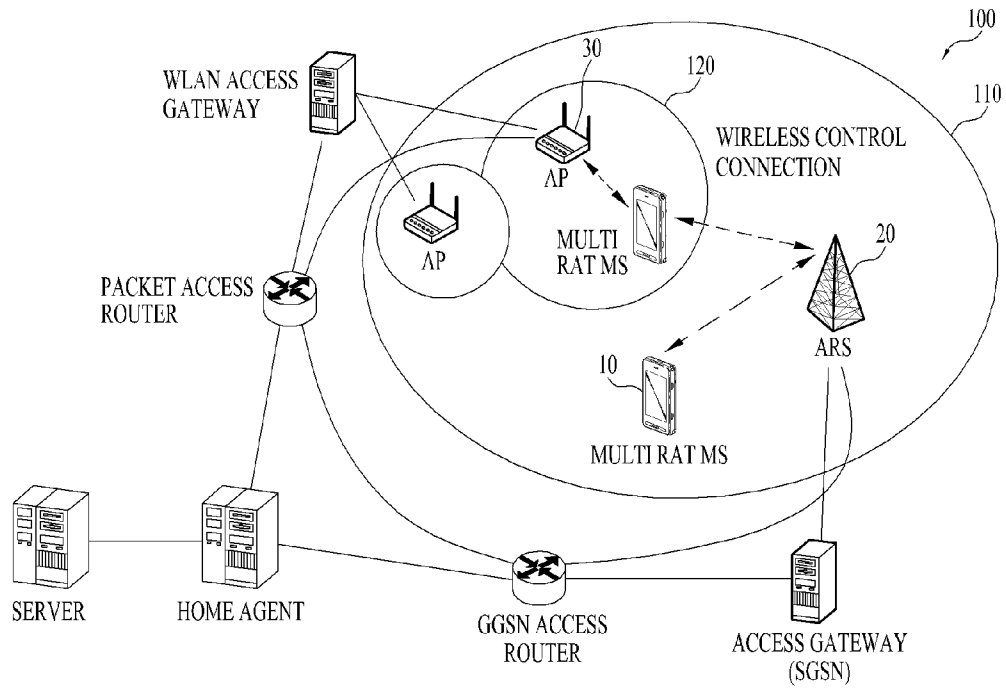


FIG. 2

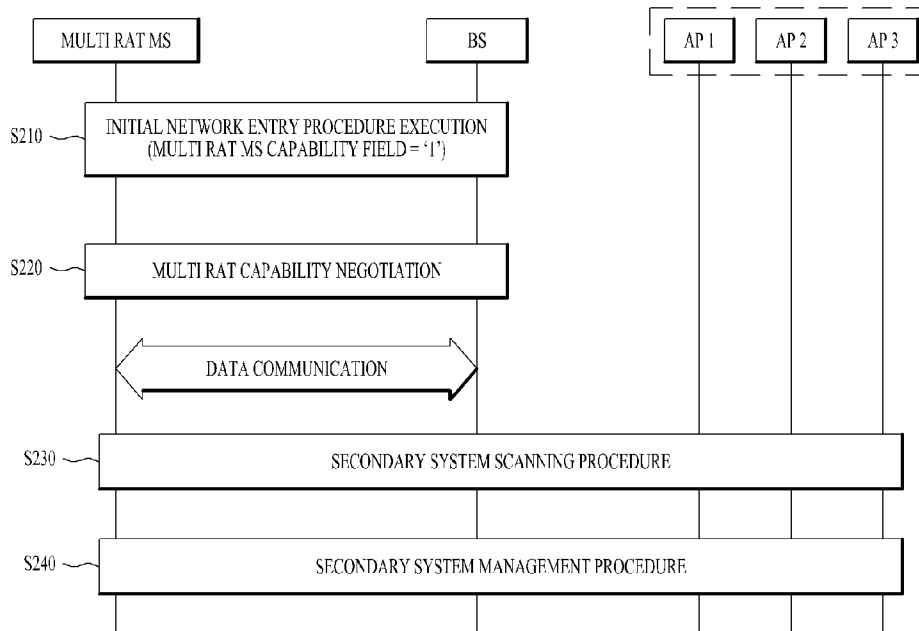


FIG. 3

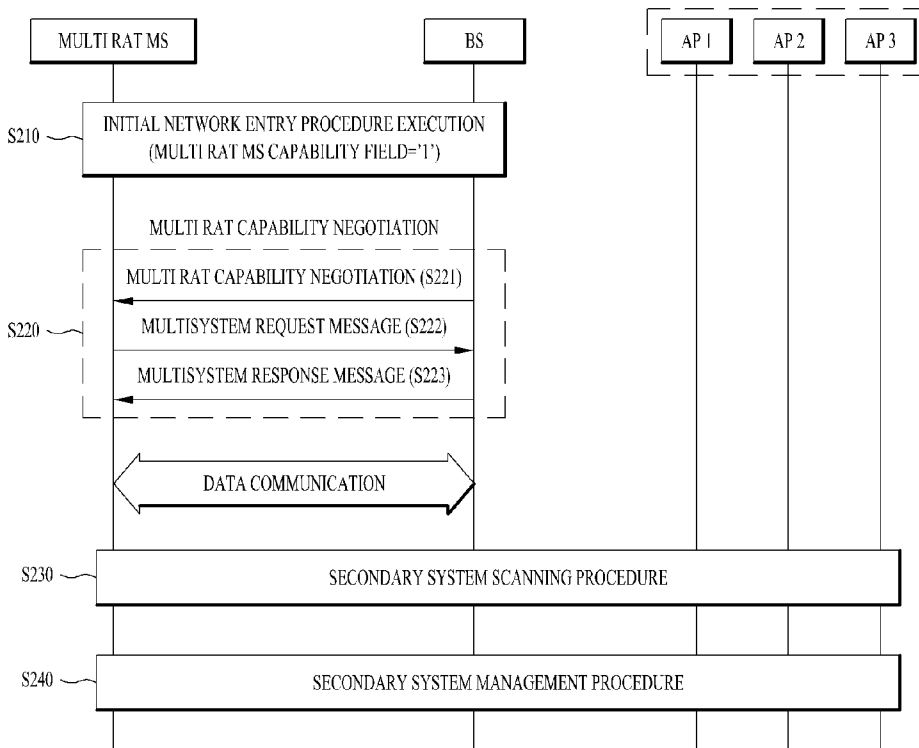
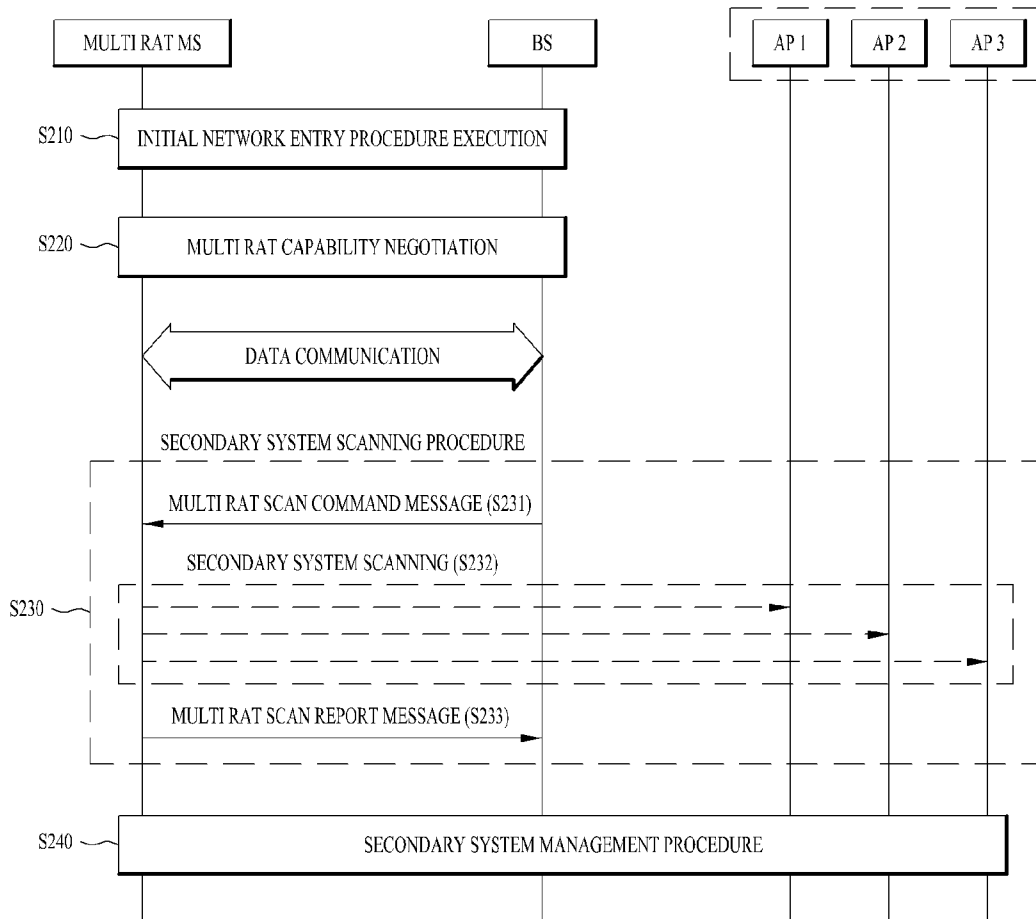


FIG. 4



# Explore Litigation Insights

Docket Alarm provides insights to develop a more informed litigation strategy and the peace of mind of knowing you're on top of things.

## Real-Time Litigation Alerts



Keep your litigation team up-to-date with **real-time alerts** and advanced team management tools built for the enterprise, all while greatly reducing PACER spend.

Our comprehensive service means we can handle Federal, State, and Administrative courts across the country.

## Advanced Docket Research



With over 230 million records, Docket Alarm's cloud-native docket research platform finds what other services can't. Coverage includes Federal, State, plus PTAB, TTAB, ITC and NLRB decisions, all in one place.

Identify arguments that have been successful in the past with full text, pinpoint searching. Link to case law cited within any court document via Fastcase.

## Analytics At Your Fingertips



Learn what happened the last time a particular judge, opposing counsel or company faced cases similar to yours.

Advanced out-of-the-box PTAB and TTAB analytics are always at your fingertips.

## API

Docket Alarm offers a powerful API (application programming interface) to developers that want to integrate case filings into their apps.

## LAW FIRMS

Build custom dashboards for your attorneys and clients with live data direct from the court.

Automate many repetitive legal tasks like conflict checks, document management, and marketing.

## FINANCIAL INSTITUTIONS

Litigation and bankruptcy checks for companies and debtors.

## E-DISCOVERY AND LEGAL VENDORS

Sync your system to PACER to automate legal marketing.