



US 20130291088A1

(19) **United States**

(12) **Patent Application Publication**
Shieh et al.

(10) **Pub. No.: US 2013/0291088 A1**

(43) **Pub. Date: Oct. 31, 2013**

(54) **COOPERATIVE NETWORK SECURITY INSPECTION**

(52) **U.S. Cl.**
CPC *H04L 63/0218* (2013.01); *H04L 63/0263* (2013.01)

(71) Applicants: **Choung-Yaw Michael Shieh**, Palo Alto, CA (US); **Meng Xu**, Los Altos, CA (US); **Yi Sun**, San Jose, CA (US); **Jia-Jyi Roger Lian**, Saratoga, CA (US)

USPC **726/11**

(72) Inventors: **Choung-Yaw Michael Shieh**, Palo Alto, CA (US); **Meng Xu**, Los Altos, CA (US); **Yi Sun**, San Jose, CA (US); **Jia-Jyi Roger Lian**, Saratoga, CA (US)

(57) **ABSTRACT**

(21) Appl. No.: **13/860,408**

A network system includes a security device and a network access device. The network access device is to receive a packet from a source node destined to a destination node, and to examine a data structure maintained by the network access device to determine whether the data structure stores a data member having a predetermined value, the data member indicating whether the packet should undergo security processing. If the data member matches the predetermined value, the packet is transmitted to a security device associated with the network access device to allow the security device to perform content inspection, and in response to a response received from the security device, the packet is routed to the destination node dependent upon the response. The packet is routed to the destination node without forwarding the packet to the security device.

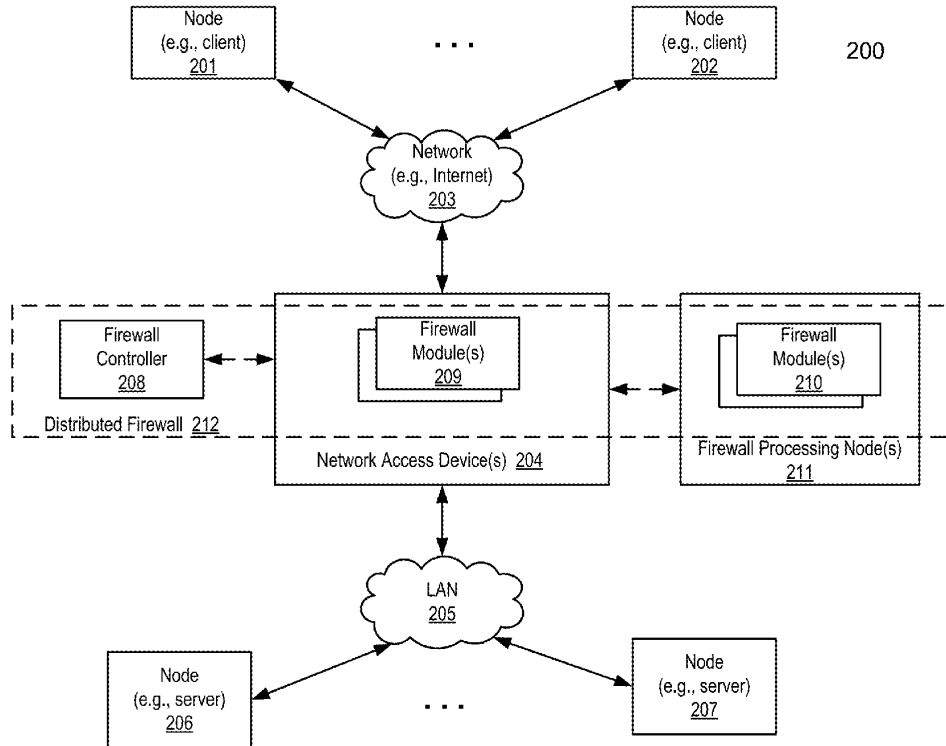
(22) Filed: **Apr. 10, 2013**

Related U.S. Application Data

(60) Provisional application No. 61/686,828, filed on Apr. 11, 2012.

Publication Classification

(51) **Int. Cl.**
H04L 29/06 (2006.01)



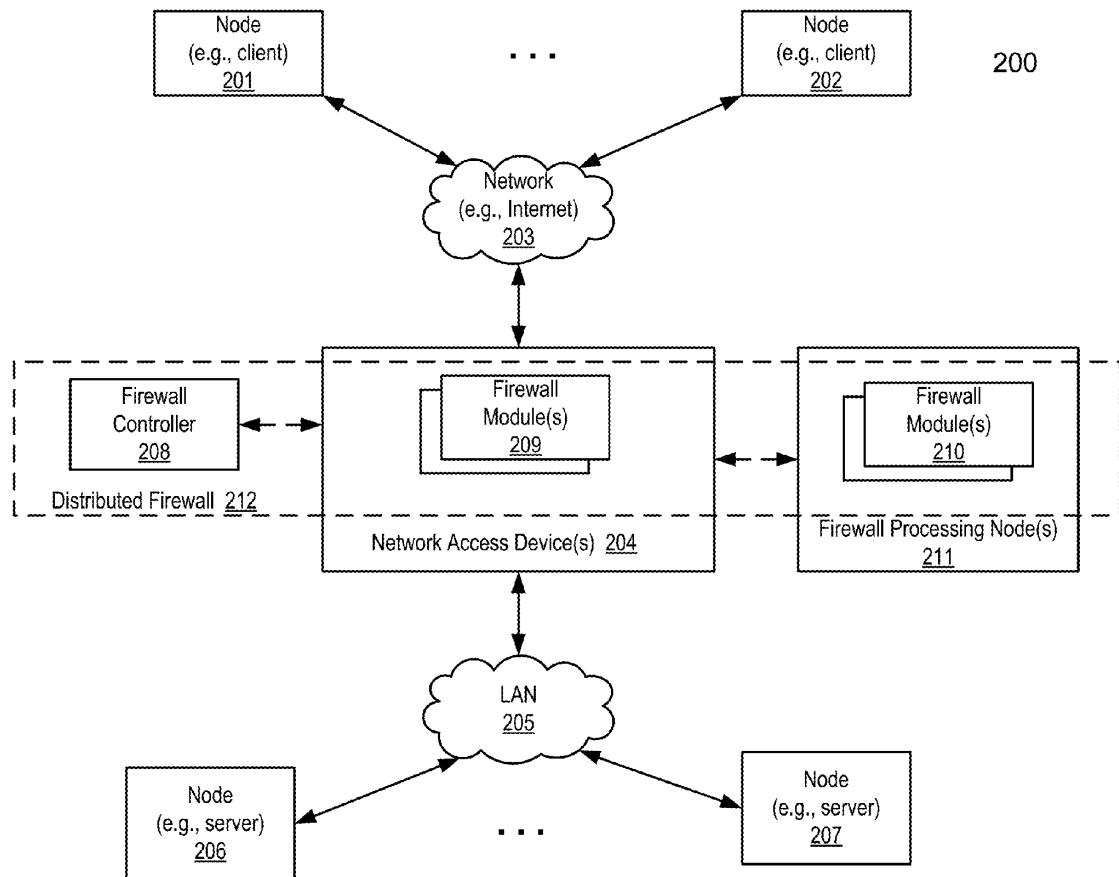


FIG. 1

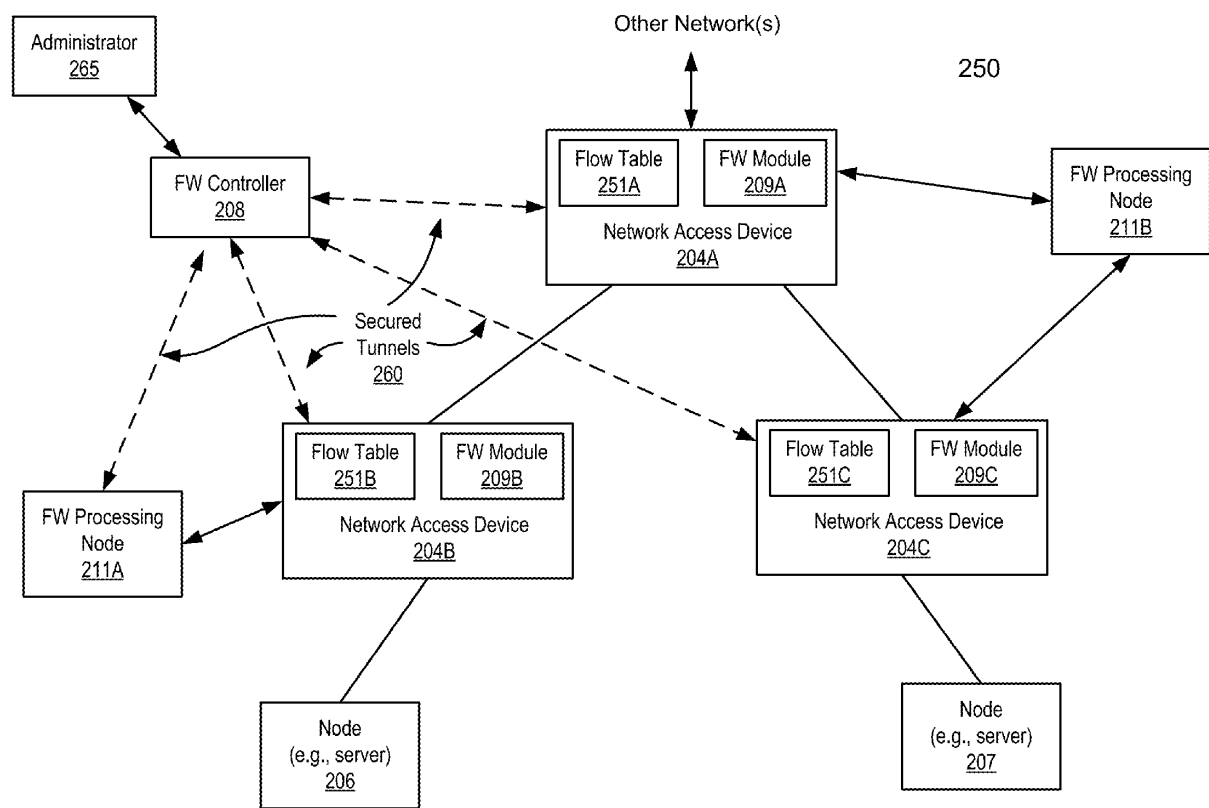


FIG. 2A

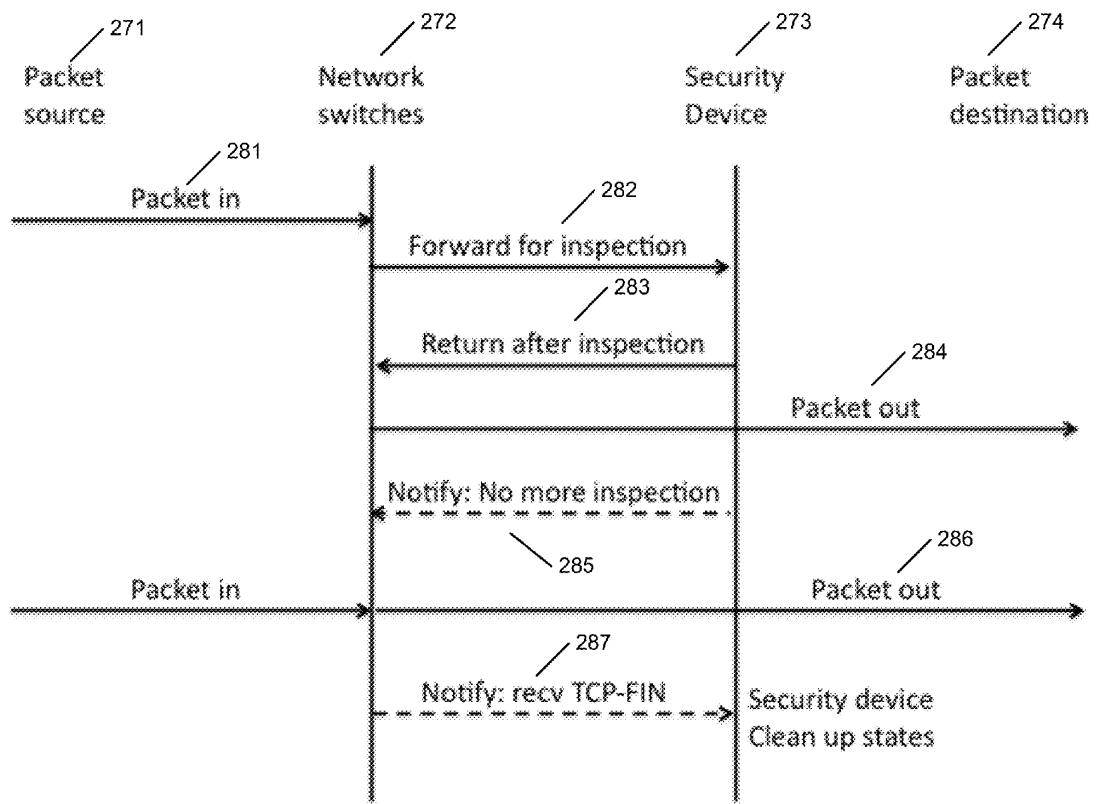


FIG. 2B

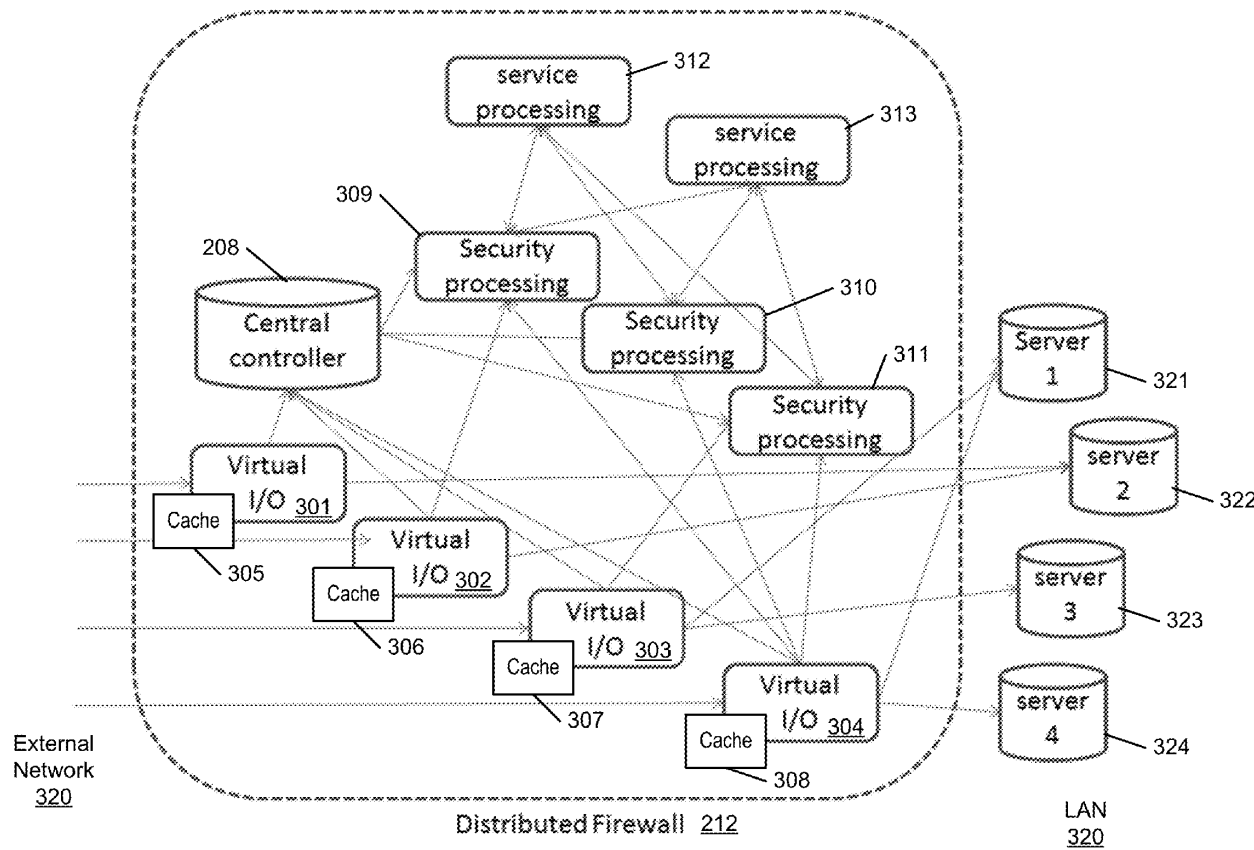


FIG. 3

Explore Litigation Insights

Docket Alarm provides insights to develop a more informed litigation strategy and the peace of mind of knowing you're on top of things.

Real-Time Litigation Alerts



Keep your litigation team up-to-date with **real-time alerts** and advanced team management tools built for the enterprise, all while greatly reducing PACER spend.

Our comprehensive service means we can handle Federal, State, and Administrative courts across the country.

Advanced Docket Research



With over 230 million records, Docket Alarm's cloud-native docket research platform finds what other services can't. Coverage includes Federal, State, plus PTAB, TTAB, ITC and NLRB decisions, all in one place.

Identify arguments that have been successful in the past with full text, pinpoint searching. Link to case law cited within any court document via Fastcase.

Analytics At Your Fingertips



Learn what happened the last time a particular judge, opposing counsel or company faced cases similar to yours.

Advanced out-of-the-box PTAB and TTAB analytics are always at your fingertips.

API

Docket Alarm offers a powerful API (application programming interface) to developers that want to integrate case filings into their apps.

LAW FIRMS

Build custom dashboards for your attorneys and clients with live data direct from the court.

Automate many repetitive legal tasks like conflict checks, document management, and marketing.

FINANCIAL INSTITUTIONS

Litigation and bankruptcy checks for companies and debtors.

E-DISCOVERY AND LEGAL VENDORS

Sync your system to PACER to automate legal marketing.