

ABOUT ORCKIT-CORRIGENT

Executive Summary

Orckit-Corrigent (Nasdaq: ORCT) facilitates the delivery of TDM migration, carrier Ethernet residential and enterprise applications and mobile backhauling for telecommunication providers around the world. The company was founded in 1990 and is headquartered in Tel Aviv, Israel and has more than 200 employees across America, Western and Eastern Europe and APAC.

Orckit-Corrigent has been supplying networking infrastructure solutions for metro aggregation networks since 2000. In 2004, the first generation of its residential, enterprise, and mobile solutions was selected for large scale deployment by KDDI - a Tier-1 service provider in Japan.

Today, the company's next-generation products, introduced to the market in 2008, serve numerous service providers worldwide, including Indian incumbent BSNL, German Media Broadcast, European Tele2 and its subsidiaries, Mexican MetroNet, and others.

Orckit-Corrigent's Packet Transport Network (PTN) solution, led by its CM-4000 line of products, includes standard and interoperable MPLS and MPLS-TP switches with a wide set of transport features, enabling advanced packet, as well as legacy services, over packet transport networks.

The CM-4000 provides solutions for the rapidly growing Packet Transport market. Orckit-Corrigent's products enable all types of telecom services, including enterprise Ethernet VPN, residential triple-play, and mobile backhauling over a unified networking infrastructure in metro area networks.

Additionally, the products enable any type of Ethernet services as well as any rate of TDM service (from PDH to SDH) over packet, using a dense mixture of Ethernet and PDH/SDH interfaces. The usage of standard circuit emulation and synchronization technologies ensures the smooth migration of legacy TDM services and infrastructure to unified MPLS and MPLS-TP packet networks, providing a scalable, future proof, and cost optimized alternative for the very large MSPP installed base.

The company's transport-class CM-View is a unified and scalable service oriented management system with graphical point and click provisioning, multilayer OAM functionality, and full FCAPS support, allowing for the quick roll-out of next generation services, simplifying the network operation and reducing operational costs.



CM-4314

CM-4206

CM-4000

- SDH and PDH over packet
- MPLS and MPLS-TP
- 100 Gigabit Ethernet



CM-4140

- SDH and PDH over packet
- MPLS and MPLS-TP



CM-4011

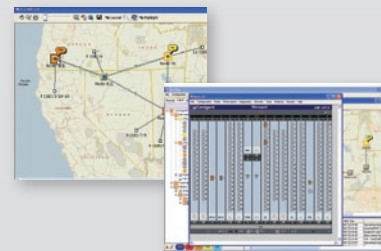


CM-4012



CM-4013

CM-401X PTN access Products



CM-View Network Management System



For more information contact info@orckit.com

Orckit Exhibit 2012



**DOCKET
ALARM**

Find authenticated court documents without watermarks at docketalarm.com.