

(19) **United States**

(12) **Patent Application Publication** (10) **Pub. No.: US 2003/0147400 A1**

Devi (43) **Pub. Date: Aug. 7, 2003**

(54) **OPTIMIZING PATH SELECTION FOR MULTIPLE SERVICE CLASSES IN A NETWORK**

(22) Filed: **Feb. 1, 2002**

Publication Classification

(75) Inventor: **Bharathi B. Devi, Plano, TX (US)**

(51) **Int. Cl.⁷ H04L 12/56**

(52) **U.S. Cl. 370/395.21; 370/351; 370/395.43**

Correspondence Address:

BAKER BOTTS L.L.P.

2001 ROSS AVENUE

SUITE 600

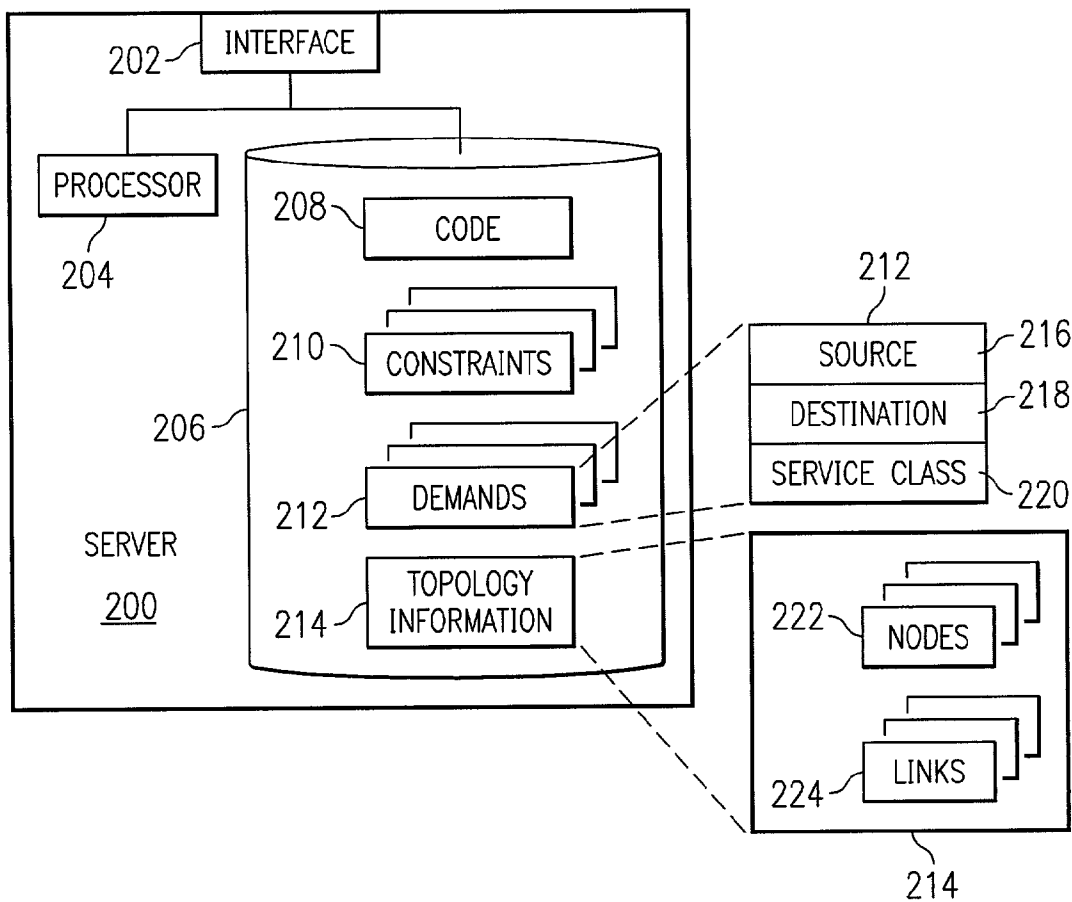
DALLAS, TX 75201-2980 (US)

(57) **ABSTRACT**

A method for routing traffic in a network includes determining topology information for the network and determining traffic demands for multiple service classes. The method further includes determining an objective function for an optimization problem using the topology information and demands, and determining a solution to that specifies a network path for each demand.

(73) Assignee: **Fujitsu Network Communications, Inc.**

(21) Appl. No.: **10/061,426**



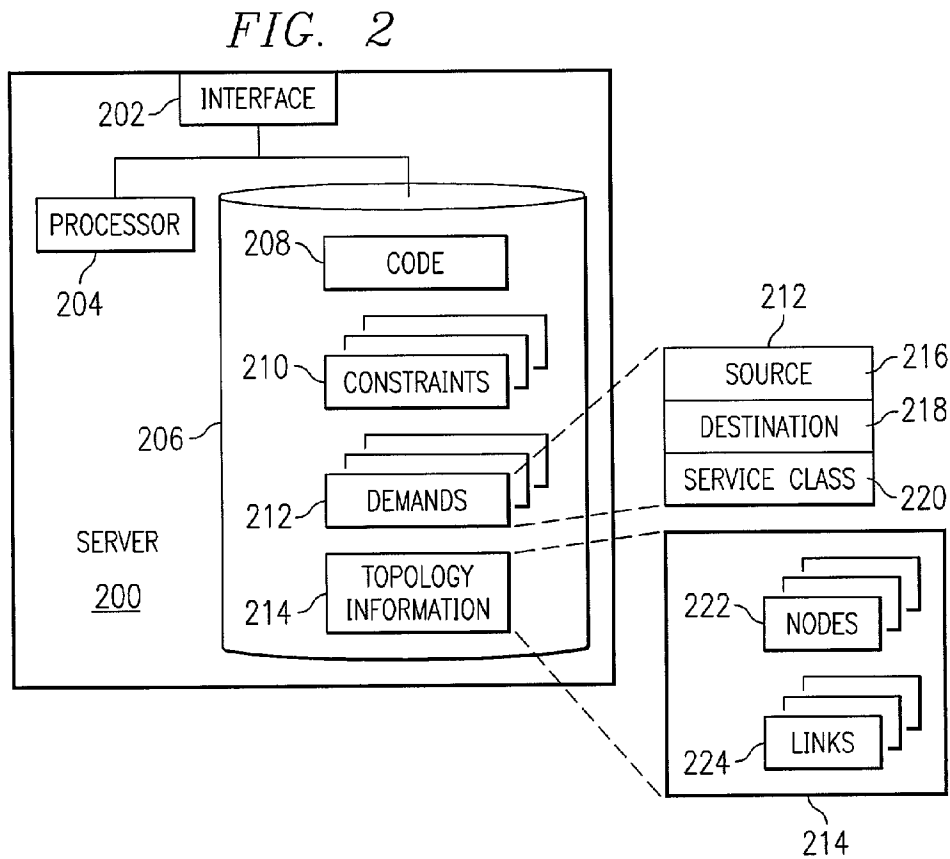
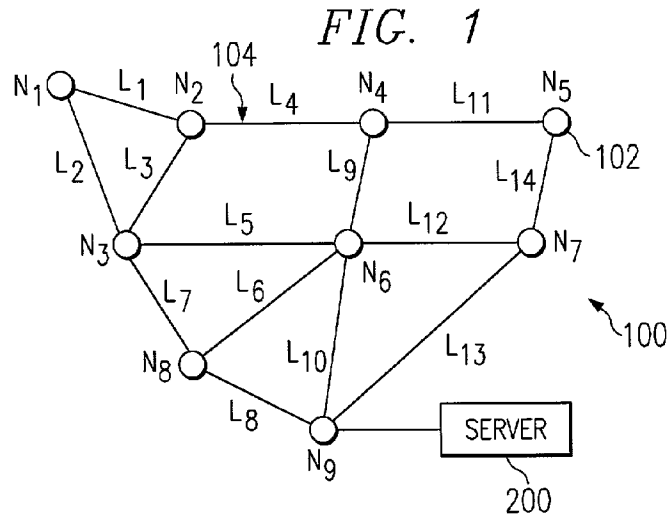


FIG. 3

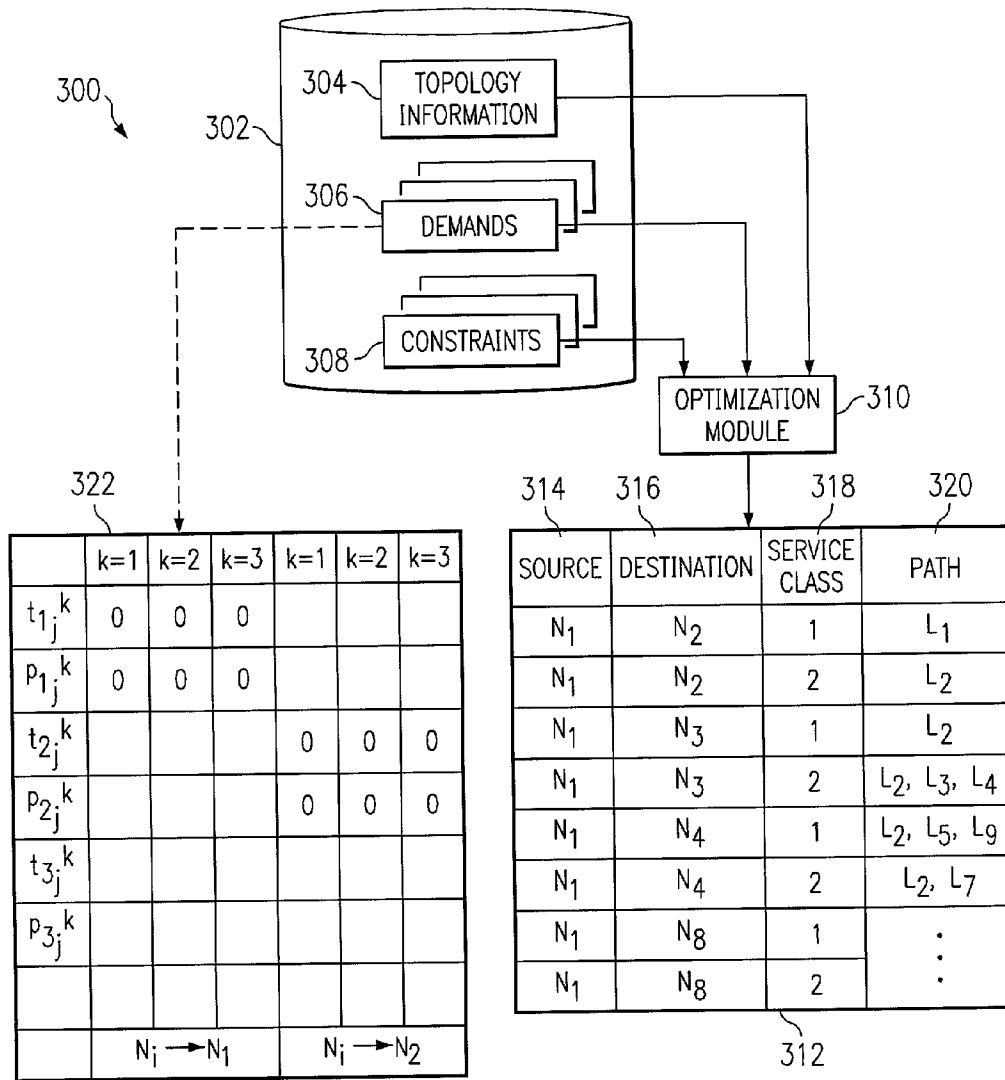
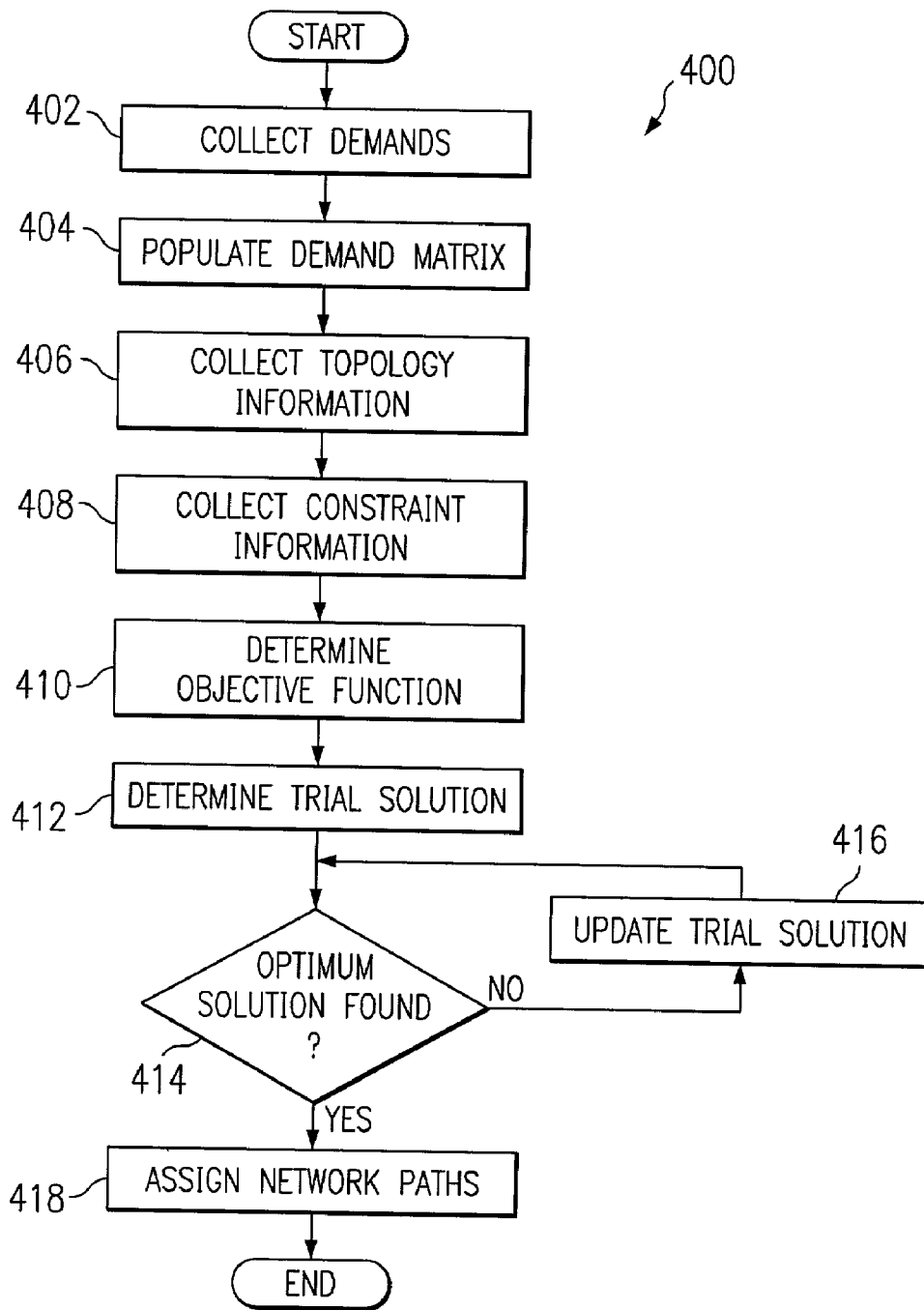


FIG. 4



OPTIMIZING PATH SELECTION FOR MULTIPLE SERVICE CLASSES IN A NETWORK

TECHNICAL FIELD OF THE INVENTION

[0001] This invention relates in general to telecommunications, and more particularly to a method and system for optimizing path selection for multiple service classes in a network.

BACKGROUND OF THE INVENTION

[0002] Telecommunication systems continue to carry more and different kinds of traffic over their networks. Certain types of traffic require a high degree of reliability, so that few or no packets are lost in transit. Other types of traffic may be sensitive to timing, so that some packets may be lost, but the packets that are received need to arrive on time. Furthermore, some traffic may be order sensitive, while other traffic may be communicated asynchronously. As demand increases, telecommunication systems must adapt to handle increasing amounts and types of traffic.

SUMMARY OF THE INVENTION

[0003] In accordance with the present invention, a method and system for optimizing network path selection for multiple service classes in a network is disclosed. In accordance with the present invention, the disadvantages and problems associated with previous methods of optimization have been substantially reduced or eliminated. In particular, certain embodiments of the present invention have the advantage of allowing simultaneous optimization for several service classes.

[0004] In accordance with one embodiment of the present invention, a method for routing traffic in a network includes determining topology information for a network and determining demands for multiple service classes. The method further includes determining an objective function using the topology information and the demands, and determining a solution that specifies a network path for each demand using the objective function.

[0005] In accordance with another embodiment of the present invention, a server includes a memory and a processor. The memory stores topology information of a network along with traffic demands for multiple service classes. The processor determines an objective function for an optimization problem using the topology information and the demands, determines a solution to the optimization problem, and determines a network path for each demand using the solution.

[0006] Technical advantages of certain embodiments of the present invention include load balancing. The objective function may include a load balancing term so that the optimization accounts for load balancing among many links. This results in a more uniform distribution of traffic among links, thus providing more efficient use of network resources.

[0007] Other technical advantages of certain embodiments of the present invention include less dependency on individual links. Unlike previous systems that always direct traffic to the shortest available path, certain embodiments of the present invention allow more flexible path determination including multiple alternative routes. Thus, when a link fails,

the traffic can often be redirected more easily, and less traffic overall is disrupted by the link failure.

[0008] Additional technical advantages of certain embodiments of the present invention include automatic fail-over path determination. Certain embodiments of the present invention include detection of component failure in the network and automatic recalculation of network paths in response to the failure. This allows quick recovery from component failure. Particular embodiments of the invention may include some, all or none of the enumerated technical advantages. These and other technical advantages of certain embodiments of the present invention will be apparent from the following figures, description and claims.

BRIEF DESCRIPTION OF THE DRAWINGS

[0009] For a more complete understanding of the present invention and its advantages, reference is now made to the following description, taken in conjunction with the accompanying drawings, in which:

[0010] **FIG. 1** illustrates a network including nodes, links, and an optimization server;

[0011] **FIG. 2** illustrates the optimization server of **FIG. 1** in more detail;

[0012] **FIG. 3** illustrates conceptually a method in accordance with the present invention for providing optimum path selection in a network; and

[0013] **FIG. 4** is a flow chart illustrating the steps of a method for optimizing path selection in a network.

DETAILED DESCRIPTION OF THE INVENTION

[0014] **FIG. 1** illustrates a network **100** that includes nodes **102**, links **104**, and an optimization server **200** that assigns paths between nodes **102** in network **100**. "Nodes" refer to any hardware and/or software that sends and/or receives information in network. Nodes **102** may include switches, endpoints, routers, servers, clients, or any other suitable network component. Nodes **102** are denoted by "N", and numbered by subscripts. A "circuit" refers to any connection between a node **102** that is the source of information and a node **102** that is the final destination of the information. A "path" refers to the series of links **104** in a circuit.

[0015] Links **104** represent any physical and/or logical connection between nodes **102**. Links **104** may include cables, fiber optics, wireless links, or any other suitable method for communicating information between nodes **102**. A single logical link **104** may represent more than one physical link, in which case the logical link **104** is known as an "aggregated link." Links are denoted by "L", and numbered with subscripts.

[0016] Optimization server **200** performs various provisioning tasks including assigning circuits between nodes **102**. Server **200** represents any hardware and/or software configured to process information and perform tasks such as selecting circuits between nodes **102**, and communicating instructions to nodes **102** to send traffic to particular links **104**. Server **200** may communicate with one or all of nodes **102** using network **100**. Alternatively, server **200** may be an out-of-network server **200** that determines an optimal path

Explore Litigation Insights

Docket Alarm provides insights to develop a more informed litigation strategy and the peace of mind of knowing you're on top of things.

Real-Time Litigation Alerts



Keep your litigation team up-to-date with **real-time alerts** and advanced team management tools built for the enterprise, all while greatly reducing PACER spend.

Our comprehensive service means we can handle Federal, State, and Administrative courts across the country.

Advanced Docket Research



With over 230 million records, Docket Alarm's cloud-native docket research platform finds what other services can't. Coverage includes Federal, State, plus PTAB, TTAB, ITC and NLRB decisions, all in one place.

Identify arguments that have been successful in the past with full text, pinpoint searching. Link to case law cited within any court document via Fastcase.

Analytics At Your Fingertips



Learn what happened the last time a particular judge, opposing counsel or company faced cases similar to yours.

Advanced out-of-the-box PTAB and TTAB analytics are always at your fingertips.

API

Docket Alarm offers a powerful API (application programming interface) to developers that want to integrate case filings into their apps.

LAW FIRMS

Build custom dashboards for your attorneys and clients with live data direct from the court.

Automate many repetitive legal tasks like conflict checks, document management, and marketing.

FINANCIAL INSTITUTIONS

Litigation and bankruptcy checks for companies and debtors.

E-DISCOVERY AND LEGAL VENDORS

Sync your system to PACER to automate legal marketing.