

(19) **United States**

(12) **Patent Application Publication** (10) **Pub. No.: US 2004/0095946 A1**

**Baker**

(43) **Pub. Date: May 20, 2004**

(54) **LOGICAL STAR TOPOLOGIES FOR NON-STAR NETWORKS**

(76) Inventor: **Albert D. Baker**, Lincroft, NJ (US)

Correspondence Address:  
**MENDELSON AND ASSOCIATES PC**  
**1515 MARKET STREET**  
**SUITE 715**  
**PHILADELPHIA, PA 19102 (US)**

(21) Appl. No.: **10/298,704**

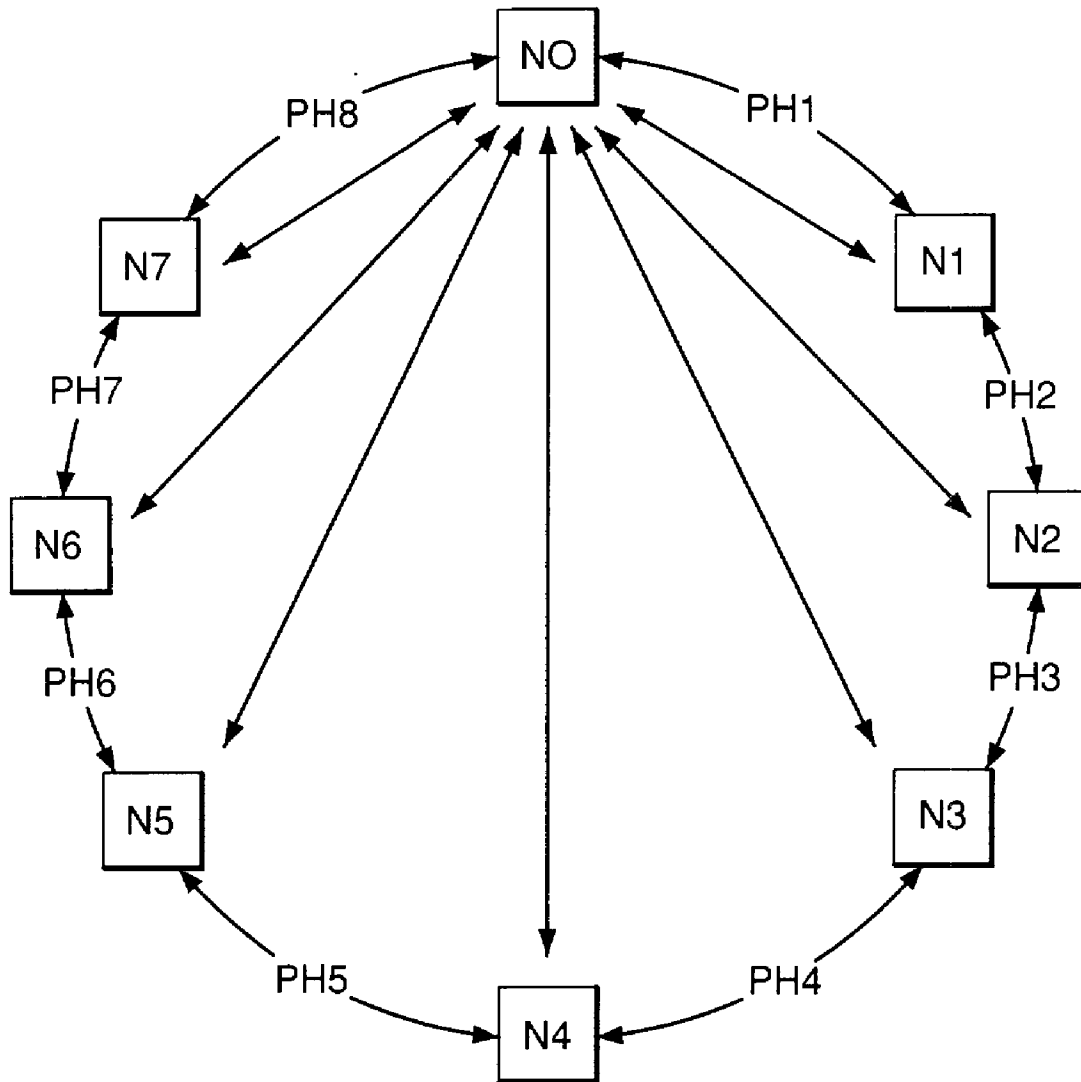
(22) Filed: **Nov. 18, 2002**

**Publication Classification**

(51) **Int. Cl.7** ..... **H04L 12/28**  
 (52) **U.S. Cl.** ..... **370/405; 370/258**

(57) **ABSTRACT**

A logical star architecture imposed on an underlying non-star network, for example a Virtual Path Ring (VPR), enhances a mesh protocol with an automatic method for Virtual Path ID (VPI) generation. The VPIs are used by the mesh protocol's inherent routing function to effect automatic configuration at installation, automatic reconfiguration at node updates, and automatic reconfiguration for protection switching. The imposition of the logical star architecture on a VPR reduces node-to-node switching costs (e.g., delay, as well as memory and processing costs) since all nodes in a logical star topology are at most two logical hops away. The logical star also conserves virtual path address space relative to a fully configured ring. Additionally, the imposition of the logical star architecture allows existing star functions to be deployed on the underlying network. Finally, when the underlying architecture is a ring, the protection advantages of ring networks can be preserved.



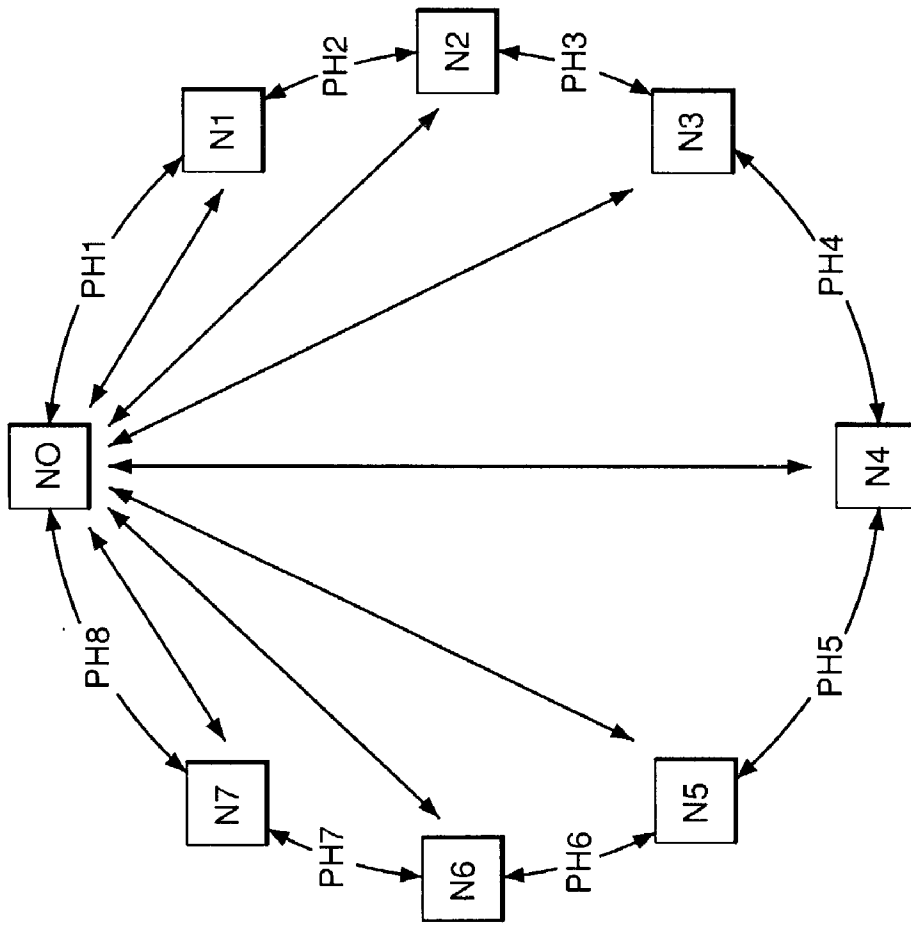


FIG. 1

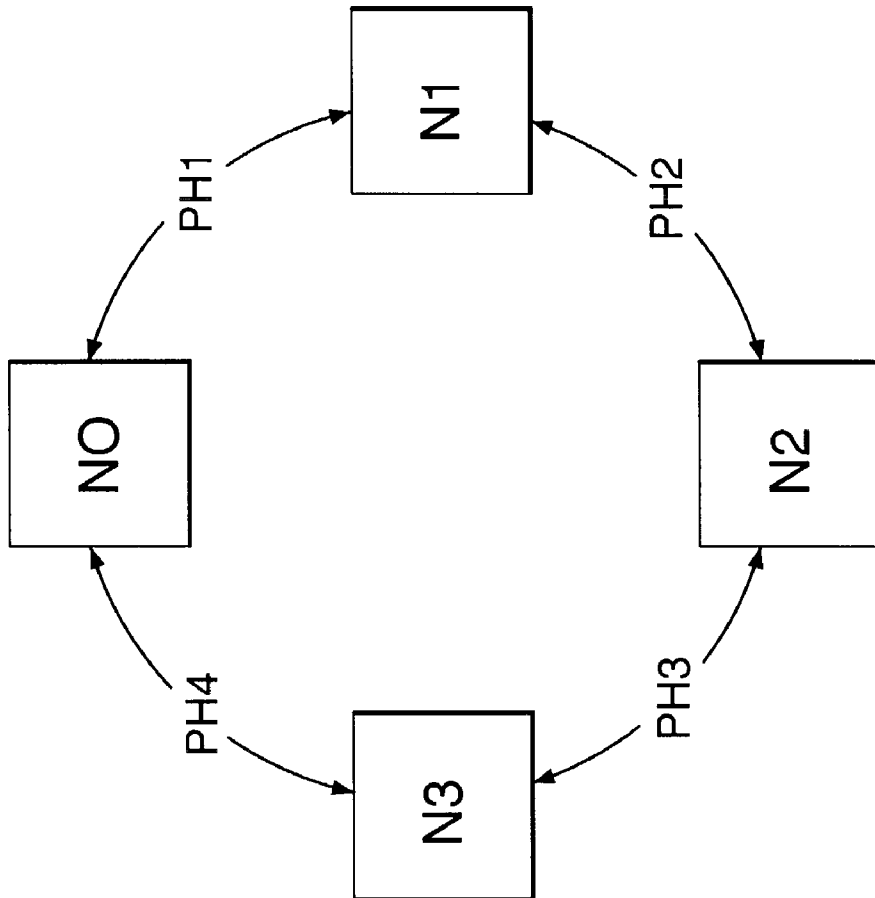


FIG. 2

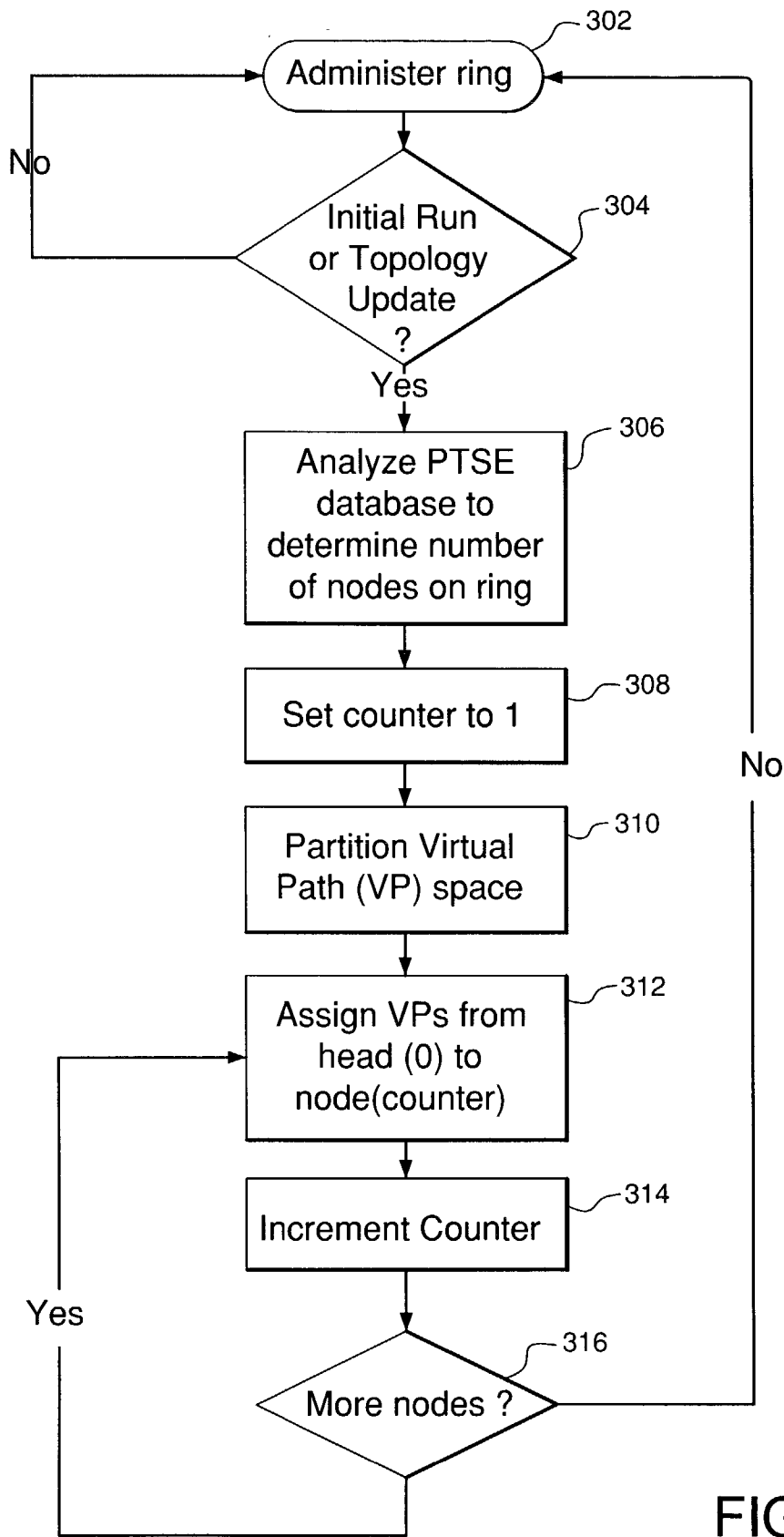


FIG. 3

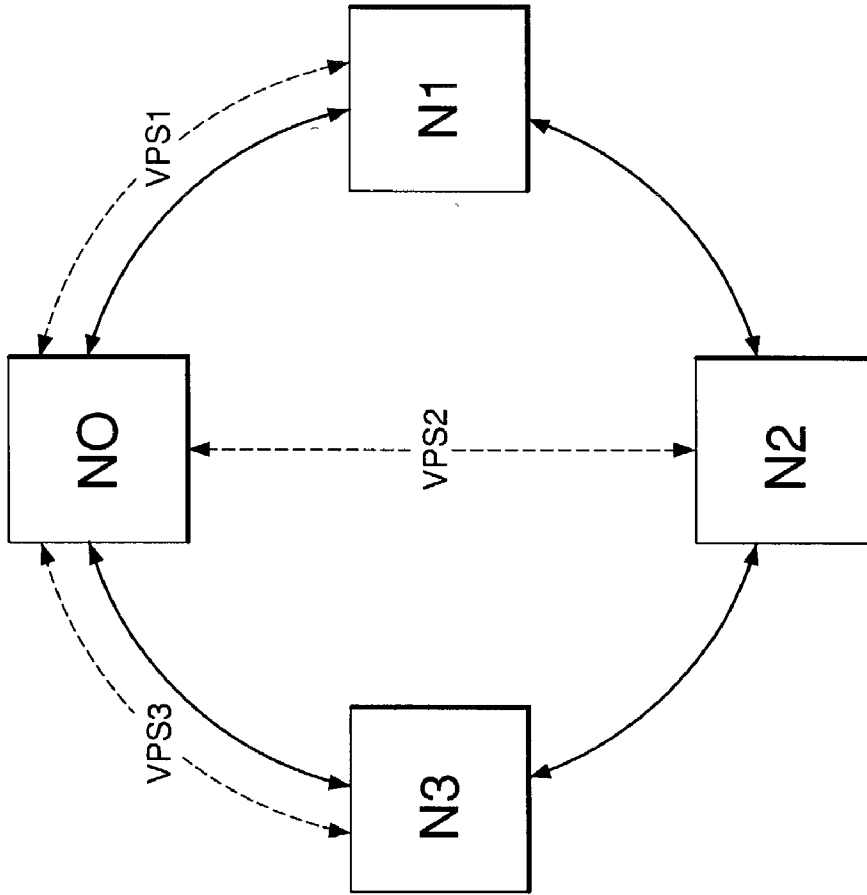


FIG. 4

# Explore Litigation Insights

Docket Alarm provides insights to develop a more informed litigation strategy and the peace of mind of knowing you're on top of things.

## Real-Time Litigation Alerts



Keep your litigation team up-to-date with **real-time alerts** and advanced team management tools built for the enterprise, all while greatly reducing PACER spend.

Our comprehensive service means we can handle Federal, State, and Administrative courts across the country.

## Advanced Docket Research



With over 230 million records, Docket Alarm's cloud-native docket research platform finds what other services can't. Coverage includes Federal, State, plus PTAB, TTAB, ITC and NLRB decisions, all in one place.

Identify arguments that have been successful in the past with full text, pinpoint searching. Link to case law cited within any court document via Fastcase.

## Analytics At Your Fingertips



Learn what happened the last time a particular judge, opposing counsel or company faced cases similar to yours.

Advanced out-of-the-box PTAB and TTAB analytics are always at your fingertips.

## API

Docket Alarm offers a powerful API (application programming interface) to developers that want to integrate case filings into their apps.

## LAW FIRMS

Build custom dashboards for your attorneys and clients with live data direct from the court.

Automate many repetitive legal tasks like conflict checks, document management, and marketing.

## FINANCIAL INSTITUTIONS

Litigation and bankruptcy checks for companies and debtors.

## E-DISCOVERY AND LEGAL VENDORS

Sync your system to PACER to automate legal marketing.