

[54] **RESOURCE ALLOCATION METHOD FOR INTERACTIVE TELEVIDEO SYSTEM**

[75] Inventor: **Frank A. Lawler**, Seattle, Wash.

[73] Assignee: **Microsoft Corporation**, Redmond, Wash.

[21] Appl. No.: **08/521,359**

[22] Filed: **Aug. 31, 1995**

[51] **Int. Cl.<sup>6</sup>** ..... **H04N 7/14**

[52] **U.S. Cl.** ..... **348/7; 398/200.47**

[58] **Field of Search** ..... **348/7, 6, 12, 13; 395/200.09, 200.47**

[56] **References Cited**

**U.S. PATENT DOCUMENTS**

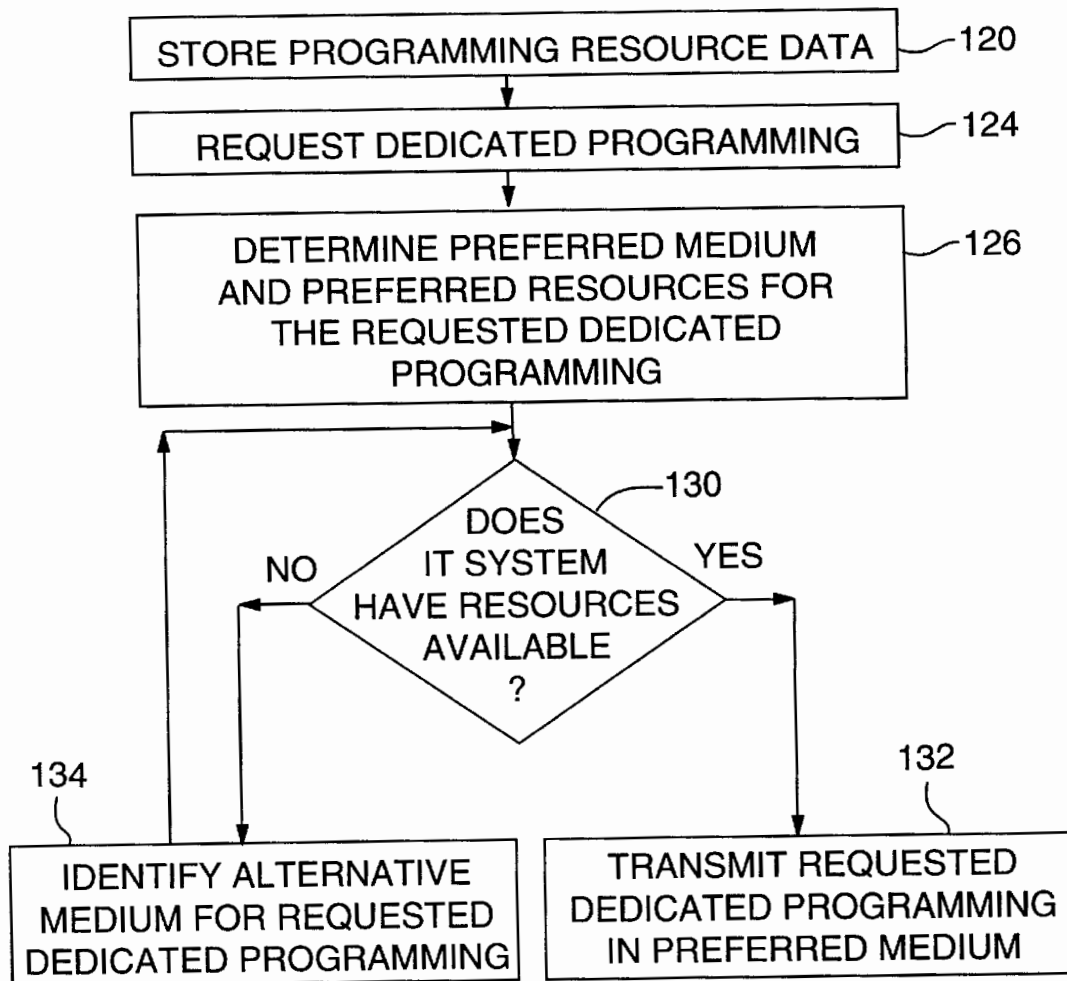
5,008,447	4/1991	Farry et al.	348/7
5,436,653	7/1995	Ellis et al.	455/2
5,515,511	5/1996	Nguyen et al.	348/7
5,583,864	12/1996	Lightfoot et al.	348/7
5,583,994	12/1996	Rangan	348/7
5,606,359	2/1997	Yonden et al.	348/12

*Primary Examiner*—Victor R. Kostak  
*Attorney, Agent, or Firm*—Klarquist Sparkman Campbell Leigh & Whinston, LLP

[57] **ABSTRACT**

The present invention includes a method of delivering programming over an interactive television or televideo (IT) system. The IT system includes a central control node that delivers programming to multiple subscribers or viewers. Each viewer has a video display set (e.g., a television receiver) and an associated interactive controller in communication with the central control node and that is responsive to input from the viewer for controlling programming on the video display set. With reference to a preferred embodiment, the method of this invention includes allocating dedicated programming services among the viewers associated with the IT system. The dedicated programming services may be allocated according to the available resources of the IT system, the relative values of different dedicated programming services, or both. As a result, the method of this invention minimizes disruption of dedicated programming services and particularly those of highest value or priority.

**21 Claims, 4 Drawing Sheets**



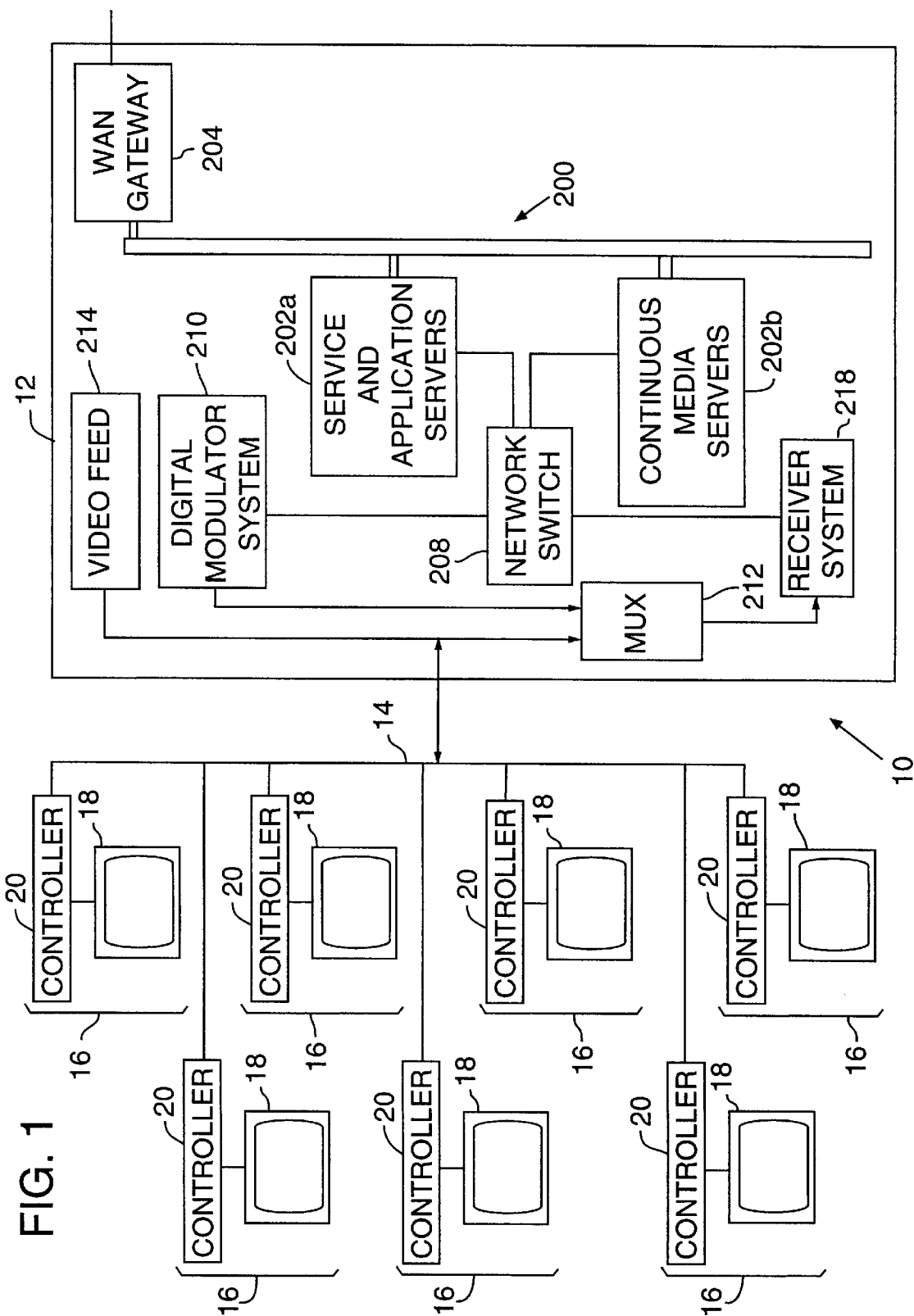


FIG. 1

FIG. 2

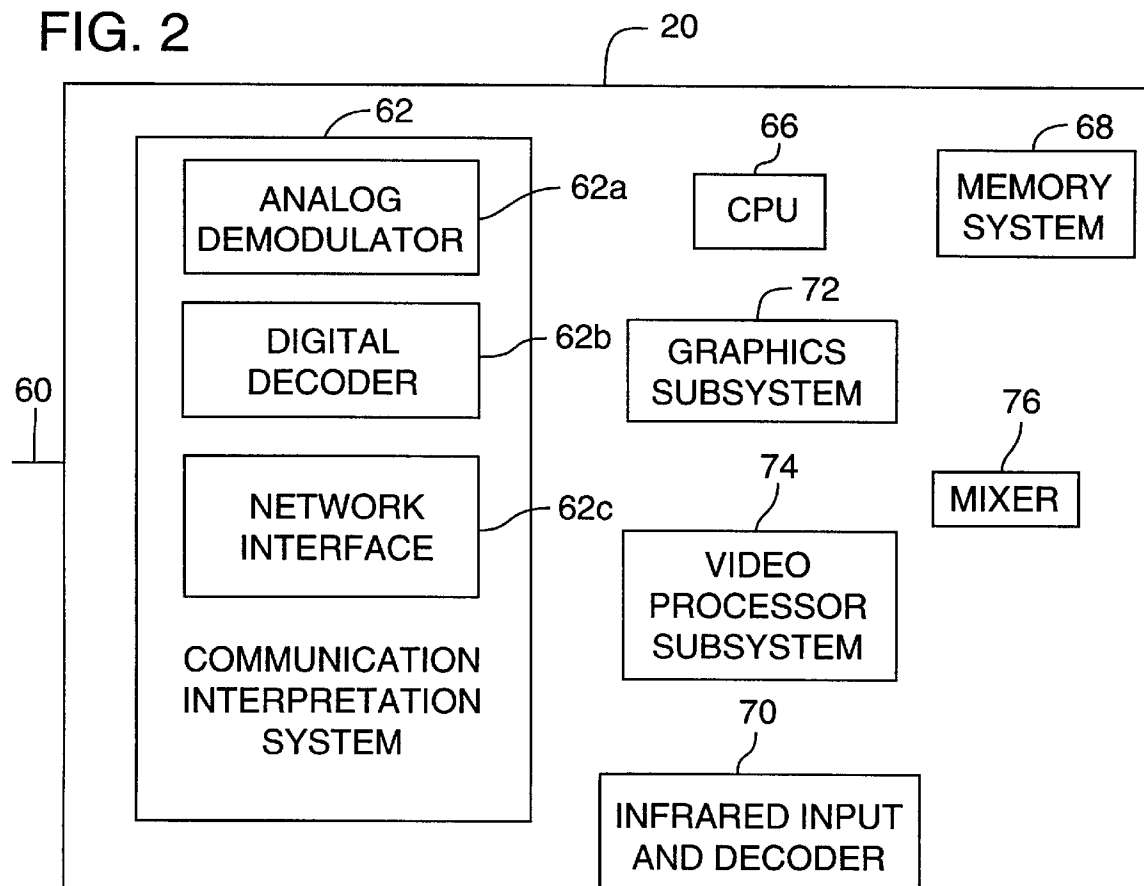


FIG. 3

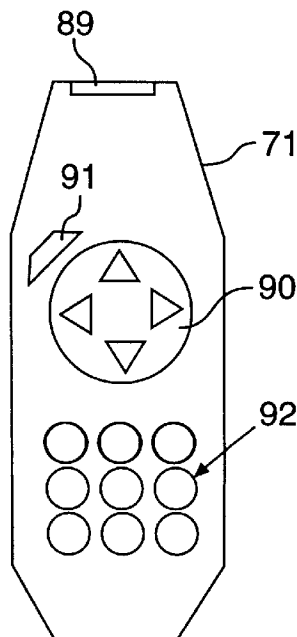


FIG. 4

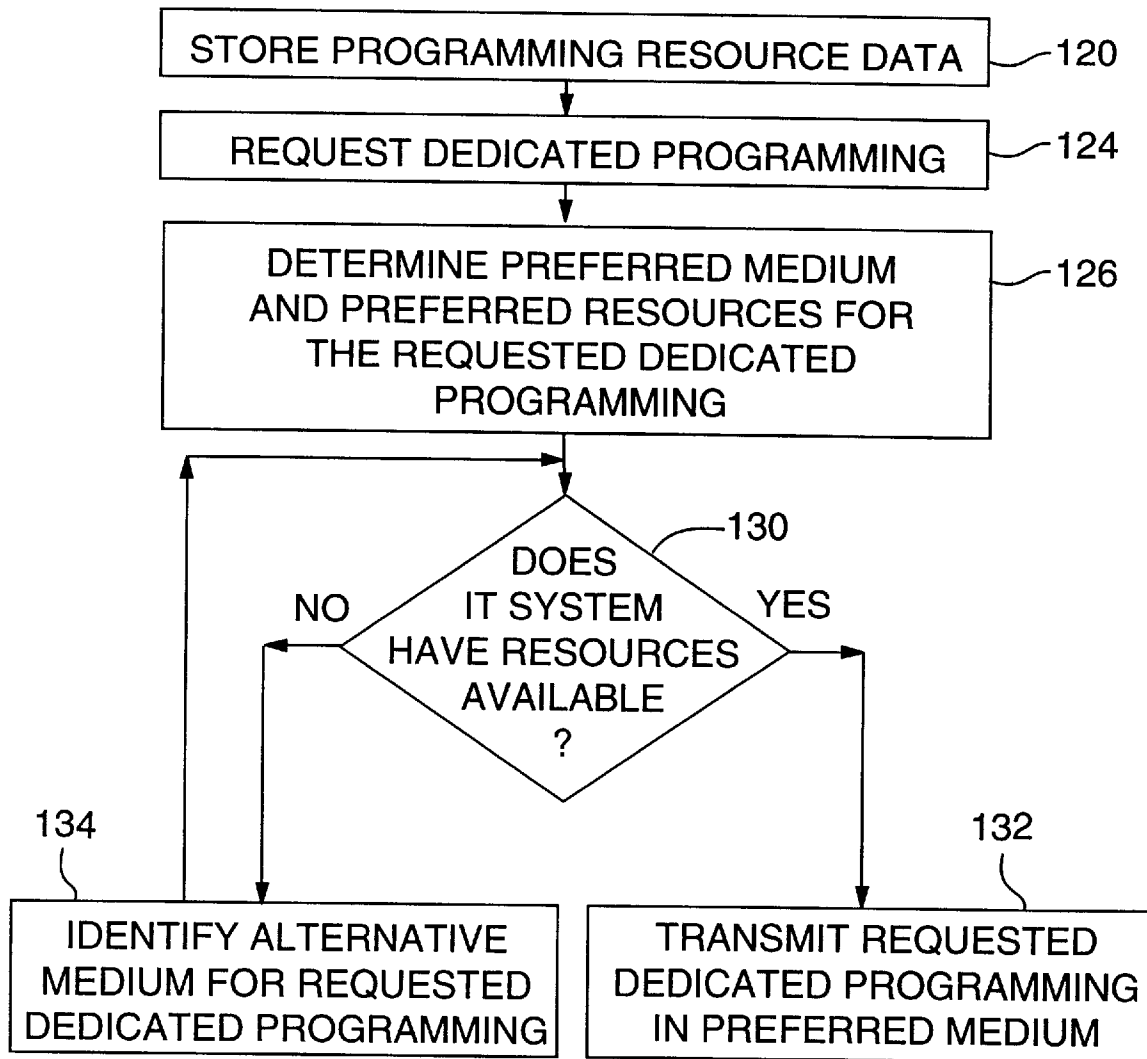
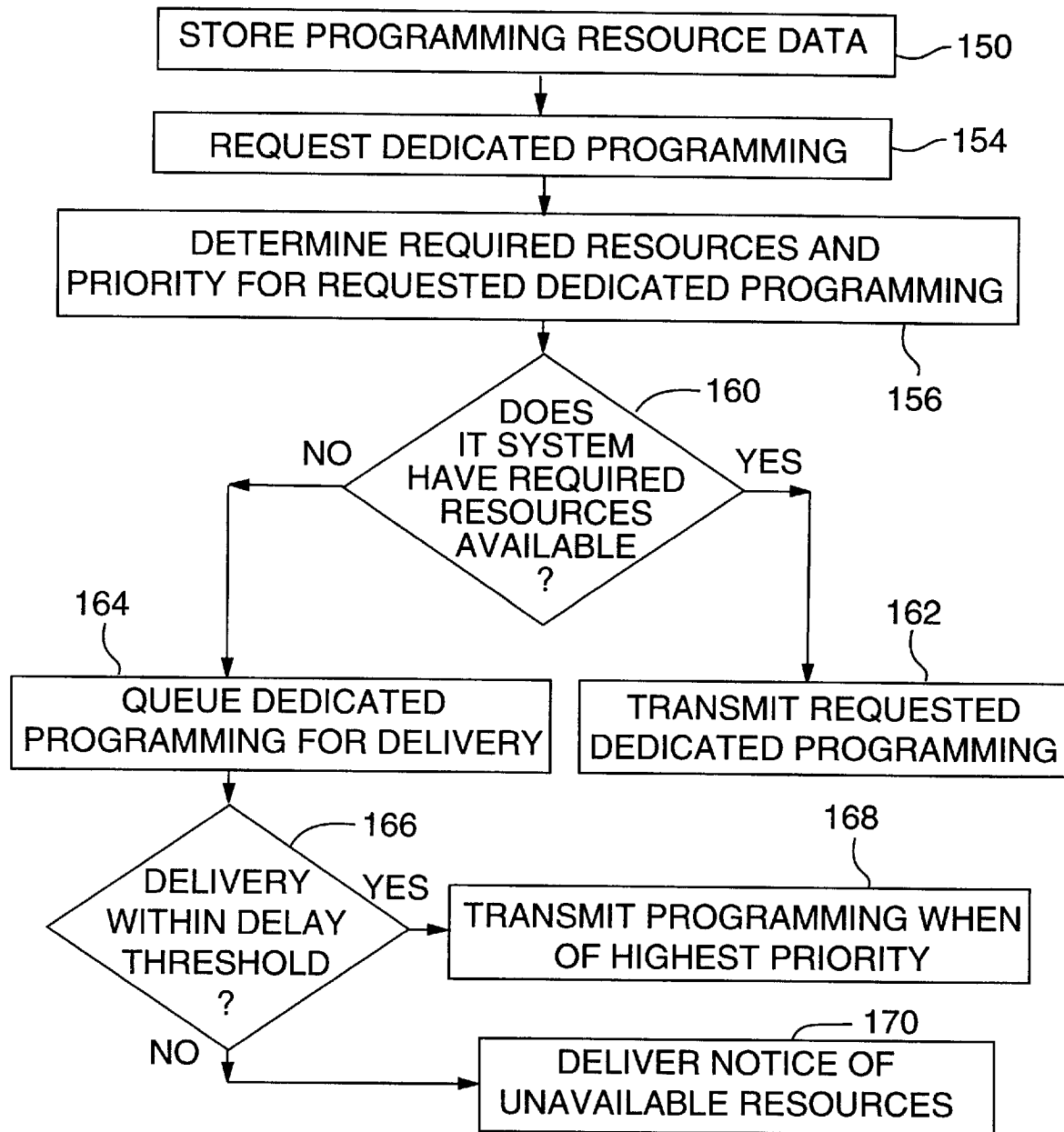


FIG. 5



# Explore Litigation Insights

Docket Alarm provides insights to develop a more informed litigation strategy and the peace of mind of knowing you're on top of things.

## Real-Time Litigation Alerts



Keep your litigation team up-to-date with **real-time alerts** and advanced team management tools built for the enterprise, all while greatly reducing PACER spend.

Our comprehensive service means we can handle Federal, State, and Administrative courts across the country.

## Advanced Docket Research



With over 230 million records, Docket Alarm's cloud-native docket research platform finds what other services can't. Coverage includes Federal, State, plus PTAB, TTAB, ITC and NLRB decisions, all in one place.

Identify arguments that have been successful in the past with full text, pinpoint searching. Link to case law cited within any court document via Fastcase.

## Analytics At Your Fingertips



Learn what happened the last time a particular judge, opposing counsel or company faced cases similar to yours.

Advanced out-of-the-box PTAB and TTAB analytics are always at your fingertips.

## API

Docket Alarm offers a powerful API (application programming interface) to developers that want to integrate case filings into their apps.

## LAW FIRMS

Build custom dashboards for your attorneys and clients with live data direct from the court.

Automate many repetitive legal tasks like conflict checks, document management, and marketing.

## FINANCIAL INSTITUTIONS

Litigation and bankruptcy checks for companies and debtors.

## E-DISCOVERY AND LEGAL VENDORS

Sync your system to PACER to automate legal marketing.