



(19) **United States**

(12) **Patent Application Publication**
Wright

(10) **Pub. No.: US 2004/0174884 A1**

(43) **Pub. Date: Sep. 9, 2004**

(54) **METHOD FOR TRAFFIC ENGINEERING OF CONNECTIONLESS VIRTUAL PRIVATE NETWORK SERVICES**

(57) **ABSTRACT**

(76) Inventor: **Steven Allan Wright**, Roswell, GA (US)

Correspondence Address:
CANTOR COLBURN, LLP
55 GRIFFIN ROAD SOUTH
BLOOMFIELD, CT 06002

(21) Appl. No.: **10/382,258**

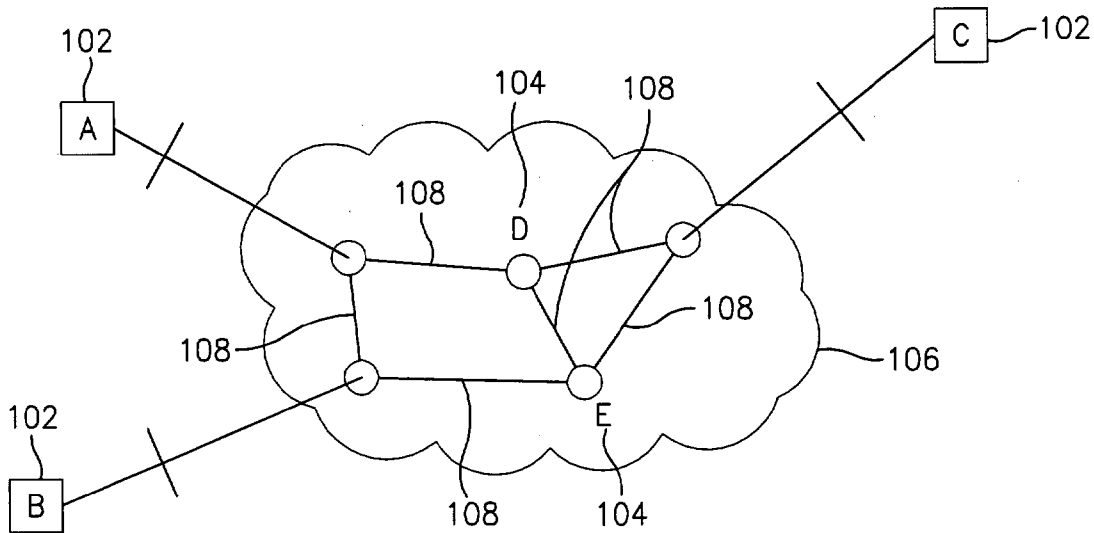
(22) Filed: **Mar. 5, 2003**

Publication Classification

(51) **Int. Cl.⁷ H04L 12/28**

(52) **U.S. Cl. 370/395.41**

A method for traffic engineering of connectionless virtual private network (VPN) services. The method comprises receiving physical connectivity data for a connectionless VPN including service nodes and links between the service nodes. One or more of the service nodes are also edge nodes. Logical connectivity data for the edge nodes is received. A restricted topology is created in response to the physical connectivity data and to the logical connectivity data. The restricted topology includes a single path between each pair of the edge nodes and each path includes a plurality of the service nodes and one or more of the links. A bandwidth requirement for each link in the restricted topology is calculated. The bandwidth requirement is reserved on each link in the restricted topology. The method further comprises directing routing software to force a packet received from an edge node through one of the paths in the restricted topology.



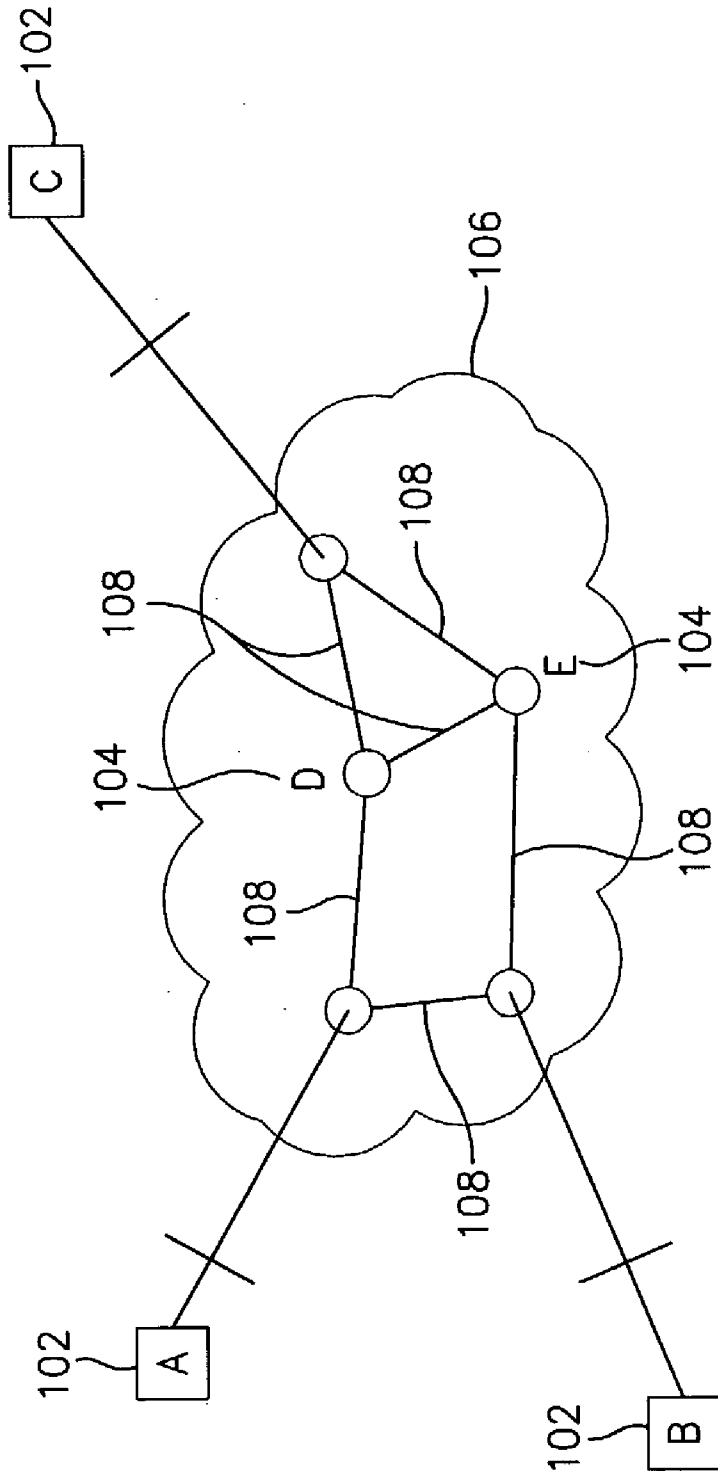


FIG. 1

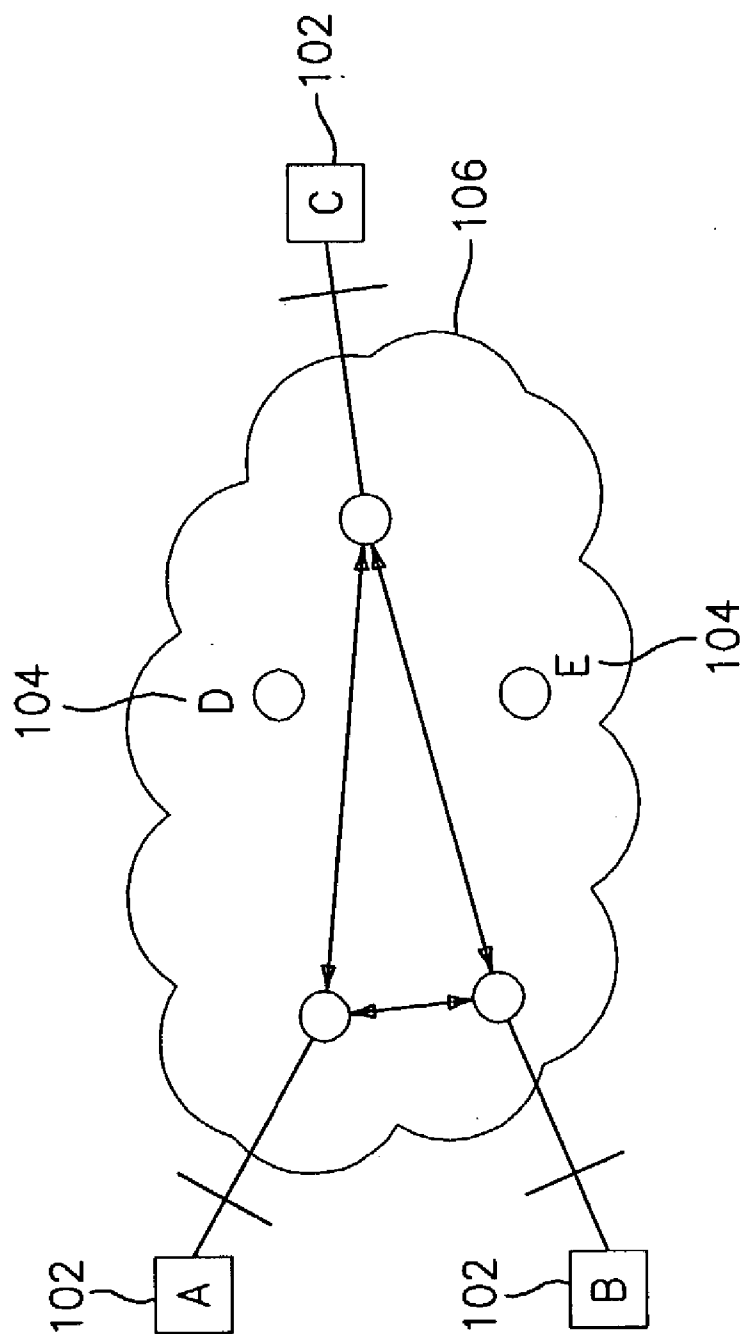


FIG. 2

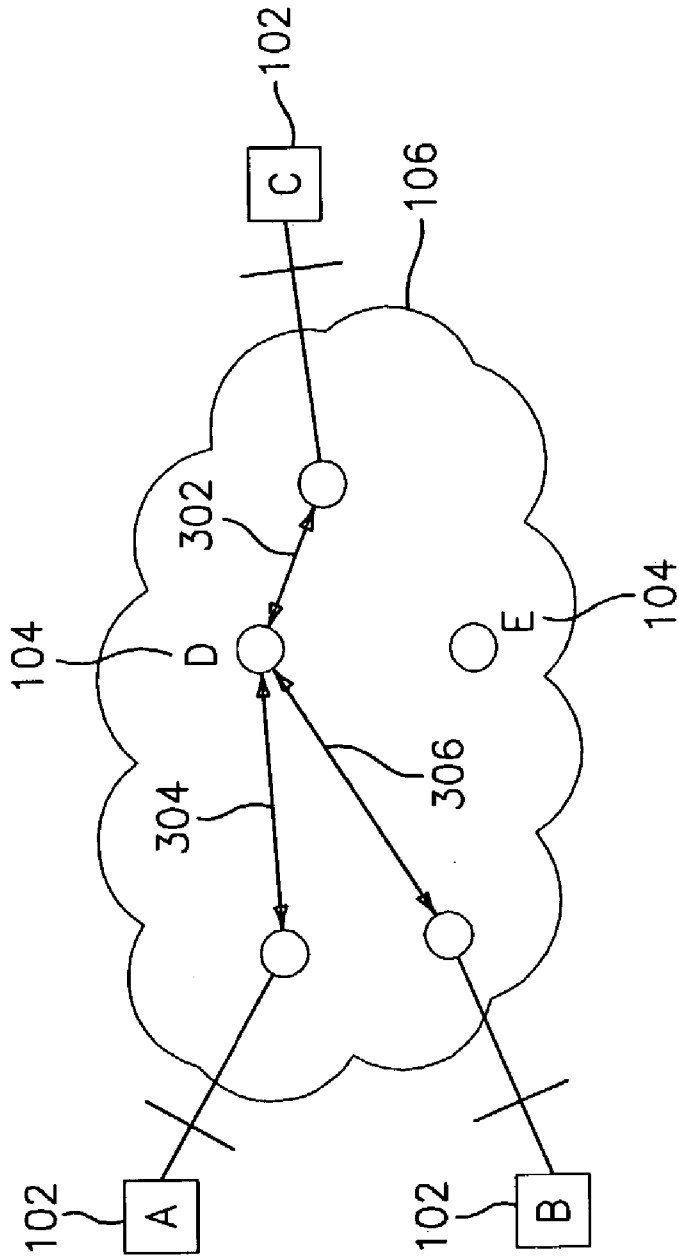


FIG. 3

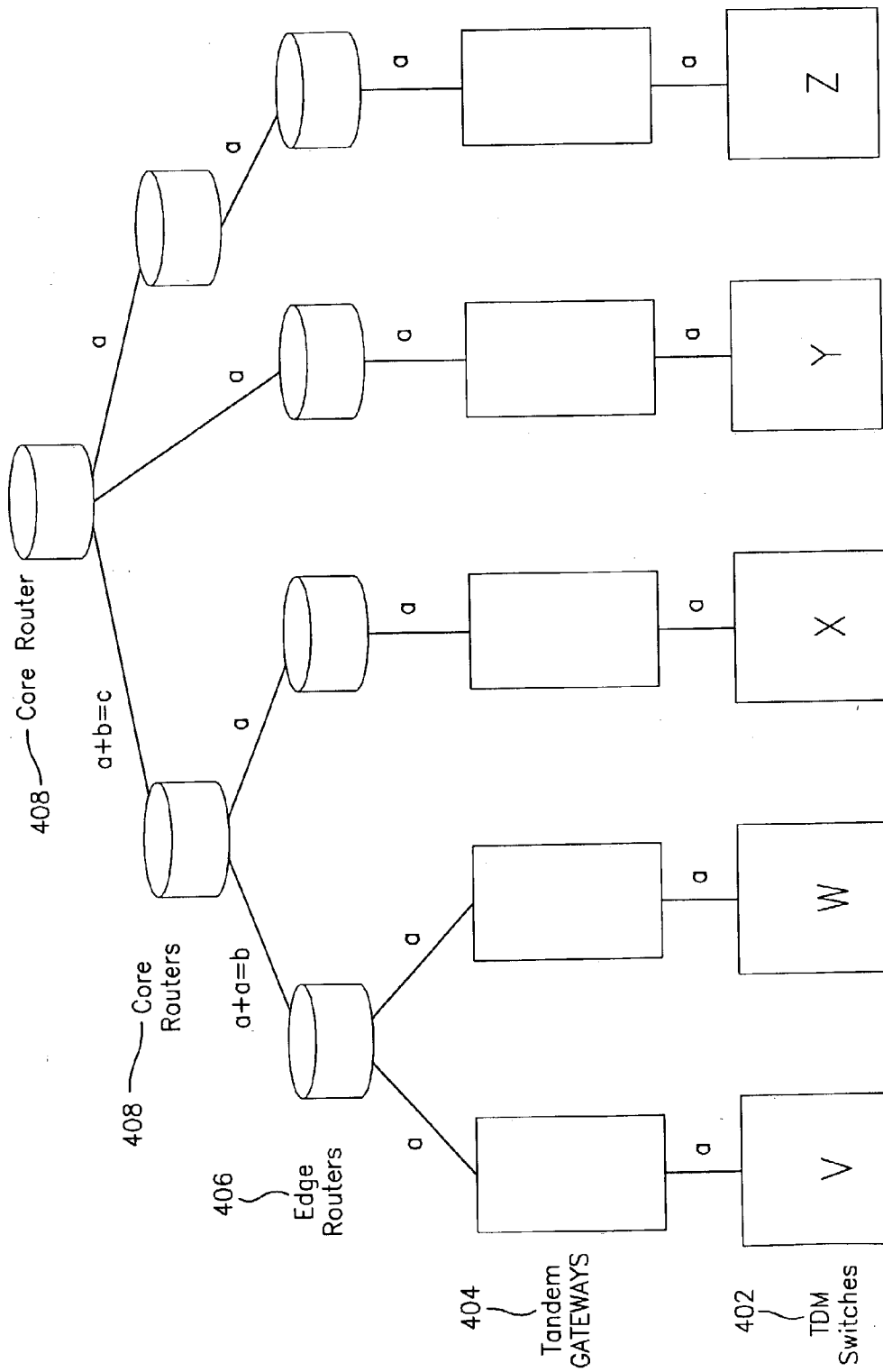


FIG. 4

Explore Litigation Insights

Docket Alarm provides insights to develop a more informed litigation strategy and the peace of mind of knowing you're on top of things.

Real-Time Litigation Alerts



Keep your litigation team up-to-date with **real-time alerts** and advanced team management tools built for the enterprise, all while greatly reducing PACER spend.

Our comprehensive service means we can handle Federal, State, and Administrative courts across the country.

Advanced Docket Research



With over 230 million records, Docket Alarm's cloud-native docket research platform finds what other services can't. Coverage includes Federal, State, plus PTAB, TTAB, ITC and NLRB decisions, all in one place.

Identify arguments that have been successful in the past with full text, pinpoint searching. Link to case law cited within any court document via Fastcase.

Analytics At Your Fingertips



Learn what happened the last time a particular judge, opposing counsel or company faced cases similar to yours.

Advanced out-of-the-box PTAB and TTAB analytics are always at your fingertips.

API

Docket Alarm offers a powerful API (application programming interface) to developers that want to integrate case filings into their apps.

LAW FIRMS

Build custom dashboards for your attorneys and clients with live data direct from the court.

Automate many repetitive legal tasks like conflict checks, document management, and marketing.

FINANCIAL INSTITUTIONS

Litigation and bankruptcy checks for companies and debtors.

E-DISCOVERY AND LEGAL VENDORS

Sync your system to PACER to automate legal marketing.