

(12) **United States Patent**
White et al.

(10) **Patent No.:** **US 6,408,272 B1**
(45) **Date of Patent:** **Jun. 18, 2002**

- (54) **DISTRIBUTED VOICE USER INTERFACE**
- (75) **Inventors:** **George M. White**, Santa Cruz; **James J. Buteau**, Mountain View; **Glen E. Shires**, Danville; **Kevin J. Surace**, Sunnyvale; **Steven Markman**, Los Gatos, all of CA (US)
- (73) **Assignee:** **General Magic, Inc.**, Sunnyvale, CA (US)

5,819,220 A	*	10/1998	Sarukkai et al.	704/270
5,926,789 A	*	7/1999	Barbara et al.	704/275
5,946,050 A	*	8/1999	Wolff	704/270
5,953,392 A	*	9/1999	Rhie et al.	379/88.13
5,953,700 A	*	9/1999	Kanevsky et al.	704/246
5,956,683 A	*	9/1999	Jacobs et al.	704/275
5,960,399 A	*	9/1999	Barclay et al.	704/270
5,963,618 A	*	10/1999	Porter	379/88.17
6,078,886 A	*	6/2000	Dragosh et al.	704/270
6,098,043 A	*	8/2000	Forest et al.	704/270
6,101,473 A	*	8/2000	Scott et al.	704/270

(*) **Notice:** Subject to any disclaimer, the term of this patent is extended or adjusted under 35 U.S.C. 154(b) by 0 days.

* cited by examiner

Primary Examiner—Tālinvaldis Ivars Šmits
Assistant Examiner—Martin Lerner
(74) *Attorney, Agent, or Firm*—Skjerven Morrill LLP

- (21) **Appl. No.:** **09/290,508**
- (22) **Filed:** **Apr. 12, 1999**
- (51) **Int. Cl.⁷** **G10L 15/22**
- (52) **U.S. Cl.** **704/270.1; 704/275**
- (58) **Field of Search** 704/251, 252, 704/270, 270.1, 275, 200, 201; 379/88.01, 88.04, 88.16

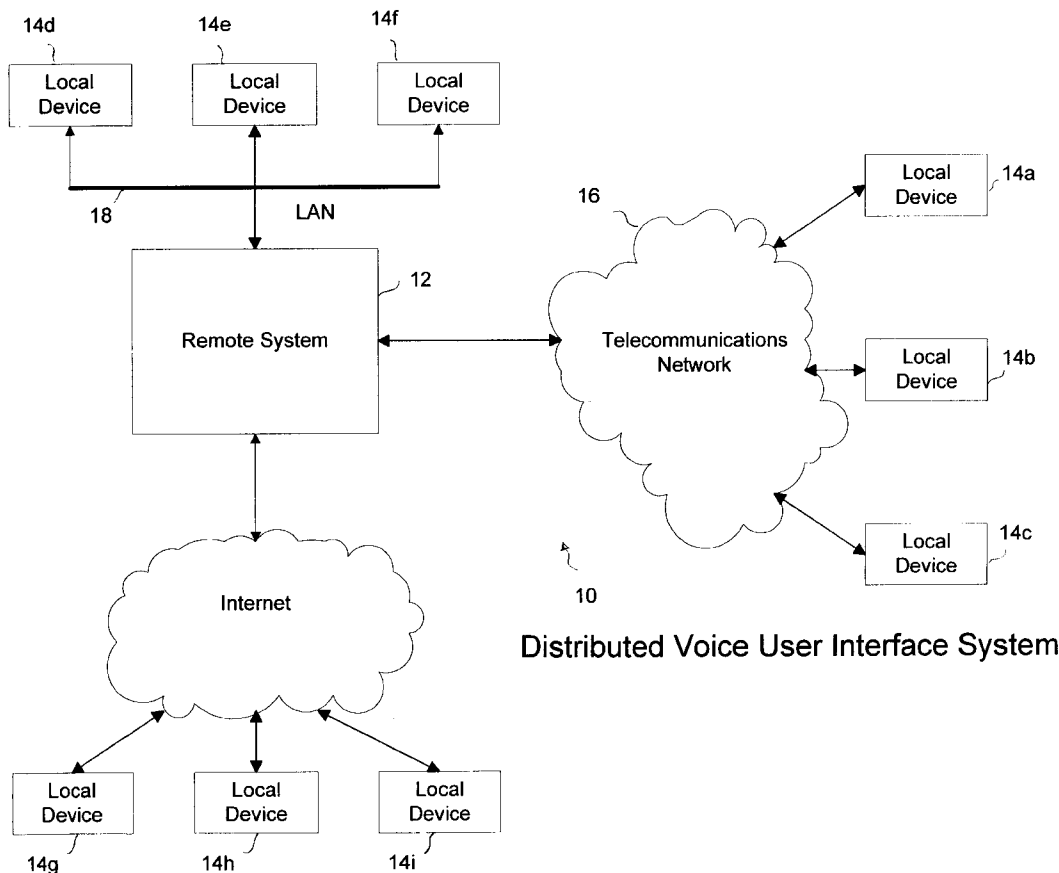
(57) **ABSTRACT**

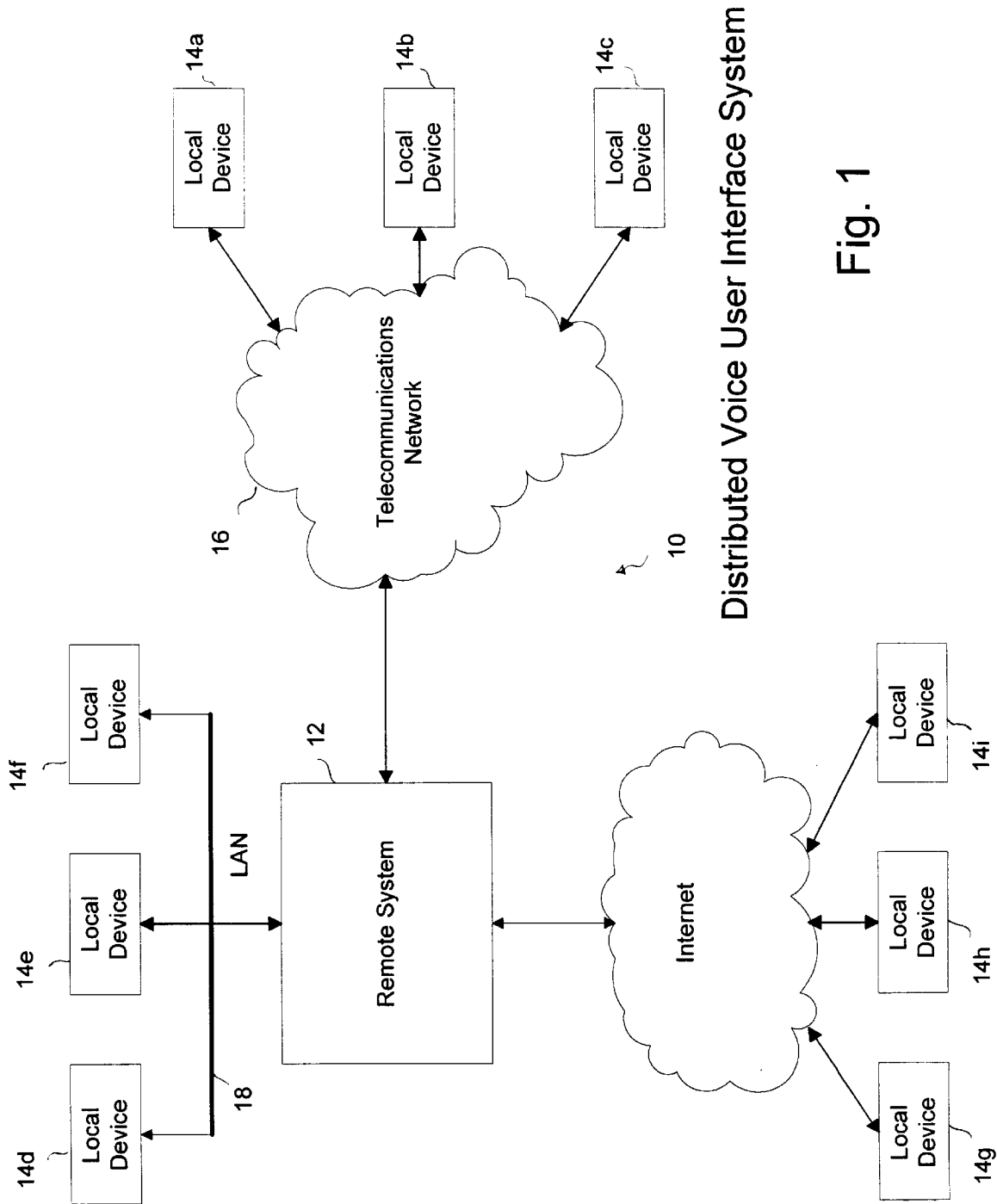
A distributed voice user interface system includes a local device which receives speech input issued from a user. Such speech input may specify a command or a request by the user. The local device performs preliminary processing of the speech input and determines whether it is able to respond to the command or request by itself. If not, the local device initiates communication with a remote system for further processing of the speech input.

(56) **References Cited**
U.S. PATENT DOCUMENTS

4,525,793 A * 7/1985 Stackhouse 704/270

6 Claims, 5 Drawing Sheets





Distributed Voice User Interface System

Fig. 1

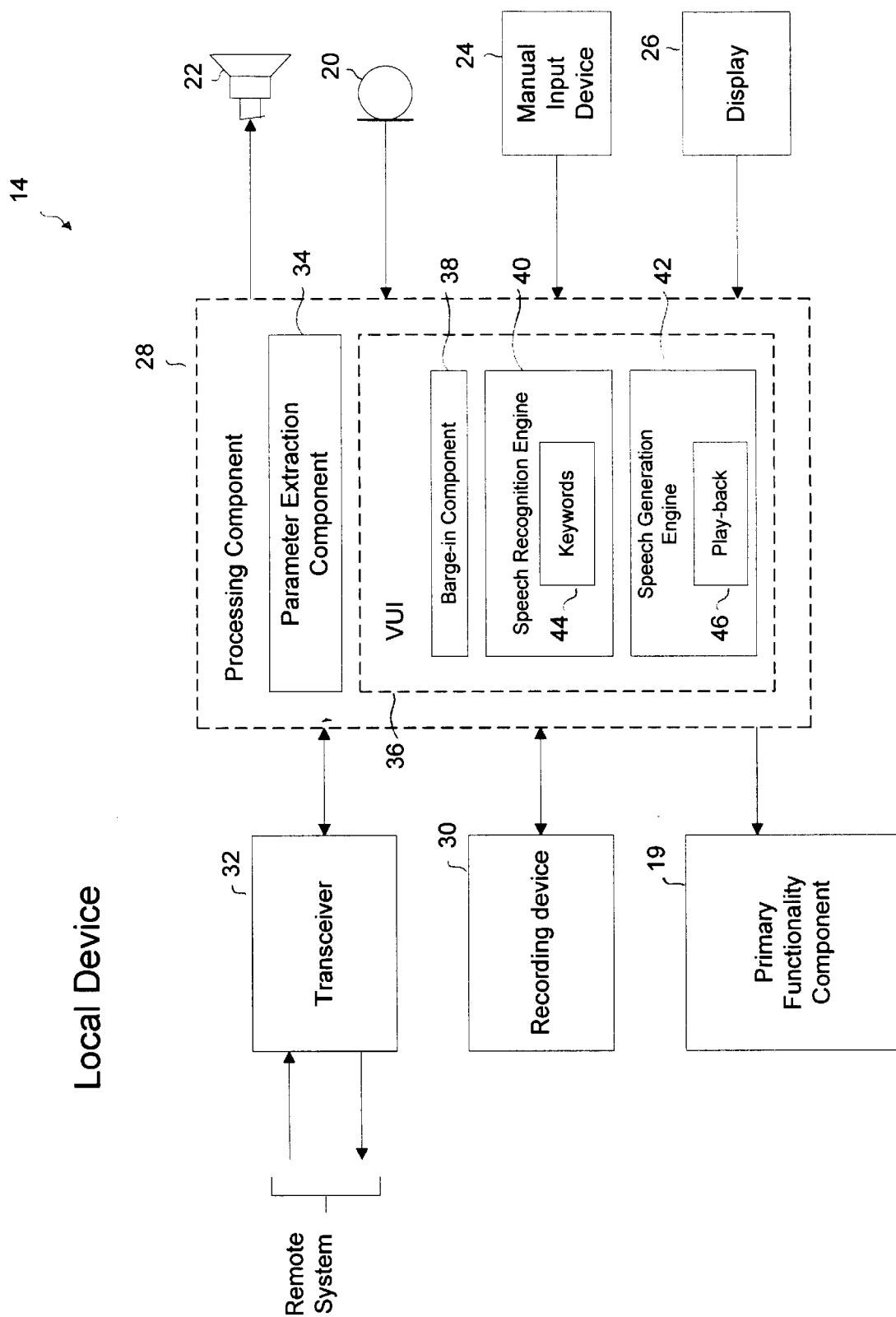


Fig. 2

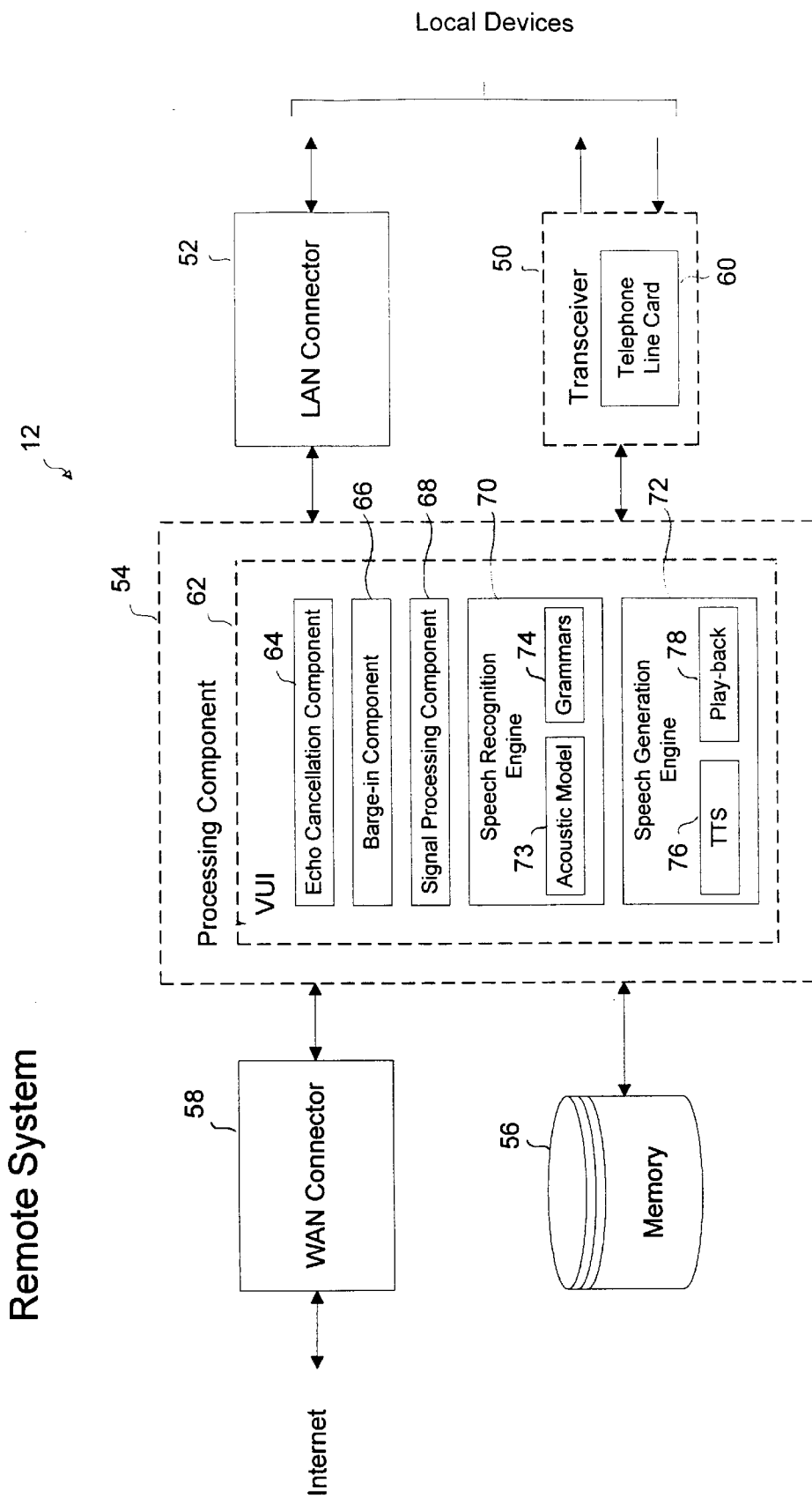


Fig. 3

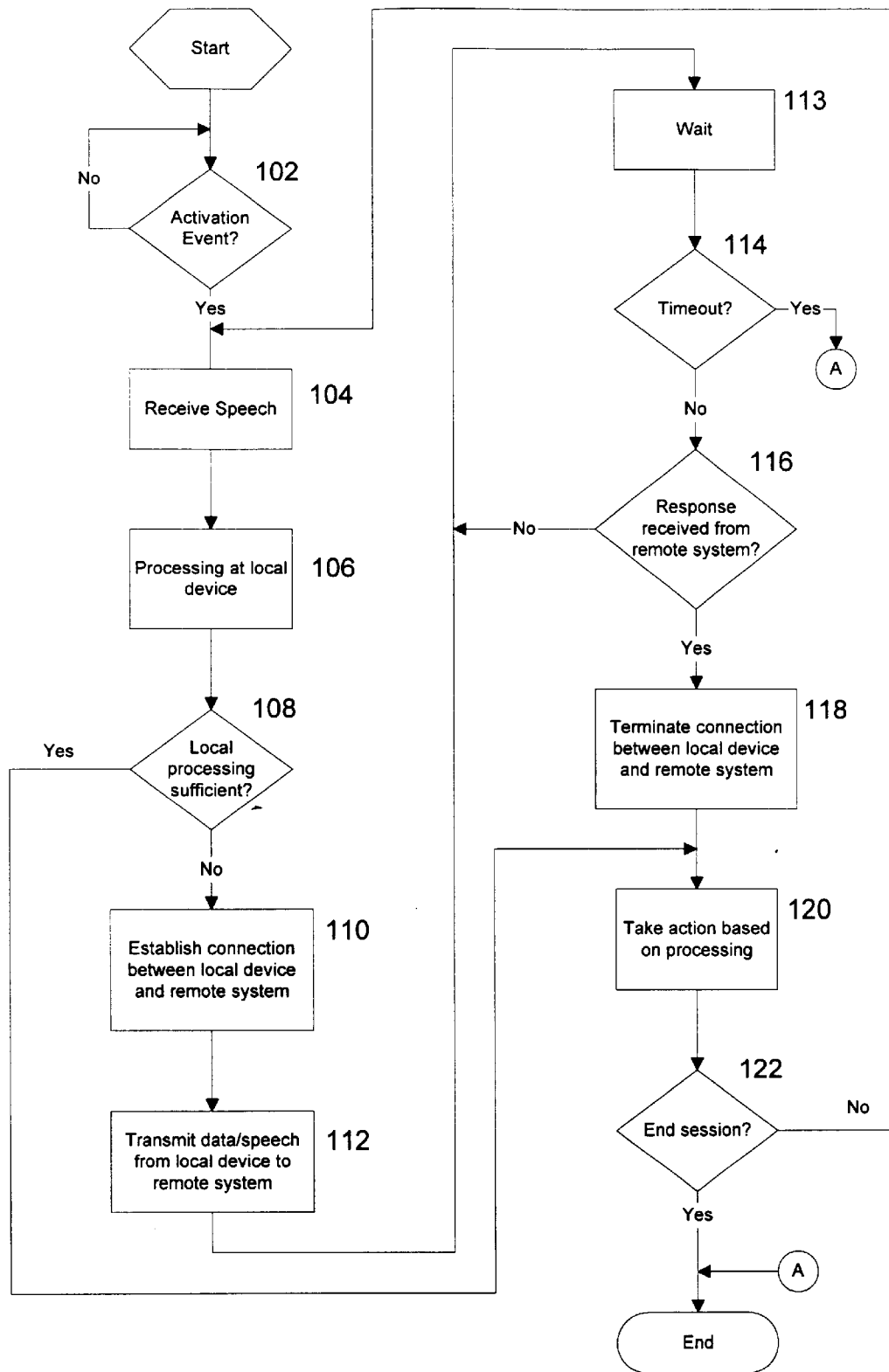


Fig. 4

Explore Litigation Insights

Docket Alarm provides insights to develop a more informed litigation strategy and the peace of mind of knowing you're on top of things.

Real-Time Litigation Alerts



Keep your litigation team up-to-date with **real-time alerts** and advanced team management tools built for the enterprise, all while greatly reducing PACER spend.

Our comprehensive service means we can handle Federal, State, and Administrative courts across the country.

Advanced Docket Research



With over 230 million records, Docket Alarm's cloud-native docket research platform finds what other services can't. Coverage includes Federal, State, plus PTAB, TTAB, ITC and NLRB decisions, all in one place.

Identify arguments that have been successful in the past with full text, pinpoint searching. Link to case law cited within any court document via Fastcase.

Analytics At Your Fingertips



Learn what happened the last time a particular judge, opposing counsel or company faced cases similar to yours.

Advanced out-of-the-box PTAB and TTAB analytics are always at your fingertips.

API

Docket Alarm offers a powerful API (application programming interface) to developers that want to integrate case filings into their apps.

LAW FIRMS

Build custom dashboards for your attorneys and clients with live data direct from the court.

Automate many repetitive legal tasks like conflict checks, document management, and marketing.

FINANCIAL INSTITUTIONS

Litigation and bankruptcy checks for companies and debtors.

E-DISCOVERY AND LEGAL VENDORS

Sync your system to PACER to automate legal marketing.