

(54) **SYSTEM AND METHOD FOR PEER-TO-PEER ACCELERATED I/O SHIPPING BETWEEN HOST BUS ADAPTERS IN CLUSTERED COMPUTER NETWORK**

(75) Inventors: **Thomas F. Heil**, Fort Collins, CO (US);  
**Martin H. Francis**, Wichita, KS (US);  
**Rodney A. DeKoning**, Wichita, KS (US);  
**Bret S. Weber**, Wichita, KS (US)

(73) Assignee: **LSI Logic Corporation**, Milpitas, CA (US)

(\* ) Notice: This patent issued on a continued prosecution application filed under 37 CFR 1.53(d), and is subject to the twenty year patent term provisions of 35 U.S.C. 154(a)(2).

Under 35 U.S.C. 154(b), the term of this patent shall be extended for 0 days.

(21) Appl. No.: **09/022,350**

(22) Filed: **Feb. 11, 1998**

(51) Int. Cl.<sup>7</sup> ..... **G06F 12/00**

(52) U.S. Cl. .... **711/148; 711/147; 711/130; 711/153; 709/213; 709/214; 709/217; 709/212**

(58) Field of Search ..... **711/147, 148, 711/114; 709/213, 214, 215, 232, 231, 201, 206, 212, 244, 249**

(56) **References Cited**

**U.S. PATENT DOCUMENTS**

3,794,983 \* 2/1974 Sahin ..... 340/172.5

4,539,655 *	9/1985	Trussell et al. ....	364/900
4,698,753 *	10/1987	Hubbins et al. ....	364/200
4,805,137 *	2/1989	Grant et al. ....	364/900
4,935,894 *	6/1990	Ternes et al. ....	364/900
5,210,828 *	5/1993	Bolan et al. ....	395/200
5,410,654 *	4/1995	Foster et al. ....	395/275
5,471,638 *	11/1995	Keeley .....	395/800
5,499,384 *	3/1996	Lentz et al. ....	395/821
5,522,050 *	5/1996	Amini et al. ....	395/306
5,675,791 *	10/1997	Bhide et al. ....	395/621

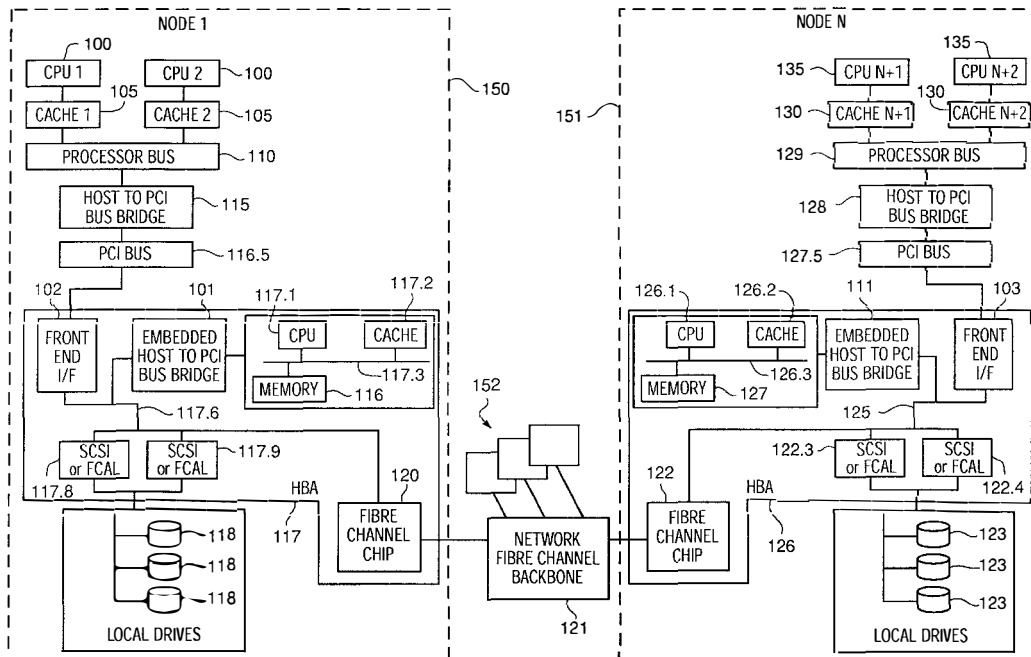
\* cited by examiner

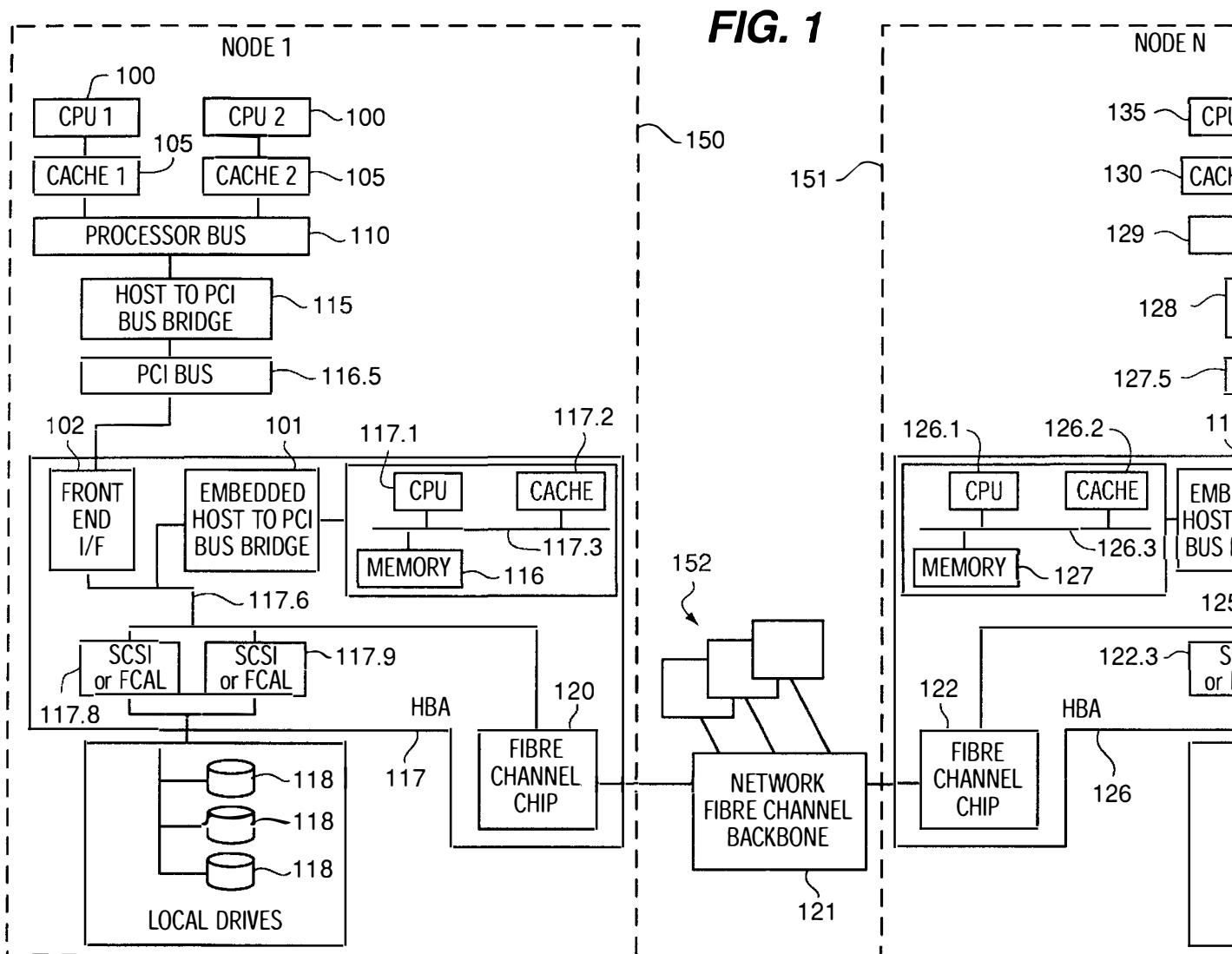
*Primary Examiner*—John W. Cabeca  
*Assistant Examiner*—Kimberly McLean

(57) **ABSTRACT**

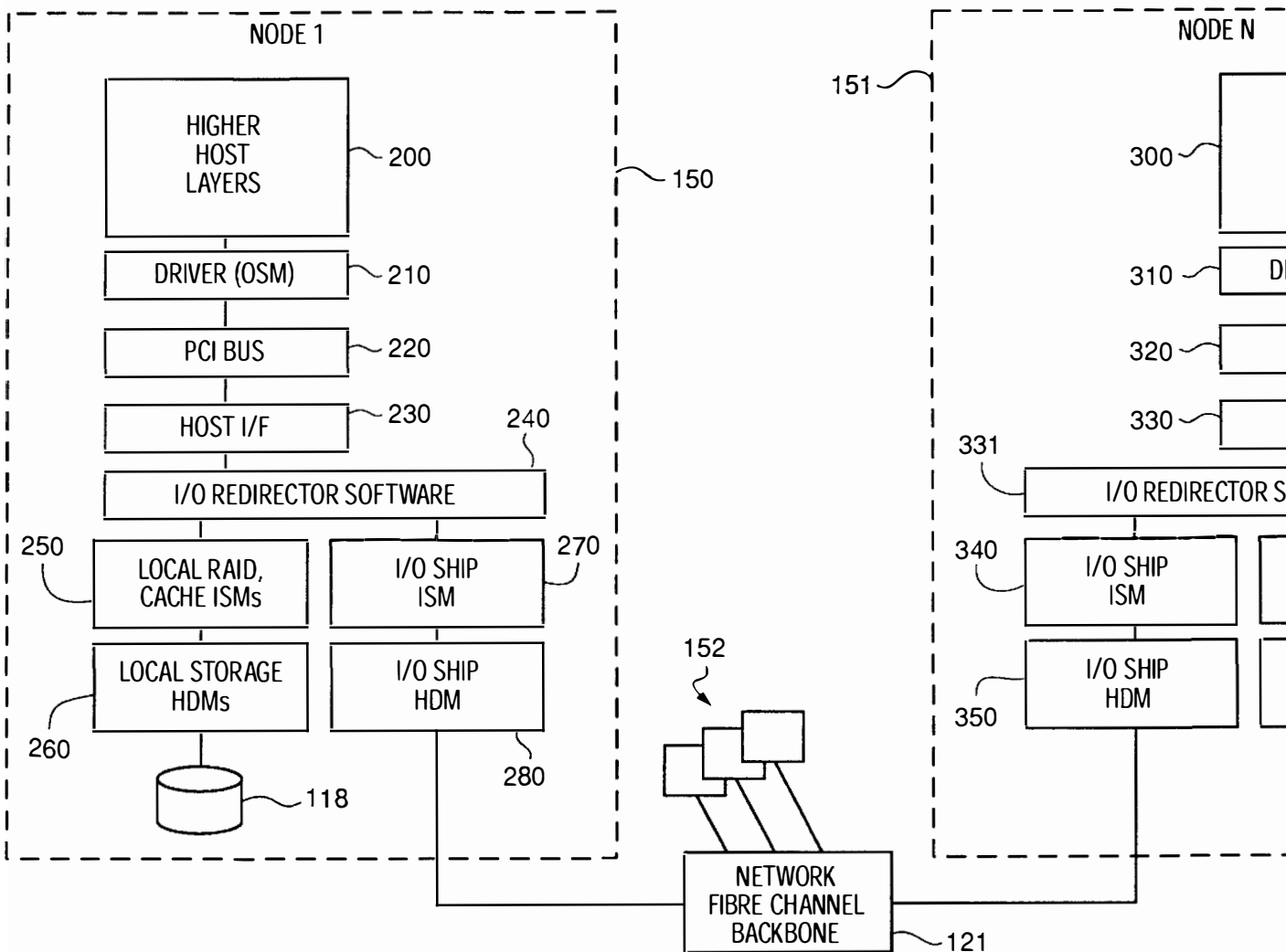
The present invention retrieves data across independent computer nodes of a server cluster by providing for I/O shipping of block level requests to peer intelligent host-bus adapters (hereinafter referred to as HBA). This peer-to-peer distribution of block I/O requests is transparent to the host. The HBA has the intelligence to decide whether to satisfy a block I/O request locally or remotely. Each HBA driver utilizes the I<sub>2</sub>O protocol, which allows peer-to-peer communication independent of the operating system or hardware of the underlying network. In a first embodiment of the present invention, local and remote storage channels, within a node, are supported by a single HBA. In a second embodiment of the present invention, local storage channels, within a node, are supported by one HBA, and the remote storage channel, within a node, is supported by a separate HBA.

**31 Claims, 7 Drawing Sheets**

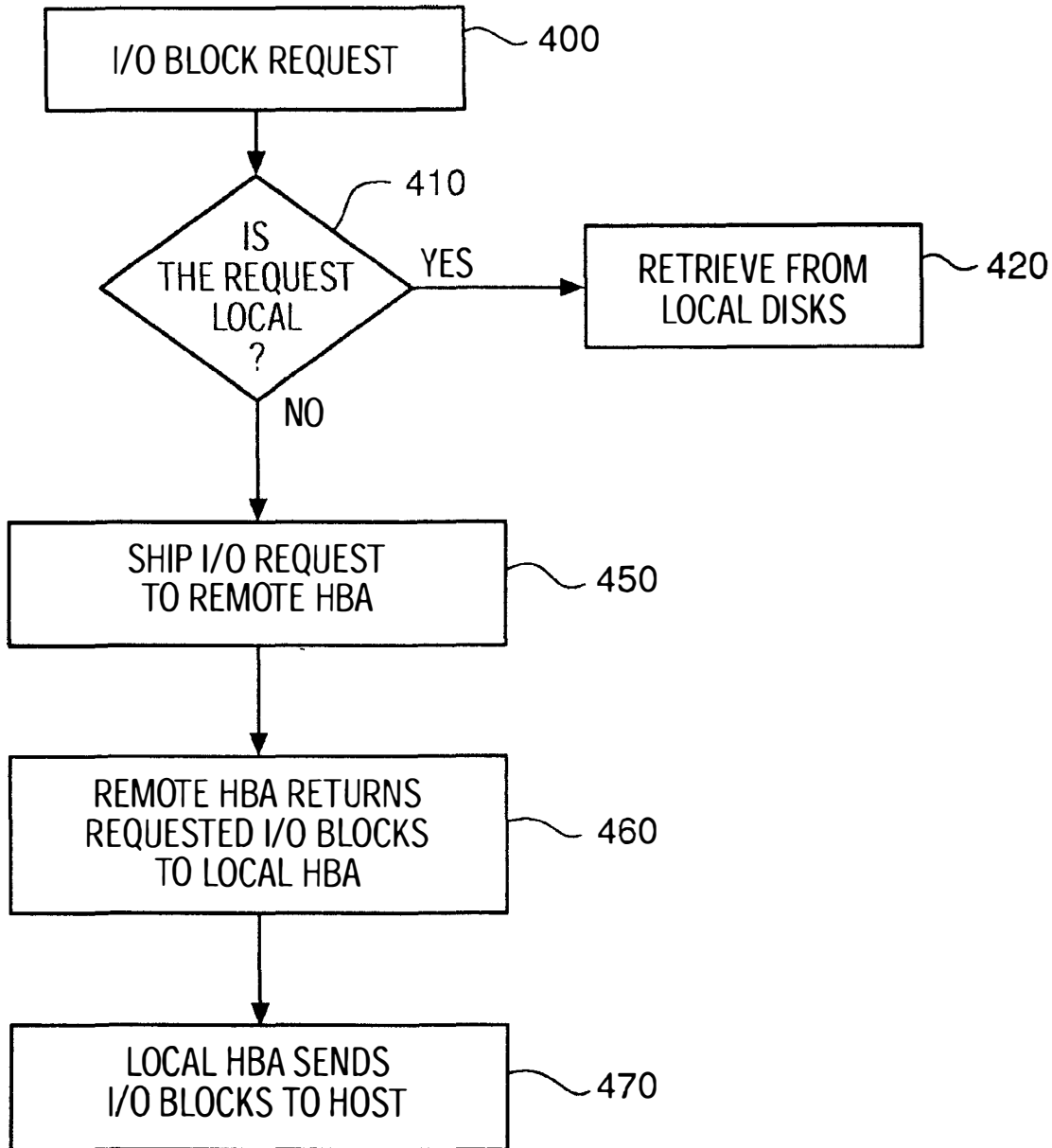




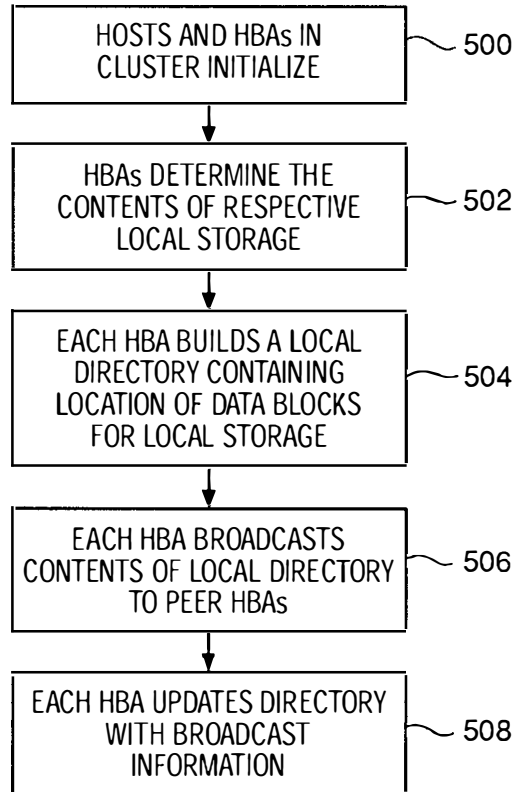
**FIG. 2**



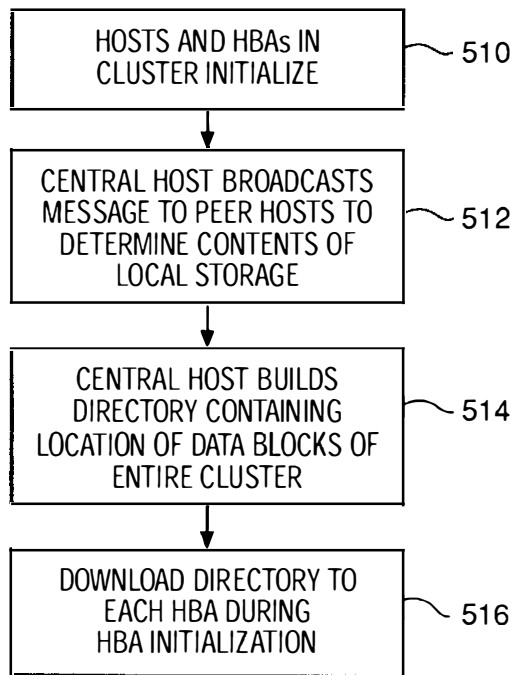
**FIG. 3**



**FIG. 4A**



**FIG. 4B**



# Explore Litigation Insights

Docket Alarm provides insights to develop a more informed litigation strategy and the peace of mind of knowing you're on top of things.

## Real-Time Litigation Alerts



Keep your litigation team up-to-date with **real-time alerts** and advanced team management tools built for the enterprise, all while greatly reducing PACER spend.

Our comprehensive service means we can handle Federal, State, and Administrative courts across the country.

## Advanced Docket Research



With over 230 million records, Docket Alarm's cloud-native docket research platform finds what other services can't. Coverage includes Federal, State, plus PTAB, TTAB, ITC and NLRB decisions, all in one place.

Identify arguments that have been successful in the past with full text, pinpoint searching. Link to case law cited within any court document via Fastcase.

## Analytics At Your Fingertips



Learn what happened the last time a particular judge, opposing counsel or company faced cases similar to yours.

Advanced out-of-the-box PTAB and TTAB analytics are always at your fingertips.

## API

Docket Alarm offers a powerful API (application programming interface) to developers that want to integrate case filings into their apps.

## LAW FIRMS

Build custom dashboards for your attorneys and clients with live data direct from the court.

Automate many repetitive legal tasks like conflict checks, document management, and marketing.

## FINANCIAL INSTITUTIONS

Litigation and bankruptcy checks for companies and debtors.

## E-DISCOVERY AND LEGAL VENDORS

Sync your system to PACER to automate legal marketing.