



US006912137B2

(12) **United States Patent**
Berghegger

(10) **Patent No.:** **US 6,912,137 B2**
(45) **Date of Patent:** **Jun. 28, 2005**

(54) **INDUCTIVE CONTACTLESS POWER TRANSMITTER**

(75) Inventor: **Schroder Ralf gen Berghegger**,
Glandorf (DE)

(73) Assignee: **Friwo Geraetebau GmbH**, Ostbevern
(DE)

(*) Notice: Subject to any disclaimer, the term of this patent is extended or adjusted under 35 U.S.C. 154(b) by 110 days.

(21) Appl. No.: **10/306,666**

(22) Filed: **Nov. 28, 2002**

(65) **Prior Publication Data**

US 2003/0151930 A1 Aug. 14, 2003

(30) **Foreign Application Priority Data**

Nov. 30, 2001 (DE) 101 58 794

(51) **Int. Cl.**⁷ **H02M 3/335**

(52) **U.S. Cl.** **363/21.03**

(58) **Field of Search** 363/16, 131, 178,
363/21.03; 307/150

(56) **References Cited**

U.S. PATENT DOCUMENTS

5,959,433 A 9/1999 Rohde
6,018,467 A 1/2000 Majid et al.

6,118,249 A 9/2000 Brockmann et al.
6,160,374 A 12/2000 Hayes et al.
6,490,176 B2 * 12/2002 Holzer et al. 363/20
2002/0141208 A1 * 10/2002 Nanbu et al. 363/37

FOREIGN PATENT DOCUMENTS

DE 3544955 6/1986
DE 4438387 5/1996
DE 19633171 2/1998
DE 19741279 3/1999
JP 11283854 10/1999

* cited by examiner

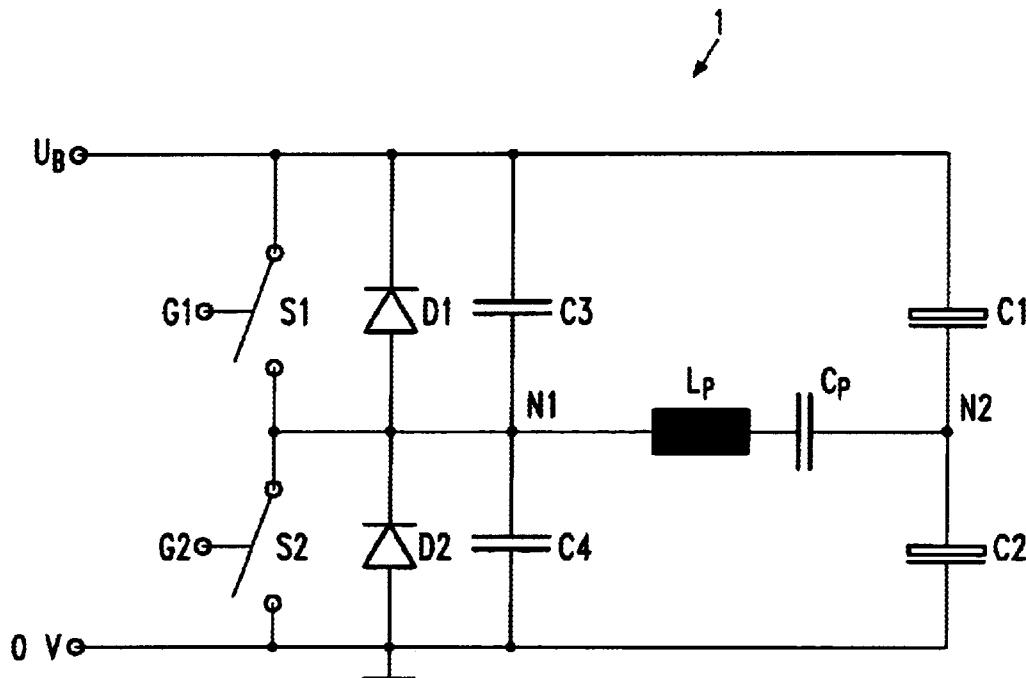
Primary Examiner—Shawn Riley

(74) Attorney, Agent, or Firm—Michael Best & Friedrich LLP

(57) **ABSTRACT**

The present invention relates to an inductive contactless power transmitter having a primary side including a first inductor (L_p) on the primary side and an oscillator for producing an alternating signal which is supplied to the inductor (L_p) on the primary side, and having a secondary side which includes an inductor on the secondary side that can be coupled to the inductor (L_p) on the primary side, a load (R_L) which is variable in time, and a detection means (42) for determining a power demand of the load on the secondary side, the first oscillator being a voltage-controlled oscillator having a frequency that is adjustable in response to the power demand determined by the detection means (42).

14 Claims, 4 Drawing Sheets



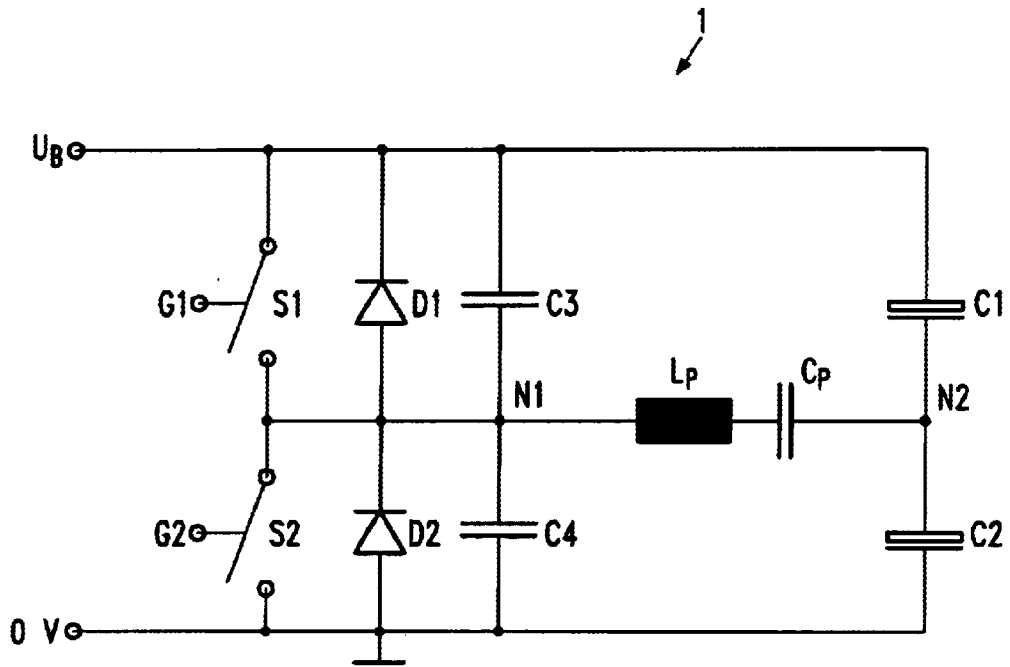


Fig. 1a

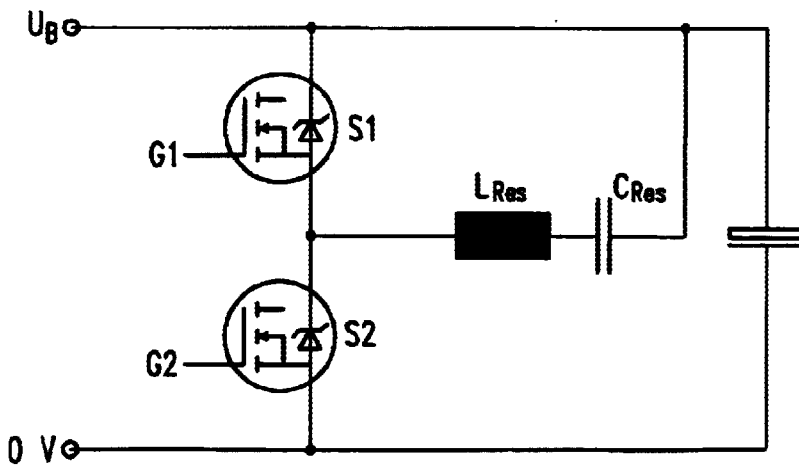


Fig. 1b

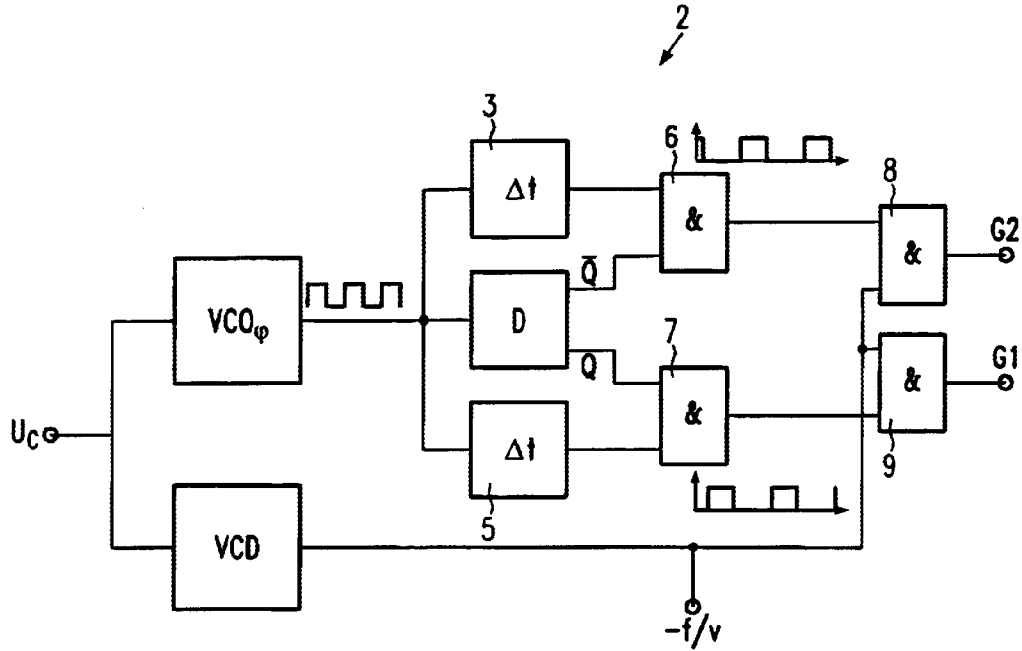


Fig.2

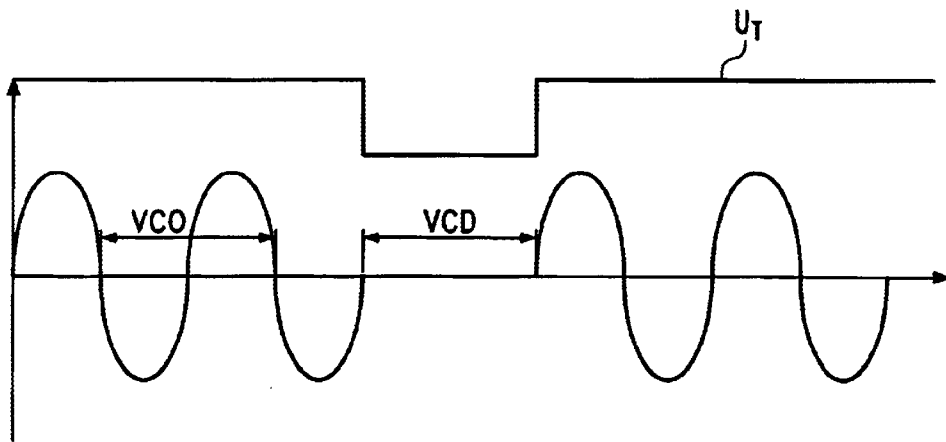


Fig.3

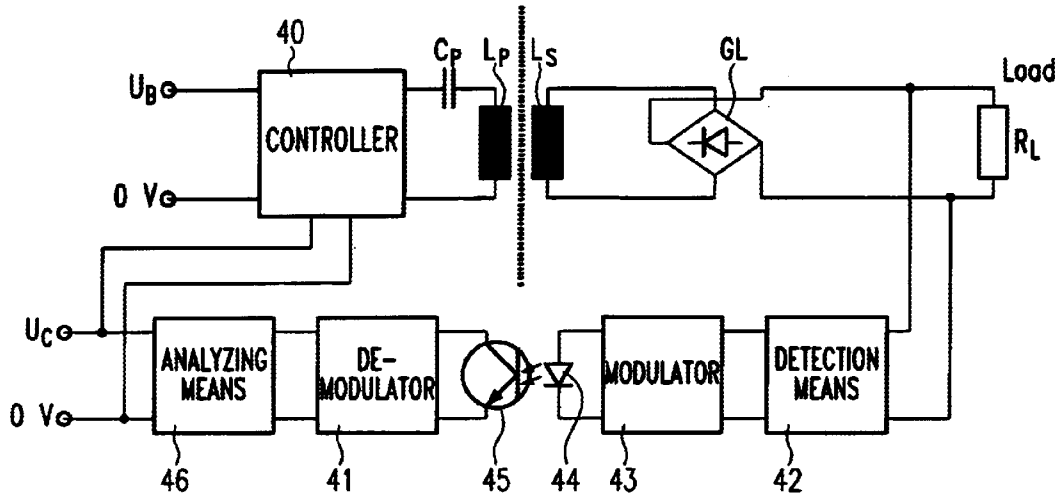


Fig.4

INDUCTIVE FEEDBACK

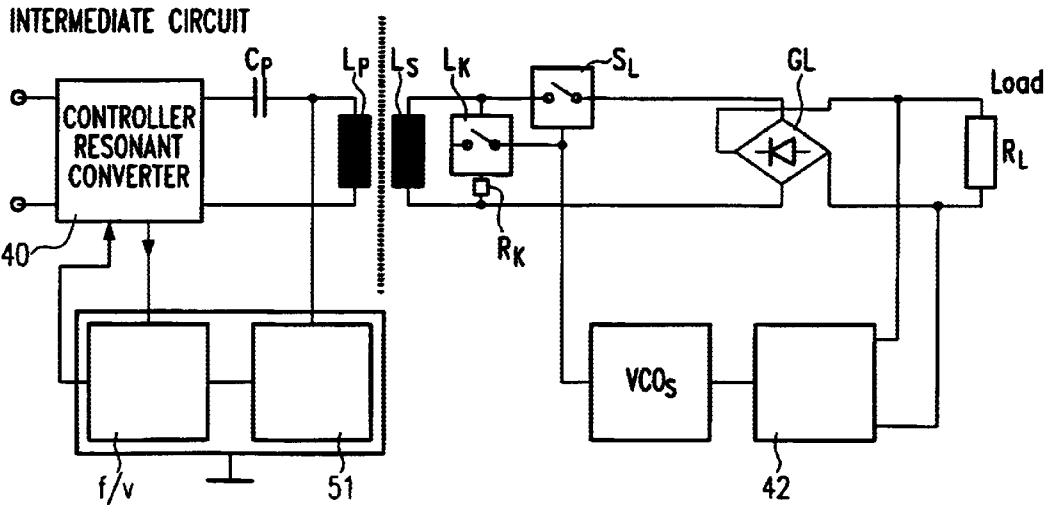


Fig.5

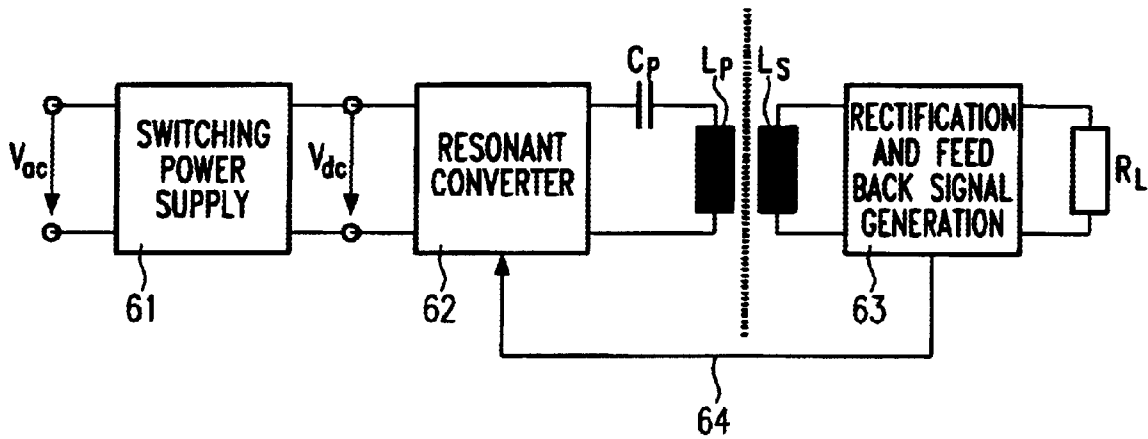


Fig.6
(prior art)

Explore Litigation Insights

Docket Alarm provides insights to develop a more informed litigation strategy and the peace of mind of knowing you're on top of things.

Real-Time Litigation Alerts



Keep your litigation team up-to-date with **real-time alerts** and advanced team management tools built for the enterprise, all while greatly reducing PACER spend.

Our comprehensive service means we can handle Federal, State, and Administrative courts across the country.

Advanced Docket Research



With over 230 million records, Docket Alarm's cloud-native docket research platform finds what other services can't. Coverage includes Federal, State, plus PTAB, TTAB, ITC and NLRB decisions, all in one place.

Identify arguments that have been successful in the past with full text, pinpoint searching. Link to case law cited within any court document via Fastcase.

Analytics At Your Fingertips



Learn what happened the last time a particular judge, opposing counsel or company faced cases similar to yours.

Advanced out-of-the-box PTAB and TTAB analytics are always at your fingertips.

API

Docket Alarm offers a powerful API (application programming interface) to developers that want to integrate case filings into their apps.

LAW FIRMS

Build custom dashboards for your attorneys and clients with live data direct from the court.

Automate many repetitive legal tasks like conflict checks, document management, and marketing.

FINANCIAL INSTITUTIONS

Litigation and bankruptcy checks for companies and debtors.

E-DISCOVERY AND LEGAL VENDORS

Sync your system to PACER to automate legal marketing.