




Diabetic Retinopathy What You Should Know



U.S. DEPARTMENT OF HEALTH AND HUMAN SERVICES
National Institutes of Health
National Eye Institute



The National Eye Institute (NEI) conducts and supports research that leads to sight-saving treatments and plays a key role in reducing visual impairment and blindness. NEI is part of the National Institutes of Health, an agency of the U.S. Department of Health and Human Services.

For more information, contact—

National Eye Institute
National Institutes of Health
2020 Vision Place
Bethesda, MD 20892-3655
Telephone: 301-496-5248
Email: 2020@nei.nih.gov
Website: www.nei.nih.gov

Contents



About Diabetic Retinopathy

1



Detection

3



Prevention and Treatment

5



What You Can Do

10



Current Research

12



Additional Resources

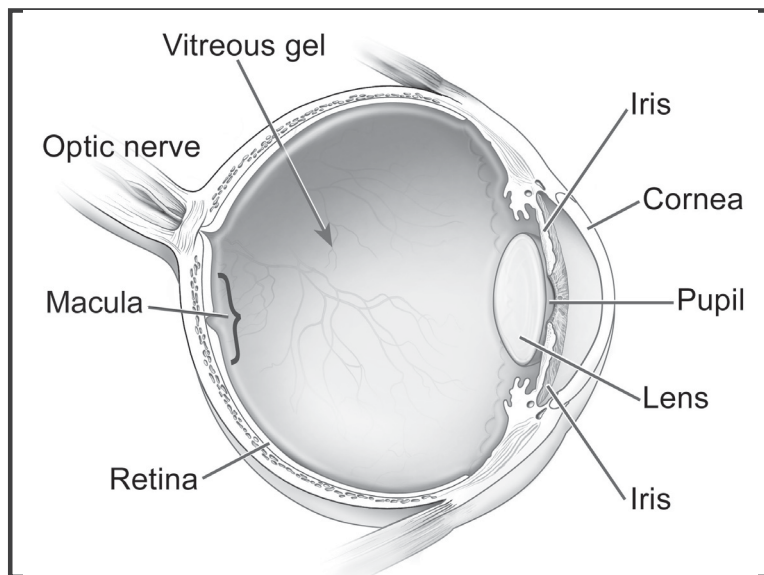
13





What is Diabetic Retinopathy?

Diabetic retinopathy is a complication of diabetes and the leading cause of vision impairment and blindness among working-age adults. It occurs when diabetes damages the tiny blood vessels in the retina, which is the light-sensitive tissue at the back of the eye. Diabetic retinopathy may lead to diabetic macular edema (DME), which is a swelling in an area of the retina called the macula.



Diabetic retinopathy involves damage to the retina, the light-sensitive tissue at the back of the eye.

What causes diabetic retinopathy?

Chronically high blood sugar from diabetes is associated with damage to the tiny blood vessels in the retina, leading to diabetic retinopathy. The retina detects light and converts it to signals sent through the optic nerve to the brain. Diabetic retinopathy can cause blood vessels in the retina to leak fluid

Explore Litigation Insights

Docket Alarm provides insights to develop a more informed litigation strategy and the peace of mind of knowing you're on top of things.

Real-Time Litigation Alerts



Keep your litigation team up-to-date with **real-time alerts** and advanced team management tools built for the enterprise, all while greatly reducing PACER spend.

Our comprehensive service means we can handle Federal, State, and Administrative courts across the country.

Advanced Docket Research



With over 230 million records, Docket Alarm's cloud-native docket research platform finds what other services can't. Coverage includes Federal, State, plus PTAB, TTAB, ITC and NLRB decisions, all in one place.

Identify arguments that have been successful in the past with full text, pinpoint searching. Link to case law cited within any court document via Fastcase.

Analytics At Your Fingertips



Learn what happened the last time a particular judge, opposing counsel or company faced cases similar to yours.

Advanced out-of-the-box PTAB and TTAB analytics are always at your fingertips.

API

Docket Alarm offers a powerful API (application programming interface) to developers that want to integrate case filings into their apps.

LAW FIRMS

Build custom dashboards for your attorneys and clients with live data direct from the court.

Automate many repetitive legal tasks like conflict checks, document management, and marketing.

FINANCIAL INSTITUTIONS

Litigation and bankruptcy checks for companies and debtors.

E-DISCOVERY AND LEGAL VENDORS

Sync your system to PACER to automate legal marketing.