



US007010581B2

(12) **United States Patent**
Brown et al.

(10) **Patent No.:** **US 7,010,581 B2**
(45) **Date of Patent:** **Mar. 7, 2006**

(54) **METHOD AND SYSTEM FOR PROVIDING BROWSER FUNCTIONS ON A WEB PAGE FOR CLIENT-SPECIFIC ACCESSIBILITY**

6,138,150 A 10/2000 Nichols et al.
6,459,364 B1 * 10/2002 Gupta 340/407.1
6,665,642 B1 * 12/2003 Kanevsky et al. 704/260
6,714,963 B1 * 3/2004 Levine et al. 709/203
6,781,571 B1 * 8/2004 Bates et al. 345/159
6,925,595 B1 * 8/2005 Whitedge et al. 715/513

(75) Inventors: **Frances C. Brown**, Austin, TX (US);
Susan Crayne, Hartsdale, NY (US);
Samuel R. Detweiler, Austin, TX (US);
Peter Gustav Fairweather, Yorktown Heights, NY (US); **Vicki Lynne Hanson**, Chappaqua, NY (US);
Richard Scott Schwerdtfeger, Round Rock, TX (US); **Beth Rush Tibbitts**, Lexington, KY (US)

FOREIGN PATENT DOCUMENTS

WO WO 00/03525 1/2000
WO WO 00/49530 8/2000

OTHER PUBLICATIONS

Chisholm, Wendy et al., "Web Content Accessibility Guidelines" W3C Working Draft, www.w3.org/TR/1999/WD-WAI-PAGEAUTH-19990217, p 1-17, Feb 1999.*

(73) Assignee: **International Business Machines Corporation**, Armonk, NY (US)

(Continued)

(*) Notice: Subject to any disclaimer, the term of this patent is extended or adjusted under 35 U.S.C. 154(b) by 842 days.

Primary Examiner—Patrice Winder
(74) *Attorney, Agent, or Firm*—Robert M. Carwell; Dillon & Yudell LLP

(21) Appl. No.: **09/961,938**

(57) **ABSTRACT**

(22) Filed: **Sep. 24, 2001**

(65) **Prior Publication Data**

US 2003/0061309 A1 Mar. 27, 2003

(51) **Int. Cl.**
G06F 15/16 (2006.01)

(52) **U.S. Cl.** **709/218**; 709/246; 715/864;
715/865

(58) **Field of Classification Search** 709/218,
709/228, 246; 704/271; 715/864, 865, 542
See application file for complete search history.

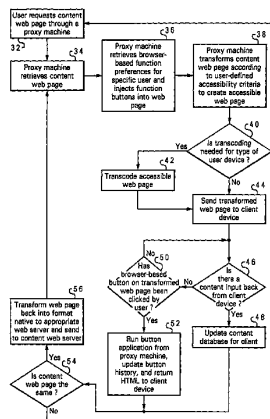
(56) **References Cited**

U.S. PATENT DOCUMENTS

5,899,975 A * 5/1999 Nielsen 704/270.1
5,918,013 A 6/1999 Mighdoll et al.
5,983,273 A 11/1999 White et al.
5,996,022 A 11/1999 Krueger et al.
6,038,595 A 3/2000 Ortony

A method and system that provide browser-based functions by injected into a web page a control button, form text field or similar browser-based function control such that both the browser controls and the content of the web page can be transformed for accessibility. A proxy machine retrieves a web page for a user, and then injects the user selected browser function controls into the web page itself. The injected browser controls are supported by web-based application services, preferably resident in an intermediary proxy machine, for producing web content that is representative of that function. The web page is transformed into a style that is accessible for that particular user, such as magnifying the page, reformatting background schemes, etc. The user can select which browser function buttons are injected into the web page, and as the web page is transformed for accessibility, the browser controls on the page are likewise transformed.

1 Claim, 4 Drawing Sheets



OTHER PUBLICATIONS

Jacobs, Ian et al., "WAI Resource: HTML 4.0 Accessibility Improvements", W3C, www.w3.org/WAI/References/HTML4-access, Nov 2000.*

Charlton, M. et al., "User Requirements for the SIP in support of Deaf, Hard of Hearing and Speech-impaired Individuals", p 1-17, Aug 2002.*

Fairweather, P. G. et al., "From assistive technology to a Web accessibility service", ACM Assests 2002, p 4-8, Jul. 2002.*

"A Process for Selective Routing of Servlet Content to Transcoding Modules", Research Disclosure, (Jun. 1999/889), IBM Corporation, pp. 889-890.
Network Working Group, RFC 2616.

* cited by examiner

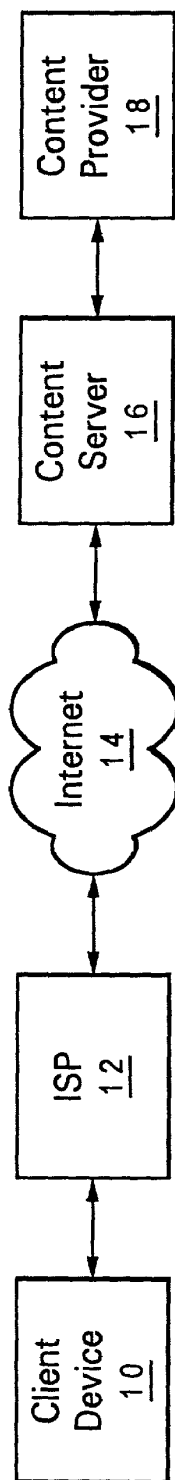


Fig. 1
Prior Art

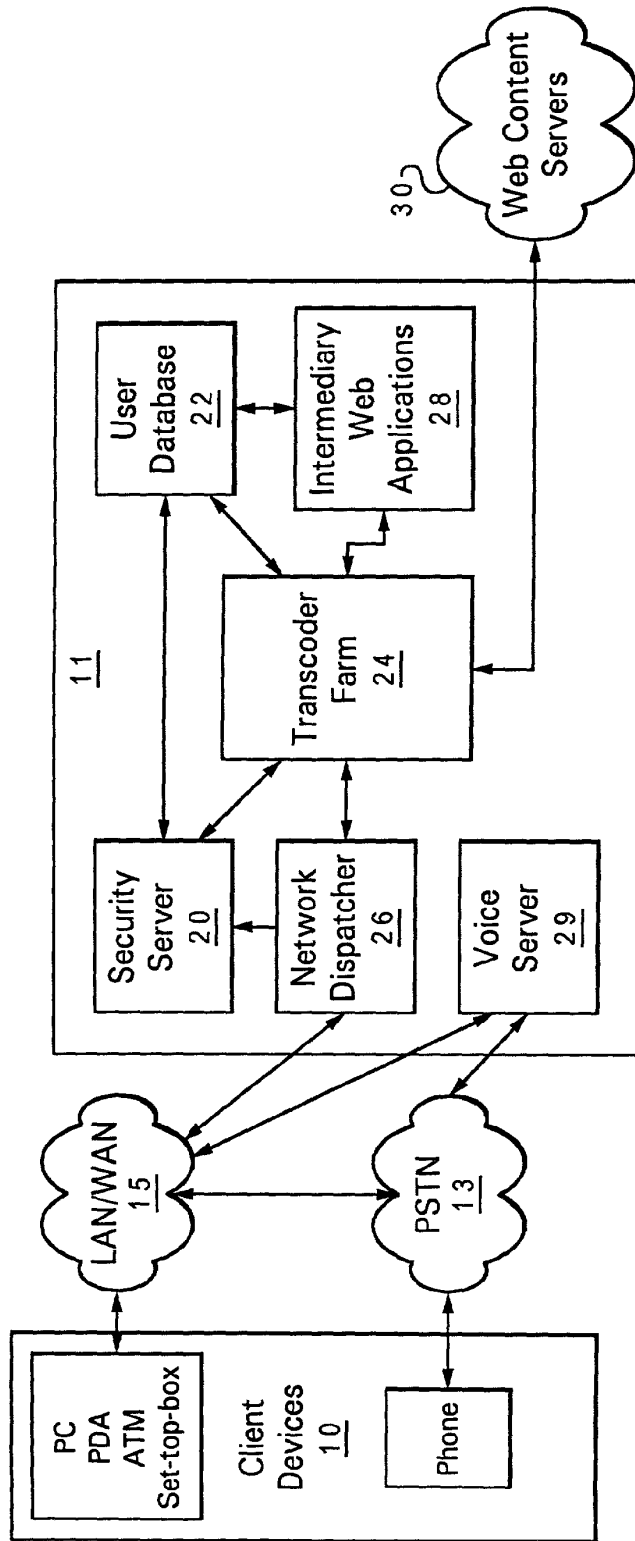
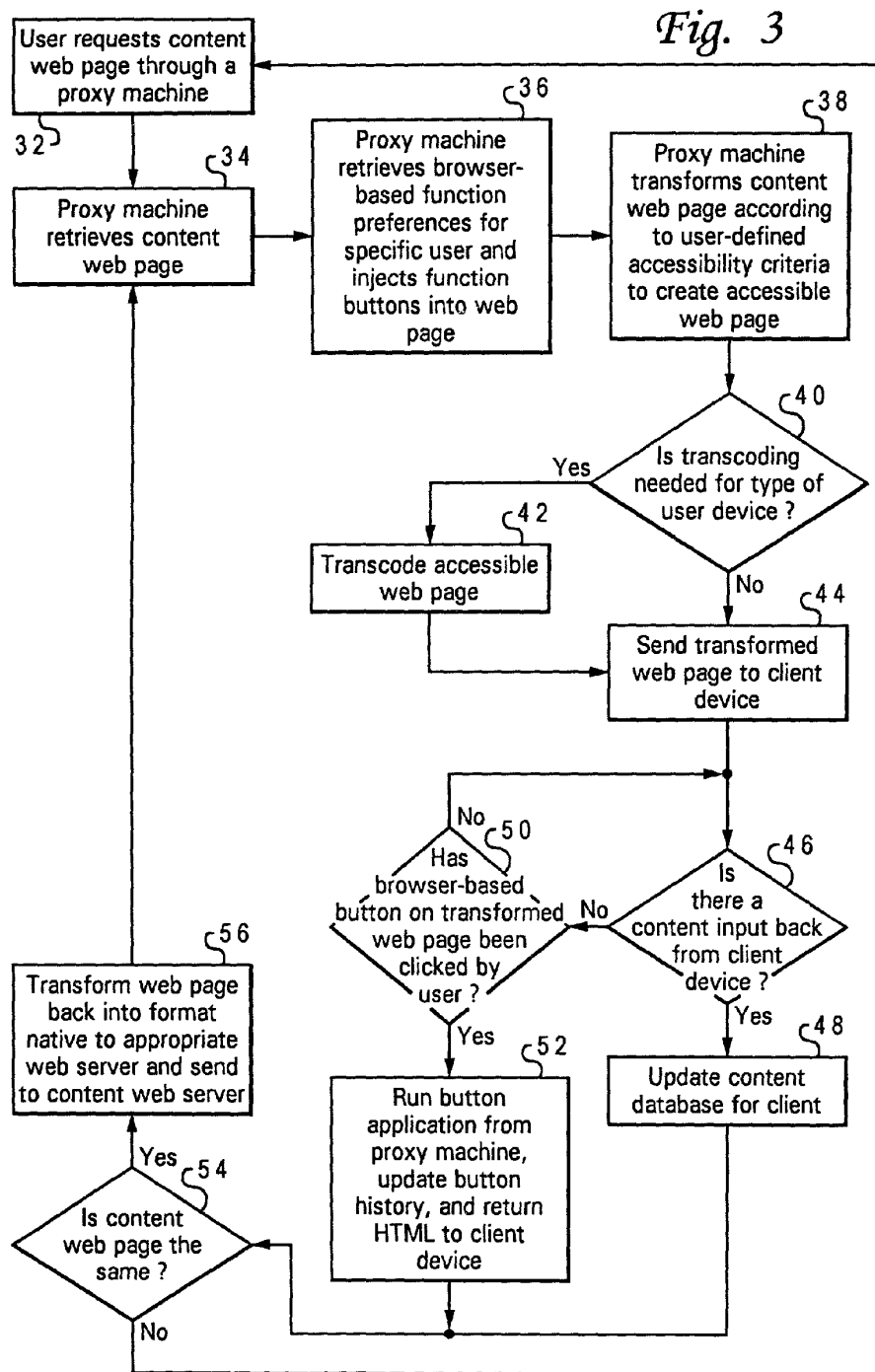


Fig. 2



Explore Litigation Insights

Docket Alarm provides insights to develop a more informed litigation strategy and the peace of mind of knowing you're on top of things.

Real-Time Litigation Alerts



Keep your litigation team up-to-date with **real-time alerts** and advanced team management tools built for the enterprise, all while greatly reducing PACER spend.

Our comprehensive service means we can handle Federal, State, and Administrative courts across the country.

Advanced Docket Research



With over 230 million records, Docket Alarm's cloud-native docket research platform finds what other services can't. Coverage includes Federal, State, plus PTAB, TTAB, ITC and NLRB decisions, all in one place.

Identify arguments that have been successful in the past with full text, pinpoint searching. Link to case law cited within any court document via Fastcase.

Analytics At Your Fingertips



Learn what happened the last time a particular judge, opposing counsel or company faced cases similar to yours.

Advanced out-of-the-box PTAB and TTAB analytics are always at your fingertips.

API

Docket Alarm offers a powerful API (application programming interface) to developers that want to integrate case filings into their apps.

LAW FIRMS

Build custom dashboards for your attorneys and clients with live data direct from the court.

Automate many repetitive legal tasks like conflict checks, document management, and marketing.

FINANCIAL INSTITUTIONS

Litigation and bankruptcy checks for companies and debtors.

E-DISCOVERY AND LEGAL VENDORS

Sync your system to PACER to automate legal marketing.