



US006789739B2

(12) **United States Patent**
Rosen

(10) **Patent No.:** **US 6,789,739 B2**
(45) **Date of Patent:** **Sep. 14, 2004**

(54) **THERMOSTAT SYSTEM WITH LOCATION DATA**

6,182,113 B1 1/2001 Narayanaswami 709/203
6,260,765 B1 * 7/2001 Natale et al. 236/47
6,336,142 B1 1/2002 Kato et al.
6,510,212 B2 * 1/2003 Ito et al. 379/102.03

(76) Inventor: **Howard Rosen**, 5756 Royalmount Avenue, Montreal, Quebec (CA), H4P 1K5

* cited by examiner

(*) Notice: Subject to any disclaimer, the term of this patent is extended or adjusted under 35 U.S.C. 154(b) by 0 days.

Primary Examiner—Harry B. Tanner
(74) *Attorney, Agent, or Firm*—David T. Bracken

(57) **ABSTRACT**

A thermostat system includes a temperature sensor, an LCD for selectively displaying an alphanumeric message and a processor having a memory for storing program and data information. In one embodiment, the data includes a table storing key terms on a predetermined subject. A communications interface connects the processor and a remote correspondent which is a source of current information. Periodically, communications is established with the remote correspondent to read the current information and parse the current information against the stored key terms. If a match is found, the current information is further searched for a value associated with the matched key term in order to display an alphanumeric message which shows a first message component representative of the connotation of the matched key term and a second message component representative of the associated value. In a variant embodiment, the remote correspondent provides a service periodically sending predetermined information for display on the LCD. In another variant embodiment, the thermostat system can use current information received from the first remote correspondent to send directive information to suitably change the temperature (or other parameter) set point at a second remote site.

(21) Appl. No.: **10/287,677**

(22) Filed: **Nov. 4, 2002**

(65) **Prior Publication Data**

US 2003/0150927 A1 Aug. 14, 2003

Related U.S. Application Data

(63) Continuation-in-part of application No. 10/075,886, filed on Feb. 13, 2002, now Pat. No. 6,619,555.

(51) **Int. Cl.**⁷ **G05D 23/00**; F23N 5/20

(52) **U.S. Cl.** **236/51**; 379/102.05; 236/46 R

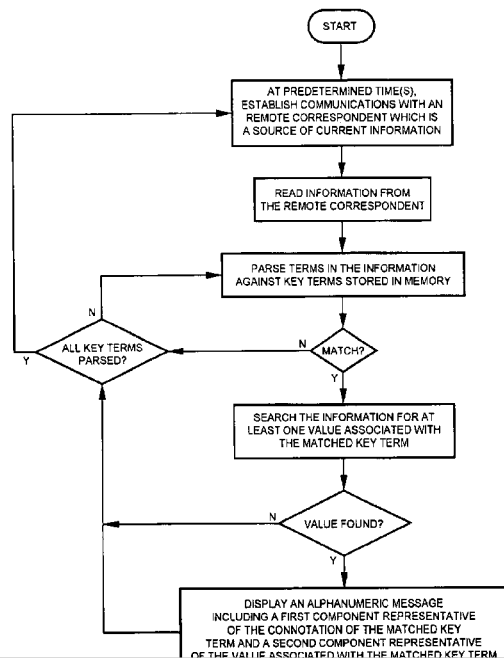
(58) **Field of Search** 236/51, 46 R; 455/420; 379/102.05, 102.5

(56) **References Cited**

U.S. PATENT DOCUMENTS

- 5,568,385 A 10/1996 Shelton
- 5,761,083 A * 6/1998 Brown, Jr. et al. 340/825.06
- 5,896,443 A 4/1999 Dichter 709/220
- 5,915,026 A * 6/1999 Mankovitz 340/49
- 5,999,882 A 12/1999 Simpson et al. 702/3
- 6,161,133 A 12/2000 Kikinis 379/93.08

12 Claims, 4 Drawing Sheets



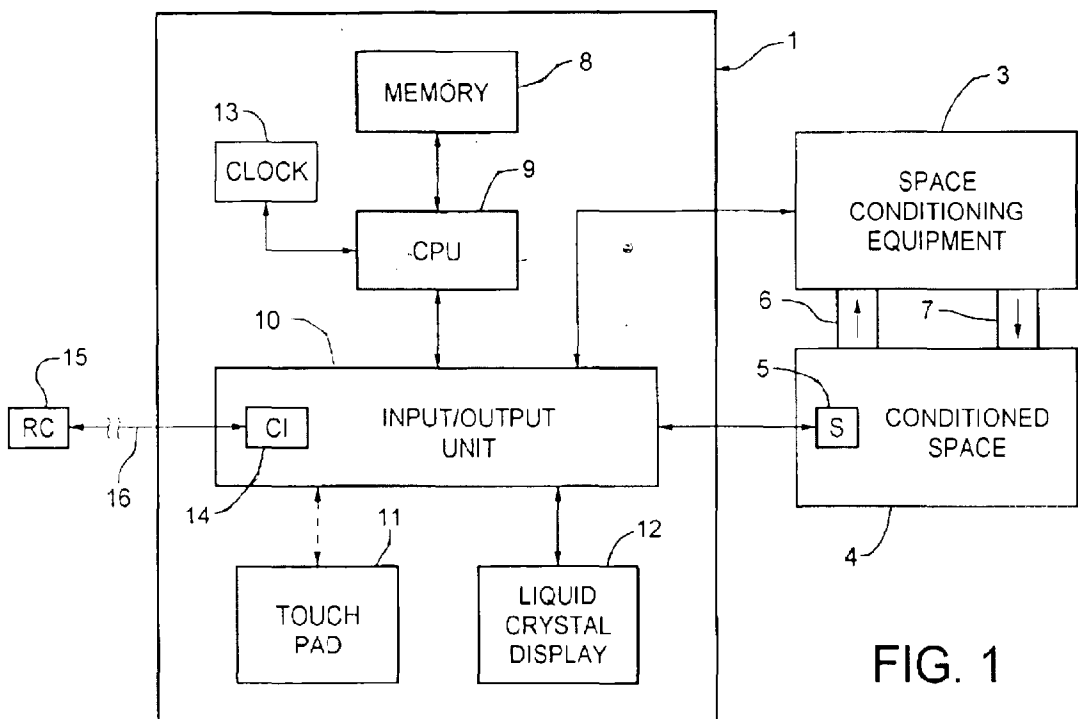


FIG. 1

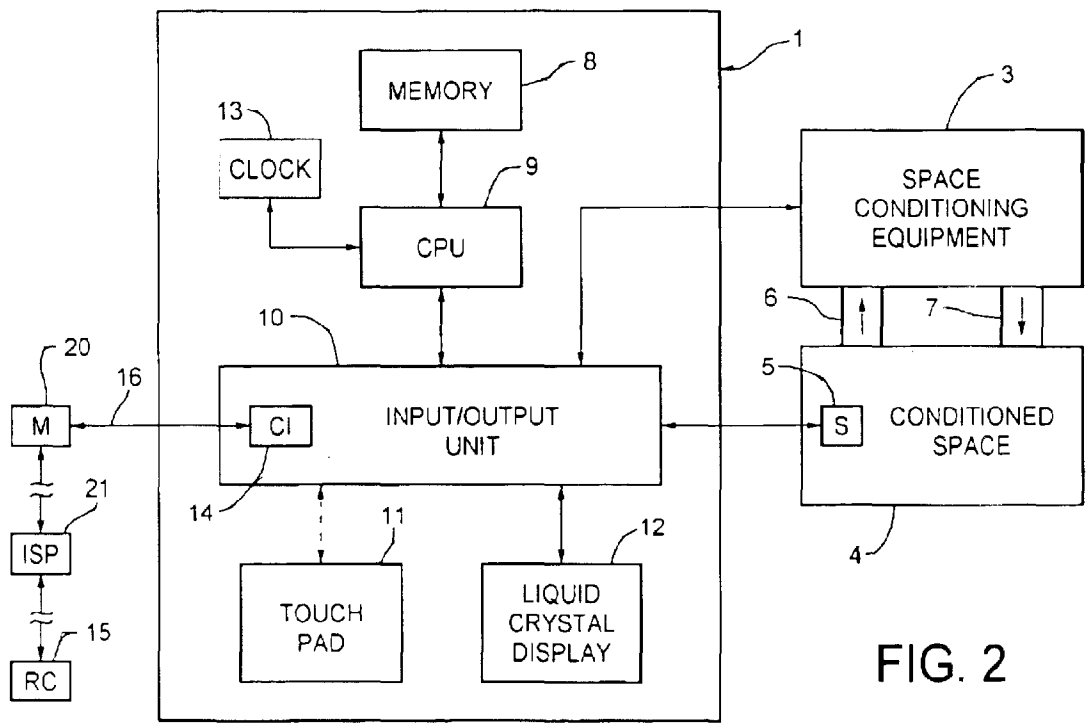
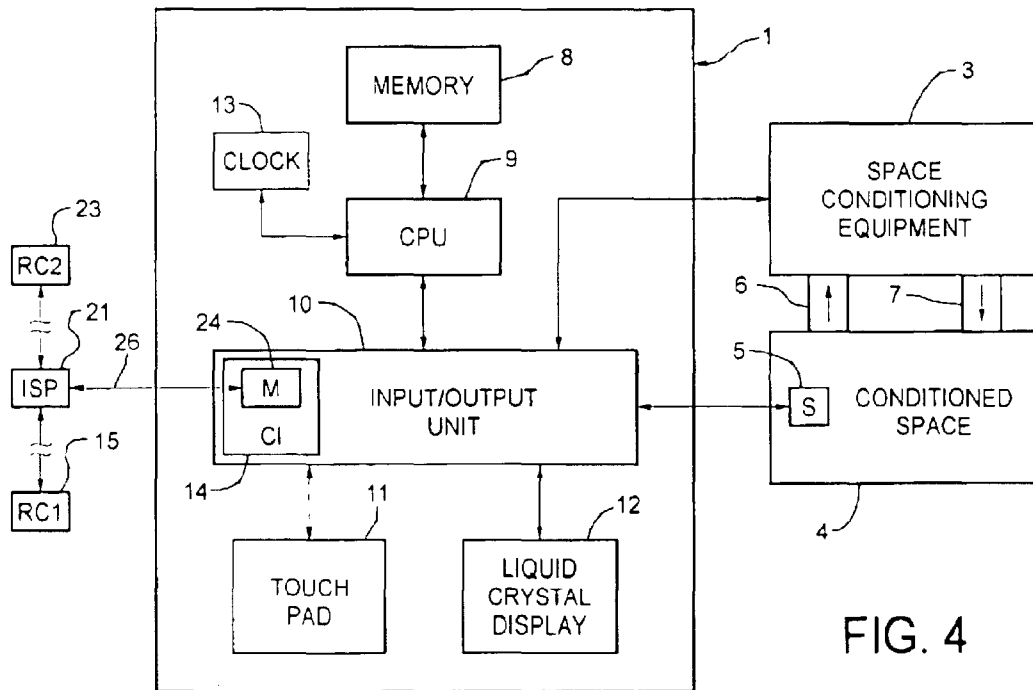
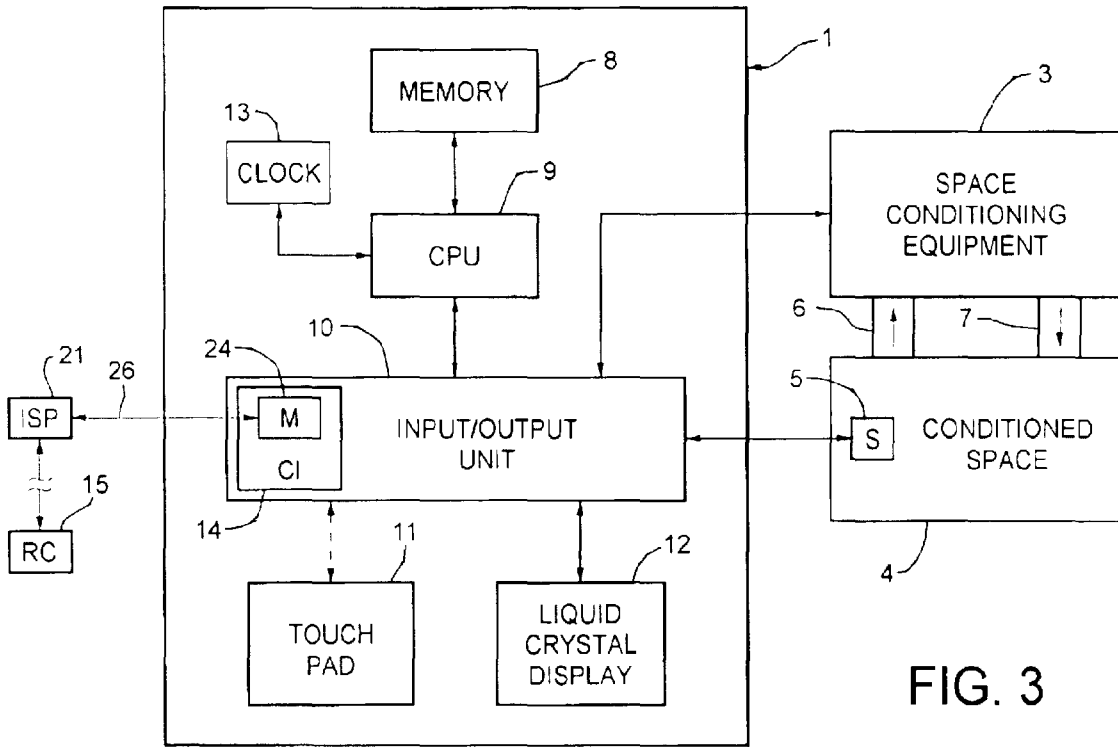


FIG. 2



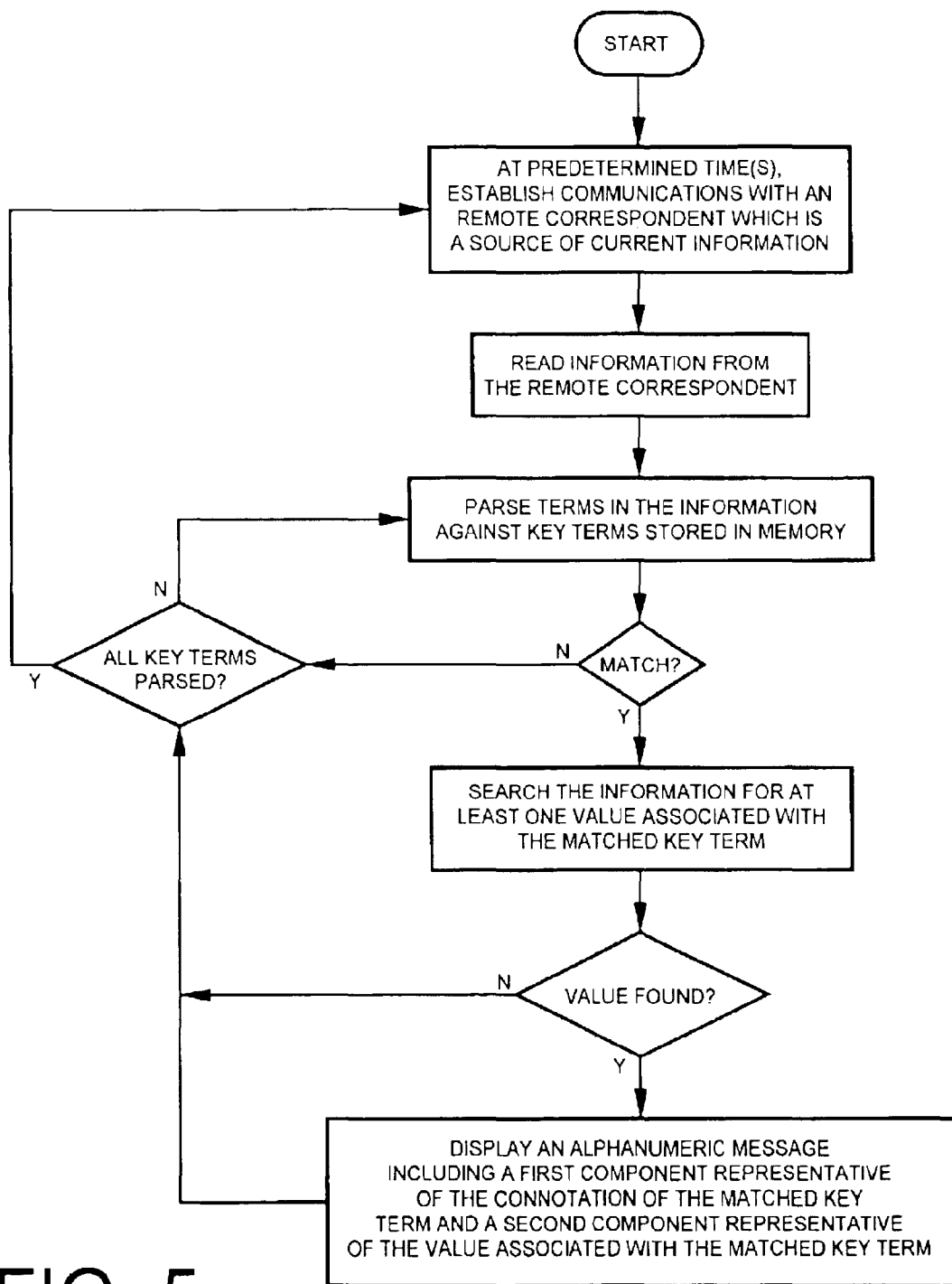
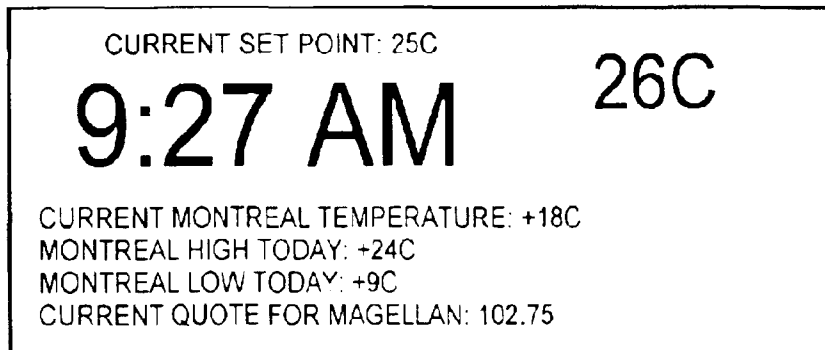


FIG. 5



12

FIG. 6

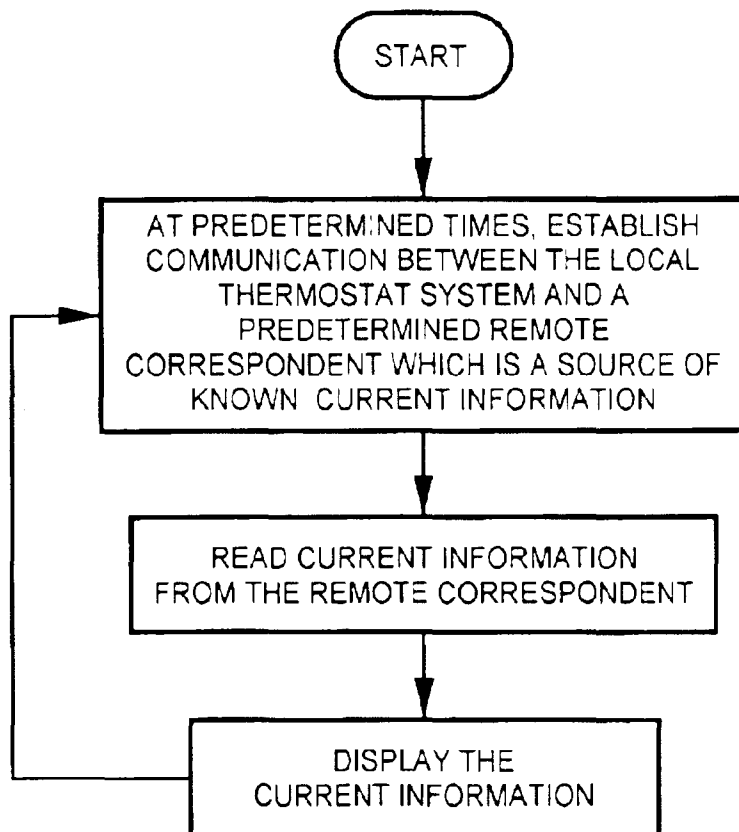


FIG. 7

Explore Litigation Insights

Docket Alarm provides insights to develop a more informed litigation strategy and the peace of mind of knowing you're on top of things.

Real-Time Litigation Alerts



Keep your litigation team up-to-date with **real-time alerts** and advanced team management tools built for the enterprise, all while greatly reducing PACER spend.

Our comprehensive service means we can handle Federal, State, and Administrative courts across the country.

Advanced Docket Research



With over 230 million records, Docket Alarm's cloud-native docket research platform finds what other services can't. Coverage includes Federal, State, plus PTAB, TTAB, ITC and NLRB decisions, all in one place.

Identify arguments that have been successful in the past with full text, pinpoint searching. Link to case law cited within any court document via Fastcase.

Analytics At Your Fingertips



Learn what happened the last time a particular judge, opposing counsel or company faced cases similar to yours.

Advanced out-of-the-box PTAB and TTAB analytics are always at your fingertips.

API

Docket Alarm offers a powerful API (application programming interface) to developers that want to integrate case filings into their apps.

LAW FIRMS

Build custom dashboards for your attorneys and clients with live data direct from the court.

Automate many repetitive legal tasks like conflict checks, document management, and marketing.

FINANCIAL INSTITUTIONS

Litigation and bankruptcy checks for companies and debtors.

E-DISCOVERY AND LEGAL VENDORS

Sync your system to PACER to automate legal marketing.