

[54] **HAND-MANIPULATED ELECTRONIC CAMERA TETHERED TO A PERSONAL COMPUTER**

5,040,068 8/1991 Parulski et al. 358/209
 5,065,229 11/1991 Tsai et al. 358/21 R
 5,086,344 2/1992 D'Luna et al. 358/213.15

[75] Inventors: **Kenneth A. Parulski, Rochester; Robert H. Hamel, Walworth; John J. Acello, East Rochester, all of N.Y.**

FOREIGN PATENT DOCUMENTS

0308075 8/1988 United Kingdom H04N 3/15

[73] Assignee: **Eastman Kodak Company, Rochester, N.Y.**

OTHER PUBLICATIONS

"User's Manual for Model 1 Digital Still Camera"; Dycam, Inc., 1991.
 User's Manual—Kodak CCD 4000B Sync Camera, Eastman Kodak Co., Apr. 1991.

[21] Appl. No.: **938,573**

[22] Filed: **Aug. 31, 1992**

Primary Examiner—Howard W. Britton
Attorney, Agent, or Firm—David M. Woods

Related U.S. Application Data

[63] Continuation of Ser. No. 805,220, Dec. 11, 1991, abandoned.

[57] ABSTRACT

[51] Int. Cl.⁶ **H04N 5/232**
 [52] U.S. Cl. **348/211; 348/376; 348/552**
 [58] Field of Search 358/442, 479, 310, 335; 348/64, 211, 220, 376, 362, 552; H04N 5/232

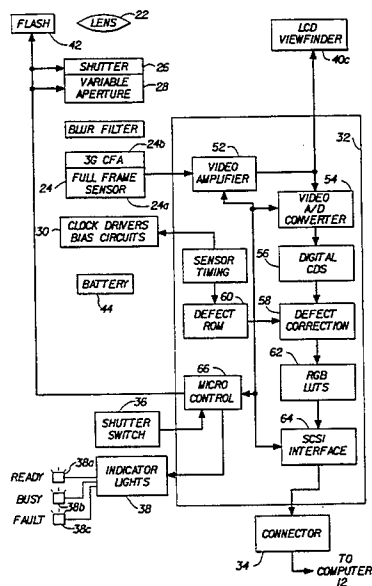
A portable, electronic camera is connectable to a computer for capturing an image and providing the captured image to the computer for storage therewith. The camera ergonomically acts like an independent, self-functioning peripheral device while in actuality depending on instructions from the computer. The camera is remotely linked to the computer, e.g., by a cable, thereby allowing mobility of the camera independent of the computer. The camera includes an electronic image sensor, and circuit for driving the sensor to generate an image signal that is applied to the computer through the remote link. The readiness of the computer to accept an image signal is manifested by operative device in the camera, which condition the camera for image capture in response to a status signal from the computer transmitted through the remote link. In one embodiment, a capture switch is positioned on or with the camera for user engagement, whereby the operative device inhibits actuation of the capture switch until receipt of the status signal. In another embodiment, the operative device energizes an exposure readiness indicator when the status signal is received.

References Cited

U.S. PATENT DOCUMENTS

3,993,865 11/1976 Browne et al. 358/473
 4,074,324 2/1978 Barrett 358/296
 4,581,761 4/1986 Ichinokawa et al. 382/13
 4,663,661 5/1987 Weldy et al. 358/44
 4,714,963 12/1987 Vogel 358/909
 4,738,526 4/1988 Larish 354/412
 4,751,583 6/1988 Levine 358/256
 4,805,037 2/1989 Noble 358/335
 4,827,347 5/1989 Bell 358/210
 4,849,811 7/1989 Kleinerman 358/903
 4,855,813 8/1989 Russell et al. 358/22
 4,858,014 8/1989 Zeevi 358/209
 4,901,364 2/1990 Faulkerson et al. 382/59
 4,903,132 2/1990 Yamawaki 358/209
 4,942,477 7/1990 Nakamura 358/401
 5,019,699 5/1991 Koenck 235/472
 5,023,635 6/1991 Nealon 354/76

21 Claims, 4 Drawing Sheets



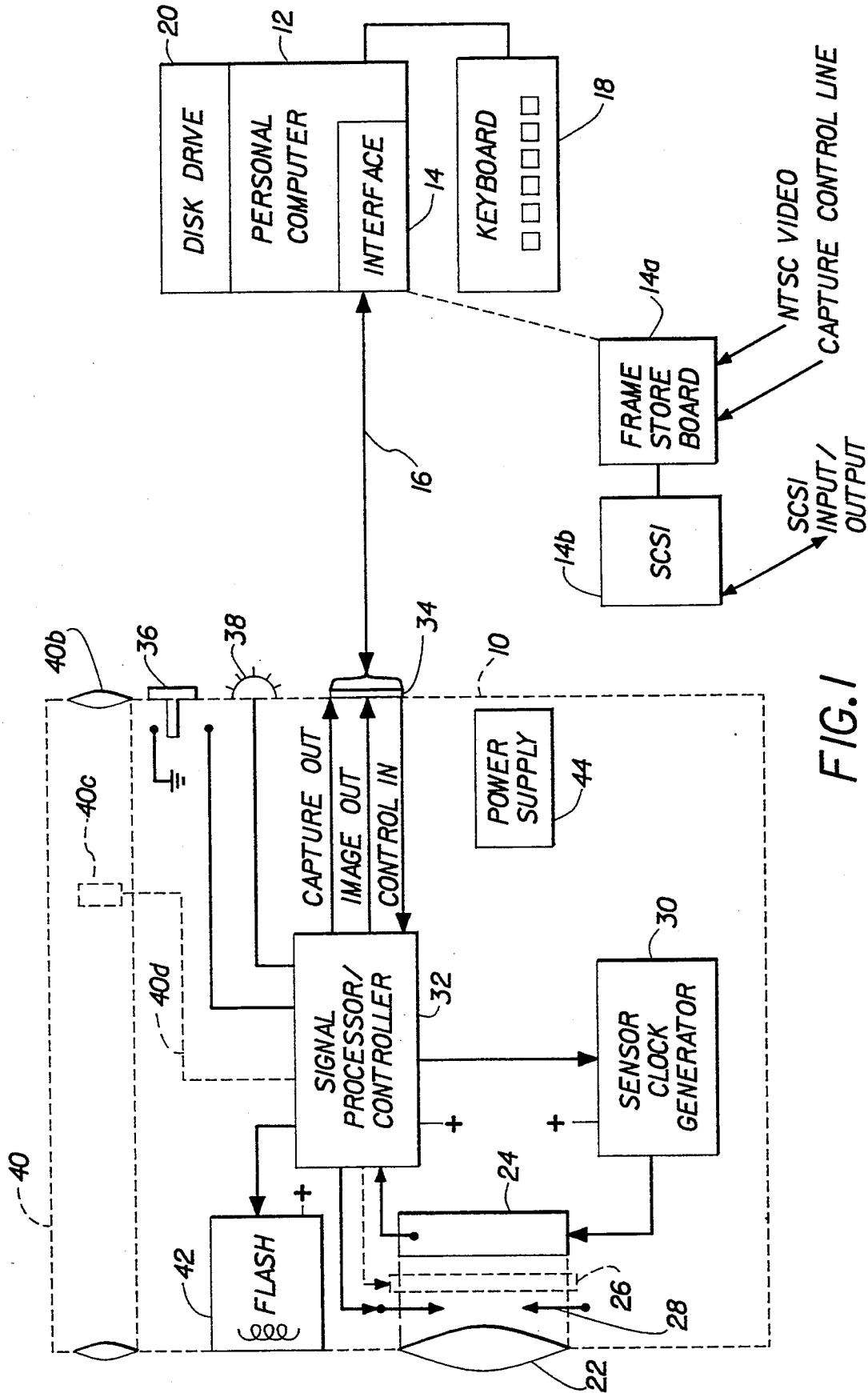


FIG. 1

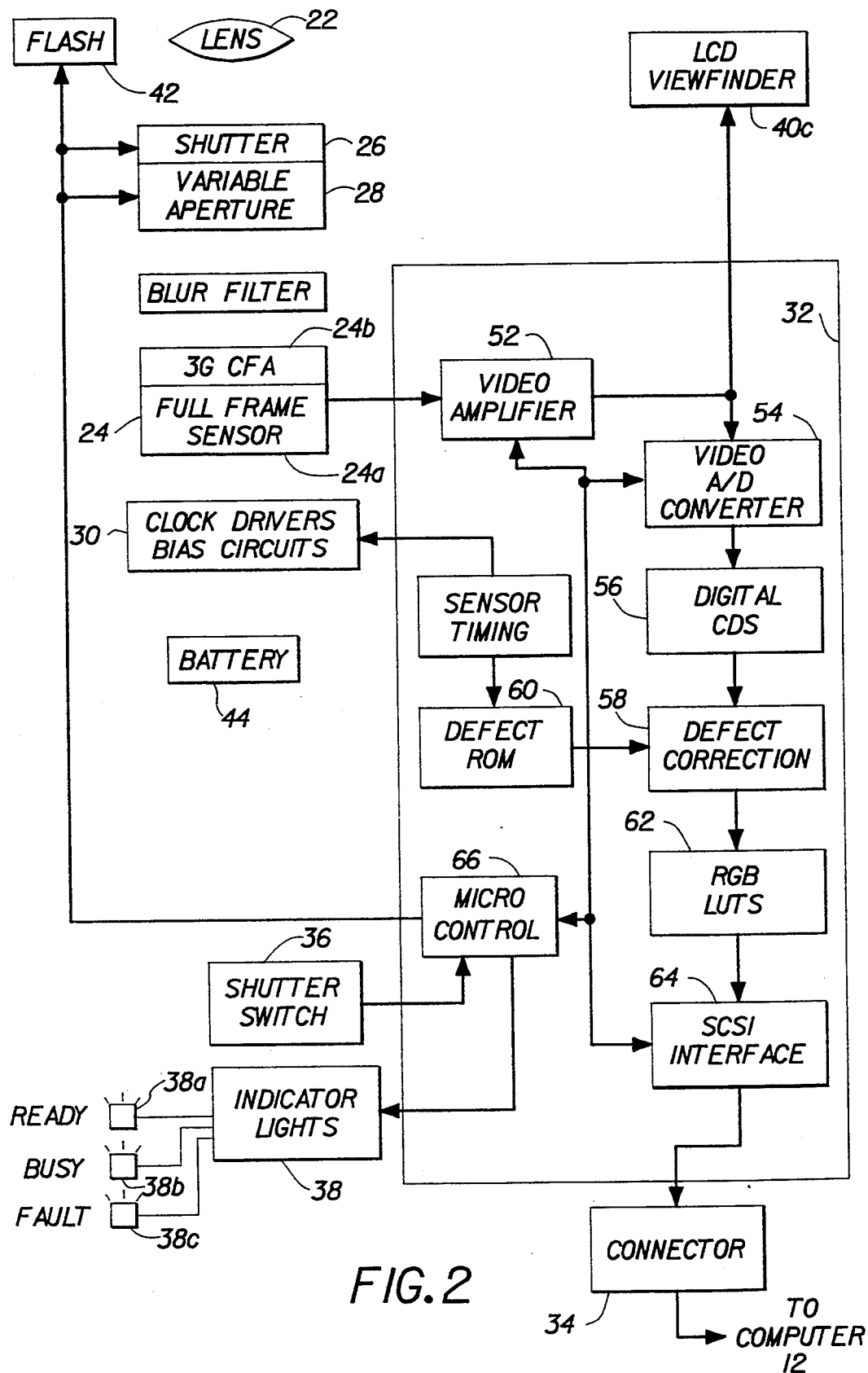


FIG. 2

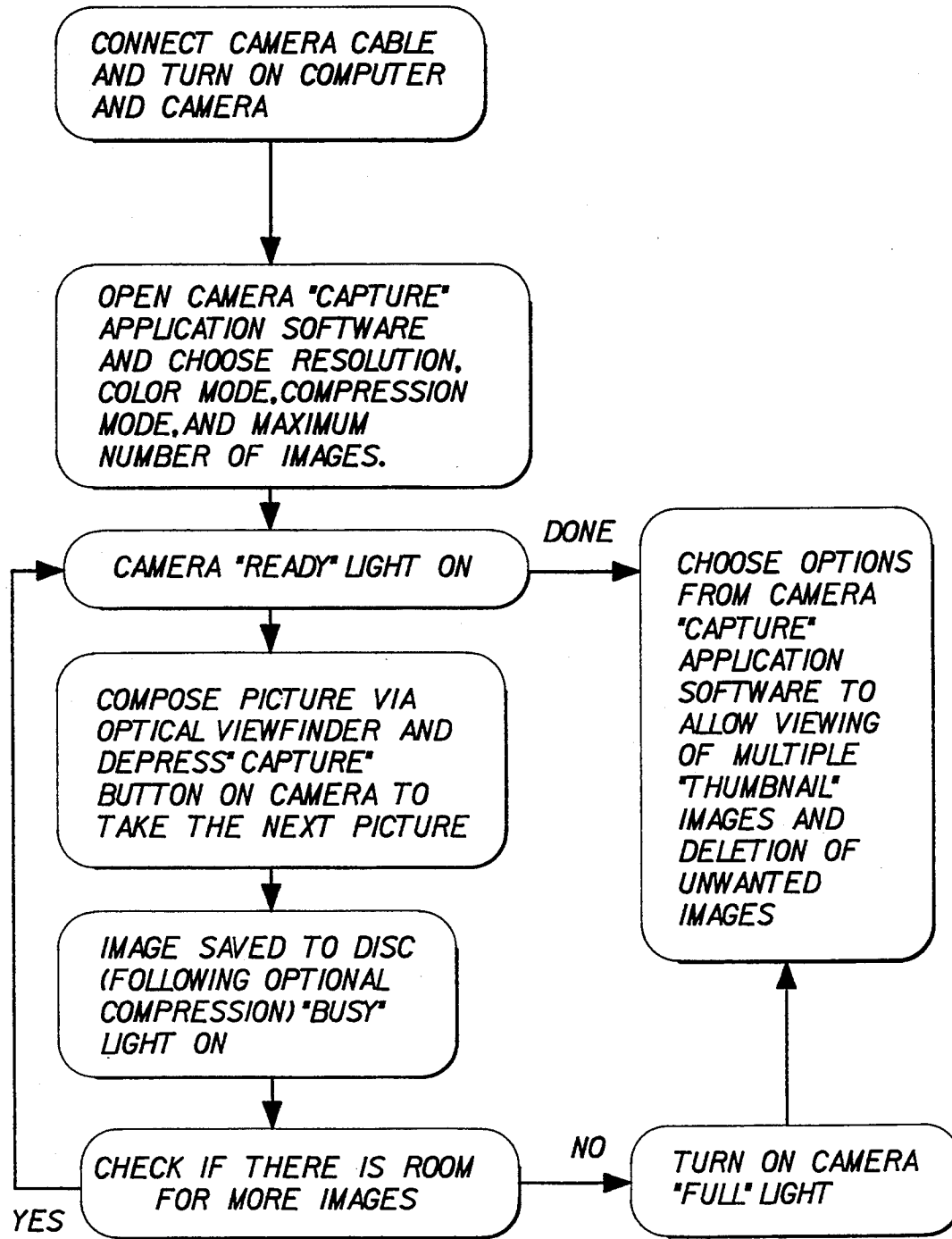


FIG.3

IMAGE NAME NEW_IMAGES

MAX. NUMBER OF IMAGES 10

MEMORY REQUIRED: 1 MBYTES

MEMORY AVAILABLE: 5 MBYTES

OK

QUIT

COMPRESSION
MODE

COMPRESSION ON

COMPRESSION OFF

RESOLUTION

768 X 512 PIXELS

384 X 256 PIXELS

192 X 128 PIXELS

COLOR MODE

24 BIT COLOR

8 BIT COLOR

8 BIT MONOCHROME

FIG. 4

Explore Litigation Insights

Docket Alarm provides insights to develop a more informed litigation strategy and the peace of mind of knowing you're on top of things.

Real-Time Litigation Alerts



Keep your litigation team up-to-date with **real-time alerts** and advanced team management tools built for the enterprise, all while greatly reducing PACER spend.

Our comprehensive service means we can handle Federal, State, and Administrative courts across the country.

Advanced Docket Research



With over 230 million records, Docket Alarm's cloud-native docket research platform finds what other services can't. Coverage includes Federal, State, plus PTAB, TTAB, ITC and NLRB decisions, all in one place.

Identify arguments that have been successful in the past with full text, pinpoint searching. Link to case law cited within any court document via Fastcase.

Analytics At Your Fingertips



Learn what happened the last time a particular judge, opposing counsel or company faced cases similar to yours.

Advanced out-of-the-box PTAB and TTAB analytics are always at your fingertips.

API

Docket Alarm offers a powerful API (application programming interface) to developers that want to integrate case filings into their apps.

LAW FIRMS

Build custom dashboards for your attorneys and clients with live data direct from the court.

Automate many repetitive legal tasks like conflict checks, document management, and marketing.

FINANCIAL INSTITUTIONS

Litigation and bankruptcy checks for companies and debtors.

E-DISCOVERY AND LEGAL VENDORS

Sync your system to PACER to automate legal marketing.