

(12) **United States Patent**
Lamego

(10) **Patent No.:** **US 10,219,754 B1**
(45) **Date of Patent:** **Mar. 5, 2019**

(54) **MODULATION AND DEMODULATION TECHNIQUES FOR A HEALTH MONITORING SYSTEM**

(58) **Field of Classification Search**
CPC A61B 5/0059; A61B 5/0084
See application file for complete search history.

(71) Applicant: **Apple Inc.**, Cupertino, CA (US)

(56) **References Cited**

(72) Inventor: **Marcelo M. Lamego**, Cupertino, CA (US)

U.S. PATENT DOCUMENTS

(73) Assignee: **Apple Inc.**, Cupertino, CA (US)

5,349,952 A * 9/1994 McCarthy A61B 5/0059
356/41
2012/0253155 A1* 10/2012 Diab A61B 5/14551
600/324

(*) Notice: Subject to any disclaimer, the term of this patent is extended or adjusted under 35 U.S.C. 154(b) by 0 days.

* cited by examiner

(21) Appl. No.: **14/621,268**

Primary Examiner — Hien Nguyen

(22) Filed: **Feb. 12, 2015**

(74) *Attorney, Agent, or Firm* — Brownstein Hyatt Farber Schreck, LLP

Related U.S. Application Data

(57) **ABSTRACT**

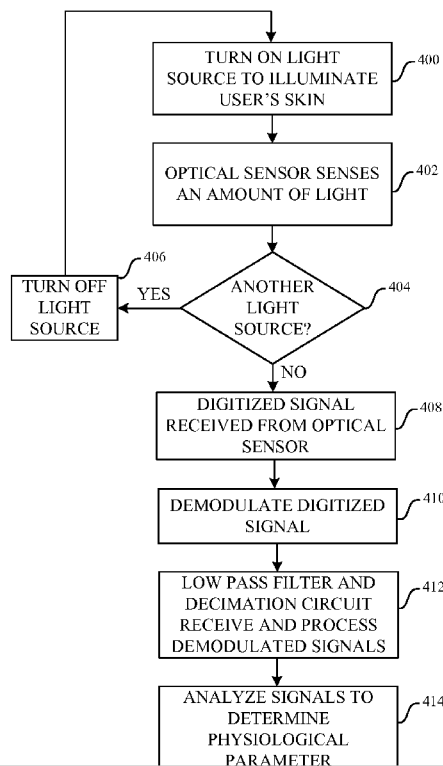
(60) Provisional application No. 62/047,818, filed on Sep. 9, 2014.

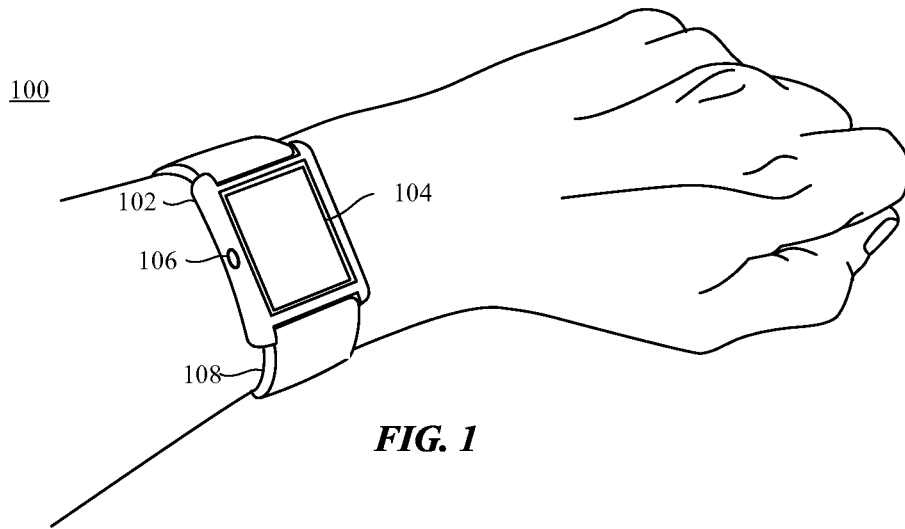
An electronic device includes one or more light sources for emitting light toward a body part of a user and one or more optical sensors for capturing light samples while each light source is turned on and for capturing dark samples while the light source(s) are turned off. A signal produced by the one or more optical sensors is demodulated produce multiple demodulated signals. Each demodulated signal is received by one or more decimation stages to produce a signal associated with each light source. Each signal associated with the light source(s) is analyzed to estimate or determine a physiological parameter of the user.

(51) **Int. Cl.**
A61B 5/00 (2006.01)

(52) **U.S. Cl.**
CPC **A61B 5/7228** (2013.01); **A61B 5/0059** (2013.01); **A61B 5/681** (2013.01); **A61B 5/7203** (2013.01); **A61B 5/725** (2013.01); **A61B 5/7225** (2013.01); **A61B 5/7278** (2013.01)

6 Claims, 9 Drawing Sheets





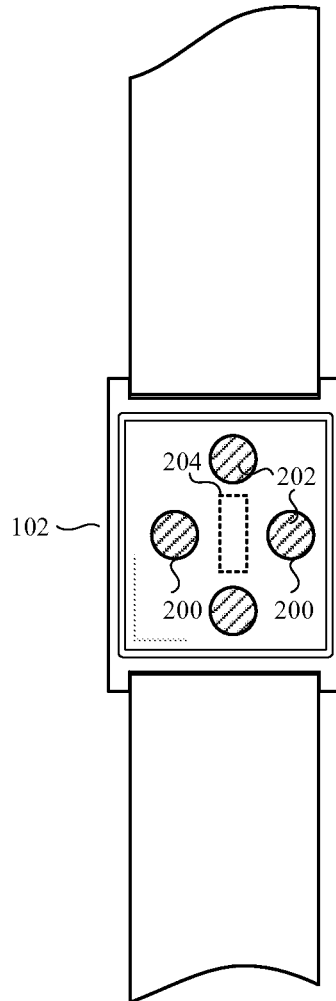


FIG. 2

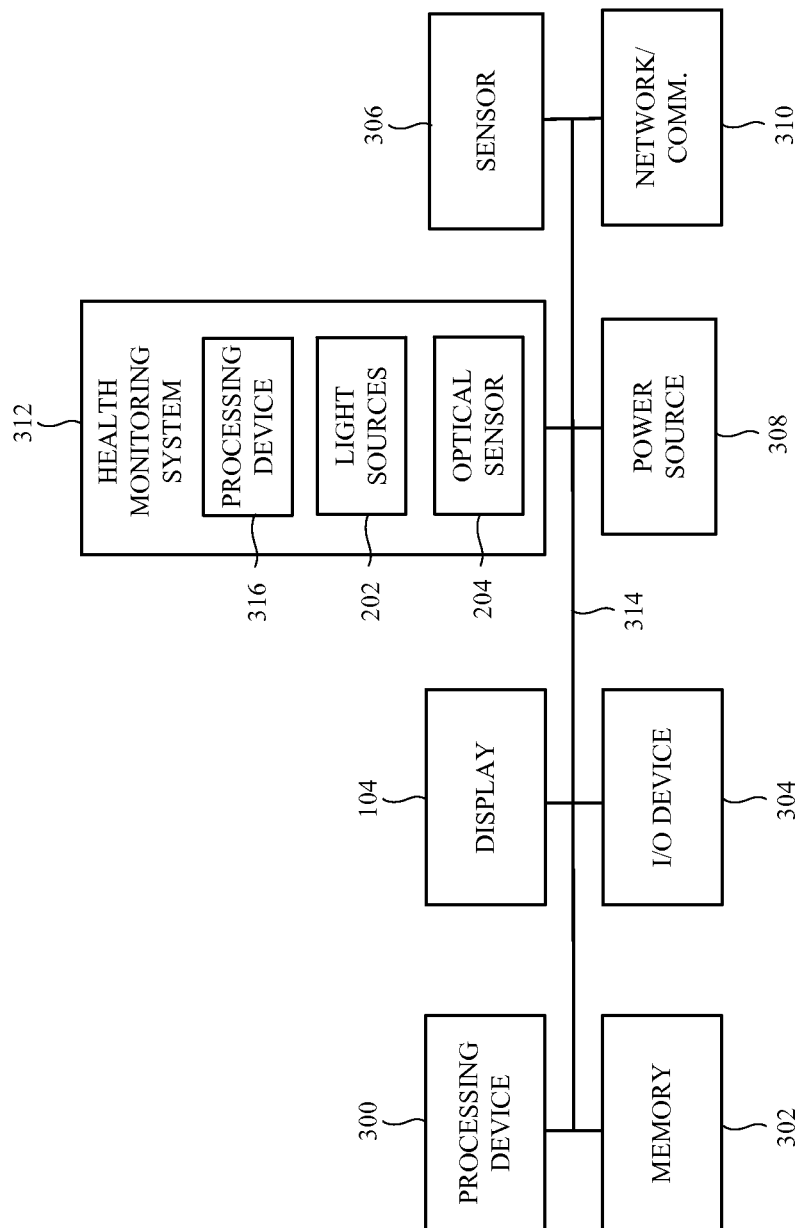


FIG. 3

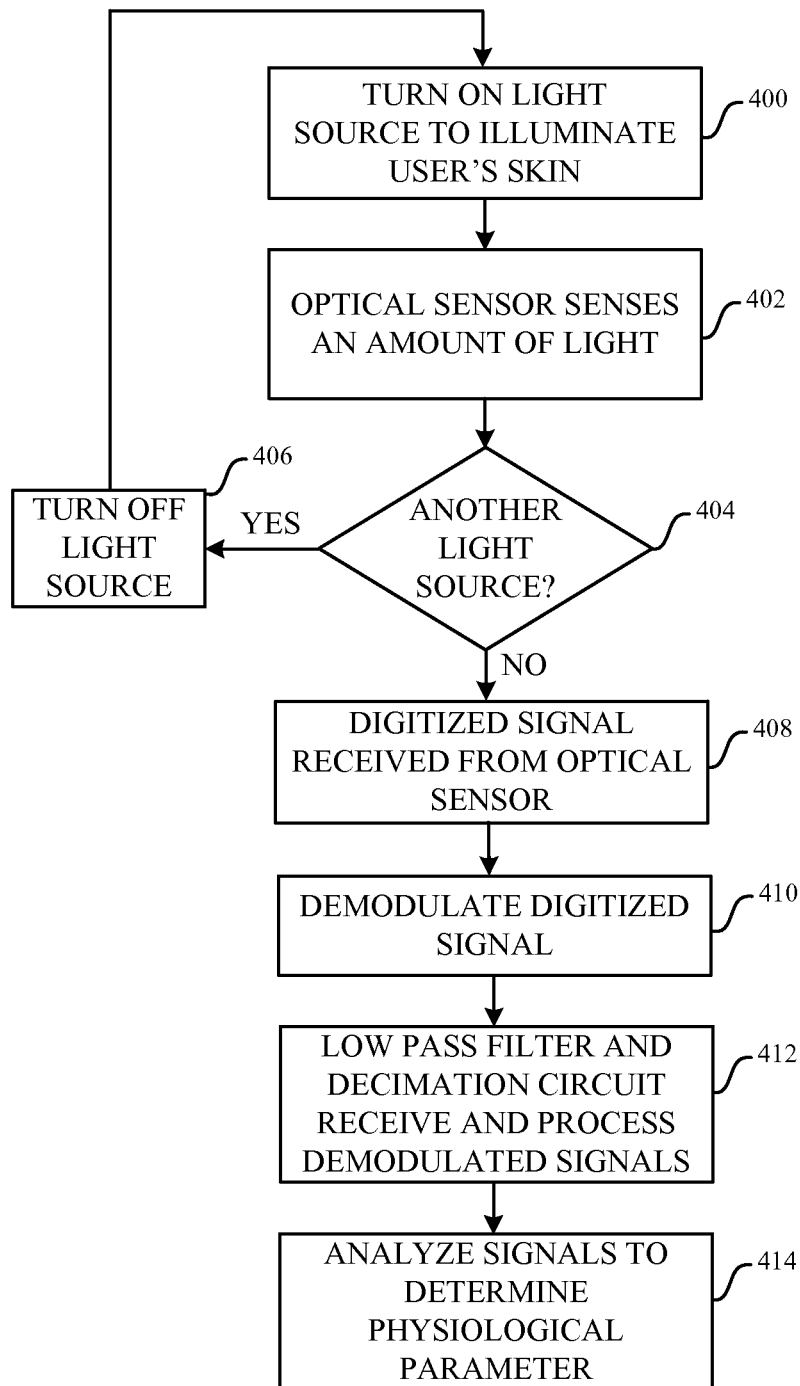


FIG. 4

Explore Litigation Insights

Docket Alarm provides insights to develop a more informed litigation strategy and the peace of mind of knowing you're on top of things.

Real-Time Litigation Alerts



Keep your litigation team up-to-date with **real-time alerts** and advanced team management tools built for the enterprise, all while greatly reducing PACER spend.

Our comprehensive service means we can handle Federal, State, and Administrative courts across the country.

Advanced Docket Research



With over 230 million records, Docket Alarm's cloud-native docket research platform finds what other services can't. Coverage includes Federal, State, plus PTAB, TTAB, ITC and NLRB decisions, all in one place.

Identify arguments that have been successful in the past with full text, pinpoint searching. Link to case law cited within any court document via Fastcase.

Analytics At Your Fingertips



Learn what happened the last time a particular judge, opposing counsel or company faced cases similar to yours.

Advanced out-of-the-box PTAB and TTAB analytics are always at your fingertips.

API

Docket Alarm offers a powerful API (application programming interface) to developers that want to integrate case filings into their apps.

LAW FIRMS

Build custom dashboards for your attorneys and clients with live data direct from the court.

Automate many repetitive legal tasks like conflict checks, document management, and marketing.

FINANCIAL INSTITUTIONS

Litigation and bankruptcy checks for companies and debtors.

E-DISCOVERY AND LEGAL VENDORS

Sync your system to PACER to automate legal marketing.