



(19) **United States**

(12) **Patent Application Publication** (10) **Pub. No.: US 2005/0267346 A1**

Faber et al.

(43) **Pub. Date:**

Dec. 1, 2005

(54) **NON-INVASIVE BLOOD COMPONENT MEASUREMENT SYSTEM**

(52) **U.S. Cl. 600/322; 600/310**

(75) Inventors: **Ralf T. Faber**, Lexington, MA (US);
Erik J. Schwendeman, Charlton, MA (US);
Guangming Wang, Bedford, MA (US)

(57) **ABSTRACT**

Non-invasive, optical apparatus and methods for the direct measurement of hemoglobin derivatives and other analyte concentration levels in blood using diffuse reflection and transmission spectroscopy in the wavelength region 400-1350 nm which includes the transparent tissue window from approximately 610 to 1311 nanometers and, using diffuse reflection spectroscopy, the mid-infrared region from 4.3-12 microns in wavelength. Large area light collection techniques are utilized to provide a much larger pulsate signal than can be obtain with current sensor technology. Sensors used in separate or simultaneous precision measurements of both diffuse reflection and transmission, either separately or simultaneously, from pulsate, blood-perfused tissue for the subsequent determination of the blood analytes concentrations such as arterial blood oxygen saturation (SaO₂), carboxyhemoglobin (COHb), oxyhemoglobin (OHb), deoxyhemoglobin (dOHb), methemoglobin (metHb), water (H₂O), hematocrit (HCT), glucose, cholesterol and proteins such as albumin and other analytes components.

Correspondence Address:
EDWARDS & ANGELL, LLP
P.O. BOX 55874
BOSTON, MA 02205 (US)

(73) Assignee: **3Wave Optics, LLC**

(21) Appl. No.: **11/048,005**

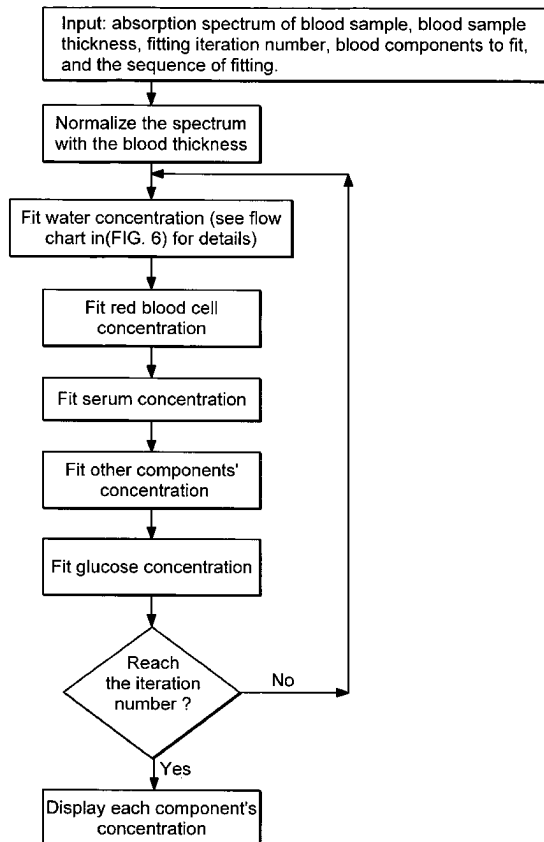
(22) Filed: **Jan. 31, 2005**

Related U.S. Application Data

(60) Provisional application No. 60/540,663, filed on Jan. 30, 2004.

Publication Classification

(51) **Int. Cl.⁷ A61B 5/00**



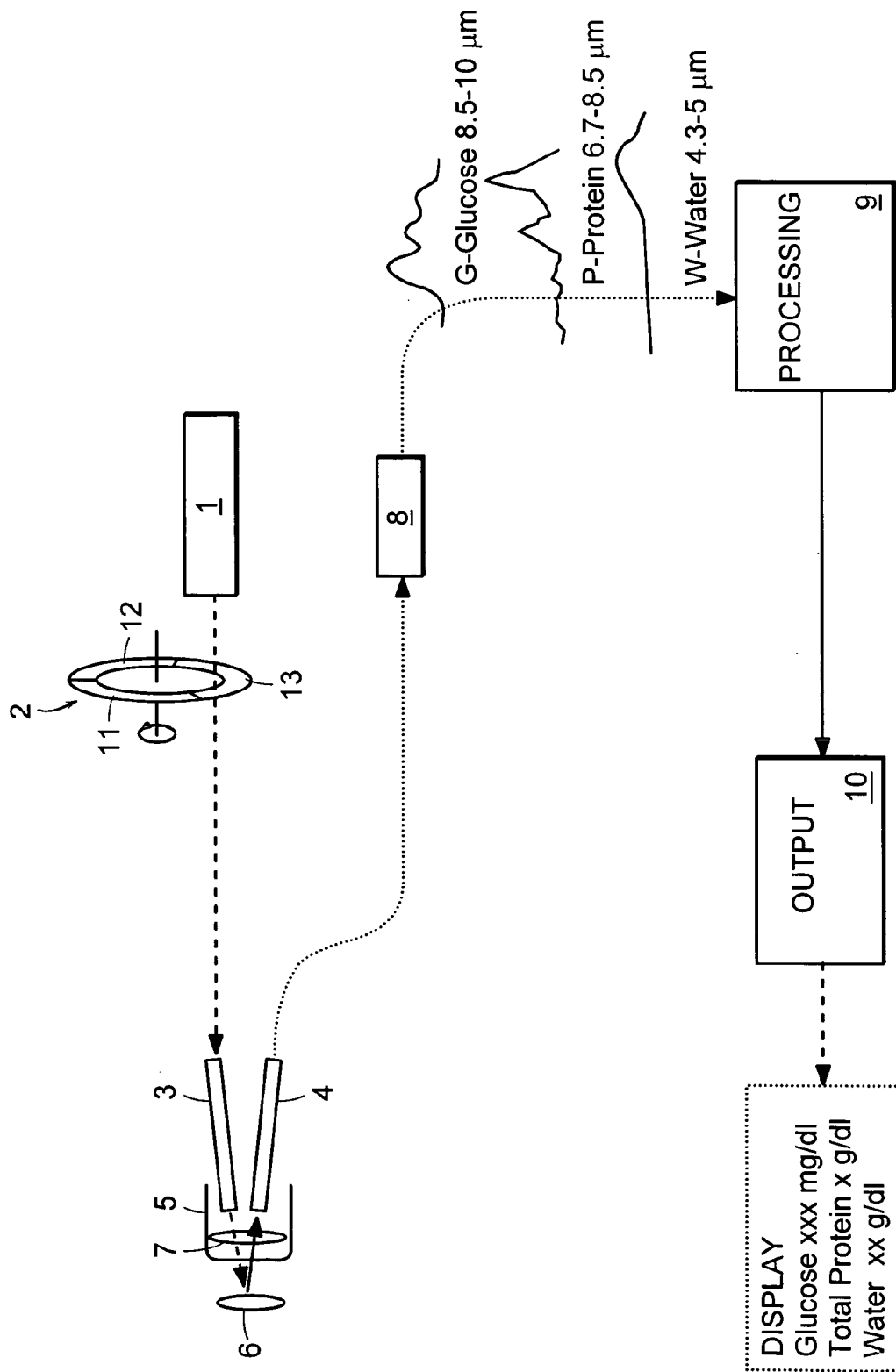


FIG. 1

Linear Variable Bandpass Filter
(Center Wavelength (CWL) Continuously
Changing in a Linear Fashion)

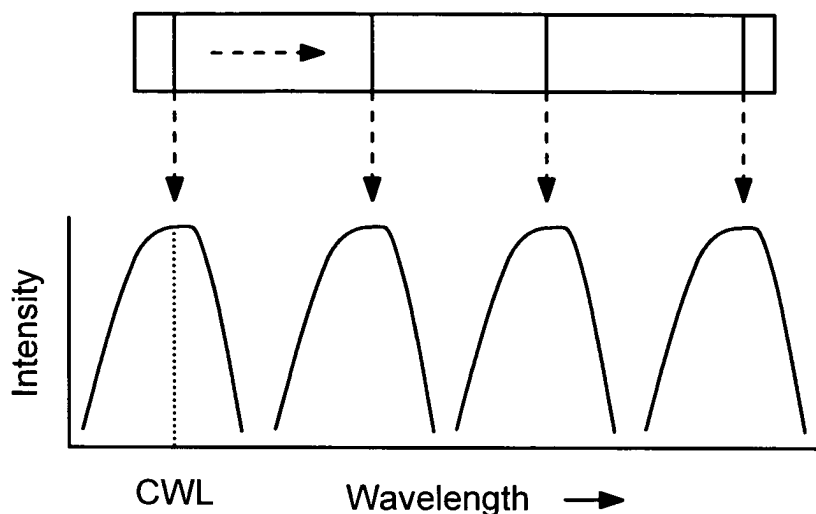


FIG. 2A

Circular Variable Bandpass Filter
(Center Wavelength (CWL)
Continuously Changing in a
Circumferential Fashion)

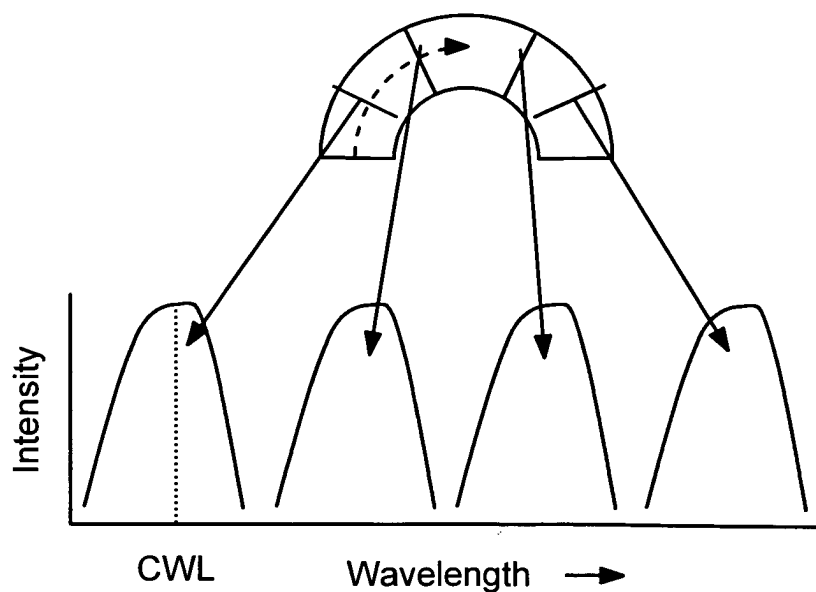


FIG. 2B

Discrete Bandpass Filters
(Each Filter Separate and Mounted in Wheel)

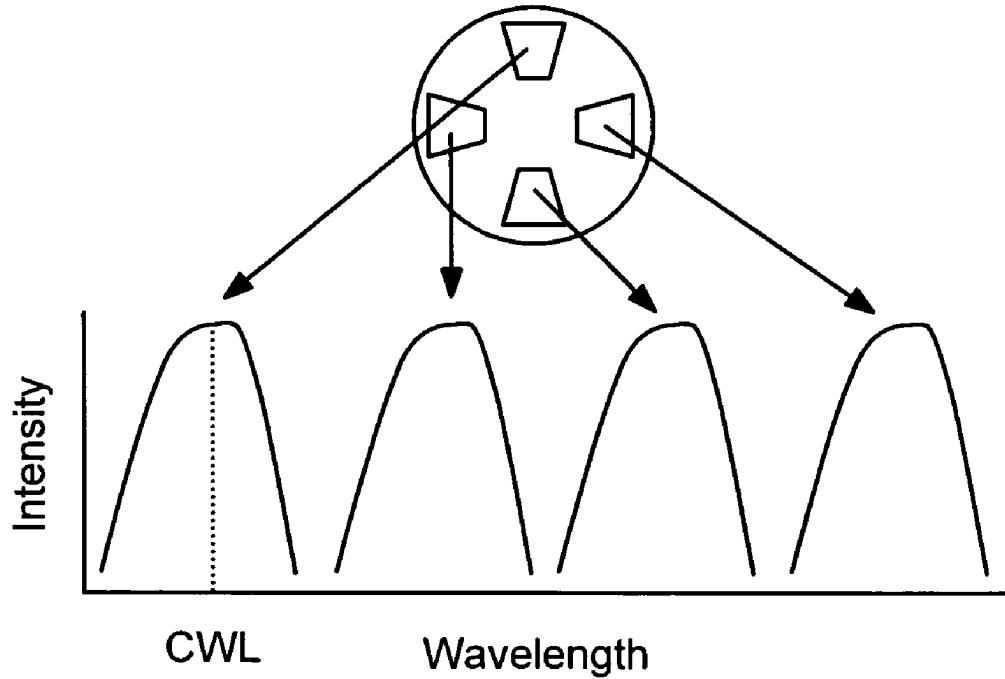


FIG. 2C

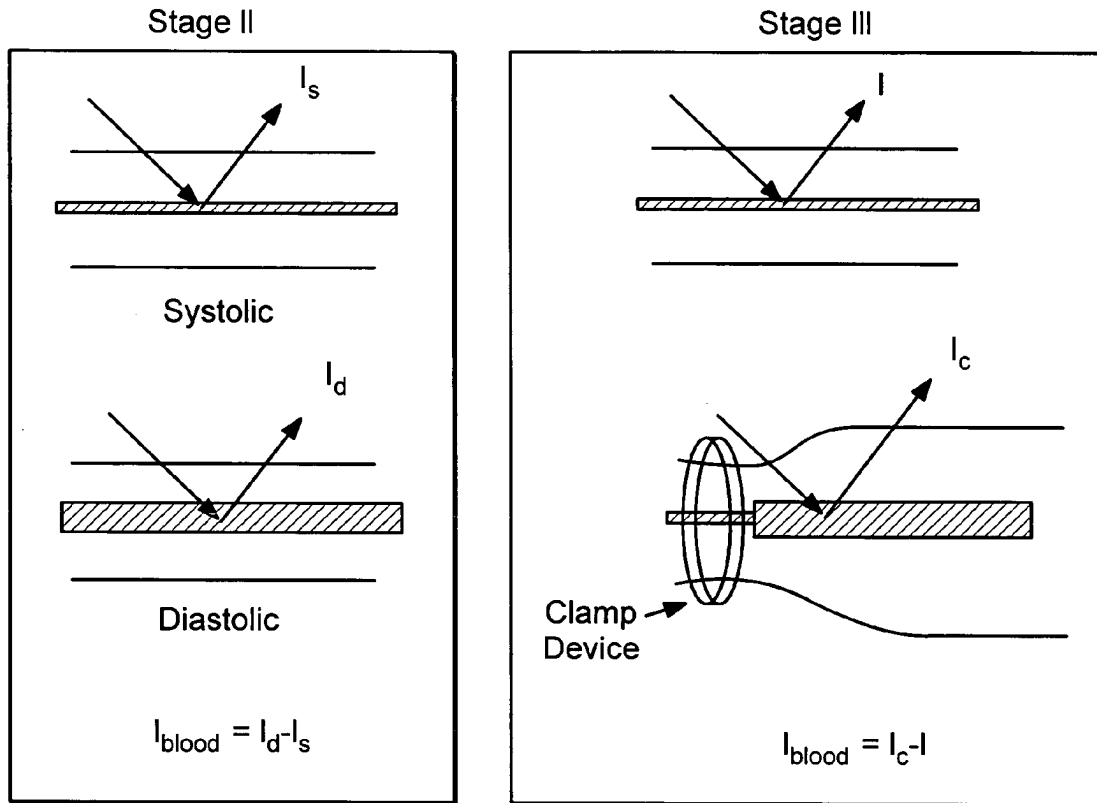


FIG. 3

Explore Litigation Insights

Docket Alarm provides insights to develop a more informed litigation strategy and the peace of mind of knowing you're on top of things.

Real-Time Litigation Alerts



Keep your litigation team up-to-date with **real-time alerts** and advanced team management tools built for the enterprise, all while greatly reducing PACER spend.

Our comprehensive service means we can handle Federal, State, and Administrative courts across the country.

Advanced Docket Research



With over 230 million records, Docket Alarm's cloud-native docket research platform finds what other services can't. Coverage includes Federal, State, plus PTAB, TTAB, ITC and NLRB decisions, all in one place.

Identify arguments that have been successful in the past with full text, pinpoint searching. Link to case law cited within any court document via Fastcase.

Analytics At Your Fingertips



Learn what happened the last time a particular judge, opposing counsel or company faced cases similar to yours.

Advanced out-of-the-box PTAB and TTAB analytics are always at your fingertips.

API

Docket Alarm offers a powerful API (application programming interface) to developers that want to integrate case filings into their apps.

LAW FIRMS

Build custom dashboards for your attorneys and clients with live data direct from the court.

Automate many repetitive legal tasks like conflict checks, document management, and marketing.

FINANCIAL INSTITUTIONS

Litigation and bankruptcy checks for companies and debtors.

E-DISCOVERY AND LEGAL VENDORS

Sync your system to PACER to automate legal marketing.