

RS-485

RS-485, also known as **TIA-485(-A)** or **EIA-485**, is a standard, originally introduced in 1983, defining the electrical characteristics of drivers and receivers for use in serial communications systems. Electrical signaling is balanced, and multipoint systems are supported. The standard is jointly published by the Telecommunications Industry Association and Electronic Industries Alliance (TIA/EIA). Digital communications networks implementing the standard can be used effectively over long distances and in electrically noisy environments. Multiple receivers may be connected to such a network in a linear, multidrop bus. These characteristics make RS-485 useful in industrial control systems and similar applications.

Overview

RS-485 supports inexpensive local networks and multidrop communications links, using the same differential signaling over twisted pair as RS-422. It is generally accepted that RS-485 can be used with data rates up to 10 Mbit/s^[a] or, at lower speeds, distances up to 1,200 m (4,000 ft).^[2] As a rule of thumb, the speed in bit/s multiplied by the length in metres should not exceed 10⁸. Thus a 50-meter cable should not signal faster than 2 Mbit/s.^[3]

In contrast to RS-422, which has a driver circuit which cannot be switched off, RS-485 drivers use three-state logic allowing individual transmitters to be deactivated. This allows RS-485 to implement linear bus topologies using only two wires. The equipment located along a set of RS-485 wires are interchangeably called nodes, stations or devices.^[4] The recommended arrangement of the wires is as a connected series of point-to-point (multidropped) nodes, i.e. a line or bus, not a star, ring, or multiply connected network. Star and ring topologies are not recommended because of signal reflections or excessively low or high termination impedance. If a star configuration is unavoidable, special RS-485 repeaters are available which bidirectionally listen for data on each span and then retransmit the data onto all other spans.

Ideally, the two ends of the cable will have a termination resistor connected across the two wires. Without termination resistors, signal reflections off the unterminated end of the cable can cause data corruption. Termination resistors also reduce electrical noise sensitivity due to the lower impedance. The value of each termination resistor should be equal to the cable characteristic impedance (typically, 120 ohms for twisted pairs). The termination also includes pull up and pull down resistors to establish fail-safe bias for each data wire for the case when the lines are not being driven by any

TIA-485-A (Revision of EIA-485)	
Standard	ANSI/TIA/EIA-485-A-1998 Approved: March 3, 1998 Reaffirmed: December 7, 2012
Physical media	Balanced interconnecting cable
Network topology	Point-to-point, multidropped, multi-point
Maximum devices	At least 32 unit loads
Maximum distance	Not specified
Mode of operation	Different receiver levels: binary 1 (OFF) (V _{oa} –V _{ob} < –200 mV) binary 0 (ON) (V _{oa} –V _{ob} > +200 mV)
Available signals	A, B, C
Connector types	Not specified

device. This way, the lines will be biased to known voltages and nodes will not interpret the noise from undriven lines as actual data; without biasing resistors, the data lines float in such a way that electrical noise sensitivity is greatest when all device stations are silent or unpowered.^[5]

Standard

The EIA once labeled all its standards with the prefix "RS" (Recommended Standard), but the EIA-TIA officially replaced "RS" with "EIA/TIA" to help identify the origin of its standards. The EIA has officially disbanded and the standard is now maintained by the TIA as TIA-485, but engineers and applications guides continue to use the RS-485 designation.^[6] The initial edition of EIA RS-485 was dated April 1983.^[7]

RS-485 only specifies the electrical characteristics of the generator and the receiver: the physical layer. It does not specify or recommend any communications protocol; Other standards define the protocols for communication over an RS-485 link. The foreword to the standard references *The Telecommunications Systems Bulletin TSB-89* which contains application guidelines, including data signaling rate vs. cable length, stub length, and configurations.

Section 4 defines the electrical characteristics of the generator (transmitter or driver), receiver, transceiver, and system. These characteristics include: definition of a unit load, voltage ranges, open-circuit voltages, thresholds, and transient tolerance. It also defines three generator interface points (signal lines); A, B and C. The data is transmitted on A and B. C is a ground reference. This section also defines the logic states 1 (off) and 0 (on), by the polarity between A and B terminals. If A is negative with respect to B, the state is binary 1. The reversed polarity (A positive with respect to B) is binary 0. The standard does not assign any logic function to the two states.

Full duplex operation

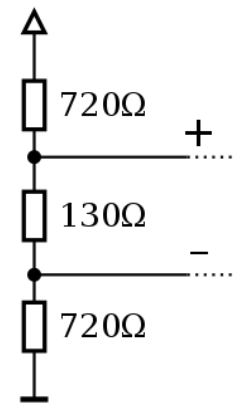
RS-485, like RS-422, can be made full-duplex by using four wires.^[8] Since RS-485 is a multi-point specification, however, this is not necessary or desirable in many cases. RS-485 and RS-422 can interoperate with certain restrictions.^[9]

Converters, repeaters and star topology

Converters between RS-485 and RS-232 are available to allow a personal computer to communicate with remote devices. By using repeaters very large RS-485 networks can be formed. TSB-89A, Application Guidelines for TIA/EIA-485-A does not recommend using star topology.^[10]

Applications

RS-485 signals are used in a wide range of computer and automation systems. In a computer system, SCSI-2 and SCSI-3 may use this specification to implement the physical layer for data transmission between a controller and a disk drive. RS-485 is used for low-speed data communications in



Typical bias network together with termination. Biasing and termination values are not specified in the RS-485 standard.

commercial aircraft cabins' vehicle bus. It requires minimal wiring and can share the wiring among several seats, reducing weight.

These are used in programmable logic controllers and on factory floors. RS-485 is used as the physical layer underlying many standard and proprietary automation protocols used to implement industrial control systems, including the most common versions of Modbus and Profibus. **DH 485** is a proprietary communications protocol used by Allen-Bradley in their line of industrial control units. Utilizing a series of dedicated interface devices, it allows PCs and industrial controllers to communicate.^[11] Since it is differential, it resists electromagnetic interference from motors and welding equipment.

In theatre and performance venues, RS-485 networks are used to control lighting and other systems using the DMX512 protocol. RS-485 serves as a physical layer for the AES3 digital audio interconnect.

RS-485 is also used in building automation as the simple bus wiring and long cable length is ideal for joining remote devices. It may be used to control video surveillance systems or to interconnect security control panels and devices such as access control card readers.

It is also used in Digital Command Control (DCC) for model railways. The external interface to the DCC command station is often RS-485 used by hand-held controllers^[12] or for controlling the layout in a networked PC environment. 8P8C modular connectors are used in this case.^[13]

Protocols

RS-485 does not define a communication protocol; merely an electrical interface. Although many applications use RS-485 signal levels, the speed, format, and protocol of the data transmission are not specified by RS-485. Interoperability of even similar devices from different manufacturers is not assured by compliance with the signal levels alone.

Signals

RS-485 signal states

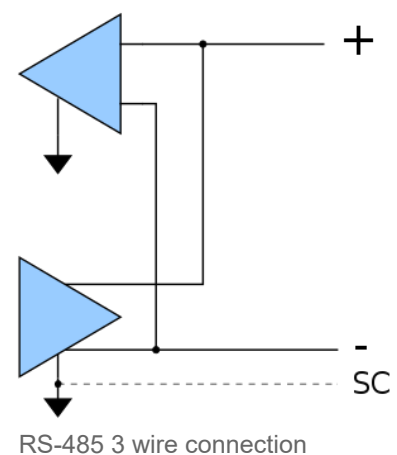
Signal	Mark (logic 1)	Space (logic 0)
A	Low	High
B	High	Low

The RS-485 differential line consists of two signals:

- **A**, which is low for logic 1 and high for logic 0 and,
- **B**, which is high for logic 1 and low for logic 0.

Because a mark (logic 1) condition is traditionally represented (e.g. in RS-232) with a negative voltage and space (logic 0) represented with a positive one, A may be considered the *non-inverting* signal and B as inverting. The RS-485 standard states (paraphrased):^[14]

- For an off, mark or logic 1 state, the driver's A terminal is negative relative to the B terminal.
- For an on, space or logic 0 state, the driver's A terminal is positive relative to the B terminal.^[b]



The truth tables of most popular devices, starting with the SN75176, show the output signals inverted. This is in accordance with the A/B naming used by most differential transceiver manufacturers, including:

- Intersil, as seen in their data sheet for the ISL4489 transceiver^[15]
- Maxim, as seen in their data sheet for the MAX483 transceiver^[16] and for the new generation 3.3v micro controller the MAX3485
- Linear Technology, as seen in their datasheet for the LTC2850, LTC2851, LTC2852^[17]
- Analog Devices, as seen in their datasheet for the ADM3483, ADM3485, ADM3488, ADM3490, ADM3491^[18]
- FTDI, as seen in their datasheet for the USB-RS485-WE-1800-BT^[19]

These manufacturers all agree on the meaning of the standard, and their practice is in widespread use. The issue also exists in programmable logic controller applications.^[c] Care must be taken when using A/B naming. Alternate nomenclature is often used to avoid confusion surrounding the A/B naming:

- TX+/RX+ or D+ as alternative for B (high for mark i.e. idle)
- TX-/RX- or D- as alternative for A (low for mark i.e. idle)

RS-485 standard conformant drivers provide a differential output of a minimum 1.5 V across a 54-Ω load, whereas standard conformant receivers detect a differential input down to 200 mV. The two values provide a sufficient margin for a reliable data transmission even under severe signal degradation across the cable and connectors. This robustness is the main reason why RS-485 is well suited for long-distance networking in noisy environment.^[28]

In addition to the **A** and **B** connections, an optional, third connection may be present (the TIA standard requires the presence of a common return path between all circuit grounds along the balanced line for proper operation)^[29] called **SC**, **G** or **reference**, the common signal reference ground used by the receiver to measure the A and B voltages. This connection may be used to limit the common-mode signal that can be impressed on the receiver inputs. The allowable common-mode voltage is in the range -7 V to +12 V, i.e. ±7 V on top of the 0–5 V signal range. Failure to stay within this range will result in, at best, signal corruption, and, at worst, damage to connected devices.

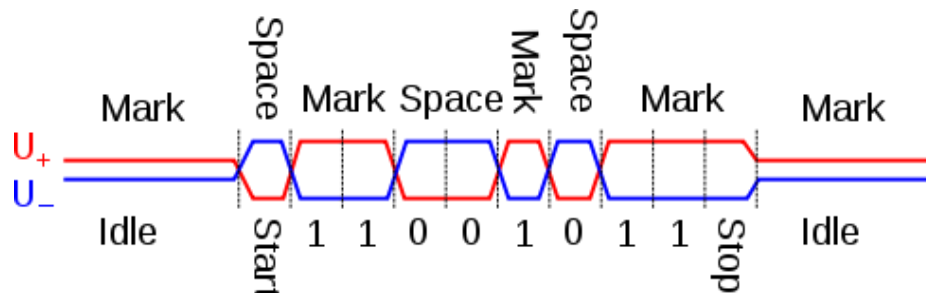
Care must be taken that an SC connection, especially over long cable runs, does not result in an attempt to connect disparate grounds together – it is wise to add some current limiting to the SC connection. Grounds between buildings may vary by a small voltage, but with very low impedance and hence the possibility of catastrophic currents – enough to melt signal cables, PCB traces, and transceiver devices.

RS-485 does not specify any connector or pinout. Circuits may be terminated on screw terminals, D-subminiature connectors, or other types of connectors.

The standard does not discuss cable shielding but makes some recommendations on preferred methods of interconnecting the signal reference common and equipment case grounds.

Waveform example

The diagram below shows potentials of the A (blue) and B (red) pins of an RS-485 line during transmission of one byte (0xD3, least significant bit first) of data using an asynchronous start-stop method.



A signal shown in blue, B in red

See also

- List of network buses
- UART

Notes

- Under some conditions it can be used up to data transmission speeds of 64 Mbit/s.^[1]
- There is an apparent typo in this statement as both states in the standard are designated *binary 1*. It is clear in the figure that follows that the off state corresponds to binary 1 and on corresponds to binary 0.
- With Modbus, BACnet and Profibus, A/B labeling refers **A** as the *negative green* wire and **B** as the *positive red* wire, in the definition of the D-sub connector and M12 circular connector, as can be seen in Profibus guides.^{[20][21]} As long as standard excludes logic function of the generator or receiver,^[22] it would make sense **A** (green, negative) is higher than **B** (red, positive). However this contradicts the facts that an idle **mark** state is a logical **one** and the termination polarization puts **B** at a higher voltage in Profibus guidelines.^[23] That so-called 'Pesky Polarity' problem^[24] raised confusion which made authors think **A** is inverting within the TIA-485-A standard itself^[25] and advise to swap what is **A** and **B** in drivers and line labeling as can be read in a section of an application bulletin: "Design Consideration #3: Sometimes Bus Node **A** Isn't Really Bus Node **A**".^[26] It is now a common design decision to make this inversion which involves the following polarity chain: UART/MCU idle → TTL/CMOS = +5 V → Line **B** voltage > Line **A** voltage, implying **A**, the green wire, is indeed connected to the driver *inverting* signal, as seen in a whitepaper.^[27]

References

- RS-485 Reference Guide* (<https://web.archive.org/web/20180517101401/http://www.ti.com/lit/sg/slyt484a/slyt484a.pdf>) (PDF), archived from the original (<http://www.ti.com/lit/sg/slyt484a/slyt484a.pdf>) (PDF) on 2018-05-17
- "How Far and How Fast Can You Go with RS-485? - Application Note – Maxim" (<https://www.maximintegrated.com/en/app-notes/index.mvp/id/3884>). *www.maximintegrated.com*.

Explore Litigation Insights

Docket Alarm provides insights to develop a more informed litigation strategy and the peace of mind of knowing you're on top of things.

Real-Time Litigation Alerts



Keep your litigation team up-to-date with **real-time alerts** and advanced team management tools built for the enterprise, all while greatly reducing PACER spend.

Our comprehensive service means we can handle Federal, State, and Administrative courts across the country.

Advanced Docket Research



With over 230 million records, Docket Alarm's cloud-native docket research platform finds what other services can't. Coverage includes Federal, State, plus PTAB, TTAB, ITC and NLRB decisions, all in one place.

Identify arguments that have been successful in the past with full text, pinpoint searching. Link to case law cited within any court document via Fastcase.

Analytics At Your Fingertips



Learn what happened the last time a particular judge, opposing counsel or company faced cases similar to yours.

Advanced out-of-the-box PTAB and TTAB analytics are always at your fingertips.

API

Docket Alarm offers a powerful API (application programming interface) to developers that want to integrate case filings into their apps.

LAW FIRMS

Build custom dashboards for your attorneys and clients with live data direct from the court.

Automate many repetitive legal tasks like conflict checks, document management, and marketing.

FINANCIAL INSTITUTIONS

Litigation and bankruptcy checks for companies and debtors.

E-DISCOVERY AND LEGAL VENDORS

Sync your system to PACER to automate legal marketing.