

Carmel

- Carmel does not disclose any HTTP request that contains any element other than the starting slice of the stream
- Carmel discloses embodiments that are admitted to the public
- Carmel discloses no buffer management
- Carmel specifically references HTTP 1.1, which includes “push” streaming disclosed in Carmel

FIG. 6A

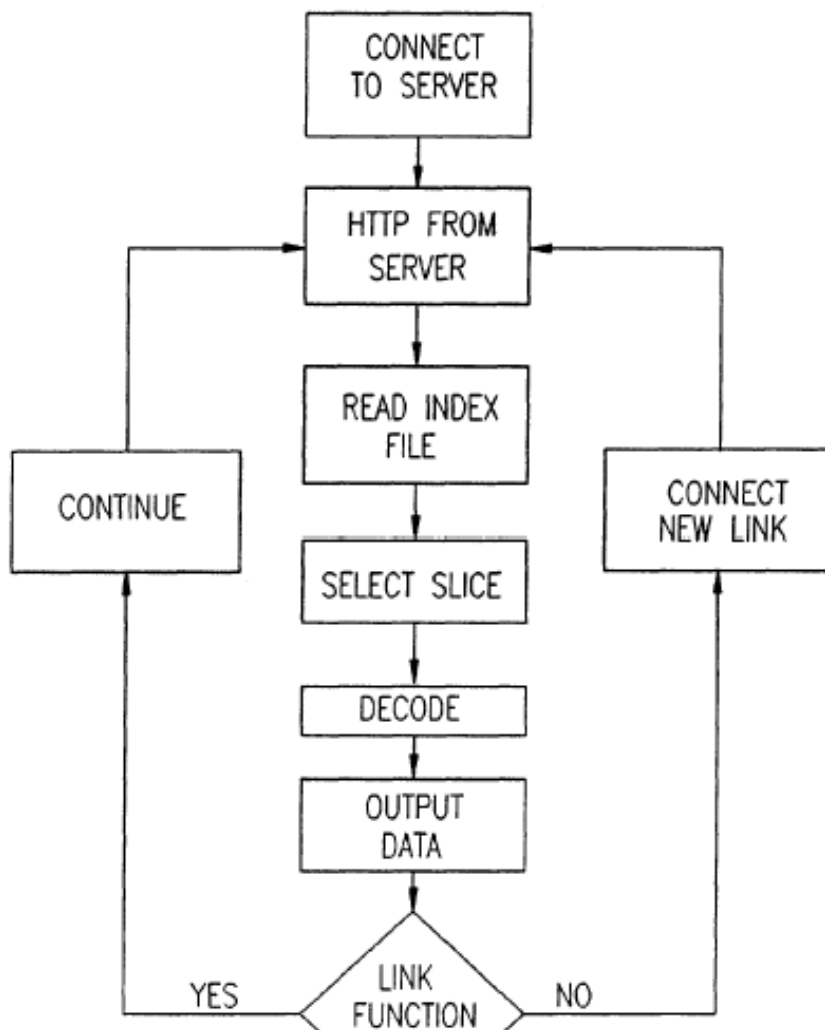


FIG. 30 in de
3A) tra
preferre
tion of
downlo
30 carry
detection
received
art. A sa
software
35 Each
multiple
describ
30 open
40 etc., are
case of
may sim
(FIG. 3
client, s
45 of data
user inp
begins t
46, etc.
reconstr
50 synchron
played b
with on
delay.
55 Client
over eac
non-ope
is close

FIG. 6B

Carmel

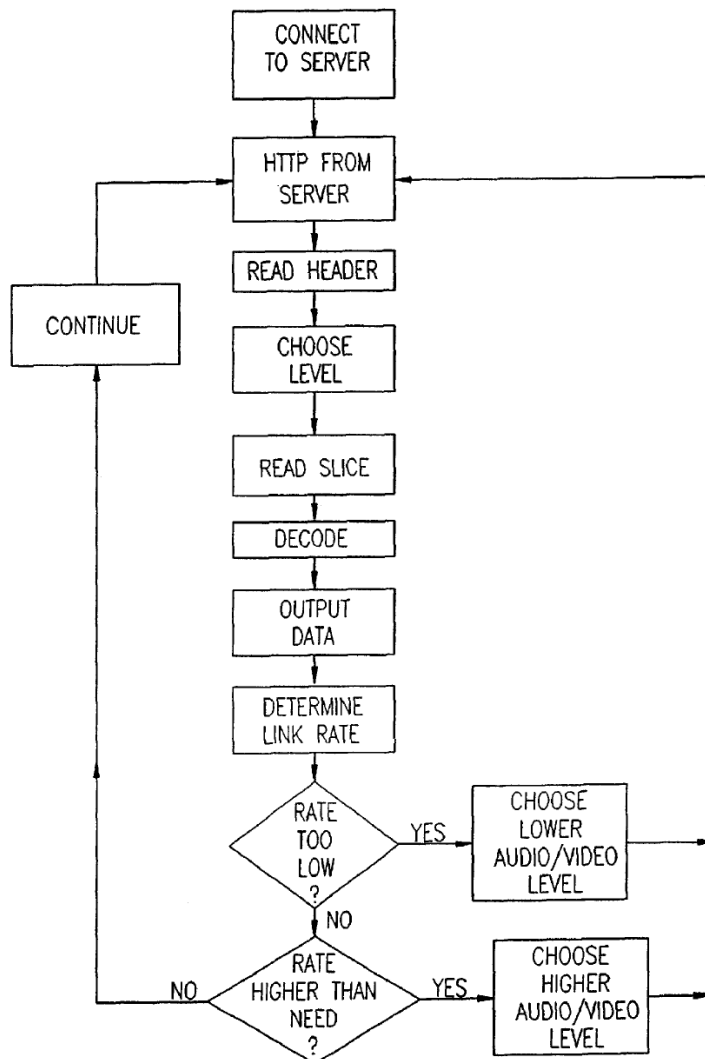
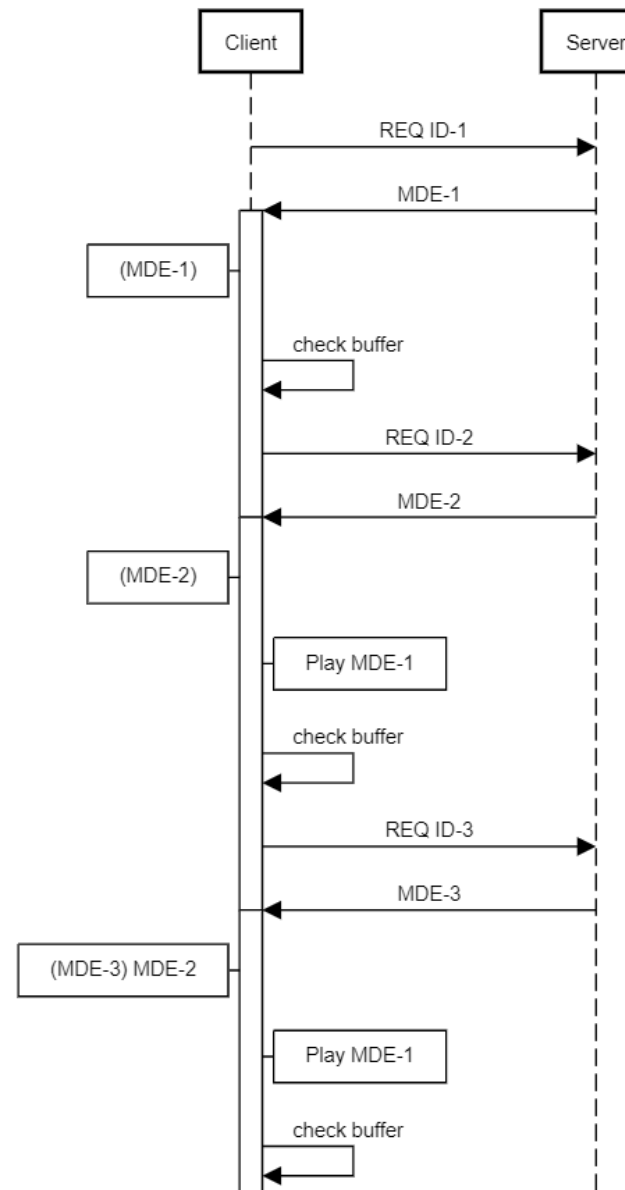


FIG. 6B is a flowchart illustrating a process for adjusting audio/video levels based on link rate. The process starts with connecting to a server (30) in downloading a slice (41) from another preferred server (36).

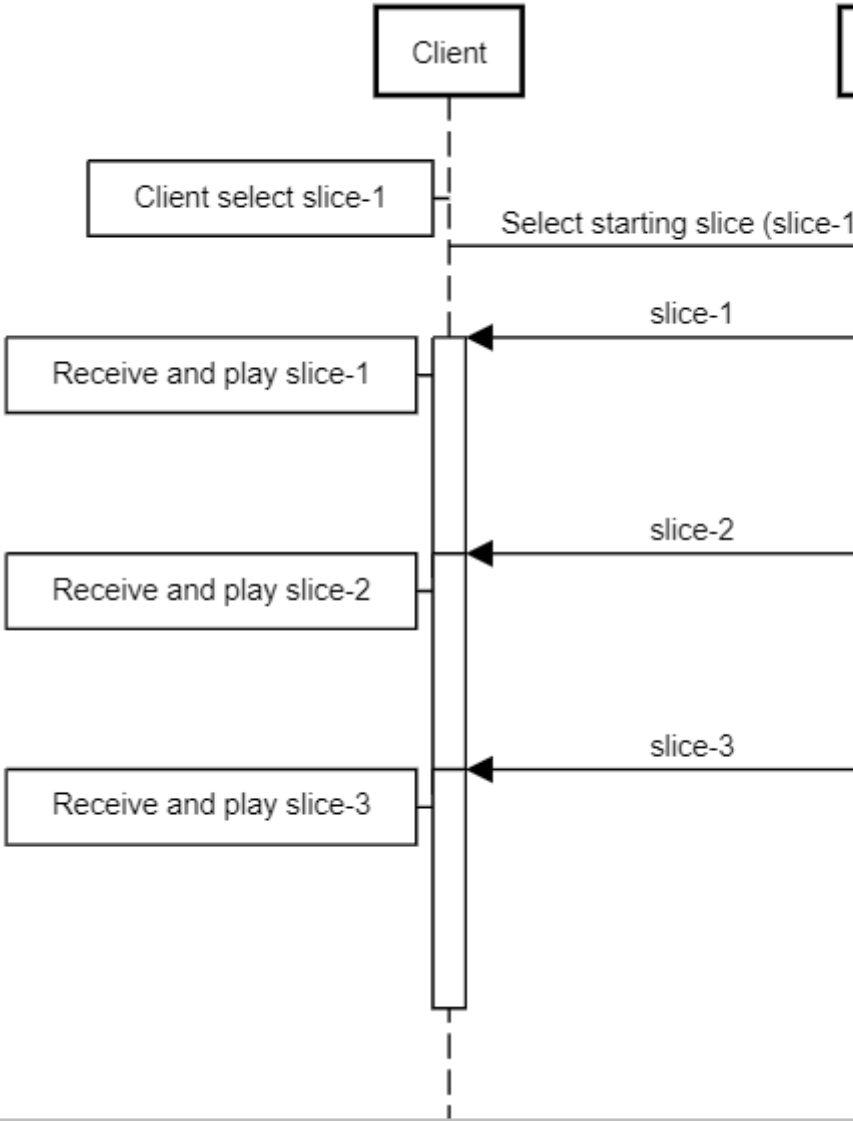
in the method, the client periodically checks the link bandwidth and quality levels in the server 36 beginning with the lowest quality level. The slice is then downloaded by the client.

Periodically, the client checks the data transfer over the link. If the link rate is low, such as when the link rate is low, the client needs to be played at a lower level. If the link rate is high, the client needs to be played at a higher level. If one is substantially higher than the previous successive slice, the client needs to be played at a higher quality level to avoid watermarks, and are used in the method to be selected.

'824/'636 Patent (individual slice re



Carmel (push from starting slice)



Explore Litigation Insights

Docket Alarm provides insights to develop a more informed litigation strategy and the peace of mind of knowing you're on top of things.

Real-Time Litigation Alerts



Keep your litigation team up-to-date with **real-time alerts** and advanced team management tools built for the enterprise, all while greatly reducing PACER spend.

Our comprehensive service means we can handle Federal, State, and Administrative courts across the country.

Advanced Docket Research



With over 230 million records, Docket Alarm's cloud-native docket research platform finds what other services can't. Coverage includes Federal, State, plus PTAB, TTAB, ITC and NLRB decisions, all in one place.

Identify arguments that have been successful in the past with full text, pinpoint searching. Link to case law cited within any court document via Fastcase.

Analytics At Your Fingertips



Learn what happened the last time a particular judge, opposing counsel or company faced cases similar to yours.

Advanced out-of-the-box PTAB and TTAB analytics are always at your fingertips.

API

Docket Alarm offers a powerful API (application programming interface) to developers that want to integrate case filings into their apps.

LAW FIRMS

Build custom dashboards for your attorneys and clients with live data direct from the court.

Automate many repetitive legal tasks like conflict checks, document management, and marketing.

FINANCIAL INSTITUTIONS

Litigation and bankruptcy checks for companies and debtors.

E-DISCOVERY AND LEGAL VENDORS

Sync your system to PACER to automate legal marketing.