



US007649837B1

(12) **United States Patent**  
**Puuskari**

(10) **Patent No.:** **US 7,649,837 B1**  
(45) **Date of Patent:** **Jan. 19, 2010**

(54) **CONTROL OF GATEWAY SUPPORT NODE SELECTION**

(75) Inventor: **Mikko Puuskari**, Helsinki (FI)

(73) Assignee: **Nokia Networks Oy**, Espoo (FI)

(\*) Notice: Subject to any disclaimer, the term of this patent is extended or adjusted under 35 U.S.C. 154(b) by 0 days.

(21) Appl. No.: **09/869,247**

(22) PCT Filed: **Dec. 28, 1999**

(86) PCT No.: **PCT/FI99/01083**

§ 371 (c)(1),  
(2), (4) Date: **Sep. 14, 2001**

(87) PCT Pub. No.: **WO00/41414**

PCT Pub. Date: **Jul. 13, 2000**

(30) **Foreign Application Priority Data**

Dec. 31, 1998 (FI) ..... 982855

(51) **Int. Cl.**  
**H04L 12/26** (2006.01)

(52) **U.S. Cl.** ..... **370/225; 370/252; 370/331; 370/401**

(58) **Field of Classification Search** ..... 370/328, 370/338, 401, 216-218, 229, 230, 235, 237, 370/252, 310, 349, 402, 225, 262  
See application file for complete search history.

(56) **References Cited**

**U.S. PATENT DOCUMENTS**

5,752,162 A 5/1998 Sawyer et al.

5,892,819 A *	4/1999	Stumer	379/211.02
6,070,192 A *	5/2000	Holt et al.	709/227
6,104,929 A *	8/2000	Josse et al.	455/445
6,233,458 B1 *	5/2001	Haumont et al.	455/445
6,535,507 B1 *	3/2003	Li et al.	370/356
6,608,832 B2 *	8/2003	Forslow	370/353
6,636,502 B1 *	10/2003	Lager et al.	370/352
6,738,909 B1 *	5/2004	Cheng et al.	726/3
6,829,242 B2 *	12/2004	Davison et al.	370/401
6,937,566 B1 *	8/2005	Forslow	370/231
2001/0055299 A1 *	12/2001	Kelly	370/352
2003/0026273 A1 *	2/2003	Davison et al.	370/409
2007/0091862 A1 *	4/2007	Ioannidis	370/338
2007/0195791 A1 *	8/2007	Bosch et al.	370/395.52
2007/0213058 A1 *	9/2007	Shaheen	455/436

**FOREIGN PATENT DOCUMENTS**

WO	WO 98/59468	12/1998
WO	WO 00/14981	3/2000

\* cited by examiner

*Primary Examiner*—Chi H. Pham

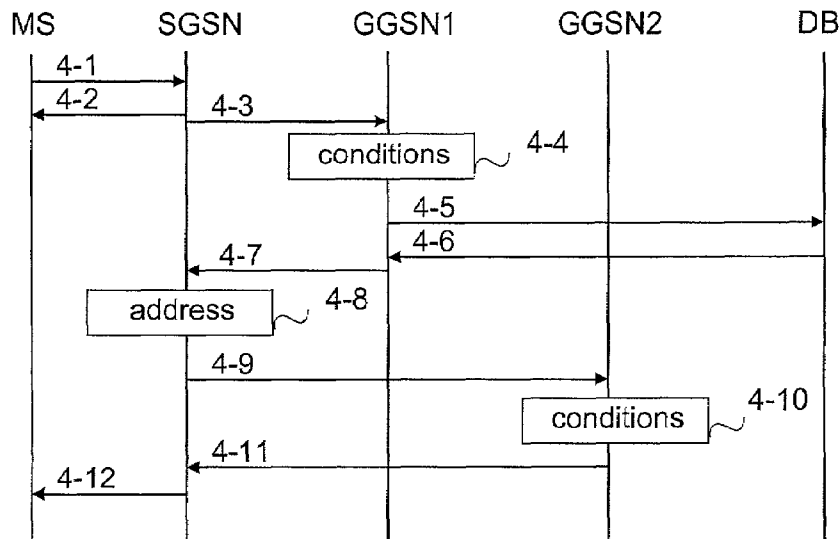
*Assistant Examiner*—Shick Hom

(74) *Attorney, Agent, or Firm*—Pillsbury Winthrop Shaw Pittman, LLP

(57) **ABSTRACT**

The invention relates to controlling selection of a gateway support node of a packet-switched network. The invention includes defining at least one condition for the gateway support node. When the condition is fulfilled, another gateway support node is more suitable for transmitting packets. When fulfillment of the condition is detected, a first message indicating the other gateway support node is transmitted to the serving support node.

**12 Claims, 4 Drawing Sheets**



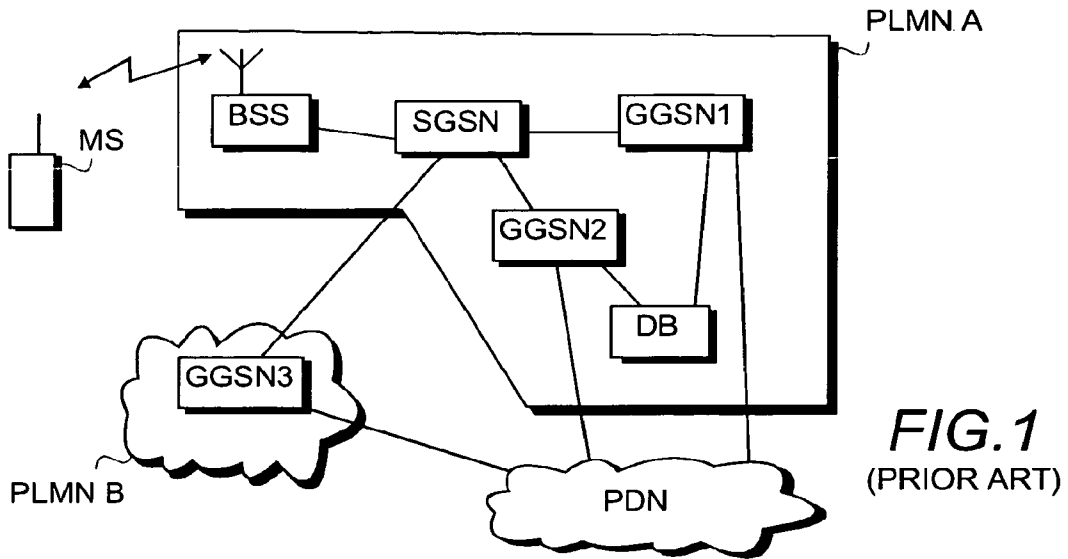


FIG. 1  
(PRIOR ART)

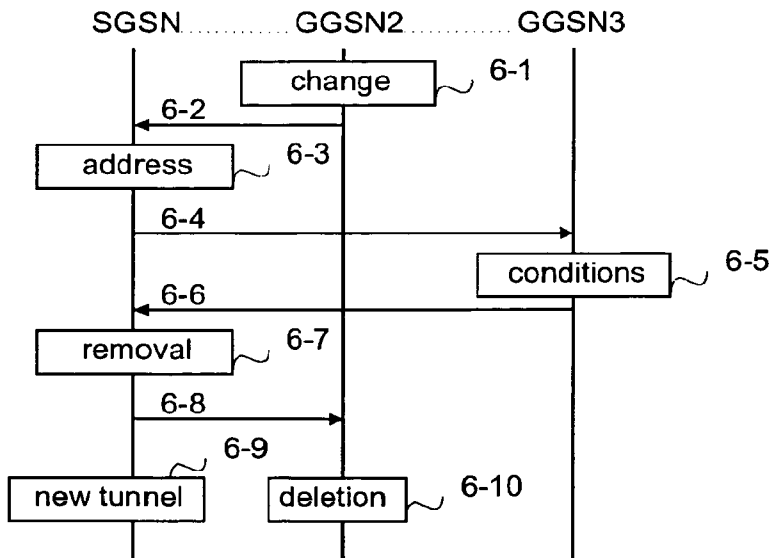


FIG. 6

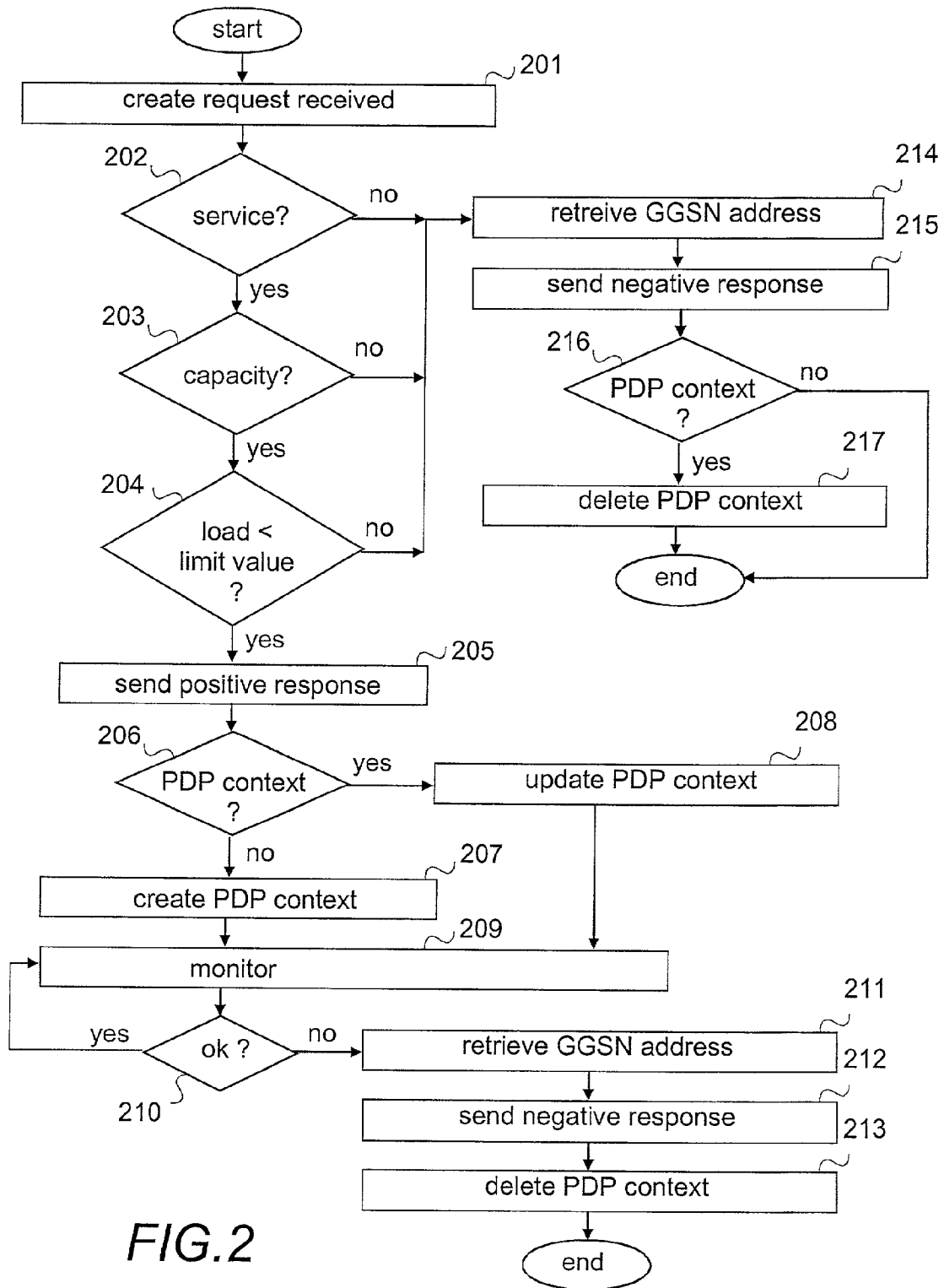
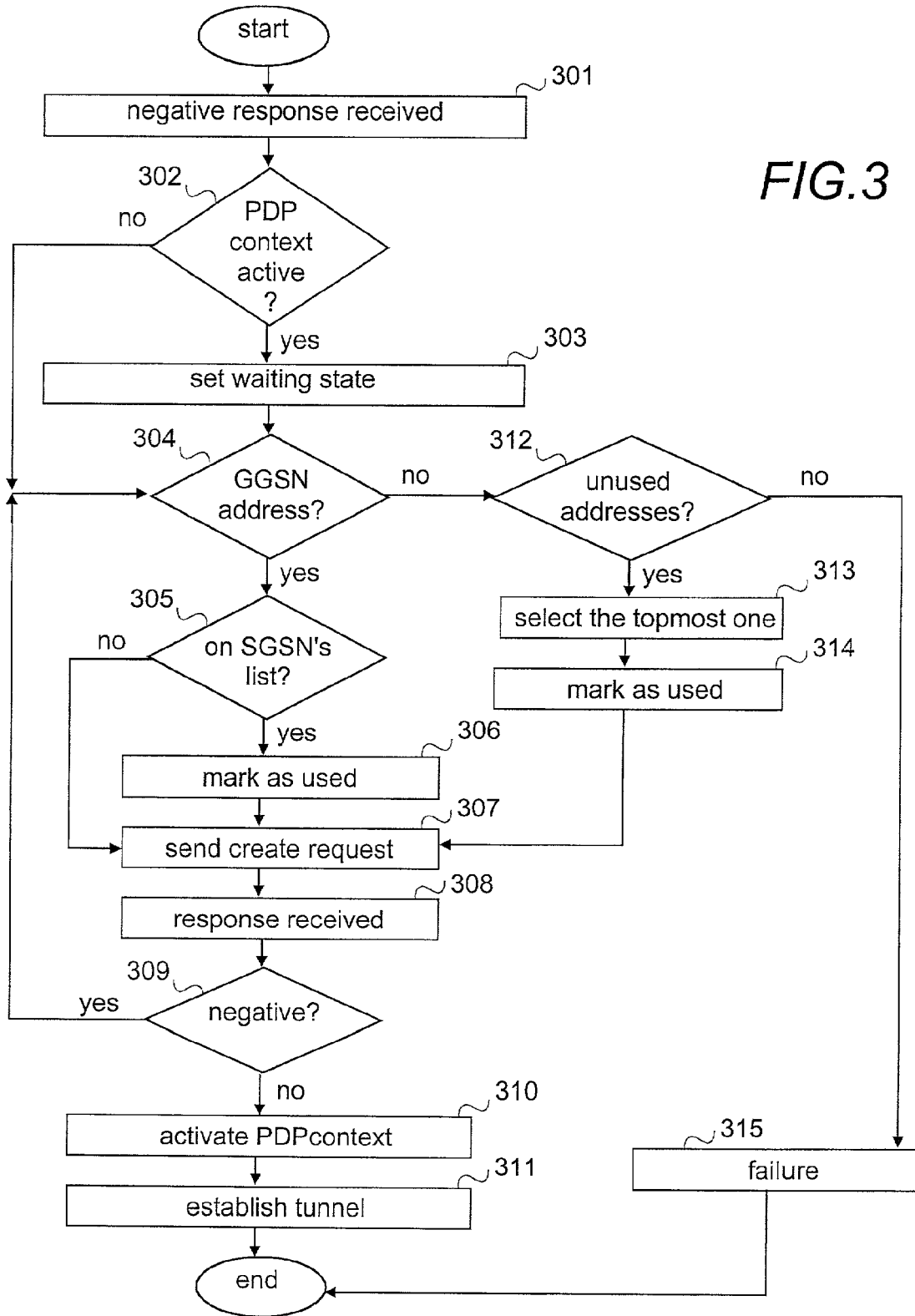


FIG. 2



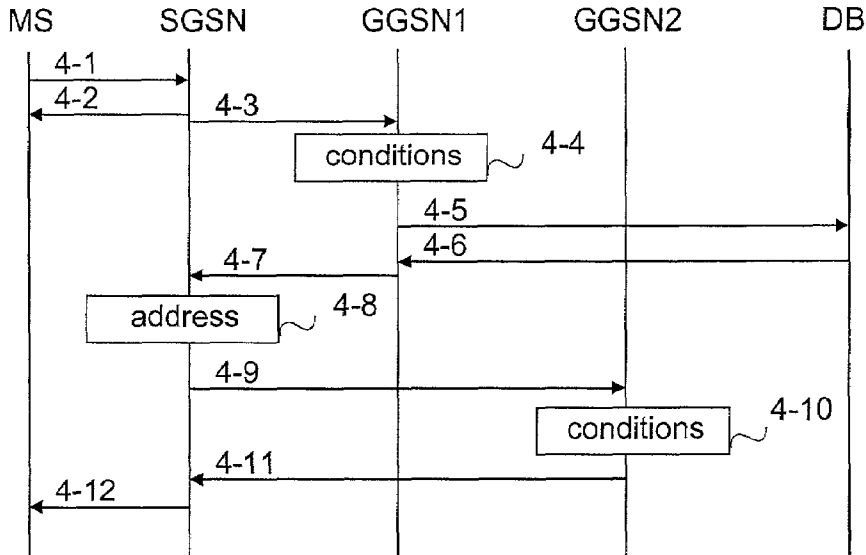


FIG. 4

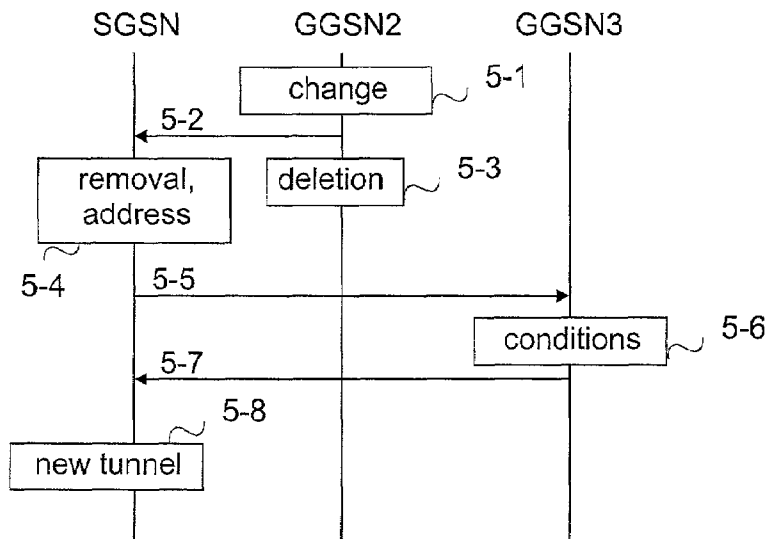


FIG. 5

# Explore Litigation Insights

Docket Alarm provides insights to develop a more informed litigation strategy and the peace of mind of knowing you're on top of things.

## Real-Time Litigation Alerts



Keep your litigation team up-to-date with **real-time alerts** and advanced team management tools built for the enterprise, all while greatly reducing PACER spend.

Our comprehensive service means we can handle Federal, State, and Administrative courts across the country.

## Advanced Docket Research



With over 230 million records, Docket Alarm's cloud-native docket research platform finds what other services can't. Coverage includes Federal, State, plus PTAB, TTAB, ITC and NLRB decisions, all in one place.

Identify arguments that have been successful in the past with full text, pinpoint searching. Link to case law cited within any court document via Fastcase.

## Analytics At Your Fingertips



Learn what happened the last time a particular judge, opposing counsel or company faced cases similar to yours.

Advanced out-of-the-box PTAB and TTAB analytics are always at your fingertips.

## API

Docket Alarm offers a powerful API (application programming interface) to developers that want to integrate case filings into their apps.

## LAW FIRMS

Build custom dashboards for your attorneys and clients with live data direct from the court.

Automate many repetitive legal tasks like conflict checks, document management, and marketing.

## FINANCIAL INSTITUTIONS

Litigation and bankruptcy checks for companies and debtors.

## E-DISCOVERY AND LEGAL VENDORS

Sync your system to PACER to automate legal marketing.