

(12) United States Patent
Mathis

(10) Patent No.: US 6,269,254 B1
(45) Date of Patent: Jul. 31, 2001

(54) RADIO COMMUNICATIONS DEVICE AND METHOD WITH API BETWEEN USER APPLICATION PROGRAM AND TELEPHONY PROGRAM AND METHOD

5,983,117 * 11/1999 Sandler et al. 455/557
 6,055,424 * 4/2000 Tornquist et al. 455/414
 6,055,441 * 4/2000 Wieand et al. 455/557

* cited by examiner

(75) Inventor: **James E. Mathis**, Barrington, IL (US)

Primary Examiner—William Trost
Assistant Examiner—Tilahun Gesesse

(73) Assignee: **Motorola, Inc.**, Schaumburg, IL (US)

(74) *Attorney, Agent, or Firm*—Hugh C. Dunlop; Romi N. Bose; Hisashi D. Watanabe

(*) Notice: Subject to any disclaimer, the term of this patent is extended or adjusted under 35 U.S.C. 154(b) by 0 days.

(57) ABSTRACT

A radio communications device has a memory having stored therein a user application program (16), a telephony program (18) and an application programming interface (API) 30 between these. Various aspects of the API are described. In one aspect, the API has a command for establishing a call and the telephony program accepts, as an argument of the command for establishing the call, an array identifying several terminal objects (54-58), thereby permitting establishment of a call for multiple terminal objects. In another aspect, groupings of events are described and an API command defines an event class from one of the groups together with an ID defining an event within the event class. In a further aspect, a program in the telephony program is called to create a call object (50). The call object is created regardless of whether radio service for the radio communications device has been established.

(21) Appl. No.: **09/161,817**

(22) Filed: **Sep. 28, 1998**

(51) **Int. Cl.**⁷ **H04B 1/38**

(52) **U.S. Cl.** **455/557; 455/553; 379/93.04**

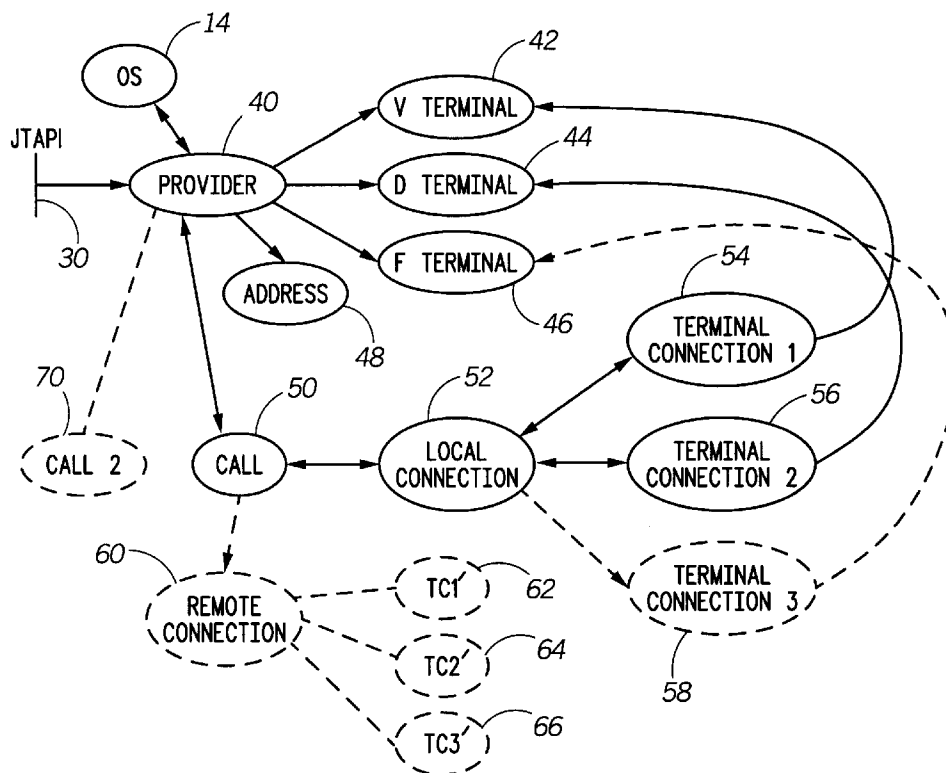
(58) **Field of Search** 455/556, 557, 455/553, 552, 84, 575; 379/93.04, 93.05, 93.06, 93.24

(56) References Cited

U.S. PATENT DOCUMENTS

5,625,678 * 4/1997 Blomfield-Brown 379/93
 5,652,866 * 7/1997 Aldred et al. 395/500
 5,781,612 * 7/1998 Choi et al. 455/553
 5,852,773 * 12/1998 Hu 455/557
 5,933,778 * 8/1999 Buhrmann et al. 455/461

12 Claims, 6 Drawing Sheets



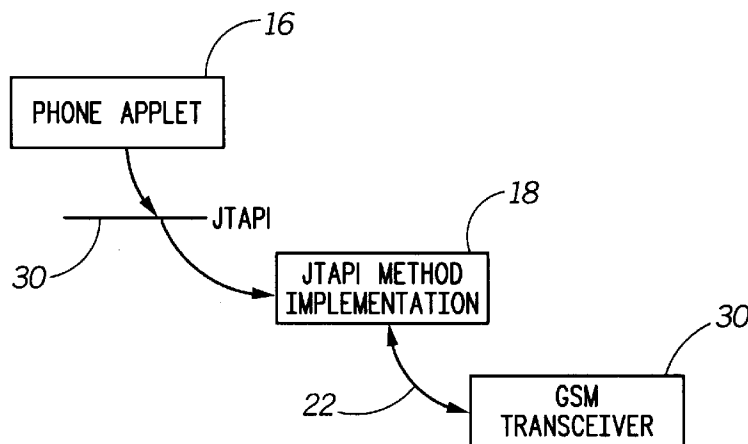
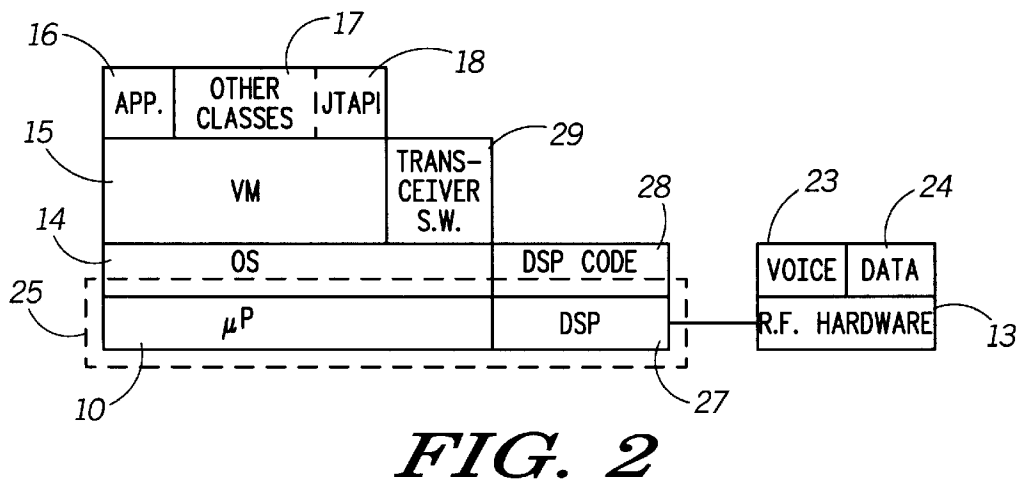
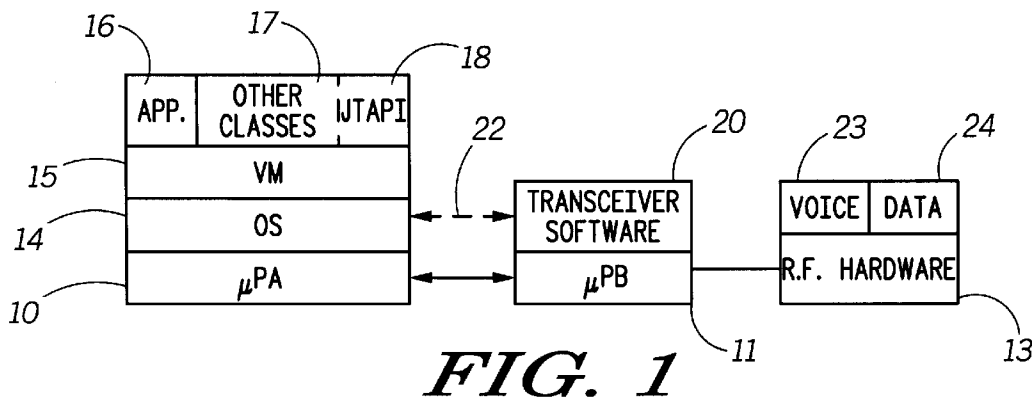


FIG. 3

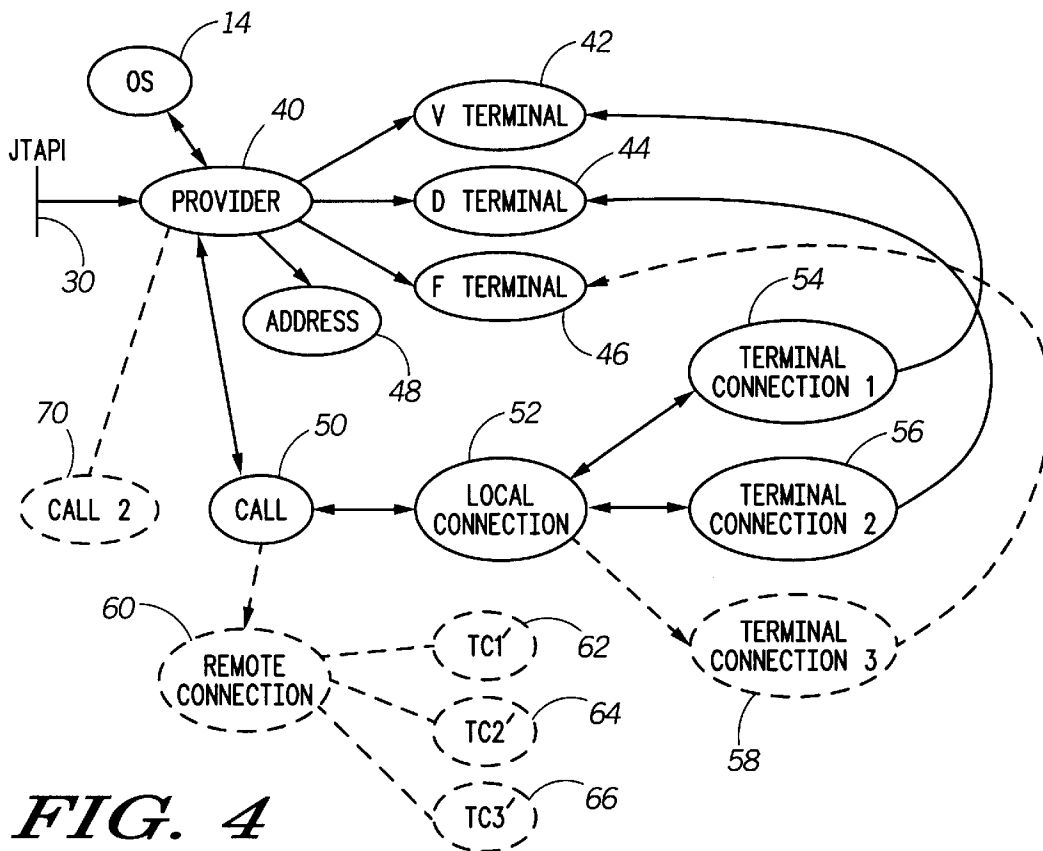


FIG. 4

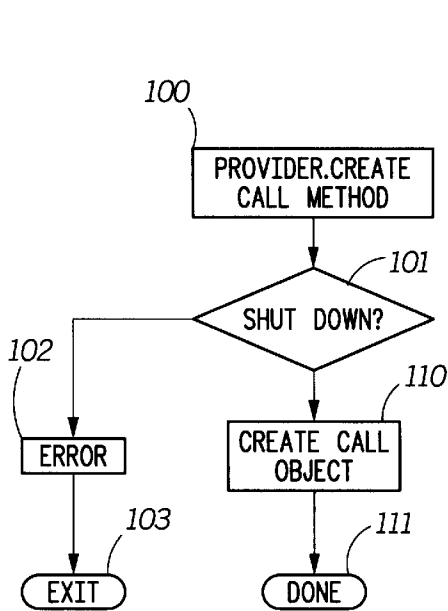


FIG. 5

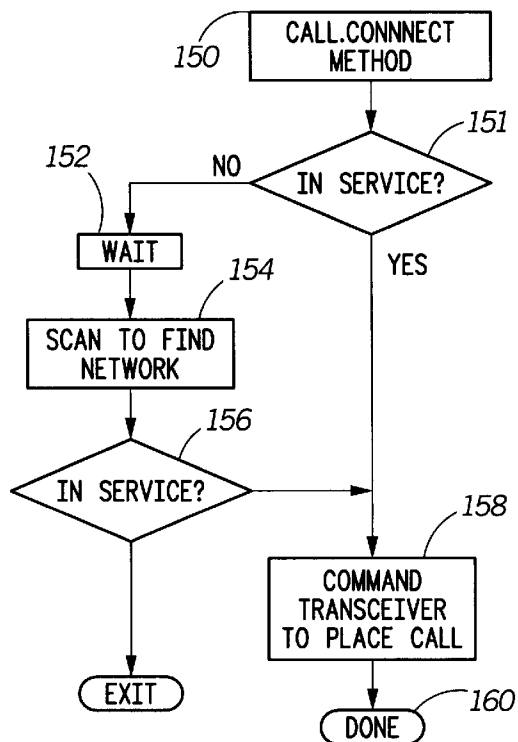


FIG. 6

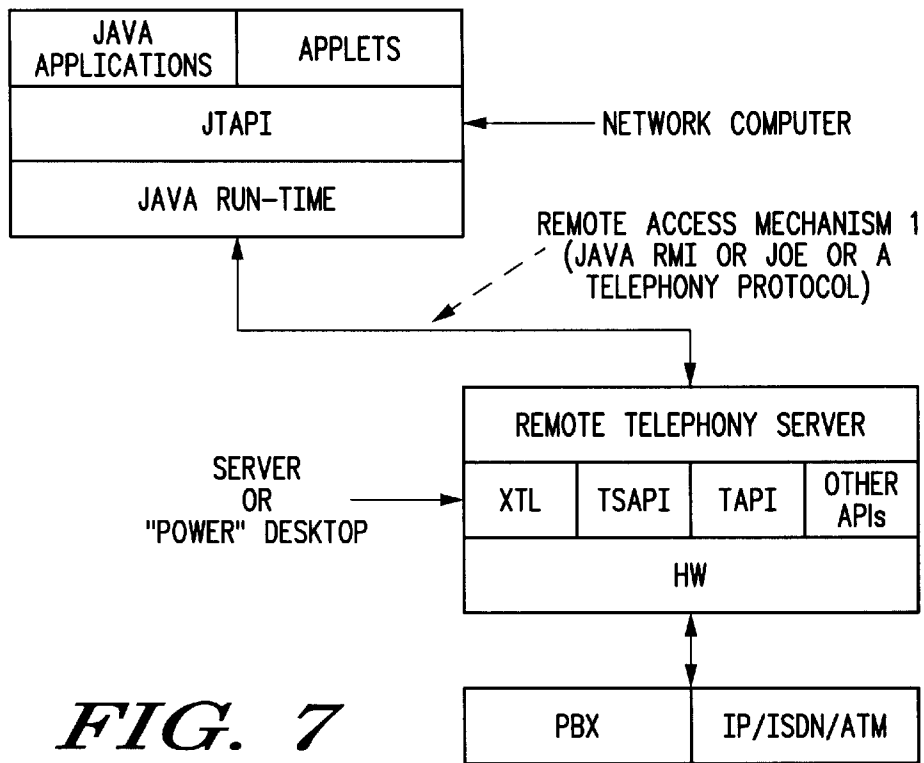


FIG. 7

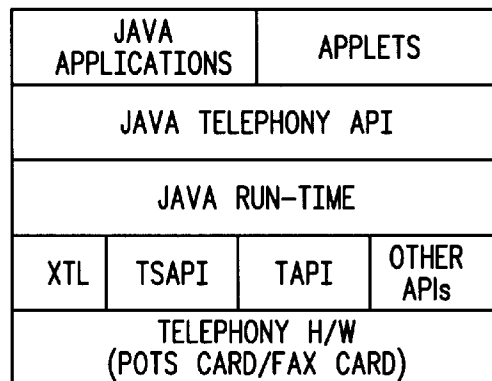


FIG. 8

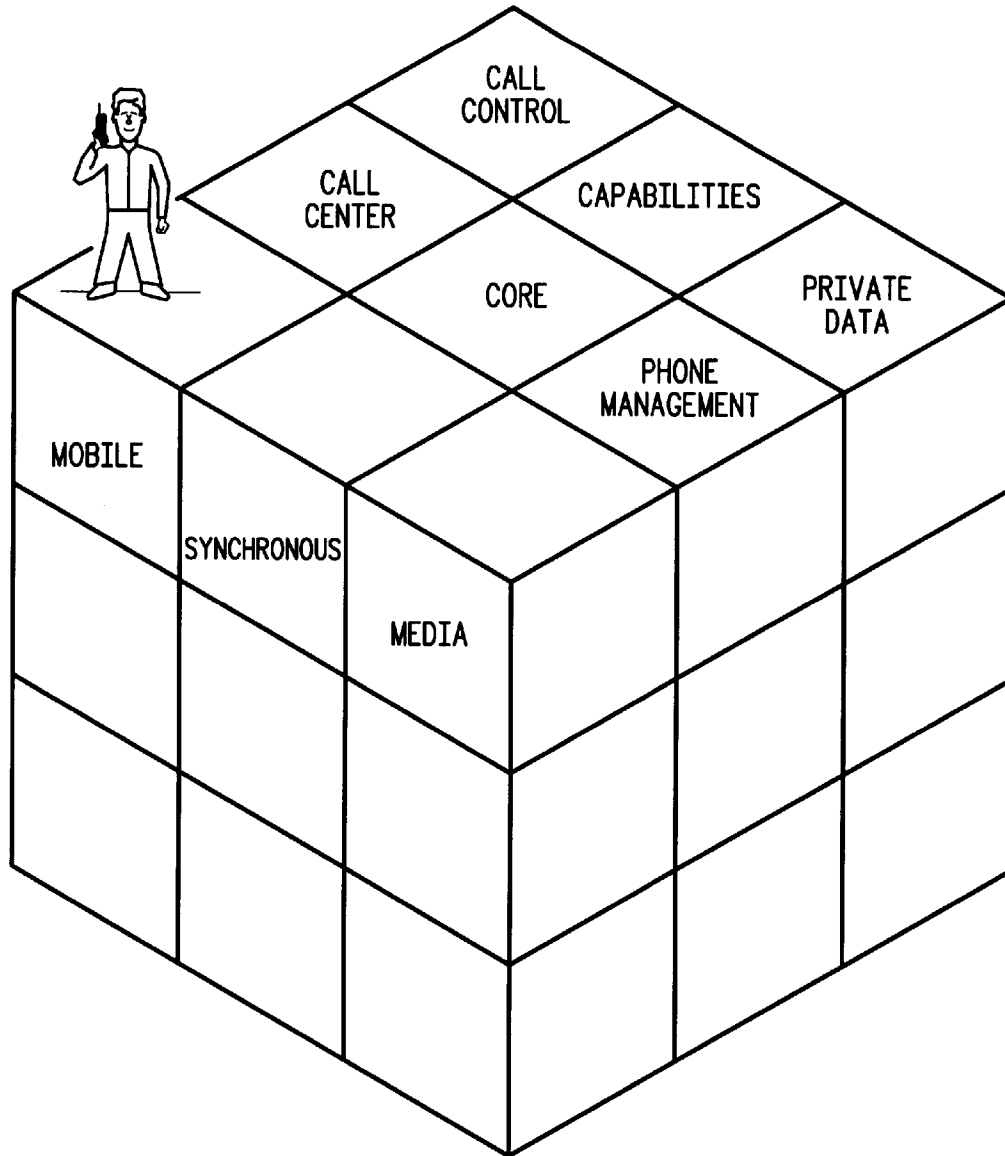


FIG. 9

Explore Litigation Insights

Docket Alarm provides insights to develop a more informed litigation strategy and the peace of mind of knowing you're on top of things.

Real-Time Litigation Alerts



Keep your litigation team up-to-date with **real-time alerts** and advanced team management tools built for the enterprise, all while greatly reducing PACER spend.

Our comprehensive service means we can handle Federal, State, and Administrative courts across the country.

Advanced Docket Research



With over 230 million records, Docket Alarm's cloud-native docket research platform finds what other services can't. Coverage includes Federal, State, plus PTAB, TTAB, ITC and NLRB decisions, all in one place.

Identify arguments that have been successful in the past with full text, pinpoint searching. Link to case law cited within any court document via Fastcase.

Analytics At Your Fingertips



Learn what happened the last time a particular judge, opposing counsel or company faced cases similar to yours.

Advanced out-of-the-box PTAB and TTAB analytics are always at your fingertips.

API

Docket Alarm offers a powerful API (application programming interface) to developers that want to integrate case filings into their apps.

LAW FIRMS

Build custom dashboards for your attorneys and clients with live data direct from the court.

Automate many repetitive legal tasks like conflict checks, document management, and marketing.

FINANCIAL INSTITUTIONS

Litigation and bankruptcy checks for companies and debtors.

E-DISCOVERY AND LEGAL VENDORS

Sync your system to PACER to automate legal marketing.